

~ *En Passant* ~

*Newsletter of the North Penn Chess Club, Lansdale, PA
Joe Mucerino's Trip to the World Chess Hall of Fame, Part 3*

E. Olin Mastin, Editor

North Penn Chess Club
500 West Main Street
Lansdale, PA 19446

www.northpennchessclub.org

This issue features more pictures and games from Joe Mucerino's trip to the World Chess Hall of Fame, St. Louis, MO.



On Friday, it was off to the Saint Louis Chess Club.
This sign is famous the world over.



Some pictures you see on the street.



More pictures on the street.



I did not enter through these doors because of the renovation, but instead another door at the other end of the building.



A view right inside the club.



A chair with the club's logo.



The 2022 U.S. Chess Championships had just ended when I arrived.



The club's library.



An unusual board. This was made for The American Cup. I actually played on of my tournament games that evening on this board. Note that we didn't use the nice wooden pieces the superstars play on, but the same plastic pieces that nearly every chess club in the country uses.



A more typical Saint Louis Chess Club board.



Pictures of the room where the Secret Action Quads were held. I don't know what the "secret" was, and the time control was G/10 +2 second increment, which is not what I consider to be "action" (to me, G/30 is an "action" tournament).

Joseph Mucerino (2058) - Daniel Ahmadi (1796)

Secret Action Quads, St. Louis, MO, Round 1, October 21, 2022

Ahmadi is from California. If I remember correctly, his blitz rating of 1993 was used, because it was higher than his standard and quick over-the-board ratings.

1.d4 Nf6 2.Nf3 g6 3.Bg5 Bg7 4.Nbd2 c6 5.e4 0-0 6.c3 d6 7.Bd3 Bg4 8.h3 [D]



8...Bxf3 9.Nxf3 Re8 10.0-0 Nbd7 11.e5 dxe5 12.dxe5 Nd5 13.Qe2 h6 [D] (Next col.) 14.Bd2? White misses 14.e6, which is the move I was trying to get in anyway! If 14...Nc5, 15.exf7+ is strong, but if 14...hxg5??, don't capture the Knight, instead 15.exf7+ Kh8 (15...Kxf7 16.Ng5+ is a forced mate) 16.Nxg5 e5 17.Bxg6 Qxg5 18.fxe8=Q+ Rxe8 19.Bxe8. (Text cont. next col.)

Position after 13...h6



(Cont. from prev. col.) **14...e6 15.Rfe1 Qc7 16.h4 Rad8 17.Rad1 Nc5 18.Bc2 Nd7 19.h5 g5 [D]**



20.Qe4 Ne7?? This gives White his chance. Black should have played 20...f5 or 20...Nf8 (Text cont. p.6)

(Cont. from p.5) 21.Qh7+ Kf8 [D]



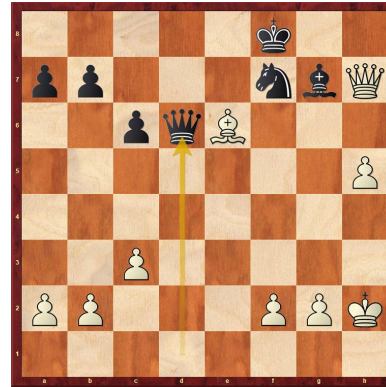
22.Bb3?? For some reason, I hesitated, and played Bxg5 one move too late. On move 22 it wins (because of 22...hxg5 23.h6), but on move 23 it loses.) 22... Ng8 23.Bxg5?? hxg5 24.Nxg5 Here, White does not have anything to justify his sacrifice. 24...Nxe5 25.Rxd8 Qxd8?? [D]



The wrong recapture. Black should have played 25...Rxd8 26.Bxe6 Qe7 27.Bxf7 Qxg5 28.Qxg8 Ke7 29.Be8. 26.Rxe5 Nh6 I was not expecting this move. I was expecting 26...Nf6, which is equally as good as the text move. I thought for about two minutes here, running my clock down to about one minute, and then I simply had to make a move. 27.Nxf7?! The best way to go was 27.Ne4, with equality. 27...Nxf7 28.Rxe6?? Losing material. 28.Re3 is still equal. 28...Rxe6 29.Bxe6 Qd1+ 30.Kh2 Qd6+ [D] (Next col.) 0-1

I blundered an exchange and lost the second game. In the third game, my opponent was 2-0, and I was 0-2, and he offered a quick draw which I accepted. I went back to my hotel room to watch Game 3 of the Phillies-Padres series, went to bed, and then woke up at 3:30 AM CST (10/22/2022) to begin my long journey home back to Douglassville. (Text cont. next

Position after 30...Qd6+



(Cont. from prev. col.) After 16 hours, I made it home at 8:30 PM EST, and, you guessed it, watched the Phillies win Game 4.

I had a wonderful time in St. Louis! It was a trip I had been looking forward to for years. The World Chess Hall of Fame was amazing! Hopefully, I'll return in the future, when the renovations at the Saint Louis Chess Club are completed, and maybe watch a round or two of a world class event.