

~ En Passant ~

Newsletter of the North Penn Chess Club, Lansdale, PA – Spring 2022, Part 1

E. Olin Mastin, Editor

North Penn Chess Club
500 West Main Street
Lansdale, PA 19446

www.northpennchessclub.org
(215) 699-8418 donfunk@msn.com

This issue features NPCC Games from the 2022 Winter Robin and a Game from the 2021 November/December Swiss.

The purpose of these newsletters is to include as many games as possible by NPCC players irregardless of the strength of the participants.

Thanks to all for submitting games!

Game from the NPCC 2021 Nov-Dec Swiss Tournament

Round: 4

Submitted by Terance with his comments (as edited) and selected Fritz/*Stockfish comments [shown thus].

White: Terance Hall (1876)

Black: Lucas Grenda (1377)

Date: 12/10/2021

*(Please copy and paste the HTML link at the end of this article into your browser to read the complete commentary, Stockfish comments, and to be able to play thru the moves.)

[D90: Grünfeld: 4 Nf3 Bg7 sidelines] **1.d4 Nf6 2.c4 g6 3.Nc3 d5 4.Nf3 Bg7 5.h4 Nc6** [5...dxc4= 6.e4 c5 7.d5 b5 8.h5 0-0 9.hxg6 fxg6 10.e5 Ng4 11.d6 e6, etc...]

Zhou,W (2646)-Li,C (2748) Zaozhuang 2015 1-0] **6.Bf4N** [6.h5+- Stockfish: 6...gxh5 7.cxd5 Nxd5 8.e4 Nxc3 9.bxc3 Bg4 10.Rb1 Na5 11.Rb5 c6, etc...; 6.Bg5 e6 7.e3 h6 8.Bf4 0-0 9.Rc1 a6 10.Be2 dxc4 11.Bxc4 b5, etc... Seres,L (2408)-Wlodarczyk,O (2296) Germany 2015 1-0 (39)] **6...a6** [6...dxc4= remains equal. 7.e3 Be6] **7.e3+- e6 8.Bd3**

[D]



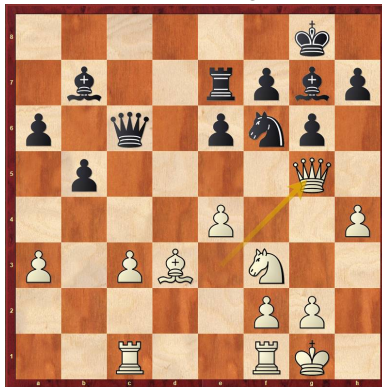
(Text

cont. next col.)

(Cont. from prev. col.) [White is better.] **8...dxc4 9.Bxc4 Ne7 10.e4 b5 11.Bd3 Bb7 12.a3 Rc8 13.0-0 0-0 14.Qd2 c5 15.dxc5 Rxc5 16.Qe3** [Stockfish: 16.Rad1 Ng4 17.Be2 Qxd2 18.Nxd2 Ne5 19.Nb3 Rc7 20.Be3 Rfc8 21.Bb6 Rc6, etc...] **16...Qc8?! [D]**



17.Bd6! Rxc3 [17...Rc7+- Stockfish: 18.e5 Ng4 19.Qf4 h5 20.Ne4 Rd8 21.Bxc7 Nd5 22.Qc1 Qxc7, etc...] **18.bxc3+- Re8** [18...Qd8 keeps fighting.] **19.Rac1 Qc6 20.Bxe7 Rxe7 21.Qg5?! [D]**



21...h6+= 22.Qf4 Nxe4 23.Bxe4 [White should play 23.c4+= bxc4 24.Rxc4] **23...Qxe4= 24.Qb8+ Kh7 25.Qd8 [D]**



[25.Qg3=+] **25...Qg4! [D]** (Next col.)
(Text cont. next col.)

Position after 25...Qg4! (From prev. col.)



[Stockfish: 25...Bf6! 26.Rfe1 Qf4 27.Qd2 Qf5 28.Qd1 Qc5 29.a4 Rc7 30.axb5 axb5, etc...] **26.Qd1?** [26.Qxe7 is a self-mate. 26...Bxf3 27.Qg5 hxg5 28.g3 Qh3 29.hxg5 Qh1#; 26.Ng5!+- hxg5 27.f3 Qxh4 28.Qxe7 Be5?! 29.Qxf7+ Kh6 30.Qf8+ Kh7 31.f4 Bxf4 32.Rxf4 Qxf4, etc...] **26...Bxf3** [Black should try 26...Kg8+- 27.Qd3 Bd5] **27.Qxf3+= Qxh4 28.Qc6 Be5 29.g3 Qg5= 30.Qg2** [Of course not 30.Qxa6 Bxg3 31.fxg3 Qc5+ 32.Kh1 Ra7+-; 30.Kg2= might be stronger. 30...Qf5 31.Qxa6] **30...Qd2** [Better is 30...Qf5-+] **31.Qc6 [D]**



[31.Qe4= keeps the balance. 31...Qg5 32.Qd3] **31...Qg5** [31...Rc7!+- 32.Qe4 Qd6] **32.Rcd1** [Don't play 32.Qxa6 Bxg3 33.fxg3 Qc5+ 34.Kh1 Ra7+-; Stockfish: 32.c4 Rc7 33.Qxa6 Bxg3 34.fxg3 Qxg3+ 35.Kh1 Qh3+, etc...] **32...Rc7 33.Qxa6 Bxg3** [33...Rxc3+= 34.Qb7 Kg8] **34.fxg3= Qxg3+ [D]** (p.2) [Weighted Error Value: White=0.61/Black=0.59] $\frac{1}{2}$ - $\frac{1}{2}$ Copy and paste the link below into your browser:

(Text cont. p.2)

Position after 31...Qxg3+ (From p. 1)



(Cont. from p.1)

<https://share.chess-base.com/SharedGames/game/?p=zTM+KNfguDI9q+JTGc688LSo5ove02f9EC-TDzVZBiBgjg09Cg3HW0las1TWuTrMN>

Game from the NPCC 2022 Winter Robin Tournament

Round: 1

Submitted by Joe with his comments and selected Fritz comments [shown thus].

White: Joe Mucerino (2143)

Black: Eric Funk (2045)

Date: 1/7/2022

*(Please copy and paste the HTML link at the end of this article into your browser to read the complete commentary and to be able to play thru the moves.)

[D05: Colle System with ...e6] **1.d4 d5 2.Nf3 Nf6 3.e3 c5 4.c3 Nbd7 5.Nbd2 Qc7 6.Bd3 e5 7.Nxe5** [7.e4 cxd4 8.cxd4 dxe4 9.Nxe4 Nxe4 10.Bxe4 Nf6 11.Bc2 e4 12.Ne5 Bb4+, etc... Jussupow,A (2570)-Gomez Esteban,J (2498) Leon 2008 1-0] **7...Nxe5 8.dxe5 Qxe5** [The position is equal.] **9.c4N** [D]



(Joe - White must be a bit careful here. If 9.0-0 Bd6 and White is already worse. Other good moves for White include 9.e4, 9.Bb5+ and 9.Nf3.) [9.Bb5+ Bd7 10.Bxd7+ Nxd7 11.0-0 (11.Qa4 Be7 12.0-0 Qe6 13.e4 dxe4 14.Nxe4 0-0 15.Ng5 Qf5 16.Nf3 Nb6 17.Qb5 Rfd8, etc... Borik,O (2400)-Pachman,L (2325) Germany 1995 1-0 (43)] 11...0-0-0 12.Qa4 Bd6 13.Nf3 Qh5 14.h3 Nf6 (Text cont. next col.)

(Cont. from prev. col.) 15.Qh4 Qf5 16.c4 Rhg8 17.Qg5 Qd3, etc... Wockenfuss,K (2415)-Thesing,M (2355) Germany 1987 ½-½: 9.Nf3 Qh5 10.c4 Bd6 11.cxd5 0-0 12.Be2 Qxd5 13.Qxd5 Nxd5 14.0-0 Nf6 15.Rd1 Rd8, etc... Petrovs,V-Stahlberg,G Podebrady 1936 0-1 (62)] **9...Bg4 10.Qb3** [10.Nf3=Qh5 11.cxd5] **10...0-0-0=+ 11.cxd5 Nxd5?!** (Joe - Black can keep up the pressure with 11...Qxd5!) **12.Nc4 Qh5 13.Bd2 Be7** [13...Nb4= 14.Be4 (14.Bxb4 cxb4 15.Rc1 Kb8=) 14...Be6] **14.Rc1 Rhe8 15.0-0** (With initiative) [D]



[And now Be1 would win. White has some pressure.] **15...Kb8??** (Joe - I think Black realized that 16.e4 was going to be strong, but he needed to drop his Knight back, something like 15...Nb6.) [15...Nb6= and Black stays safe.] **16.e4+-** (Joe - White is winning.) **16...Nb4?** (Joe - Better was 16...Nc7.) [16...Nc7 17.Na5 Bc8 18.Nc6+ Ka8] **17.Bf4+** [White is clearly winning.] **17...Kc8** [D]



18.Qxb4! Rxd3 (Joe - Of course, not 18...cxb4 19.Nb6 mate.) [18...Qh6 19.Nd6+] **19.Qa5 Bd8** [Inhibits Qc7+.] **20.Qxa7 Qg6 21.Qb8+ Kd7 22.Qxb7+ Ke6 23.Qc6+** [D] (Next col.) [Weighted Error Value: White=0.12 (very precise) /Black=0.64] [Better is 23.Ne5] **1-0** Copy and paste the link below into your browser:

<https://share.chess-base.com/SharedGames/game/?p=V1TsWNFn7Uutunsw0FKz+z/GVmyZ82ASVys42qRKQ7RO3BUMfSWVJz9W/fGozW0b>

Position after 23.Qc6+ (From prev. col.)



Game from the NPCC 2022 Winter Robin Tournament

Round: 2

Submitted by Terance with his comments (as edited) and selected Fritz/*Stockfish comments [shown thus].

White: William Parberry (1994)

Black: Terance Hall (1884)

Date: 1/14/2022

*(Please copy and paste the HTML link at the end of this article into your browser to read the complete commentary, Stockfish comments, and to be able to play thru the moves.)

[B19: Classical Caro-Kann: 4...Bf5 main line]

1.e4 c6 2.Nc3 d5 3.d4 [D]



3...dxe4 4.Nxe4 Bf5 5.Ng3 Bg6 6.h4 h6 7.Nf3 e6 8.h5 Bh7 9.Bd3 [D]



9...Bxd3 10.Qxd3 Nd7 11.Bd2 Ngf6 12.0-0-0 Bd6 13.Ne4 Nxe4 (Text cont. p.3)

(Cont. from p.2) 14.Qxe4 Nf6 [D]



15.Qe2 Qc7 16.Ne5 0-0-0 [16...Rc8!= keeps the balance.] 17.Rh3 Bxe5 [17...Kb8 18.Rb3 Rhg8 19.Rf3 Bxe5 20.dxe5 Nd7 21.Bb4 Nxe5 22.Rxd8+ Rxd8, etc... Krongold,B (1653)-Goncalves,M (1970) Sao Paulo 2014 0-1 (33); Stockfish: 17...c5 18.Rc3 Nd5 19.Rf3 Bxe5 20.Qxe5 Qxe5 21.dxe5 Rhf8, etc...] 18.dxe5 Nd5 [D]



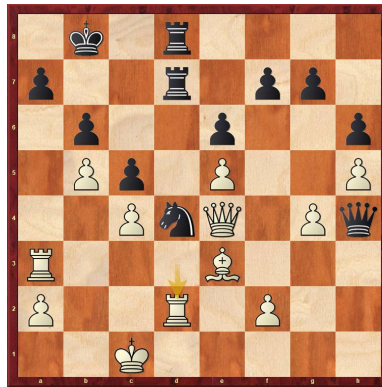
19.c4 [19.Ra3+-] 19...Ne7!+= 20.Ra3N [20.g4 c5 21.Bc3 Rxd1+ 22.Qxd1 Rd8 (22...Nc6 23.f4 Qe7 24.Rd3 Rd8 25.Rd6 f6 26.exf6 gxf6 27.Rxd8+ Nxd8 28.Qd3 e5 29.Qf5+ Qd7 30.fxe5 Qxf5 31.gxf5 fxe5, etc... Gribanov,V-Moroz,Y Bila Tserkva 2006 1-0 (78)) 23.Rd3 Rxd3 24.Qxd3 Qd8 25.Qe3 b6 26.Qf3 Kd7, etc... Heyder,F (2084)-Ozeran,V (2059) Magdeburg 2013 0-1 (41)] 20...Kb8 21.Re1 [21.Rd3+-] 21...c5= 22.b4 [22.Rd3=] 22...Nc6 [Stockfish: 22...a6 23.Bc3 Nc6 24.b5 axb5 25.cxb5 Nb4 26.Rd1 Nd5 27.Qe4 Nxc3 28.Rxc3 Rxd1+ 29.Kxd1 Qa5, etc...] 23.b5 [If 23.bxc5-+ Nd4 24.Qd1 Qxc5 25.Qa4 Rc8 26.Kb1 Qb6+ 27.Ka1 Rxc4 28.Qxc4 Rc8 29.Qxc8+ Kxc8, etc...] 23...Nd4 24.Qe4 [D]



cont. next col.)

(Text

(Cont. from prev. col.) 24...b6 25.g4 Rd7 26.Ree3 [26.Be3+=] 26...Qd8 [Stockfish: 26...f5 27.exf6 gxf6 28.Red3 Rd6 29.Kb1 Qd7 30.Bc1 a5 31.bxa6 Ka7 32.Qb7+ Qxb7 33.axb7+ Kxb7 34.Rd1 e5 35.Rg3 Kc6 36.a4 Kd7 37.Re3 Re6, etc...] 27.Red3 Qh4 28.Be3 Rhd8 [White should prevent ...Qh3.] [Stockfish: 28...Qh3 29.Kb2 Qf1 30.Rac3 Rhd8 31.Rc1 Qe2+ 32.Rd2 Qf3 33.Qf4 Qxf4 34.Bxf4 a6 35.a4 Nf3 36.Rxd7 Rxd7 37.Rc3 Ne1 38.Be3 axb5 39.cxb5 Rd5, etc...] 29.Rd2 [D]



29...Qh3 [29...Nf5!= is superior. 30.Rxd7 (30.Rad3 Rxd3) 30...Rxd7] 30.Kb2 Qf1 31.Rad3! Ne2 [D]



[Editor Note: White lost on time.] [Weighted Error Value: White=0.28/Black=0.25] [Stockfish: 31...Qe1 32.g5 Ne2 33.Rd1 Qb4+ 34.Rb3 Nc3 35.Rxd7 Rxd7 36.Rxb4 Nxe4 37.gxh6 gxh6 38.Rb3 Rd1 39.Bxh6 Rh1 40.Rf3 Rxh5 41.Be3 Kc8 42.Rxf7 Rxe5 43.Rxa7 Nd6 44.Bf4 Nxc4+ 45.Kc3 Re4 46.Bg3 Na5 47.Ra8+ Kd7 48.Ra7+0.00/61] 0-1 Copy and paste the link below into your browser: <https://share.chess-base.com/SharedGames/game/?p=N0cdtV3YgRIBFTQU0UhhEYg-mkxf3RU5oDyKklytY7Y9/Wk37rhoFXMfDyxf3tw3A>

Game from the NPCC 2022 Winter Robin Tournament
(Text cont. next col.)

(Cont. from prev. col.)

Round: 3

Submitted by Terance with his comments (as edited) and selected Fritz/*Stockfish comments [shown thus].

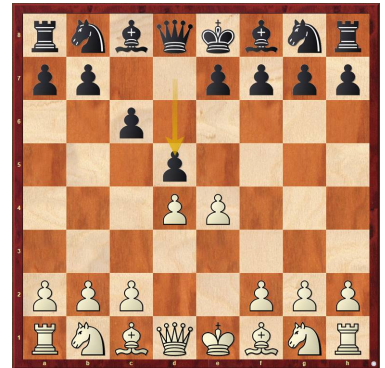
White: Karl Dehmelt, (2241)

Black: Terance Hall, (1884)

Date: 1/21/2022

*(Please copy and paste the HTML link at the end of this article into your browser to read the complete commentary, Stockfish comments, and to be able to play thru the moves.)

[B13: Caro-Kann: Exchange Variation and Panov-Botvinnik Attack] 1.e4 c6 (Terance: Yes I have started playing the Caro-Kann as Black these days. In this variation it is all book up until move 15 and then the game starts at an endgame with Queen, Rooks, and Bishop for each side.) 2.d4 d5 [D]

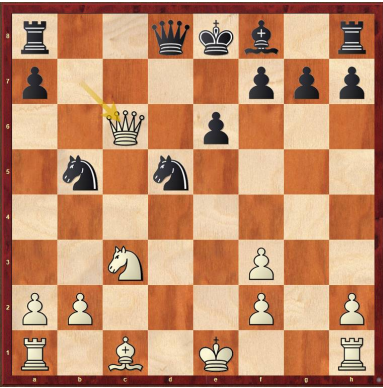


3.exd5 cxd5 4.c4 Nf6 5.Nc3 Nc6 6.Nf3 Bg4 [D]



7.cxd5 Nxd5 8.Qb3 Bxf3 9.gxf3 e6 10.Qxb7 Nxd4 11.Bb5+ Nxb5 12.Qc6+ [D] (p.4) 12...Ke7 13.Qxb5 Qd7 14.Nxd5+ Qxd5 15.Qe2 (Terance: The more common variation is Qxd5 exd5 which should lead to a draw also.) 15...f6 (Terance: I did not expect his Qe2 move, and remembered in my analysis that the next move should almost always be f6 to tuck the King away and the Bishop can move out.) 16.0-0 [The position is equal.] 16...Kf7 [D] (p.4) (Terance: Knowing that Rd1, (Text cont. p.4)

Position after 12.Qc6+ (From p.3)



Position after 16...Kf7 (From p.3)



(Cont. from p.3) and Be3 or Bf4 are coming, it was best to move the King to f7, in fact it is the only move not to get into trouble. I thought about Rd8, but that runs into Be3 and Rfd1 either way I must move the Queen and watch the a7 pawn.) **17.Rd1 Qb7** (Terance: The best choice for me and 2nd choice for the Stockfish chess engine which slightly preferred Qf5. I considered Qc6, but after White moves the Bishop he will get a tempo on my Queen with Rac8, and I must move it again. With Qb7 I avoid any immediate threats, I protect the a7 Pawn and d7 square, and eye the f3 and b2 Pawns. If a 2700+ GM played it which A.Grischuk did against B. Jobava it must be good!) [Stockfish: 17...Qf5 18.Be3 Be7 19.b3 a5 20.Rd7 Rhd8 21.Rad1 Rxd7 22.Rxd7 Qb1+, etc...] **18.Bf4** [18.f4 Rc8 19.Re1 Qb6 20.b4 a6 21.a3 Be7 22.f5 e5 23.Qa2+ Kf8 24.Be3 Qb7, etc...Jobava,B (2696)-Grischuk,A (2736) Khanty-Mansiysk 2009 1/2-1/2 (44); 18.Qe4 Qxe4 19.fxe4 Bc5 20.Rd7+ Kg6 21.Kf1 Rhd8 22.Rxd8 Rxd8, etc... 1/2-1/2 (27) Lanka,Z (2413) -Feuerstack,A (2461) Bargteheide 2015 **18...Bc5N [D]** (Next col.) (Terance: Be7 seems slightly better as the Bishop on c5 gets harassed but still keeps the position equal. I thought about Be7 but seemed cramped and Bc5 put some pressure on f2 and ready to oppose the White bishop if it goes to e3.) [18...Be7= 19.Re1 (Stockfish: 19.Rac1 Rac8 20.Be3 h5 21.h3 a5 22.b3 g5 23.Rxc8 Rxc8 24.Rd4 f5, etc...) [19...e5 (Text cont. next col.)

Position after 18...Bc5N (From prev. col.)



(Cont. from prev. col.) 20.Bg3 Bb4 21.Qc4+ Kg6 22.Re4 Bd6 23.Rg4+ Kh6 24.Rh4+ Kg6 25.Qd3+ 1-0 (25) Drexel,C (2110)-Bohne,L Landau 1996] **19.b4!+-Bb6** (Terance: Be7 seems slightly better as now White gained a tempo with a Pawn push. So, in hindsight it was best to play Be7 on move 18. Well, I chose this move as it protects the c7 square, and more importantly, the d8 square where I am planning to exchange off the Rooks if I can. Note: DON'T TAKE THE POISON PAWN!) [Stockfish: 19...Be7 20.b5 a6 21.a4 axb5 22.axb5 Rxa1 23.Rxa1 Rd8 24.Be3 Qd5, etc...] **20.Rd6** (Terance: Best move! Karl after the game thought that a4 should be played. Stockfish top 3 moves listed Rd6 as 1st, Bd6 as 2nd, and a4 as 3rd. So, I think he played the best move.) [Stockfish: 20.a4 Rhd8 21.Bd6 e5 22.Rac1 Rac8 23.Rxc8 Qxc8 24.a5 Bd4 25.Bc5 Kg6, etc...] **20...Rhe8 21.Re1** [21.Rad1+- Black must now prevent Rd7+. 21...Rad8 22.a4] **21...e5+= [D]**

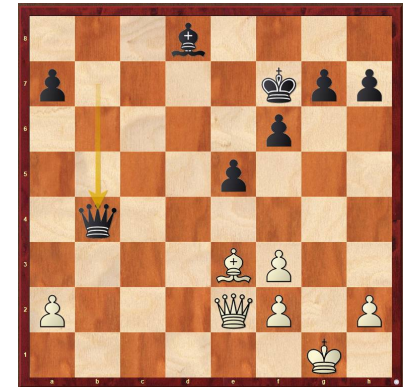


(Terance: The Key move! As Qc8 and Qe7 did not cut it; so, it only left this move e5. Though it allows a check on c4, but after Kf8, White has nothing and has to watch his f3 pawn. At this point Karl spent a massive amount of clock time to figure out all the variations looking for an advantage as to what was the best move. (Text cont. next col.)

(Cont. from prev. col.) Meanwhile I figured out the rest of the game to mostly a draw.) **22.Red1!** (Terance: The only move to me that made sense.) **22...Rad8 [D]**



(Terance: Here I felt comfortable in drawing as I force the exchange.) [Don't blunder 22...exf4? 23.Rd7+ Kf8 24.Qxe8+!! (24.Rxb7? perishes. 24...Rxe2 25.Rdd7 Bd8-+) 24...Rxe8 25.Rxb7+-; 22...Re7 23.Be3] **23.Rxd8 [White is slightly better.] 23...Rxd8 24.Rxd8 Bxd8 25.Be3** [Stockfish: 25.Bd2 Qd5 26.a4 Bb6 27.Kg2 Qb3 28.a5 Bd4 29.Be1 h5 30.Kf1 Ke7 31.h3 Kd6, etc...] **25...Qxb4 [D]**



(Terance: This pretty much forces the draw as Bxa7, then Qb1 and Qg6. Back and forth keeps the King moving. If White tries to block the check with his Queen then the a2 Pawn drops.) [Weighted Error Value: White=0.07/Black=0.18] **1/2-1/2** Copy and paste the link below into your browser: <https://share.chess-base.com/SharedGames/game/?p=6tUs8la1ZMS2GGqQ5i+3DgLUgV1vg/Zei9JjZYNKYriTJbl-PuIbRh/IoL2/rRUN>

Game from the NPCC 2022 Winter Robin Tournament (Text cont. p.5)

(Cont. from p.4)

Round: 7

Submitted by Joe with his comments and selected Fritz comments [shown thus].

White: Joe Mucerino (2143)

Black: Kevin Li (2060)

Date: 1/21/2022

*(Please copy and paste the HTML link at the end of this article into your browser to read the complete commentary and to be able to play thru the moves.)

[D05: Colle System with ...e6] **1.d4 d5**

2.Nf3 e6 3.e3 c5 4.c3 Nc6 5.Bd3 Bd6

6.Nbd2 Nf6 7.0-0 0-0 [D]



8.dxc5 Bxc5 9.e4 Qc7 10.Qe2 h6

11.Bc2 Bb6 (Joe - I had to start thinking after this move. Normally, White gains a tempo on the Bishop with Nb3, and only then does the Bishop retreat.) **12.a4**

[12.Kh1 Bd7 13.h3 Nh5 14.Nb3 dxe4

15.Qxe4 f5 16.Qh4 Be8 17.Qc4 Bf7, etc... Rodrigues,E (2303)-Barbosa,E (2449) Pocos de Caldas 2014 0-1 (41)] **12...a6 13.a5N**

[13.h3=; 13.g3 Bd7 14.Kg2 Rad8 15.h3 e5

16.exd5 Nxd5 17.Nc4 Qc8 18.Rh1 Bc7

19.Qe4 Nf6, etc... Mamedyarov,S (2660)-Volkov,A (2652) Mallorca 2004 1/2-1/2 (38)]

13...Ba7 14.Ra4 [D]



(Joe - In one of my U.S. Open games from last year, I swung my Rook on a1 to the Kingside in a similar manner.) **14...Bd7**

15.e5 Ne8 [Better is 15...Nh7] **16.Rh4!=**

[16.Qd3 f5 17.Qe2 g5+] **16...f6 17.Qd3**

[Aiming for Qh7+] **17...f5** (Joe - Normally,

I don't like closed positions, but the Pawn on e5 is a thorn in Black's position.) **18.Re1**

(Text cont. next col.)

(Cont. from prev. col.) **18...Ne7**

[18...Nxa5+= 19.Nd4 Bxd4 20.Qxd4 Qd8]

19.Nf1 [19.Nb3+] **19...Bb5**

[19...Rf7!+=] **20.Qd1 Ng6** [20...Qc5

21.Be3 Qc8 22.Bxa7 Rxa7 23.g4+;

20...Nc6=] **21.Rh3!+= Qf7 22.Ng5!?**

(Joe - Interesting, but the computer said to stick with development and 22.Ng3.)

22...Qe7 [22...hxg5 23.Qh5 Nh4

24.Qxg5 Nxd4 25.Qxg2+- (25.Kxg2

Bc5+); 22...Qd7!+=] **23.Qh5+- Nh8**

[D]



[23...Nxe5+- 24.Rxe5 Nf6] **24.Ng3?**

[24.Rg3! was winning.] [24.Rg3!+-]

24...Nc7? [D]



(Joe - Now White is winning. Black should have tried 24...Bd7. After

25.Nxe6 Bxe6, the Bishop helps guard the Pawn on f5, whereas the Knight on e6 offers no additional protection.)

[24...Qc5 25.Be3 Qe7 26.Nxe6! Qxe6

27.Bxa7+- (27.Nxf5 Bxe3 28.Rxe3

Bd7+-); Better is 24...Rc8+=]

25.Nxe6?? (Joe - The computer win is

25.Nh7! Kxh7 26.Bxh6 Be8 27.Bg5+

Bxh5 28.Rxh5+ Kg8 29.Bxe7 Rfe8

30.Bd6.) **25...Qxe6** [25...Nxe6?

26.Nxf5 Rxf5 27.Qxf5+-; 25...Be8=

26.Qf3 Qxe6 27.Bxf5 Qe7] **26.Nxf5**

Be8? (Joe - This is the move I over-

looked.) [Black should play 26...Rxf5+-

27.Bxf5 Qf7] **27.Rg3= Bg6** (Joe - Of

course, not 27...Bxh5?? 28.Rxg7 mate.)

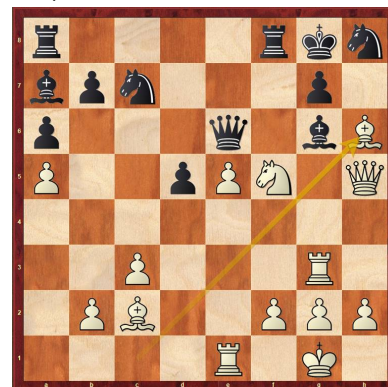
[27...Bxh5? 28.Rxg7#] **28.Bxh6?? [D]**

(Next col.) **28...gxh6??** (Joe - Black

should have played 28...Bxf2+ here.)

(Text cont. next col.)

Position after 28.Bxh6?? (From prev. col.)



(Cont. from prev. col.) [28...Bxh5?

29.Rxg7#; 28...Rf7 29.Rxg6 Nxg6 30.Bxg7

Rxg7 31.Nh6+ (31.Nxg7? Kxg7 32.Qg5

Re8+-) 31...Kf8 32.Qf3+ Rf7 33.Nxf7 Qxf7

34.Bxg6 Qxf3 35.gxf3; 28...Bxf2!+- 29.Kxf2

Rxf5+ 30.Bxf5 Rf8] **29.Nxh6+??** (Joe -

Winning for White is 29.Re2!, defending f2.

But those are not the moves you look for

during a sacrificial attack.) [29.Re2+- has

better winning chances. Hoping for Nd4.

29...Kf7 30.Nxh6+ Kg7 31.Nf5+ Rxf5

32.Bxf5] **29...Kg7+- 30.Nf5+? [D]**



(Joe - Again, White needed to play 30.Re2.)

[30.Rf1+- and life is bright.] **30...Rxf5!+-**

(Joe - Now Black is better.) **31.Bxf5 [D]**



31...Bxf2+! [With attack!] [Black has

strong attack.] **32.Kxf2 Rf8 33.Kg1??**

(Joe - I gave up too easily here. White is

still worse but still in the ballgame after

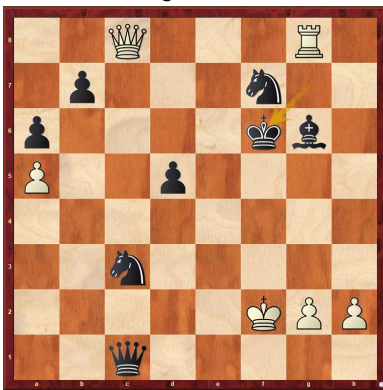
33.Rxg6+ Qxg6 34.Qxg6+ Nxg6 35.g4.)

(Text cont. p.6)

(Cont. from p.5) **33...Rxf5+** [Avoid the trap 33...Qxf5? 34.Qe2+ (34.Qxf5? Rxf5 35.e6 Kf6+)] **34.Qh4 Nf7 [D]**



[Prevents Qd8] [Inferior is 34...Rxe5 35.Qd4 Nf7 36.Rg5!]=] **35.Qb4 Nb5 36.Rge3 Rxe5 37.Qc5 Rxe3 38.Rxe3 Qd6 39.Qc8** [Better is 39.Qxd6 Nfxd6 40.g4] **39...Qf4 40.Re8** [Better is 40.Re1] **40...Qc1+ 41.Kf2 Qxb2+** [Better is 41...Nbd6 42.Qc5 Qxb2+ 43.Ke1 Nxe8 44.Qxd5 Qxc3+ 45.Qd2 Qa1+ 46.Qd1 Qxa5+ 47.Kf2 Qc5+ 48.Kf1 Ne5 49.g3 Bd3+ 50.Qxd3 Nxd3 51.Ke2 Ne5 52.h3 Qc2+ 53.Kf1 Nd3 54.Kg1 Qf2+ 55.Kh1 Qxg3 56.h4 Nf2#] **42.Kg1 Qc1+ 43.Kf2 Nxc3** [(-> ...Ne4+)] **44.Rg8+ Kf6 [D]**



[Weighted Error Value: White=1.04/Black=0.50] [Better is 44...Kh7 45.Re8 Ne4+ 46.Rxe4 Qxc8 47.Re2 Qc5+ 48.Kg3 Qd6+ 49.Kf2 Qf4+ 50.Ke1 Ne5 51.Rxe5 Qxe5+ 52.Kf2 Bd3 53.h3 d4 54.Kg1 Qg3 55.h4 Qxh4 56.g4 Qg3+ 57.Kh1 Be4#] **0-1**

Copy and paste the link below into your browser:
<https://share.chess-base.com/SharedGames/game/?p=oeYHp9ag9govC/nDiYVeFzgg3wfQEIs3d6Wq4KK8V+k8FKAb8yj0OOOUhRRZ/eQ>

Game from the NPCC 2022 Winter Robin Tournament Round: 4

Submitted by Joe with his comments and selected Fritz comments [shown thus]. (Text cont. next col.)

(Cont. prev. col.)

White: Terance Hall (1884)
Black: Joseph Mucerino (2143)
Date: 1/31/2022

*(Please copy and paste the HTML link at the end of this article into your browser to read the complete commentary and to be able to play thru the moves.)

[D06: Queen's Gambit: Symmetrical and Baltic Defences] (Editor Note – Played at the Wissahickon Library) **1.d4 d5 2.c4 Bf5!?** (Joe - I decided to do something a bit different.) **3.Nc3** (Joe - Not bad, but I think the best move is 3.cxd5.) **3...e6 4.Qb3 Nc6** (Joe - Black simply must keep applying pressure on White's position, or he will be creamed.) **5.Nf3?** (Joe - White had to play 5.cxd5 or 5.e3.) **5...Nb4! [D]**



(Aiming for ...Bc2.] **6.e4** [6.cxd5 Bc2 7.Qc4 exd5 8.Qb5+ c6 9.Qxb7 Rb8 10.Qxa7 Bd6 11.Bg5 Qc8 12.e3 Ra8, etc... ½-½ (14) Poluektov,Y (2282)-Bondarchuk,S (2334) Kharkov 2003] **6...dxe4 7.Ng5??N [D]**



(Joe - White had to tell Black's Knight to take a hike with 7.a3 or 7.c5.) [7.a3+; 7.c5 a5 8.a3 exf3 9.axb4 Qxd4 10.Be3 Qd7 11.bxa5 c6 12.Na4 Rxa5 13.Rd1 Qc7, etc... Ivanov,I (2472)-Mezentsev,V (2376) San Francisco 2000 0-1 (61)] **7...e3!+** [Inferior is 7...Qxd4 8.a3 h6 9.Be3=] **8.Nge4** [Black is winning.] [Don't play 8.Qa4+ c6 9.Bxe3 Nc2+ 10.Kd2 Nxe3 11.fxe3 Qxg5+] **8...exf2+** [Wrong is 8...Bxe4? 9.Nxe4 Qxd4 10.f3+] (Text cont. next col.)

(Cont. from prev. col.) **9.Kxf2 Bxe4?** (Joe - The computer preferred to develop with 9...Nf6.) **10.Nxe4 Qxd4+ 11.Kf3? [D]**



[11.Qe3 Rd8 12.Qxd4 Rxd4 13.Kf3] **11...f5 12.Ng5 Bc5 [D]**



(Joe - White must lose more material.) [Weighted Error Value: White=1.48/Black=0.20 (precise)] **0-1**
 Copy and paste the link below into your browser:

<https://share.chess-base.com/SharedGames/game/?p=eiW21y/W6r5XQIx-prlWZ9HV7UVWxp5al3e5rLb3GkaKSZzn7zqEQUFMxorGLBz7>

Game from the NPCC 2022 Winter Robin Tournament Round: 5

Submitted by Joe with his comments and selected Fritz comments [shown thus].

White: Joseph Mucerino (2157)
Black: Karl Dehmelt (2251)
Date: 2/9/2022

*(Please copy and paste the HTML link at the end of this article into your browser to read the complete commentary and to be able to play thru the moves.)

[A48: 1 d4 Nf6 2 Nf3 g6: Torre, London, and Colle Systems] (Joe - A special thanks to the Chaturanga Chess Club for hosting this makeup game.) **1.d4 c5 2.e3 Nf6 3.Nf3 g6 4.Bd3 Bg7 5.c3 [D]** (p. 7) (Text cont. p. 7)

Position after 6.c3 (From p.6)

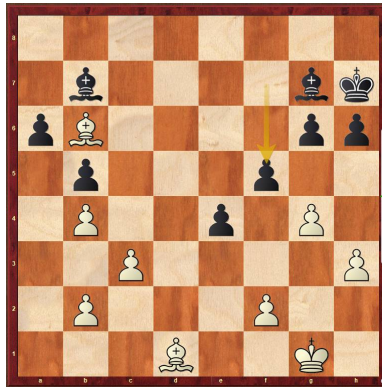


(Cont. from p.6) **5...cxd4N** [5...b6 6.0-0 Bb7 7.b4 d6 8.Nbd2 0-0 9.a4 Nbd7 10.a5 Rc8 11.a6 Ba8, etc... Sergeev,V (2447)-Kuzmicz,K (2408) Polanica Zdroj 2009 ½-½ (36)] **6.exd4** (Joe - White captures in this direction so the Bishop on c1 can develop easily.) **6...d6** **7.Bg5 Nc6** **8.0-0** [White has an edge.] **8...0-0** **9.Re1** [Prevents e5.] **9...Qb6** **10.Qb3 Qxb3** (Joe - This surprised me a little bit because now White can open the a-file.) **11.axb3 h6** **12.Bc1?!** (Joe - A bit retrograde, I know, but I did not want to trade off my Bishop on f6, it can be harassed on f4 or h4, on e3 it blocks my Rook, and on d2 it blocks the Knight on b1 from developing.) **12...Bd7** **13.Nbd2 Rfe8** **14.Nc4 Bg4** **15.Nh4 Rad8** **16.h3 Bc8** **17.Bc2** [Better is 17.b4] **17...e5!=[D]**

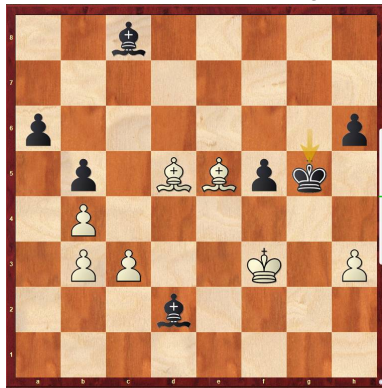


18.dxe5 dxe5 **19.Na5 Nxa5** **20.Rxa5 e4** [White must now prevent ...b6.] **21.g4** (Joe - Black was threatening to win the Knight with 21...g5.) **21...a6** **22.Ng2 b6** **23.Ra1 Bb7** **24.Ne3?** (Joe - The computer did not like this move at all, preferring to develop my Bishop on c1 instead. I was afraid that Black's idea was to play 24...Nd7-e5-f3+, so I wanted to play 25.Nc4 to cover the e5 square, and to threaten 26.Nd6 to boot.) **[24.Be3=]** **24...Nd5?** [D] (Next col.) (Joe - Trading off the Knight surprised me. The computer recommended 24...b5 to prevent 25.Nc4 which I showed in the last note.) **[24...b5!+=]** **25.Nxd5+= Rxd5** **26.Be3 b5** **27.b4 Rd7** **28.Bb3 Kh7** **29.Rad1 Red8** (Text cont. next col.)

(Cont. from prev. col.) **30.Bb6** [30.Rxd7+= was preferable. 30...Rxd7 31.h4] **30...Rxd1=** **31.Rxd1 Rxd1+** **32.Bxd1** [Endgame KBB-KBB] **32...f5** [D]



(Joe - This is a completely equal ending, but I found a way to mess it up.) **33.Bc7 Bf6** **34.Bb3 Bc8** **35.gxf5 gxf5** **36.Bd5 Kg6** **37.f3 exf3** **38.Kf2 Bg5** **39.Kxf3 Bc1** **40.b3 Bd2** **41.Be5 Kg5** [D]

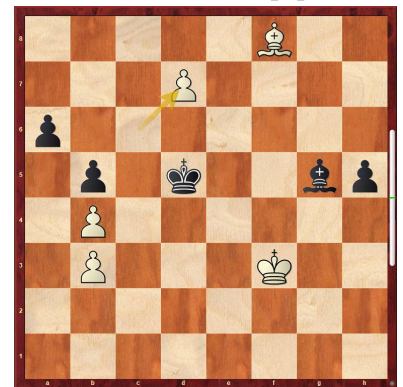


[41...f4!]= **42.Ke2** (Joe - Interesting is 42.Bf4+ Bxf4 43.h4+ Kxh4 44.Kxf4 Kh3, but that is still equal.) **[42.Bf4+!+= Bxf4 43.h4+ Kxh4 44.Kxf4]** **42...Bc1** **43.c4 f4** **44.c5** (Joe - This is still equal.) **44...Bxh3** **45.c6 Bc8** [45...Kf5+= is superior. 46.Bd6 Bg4+ 47.Kf2 Kf6] **46.Bf7?** (Joe - I thought that this was a good move, perhaps close to winning. I wanted to play 47.Be8 and 49.Bd7. The computer recommended trading water with 46.Bf3. Now Black has a big advantage.) **[46.Bd6!+= and White is okay.]** **46...Kf5?** (Joe - Black loses a chunk of his advantage. Best was 46...Bg6+ ((also strong is 46...h5)) 47.Kf1 Be3.) **[46...Bg4+-+ 47.Ke1 Be3]** **47.Bg7+= Ke4** [47...Be6+= 48.c7 Bc8] **48.Be8??** [D] (Next col.) (Joe - This looks like it should lose after 48...f3+ 49.Ke1 Bg5.) **[48.Bh5=]** **48...Be6??** (Joe - Now the ending is dead equal again!) [Black should try 48...f3+!+-+ 49.Ke1 Bg5] **49.Bd7?** (Joe - This winning try is a mistake. White should try to secure the draw with something like 49.Bh5 Be3 50.Bf3+ Kf5 51.Bxh6.) **[49.Bh5= and** (Text cont. next col.)

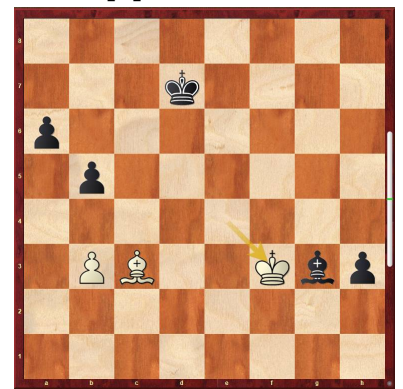
Position after 48.Be8?? (From prev. col.)



(Cont. from prev. col.) White has nothing to worry.] **49...f3+** **50.Ke1 Kd5** [And now ...Bg5 would win.] **51.Kf2 Bg5** **52.Kxf3??** (Joe - Another blunder that should lose. Trading Bishops was the best chance.) **[52.Bxe6+-+ Kxe6 53.Bf8]** **52...h5?** (Joe - The right idea, but Black misses a nuance. Black should trade on d7 first, then play on h5. Now, White can put up more resistance with 53.Bxe6 Kxe6 54.Be5 Be7 55.c7 Kd7.) **[52...Bxd7--+ 53.cxd7 h5]** **53.Bf8??** (Joe - I simply had to play 53.Bxe6. Now Black is winning easily.) **[53.Bxe6+-+ Kxe6 54.Be5]** **53...Bxd7--+ 54.cxd7** [D]

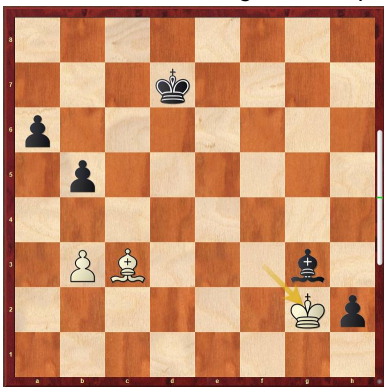


[KB-KB] **54...Ke6** **55.Ke4 Kxd7** [Hoping for ...Be7.] **56.Kd5 Be7** **57.Bg7 Bxb4** **58.Be5 Be1** **59.Kc5 Bf2+** **60.Kd5 h4** **61.Ke4 Bg3** **62.Bc3 h3** **63.Kf3** [D]

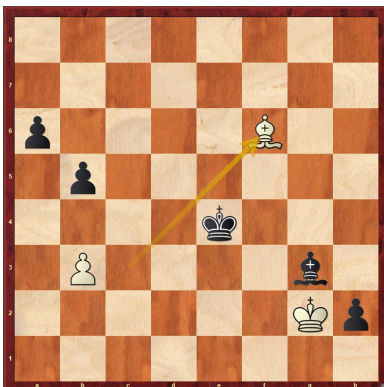


63...h2! **64.Kg2** [D] (p.8) **64...Ke6!** **65.Ba5** (Text cont. p.8)

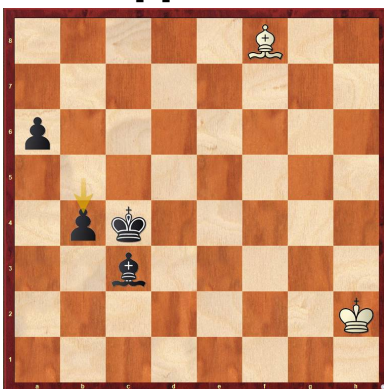
Position after 64.Kg2 (From p.7)



(Cont. from p.7) [65.Bd4 a5] **65...Kd5!**
66.Bc3 [66.Bb6 Bd6] **66...Ke4!** **67.Bf6**
[D]



[67.Bg7 a5] **67...Kd3!** [(-> ...b4!)]
68.Be7 **68...Kc3!** **69.b4** **69...Kc4!**
[Black mates.] **70.Bf8** [70.Bf6 Kxb4]
70...Be1 **71.Kxh2** **Bxb4** **72.Bg7** **Bc3**
73.Bf8 **b4** **[D]**



[Weighted Error Value:
White=0.77/Black=0.47] **0-1**

Copy and paste the link below into your browser:

<https://share.chess-base.com/SharedGames/game/?p=lfJrjoxdgifVdM6Y8FoPvbn6ZasUNRd+PAC/Im-dKnFefWG/qCWLrtY8mXZJwYRdR>

**Game from the NPCC 2022
Winter Robin Tournament
Round: 5**

(Text cont. next col.)

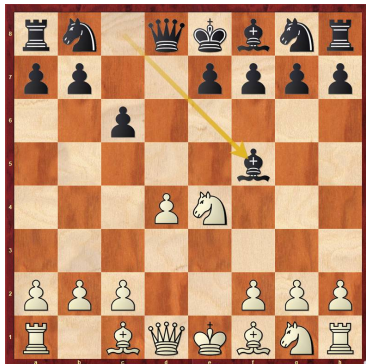
(Cont. from prev. col.) Submitted by Terance with his comments (as edited) and selected Fritz/*Stockfish comments [shown thus].

White: Jonathan Xu(2084)

Black: Terance Hall (1884)

Date: 2/4/2022

*(Please copy and paste the HTML link at the end of this article into your browser to read the complete commentary, Stockfish comments, and to be able to play thru the moves.) [B19: Classical Caro-Kann: 4...Bf5 main line] **1.e4 c6 2.d4 d5 3.Nd2 dxe4 4.Nxe4 Bf5 [D]**



(Terance: Going into the main line Caro Kann with Bf5 which I didn't expect from Johnathan.) **5.Ng3 Bg6 6.Nf3 Nd7 7.h4 h6 8.h5 Bh7 9.Bd3 [D]**



9...Bxd3 10.Qxd3 Ngf6 11.Bd2
[Stockfish: 11.Bf4 e6 12.0-0-0 Qa5 13.Kb1 Rd8 14.Ne4 Nxe4 15.Qxe4 Nf6 16.Qe5 Qxe5, etc...]
11...e6 12.0-0-0 Qc7 (Terance: My other choice was Qb6, but I could not see any good follow ups. Qc7 eyes the e5 and f4 squares. It also allows the b-Pawn to move in certain situations.) [Stockfish: 12...Be7 13.Ne4 0-0 14.Kb1 c5 15.g4 Nxg4 16.Qe2 Qb6 17.Ne5 Ndx5 18.dxe5 f5, etc...]
13.Kb1 0-0-0 (Terance: I feel Black gets some positional dynamic play when castling on the queenside as we shall see. 😊) **14.Ne4 Nxe4** (Terance: Blacks Pawn structure is solid so Black does not mine trading pieces.) **15.Qxe4 Nf6 [D]** (Next col.)
(Text cont. next col.)

Position after 15...Nf6 (From prev. col.)



(Cont. from prev. col.) (Terance: This move gains a tempo on the Queen and opens the d-file.) **16.Qe2 Bd6** (Terance: I didn't like moving the Bishop in front of the Rook but I did not see any better moves.) **17.g3 Rhe8** (Terance: This was played as a waiting move. My other choice is Rd7 which I would play if I had the same position again. Either way, they were the two top moves.) **18.Ne5** [18.Bc1 is more complex. 18...c5 19.Ne5 a6 20.f4 Nd5 21.dxc5 Bxc5 22.Rd3] **18...Bxe5** (Terance: The engines prefer c5 here.) [Better is 18...c5 19.Rh4 Bxe5 20.dxe5 Nd5 21.Rg4 Rg8 22.Bc1 g5 23.a3 Qc6, etc...]
19.dxe5+- Nd5 20.c4 (Terance: Seems like a reasonable move, but the engines like g4.) [White should try 20.g4+- Stockfish: 20...Ne7 21.f4 Rd5 22.c4 Rd4 23.Be3 Rxd1+ 24.Rxd1 Rd8 25.Bc5 Rxd1+ 26.Qxd1 b6, etc...]
20...Ne7!+= (Terance: Knowing the key move in this position, which is c5, so the Knight has f5 and c6 just in case if White moves a Pawn to g4.) **21.Bc3** [21.Qf3 is interesting. 21...Nf5 22.g4 Nd4 23.Qe4 c5 24.Be3] **21...c5 [D]**



(Terance: In my opinion a key move as the White bishop does not have the d6 square, or much scope now. The Knight (Text cont. p.9)

(Cont. from p.8) now has an out post on d4 by way of f4 or c6, if need be, and the Black Queen now has access to the White squares.) **22.Qe3N** (Terance: Not an easy task to find a good square for the White Queen.) [22.Qg4 Rxd1+ 23.Rxd1 Rd8 24.Rxd8+ Qxd8 25.Kc2 Qf8 26.Qe4 g6 27.Qf3 gxh5 28.Qxh5 Qg7, etc... Felgaer,R (2586)-Riazantsev, A (2700) Tromsøe 2013 1/2-1/2 (53); 22.g4 Nc6 23.Qe4 Rxd1+ 24.Rxd1 Rd8 25.Rxd8+ Qxd8 26.Kc2 Qg5 27.a3 Kd7, etc...Chan,J (2070)-Jiganchine,R (2221) Vancouver 2006 1/2-1/2 (39)] **22...Rxd1+** (Terance: Now it's time to trade.) **23.Rxd1 Nf5** [Better is 23...Rd8 24.Rxd8+ Kxd8] **24.Qf4 Rd8 25.Kc2** [25.Rxd8+= Qxd8 26.Kc2] **25...Rxd1= 26.Kxd1 Qd7+!** [D]



(Terance: Here I knew I had to play dynamically, as the Knight is perfectly placed, and White has g4 if he gets a chance; so, I had to check on the light squares to keep an attack going.) **27.Ke2 Qa4 28.Kf3?** (Terance: The move was g4, but looks risky as it is, but Kf3 gives me a big advantage.) [28.g4= remains equal. 28...Nd4+ 29.Bxd4 Qxc4+ 30.Kd2 Stockfish: 30...cxd4 31.Qxf7 d3 32.Qf3 a5 33.Ke3 Kc7 34.Qf7+ Kb6, etc...] **28...Qd1++** [Much worse is 28...Qxa2?! 29.g4 Ne7 30.Kg3= (30.Qxf7 Kd7=)] **29.Kg2 Qxh5 30.b4?** [D]

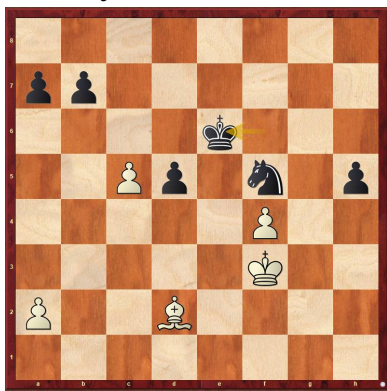


(Terance: Now Black is winning. I knew this move might be played. I also knew that the best way was just ignore the b4 (Text cont. next col.)

(Cont. from prev. col.) move which I learned from another similar game.) [30.g4+ was forced. 30...Qg6 (Stockfish: 30...Qh4 31.Bd2 Ne7 32.f3 Qg5 33.Qxg5 hxg5 34.Kf2 Nc6 35.Bc3 Kd7, etc...)] **30...Qe2+** (Terance: I knew this was the strongest move in the position as g5 is my follow up. The White Queen is running out of squares. I did not dare to take on b4 and bring his Bishop to a better square.) **31.bxc5** (Terance: What else!) **31...g5** [Inferior is 31...Qxa2 32.c6-+] **32.Qd2 Qxc4 33.Ba5** [D]

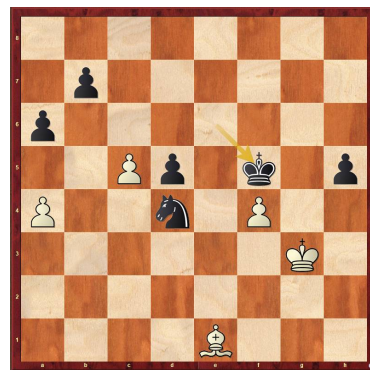


[Black must now prevent Qd8#.] **33...Qd5+** (Terance: Yes, I knew that Nd4 was the strongest, but I went with the simplest line to win.) **34.Qxd5 exd5** [Endgame KB-KN. Black is clearly winning.] **35.Kf3 Kd7 36.Kg4 Ke6 37.f4 gxf4 38.gxf4** [Stockfish: 38.Kxf4 h5 39.Bc7 Nd4 40.Ke3 Nc2+ 41.Kd2 Nb4 42.a3 Nc6 43.Kc3 Nxe5, etc...] **38...f6** (Terance: Just trying to break up the Pawns to make them weak and then pick them off.) **39.exf6 Kxf6** [Strongly threatening ...Kg6.] **40.Kf3 h5** (Terance: With this move White cannot move his King near my h and d Pawns, neither can his Bishop attack any of my Pawns on the White squares; so, I now can win this at my leisure.) **41.Bd2 Ke6** [D]



[And now ...a6 would win.] **42.Be1 Kd7** (Terance: Nd4 was the move to make White resign which I did a few moves later; h4 was even better as White can't stop (Text cont. next col.)

(Cont. from prev. col.) two passed Pawns.) [Stockfish: 42...h4 43.Bf2 d4 44.Ke4 h3 45.Bg1 Ng3+ 46.Kf3 d3 47.Ke3 Kf5, etc...] **43.Bf2 Kc6** [Aiming for ...Kb5.] **44.a4 a6 45.Bg1 Kd7 46.Bf2 Ke6 47.Be1 Nd4+ 48.Kg3 Kf5** [D]



[White Resigns!] [Weighted Error Value: White=0.63/Black=0.31] [Stockfish: 49.Bf2 Ne2+ 50.Kf3 Nxf4 51.Bh4 Ne6 52.Ke3 d4+ 53.Kd3 Kg4 54.Bf6 h4, etc...] **0-1** Copy and paste the link below into your browser:

<https://share.chess-base.com/SharedGames/game/?p=h6vbTWoz2HZhBZKWxENf5N2/Mu5p1LELS08sifJaHVtULzAp2rykC5K+aZOabxD>

Game from the NPCC 2022 Winter Robin Tournament Round: 6

Submitted by Terance with his comments (as edited) and selected Fritz/*Stockfish comments [shown thus].

White: Terance Hall, (1884)
Black: Eric Funk, (2045)
Date: 2/11/2022

*(Please copy and paste the HTML link at the end of this article into your browser to read the complete commentary, Stockfish comments, and to be able to play thru the moves.)

[A40: Unusual replies to 1 d4] **1.d4 Nc6 2.c4** (Terance: Here I prefer c4 over d5 and a later f4 chasing the Knight around which is preferred by the Stockfish engine.) **2...e5** (Terance: Striking immediately in the center.) **3.d5** (Terance: This is stronger than dxe5 which I played last time Eric played this.) **3...Nce7 4.e4 Ng6 5.a3** (Terance: Played to restrict Blacks option with his Bishop. I can hold off from development as the center is closed and having a little more space.) **5...Bc5 6.Nf3** (Terance: b4 was in more with the spirit with Be4 and Ra2.) **6...a5** [Against b4] **7.Nc3 Nf6 8.h3** [D] (p.10) (Text cont. next col.)

Position after 8.h3 (From p.9)

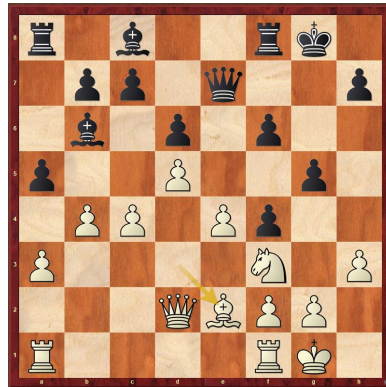


(Cont. from p.9) [Inhibits Ng4. The position is equal]. (Terance: I spent some time on this move as once d6 is played h3 becomes a target I on which I must keep watch, especially after castling with White's Bishop and Knight. You will see how this influences the whole game. Nonetheless it is the best move.) **8...0-0 9.Bd3 d6 10.0-0** (Terance: I knew Bc2 was better as now I am in a pin with the f2 Pawn.) **10...Qe7N** [10...Nh5 11.Ne2 h6 12.Qc2 Qf6 13.Nh2 Nh4 14.Nxf4 Nxf4 15.Bxf4 exf4, etc... Ris,B (2250)-Stojanov,S (2305) Belgrade 1993 0-1] **11.Ne2** (Terance: I knew I should not go backwards with my Knight as it did not feel right. I played it because I knew that Black wanted a Knight on f4, and I wanted to frustrate that play for Black. I should be more patient and play Bc2.) [Stockfish: 11.Bc2 h6 12.Bd2 Bd7 13.Rc1 Rfe8 14.Ba4 Bxa4 15.Qxa4 Rec8, etc...] **11...Nh5 12.Bg5** (Terance: Played to force f6, a weakening move and to keep Black's Queen out of play.) **12...f6 13.Bd2** (Terance: Played to threaten b4. Stockfish preferred Be3.) [13.Be3= was preferrable. Stockfish: 13...f5 14.Bxc5 dxc5 15.Re1 Nh4 16.Ng3 Nxf3+ 17.Qxf3 Nxf3 18.fxf3 f4, etc...] **13...Nhf4** [D]

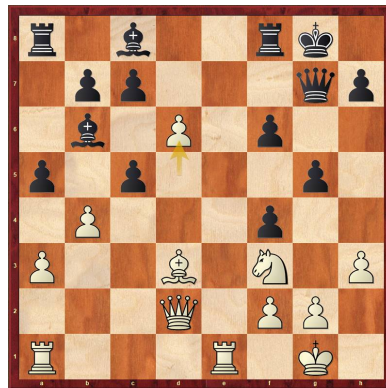


(Terance: Black was better, but now White is. Black needed to be patient also and played something like a4.) [13...a4=+] **14.Nxf4+= Nxf4 15.Bxf4 exf4 16.Qd2 g5 17.b4** (Text cont. next col.)

(Cont. from prev. col.) (Terance: Now I must play actively as g4 is a strong threat along with the Bishop on c5 pinning my f2 Pawn. Play on the side requires to hit in the center as we shall see.) **17...Bb6 18.Be2!?** [D]

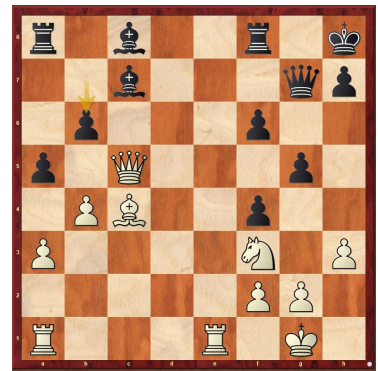


(Terance: This was played with a deep thought plan in hindering Bxh3 and guarding the Kingside. I wanted to play my Knight to d4. My candidate move was Rc1, but I didn't see an advantage at this time.) [18.Rfe1+=; Stockfish: 18.Rac1 Kh8 19.Be2 axb4 20.axb4 Qxe4 21.Qb2 Qe7 22.Nxg5 Rg8 23.Ne6 Bxe6 24.dxe6 Qxe6, etc...] **18...Qxe4?!** (Terance: Now White is clearly better. Taking the Pawn wastes time which now allows me a vicious attack.) [18...axb4= 19.axb4 Bd7] **19.Bd3** (Terance: Rfe1! was much stronger to play first..) [19.Rfe1!+- aiming for Bd3. 19...Qe7 20.Bf1 Stockfish: 20...Of7 21.Qc2 Ba7 22.c5 Qg7 23.Nd4 f5 24.Rad1 g4, etc...] **19...Qe7!= 20.Rfe1 Qg7 21.c5** (Terance: Now I sacrifice a second Pawn so that Black will block his own Black square Bishop so my f2 Pawn won't be pinned.) **21...dxc5 22.d6** [initiative] [D]



[White has some pressure.] (Terance: now I sac a third Pawn to attack Black's King and control the center.) **22...cxd6 23.Bc4+ Kh8** [...g4 is the strong threat.] **24.Qxd6** [Hoping for Re7]. (Terance: now I have pressure all over and Black has to play accurately.) **24...Bc7 25.Qxc5 b6** [D] (Next col.) (Text cont. next col.)

Position after 25...b6 (From prev. col.)



[25...Bd8!= remains equal.] **26.Qc6!+-** [White has strong compensation. White is better.] **26...Rb8 27.Re8!** [Threatens to win with Rxf8+.] **27...Bf5!** [D]



(Terance: Eric thought for quite a while and found the only move not to lose instantly. That is why I gave it a !.) **28.Rxf8+** [Weighted Error Value: White=0.13 (very precise) / Black=0.20 (precise)] (Terance: At this point I offered Eric a draw and he accepted. Yes, I should have played on, but I respected Eric's play.) [28.Rae1!+- Be5 29.Rxf8+ Rxf8 30.Nxe5 (30.Qxb6 Qc7+=) 30...fxe5 31.Qxb6 axb4 32.axb4] **1/2-1/2**

Copy and paste the link below into your browser:

<https://share.chess-base.com/SharedGames/game/?p=yosccq4YQoQ+piCgKkx8ISBng43Rz67b9ics0SBgMYr3j3kS4gccGU3kWx+bYUyBj>

Game from the NPCC 2022 Winter Robin Tournament Round: 6

Submitted by Joe with his comments and selected Fritz comments [shown thus].

White: William Parberry (1994)

Black: Joseph Mucerino (2154)

Date: 2/11/2022

* (Please copy and paste the HTML link at the end of this article into your browser to read the complete commentary and to be able to play thru the moves.)

(Text cont. p.11)

(Cont. from p.10) [B01: Scandinavian Defense] **1.e4 d5 [D]**



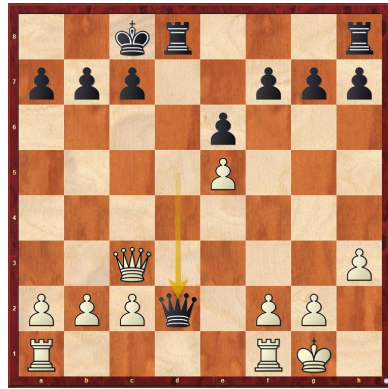
2.exd5 Nf6 3.d4 Bg4 4.Nf3 Qxd5 5.Be2 e6 6.Nc3N [D]

[6.c4 Qa5+ (6...Bb4+ 7.Nc3 Qa5 8.Bd2 c6 9.h3 Bxf3 10.Bxf3 Nbd7 11.a3 Bxc3 12.Bxc3 Qc7, etc... Nigmatov,O (2452)-Sadvovsky,A (2408) Tula 2018 1-0 (50); 6...Qd7 7.0-0 Nc6 8.Be3 0-0-0 9.Nc3 Bxf3 10.Bxf3 Nxd4 11.Bxd4 Qxd4 12.Qb3 Qb6, etc... Hoekendorf,H (2284)-Becker,W (2333) Germany 2006 0-1) 7.Nc3 c6 8.Qb3 Qb4 9.Qc2 Bxf3 10.gxf3 Nbd7 11.Be3 g6 12.0-0-0 Bg7 13.h4 h5 14.Ne4 0-0, etc... Nanu,C (2437)-Podinic,V (2367) Bucharest 2002 1-0 (42); 6.Bf4 c6 7.Nbd2 Be7 8.h3 Bh5 9.c4 Qd8 10.Qb3 Qc8 11.0-0-0 12.Rfe1 Rd8 13.Rad1 Nbd7, etc... Xheladini,M (2280)-Rogers,I (2618) Baden 1999 0-1 (55); 6.Be3 Be7 7.c4 Qd8 8.0-0 Nbd7 9.h3 Bh5 10.Nc3 0-0 11.a3 a5 12.c5 Nd5 13.Nxd5 exd5, etc...Vega Gutierrez,S (2278)-Vila Gazquez,X (2422) Benidorm 2008 ½-½ (119)] **6...Bb4 7.Bd2 [7.h3 with more complications. 7...Bf5 8.0-0 Qa5 9.Bd2 Nc6 10.a3] 7...Bxc3 8.Bxc3** (Joe - 8.bxc3 is not a bad choice either, and is probably better. [Better is 8.bxc3 Nc6 9.h3] **8...Nc6= 9.h3 Bh5 10.0-0 0-0-0 11.Ne5 [D]**

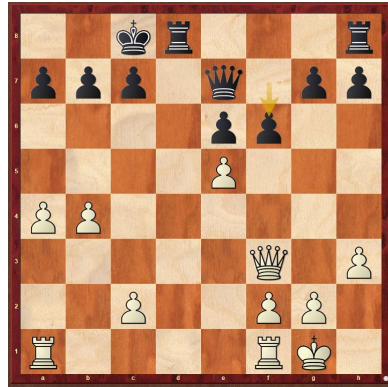


11...Bxe2 12.Qxe2 Nxe5 13.dxe5 Ne4 14.Qf3 Nxc3 15.Qxc3 Qd7 [D] (Next col.) (Joe - Black should double the Rooks instead.) **16.Qf3 Qd7 [16...Qd5=] 17.a4 [17.Rad1+= Qb5 18.Qxf7] 17...Qe7** (Text cont. next col.)

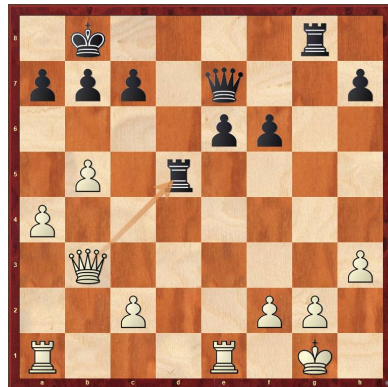
Position after 15...Qd2? (From prev. col.)



(Cont. from prev. col.) [17...Qc6=] **18.b4 [18.Rad1 looks sharper. 18...f5 19.exf6 gxf6 20.b4 Rxd1 21.Rxd1 Rd8 22.Rxd8+ Qxd8 23.Qe4] 18...f6? [D]**



(Joe - 18...Rd5 was the way to go.) [18...Rd5=] **19.Qe3!?** (Joe - White should keep storming with 19.a5.) [White should play 19.a5!+-] **19...Kb8+= 20.b5 Rd5 21.exf6 gxf6 22.Qb3!?** (Joe - White should challenge the file with 22.Rfd1.) [22.Rfd1+= Rhd8 23.Rxd5 Rxd5 24.c4] **22...Rg8 [22...Rhd8= deserves consideration.] 23.Rfe1 [D]**

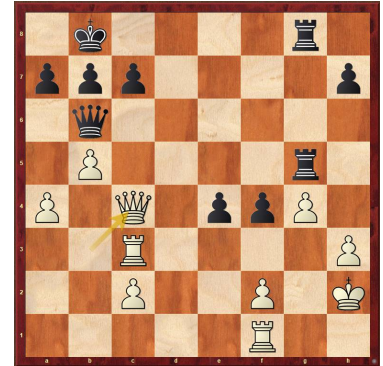


(Joe - Threatening 24.Qxd5.) And now Qxd5! would win.] **23...Rdg5 [23...Qd6=] 24.g3! Qc5 [24...Re8+=] 25.Re3+- e5 26.Rc3!?** (Joe - White should get his other Rook into the game with 26.Rd1.) [26.Rd1+=] **26...Qd4+= 27.Rf1!?** (Joe - Too passive. White should have played 27.Re1.) [27.Kg2+=] **27...f5?** (Text cont. next col.)

(Cont. from prev. col.) (Joe - A big mistake, Black should have played 27...e4 to prevent White's next move.) [27...e4=] **28.Rd3!+- Qc5?? [D]**

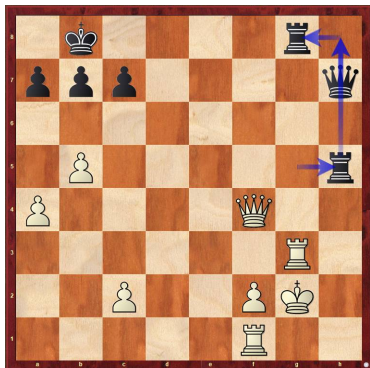


(Joe - This should lose. Relatively best was 28...Qe5, but that's still losing.) [28...Qe4+- keeps fighting. 29.Rfd1 Rc8] **29.Rc3??** (Joe - This lets Black off the hook. He should generate mating attacks with 29.Rfd1.) [29.Rfd1+- Rd8+ would kill now. 29...Rc8 30.Qe6] **29...Qb6 30.Kh2 f4 31.g4?** (Joe - This opens up White a bit too much. He should move his Queen to c4 or f7.) [31.Qd5= remains equal.] **31...e4?** (Joe - A miscalculation, losing the Pawn. I wanted to prevent White from playing 32.f3.) [31...h5+- 32.f3 Qf6] **32.Qc4!=[D]**

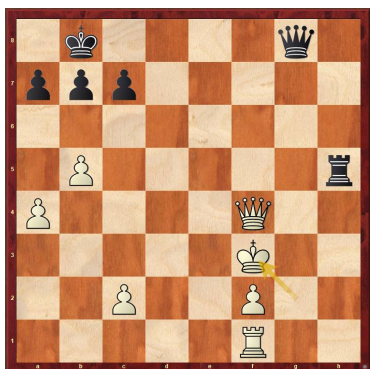


(Joe - Not only attacking the Pawn on e4, but putting pressure on c7.) **32...h5 [With initiative] [White is under pressure.] 33.Qxe4 hxg4 [Threatens to win with ...f3.] 34.Qxf4 gxh3** (Joe - The computer says this position is equal, 0.00.) [...Rg2+ is the strong threat.] **35.Rxh3??** (Joe - This is a losing move. White should leave the Pawn on h3 and use it to shield his King from checks.) [35.Rg3= and White stays safe. 35...Qc5 36.a5] **35...Qg6?** (Joe - White was threatening 36.Qxg5, and the text does threaten mate. But with 35...a6 or 35...a5, Black can forget about back rank mate threats.) [35...a5+- has better winning chances. Hoping for ...Qe6. 36.Rg3 Rh5+ 37.Kg2 Qe6] **36.Rg3+- [Aiming for Qxg5.] 36...Qh7+ 37.Kg2 Rh5 [D]** (p.12) **38.Rxg8+??** (Joe - That's the ballgame. After the game, (Text cont. p.12)

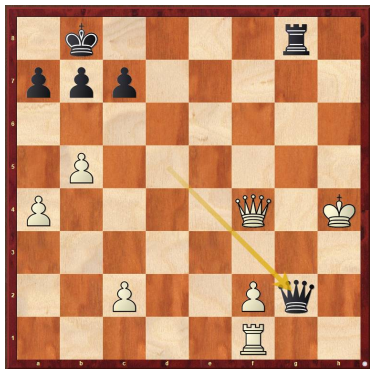
Position after 37...Rh5 (From p.11)



(Cont. from p.11) everyone was recommending 38.Rg1, and that is the best move.) [38.Rg1+- is more resistant.] 38...Qxg8++ 39.Kf3 [D]



39...Qd5+! 40.Kg4 [Intending Qf8+ and mate.] 40...Rh8 [Against Qf8+. (-> ...Qh5+)] 41.Kg3 Rg8+ 42.Kh4 Qg2 [D]



0-1

[Weighted Error Value: White=0.91/Black=0.24 (precise)] Copy and paste the link below into your browser:

<https://share.chess-base.com/SharedGames/game/?p=6C8IVMWT0BJDsDxGI0qHgE2Xa-deRyzbTF8mcQT24tV8QwPZabX-atSHZsDVO2Yb2j>

Game from the NPCC 2020 Winter Robin Tournament Round: 6

Submitted by Olin with selected Fritz comments [shown thus]. (Text cont. next col.)

(Cont. from prev. col.)

White: Olin Mastin (1500)
Black: Bernie Overly (1574)
Date: 1/21/2022

*(Please copy and paste the HTML link at the end of this article into your browser to read the complete commentary and to be able to play thru the moves.)

[A08: King's Indian Attack] 1.Nf3 d5 2.g3 Nf6 3.Bg2 e6 4.d3 c5 5.0-0 Nc6 6.Nbd2 Be7 7.Re1N [D]



7...e5 8.c4 Be6 [Black should play 8...0-0+] 9.b3 [Better is 9.Ng5] 9...h6 [Better is 9...d4] 10.Bb2 d4= 11.Nf1 Qc7 12.e3 0-0 13.Qe2 Rae8 [Better is 13...Rad8] 14.h4 [Better is 14.h3=+] 14...Bf5 15.a3 Bd6 16.N1h2 Bxd3 17.Qxd3 e4 18.Qd2 [D]



[Strongly threatening Nxd4!] 18...exf3 [18...Na5 keeps more tension. 19.Rad1 exf3 20.Nxf3 Ne4 21.Qd3 Nxf2 22.Kxf2 Bxg3+ 23.Kf1 Bxe1 24.Rxe1 dxe3 25.Rxe3 Nc6] 19.Bxf3 Ne5 [D]



20.exd4+= Nxf3+ 21.Nxf3 cxd4 22.Bxd4 Ng4 [Better is 22...Ne4 23.Qc2 f5] 23.Rxe8+ Rxe8 24.Re1 (Text cont. next col.)

(Cont. from prev. col.) [24.Bxa7?! b6 25.b4 Be5 26.Bxb6 (26.Nxe5 Nxe5 27.Qe3 Re6+) 26...Qxb6=] 24...Rxe1+ 25.Qxe1 Kf8 [Prevents Qe8+.] [25...Bxa3+- was called for. 26.Qe8+ (26.Bxa7 b6+) 26...Bf8] 26.Qe4+- [26.Bxa7?! Bxa3 27.Bd4 Qc6] 26...h5 [26...Nf6 was necessary. 27.Bxf6 gxf6] 27.Qh7 [27.Bxa7 Nf6 28.Qe3 Ng4+-] 27...g6 28.Qh8+? [D]



[28.Ng5+- and the rest is easy. 28...b6 29.c5 bxc5 30.Bxc5!] 28...Ke7+- 29.Bg7 29...Bxg3? 30.Qf8+- [D]



[White is clearly winning.] 30...Ke6 31.Nd4+ [Better is 31.Qe8+ Kf5 32.Nd4+ Kf4 33.Ne2+ Kf5 34.Nxg3+ Qxg3+ 35.fxg3] 31...Kd7 [32.Qxf7+ Kc8 33.Qe8+ [D]



1-0

[Weighted Error Value: White=0.56/Black=0.67] Copy and paste the link below into your browser: <https://share.chess-base.com/SharedGames/game/?p=7PpR0YxPCIUI-WBBZrvbF0dQA7ZQMMM+O2hhUAHBI5Tzc7/dNgcA0V5IMyAtYVMqj>

This concludes this issue. More games in next issue.