

~ En Passant ~

Newsletter of the North Penn Chess Club, Lansdale, PA – Fall 2020, Part 1

E. Olin Mastin, Editor

North Penn Chess Club
500 West Main Street
Lansdale, PA 19446

www.northpennchessclub.org

(215) 699-8418 donfunk@msn.com

This issue features games from NPCC Membership Drive tournament and other games.

The purpose of these newsletters is to include as many games as possible by NPCC players irregardless of the strength of the participants.

Thanks to all for submitting games!

Game from the NPCC 2020 Membership Drive Tournament

Round: 1

Submitted by Joe with his comments and selected Fritz comments [shown thus].

White: Joseph Mucerino (2108)

Black: Jimmy Christensen (1681)

Date: 11/9/2020

*(Please copy and paste the HTML link at the end of this article into your browser to read the complete commentary and to be able to play thru the moves.)

[A40: Unusual replies to 1 d4] **1.d4 b6**

2.e4 e6 3.c4?! [D] (Next col.) (Joe - It's probably better to start developing some pieces.)

3...Bb7 4.Bd3 f5? (Joe - I don't know the theory behind this move, so I let my computer run longer than usual, and it doesn't like it, preferring normal developing moves.) **5.exf5 Bxg2** [5...exf5+- 6.Nf3 (6.Bxf5 Nf6+-) 6...Bb4+ 7.Kf1 Bxf3 8.Qxf3 Nc6] (Text cont. next col.)

Position after Position after 3.c4?!

(From prev. col.)



(Cont. from prev. col.) **6.Qh5+- g6**

(Joe - Of course not 6...Ke7 7.Qg5+ wins the Bishop.)

7.fxg6 Nf6?? [D]



(Joe - This looks logical, but it appears to be the losing move. Black must play 7...Bg7. One computer line goes 8.gxh7+ Kf8 9.Bg5 ((please note that 9.hxg8=Q+ is not good)) Nf6 10.Qh4 Bxh1 11.Ne2 Nc6 12.Nd2 Kf7 13.O-O-O and White has a large advantage.)

(Text cont. next col.)

(Cont. from prev. col.) [7...Bg7+- 8.gxh7+ Kf8] **8.g7+!** [White has a decisive advantage.] **8...Nxb5 9.gxh8Q Nf6 10.Bh6?!** (Joe - I calculated that this would be winning, but more accurate is 10.Nf3. Capturing the Rook is taboo because of 11.Bg5 Bxf3 12.Bxf6 Qc8 13.Qxh7 with a forced mate.) [Much less strong is 10.Bg5 Kf7+-; Better is 10.Nf3 Strongly threatening Bg5. 10...Bxf3 11.Rg1 (11.Bg5 Kf7+=)] **10...Kf7 [D]**



[And now ...Bb4+ would win.] (Joe - Threatening 11...Bb4+.) **11.Qxf8+ Qxf8 12.Bxf8 Kxf8 13.Nd2 Nc6 14.Ne2 [D]** (p.2) [Rg1 is the strong threat.] [And not 14.d5 Ne5=] **14...Bxh1 15.f3** (Joe - Trapping the Bishop. If 15...Bg2 16.Nf4.) **15...Nb4 16.Bb1 Ke7 17.Kf2 Rg8** [With the idea ...Rg2+.] **18.Ng3 h5N [D]** (p.2) [Black hopes to continue with ...Bg2.] [18...Bxf3 19.Kxf3 Rf8 20.Be4 Nxe4+ 21.Kxe4 d5+ 22.cxd5 exd5+ 23.Ke5 c6, etc... Jakobsen,P (Text cont. p.2)]

October 2020 Announcement:
NPCC is open on a very limited basis.
Notifications will be sent out via email as to when tournaments are scheduled.

Position after Position after 14.Ne2
(From p.1)



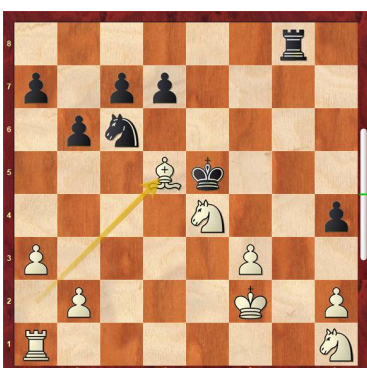
Position after Position after 18...h5N
(From p.1)



(Cont. from p.1) (2330)-Jepsen,T (2215)
Denmark 1991 0-1 (39)] 19.Nxh1 h4
20.a3 Nc6 21.d5 exd5 22.cxd5 Nxd5
23.Ba2 [D]



23...Kd6? (Joe - Black must protect the
Knight with 23...Rg5.) [23...Rg5 24.Re1+
Kd8] 24.Ne4+ Ke5 25.Bxd5 [D]



(Joe - Of course if 25...Kxd5 26.Nf6+.) [Accuracy:
White = 100%, Black = 48%.] 1-0
(Text cont. next col.)

(Cont. from prev. col.) Copy and paste
the link below into your browser:

<https://share.chess-base.com/SharedGames/game/?p=UmGrstbhHqTj1TNzeZZej9niFCBB-mUuZ7Kh6L9NXbGWTqNc-MgpMWeH189CuwJhR>

Game from the NPCC 2020 Membership Drive Tournament

Round: 2

Submitted by Joe with his comments and
selected Fritz comments [shown thus].

White: Dennis Baluk (1892)

Black: Joseph Mucerino (2108)

Date: 9/18/2020

*(Please copy and paste the HTML link at
the end of this article into your browser to
read the complete commentary and to be
able to play thru the moves.)

[A06: Réti Opening: 1 Nf3 d5] 1.d3 (Joe -
I've played Dennis a zillion times, so he de-
cided to try something different. This
move allows Black to equalize instantly,
but it does get us out of book, although it
can also transpose into other openings.)

1...d5 2.Nf3 c5 3.Nbd2 Nc6 4.e4 d4
[4...e5 5.g3 d4 6.Nc4 Qc7 7.a4 b6 8.Bg2
Nge7 9.0-0 Ng6 10.Ne1 Be7 11.h4 h5, etc...
Michna,M (2366)-Ovod,E (2419) Germany
2010 1-0 (39)] 5.Be2 [D]



(Joe - I though fianchettoing the Bishop
would have been better, putting it on the
long diagonal.) [5.c3 g6 6.cxd4 cxd4 7.Qb3
e5 8.Nc4 f6 9.Bd2 Rb8 10.a4 Be6 11.Be2
Nh6 12.0-0 Nf7 13.Ne1 Be7 14.f4 0-0 15.f5
gxf5, etc... Piskur,M (2295)-Bilobrk,F (2384)
Zadar 2014 0-1 (55)] 5...e5 6.0-0 (Joe - I
think 6.Nc4, preventing Black's next move
(unless he wants to give up the Bishop)) is
better.) 6...Bd6 7.Re1N [7.c3 Nge7
8.cxd4 cxd4 9.Nc4 Bc7 10.Bd2 b5 11.Na3
a6 12.Rc1 0-0 13.Nh4 Be6 14.Qc2 Rc8,
etc... Janoschka,A (2220)-Wendt,R (2290)
Germany 1995 1-0 (54); 7.Ne1 Nf6 8.Nc4
Bc7 9.a4 Be6 10.Bg5 h6 11.Bxf6 Qxf6 (Text
cont. next col.)

(Cont. from prev. col.) 12.Bg4 Bxc4
13.dxc4 h5 14.Bh3 g5 15.Bf5 Ne7, etc...
Kvatadze,D (1918)-Wilson,V (2087) War-
ren 2002 0-1 (48); 7.a4 Nge7 8.Nc4 0-0
9.Ne1 Bc7 10.Bg4 a6 11.Bxc8 Rxc8 12.g3
Ng6 13.Ng2 Rb8, etc... Chu,S (2095)-
Movsisian,N (2145) Zagan 1997 0-1 (52)]
7...Nf6 8.Nc4 [Black is slightly better.]
8...Bc7 9.a4 [D]



(Joe - Preventing ...b5 at some point, kick-
ing the Knight.) 9...Be6 (Joe - Threaten-
ing to win a Pawn with 10...Bxc4 and
11...Nxe4.) 10.b3 h6 (Joe - I really did
not like playing this move, because I
wanted to play ...f5 after castling and that
would leave the g6 square weak. But if I
castled now, 11.Bg5 would be an annoying
pin.) 11.h3 0-0 12.Nh2 Nd7?! [D]



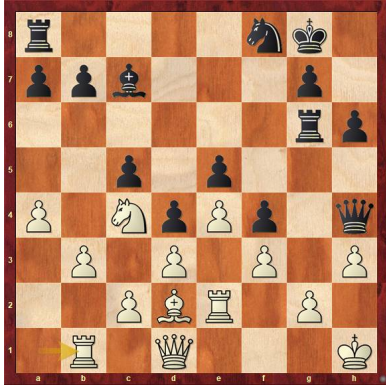
(Joe - Trying to get ...f5 in. The computer
says that this loses most of Black's ad-
vantage. It prefers 12...a6 followed by
13...b5.) 13.Bg4 Qe7 14.Bxe6 Qxe6
15.Nf1 f5 16.Ng3 f4 17.Nf5 Ne7
18.Nxe7+ Qxe7 19.f3?! [D]



(Text cont. p.3)

(Cont. from p.2) (Joe - A bit committal. Better is 19.Qf3, 19.Qg4, or 19.Qh5.)

19...Rf6 20.Bd2 Rg6 21.Re2 Qh4 22.Kh1 Nf8 23.Rb1 [D]



(Joe - If White wanted to play b4, he should have done so right away. Now Black locks up the position.) 23...a5 24.Qe1 Qd8 25.Qf2 Ne6 26.Be1 b6 27.Qf1 Qd7 28.Bh4 Rf8 29.Kg1 Rf7 [D]



30.Kh1 Nf8 31.Qe1 Qe6 32.Qd2 Rd7 33.Rg1 Bd8 34.Bxd8 Rxd8 35.Nxa5?? [D]



(Joe - Dennis was in time pressure and probably panicked. White? Black? has a space advantage, White is not that bad, and the computer says White is only down about a third of a Pawn.) [35.Qe1=+] 35...bxa5++ 36.Qxa5 Qb6 37.Qd2 Ra8 38.Ra1 Qa5 39.Qxa5 Rxa5 40.Ree1 Rb6 41.Rec1 Ne6 [D] (Next col.) 42.Ra3 Kf7 43.Kg1 Ke7 44.Kf2 Kd6 45.Ke2 Rb7 46.h4 Rf7 47.Rb1 Rfa7 48.Kd2 Ke7 49.c3? [D] (Next col.) (Joe - This gives the Knight a nice square.) (Text cont. next col.)

Position after Position after 41...Ne6 (From prev. col.)



Position after 49.c3? (From prev. col.)



(Cont. from prev. col.) [49.h5 keeps fighting.] 49...dxc3+ 50.Kxc3 Nd4 51.Ra2 Ke6 52.Rab2 Rb7 53.Ra2 Rb4 54.Rab2 Ra8 55.Ra1 Rab8 [D]

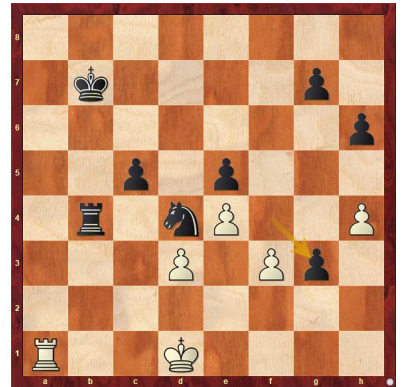


56.Rab1 [Better is 56.Ra3] 56...Kd6 57.a5 Kc6 58.a6 Kb6 59.Ra1 Ra8 60.a7 Rxa7 61.Rxa7 Kxa7 [Endgame KRN-KR] 62.Ra2+ Kb7 63.Ra5 [Better is 63.h5] 63...Nxb3 64.Ra3 Nd4 [D]



(Text cont. next col.)

(Cont. From prev. col.) [Strongly threatening ...Nb5+.] 65.Ra5 Ne6 66.Ra1 Nc7 67.Ra5 Kb6 68.Ra1 Nb5+ 69.Kc2 Kb7 70.g3 Nd4+ 71.Kd1 fxxg3 [D]



[Accuracy: White = 56%, Black = 76%.] 0-1

Copy and paste the link below into your browser:

<https://share.chess-base.com/SharedGames/game/?p=MPqz mwKdddQgaD-pUk9bDQWFCiBhrv71jp4zeg5gXPqZwPT9 wtbgqNeb/znWITid2>

Game from the NPCC 2020 Membership Drive Tournament

Round: 3

Submitted by Joe with his comments and selected Fritz comments [shown thus].

White: Joseph Mucerino (2108)

Black: Eric Funk (2078)

Date: 9/25/2020

*(Please copy and paste the HTML link at the end of this article into your browser to read the complete commentary and to be able to play thru the moves.)

[D04: Colle System] 1.d4 Nf6 2.Nf3 c5 3.e3 d5 4.Nbd2 Nbd7 5.b3 (Joe - Just a little something I came up with to vary the treatment.) 5...Ne4N [D]



(Joe - Watch out! 6...Nc3 would win the Queen!) (Text cont. p.4)

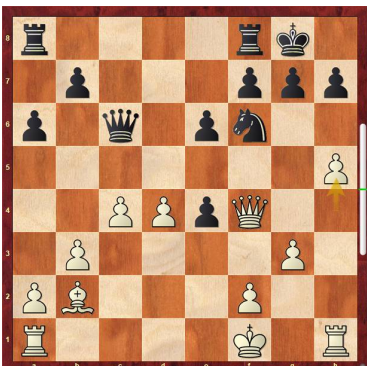
(Cont. from p.3) [5...e6= 6.Bb2 Be7 7.Ne5 Nxe5 8.dxe5 Nd7 9.c4 0-0 10.Bd3 Qc7 11.f4 dxc4 12.bxc4 Rd8, etc... Bellon Lopez,J (2399)-Rydstrom,T (2185) Norrkoeping 2014 1-0 (58): 5...g6 6.Bd3 Bg7 7.Bb2 0-0 (7...b6 8.0-0 9.Qe2 Bb7 10.c4 Re8 11.Rac1 Nh5 12.cxd5 Bxd5, etc... Fenoglio,V-Palau,L Buenos Aires 1935 ½-½ (71)) 8.0-0 e5 9.Nxe5 Nxe5 10.dxe5 Ng4 11.Nf3 Re8 12.Bb5 Bd7 13.Bxd7 Qxd7, etc... Brown,S-Berry,N (2230) Hawick 2001 0-1 (65)] **6.Nxe4+= dxe4 7.Nd2 cxd4 8.exd4** [White is slightly better.] **8...Nf6 9.Bb2 a6 10.g3 Bg4** [D]



11.Be2? (Joe - I was not happy around this point. However, the computer found a surprising move to keep the advantage: 11.Qc1. This allows white to fianchetto his bishop and castle.) [11.Qc1+= might be stronger.] **11...Bh3= 12.c4 e6 13.Bf1 Bxf1 14.Kxf1 Bb4 15.Qe2** [D]



15...Bxd2! 16.Qxd2 0-0 17.Qf4 (Joe - With a kingside attack on my mind, as well as putting pressure on the Pawn on e4, so the Knight can't move.) **17...Qd7 18.h4 Qc6 19.h5** [D]



(Text cont. next col.)

(Cont. from prev. col.) [h6 is the strong threat.] **19...h6** (Joe - 19...e3 was not much of a threat because White had 20.Rh4.) **20.Rd1** (Joe - I could not decide between this or 20.Re1, but I believe that this is a shade stronger.) **20...Nd7??** (Joe - I think that this is the game losing move, and I will explain it in my next note.) [20...Rfd8= and Black has nothing to worry.] **21.d5+- exd5** [D]



22.Rxd5 (Joe - The problem with 20...Nd7 is that Black cannot move a Rook onto the d-file, and because of that, White will get Rd6 in.) [White should try 22.Bxg7! Kxg7 23.Rxd5] **22...e3** (Joe - Preventing 23.Rd6.) [22...f6+-] **23.Rh4** [With attack] (Joe - White can play 23.Bxg7 Kxg7 24.Rh4 Rfe8 25.Qg4+ Kf8 26.Qxd7, but I did not want to trade Queens.) [White has strong attack.] [And not 23.Qxe3 Nb6+-] **23...e2+ 24.Ke1** (Joe - The computer says you can capture the pawn, but I did not see the need to expose my king to checks.) **24...f5?** [D]



(Joe - The ugly 24...f6 was the best defense.) [24...f6+-] **25.Rd6??** (Joe - I had the right idea, but the wrong move order. White must play 25.Bxg7 first.) [White must play 25.Bxg7!+- Kxg7 26.Rd6 Qxd6 27.Qxd6] **25...Qc8??** [D] (Next col.) (Joe - Black missed his change. He must play 25...Qg2, and he's actually a bit better now! One line goes 25...Qg2 (Text cont. next col.)

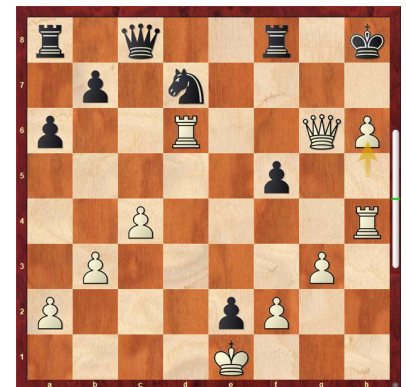
Position after 25...Qc8?? (From prev. col.)



(Cont. from prev. col.) 26.Kxe2 Rae8+ 27.Kd3 Qf1+ 28.Kc2 Re2+ 29.Rd2 Rfe8 30.Bc3 Rxd2+ 31.Bxd2 Qa1 32.Qxf5 Qxa2+ 33.Kc3.) [25...Qg2= 26.Kxe2 Rae8+ 27.Kd3 Qf1+ 28.Kc3 Nc5] **26.Bxg7! Kxg7** [D]

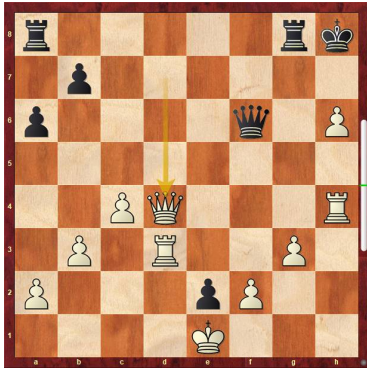


27.Qxh6+ [Better is 27.Rg4+! Kf7 (27...fxg4 28.Rg6+) 28.Qxf5+ Ke8 29.Qe6+ Kd8 30.Rg7 Kc7 31.Rdxd7+ Kb8 32.Rxb7+ Qxb7 33.Qd6+ Ka7 34.Qc5+ Kb8 35.Qxf8+ Ka7 36.Qc5+ Kb8 37.Rg8+ Qc8 38.Qb6#] **27...Kg8 28.Qg6+?!** (Joe - 28.Rg6+ and 28.Qg5+ are both forced mates, according to the computer.) [Better is 28.Rg6+ Kf7 29.Rd4 Ke8 30.Re6+ Kd8 31.Qxf8+ Kc7 32.Qd6+ Kd8 33.Qe5 Qc7 34.Qh8#] **28...Kh8 29.h6?** [D]



(Joe - This is still winning, but stronger was 29.Rhd4.) (Text cont.p.5)

(Cont. from p.4) [Better is 29.Rhd4 Rf7 30.Qxf7 Qf8 31.Rxd7 Qxf7 32.Rxf7 Rg8 33.Rdd7 Rg5 34.h6] **29...Rg8 30.Qxf5 Qf8** [30...Qc5 was necessary. 31.Qxd7 Rae8] **31.Qxd7** [White is clearly winning.] **31...Qf3** [And now ...Raf8 would win.] **32.Rd3 Qf6** [White must now prevent ...Rad8.] **33.Qd4 [D]**



[Accuracy: White = 61%, Black = 52%.] **1-0**
Copy and paste the link below into your browser:

<https://share.chess-base.com/SharedGames/game/?p=IclIMoDNBbr+cloPjc8LfAoe3qHCCK-brzIM5K1JE8I22BJKXtZcwzkgxiTKcKJ7h>

Game from the NPCC 2020 Membership Drive Tournament

Round: 4

Submitted by Joe with his comments and selected Fritz comments [shown thus].

White: Kevin Li (1942)

Black: Joseph Mucerino (2069)

Date: 10/2/2020

*(Please copy and paste the HTML link at the end of this article into your browser to read the complete commentary and to be able to play thru the moves.)

[B01: Scandinavian Defense] (Joe - I played Li once before, at last year's New Jersey Open. On that occasion I was white and won. Since I was Black for this game, I asked some of my friends about him, and they said that he was very aggressive, so I kept that in mind.) **1.e4 d5 2.exd5 Nf6 3.d4 Bg4 4.Be2 [D]**



cont. next col.)

(Text

(Cont. from prev. col.) **4...Bxe2 5.Nxe2?! (Joe - 5.Qxe2 is better.) 5...Qxd5 6.0-0 Nc6 7.Be3 0-0-0 8.Nd2!? [D]**



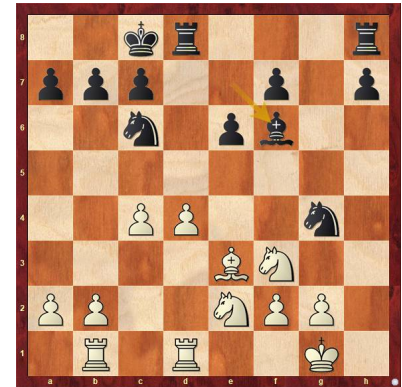
(Joe - A very odd looking move that I thought was wrong at the time, but the computer says that it's best.) **8...e6** (Joe - I was afraid of 9.c4, 10.d5 and 11.Qa4, so I tried to stop that.) **9.c3** (Joe - I was surprised by this move. It's solid, but I still think 9.c4 is better.) [White is slightly better.] [9.c4 Qh5 10.Nf3 (10.a3 Bd6 11.Nf3 g5 12.Ng3 Bxg3 13.hxg3 g4 14.Nh4 Rd7 15.b4 Rhd8, etc... Nemeth,G (2107)-Murko,D (1889) Gyor 2014 1-0 (34)) 10...Bd6 11.c5 Be7 12.b4 e5 13.Qa4 Ng4 14.Ng3 Qg6 15.Rfd1 exd4, etc... Dissanayake,P (2112)-Smerdon,D (2427) Negombo 2003 0-1 (55)] **9...Bd6 10.h3N** [10.b4 g5 11.Ng3 h5 12.c4 1-0 (12) Allagian-nis,I-Pavlogianni,D Glyfada 2000] **10...g5 11.c4** [11.b4 seems wilder. 11...Qf5 12.Nc4 Kb8 13.Nxd6 Rxd6 14.c4] **11...Qf5 12.Qb1 [D]**



12...Qxb1 (Joe - Going into this round, I had a half point lead over the field. With that in mind, it was more important to not lose that it was to win, so I was happy to trade Queens.)

13.Raxb1 Be7 (Joe - If White captures on g5, I can capture on d4.) **14.Rfd1 g4 15.hxg4 Nxg4 16.Nf3 Bf6 [D]** (Next col.) (Joe - Capturing the Bishop on e3 would actually strengthen White's center.) **17.b4 h5 18.Bg5 Rhg8 19.Bxf6 Nxf6 20.a3** (Joe - White never (Text cont. next col.)

Position after 16...Bf6 (From prev. col.)



(Cont. from prev. col.) played b5, which surprised me.) **20...Rg7 21.Rb3 Rdg8 22.Ne1 Ne7 23.Nf4? [D]**



(Joe - I was expecting 23.Rg3, trading off a pair of Rooks, but the computer suggests 23.Rf3.) [23.Rf3= Ne4 24.Rh3] **23...Rg4** [With initiative] [Black has good play.] **24.Nh3?** (Joe - White should have played 24.Rf3 or 24.Ne2. With a White Knight on e1 and h3, Black has to be better.) **24...Nf5 25.Rbd3 Nh4?** (Joe - Looks good, but 25...Nd6 or 25...Nd7 were better.) [25...Nd7+ 26.f3 Rh4] **26.g3? [D]**



(Joe - The best defense was 26.f3 Rg3 27.Nf4.) [26.f3+= Rg3 27.Nf4] **26...Nf5+ 27.Kf1 h4 28.gxh4 Rxh4 29.Ng2 Re4** (Joe - Note that 30.f3 does not trap the Rook because of 30...Ng3+ and 31...Re2) [Black should play 29...Rhh8 30.Re1 Rg4] **30.Ne3?? [D]** (p.6) (Joe - White begins to drop material.) (Text cont. p.6)

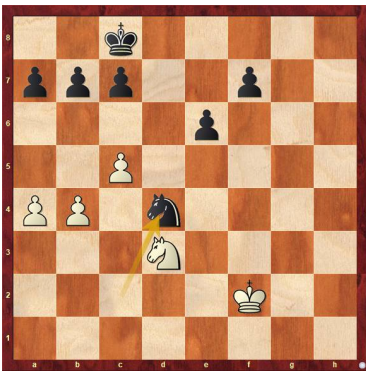
(Position after 30.Ne3?? (From p.5)



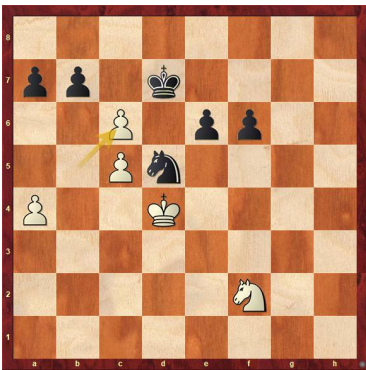
(Cont. from p.5) [30.f3+ Ng3+ 31.Kg1] 30...Nxe3+!-+ 31.fxe3 Rg3 32.Nf2 Rxe3 33.Rxe3 Rxe3 [Endgame KRN-KRN] 34.Rd3 [D]



34...Ng4! 35.c5 [35.Nxg4 Rxd3] 35...Rxd3 36.Nxd3 [KN-KN] 36...Ne3+ 37.Kf2 Nc2 38.a4 Nxd4 [D]

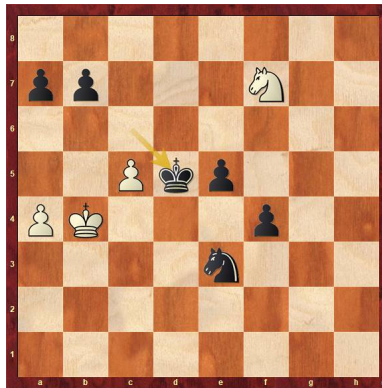


(Joe - With two connected passed pawns for black, White has basically no chance to draw the game.) 39.Ke3 Nc6 40.b5 Ne7 41.Ne5 f6 42.Ng4 Nd5+ 43.Kd4 Kd7 44.Nf2 c6 45.bxc6+ [D]



[45.Kd3 was called for.] 45...Kxc6 (Text cont. next col.)

(Cont. from prev. col.) [Black is clearly winning.] 46.Ne4 e5+ 47.Kc4 f5 48.Nd6 f4 49.Nf7 Ne3+ 50.Kb4 Kd5 [D]



[Accuracy: White = 44%, Black = 85%] 0-1

Copy and paste the link below into your browser:

<https://share.chess-base.com/SharedGames/game/?p=3N6FboPicF2QdLY+5bO6udecONKJ9ocl-qUa938nXlvNq2vrNHFisH52ifccOhtRy>

Game from the NPCC 2020 Membership Drive Tournament

Round: 5

Submitted by Joe with his comments and selected Fritz comments [shown thus].

White: Joseph Mucerino (2069)

Black: Jonathan Xu (1999)

Date: 10/9/2020

*(Please copy and paste the HTML link at the end of this article into your browser to read the complete commentary and to be able to play thru the moves.)

[D05: Colle System with ...e6] (Joe - I got lucky in this game because my opponent fell into some home preparation.) 1.d4 d5 2.Nf3 e6 3.e3 Nf6 4.Nbd2 c5 5.c3 Nc6 6.Bd3 Bd6 7.0-0 0-0 [D]



8.dxc5 Bxc5 9.e4 Qc7 10.Qe2 [10.Qb3+= feels stronger.] 10...b6 [10...Ne5=] 11.e5+ Ng4 [D] (Next col.) (Text cont. next col.)

(Position after 11...Ng4 (From prev. col.)



(Cont. from prev. col.) (Joe - This is stronger than retreating to d7.) [11...Nd7=] 12.Bxh7+ Kxh7 [Black is better.] 13.Ng5+ Kg8 14.Qxg4 [D]



[And now Qh5 would win.] 14...Qxe5 15.Qh5 (Joe - It's very important to put the Queen here, because, as we will see in the future, White's other Knight will come to h4. Also, in some variations, White will want to play Rd1, and it needs to be protected by the Queen on h5.) [15.Ndf3 Qf6 16.Qh5 (16.Qh3 Qh6 17.Nh4 e5 18.Qg3 Qh5 19.Nh3 Qg4, etc... Igaz,P (2067)-Toth,T (1998) Hungary 2015 ½-½ (46)) 16...Qh6 17.Qxh6 gxh6 18.Nh3 Kh7 19.Nf4 Ba6 20.Re1 Rac8 21.Ne5 Nxe5, etc... 0-1 (28) Parameswaran,T (2390)-Zarnicki,P (2540) Yerevan 1996] 15...Qf5 (Joe - Black's Queen must defend against the mate on h7. So White is going to try to force the Queen off the b1-h7 diagonal.) 16.Ndf3 [16.b4= Be7 17.Ndf3] 16...Ne7??N [D]



(Text cont. p. 7)

(Cont. from p.6) (Joe - Black is going to lose the Queen after this. He had to go for 16...Ba6 or 16...Be7.) [16...Ba6+ and life is bright. 17.Rd1 Bd3 18.g4 Qg6 19.Qxg6 Bxg6 20.h4 Rfe8 21.h5 Bc2 22.Rd2 Be4 23.Nxe4 dxe4, etc... Fenollar Jorda,M (2358)-Gonzalez Garcia,J (2522) Barbera del Valles 2011 0-1 (45); 16...Qg6 17.Qxg6 fvg6 18.Be3 e5 19.Rfd1 e4 20.Nd4 Nxd4, etc... Boguszlavskij,J (2320)-Ivan,Z (2235) Hungary 1996 ½-½ (73)] **17.Nh4 Qc2** [...f6 is the strong threat.] **18.Be3**[With attack] [White mounts an attack.] **18...Bxe3??** [18...Ba6+=] **19.fxe3+-** [Intending Nf5! and mate.] **19...f6** [D]



20.Rf2? (Joe - White missed the great move 20.Nf5!! threatening mate on h7. If 20...fxg5 21.Nxe7 is also mate.) [20.Nf5! Qxf5 (20...exf5 21.Qh7#) 21.Rxf5 fvg5 22.Rxf8+ Kxf8 23.Rf1+ Nf5 24.g4] **20...Qxf2+** **21.Kxf2 fvg5+** **22.Nf3 Rf6?** [D]

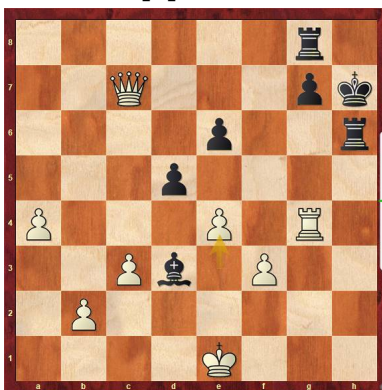


(Joe - This ultimately loses a Pawn and White gets great pressure on g7.) [22...Ba6 is a better defense. 23.Kg1 Be2 24.Qxg5 Nc6] **23.Qe8+** [White is clearly winning.] **23...Kh7** [Better is 23...Rf8 24.Qxe7 g4] **24.Qxe7 g4 25.Rg1 Ba6 26.Ke1 gxf3 27.gxf3 Rg8 28.Rg3** [D] (Next col.) (Joe - I could have won another Pawn with 28.Rxg7+ and 29.Qxf6, but I wanted to keep the pressure on g7 to tie Black's pieces down.) **28...Rh6 29.Rg4 Bc8 30.Qxa7** (Joe - I was afraid that if Black was able to play ...a6 and ...b5, it may have (Text cont. next col.)

(Position after 28.Rg3 (From prev. col.)



(Cont. from prev. col.) been difficult to break him down.) **30...Rhx2 31.Qxb6 Rh6 32.Qc7 Ba6 33.a4 Bd3 34.e4** [D]



(Joe - Disrupting the coordination of Black's pieces.) **34...Kh8 35.b4 Rh5 36.b5 g6 37.b6 dxe4 38.fxe4 Ba6 39.b7 Bxb7 40.Qxb7 Rf8 41.Qe7** [D]



[Accuracy: White = 65%, Black = 29%.] **1-0**

Copy and paste the link below into your browser:

<https://share.chess-base.com/SharedGames/game/?p=F0hC KALbBkrtotNraZaGVj1/jUHwn-CEullv3GxJOajBCxV4OgRjTCSWnsKxPt/ZP>

Game from Let's Play! Chess.com Tournament (Two NPCC Players)

Submitted by Olin with selected Fritz (Text cont. next col.)

(Cont. from prev. col.) comments [shown thus].

White: BOverly, Bernie Overly (1507)

Black: omast2, Olin Mastin (1480)

Date: 1/8/2020

[B72: Sicilian Dragon: 6 Be3, lines with h3+Bc4 and sidelines] **1.e4 c5 2.Nf3 Nc6 3.d4 cxd4 4.Nxd4 g6 5.Nc3 d6 6.Be3 Bg7 7.f3 Nf6 8.Qd2 0-0 9.h4 h5 10.Be2 Kh7** [D]



[10...d5=; 10...Nxd4 11.Bxd4 Qa5 12.0-0 e5 13.Be3 Be6 14.Kb1 Rfc8 15.Nd5 Qxd2, etc... Babic,D (2390)-Gufeld,E (2510) Belgrade 1988 0-1 (38)] **11.0-0 a6N** [Better is 11...Kg8; 11...Rh8 12.Rdg1 Kg8 13.g4 Bd7 14.Kb1 a6 15.Nd5 b5 16.Nxf6+ Bxf6 17.gxh5 Rxh5, etc... Hetmanski,W (2000)-Urban,J (1800) Ciechocinek 2002 1-0 (43)] **12.Rdg1 Nxd4+=** [White is slightly better.] **13.Bxd4** [Don't play 13.Qxd4 Ng4+=] **13...Qa5 14.g4!+- Be6? 15.Kb1?** [D]



[Only move: 15.gxh5+- Bxa2 16.hxg6+ fxg6 17.h5!] **15...b5?** [15...Bxa2!+- 16.Kc1 Be6] **16.g5?** [16.gxh5+- and life is bright. 16...Bxa2+ 17.Kc1] **16...Bxa2!+- 17.Kc1 Nd7 18.Bxg7 Kxg7 19.Qd4+ Kg8** [Better is 19...Kh7 20.Kd2 Be6] **20.Kd2** [D] (p.8) [Ra1 is the strong threat.] **20...Bc4! 21.Ra1** [21.Bxc4= bxc4 22.Ra1] **21...Qb6 22.Qe3** [22.Qxb6+= Nxb6 23.Bd3] **22...Qxe3+ 23.Kxe3 Bxe2 24.Nxe2 Rfc8 25.c3 Nb6** (Text cont. p.8)

Position after 20.Kd2 (From p.7)



(Cont. from p.7) 26.b3 a5 27.Rhb1 Kg7 28.Kd3 [Better is 28.f4] 28...Nd7 [D]

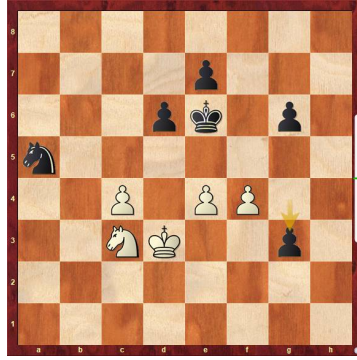


[Better is 28...e5! 29.f4 Nd7] 29.f4 [29.Nd4+ is a better defense.] 29...Nc5++ 30.Ke3 f6 31.Nd4 b4+ 32.c4? [32.cxb4+= axb4 33.Rxa8 Rxa8 34.gxf6+ Kxf6 35.Nc2] 32...Rcb8? [32...fxg5++ has better winning chances. 33.hxg5 e5] 33.Nc6 Rb7 34.Rxa5? [34.f5+] 34...Rxa5++ 35.Nxa5++ [Endgame KRN-KRN] 35...Ra7? [Black should try 35...Rb6!+ And now ...fxg5 would win. 36.gxf6+ Kxf6 37.e5+ Kf7] 36.Nc6= Rc7 37.Nd4 Ra7 38.Nb5 38...Ra2+ 39.gxf6+ Kxf6 40.Nc7 [Better is 40.e5+ dxe5 41.fxe5+ Kxe5 42.Nd4] 40...Rh2 41.Nd5+ Ke6 [D]

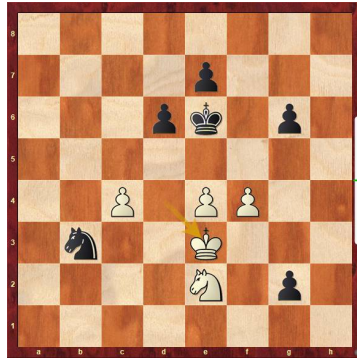


[Black should play 41...Kf7++ aiming for ...Rh3+. 42.Kf3 Rxh4] 42.Nxb4 [42.f5+!+= gxf5 43.exf5+ Kxf5 44.Nxe7+ 42...Rxh4 43.Rg1 Rg4? [Not 43...Nxb3 Ke6 45.Nd5] 44.Rxg6+ Kf7 45.Rh6=; 43...Rh3++ (Text cont. next col.)

(Cont. from prev. col.) 44.Ke2 Rxb3] 44.Rxg4= hxg4 [KN-KN] 45.Nd5 Nxb3 46.Nc3 Na5 47.Kd3 g3 [D]



[Better is 47...Kf6+ Strongly threatening ...e6. 48.Nd5+ Ke6] 48.Ne2 g2 49.Kd4? [49.Ke3!+=] 49...Nb3+ 50.Ke3++ [D]

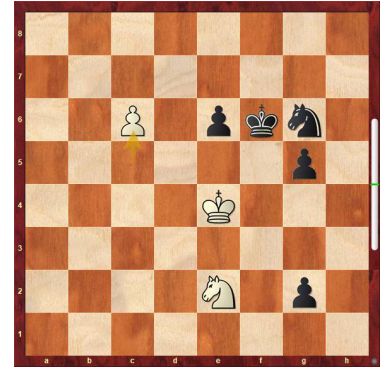


50...Nc1! [White must now prevent ...Nxe2.] 51.Ng1 [51.Nxc1 g1Q+] 51...Kf6 52.Kd4 Ke6? 53.e5? [53.Kc3!= and White has nothing to worry.] 53...dxe5+ 54.fxe5+ [D]



54...Nb3+! 55.Ke4 Nc5+ 56.Kd4? Nd7 57.c5 Nxe5 58.Ke4 Kf6 59.Ne2 g5 60.Ng1? e6 61.Ne2 Ng6 62.c6? [D] (Next col.) 62...Ke7! [Black mates.] 63.Kf3 Kd6 64.c7 Kxc7 65.Kg4 [D] (Next col.) 65...Nf4! 66.Ng1 [66.Nxf4 g1Q+] 66...Kd6 67.Kxg5 Ke5 68.Kg4 Ke4 [D] (Next col.) [omast2 won by resignation. Accuracy: White = 28%, Black = 42%.] 0-1 Copy and paste the link below into your browser: <https://share.chess-base.com/SharedGames/game/?p=qXRjMwKkS66vSh-VJX8DH2hKcDNKtpOX4738qeZlaM0ve7yDeOzcqoaxxcRbG9Lng>

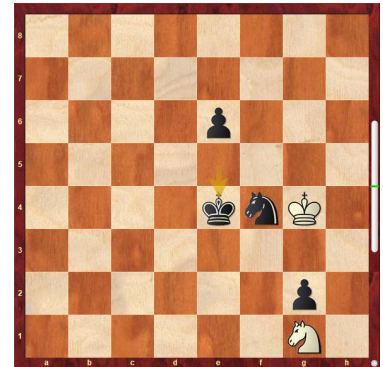
Position after 62.c6? (From prev. col.)



Position after 65.Kg4 (From prev. col.)



Position after 68...Ke4 (From prev. col.)



Bernie Overly

This concludes this issue. More games in next issue.

Allentown Center City Chess Club Offer (from Eric C. Johnson): "For any of our events -- if three or more Lansdale players carpool together -- the designated driver plays for free!" <http://www.freewebs.com/allentowncentercitychessclub>