

# ~ En Passant ~

Newsletter of the North Penn Chess Club, Lansdale, PA – Spring 2020, Part 6

E. Olin Mastin, Editor

North Penn Chess Club  
500 West Main Street  
Lansdale, PA 19446

[www.northpennchessclub.org](http://www.northpennchessclub.org)

(215) 699-8418 [donfunk@msn.com](mailto:donfunk@msn.com)

This issue features Eric Funk's Games from the past as continued from Part 5.

The purpose of these newsletters is to include as many games as possible by NPCC players irregardless of the strength of the participants.

Thanks to all for submitting games!

## Game from the NPCC 2007 Winter Robin Tournament

### Round: 4

Submitted by Eric with his comments and selected Fritz/\*Stockfish comments [shown thus].

**White:** Terry Thomasco (1858)

**Black:** Eric Funk (2046)

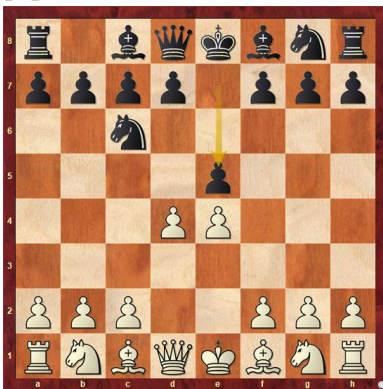
**Date:** 2/2/2007

\*(Please copy and paste the HTML link at the end of this article into your browser to read the complete commentary and to be able to play thru the moves.)

(Text cont. next col.)

(Cont. from prev. col.) [B00: Queen's Fianchetto Defense, Nimzo-witsch Defence] 1.e4 Nc6 2.d4 e5

[D]



(Eric - I love unorthodox openings. The great thing about this system is that Black has so many disreputable yet completely playable alternatives. Besides 2.... e5, there is 2.... d5, 2.... d6, 2.... e6, and 2.... Nf6.) 3.dxe5

Nxe5 4.Nc3 Bb4 5.Nf3 [5.f4 Nc6 6.Qd3 d6 7.a3 Bxc3+ 8.Qxc3 Nf6 9.Qe3 0-0, etc... Ivanovic,B (2440)-Knaak,R (2500) Balashiha 1977 0-1

(Text cont. next col.)

(Cont. from prev. col.) (41); 5.Bd2 Nf6 6.Be2 Qe7 7.f4 Ng6 8.e5 Bxc3 9.bxc3 Ne4 10.Be3 Nxc3, etc...Kolev,L (1633)-Cwiek,R (1348) Kouty nad Desnou 2015 1-0 (45) 5...Bxc3+N [5...Nf6 6.Nxe5 0-0 7.f3 Qe8 8.Nd3 Bxc3+ 9.bxc3 d6 10.Bf4 Qc6 11.Qd2 Nh5, etc... Ebeling,G-Lu,Y Vung Tau 2008 1-0; 5...Nxf3+ 6.Qxf3 Qf6 7.Bd2 Qxf3 8.gxf3 Ne7 9.0-0 a6, etc... Ezzat,T (1665)-Vlatten,A (1947) Dortmund 2005 1-0] 6.bxc3 Nxf3+ [D]



(Eric - 6.... Qf6 was more accurate.)

7.Qxf3 Qf6 8.Be2 [White is slightly better.] [8.Qg3 looks sharper. 8...d6 9.Bb5+ Kf8 (Text cont. p.2)

**\*Tournament has been postponed!**

**NPCC 2020 May Octagonal 40/90; SD/30; d,5  
May 8th, 15th & 22nd.**

**A 3 Round Swiss in 8 player sections or portions thereof**

Registration: 7:00 to 7:45 PM. Please arrive no later than 7:45 PM May 8th to register. Rounds start at 8:00 PM.

Entry fee: North Penn members = \$15 Non-members = \$20.

One 1/2 point bye permitted for Rounds 1 or 2. Must play Round 3 to be eligible for prize.

**Prizes (Based on minimum of 8 Entrants): 1st Place = \$50. 2nd Place = \$30. \*Top in Lower Half\* = \$30**

**\*(Class Prize- Rating TBD on-site).\***



**Note: Tournament has been postponed!**

(Cont. from p.1) 10.0-0 Ne7 11.Re1] 8...Qxf3 9.Bxf3 d6 10.0-0 Ne7 11.Rb1 Rb8 12.Re1 f6 13.Be3 b6 14.Be2 Be6 15.a4 a5 [D]

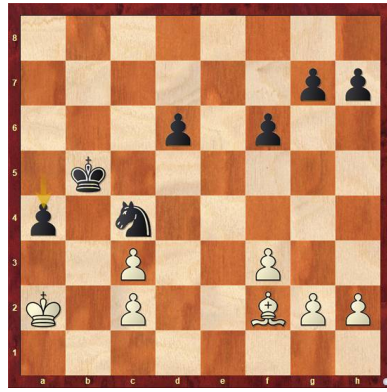


(Eric - This is the sort of position that a computer would be likely to rate White as having a slight edge due to the open center and Bishop pair. I think that if anything Black is slightly better because White's Queenside pawns are potential targets and the Knight is well suited to try to exploit this.) 16.Bb5+ Bd7 17.Bxd7+ Kxd7 18.Rb5 Rhe8 19.f3 Nc6 20.Bd4 Re6 21.Kf1 Rbe8 22.Bf2 Re5 [D]



(Eric - If White trades Rooks I'm going to recapture with the Knight intending to follow up with either Kc6 and b5 or Nc4 ... c6 ... and b5 to try to create an outside passed pawn. If White sits on the position with Rbb1 then I might try Nd8 ... Kc6 ... Nb7 ... and Nc5.) 23.Rd5?? (Eric - This sets off an unfortunate series of trades for White. It may be fair to say this is the losing move.) [23.c4=+] 23...Rxd5!-+ 24.exd5 Rxe1+ 25.Kxe1 [Endgame KB-KN] 25...Ne5 26.Kd1 Nc4 27.Kc1 c6 28.dxc6+ Kxc6 29.Kb1 b5 30.axb5+ Kxb5 31.Ka2 a4 [D] (Next col.) (Eric - Let's take stock. White's King is locked out of the a3-b3-b2 squares, so it can't approach the passed pawn, but it also can't wander too far away. ((If the King were to head to d1 it would be unable to return to b1 in time to stop the pawn.)) White's Bishop is therefore left to fend for itself on the Kingside. Black's (Text cont. next col.)

Position after 31...a4 (From prev. col.)

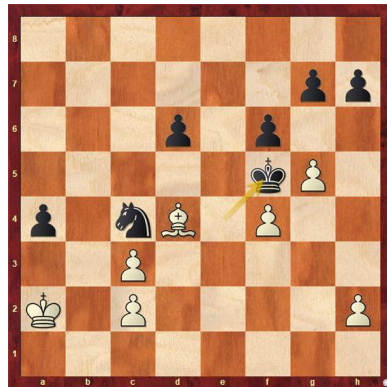


strategy is straightforward. He wants to invade with his King ((aided by some timely assistance by the Knight)) in order to create a second passed pawn.)

32.Bd4 Kc6 33.g4 [D]

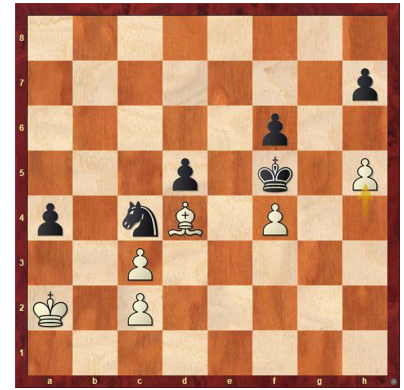


(Eric - White wants to liquidate at least two of the Kingside pawns but this doesn't work. It was better to keep the pawns at home and shuffle around with the Bishop while Black figures out how to make inroads.) [33.Kb1-+ keeps fighting.] 33...Kd5-+ 34.f4? [34.h3] 34...Ke4! 35.g5 Kf5? [D]

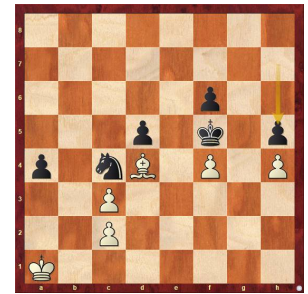


(Eric - Best was 35... f5 36.Bxg7 Kxf4 37.Bf6 Kg4 38.h4 f4 39.h5 Kxh5 with a clear win in sight.) [35...f5 36.Bxg7 Kxf4] 36.h4 [Better is 36.gxf6 gxf6 37.h3] 36...d5 [Less strong is 36...Kxf4 37.gxf6 gxf6 38.Bxf6-+] 37.gxf6 gxf6 38.h5? [D] (Next col.) (Eric - This loses quickly. The thematic end would (Text cont. next col.)

Position after 38.h5? (From prev. col.)



(Cont. from prev. col.) have run something like this: 38.Ka1 h5 39.Ka2 Nd2 40.Ka3 Nf3 41.Kxa4 Nxh4 42.Kb5 Nf3 43.Bf2 h4 44.Bxh4 Nxh4 45.Kc5 Ke4 46.c4 dxc4 47.Kxc4 f5 48.Kb5 Ng2 49.c4 Nxf4 50.c5 Ne6) [38.Ka1 h5 [D]



(Analysis Diagram)

(NOTE: \*Stockfish analysis inserted by editor). Stockfish 10 64: 39.Ka2 Nd2 40.Ka3 Nf3 41.Bf2 Kg4 42.Kxa4 Nxh4 43.Bd4 Kf5, etc...] 38...h6 [Black is clearly winning.] 39.Kb1 Kxf4 40.Bxf6 Kg4 [D]



[Accuracy: White = 61%, Black = 89%]

0-1

Copy and paste the link below into your browser:

<https://share.chess-base.com/SharedGames/game/?p=dPqZr-WRtsv2V//ZZtr-zuCd9kQ90qj3twTKYaBa4D5QIj/mwjg2Ny nWhotidc1EQU>

**Games from the NPCC 2008 Winter Robin Tournament**

**Round: 2** (an assumption)

Submitted by Eric with his comments and selected Fritz comments [shown thus].

**White: John Frisk (1729)**

**Black: Eric Funk (2045)**

**Date: 1/18/2008** (approximated)

\*(Please copy and paste the HTML link at the end of this article into your browser to read the complete commentary and to be able to play thru the moves.)

[D07: Queen's Gambit: Chigorin Defence]

**1.d4 d5 2.c4 Nc6 [D]**



**3.cxd5 Qxd5 4.e3 e5 5.Nc3 Bb4 6.Bd2 [D]**



**6...Bxc3 7.bxc3 exd4 8.cxd4 Nf6 9.f3**

(Eric - Rather than developing "normally" with something like Nf3 ... Be2 ... and O-O John tries for a more ambitious setup.)

**9...0-0 10.Bd3 [D]**



(Text cont. next col.)

(Cont. from prev. col.) (Eric - If given the opportunity White will continue with something like Ne2 ... e4 ... Bc3/Be3 and O-O. I do not give him the chance.) [10.Qb3+=] **10...Nxd4! =** [10...Qg5 11.Kf2 Nd5 12.Ne2 Qh4+ 13.g3 Qf6 14.Be4 Nce7 15.Qc2 Bf5, etc... Smith,A (2384)-Fontaine,R (2562) Stockholm 2008 1-0 (71)] **11.exd4 Qxd4 12.Bc2** (Eric - 12.Be2 was probably more accurate but John wanted to reserve this square for his Knight.)

[12.Be2= Bf5 13.Rc1 Rad8 14.Rc4 Qe5 15.Qc1 Bd3 16.Bc3 Qe6 17.Bxf6 gxf6, etc... Guedon,S (2157)-David,L (1700) Nantes 2009 1-0 (33)] **12...Re8+N** [Black is clearly better.] [12...b6 13.Ne2 Qh4+ 14.g3 Qh3 15.Nf4 Re8+ 16.Kf2 Qd7 17.Bc3 Qc6, etc...1-0 (25) Kononenko,T (2361)-Sanahuja Palomo,A (2054) Castellar 2004] **13.Ne2 [D]**



(Eric - 13.Kf1 gives me a choice between Be6, Bd7, and b6, all with the similar attacking idea of hitting e2 - f1 with the Bishop and then bringing the Queen's Rook to d8.) **13...Ng4! [D]**



(Eric - Threatening mate. The Knight is taboo due to Bxg4 and then capture on e2.) **14.Rf1** (Eric - 14.Bg5 Rxe2+ 15.Kxe2 Qf2+ 16.Kd3 Bf5+ would have led to an exciting King hunt with similar themes to the game. From what I've been able to determine Black is at least drawing and probably winning.) [Not 14.fxg4? Bxg4 15.Be3 Qxe3-+] (Text cont. next col.)

(Cont. from prev. col.) **14...Rxe2+** (Eric - 14... Nxe2 also looked promising. I'm not sure which is better.) **15.Qxe2?** (Eric - This just collapses. I had expected the game to continue with 15.Kxe2 Bd7 16.fxg4 Re8+ 17.Kf3 Bxg4+, winning White's Queen. However, after 18.Kg3 Bxd1 19.Raxd1 it's still a tough game.) [15.Kxe2= and White is okay. 15...Bd7 16.fxg4 Re8+ 17.Kf3 Bxg4+ 18.Kg3 Bxd1 19.Raxd1] **15...Qxa1++ 16.Bd1 Nf6 17.Bg5 Bd7 [D]**



[And now ...Re8 would win.] **18.Bxf6?** [18.Kf2] **18...Qxf6** [Black is clearly winning.] **19.Qd3 Re8+ 20.Kf2 Qb6+ 21.Kg3 Bb5 22.Re1** (Eric - One last swindle attempt. Why not? Of course, not 22... Bxd3?? 23. Rxe8#.) **22...Rxe1 [D]**



[Accuracy: White = 37%, Black = 100%.] [Weaker is 22...Bxd3 23.Rxe8#] **0-1** Copy and paste the link below into your browser:

<https://share.chess-base.com/SharedGames/game/?p=TYJEz/hP1XhQm9Ypt-LvR/BVByycuEqjVQHf30fDhVL6WzDIVxoDnmRGyX5rUoNt>

(p.4) (Text cont. p.4)

**Game from the NPCC 2012**  
**December 4-Round Swiss Tournament**

**Round: 4**

Submitted by Eric with his comments (as edited) and selected Fritz comments [shown thus].

**White: Eric Funk (2048)**

**Black: Doug Kern (1862)**

**Date: 12/21/2012**

(Please copy and paste the HTML link at the end of this article into your browser to read the complete comments and to be able to play thru the moves.)

[A18: English Opening: Flohr-Mikenas System (1 c4 Nf6 2 Nc3 e6 3 e4)] **1.c4 e6 2.Nc3 Nf6 3.e4 d5 4.e5 Ng8 [D]**



(Eric - Not as bad as it looks, but also not as good as any of the main lines: 4.... d4, 4.... Nfd7, and 4.... Ne4.) **5.cxd5** (Eric - 5.d4 is also reasonable.) **5...exd5 6.d4 c6 [6...Bf5 7.Qb3 Qc8 8.Nxd5 Be6 9.Bc4 c6 10.Nc3 Bxc4 11.Qxc4 Qg4 12.g3 b5, etc... Telmanov,A (2132)-Lugovoi,Y (1890) Rostov 2010 1-0 (38)] 7.Bd3 Qb6 8.Nge2 [White is clearly better.] 8...Ne7N [8...Be6 9.f4 Nh6 10.0-0 g6 11.Kh1 Bf5 12.Bxf5 gxf5 13.Ng3 Na6 14.a3 0-0-0 15.Qd3 Nc7, etc... Najdorf,M-Andrade,L San Pablo 1947 1-0; 8...Bg4 9.f3 Bh5 10.0-0 Bg6 11.f4 Bxd3 12.Qxd3 Nd7 13.Kh1 h5, etc... Volosin,V (2305)-Balogh,L (2170) Gyongyos 1996 1-0] **9.0-0 Bf5 10.Bg5 Bxd3 [D]****



(Eric - A developing move like 10.... Nd7 might have led to some strange gambit possibilities:

(Text cont. next col.)

(Cont. from prev. col.) 10.... Nd7 11.Bxf5 Nxf5 12.e6 fxe6 13.Nf4, threatening on the next move Qh5+ or Nxe6 or Re1.) **11.Qxd3 Na6 12.Qh3** (Eric - Prevents, or at least stalls, Queenside castling, keeping Black's King in the center.) **12...Nc7 [D]**



(Eric - Headed for e6 to make Queenside castling possible again. Understandably Doug doesn't want to play Ng6 ... Be7 ... and O-O in the face of a possible King-side pawn storm with f4 - f5. It turns out that this was the safer option.) [Better is 12...h6 13.Rac1 Qd8] **13.Na4!+- Qb4 14.Nc5 [D]**



(Eric - The mate threat is incidental. The purpose of this move is to compel Black's next move which will keep the King in the center a little longer.)

**14...Rd8 15.Rfe1 [D]**



(Eric - To understand the gravity of Black's present situation take a moment to consider what his next move (Text cont. next col.)

(Cont. from prev. col.) should be. Not so easy, is it? If the Rd8 moves, he's mated. If 15.... Ng6, then Bxd8 and Black can't even recapture. 15.... f5 gets crushed by exf6. On 15.... g6, Bf6 tightens the noose. 15.... b6 allows Nb7 followed by Nd6+ or Nxd8. 15.... Qxb2 allows Rab1 followed by Nxb7. On 15.... Ne6 16.Nxe6 fxe6 17.Qxe6 Black drops a pawn without gaining any relief. So what's left? By process of elimination there are two reasonable tries: 15.... Na6 and the move he chose. Neither one is enough.)

**15...h6 16.a3 Qb6 17.Ng3 Ne6 18.Bxe7 [ Much less strong is 18.Nxe6 fxe6 19.Ne2 Rd7+-] 18...Bxe7 [D]**



**19.Nxe6 fxe6 20.Qxe6 c5 [D]**



(Eric - Trading Queens was also reasonable but I felt I should be able break through and mate or at least pick up some more material before trading down.) **21.Qg4 g5?** (Eric - 21.... g6 22.e6 Rg8 23.Nf5 Bg5 24.h4 gxf5 25.Qh5+ Ke7 26.Qf7+ Kd6 27.e7 won't end well for Black but 21.... O-O 22.Nf5 Bg5 23.h4 Rxf5 24.Qxf5 Bxh4 looks like it gives Black a fighting chance.) [21...0-0 22.e6 Qb3] **22.e6 [D] (p.5) [White wants to mate with Qh5+.] 22...0-0** (Eric - 22.... Rc8 looks like a harder nut to crack. The best I can come up with is 23.Qh5+ Kd8 (Text cont.p.5)

Position after 22.e6 (From p.4.)



24.Nf5

Rc7 25.Qf3 Qc6 26.Re5 which is probably good enough but not as crisp and decisive as I would have hoped.) 23.Nf5 Rxf5 [D]



(Eric -

23... Qc7 24.Qh5 Rxf5 25.Qg6+ pretty much amounts to the same thing as the text.) 24.Qxf5 Rf8 25.Qg6+ Kh8 26.Qxh6+ Kg8 27.Qg6+ Kh8 28.Re3 [D]



[Accuracy: White = 100%, Black = 63%.] 1-0 Copy and paste the link below into your browser:

<https://share.chess-base.com/SharedGames/game/?p=RxcQ3JKWvOhcLujn1AYKud4yIHZNlohrD-FTPXp5PuN/0IV+Kav6kkwX3fr+16Uy>

Eric Funk's "Games from the Past" are now concluded as per all of his games submitted by June 13, 2020.

The next few games have been submitted by Bernie Overly as played on the International Correspondence Chess Federation (ICCF).

## Game from the ICCF World Zone Championship Preliminary Group 17 Tournament

Round: -

Submitted by Bernie with his comments and selected Fritz/\*Stockfish comments [shown thus].

White: Bernard L. Overly (1817)

Black: Ricardo Gurgel Azzi (1490)

Date: 5/31/2020

\*Please copy and paste the HTML link at the end of this article into your browser to read the complete

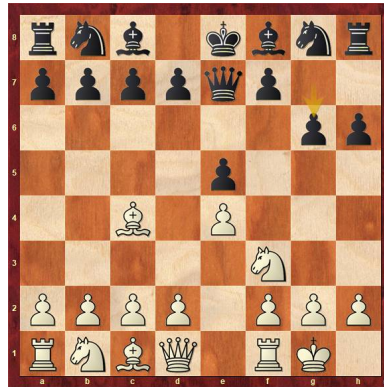
\*Stockfish comments (found at the end of the article) and to be able to play thru the moves.

(Bernie - The additional lines are mine and notes that I took during the game. Most of the time it's the brute force method. My positional assessments may not be the best. I didn't run this through an engine yet.)  
(<sup>1</sup>Editor's Note: It has now been run thru Fritz!)

[C40: Latvian and Elephant Gambits]

1.e4 e5 2.Bc4 Qe7 3.Nf3 h6

4.0-0 g6N [D]



[4...Nf6 5.Re1 d6 6.d4 Bg4 (6...c6 7.a4 Qc7 8.b3 Bg4 9.Bb2 Nbd7, etc... Fernandez,J-Cuartas,C Cienfuegos 1975 ½-½ (74)) ; 4...d6 5.d4 Nf6 6.Re1 (6.Nc3 c6 7.a4 Bg4 8.dxe5 dxe5 9.b3 Qc7, etc... Niedermaier,H (2250)-Gietl,T (2230) Roethenbach 1996 0-1 (49)) 6...Bg4 7.c3 (7.dxe5?! dxe5 8.b3) 7...c6 8.Nbd2 g5 9.Nf1+; 4...Nc6 5.Nc3 Nf6 6.d3 Na5 7.Bb3 Nxb3 8.axb3 b6, etc... Safar,S (1707)-Galic,S (1957) Opatija 2014 1-0 (32); 4...b6 5.Nc3 c6 6.d4 d6 7.Re1 g5 8.h3 b5 9.Bb3 b4 10.Ne2 Nf6 11.Ng3 Be6, etc... Yokomizo,W (1440)-Strazzer,E (1302) Mogi das Cruzes 2013 1-0 (44)] (Text cont. next col.)

(Cont. from prev. col.) 5.Nc3 c6 [5...Nf6 6.d4 d6 7.Be3 Nc6 8.d5 Nb8 9.Ne1 Bg7 10.Nd3 a6 11.f3 Nbd7 12.a4 Nh5 13.a5 f5 14.Qd2 Ndf6 15.exf5 gxf5 16.g3+]=] 6.d4 d6 [D]



7.dxe5 dxe5 8.Qe2 [White is better.]

[8.a4 Nf6 9.Re1 Na6 (9...Nbd7 10.a5 Nc5 11.b4 Ncd7, etc...)] 8...Bg7 [8...Nf6 9.a4

Bg7 10.b3 0-0 11.Ba3 c5 12.Rad1 Bg4 13.Rfe1 Na6, etc...] 9.a4 Nf6 10.Rd1 0-0 11.b3 Bg4 [D]



[11...c5 12.Bb2 Re8+] 12.h3 Bxf3 13.Qxf3 Nbd7 [D]



[13...c5 14.Nd5 Nxd5 15.Rxd5 Nd7 16.Ba3 Rfc8 17.Qc3 b6 (17...Nb6? 18.Rxc5! Qd8 19.Bd3 Nd5 20.Qa5 Qxa5, etc...; Better is 17...Nb6) 18.Re1 Nf6 19.Rxe5 Qd6 20.Bb2 Nh5 21.Bd5! Rab8 (21...Bf6+- was called for.) 22.g4 Nf6 (Better is 22...Bxe5 23.Qxe5 Qxe5 24.Bxe5 Ng7) 23.Bxf7+! Kxf7, etc...] 14.Ba3 c5 15.Qg3 Kh7 [15...Rad8? 15...Nb6 16.Qxg6] 16.Qe3 b6 [16...Rac8] (Text cont. p.6)

(Cont. from p.5) 17.Nb5 a6 18.Nd6 Rc7  
19.Be2 Rd8 20.Nc4+- b5 21.axb5 axb5,  
etc...] **17.Rd2** [17.Bb2 Rad8 18.f3 (18.Nd5  
Nxd5 19.exd5 Nf6

**a)** 19...Qd6 20.a5 f5 21.axb6 axb6 22.f3  
Ra8 (22...Rf7+=) 23.Bb5 Rxa1 24.Rxa1  
Qxd5, etc... 25.Qe2 ( White should try  
25.Ra7+- Qd1+ 26.Kf2 Qxc2+ 27.Qe2 Qxe2+  
28.Kxe2) 25...Qb7 26.Qd1 Nf6, etc...

**b)** 19...Qd6+=; 20.Qxe5 Qxe5 21.Bxe5+-)  
18...Nb8 19.Nd5 Qd6 20.Rd2 Nc6 21.Rad1  
h5 22.Qf2 Nxd5, etc...]

**17...Rad8 18.Rad1 Nh5?! [D]**



**19.Nd5 [D]**



**19...Qe8?** [19...Qh4 20.Qf3 Nb8 21.a5 Nc6  
22.axb6 axb6 23.Nxb6 Nd4 24.Qg4+- Qe7,  
etc...] (Bernie - Using the pin.) **20.Bb5!+-  
[D]**



[White is clearly winning.] **20...a6**  
[20...Qe6 21.Nc7] (Bernie - Wins Black's  
Knight!) [21...Qf6 (21...Qe7 22.Rxd7 Qh4  
23.Na6 Qf6 24.Bc4 Nf4 25.Nc7 Rxd7  
26.Rxd7 Qc6, etc...)] **21.Nc7 [D]** (Next  
col.) (Text cont. next col.)

**Position after Position after 21.Nc7**  
(From prev. col.)



(Text cont. next col.) [End of game]

**1-0**

Bernie - Possible moves: 21...Qe7  
22.Rxd7 [D]



[Accuracy: White = 82%, Black = 51%.]

[\*Stockfish 10: 22...Qh4 23.Nxa6 Rxd7  
24.Rxd7 Nf6 25.Rb7 Rd8 26.Bd3 Nd7  
27.a5 Qf6, etc...]

Copy and paste the link below into your  
browser:

<https://share.chess-base.com/SharedGames/game/?p=aojRLVU5FI2+JGifhzwCLPRYF1wWf1aKndWasgpbu3RwWd/mU1yjiOlwEuijHDC>

### **Game from the ICCF Brazil-USA 2020 ICCF Tournament**

**Round: -**

Submitted by Bernie with selected Fritz  
comments [shown thus].

**White: Bernard L. Overly (1843)**

**Black: Dionisio Kiss (1857)**

**Date: 3/27/2020**

[C27: Vienna Game: 2...Nf6 3 Bc4 Nxe4]

**1.e4 e5 2.Nc3 Nf6 3.Bc4 Nxe4**

**4.Qh5 Nd6 [D]** (Next col.) **5.Bb3 Be7**

**6.Nf3 Nc6 [D]** (Next col.)

**7.Nxe5 Nxe5 8.Qxe5 0-0 9.0-0**

[9.Nd5+- Bf6 10.Nxf6+ Qxf6 11.Qxf6 Re8+

12.Kf1 gxf6 13.d3] **9...Bf6= 10.Qf4**

**Ne8 [D]** (Next col.) [10...Bg5= 11.Qf3

Qf6] **11.d4 c6** [11...a5=] **12.d5!+- d6**

[Black should try 12...a5+=] **13.Ne4**

[13.Qf3+-] **13...Be5N** [13...c5 14.Nxf6+

Qxf6 15.Qg3 (15.Qxf6 Nxf6 16.Bf4 Rd8

17.c4 a6 18.Bc2 b5, etc... Kassis,A (2162)-

(Text cont. next col.)

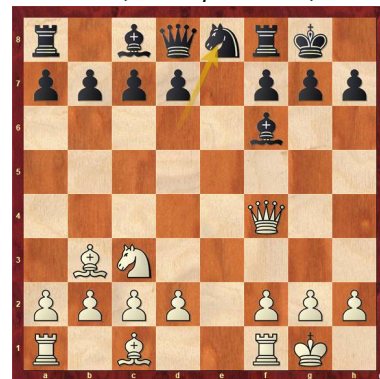
**Position after Position after 4...Nd6**  
(From prev. col.)



**Position after Position after 6...Nc6**  
(From prev. col.)



**Position after Position after**  
**10...Ne8** (From prev. col.)



(Cont. from prev. col.) Bassel,C (2136)  
Beirut 2015 ½-½] **15...Qg6 16.Bf4 Qxg3**  
**17.fxg3 f6 18.c4 Rf7 19.Rae1 Bd7, etc...**  
Vozniak,B-Kolodiy,T Rodatychi 2006 1-0  
(43)] **14.Qe3 Nf6 15.Nxf6+ Qxf6 [D]**



**16.c3 Qf5** (Text cont. p.7)

(Text cont. next col.) [16...Qg6= keeps the balance.] 17.dxc6 [17.h3!+] 17...bxc6= 18.f4 Bf6 19.Qf2 Re8 20.Be3 Be6 21.Rfd1 [D]



21...Bxb3 22.axb3 Qe6 23.Bxa7 c5 24.Ra3 Qe7 25.Rda1 [With the idea Bxc5.] 25...Qb7 26.Qc2 [D]



[26.Qf3= Qxf3 27.gxf3] 26...Rad8 [Better is 26...Rac8+] 27.Ra6 [27.b4= remains equal.] 27...Re3 [Black should play 27...Re6+] 28.Qf2! Qxb3 [28...Re4=+] 29.Bb6! [Much weaker is 29.Qxe3 Bd4+; 29.Bxc5? dxc5 30.Ra8 (30.Qxe3? Bd4+) 30...Ree8+] 29...Rde8 [Next ...R3e7 is good for Black.] 30.Bc7 [D]



[Reject 30.Qxe3 Bd4+; 30.Ra8!= was the only way to keep the balance. 30...Qd5 31.Qxe3 Rxa8 32.Rxa8+ Qxa8 33.b4] 30...h6-+ [Strongly threatening ...Re2.] 31.Ra8 [D] (Next col.) 31...Rxa8! 32.Rxa8+ Kh7 [(-> ...Qd1+)] 33.Ra1 [D] (Next col.) [33.Qxe3? perishes. 33...Bd4+; 33.Qd2+ was worth a try.] (Text cont. next col.)

Position after Position after 31.Ra8 (From prev. col.)



Position after Position after 33.Ra1 (From prev. col.)



(Cont. from prev. col.) 33...Rd3!-+ 34.Re1 Qd5 35.g3 Rd2 36.Re2 Rd1+ 37.Re1 Rxe1+ 38.Qxe1 [D]



38...Qc6 39.Ba5 c4 [39...d5-+ and Black stays clearly on top. 40.Qe2 d4] 40.Qf2-+ Qe4 41.Bb6 g5? [41...d5=+ keeps the upper hand.] 42.fxg5+- Qb1+ [White is winning.] 43.Kg2 [D]



(Text cont. next col.)

(Cont. from prev. col.) 43...Qe4+ 44.Qf3 Qxf3+ 45.Kxf3 Bxg5 46.Ke4 Bc1 [D]



Accuracy: White = 72%, Black = 69%. An unexpected result.] ½-½

Copy and paste the link below into your browser:

<https://share.chess-base.com/SharedGames/game/?p=au1XMu1Ik7xd16BnM/yjZA0S+KOLu11Bp2DY+pdsBJgmX/dl3XLJpKsXH3vvSIyZ>

## Game from the ICCF Brazil-USA 2020 Tournament

### Round:-

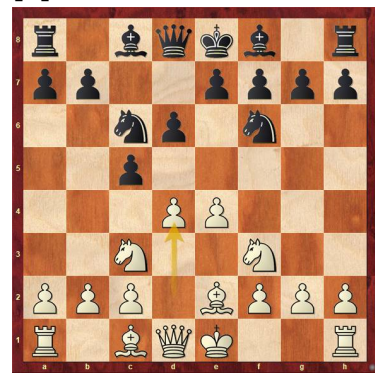
Submitted by Bernie with selected Fritz comments [shown thus].

White: Dionisio Kiss (1857)

Black: Bernard L. Overly (1843)

Date: 3/27/2020

[B58: Classical Sicilian: 6 Be2] 1.e4 c5 2.Nf3 d6 3.Be2 Nf6 4.Nc3 Nc6 5.d4 [D]



5...cxd4 6.Nxd4 e5 [D] (p.8) 7.Nxc6 bxc6 8.0-0 Be7 9.Qd3 0-0 10.Qg3 [10.f4+=] 10...Rb8 [10...Nd7=; 10...Be6 11.Kh1 Nd7 12.f4 exf4 13.Bxf4 Bh4, etc... ½-½ (17) Bielczyk,J (2380)-Typek,K (2410) Lubniewice 1994] 11.b3+= Be6N [D] (p.8) [11...Rb4+=; 11...Kh8 12.Bb2 Rb4 13.Qe3 d5 14.Qxa7 d4 15.Na4 Rb7, etc... Poulsen,A (2330)-Fuglsang,F Copenhagen 1979 0-1 (40)] 12.f4 Kh8 (Text cont. p.8)

Position after 6...e5 (From p. 7)



Position after 11...Be6N (From p. 7)



(Cont. from p. 7) [The position is equal.] 13.Kh1 [13.h3+=] 13...Qc7 [13...Rb4=] 14.f5 Bc8! 15.Bb2 [15.Bg5+=] 15...Qa5 [15...g6=] 16.Rad1 [16.Rae1+=] 16...Ba6 [D]



[16...Bb7=] 17.Bxa6 [17.Rfe1+=] 17...Qxa6 18.Bc1 [18.Rfe1+=] 18...Rb4 [18...Rfd8=] 19.Rfe1 [White should try 19.Qf3!+=] 19...Qa5 [19...Rd4=] 20.Rd2 [20.Qe3+=] 20...Rd4= 21.Rde2 d5! [D]



(Text cont. next col.)

(Cont. from prev. col.) 22.Qxe5 [22.a3= was preferable.] 22...Qxc3+= 23.Qxe7 [23.Bd2= keeps the balance. 23...Qc5 24.Be3 Rxe4 25.Bxc5 Rxe5 26.Bxe7 Rxe2 27.Rxe2] 23...Re8+= 24.Qxa7 Rdx4 [D]



25.Rxe4 Nxe4 [With Attack] [White needs to defend precisely.] 26.Rf1 f6 [Much worse is 26...Qxc2 27.Qxf7 Ra8 28.Bf4=; 26...h6+=] 27.Be3 [27.Bf4!= remains equal.] 27...Rg8 [27...h6+=] 28.Bg1 Qxc2 29.Rf3 [D]



29...c5! 30.a4 [Only move: 30.Qa6!+=] 30...d4+= [Hoping for ...d3.] 31.Qa6 h6 32.Qb5? [D]



[32.a5+= was the only defense.] 32...Rd8! 33.Qb6 Re8 34.Qb5 Re7 35.h3? [35.Qc4 Qxc4 36.bxc4] 35...Qc1 36.Kh2 Nd2 37.Rf4 [D] (Next col.)

(Text cont. next col.)

Position after 37.Rf4 (From prev. col.)



(Cont. from prev. col.) [Better is 37.Rf2 Re1 38.Qb8+ Kh7 39.Qg3] 37...Kh7 38.b4 c4 39.Bxd4 Nf1+ [D]



[Black mates.] 40.Rxf1 Qxf1 41.Qb8 Re1 42.Qc7 h5 43.Bxf6 Qg1+ 44.Kg3 Re3+ 45.Kf4 Qf2+ [D]



[Accuracy: White = 31%, Black = 70%.] 0-1 Copy and paste the entire link below into your browser:

<https://share.chess-base.com/SharedGames/share/?p=REcrD8lCtYtsl5Kth-Bmvl+Q5HztaQ/UvEy/Hpl0K6ReLrwB5zH3K+Hd4UXz3xd>

This concludes this issue.  
More games in next issue.

**Allentown Center City Chess Club Offer** (from Eric C. Johnson): "For any of our events -- If three or more Lansdale players carpool together -- the designated driver plays for free!"

<http://www.freewebs.com/allentowncentercitychessclub>