

~ En Passant ~

Newsletter of the North Penn Chess Club, Lansdale, PA – Spring 2020, Part 5

E. Olin Mastin, Editor

North Penn Chess Club
500 West Main Street
Lansdale, PA 19446

www.northpennchessclub.org

(215) 699-8418 donfunk@msn.com

This issue features Eric Funk's Games from the past as continued from Part 4.

The purpose of these newsletters is to include as many games as possible by NPCC players irregardless of the strength of the participants. Thanks to all for submitting games!

Game from the NPCC 1985 Winter Robin ??, 1985 Tournament

Round: ??

Submitted by Eric with his comments and selected Fritz comments [shown thus].

White: John Hathaway (2050)

Black: Eric Funk (Age 17?) (1950)

Date: ??/??/1985

[E12: Queen's Indian: Unusual White 4th moves, 4 a3, 4 Nc3 Bb7 5 a3 and 4 Nc3 Bb7]

(Text cont. next col.)

(Cont. from prev. col.)

Eric wrote:

"One last game. This was in 1985 and I think it was the Winter Robin, so depending on the exact date, I was either 16 or had just turned 17 at the time. My opponent was longtime NPCC club member John Hathaway who once famously won the PA State Championship by beating FIDE Master and Chess Life correspondent Alex Dunne."

(Eric - This is another game I had written extensive notes for without any computer assistance ((all of this was in an age when downloadable chess software was still well below GM strength)). Sadly, I've lost them. This game is so complicated I'm not even going to try to annotate it without silicon assistance. All I'm 100% sure of is that somewhere in this mess John missed a win.)

(Text cont. next col.)

(Cont. from prev. col.) 1.d4 Nf6
2.c4 e6 3.Nf3 b6 4.a3 Ba6 5.Qc2
c5 6.e4 [6.d5!+-] 6...d5 [D]



[6...cxd4+= 7.e5 Ng8 8.Bd3 Qc7 9.0-0 Nc6 10.Bf4 Nge7 11.b4 Bb7 12.Nbd2 f5 13.h4 Ng6, etc... Socko,M (2325)-Ioseliani,N (2500) Yerevan 1996 0-1 (39)] 7.Bg5? [7.cxd5!+- Bxf1 8.Kxf1 (8.Rxf1 exd5 9.Bg5 dxe4+-)] 7...Be7? (Text cont. p.2) [7...dxe4= 8.Bxf6 gxf6 9.Qxe4 Nd7] 8.e5 [8.cxd5+- Bxf1 9.Kxf1] 8...Ne4N [8...Nfd7!+= 9.Bxe7 Qxe7 10.cxd5 exd5 11.Nc3 Qe6 12.Ng5 Qh6 13.Qf5 0-0, etc... Levin,E (2508)-Lobanov,S (2148) (Text cont. p.2)

*Tournament has been postponed!

**NPCC 2020 May Octagonal 40/90; SD/30; d,5
May 8th, 15th & 22nd.**

A 3 Round Swiss In 8 player sections or portions thereof

Registration: 7:00 to 7:45 PM. Please arrive no later than 7:45 PM
May 8th to register. Rounds start at 8:00 PM.

Entry fee: North Penn members = \$15 Non-members = \$20.

One 1/2 point bye permitted for Rounds 1 or 2. Must play Round 3 to be eligible for prize.

Prizes (Based on minimum of 8 Entrants): 1st Place = \$50. 2nd Place = \$30. *Top in Lower Half* = \$30

(Class Prize- Rating TBD on-site).



Note: Tournament has been postponed!

(Cont. from p.1) St Petersburg 2013 1-0 (37)] **9.Bxe7+- Qxe7?** [9...Kxe7+- 10.Nbd2 Nxd2 11.Qxd2 h6] **10.Bd3?** [10.cxd5!+- Bxf1 11.Qxe4 (11.Rxf1 exd5 12.Nbd2 Nxd2=)] **10...f5?** [10...0-0= and Black has nothing to worry.] **11.0-0?** [D]



[White should try 11.cxd5+- Threatens to win with Bxa6. 11...Bxd3 12.Qxd3] **11...0-0=** **12.Nbd2** [12.cxd5+= keeps the upper hand. 12...exd5 13.Nc3] **12...Bb7** [12...Rd8+] **13.Rac1** [13.cxd5= exd5 14.Rfc1] **13...Nd7** [13...Rc8=+] **14.Nb3** [14.cxd5= Nxd2 15.Nxd2 (15.Qxd2 Bxd5 16.Qf4 h6=)] **14...Rac8** **15.Qe2 Rfd8** **16.Rfd1**[D]



(Eric - Queue dramatic music. The fireworks display is about to begin.) [16.h4=+] **16...cxd4** [Better is 16...Bc6+] **17.Nbxd4+= Ndc5** [17...g5= remains equal.] **18.Bb1** [18.cxd5+- Bxd5 19.Bc4] **18...dxc4** **19.Ba2** [D]



(Text cont. next col.)

(Cont. from prev. col.) **19...Nd3** [Black should play 19...b5!= 20.Nxb5 Rxd1+ 21.Rxd1 Nd3 22.Bxc4 Nf4] **20.Rxc4 Ndxg2?** [D]



[20...Nf4= and Black stays safe. 21.Qf1 Rxc4 22.Bxc4 Nd5] **21.Nxf5!+-** [D]



(Eric - What a hideous mess!! I love it!!) **21...Rxd1+** [D]



[21...exf5 22.Rxc8+] **22.Qxd1! Qf8?** [22...Qe8 23.Rxc8 Bxc8; 22...Nxd1 23.Nxe7+] **23.Qd7 Kh8?** [23...Rd8 24.Qxe6+ Kh8] **24.Qxb7 Rxc4** **25.Bxc4 exf5** **26.Qxa7?** [26.e6 White wants to mate with Qf7. 26...Nd6 27.Qc7] **26...Qd8?** [26...Nh3+ 27.Kf1 Qc8] **27.Qa4?** [27.e6 Qd1+ 28.Bf1] **27...h6** [Better is 27...Ng4] **28.e6** [Aiming for Qd7.] **28...Qc7?** [28...Qd6 29.Qd7 (29.e7 Qxe7 30.Qa8+ Kh7+-) 29...Ng4] **29.Qa8+?** [Less strong is 29.e7 Qxe7 30.Qa8+ Kh7+-; 29.Qb4+- Strongly threatening e7. 29...Qf4 30.e7 Nh3+ 31.Kf1 Qc1+ (Text cont. next col.)

(Cont. from prev. col.) **32.Ne1 Qf4+** **33.Ke2 Qg4+** **34.Ke3 Qf4+** **35.Kd3 Nc5+** **36.Kc2 Qe4+** **37.Bd3 Qxe7** **38.gxh3** **29...Kh7=** [D]



(-> ...Qc5). The position is equal.] **30.Qd5 Qf4** (With initiative!) [Black is more active.] **31.e7** (Eric - and now I slip away with a forced draw by repetition.) [Intending Qg8+ and mate.] **31...Nh3+** **32.gxh3 Qe3+** **33.Kg2** [D]



[Threatening mate with Qg8+.] **33...Qf2+** **34.Kh1 Qxf3+** **35.Kg1** [White threatens Qg8+ and mate.] **35...Qf2+?** [35...Qe3+= 36.Kg2 Qf2+ 37.Kh1 Qf3+ 38.Kg1 Qf2+ 39.Kh1 Qf3+] **36.Kh1+-** [Qg8+ would kill now.] **36...Qf3+** [D]



[Accuracy: White = 38%, Black = 18%. An unexpected result.] $\frac{1}{2}$ - $\frac{1}{2}$

Copy and paste the link below into your browser:

<https://share.chessbase.com/SharedGames/game/?p=7lLpZ26i2l8Wctqh/35OoTj3JNW8HYFzyyruXu0vhZ4yHONJds/mEjeXewX2Rwks>

**Game from the NPCC 1995
Winter Robin Tournament**

Round: 6

Submitted by Eric with his comments and selected Fritz comments [shown thus].

White: Bill Hildebidle (2147)

Black: Eric Funk (2063)

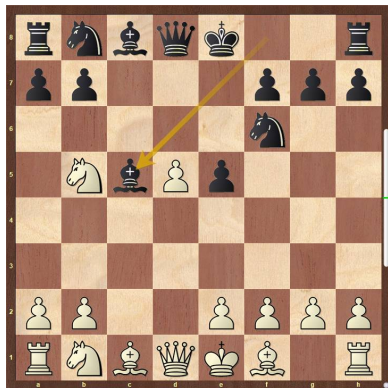
Date: 2/10/1995

[A31: Symmetrical English: 2 Nf3 Nf6 3 d4]

1.d4 Nf6 2.Nf3 c5 3.c4 [D]



3...cxd4 4.Nxd4 e5 5.Nb5 d5 6.cxd5 Bc5 [D]



(Eric - So far this is all "book." Obviously not 6... Nxd5 7.Qxd5 Qxd5 8.Nc7+) **7.e3 0-0 8.N5c3 e4 9.Be2 Qe7 10.Nd2 Rd8 11.Qb3 [11.0-0 Na6 12.a3 Nc7 13.b4 Bd6 14.Qc2 Bg4 15.Nc4 Bxe2, etc... Miles,A (2615)-Ristic,N (2370) Metz 1995 1-0 (41)] 11...Bf5 12.0-0 Nbd7 [D]**



(Eric - Inviting 13.Qxb7 which allows me to choose between 13... Rab8 and Rdb8, both with adequate play.) (Text cont. next col.)

(Cont. from prev. col.) [12...Na6= 13.Rd1 Nb4 14.Nf1 Qe5 15.Ng3 Bg6 16.Bd2 h5 17.h4 Nbxh5, etc... Lercel,M (2222)-Licznerski,L (2318) Wroclaw 2014 ½-½ (67)] **13.Nc4N [13.Qxb7+- Rab8 14.Qc7; 13.Rd1 Ne5 14.Nc4 Nxc4 15.Bxc4 Bd6 16.g3 Bg4, etc...0-1 (24) Tsevremes,I (2145)-Tzermadianos,A (2400) Kavala 1995] 13...Ne5= 14.Nxe5 [White should try 14.Bd2=] 14...Qxe5=+ (Eric - Still inviting Qxb7. E.g. 15.Qxb7 Rab8 16.Qa6 Nxd5 17.Nxd5 Rxd5 is fine for Black.) 15.f4 [15.Bd2=] 15...exf3!+- 16.Bxf3 [D]**

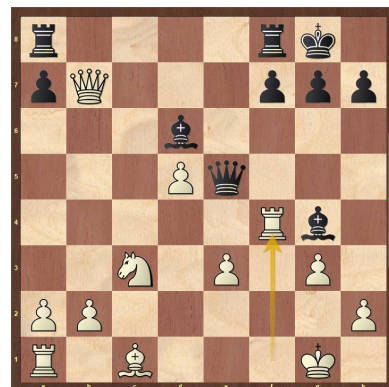


16...Bd6 (Eric - 16... Bxe3+ 17.Bxe3 Qxe3+ 18.Kh1 regains the pawn but allows White to connect his Rooks with an easy game. The text move is riskier but more promising.) [Of course, not 16...Bxe3?! 17.Bxe3 Qxe3+ 18.Kh1=; Better is 16...Rac8! 17.g3 Bd3] 17.g3 Ng4 [Better is 17...Rac8-+] 18.Bxg4 [D]

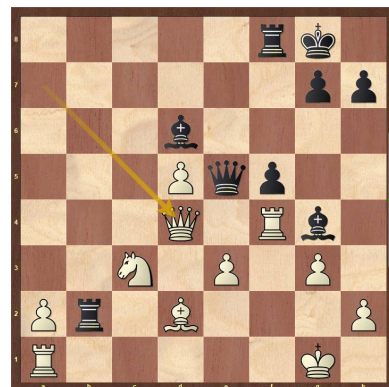


(Eric - Black threatened Nxh2 followed by Qxg3+. In the postmortem we looked at Bill's suggestion of 18.Ne2 when 18... Bc5 looks like the right way for Black to try to keep the initiative. Neither of us considered the annoying 18.e4 - 18... Nxh2?? 19.Bf4. Play might have continued 18.e4 Bd7 19.Bf4 Qh5 20.Bxg4 Bc5+ 21.Kg2 Bxg4 22.h4 etc.) [White must play 18.e4!+= Bc8 19.Kg2] **18...Bxg4=+ 19.Qxb7 [19.Qc4= deserves consideration. 19...f5 20.Bd2] 19...Rf8 [19...Qh5=+] (Text cont. next col.)**

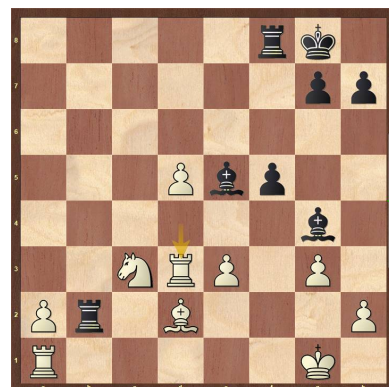
(Cont. from prev. col.) **20.Rf4 [D]**



(Eric - Not 20.Rxf7?? Rxf7 21.Qxa8+ Rf8 22.Qxa7 Qf6 when White gets mated.) [20.Qa6= remains equal.] **20...f5 [20...Qh5!+- 21.Rf1 Be5] 21.Bd2 Rab8 [With initiative] [Black has the initiative.] 22.Qxa7 Rxb2 23.Qd4 [D]**

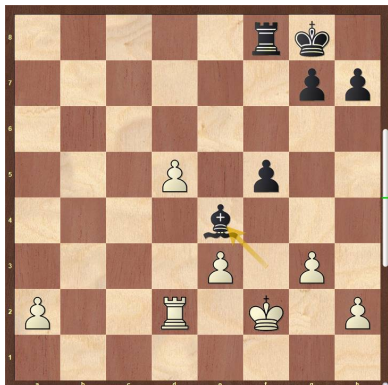


(Eric - At first glance it looks like White has consolidated and is ready win with his extra pawns. It's an illusion.) **23...Qxd4 [23...Rc8=+ 24.Rf2 Qxd4 25.exd4 Bb4] 24.Rxd4= Be5! 25.Rd3 [D]**

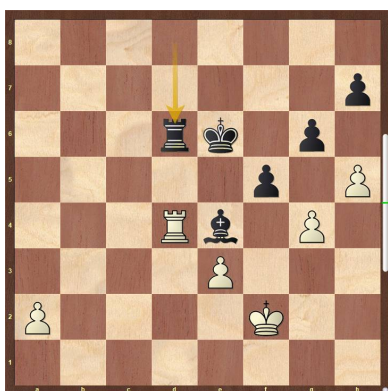


(Eric - 25.Rxg4 fxg4 26.Rd1 Rxd2 27.Rxd2 Bxc3 was still losing but makes Black work harder.) [25.Rb1!+= Rxb1+ 26.Nxb1 Bxd4 27.exd4] **25...Rxd2! 26.Rxd2 Bxc3 27.Rad1 Bxd2 28.Rxd2+- [Endgame KRB- KR] 28...Bf3 29.Kf2? [29.a4] 29...Be4 [D] (p.4) (Text cont. p.4)**

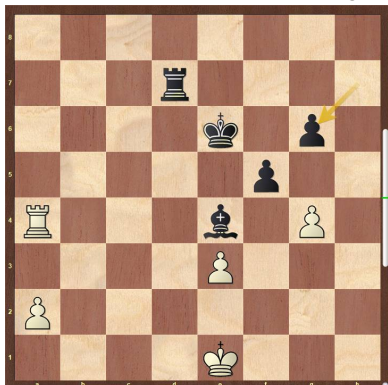
Position after 29...Be4 (From p.2)



(Cont. from p.3) (Eric - The light-squared Bishop dominates!) **30.Rd4** [Better is 30.d6 Kf7 31.Rd4] **30...Rd8** **31.d6** [Better is 31.g4 Rxd5 32.Kg3] **31...Kf7** **32.g4 g6** **33.h4?** [33.d7] **33...Ke6** **34.h5 Rxd6** [D]

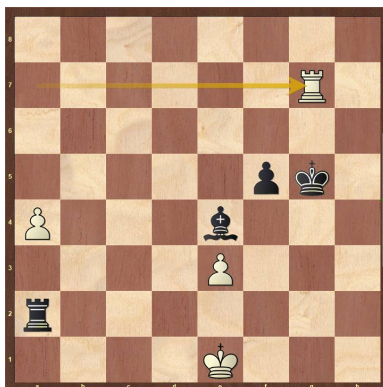


35.Ra4 Rd2+ 36.Ke1 Rd7 37.hxg6? [37.Rxe4+ fxe4 38.Kf2] **37...hxg6** [D]

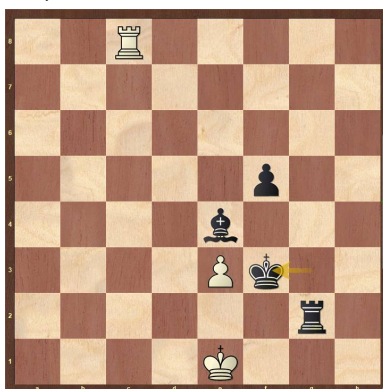


[Black is clearly winning.] **38.Kf2 Rd2+ 39.Ke1 Rg2 40.Ra6+ Ke5** (Eric - Time control. After 41.Rxg6 Rxd4 42.Rxg4 fxd4 43.Kf2 Kf5 44.Kg3 Kg5 the win couldn't be easier. All Black must do is to shuffle his Bishop until White runs out of pawn moves.) **41.Ra5+ Kf6 42.gxf5 gxf5 43.a4 Ra2 44.Ra7 Kg5 45.Rg7+ [D]** (Next col.) **45...Kh4 46.a5 Rxa5 47.Kd2 Rc5 48.Rg8 Rc2+ 49.Kd1 Rg2 50.Rc8 Kg3 51.Ke1 Kf3 [D]** (Next col.) [Accuracy: White = 38%, Black = 72%.] **0-1** (Text cont. next col.)

Position after 45.Rg7+ (From prev. col.)



Position after 51...Kf3 (From prev. col.)



(Cont. from prev. col.) Copy and paste the link below into your browser: <https://share.chessbase.com/SharedGames/game/?p=bxYGGSlk5uRz0FWVVW16mh3VgqumDpa1ictMz/FJQtfyFwAiorniYpdJ9IHTRKsK3>

Game from the NPCC 2001 Summer Robin Tournament Round: 3

Submitted by Eric with his comments and selected Fritz comments [shown thus].

White: Eric Funk (2004)

Black: Joe Weber (2200)

Date: 8/10/2001

(Please copy and paste the HTML link at the end of this article into your browser to read the complete commentary and to be able to play thru the moves.)

[E76: King's Indian: Four Pawns Attack: Lines specific to 6 Nf3 move-order]

(Eric - I've had many tough and exciting games against the mighty Joe Weber over the years, mostly losses. This was one I managed to win against Joe, and by far the prettiest.) **1.c4 Nf6 2.Nc3 g6 3.e4 d6 4.d4 Bg7 5.f4 0-0** [5...c5= keeps the balance.] **6.e5** [6.Nf3+] **6...Nfd7= 7.e6 [D]** (Next Col.) (Text cont. next col.)

Position after 7.e6 (From prev. col.)



(Cont. from prev. col.) (Eric - Not 100% sound, but not totally crazy either. My kind of opening move!) [7.Nf3= c5 8.exd6 exd6 9.d5 Re8+ 10.Be2 Nb6 11.0-0 Bg4 12.h3 Bxf3, etc... Oliveira,I (1740)-Santos Filho,T (2090) Rio de Janeiro 2015 1-0 (47); 7.Be3 c5 8.dxc5 dxe5 9.fxe5 Nxe5 10.Qxd8 Rxd8 11.Nd5 Nbc6 12.Rd1 Bf5, etc... Bartha,S (2215)-Sidhoum,J (2150) Creteil 1983 1-0 (45)] **7...fxe6-+ 8.Nf3** [Black is clearly better.] **8...c5! 9.d5N** [9.Be3-+ was necessary.; 9.dxc5 Nxc5 10.Be2 Qb6 11.Qc2 Nc6 12.Be3 Bd7, etc... Jaouen,A (1499)-Garonzi,M (1977) Orsay 2008 0-1 (32)] **9...e5** [9...exd5-+ aiming for ...d4. 10.cxd5 Na6 11.Bxa6 bxa6] **10.g3** [Better is 10.Ng5 Nf6 11.Bd3] **10...exf4** [Better is 10...Qa5 11.Bd2 exf4 12.gxf4 Na6] **11.Bxf4 [D]**



11...Ne5 (Eric - On 11... e5 12.dxe6 Black has several 12th move options: 12.... Re8, 12.... Nb6, 12.... Ne5. I felt White's position was active enough to meet any of them.) [11...Nf6-+ 12.Bg2 Nbd7] **12.Be2?** [12.Bxe5!= and White stays safe. 12...dxe5 13.Bg2] **12...Qb6? [D]** (p.5) [12...Nxf3-+ 13.Bxf3 Bd4] **13.Bxe5?** (Eric - But not 13.Qd2?? Nxf3+ 14.Bxf3 g5, winning material.) (Text cont.p.5)

Position after 12...Qb6? (From p.4.)



(Cont. from p.4) [13.Nxe5= and White is okay. 13...dxe5 14.Be3] **13...dxe5** [Better is 13...Bxe5+- 14.Nxe5 Qxb2] **14.Qd2** [14.0-0!=+] **14...Bg4?** [D]

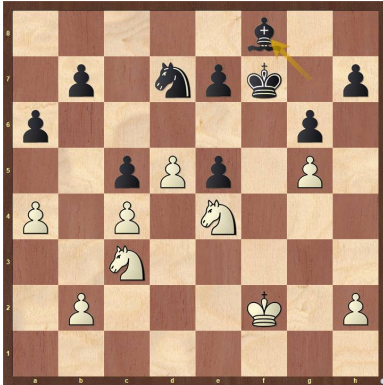


(Eric - This surprised me a bit. I thought the Bishop would go to either f5 or h3.) [14...e4!+- keeps the pressure on. 15.Nxe4 Bf5] **15.0-0?** [15.Ng5+- Bd7 16.0-0-0] **15...Nd7** [Black should play 15...Bh3+- 16.Rf2 Nd7] **16.Ng5+= Bxe2** **17.Qxe2 Rxf1+** [17...e4+=] **18.Rxf1+- Rf8** [18...e4+=] **19.Rxf8+** [Better is 19.Rb1] **19...Nxf8** **20.Qf2** [D]

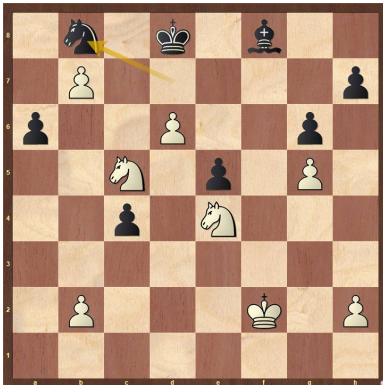


(Eric - I'm still a pawn down but I'm feeling pretty confident.) [20.b3+-] **20...Qf6** (Eric - Black could have created room for his Bishop with 20... e4 but then things get tricky for both sides. For example, play might continue 21.Qf7+ Kh8 22.Nxe4 Qxb2 23.Qxe7) **21.Nge4 Qxf2+** **22.Kxf2** [Endgame KBN-KNN] **22...Nd7** **23.g4** [White has strong compensation.] (Text cont. next col.)

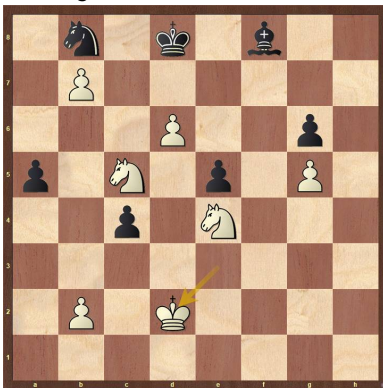
(Cont. from prev. col.) **23...a6** **24.g5** (Eric - This seals in the Bishop and prevents Black from playing Nf6 in the future. White is strategically winning.) **24...Kf7** **25.a4** [25.h4+-] **25...Bf8** [D]



[25...b6!+=] **26.a5!+- b6?** [26...e6+-] **27.Na4 e6?** [27...bxa5 28.Nexc5 (28.Naxc5 Nb6+-) 28...Nxc5 29.Nxc5 Bg7] **28.axb6** [White is clearly winning.] **28...exd5** **29.cxd5 Ke8** **30.b7** [Hoping for Nf6+.] **30...Kd8** [If Black can now play ...Kc7 this consolidates a bit.] **31.d6 c4** **32.Nac5** [White threatens Nxd7 and mate.] **32...Nb8** [D]



33.Ke3 h6 **34.h4** [Better is 34.Ne6+ Ke8 35.Nf6+ Kf7 36.Nxf8] **34...hxg5** **35.hxg5 a5** **36.Kd2** [D]



(Eric - Black is completely tied up. The White King will wade in at its leisure.) [Accuracy: White = 39%, Black = 27%.] **1-0** (Text cont. next col.)

(Cont. from prev. col.)

Copy and paste the link below into your browser:

<https://share.chessbase.com/SharedGames/game/?p=iOLoaRdg9bl5+8urX+ttkDEQ Tm7KziOWSxNyLNrS+BA1n9NzddVy98yIS bsxtLrU>

Game from the NPCC 2005 Fall Class Tournament

Round: 2

Submitted by Eric with his comments and selected Fritz comments [shown thus].

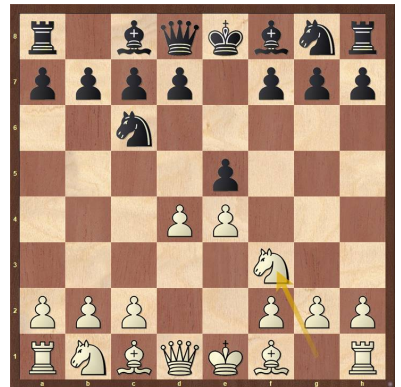
White: Eric Brandt (1816)

Black: Eric Funk (2025)

Date: 11/12/2005

* (Please copy and paste the HTML link at the end of this article into your browser to read the complete commentary and to be able to play thru the moves.)

[C44: Ponziani Opening and Scotch Gambit] **1.e4 Nc6** **2.d4 e5** **3.Nf3** [D]



3...exd4 **4.c3 dxc3** **5.Nxc3 Be7** [D]

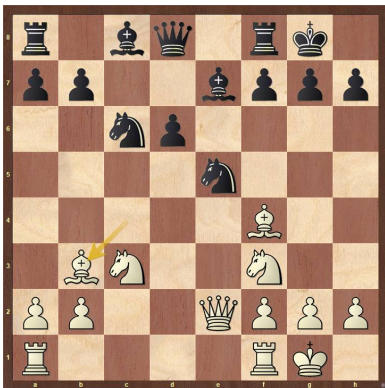


(Eric F. - Timid. Better was Nf6 immediately.) [5...Bc5+-] **6.Bc4+= Nf6** [6...Kf8+-; 6...d6 7.0-0 Nf6 8.Re1 0-0 9.h3 Nd7 10.Nd5 Nde5, etc... Martin Vazquez, J (2085)-Rius, J Vilanova 1993 1-0 (41)] **7.e5!+- Ng4** **8.Qe2N** [D] (p.6) (Eric F. - Not bad, but stronger was 8.Qd5 0-0 9.h3 Nh6 10.Bxh6 with more than enough compensation for the pawn.) [White must play 8.Qd5+- 0-0 9.h3 Nh6 10.Bxh6 gxh6 11.0-0 d6 12.exd6 Bxd6 13.Qh5 (Text cont. p.6)]

Position after 8.Qe2N (From p.5)



(Cont. from p.5) Qf6, etc... ½-½ (21) Tsarouha, M-Kowalska, S Herceg Novi 2005; 8.Bf4 d6 (8...Bc5 9.Ne4 0-0 10.Nxc5 b6 11.Nd3 d5 12.exd6 cxd6, etc... Castaneda, A-Nicorici, N Porto Carras 2013 1-0 (33)) 9.h3 Ngxe5 10.Bxe5 Nxe5 11.Nxe5 dxe5 12.Qb3 0-0 13.0-0 Qd6, etc... Ben Fredj, M-Surovtseva, A Al Ain 2013 0-1 (31)) **8...d6!** [Counterplay!] [Black is fighting back] **9.exd6 cxd6 10.0-0** [10.h3!? Nge5 11.Nxe5 Nxe5 12.Bd5=] **10...0-0 11.Bf4 Nge5** (Eric F. - I'm basically admitting that I don't like my position and I'm giving back the pawn to try to trade down to approximate equality. After something along the lines of 12.Nxe5 Nxe5 13.Bxe5 dxe5 14.Qxe5 Bf6 15.Qg3 Black has the Bishop pair but White has the more active position. If I had a mulligan on the 11th move, I'd probably try to regroup with 11.... Nf6, intending Bg4.) [11...Bf5=] **12.Bb3** [D]

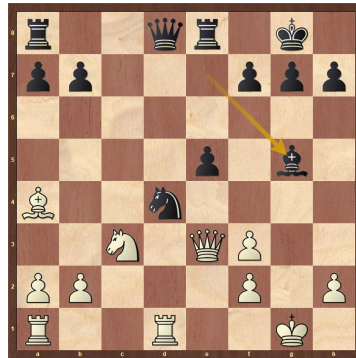


(Eric F. - This is just plain bad. Now Black gets to trade down, keep the extra pawn, and weaken White's Kingside.) [12.Nxe5+= dxe5 13.Rfd1] **12...Bg4+ 13.Qe3** [13.Rad1=+] **13...Bxf3** [13...Nxf3+!+ 14.gxf3 Bh5] **14.gxf3=+ Re8** [14...Qd7=+] **15.Bxe5?** [D] (Next col.) [15.Rad1+= stays ahead.] **15...dxe5** [Less strong is 15...Nxe5 16.f4=+; 15...Bg5!-+ is more deadly. 16.f4 Rxe5] **16.Rfd1** [16.Rad1+ Nd4 17.f4] **16...Nd4+ 17.Ba4** [17.Kh1-+ was necessary.] **17...Bg5** [D] (Next col.) (Text cont. next col.)

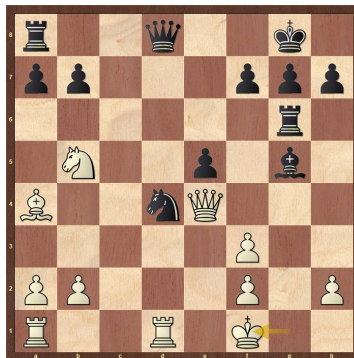
Position after 15.Bxe5? (From prev. col.)



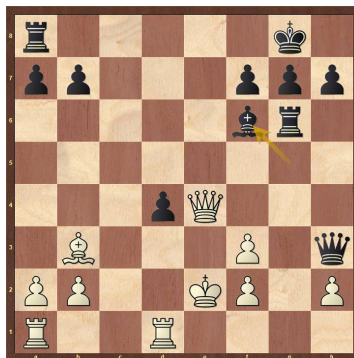
Position after Position after 17...Bg5 (From prev. col.)



(Cont. from prev. col.) **18.Qe4 Re6** [Hoping for ...Bf4.] **19.Nb5?** [19.Ne2 is tougher.] **19...Rg6** [Better is 19...Bf4 and now ...Qh4 would win. 20.Bb3 Rh6 21.Nxd4 Qg5+ 22.Kf1 Rxh2] **20.Kf1?** [D]



(Eric F. - 20.Nxd4 Be3+ 21.Kh1 Bxd4 was the other option.) [20.Nxd4 was the crucial defense. 20...Be3+ 21.Kh1 Bxd4 22.Rac1] **20...Qc8** [Strongly threatening ...Qh3+.] **21.Nxd4 exd4 22.Bb3 Qh3+ 23.Ke2 Bf6?** [D]



(Text cont. next col.)

(Cont. from prev. col.) (Eric F. - I saw White's next move but looked more deeply into the position than he did.) [23...Kf8 24.Qg4 d3+! 25.Kxd3 Rd8+ 26.Ke4 Re8+ 27.Kd3 Qxh2] **24.Bxf7+?** [24.Kd3 is a better chance. 24...Rf8 25.Rac1] **24...Kxf7 25.Qxb7+ Be7 26.Qxa8** [Better is 26.Rxd4 Re8 27.Re4] **26...Re6+** [D]



(Eric F. - The point: White's King can forcefully be herded to b3 or c4 where the Queen, Rook, and Bishop will team up to finish him off. If White tries to give back material with the immediate Qe4 ((or Qe4 at some later point)) to stop or slow down the attack it doesn't help. One illustrative example: 27.Qe4 Rxe4+ 28.fxe4 Qh5+ 29.Kd3 Bf6, intending Qf3+ or Qb5+ or Qxh2 etc. shows the Queen and Bishop easily outclass White's pair of Rooks.) **27.Kd3** (Eric F. - All roads lead to Rome. On 27.Kd2 Bg5+ 28.Kc2/Kd3 Qf5+ and White's King will be driven to b3 or c4 where it will be fatally exposed.) **27...Qf5+ 28.Kc4** (Eric F. - Capturing on d4 doesn't help either: 28.Kxd4 Bf6+ 29.Kc4 Qc2+ 30.Kd5 Re5+ and the rest is easy to work out.) **28...Qc2+ 29.Kb5 Rb6+** [D]



(Eric F. - 30.Ka4 Bb4#.) [Accuracy: White = 20%, Black = 52%.] **0-1**
Copy and paste the link below into your browser:
<https://share.chessbase.com/SharedGames/game/?p=vl+CPedMzSMb4GvfSGowi/Y7kY2b9zil2Z7PiFGJhn61cWGoWK1eS25tf3H5R45>

Game from the NPCC 2005 Winter Robin Tournament

Round: 4

Submitted by Eric with his comments and selected Fritz comments [shown thus].

White: Nigel Mitchell (1925)

Black: Eric Funk (2010)

Date: 2/25/2005

*(Please copy and paste the HTML link at the end of this article into your browser to read the complete commentary and to be able to play thru the moves.)

[A48: 1 d4 Nf6 2 Nf3 g6: Torre, London and Colle Systems] **1.d4 Nf6 2.Nf3 g6 3.e3 Bg7 4.g3 b6** [4...0-0 5.Bd3 (5.Bg2 d5 6.c3 c5 7.0-0 cxd4 8.exd4 Nc6 9.Re1 b5 10.Ne5 Bb7, etc... Tran,D-Nguyen,H (1702) Ho Chi Minh City 2015 1-0 (37)) 5...b6 6.b3 Bb7 7.Nbd2 d6 8.Bb2 a5 9.a4 Nbd7 10.0-0 e5 11.dxe5 dxe5, etc... Phommasone,K-Kakageldyev,A (2400) Guangzhou 2010 0-1] **5.Bg2 Bb7 6.0-0** [6.c4 e6 7.0-0 d6 8.Nc3 Nbd7 9.Re1 Ne4 10.Qc2 Nxc3 11.bxc3 0-0, etc... Krutikov,A (2114)-Guenther,T (2080) Berlin 2004 1-0 (58)] **6...0-0 7.Nbd2 c5 8.c3 [D]**



[The position is equal.] **8...d5 9.Ne5 Nbd7 10.Ndf3 Qc7 11.Bd2 Rad8 [11...Ne4=+] 12.Rc1 Nh5 [D]**



13.Nxd7 Qxd7 14.Qb3 Ba6 15.Rfe1 Bd3 [15...Nf6=] (Text cont. next col.)

(Cont. from prev. col.)

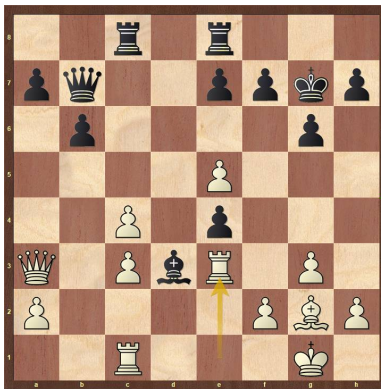
16.Qa3 [16.Qd1=+] 16...c4 [16...Be4=] 17.Ne5 [D]



[17.b3=+] **17...Bxe5-+ 18.dxe5 Ng7 19.e4 dxe4 20.Bh6 [20.Bxe4= remains equal. 20...Bxe4 21.Rxe4 Qxd2 22.Rce1] 20...Qb7 [20...f5=+] 21.b3 Rfe8 [D]**



[21...b5=+] **22.Bxg7 [22.bxc4=+ Ne6 23.Rcd1] 22...Kxg7 23.bxc4 Rc8 24.Re3 [D]**



[Threatens to win with Rxd3!]

24...Red8 25.Rd1 (Text cont. next col.)

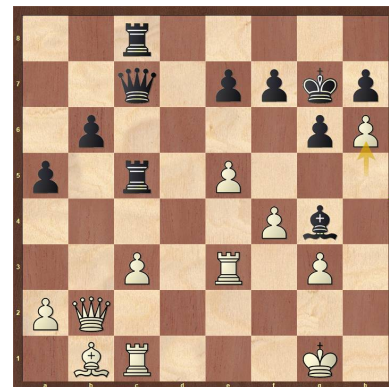
(Cont. from prev. col.) [Black must now prevent Rxd3!] **25...Bxc4**

26.Rde1 [26.Rxd8 might work better. 26...Rxd8 27.Qc1] 26...Rc5-+

27.Bxe4 Qc7 28.Bb1 Be6 [Better is 28...Rd2 29.Qc1 Rcd5] 29.h4 Rdd5 [Better is 29...h5 30.Qb2 Rcd5] 30.f4 [D]



[30.h5 keeps fighting.] **30...Rd8 31.h5 Rc8 [Less strong is 31...gxh5 32.f5-+; Better is 31...Rd2 32.Qc1 Qd8 33.h6+ Kg8] 32.Rc1 a5 [Much less strong is 32...gxh5 33.Qa4-+; Better is 32...Qd7 33.Qb2 Rd5] 33.Qb2 Bg4? [33...b5 34.a3 Rc4] 34.h6+ [D]**

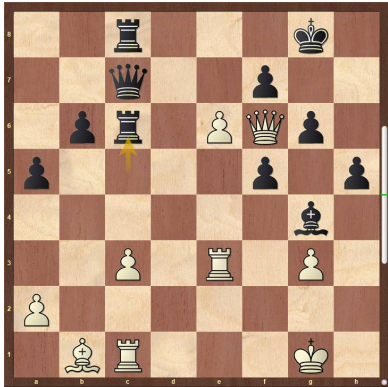


[Better is 34.hxg6 hxg6 35.Be4] **34...Kxh6 35.Qh2+ Kg7 36.Qh4 h5 37.Qg5 e6 [D]**



(Eric - This is the move I chose to forestall any ideas White had about pushing his pawn to f5 - a move he plays anyway. Probably safer and more accurate was 37... b5, and now on (Text cont. p.8)

(Cont. from p. 7) 38.f5 Rxe5 39.f6?? exf6 or 38.f5 Rxe5 39.Qf4 Rxe3, Black has everything covered.) **38.f5 exf5 39.Qf6+ Kg8 40.e6 Rc6 [D]**



(Eric - Here I thought Nigel might try to keep the tension with something like 41.exf7+ Qxf7 42.Qd4 when White is still two pawns down but has enough heavy artillery still on the board to keep Black on his toes. On 41.Rce1 I intended to simplify: 41.Rce1 f4 42.gxf4 Rxe6 43.Rxe6 Bxe6 44.Bxg6 Qxc3 45.Qxc3 Rxc3 46.Bxh5 Bxa2, keeping the two-pawn advantage.) [Aiming for ...Rxe6.] **41.Bc2** (Eric - This changes everything. With 45 extra minutes added to my clock for the second time control I can take my time to make sure the following Rook sac works.) [Better is 41.Rce1] **41...Rxe6 [D]**



42.Rxe6 [And now Re5 would win.] **42...Qxg3+** [And not 42...fxe6 43.Qxg6+ Kf8 44.Qf6+ Kg8 45.Qg6+ Kh8 46.Qh6+ Qh7 47.Qxe6=] **43.Kf1** [and the idea Rce1! leaves White hopeful.] **43...Bh3+ [D]** (Next col.) (Eric - The text wins by force but in hindsight, 43...Qf4+ looks quicker.) **44.Ke2 fxe6 45.Qxe6+ Kg7 [D]** (Next col.) (Eric - And here's the point: White can't draw by perpetual check and continuing three pawns down after 46.Qe7+ Kh6 47.Qe3+ Qxe3+ was not an option. White might as well take the Rook and get mated.) (->...Qg2+) **46.Qxc8** (Text cont. next col.)

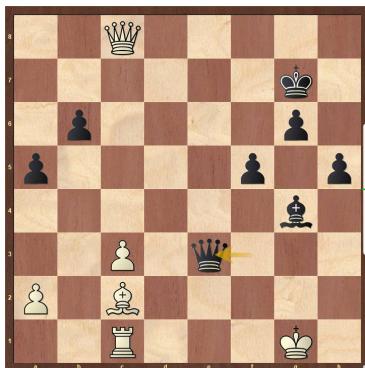
Position after 43...Bh3+ (From prev. col.)



Position after 45...Kg7 (From prev. col.)



(Cont. from prev. col.) [White wants to play Qe6.] **46...Bg4+** [With attack!] [Black has strong attack.] **47.Kf1 Qf3+** [Better is 47...Qf4+ 48.Kg2 Qd2+ 49.Kg1 Qe3+ 50.Kg2 Bf3+ 51.Kg3 Be4+ 52.Kh2 Qe2+ 53.Kh3 Qg4+ 54.Kh2 Qg2#] **48.Kg1** [Hoping for Qc7+.] **48...Qe3+ [D]**



[Black has strong compensation.] **49.Kg2** [intending Qd7+.] **49...Bf3+ [D]**



(Text cont. next col.)

(Cont. from prev. col.) [Accuracy: White = 77%, Black = 89%.] [49...Qxc1? 50.Qb7+ Kh6 51.Bb3-+] **0-1**

Copy and paste the link below into your browser:

<https://share.chessbase.com/SharedGames/game/?p=RACV2uKK4sm1qk77LQnb0dDaMz2GH8sL24RZ/8a7we8H4zT6OXhccvwVX4HeqtOS>



Sachin Singhal vs. Eric Funk
NPCC 4TH Annual Touch-Move Blitz
Championship - August 24, 2012



Joe Mucerino vs. Eric Funk,
(Tom DiMarco observing)
2020 Winter Robin



Joe Kennedy playing Eric Funk in the
2012 Winter Robin.

This concludes this issue.
More games in next issue.

Allentown Center City Chess Club Offer (from Eric C. Johnson): "For any of our events -- If three or more Lansdale players carpool together -- the designated driver plays for free!"

<http://www.freewebs.com/allentowncentercitychessclub>