

~ En Passant ~

Newsletter of the North Penn Chess Club, Lansdale, PA – Winter 2020, Part 2
E. Olin Mastin, Editor

North Penn Chess Club
500 West Main Street
Lansdale, PA 19446
www.northpennchessclub.org
(215) 699-8418 donfunk@msn.com

This issue features NPCC games played in the 2020 41st Winter Robin Rounds 1, & 2 thru 6 (except 5). The purpose of these newsletters is to include as many games as possible by NPCC players irregardless of the strength of the participants. Thanks to all for submitting games!

Game from the NPCC 2020 41st Winter Robin Tournament

Round: 1

Submitted by Olin with my comments and selected Fritz comments [shown thusly].

White: Olin Mastin (1550)
Black: Bernie Overly (1567)
Date: 1/10/2020

*(Please copy and paste the HTML link at the end of this article into your browser to read the complete commentary and to be able to play thru the moves.)
[C00: French: Unusual White 2nd moves]
1.Nf3 Nf6 2.g3 e6 3.Bg2 d5 4.0-0 c5 5.d3 Be7 6.Nbd2 Nc6 7.Re1 0-0
(Text cont. next col.)

(Cont. from prev. col.) 8.e4 Re8
9.e5 [D]



9...Nd7 10.Qe2 Qc7 [10...b5=+]
11.Nf1 [11.c4=] 11...b6 [Better is 11...b5=+] 12.c3 [12.Bf4 Nf8 13.h4 Ng6 14.Bd2 Bf8 15.c3 Ba6 16.h5 Nge7, etc... 1-0 (26) Agudelo,A (2275)-Ordonez Gonzalez,G (1909) lbage 2013] 12...Bb7 [12...h6=+ is more appropriate.; 12...Ba6 13.Bf4 Rac8 14.h4 b5 15.Rac1 c4 16.d4 b4 17.Ne3 Bb5, etc... Martinovic,S (2500)-Krems,S Weilburg 1996 1-0 (46)] 13.Bf4 [13.d4=] 13...Nf8 [13...b5=+] 14.Bg5N [14.h4 Rad8 15.h5 Qc8 16.N1h2 f5 17.exf6 Bxf6
(Text cont. next col.)

(Cont. from prev. col.) 18.Ng4 Re7,etc... Semenov,D (2166)-Gasnov,D Kiev 2000 1-0 (50)] 14...Ng6 [D]



[Better is 14...Bxg5 15.Nxg5 Red8] 15.Bxe7 Qxe7 [15...Ngxe7= 16.d4 h6] 16.h4 [16.d4+=] 16...Qc7 [16...h6=] 17.d4 [17.h5!+=] 17...Nge7= 18.N1h2 c4 [18...a5=] 19.Ng4 [19.b4+=] 19...Kh8 [19...Nf5= keeps the balance.] 20.Ng5+- Ng8 [Better is 20...Nf5] 21.Qc2 [D] (p.2) 21... g6 22.h5 h6 23.Nh3 gxh5 24.Nh2! [D] (p.2) 24...Qe7 25.Bf3 [25.Nf3+-] 25...f5? [25...h4+-] 26.exf6? [26.Bxh5+- is more deadly. Black must now prevent Nf4. 26...Rec8 27.Nf4]
(Text cont. p.2)

***Tournament has been postponed!**

NPCC 2020 March Game/100; Inc +10
March 13th, 20th, 27th & April 3rd.
A 4 Round Swiss in 16 player sections or portions thereof

Registration: 7:00 to 7:45 PM. Please arrive no later than 7:45 PM to register.

Entry fee: North Penn members = \$20 Non- members = \$25.

One 1/2 point bye permitted for rounds 1,2 or 3. Must notify TD 1 day before round. Must play round 4 to be eligible for prize.

Prizes (Based on minimum of 16 Entrants): 1st Place = \$100.
2nd Place = \$80. Under 1600 = \$50. Under 1400 = \$40.
Under 1200 = \$30.

Increment Time Control is also known as "Fischer Time".



NPCC Schedule March 2020

DATE	ROUND	EVENT	ROUND TIMES	TYPE
13 Mar	1 of 4	March 2020 G100 Swiss Tournament	<u>Registration: 7:00 to 7:45 PM</u> <u>- Games start at 8:00 PM -</u> <u>Please arrive no later than</u> <u>7:45PM to register.</u>	4-Round Swiss in 16 player Sections or <u>portions</u> thereof.
20 Mar	2 of 4	Continued	8:00 PM	
27 Mar	3 of 4	Continued	8:00 PM	
3 Apr	4 of 4	Continued	8:00 PM	

TIME CONTROL	ENTRY FEE	PRIZES	COMMENTS
G/100;+10 (i.e. Incremental Time Control)(Also known as Fischer Time)	\$20 NPCC Members / \$25 Non-Members;	<u>PRIZES: (Based on minimum of 16 Entrants):</u> <u>First Place = \$100</u> <u>2nd Place = \$80</u> <u>Under 1600 = \$50</u> <u>Under 1400 = \$40</u> <u>Under 1200 = \$30</u>	One 1/2-point BYE permitted in Round 1, 2, or 3. Must notify TD at <u>least one day</u> prior to round. Must play Round 4 to be eligible for prizes.

Note: Tournament has been postponed!

Position after 21.Qc2 (From p.1)



Position after 24.Nh2! (From p.1)



(Text cont. next col.)

(Cont. from p.1) 26...Qxf6?
[26...Nxf6+- 27.Nf4 Qf7] 27.Bxh5+-
Re7 28.Ng4 Qf5 [D]



29.Qxf5 exf5 30.Rxe7 Ncxe7
31.Ne5 Nf6 32.Bf3 Kg7 33.Re1
Re8 [D] (Next col.) 34.Nf4 [White
should try 34.Nxc4!+- Strongly
threatening Nd6. 34...dxc4 35.Bxb7]
34...Neg8 35.Nh5+? Kh7?
[35...Nxf5+- 36.Bxh5 Re7] 36.Kf1
Nxf5 37.Bxh5 Rf8 [Better is
37...Re6 38.Bf7 Rd6] (Text cont. next
col.)

Position after 33...Re8 (From prev.
col.)



(Cont. from prev. col.) 38.Re3
[White should play 38.Ng6+- Rf7
39.Re5] 38...Kg7 39.Ng6 Rf7 40.Nf4
Re7 41.Bf3? [D] (p. 3) 41...Rxe3=
42.fxe3 [42.Nh5+ is interesting.
42...Kf7 43.fxe3 Nf6 44.Nxf6 Kxf6 45.Kf2]
42...Kf6? [42...Nf6= and Black has
nothing to worry.] 43.Bxd5 Bxd5
44.Nxd5+- (Text cont. p.3)

Position after 41.Bf3? (From p.2)



(Cont. from p.2) [Endgame KN-KN]
44...Ke6 45.Nf4+ Kd6 45...Kf7+- 46.Kf2
Nf6] 46.Kf2 [46.Nh5+-] 46...Ne7? [D]



[46...Nf6+- was necessary. 47.Kf3 b5]
47.Kf3 Ng8 48.e4 fxe4+ 49.Kxe4 Ne7
50.d5 b5 51.g4 a5 [51...a6 is a better
defense. 52.Kd4 a5] 52.Kd4 [D]



52...Ng8 [Now ...Nf6 and Black cling on.]
53.Ne6 Nf6 54.Ke3?? [54.Ng7+- avoids
the disaster.] 54...Nxe4+? [D]



cont. next col.)

(Text

(Cont. from prev. col.) (Olin - Bernie
offered the draw which I accepted.)

[54...Nxd5+-+ 55.Kd4 Kxe6] 1/2-1/2

Copy and paste the link below into your
browser:

<https://share.chessbase.com/SharedGame/s/game/?p=nkm614z79KaZft0aCnSOLj0hsOpSNrbVat77YgX5iJ585AdH00ANW/rErhryfrBx>

Game from the NPCC 2020

Winter Robin Tournament

Round: 3

Submitted by Joe with his comments (as
edited) and selected Fritz comments
[shown thusly].

White: Joseph Mucerino (2072)

Black: Douglas Kern (1933)

Date: 2/28/2020 (Makeup Date)

* (Please copy and paste the HTML link at
the end of this article into your browser to
read the complete commentary and to be
able to play thru the moves.)

[D12: Slav Defence: 3 Nf3 Nf6 4 e3 Bf5]

1.d4 d5 2.Nf3 Nf6 3.e3 c6 4.c4 Bf5

5.Nc3 e6 6.Be2 Nbd7 [D]



7.Nh4 Bg6 [Black should try 7...dxc4=
8.Nxf5 exf5] 8.Nxg6 [8.Bd2+= is superior.]
8...hxg6= 9.0-0 [D]



(Joe - I would be licking my chops if I had
the open h-file down towards White's
king, but the computer says that this is
okay. In the few games where I have been
brave enough to try this with White, I have
done okay. (Text cont. next col.)

(Cont. from prev. col.) Deep down
however, I do have some doubts.)

[9.h3+-: 9.Qc2 Bd6 10.Bd2 Rc8 11.e4
dxe4 12.Nxe4 Nxe4 13.Qxe4 Nf6, etc...
Giardelli,S (2425)-Soppe,G (2460) Bue-
nos Aires 1993 1/2-1/2 (33)] 9...Bd6

10.g3 (Joe - The computer prefers
10.h3, but I do not agree. White's
bishop can come to g2, and also, 10.h3
would give Black a hook with which to
work after a future ...g5 and ...g4.) [
White should play 10.h3+=]

10...dxc4N [10...Qe7=+ 11.f4 Bb4
12.Qb3 0-0 13.Nd1 dxc4 14.Qxc4 Rfc8
15.Bf3 b5, etc... Pascua,H (2447)-
Ahmed,A (2297) Al Ain 2015 0-1 (36);
10...Ne4 11.Nxe4 dxe4 12.Qe1 Nf6
13.f3 Qe7 14.Qf2 Rd8, etc... Joppien,A
(2091)-Boldt,A Kiel 2002 1-0] 11.Bxc4
Nb6 12.Be2 Nbd5 13.Bf3 Nxc3
14.bxc3+- [D]



(Joe - Black just made three Knight
moves in a row to strengthen White's
center. I didn't understand that.)

14...e5 (Joe - Now White has to come
up with a plan. White would like to
play something like 15.dxe5 Bxe5

16.Ba3 and try to prevent Black from
castling kingside; however, obviously,
Black can swap Queens immediately
and capture on c3 to boot. I wanted to
force Black to castle queenside ((or
stay in the center)) because the Bishop
on f3 points down towards the
queenside, and White can line up his
heavy pieces on the queenside. I
couldn't prevent Black from castling
queenside, but I did decide to attack
on the queenside.) 15.Rb1 (Joe -
15.Qb3 is too easily met by 15...Qb6.)
15...Qc8 16.Bg2! (Joe - Black's last
move was threatening 16...Qh3.)

16...0-0 17.c4?! (Joe - This is swap-
ping plans a bit. I wanted to play d5
and either capture on c6 to open up
Black's queenside, or have Black cap-
ture on d5 and give myself a passed
(Text cont. p.4)

(Cont. from p.3) Pawn and put my other Rook on c1; however, White should play 17.Qb3 continuing to attack on the queenside.) 17...Rd8 18.Qb3 Rb8+= 19.Rd1 Qf5 20.Bb2 e4 21.Ba3 [D]



21...Bc7 (Joe - I think Black should have traded Bishops.) [21...Bxa3+= 22.Qxa3 a6] 22.Rd2 (Joe - Protecting f2 in the event of ...Ng4, and also, heading to b2.) 22...Nh7?! (Joe - The right idea (heading to f3), but I think this is a bit too slow. The computer says 22...b5.)

23.Rdb2 Re8 [D]



(Joe - I liked this move because it stopped my subtle idea. If instead Black had played 23...Ng4, White had 24.Qc2! Now if:

- a) 24...Nf3+ 25.Bxf3 Qxf3 26.Rxb7 White has crashed through on the queenside.
- b) 24...Nf3+ 25.Bxf3 exf3 26.Qxf5 gxf5 27.Rxb7 White again crashes through.
- c) 24...b6 25.Be5 Re8 26.Bxg5 Qxg5 27.Bxe4 and White wins a pawn, although there are Bishops of opposite colors.)

24.Qa4 [With initiative!] [White has good play.] 24...Ng5 (Joe - This will cost Black a pawn. Understandably, Black did not want to play the computer's recommendation of 24...Qc8.) [24...Qc8!+=]

25.Rxb7 Nf3+ 26.Bxf3! exf3 [D]

(Next col.) 27.Qd1! (Joe - Forced or Black mates.) 27...Rbc8? (Joe - Black should try to limit the Rook's scope with 27...Rxb7 28.Rxb7 Bb6. 29.c5 allows 29...Qc8.) [27...Rxb7+- 28.Rxb7 Bb6] (Text cont. next col.)

Position after 26...exf3 (From prev. col.)



(Cont. from prev. col.) 28.d5? (Joe - White loses about half of his advantage. The computer says to simply capture on a7. I was afraid that Black may play something like 28...Kh7 29...Rh8 30...Kg8 31...Qh5. If 32.h4, then 32...g5. With that in mind, I didn't want to waste time capturing an unimportant Pawn.) [Better is 28.Rxa7+- Strongly threatening Bc5. 28...Rb8 29.Rb3 Rxb3 30.axb3] 28...cxd5= 29.cxd5 Rxe3?? [D]



(Joe - This does not work. Black should play 29...Red8.) [29...Re5= and Black is okay.] 30.fxe3+- (Joe - In this position, the computer says that the two best moves for Black are 30...Bb6 and 30...Bxg3. Which one would you pick?) 30...Bb6 (Joe - This is the stronger option, by about half a Pawn. At the board, I was afraid of 30...Bxg3. Let's look at a line with that. 31.hxg3 Rc2 32.Qxc2 ((you can throw in 32.Rb8+ first if you like)) Qxc2 33.R7b2 f2+ 34.Kf1 Qd3+ 35.Kxf2 Qxd5 ((not 35...Qxa2 because of 36.Rb8+ wins the Queen because 36...Kh7 allows 37.Rh1 mate. Please note that 35...Qxd5 guards the h1 square)) 36.Bc5 ((again the Bishop is immune to capture)) followed by 37.Bd4, with a technical win for White.) 31.R7xb6 (Joe - Best. When you are up material, do not be afraid to give some of it back to simplify things. I played a game many years ago against a (Text cont. next col.)

(Cont. from prev. col.) lower rated player and I was down two Exchanges with no compensation. My opponent could have traded off a set of pieces, but he would have lost a single Pawn if he had done so. He decided to not simplify things and hang on to his Pawn, and I improved my King, my pieces, turned the game around, and won.) 31...f2+ (Joe - Again best; 31...axb6 is second best; but if 31...Rc2?? 32.Rb8+ and 33.Kh1 and White is completely winning.) 32.Kf1?? (Joe - Two question marks may seem a bit harsh, but I think this move changes the result of the game. 32.Kg2 is better because Black no longer has ...Qh3+.) 32...axb6 [D]



(Joe - There is nothing better for Black to do.) 33.Rc1! [Black must now prevent Rxc8+.] [But not 33.Rxb6? Qe4+-] 33...Qh3+ 34.Kxf2 Qxh2+ 35.Kf3 Qh5+ 36.Kg2 [D]



36...Rxc1 37.Qxc1 [Qc8+ is the strong threat.] 37...Qxd5+ 38.Kf2 Qxa2+ 39.Bb2 Qe6 40.Qc3 f6 41.Qd3 Qf5+? [D]



(Text cont. p.5)

(Cont. from p.4) Joe - The ultimate question is: Does this draw or lose for Black? At the board I thought that this would be a difficult win for White, especially with time ticking down. However, after analyzing a bit with Stockfish 7, I think this loses.) **42.Qxf5** (Joe - I don't think White can win with the Queens still on the board.) **42...gxf5** [Endgame KB-KP] **43.Kf3 Kf7 44.Kf4 Ke6** (Joe - Correct. After the game, Doug though 44...Kg6 was better, but Black loses a pawn after 45.Bd4 b5 46.Bc3, and either the b or f5 Pawn will drop off.) **45.e4??** (Joe - Believe me, I really did not want to trade off one of my two remaining Pawns; but I was afraid after 45.Bc3 g5+ and my King would not be able to penetrate Black's position; however, after 45.Kf3, what does Black do? The computer line is 46...b5 47.Bd4 b4 48.Bc5 b3 49.Bd4 Kd5 50.Bxf6 Kc4 51.e4 fxe4+52.Kxe4 with an easy Win.) (Joe - If Black defends with 49...Ke7 50.g4 and now:

- a) 50...fxg4+ 51.Kxg4 Kd6 52.e4 Ke6 53.Bb2 Ke7 54.Kf5 or
 - b) 50...Ke6 51.gxf5+ Kxf5 52.e4+ and again White's King will land on f5.)
- [45.Bd4+~] **45...fxe4= 46.Kxe4 [D]**



[Black should prevent g4. KB-K3P] **46...b5 47.Bc3** [With the idea Bd2.] **47...f5+ 48.Kf4 g6 49.Kg5?** (Joe - After this move the game is drawn for sure. I will show one last computer line: 49.Ke3. The computer says White has a 0.56 advantage. 49...Kf7 50.Kd3 Ke6 51.Kd4 Kf6 52.Kc5+ Kg5 and Black will be able to trade off White's last Pawn.) (Joe - Therefore, White has a slight advantage, but cannot do anything with it.) **49...Kd5! 50.Kxg6 Ke4!** [D] (Next col.) **51.Kg5 Kf3 52.Kh4 Ke4 53.Kh3 Kf3** [53...f4=] **54.Bb4** [54.Kh4+~] **54...Ke4 [D]** (Next col.) [The position is equal.] **55.Kg2 f4 56.g4 f3+!** **57.Kf2 Kf4 58.g5 Kxg5 59.Kxf3 [D]** (Next col.) ½-½
(Text cont. next col.)

Position after 50...Ke4! (From prev. col.)



Position after 54...Ke4 (From prev. col.)



Position after 59.Kxf3 (From prev. col.)



(Cont. from prev. col.)

Copy and paste the link below into your browser:

<https://share.chessbase.com/Share dGames/game/?p=OzExRXNLVz1Hw XEfmU/d9Vst7c28iX4+dxJc4cyw++He71LKBVAD/6qwpb8tugA5>

Game from the NPCC 2020 Winter Robin Tournament Round: 3

Submitted by Olin with my comments and selected Fritz/*Stockfish comments [shown thusly].
(Text cont. next col.)

(Cont. from prev. col.)

White: Olin Mastin (1550)

Black: Stan Ward (1603)

Date: 1/24/2020

*(Please copy and paste the HTML link at the end of this article into your browser to read the complete Stockfish comments and to be able to play thru the moves.)

[A08: King's Indian Attack] **1.Nf3 d5 2.g3 Nf6 3.Bg2 c5 4.d3 Nc6 5.0-0 e5 6.Nbd2 Be7 7.e4 [D]**



(Olin - The first seven moves for White of the KIA are always the same. Makes it easy!) **7...d4** [7...0-0=+] **8.Re1** [8.Nc4=; 8.h3 Rb8 9.Nc4 Qc7 10.Ncxe5 Nxe5 11.Nxe5 0-0 12.Nc4 Qd8, etc... Orel (2320)-Cepon,D (2305) Slovenia 1992 1-0 (53)] **8...Bg4** [8...0-0=+] **9.h3= Bxf3N** [9...Be6=+; 9...Bd7 10.Nh2 Qc8 11.g4 0-0 12.Ndf1 h6 13.f4 exf4 14.Bxf4 g5 15.Bg3 Be6, etc... 1-0 (23) Asensio Graells,R (1595)-Carraminana Puig,J (1790) Santa Eugenia 2013] **10.Nxf3** [White is slightly better.] [10.Qxf3 feels hotter. 10...0-0 11.Qe2 Re8 12.a4 Nd7 13.f4] **10...0-0 11.Qe2 Rc8 12.Bd2** [Better is 12.Nd2] **12...Qb6 13.Rab1 Nd7 [D]**



(Olin - I wondered if Stan's idea behind this Knight move might have been to have an open f-file. I decided to play my Bishop to g5 to challenge it.) [13...Qc7= feels stronger.] **14.Bg5** [14.h4+=] **14...f6?** (Text cont. p.6)

(Cont. from p.5) (Olin - I "awarded" a "?" to Stan for this move, because it now opens his g8-a2 Diagonal to vulnerability.) [14...Bxg5+= keeps the upper hand. 15.Nxg5 Qd8] **15.Bd2+-** (Olin - Mission accomplished!) **15...Na5** [15...Qa6+=] **16.c3 c4** [Better is 16...Rc7+=] **17.h4** [D]



(Olin - I want the h3-c8 Diagonal for my Bishop!) [17.cxd4+- Rfd8 18.d5] **17...cxd3+=** **18.Qxd3 Nc5** **19.Qe2 d3=** **20.Qd1** [Aiming for b4.] **20...Nc4** **21.b4!?** **Ne6** **22.Bh3** [D]

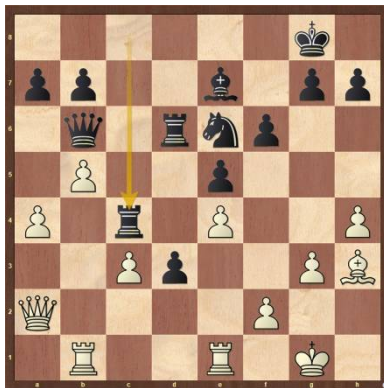


(Olin - The first pin!) **22...Nxd2** **23.Qxd2+-Rfd8** **24.a4** [White should try 24.Re3+-] **24...Rc4?** [D]



[24...Kf7!+=] **25.Qa2!+- Rdc8?** [25...Rxc3 26.a5 Qc7 27.Bxe6+ (27.Qxe6+ Kh8+-) 27...Kh8] **26.Nd2 R4c6** (Olin - Double pin on the e6 Knight!) **27.b5 Rd6** **28.Nc4 Rxc4** [D] (Next col.) (Olin - Only choice by Black!) **29.Qxc4 Kf7** **30.Rbd1 d2** [Better is 30...Qc5 31.Bxe6+ Rxe6 32.Qxd3 Rd6] **31.Re2** (Text cont. next col.)

Position after 28...Rxc4 (From prev. col.)



(Cont. from prev. col.) (Olin - Most prudent move. It is essential to remove that d2 Pawn!) **31...Qc5** **32.Bxe6+ Rxe6** **33.Qxc5 Bxc5** **34.Rexd2** [D]



34...Rb6 [Better is 34...Re7 35.a5 b6 36.axb6 axb6] **35.Rd7+ Kg6** (Olin - Stockfish doesn't even consider this move for the Black King!) [*Stockfish 9: 1) 35...Ke6 36.c4 a5 37.Rxg7 f5 38.Rd5 Bf8 39.exf5+ Kxf5, etc...; Stockfish 9: 2) 35...Ke8 36.Rxg7 a6 37.Rdd7 axb5 38.Rc7 Kf8 39.Rgd7 Re6, etc...] **36.Kg2** (Olin - Moving my King off a dark square controlled by the c5 Bishop.) **36...a6** **37.c4** (Olin - I wanted my Pawns off the dark squares as well!) **37...Bd4!?** [D]



(Olin - Interesting move by Stan. I never considered it! Now my Rooks are disconnected!) **38.f4 axb5** (Text cont. next col.)

(Cont. from prev. col.) **39.f5+ Kh6** **40.Rb1?!** (Olin - Not a good decision. Allows too much counterplay by Black.) [Better is 40.cxb5 Strongly threatening Rc1. 40...Bc3 41.Rc1] **40...Rc6** [Better is 40...bxa4 41.Rxb6 Bxb6 42.Rxb7 Bd4] **41.Rxb5 Rxc4** **42.Rxb7 Rxa4** [*Stockfish 9: 1) 42...Rc2+ 43.Kh3 Rb2 44.Rxb2 Bxb2 45.a5 Bd4 46.a6 g6, etc...; * Stockfish 9: 2) 42...Kh5 43.Rxg7 h6 44.Rb3 Be3 45.Kh3 Rxe4, etc...] **43.Rxg7** [D]



[White mates.] **43...Ra2+** **44.Kf3** **Ra3+** **45.Kg4** [D]



(Olin - Stan resigns in lieu of Rxh7#!) **1-0**

Copy and paste the link below into your browser:

<https://share.chessbase.com/SharedGames/game/?p=GZW/tmt744HsJ5Z1D/WPvXwk9I3Gg/nSZ9rfYmkQwaf1hv2V/NL6w8opZXGLwv5CAv/>

Game from the NPCC 2020 Winter Robin Tournament Round: 4

Submitted by Joe with his comments (as edited) and selected Fritz comments [shown thusly].

White: Gary Marshall (1800)
Black: Joseph Mucerino (2121)
Date: 2/15/2020

[A22: English Opening: 1...e5 2 Nc3 Nf6] (Text cont.p.7)

(Cont. from p.6) 1.c4 e5 2.g3 Nf6
3.Bg2 d5 [D]



4.cxd5 Nxd5 5.Nc3 Nxc3 6.bxc3 Bc5
7.e3 [7.Nf3 feels hotter. 7...Nc6 8.0-0
0-0 9.d3 Rb8 10.Qa4] 7...0-0 [D]



8.Ne2 (Joe - White should play 8.d4.
Gary didn't get that move in and it cost
him.) [8.Nf3+]=] 8...Nc6 (Joe - Black
should not hesitate and play 8...Qd3. I
thought that this would be a bit of a
waste of time after 9.Bb3 and 10.Nc1 or
9.Bf1) [8...Qd3=-; 8...Kh8 9.d4 Bd6 10.c4 c5
11.0-0 f5 12.dxe5 Bxe5 13.Rb1 Qc7, etc...
Iagar,R (2141)-Camarero Izquierdo,J
(1935) Madrid 2010 ½-½ (36); 8...Bf5
9.Bxb7 Nc6 10.Bxa8 Qxa8 11.d4 exd4
12.cxd4 Bb4+ 13.Bd2 Bxd2+, etc...] 9.0-0
[9.d4+-] 9...Qd3= [D]



(Joe -
Now this move is much more powerful,
because the King no longer protects the
knight or the pawn on d2.) 10.Bb2N (Joe
- The computer says that this is the best
move in the position.) [10.Kh1 Be6
11.Ng1 Bc4 12.Re1 Rad8 (Text cont.
next col.)

(Cont. from prev. col.) 13.Bf1
Qd5+ 14.Bg2 Qd3, etc... Tasnadi,G-
Szilagyi,Z Zalakaros 1993 ½-½ (61)]
10...Rd8 11.Bxc6 (Joe - This simpli-
ly weakens the light squares around
White's King.) [11.Nc1!= Qxd2
12.Qxd2 Rxd2 13.Nb3 Rxb2 14.Nxc5]
11...bxc6+- 12.Nc1 Qd5 [D]



(Joe - I didn't want to cash in with
12...Qxd2 now that the light squares
have been weakened.) [Black should
try 12...Qxd2 13.Qxd2 Rxd2] 13.d3
(Joe - White needed to try 13.Qh5.)
[13.Qh5+-] 13...Bh3+- 14.e4 Qe6
[14...Qd7+- White must now prevent
...Bg4. 15.Nb3 Bb6] 15.Re1 [D]



[15.Nb3+- Bxf1 16.Nxc5]
15...Bg4! [With attack] [Black goes
for the King.] 16.Qb3? (Joe - White
should protect f2 with 16.Qd2.)
[16.Qd2] 16...Qh6? (Joe - Devastat-
ing was 16...Qf6, where White should
have to play 17.Qc2 and later Qe2
and give up an exchange.) [16...Qf6-
+ is more deadly. 17.Qc2 Rab8]
17.h4? (Joe - 17.d4 was necessary.)
[17.d4+-] 17...Qd2 18.Rf1 Rab8
[D] (Next col.)

Copy and paste the link below into
your browser:

<https://share.chessbase.com/SharedGames/game/?p=ORb7mUalg+d9qMqNn9v10R2wgAnK0r3u9s849Ux7KOyAwlTJSm3tNH4ZK4XIG4U>

(Text cont. next col.)

Position after 18...Rab8 (From prev.
col.)



(Cont. from prev. col.) 0-1

**Game from the NPCC 2020 Win-
ter Robin Tournament
Round: 6**

Submitted by Olin with my comments and
selected Fritz comments [shown thusly].

White: Olin Mastin (1550)

Black: Jimmy Christensen (1579)

Date: 2/14/2020

*(Please copy and paste the HTML link at
the end of this article into your browser
to read the complete commentary and to
be able to play thru the moves.)

[A05: Réti Opening: 1 Nf3 Nf6] 1.Nf3 f5
2.d3 g6 3.g3 Nc6 4.Bg2 Bg7 5.0-0
d6 6.Nbd2 e5 7.e4 Nf6 8.c3 0-0
9.Re1 [D]



9...Nh5N [9...f4+=; 9...Re8 10.exf5 Bxf5
11.Qb3+ Kh8 12.Qxb7 Ne7, etc... Dralle,F-
Lassan,C Oberhof 1999 0-1 (60)]
10.Nf1? [10.exf5+- Bxf5 11.Qb3+ Kh8
12.Qxb7] 10...f4+= 11.Bd2 [11.b4=
11...Qf6 [11...Qe7+=] 12.h3= [aiming
for g4.The position is equal.] 12...fxg3
13.fxg3 [D] (p.8) 13...h6 [13...Bxh3!=
14.Bxh3 Qxf3] 14.Qe2 [D] (p.8) [White
should play 14.Kh2!+=] 14...g5
[14...Bxh3!+= keeps the upper hand.
15.Bxh3 Qxf3] 15.Kh2 15.N3h2+- Qf7
16.Bf3] 15...Ne7? [15...g4= + stays
ahead. 16.Nh4 Nf4! 17.gxf4 exf4]
16.Ng1? [White must play 16.Nxg5!+-
Nxg3 17.Nxg3 hxg5 (Text cont. p.8)

Position after 13.fxg3 (From p.7)



Position after 14.Qe2 (From p.7)



(Cont. from prev. col.) 18.Qh5
16...Qg6 [16...Qf7=] 17.Bf3 Nf6!
18.Ne3 h5 [D]



[18...Be6= keeps the balance.] 19.g4!+-
hxg4 20.Nxg4 [Better is 20.hxg4+-
Qh7+ 21.Nh3] 20...Nxg4+ 21.Bxg4
Bxg4 22.Qxg4?? [22.hxg4= Qh7+
23.Kg3] 22...Rf2+-+ [D]



23.Kh1 Rxd2 24.Od7 g4 25.Re2
Rxe2 26.Nxe2 gxh3 [D] (Next col.)
(Text cont. next col.)

Position after 26...gxh3 (From prev. col.)



27.Rg1 Qf6 28.Qg4 [White hopes to
continue with Ng3.] 28...Rf8 29.Qxh3
Qf3+ 30.Qxf3 Rxf3 31.Ng3? [D]



[31.Rg3 Rxg3 32.Nxg3] 31...Rxd3
[Black is clearly winning.] 32.Kh2 Rd2+
33.Kh3 Ng6 34.Nf5 Nf4+ 35.Kg3
Ne2+ [D]



0-1

Copy and paste the link below into your
browser:

<https://share.chessbase.com/SharedGames/game/?p=+2Ch5I2p/jLTJdVrZzYnAU suRQ6Zt4Qe7CDvXVzOedFFrxaZ0WjiRYv 4xmouchp>



Bernie Overly and Stan Ward
Perhaps discussing their game?



Joe Mucerino vs. Eric Funk,
Tom DiMarco observing



Doug Kern vs. Alex MacFarlane

Allentown Center City Chess Club

Offer (from Eric C. Johnson): "For any of our events -- If three or more Lansdale players carpool together -- the designated driver plays for free!"

<http://www.freewebs.com/allentowncentercitychessclub>

This concludes this issue.
More games in next issue.