

~ En Passant ~

Newsletter of the North Penn Chess Club, Lansdale, PA – Fall 2019, Part 3

E. Olin Mastin, Editor

North Penn Chess Club
500 West Main Street
Lansdale, PA 19446
www.northpennchessclub.org
(215) 699-8418 donfunk@msn.com

This issue features NPCC games played in September, October, November Games as continued. The purpose of these newsletters is to include as many games as possible by NPCC players irregardless of the strength of the participants. Thanks to all for submitting games!

**Game from the NPCC 2019 Membership Drive Tournament:
Round: 4**

Submitted by Joe with his comments and selected Fritz comments [shown thusly].

**White: Jonathan Xu (1985)
Black: Joseph Mucerino (2127)
Date: 9/27/2019**

*(Please copy and paste the HTML link at the end of this article into your browser to read the complete commentary and to be able to play thru the moves.)
(Joe - Jonathan and I were the only players with a 3-0 score, so this was a very important game.) [B01: Scandinavian Defense] **1.e4 d5 [D] (Next col.) 2.exd5 Nf6 3.Nf3 [3.d4 Nxd5 4.c4 Nb6 5.Be3 Nc6 (Text cont. next col.)**

Position after 1...d5 (From prev. col.)



(Cont. from prev. col.) **6.Nf3 Bg4 7.Be2 e6 1-0 (46) Paglietti,N (2350)-Strenzwillk,D (2235) Philadelphia 1990] 3...Nxd5 4.d4 Bg4 5.Be2 e6 [5...Nc6 6.0-0 0-1 (46) De Eccher,S (2285)-Karaklajic,N (2460) Venice 1980] 6.0-0 Nc6 7.c4 Nb6 8.Be3 Bxf3 [D] (Next col.) 9.Bxf3 (Joe - A few players actually capture back with the pawn, but Xu's move is better.) **9...Nxc4 10.Bxc6+ [10.Qa4 Nb6 11.Bxc6+ 0-1 (46) De Eccher,S (2285)-Karaklajic,N (2460) Venice 1980] 10...bxc6 11.Qa4 Nb6 12.Qxc6+ Qd7 13.Qxd7+ Kxd7 [D] (Next col.) (Text cont. next col.)****

Position after 8...Bxf3 (From prev. col.)



Position after 13...Kxd7 (From prev. col.)



(Cont. from prev. col.) (Joe - At first glance it may look like this is going (Text cont. p.2)

North Penn Chess Club

41st Winter Robin

Please see Winter Robin Ad under the Notice Tab on the website for further details. www.northpennchessclub.org

<p>Registration 7 to 7:45 PM on January 10th only. Registration is then closed! Round 1 starts at 8:00 PM. Please arrive no later than 7:45 to register. Byes not permitted. Entry fee: NPCC Members-\$25. Non-NPCC Members \$35. \$30 for Non-members if received by mail on January 9th. Mail advanced entries to: Don Funk 612 Shearer St. North Wales, Pa. 19454</p>	<p>Prizes per each 8-player section: 1st Place=\$90 2nd Place=\$45 *Top in Lower Half=\$45* Class prize - Rating TBD on-site. Prizes reduced proportionally in sections with less than 8 players.</p>	<p>*All rounds must be played. Makeups can be arranged at opponent's convenience or forfeit.*</p>
---------------------------------------------------------------------------------------------------------------------------------------------------------------------------------------------------------------------------------------------------------------------------------------------------------------------------------------------------------------------------------------------------------------------------------------------	--------------------------------------------------------------------------------------------------------------------------------------------------------------------------------------------------------------------------------------------------------------------------	----------------------------------------------------------------------------------------------------------

G/120; d5 Round Robin Tournament
January 10th thru February 21st
in 8 player sections or portions thereof.

NPCC Schedule January 2020

DATE	ROUND	EVENT	ROUND TIMES	TYPE
10-Jan	1 of 7	41st NPCC Winter Robin (Please see the Winter Robin Ad under the Notices tab on website www.northpennchessclub.org for more info)	<u>Registration:</u> 7 to 7:45 PM <u>Registration is then closed!</u> Byes not permitted. Round 1 at 8 PM <u>Please arrive no later than 7:45 PM to register!</u>	Round Robin (8-Player Sections or portions thereof.)
17-Jan	2 of 7		8:00 PM	
24-Jan	3 of 7			
31-Jan	4 of 7			
7-Feb	5 of 7			
14-Feb	6 of 7			
21-Feb	7 of 7			

TIME CONTROL	ENTRY FEE	PRIZES	COMMENTS
G/120;d5 +	\$25 NPCC Members/ \$35 non-Members On Site. \$30 for non-NPCC Members if received by January 9, 2020. Mail advance entries to: Don Funk 612 Shearer St. North Wales, PA 19454	<u>PRIZES (per each 8-Player Section):</u> 1st Place = \$90, 2nd Place = \$45, "Top-in-Lower-Half" = \$45* *(Class Prize - Rating TBD on-site) (Prizes reduced proportionally in sections with less than 8 players.)	All rounds must be played. Make-up games can be arranged only at opponent's convenience or forfeit!

(Cont. from p.1) to be a quick draw, but there is still a decent amount of play left in the position.) **14.Nc3 Bb4** [14...Bd6 15.Bg5 a5 16.Rac1 a4 17.Rfd1 Rhb8, etc... ½-½ (19) (Text cont. next col.)

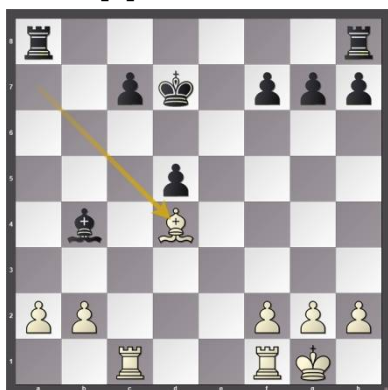
(Cont. from prev. col.)
 Brueggemann,L (2190)-Marzahn,H (2000) Frankfurt 2012] **15.Rac1N** [15.Ne4 Nd5 (15...f5 16.Nc5+ Bxc5) (Text cont. next col.)

(Cont. from prev. col.) 17.dxc5 Nd5, etc... De Eccher,S (2285)-Karaklajic,N (2460) Venice 1980 0-1 (Text cont. p.3)

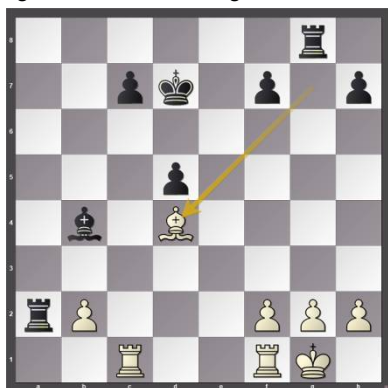
(Cont. from p.2) (46)) 16.Bd2 (16.a3 Bd6 17.Nc3 Rhb8 18.Nxd5 exd5, etc... 0-1 (25) Michalik,P-Sikora Lerch,J (2324) Trinec 2001) 16...Rhb8 17.b3 a5 18.Rfc1 f5 19.Bxb4 fxe4, etc... Paglietti,N (2350)-Strenzwilk,D (2235) Philadelphia 1990 1-0 (46)] 15...Rab8 16.d5 [D]



(Joe - This gives up White's remaining center pawn, and, in effect, traded it for the pawn on g7.) 16...Nxd5 17.Nxd5 exd5 18.Bxa7 Ra8 [18...Rb7=+ 19.Bd4 f6] 19.Bd4 [D]



[19.Bc5!? Rhb8 20.a3 Bxc5 21.Rxc5=+] 19...Rxa2 [Strongly threatening ...f6.] 20.Bxg7 Rg8 [With initiative] [Black fights for an advantage.] 21.Bd4 [D]



(Joe - Let's take a look at this position. Black has a strong protected passed pawn in the center of the board. His king is much closer to the center than White's king. Black's rooks, at the moment, are also more active than White's.) [White should try 21.Bc3=+ Rb8 22.Ra1 Rxa1 (Text cont. next col.)]

(Cont. from prev. col.) 23.Rxa1] 21...Kd6++ (Joe - Preparing to get the pawns rolling with 22...c5.) 22.Ra1 [Better is 22.Bc3 Rb8 23.h3] 22...Rga8 [D]



23.Rxa2 [23.Rac1++ was necessary.] 23...Rxa2 24.Rb1 [Better is 24.Rc1] c5 25.Bg7 d4 [D]



(Joe - Blocking the Bishop's protection of the pawn on b2. Now the plan is to march the King in with 26...Kd5 27...Kc4 and 28...Kb3 to win the b2 pawn.) 26.Kf1 Kd5 27.b3 [D]

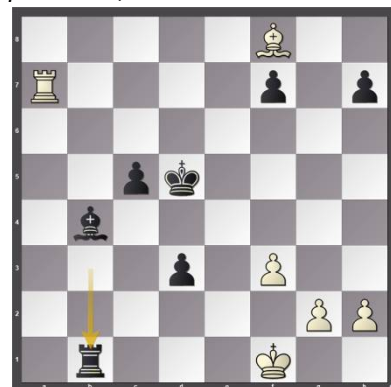


(Joe - This stops 27...Kc4, but now White's King is also cut off as well.) 27...Ke4 [Black is clearly winning.] 28.Rc1 Rb2 29.Bf8 Kd5 [D] (Next col.) (Joe - 29...d3 is also possible, but I wanted to hang on to my c-pawn.) 30.Ra1 Rxb3 31.Ra7 [Better is 31.Ke2] 31...d3 32.f3 Rb1+ [D] (Next col.) 33.Kf2 d2 34.Rxf7 d1Q 35.Rd7+ Ke6 [D] (Next col.) (Text cont. next col.)

Position after 29...Kd5 (From prev. col.)



Position after 32...Rb1+ (From prev. col.)



Position after 35...Ke6 (From prev. col.)



(Cont. from prev. col.) 0-1

Copy and paste the link below into your browser:

<http://view.chessbase.com/cbreader/2019/10/10/Game811321937.html>

Game from the NPCC 2019 Membership Drive Tournament Round: 2

Submitted by Olin with my comments and selected Fritz comments [shown thusly].

White: Mendel Atlee, (1046)

Black: Olin Mastin (1500)

Date: 9/13/2019

(Text cont. p.4)

(Cont. from p.3) *(Please copy and paste the HTML link at the end of this article into your browser to read the complete commentary and to be able to play thru the moves.) [B30: Sicilian: 2...Nc6 3 Bb5, lines without ...g6] **1.e4 c5 2.Nf3 Nc6 3.Bc4 g6 4.c3 Bg7 5.d3 d6** [5...e6=+] **6.Nbd2** [6.0-0+=; *6.Be3 Nf6 7.Qe2 0-0 8.Nbd2 e5 9.0-0 a6 10.Rfd1 b5, etc... ½-½ (19) Heidi,G (2220)-Mora,F (2305) Lugano 1989] **6...Nf6** [6...e6=+] **7.Nf1** [D]



(Olin - I did not understand why Mendel made this move which blocks castling.) [7.0-0+=] **7...0-0** [*7...Bg4 8.Ng3 Ne5 9.0-0 Nxf3+ 10.gxf3 Bh3 11.Re1 Qd7 12.a4 a6, etc... Lakshyesh,M (1036)-Li,Y Pattaya 2015 0-1 (58)] **8.Ng3N** [Black has an edge.] [*8.Ne3 e6 9.0-0 d5 10.exd5 exd5 11.Bb5 d4, etc... Roewekamp,H (1653)-Langhorst,T (1199) Germany 2011 1-0 (41)] **8...Bg4** [Black should try 8...d5=+ 9.exd5 Nxd5] **9.h3=** [D]



9...Bd7 [9...Bxf3= 10.Qxf3 Ne5] **10.a3 e6 11.b4** [11.0-0+=] **11...a6** [11...cxb4+= 12.axb4 a5 [D] (Next col.) (Olin - If 13.bxa5, then Nxa5 which seems better than Rxa5. If 13.b5, then 3...Na2 with a double attack on White's b4 Pawn; and if 14.b6 then 14...Qxb6.)] **12.bxc5** [12.0-0=] **12...dxc5** [12...Qa5=+ 13.cxd6 Ne8] **13.e5** [13.0-0+=] **13...Nd5=+** [D] (Next col.) **14.Bxd5!** exd5 **15.d4 c4** [15...Qa5+ ...Nxd4 is the strong threat. (Text cont. next col.)

Position after 12...a5 (From prev. col.)



Analysis Diagram

Position after 13...Nd5=+ (From prev. col.)



(Cont. from prev. col.) 16.Bd2 f6 17.exf6 Rae8+ 18.Ne2 Rxf6] **16.Bf4= Re8** [16...Qe7=+] **17.0-0** (Olin - White finally castles!) **17...b5** [D]



[17...Re6=+] **18.Re1** [Better is 18.Qc1] **18...Na5** [18...f6 deserves consideration.] **19.Ne2 Nb3** [Better is 19...h6] **20.Ra2 Bf5 21.Nc1 Nxc1 22.Qxc1 Ra7 23.Bh6 Rae7** [D]



(Text cont. next col.)

(Cont. from prev. col.) [23...a5=] **24.Bxg7 Kxg7 25.Rae2** [25.Nd2+=] **25...h6** [25...Rb7=+] **26.Qf4** [26.Nh2=] **26...Qa5** [Black should play 26...Rb7=+] (Olin - I do not understand why Fritz keeps insisting on moving my rook back to b7.) **27.g4** [Better is 27.Qc1=] **27...Bd3** [27...Be4!? 28.Nd2 Qxc3 29.Nxe4 dxe4 30.Qf6+ Kh7=+] **28.Qf6+ Kg8?** [D]



[28...Kh7= 29.e6 fxe6 30.Rxe6 Rxe6 31.Rxe6 Rxe6 32.Qxe6 Qxc3] **29.Ra2??** [29.e6!+- is the narrow road to win. Threatening mate with exf7+. 29...fxe6 30.Rxe6 Rxe6 31.Rxe6] **29...Re6?** [29...Qxc3+- Strongly threatening ...Qb3. 30.Qxa6 Bb1!] **30.Qf4=+ g5** [With initiative] [D]



[Do not play 30...Qxc3 31.Qxh6 g5 32.Qxg5+ Rg6 33.Qe3=+] **31.Qd2 Be4** [With initiative] [Black has good play.] **32.Qe3** [32.Re3= remains equal.] **32...f6** [32...Rf8=+] **33.Rae2?** [33.exf6= and White has nothing to worry. 33...Rxf6 34.Ne5] **33...Qxa3=+** **34.exf6 Rxf6 35.Ne5** [D] (p.5) [Better is 35.Nd2] **35...Qd6?** [35...Bd3!+- is more deadly. 36.Rd2 (36.Nxd3 Rxe3) 36...Qxc3] **36.f3?** [D] (p.5) [36.Ra1+- was worth a try.] **36...Bxf3! 37.Rf2** [37.Nxf3 Rxe3] **37...Be4 38.Rxf6 Qxf6 39.Rf1 Qe7 40.Qf2** [D] (p.5) ...Rf8 **41.Qxf8+?** [41.Qa2 Rxf1+ 42.Kxf1] **41...Qxf8 42.Rxf8+ Kxf8** [D] (p.5) (Text cont. p.6)

Position after 35.Ne5 (From p.5)



Position after 36.f3?(From p.5)



Position after 40.Qf2 (From p.5)

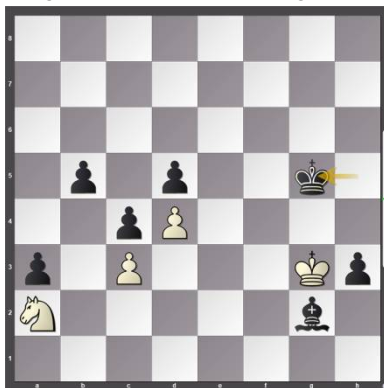


Position after 42...Kxf8 (From p.5)



(Cont. from p.5) [Endgame KB-KN]
(Olin - Black has a won endgame; however, Mendel plays it out until checkmate.)
43.Kf2 Ke7 44.Ke2 Ke6 45.Kd2 Bg2
46.h4 gxh4 47.Ke2 h3 48.Kf2 a5
49.Nc6 a4 50.Nb4 Kf6 51.Kg3 a3
52.Kh2 Kg5 (Text cont. next col.)

(Cont. from prev. col.) 53.Kg3 h5
54.gxh5 Kxh5 55.Na2 Kg5 [D]



56.Nb4 Kf5 57.Na2 Ke4 58.Nb4
Ke3 59.Kh2 Kd2 [Black mates.]
60.Na2 Kc2 61.Kg1 Kb2 [D]



62.Nb4 Kxc3 63.Na2+ Kxd4
64.Nb4 Kc3 65.Na2+ Kb2 66.Nb4
c3 67.Kh2 c2 68.Nxc2 Kxc2 69.Kg1
a2 70.Kf2 a1Q 71.Kg3 Qg1 72.Kf4
[D]

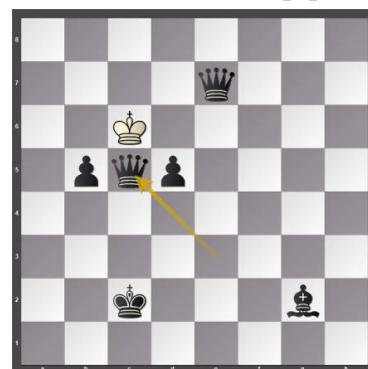


72...h2 73.Ke5 h1Q [D]



(Text cont. next col.)

(Cont. from prev. col.) 74.Kf5
Qh7+ 75.Ke5 Qe3+ 76.Kd6
Qhe7+ 77.Kc6 Q3c5# [D]



0-1

Copy and paste the link below into your browser:

<http://view.chessbase.com/cbreader/2019/10/14/Game239406453.html>

**Game from the NPCC 2019
Membership Drive
Tournament**

Round: 5

White: Bernie Overly (1520)

Black: Terance Hall (1850)

Date: 10/11/2019

Submitted by Terance with his comments (as edited) and selected Fritz/*Stockfish comments [shown thusly]. *(Please copy and paste the HTML link at the end of this article into your browser to read the complete Stockfish comments.)

[B02: Alekhine's Defense: Chase Variation and lines with early Nc3] 1.e4 d5 [D]



(Terance: I was not in the mood for a theoretical debate on the Sicilian so I brought out my old trusty Scandinavian defense to see how Bernie would handle it.) 2.exd5 Nf6

3.Nc3 Nxd5 4.d4 (Terance: Bernie thought awhile on this.) 4...c6 [D] (p.6) (Terance: Best was just taking on c3 but I wanted to see what (Text cont. p.6)

Position after 4...c6 (From p.5)



(Cont. from p.5) Bernie would play.)

5.Nxd5 (Terance: This did surprise me a little but a good move.) [5...Nf3 g6 (5...Bg4 6.Be2 e6 7.0-0 Nd7 8.Ne4 N7f6 9.Nxf6+ Nxf6 10.Bf4 Bxf3, etc... Kerekcs,Z (2014)-Hajdu,S (1979) Hungary 2014 1/2-1/2 (58)) 6.Ne4 Bg7 7.Bg5 0-0 8.Qd2 Bg4 9.Be2 Nd7 10.0-0 Qc7, etc...Cvicela,A (2080)-Iljin,S (2340) Ceske Budejovice 1996 0-1 (32)] **5...cxd5 6.Nf3 Nc6 7.Be2** [Black's piece cannot move: f8] (Terance: Better was Bd3, but White is playing solid.) **7...Qa5+N** (Terance: I knew that Bf4 was the move, but I thought I can get White to play Be2 (not the most precise move) and then I can play Qb6 or Qc7 with a slight advantage and then play Bg4.) [7...h6 8.0-0 Bf5 9.c3 e6 10.Qb3 Qc7 11.Ne5 Bd6 12.f4 0-0, etc... Kropik,J (1995)-Boucek,V (2040) Prague 2005 1-0 (73)] **8.c3** [Prevents intrusion on b4] (Terance: Of course Bernie plays the most concise move!) **8...e6?! [D]**



(Terance: I was stubborn here as the Queen should now go to b6 or the c7 square so I can play Bg4 not worrying about Ne5, and then Nxc6 hitting my Queen. I thought I could keep the momentum going, so I settled for e6 which was passive.) **9.0-0 Bd6** (Terance: Covering e5 and developing.) **10.Re1 0-0 11.Bd3** (Terance: This is when I realize that my Queen is really missed placed and my King is under attack.) **11...h6 [D]** (Next col.) (Text cont. next col.)

Position after 11...h6 (From prev. col.)



(Cont. from prev. col.) (Terance: I thought awhile on this like, what if White sacs his Bishop on h7? What happens if I take it, and the Knight goes to g5 with Check? Does my King go to g6 and defend? Can my Queen come back in time to defend, like Qd8 or Qc7? Do I need to play g6 and defend my now weak dark squares around my King? Can I play e5 to counter any wing attack? I had to think about all these things. I came up with the h6 move which prevents Ng5 allowing White to know that sacking on h6 is not good, giving me time to bring the Queen to f6 helping to defend the h6 pawn.) [*Stockfish: 11...Qc7 12.h3 f6 13.c4 Qf7 14.Qc2 g6 15.Bd2 Bd7, etc...] **12.Bd2 Qd8 13.Qc1 Qf6 [D]**



(Terance: I played this immediately as now my Queen can defend without being harassed. I can also help with the e5 push, enabling me to concentrate on the Queenside, trying to undermine the White pawn there.) **14.Qc2 Bd7 15.Rad1 Rfc8** (Terance: In hindsight it was better to play the other Rook over. I was thinking of just shoving my pawns up on the Queenside to win but it was too slow.) **16.Qb1 Rab8** (Terance: Preparing b5 ☺) **17.Bc1 b5= [D]** (Next col.) (Terance: This prevents (Text cont. next col.)

Position after 17...b5= (From prev. col.)



(Cont. from prev. col.) any c4 break threatening b4.) **18.Be3** (Terance: Very deep move. White recognizes that d4 is a future target once Black moves his King to a dark square and plays b4.) **18...Kh8** (Terance: Rc7, a5, or g5 was slightly better.) [*Stockfish: 18...Rc7 19.b4 a6 20.a3 g5 21.Qa2 Rbc8 22.Qe2 Qg7 23.Bc1 f6, etc...] **19.a3 [Consolidates b4] 19...a5 20.b4= [D]**



20...a4 [Black gains space] (Terance: Choices, should I exchange on b4 or push a4? I figured I can make c3 and a3 a permanent weakness, while my b5 pawn is protected. I also figured I could get my Knight to the c4 square via Ne7-c8-b6 then to c4, whereas White cannot get his Knight to c5. That is why I choose a4, but this plan turns out to be too slow. axb4 was best.) [20...axb4, *Stockfish: 21.cxb4 Be8 22.h3 Kg8 23.Bh7+ Kh8; 20...e5; 20...Kg8; 20...Rb7; 20...g5] **21.Qb2** [21.Qa2 Kg8 (21...g5) ; 21.Kh1; 21.Kf1] **21...Ne7 [D]** (p. 7) (Terance: The position is somewhat stagnant so I decided to give the e5 square to White to get some play on the Kingside, or (Text cont.p. 7)

Position after 21...Ne7 (From p.7)



(Cont. from p.7) the Knight tour to c4 if I can.) [21...e5 22.Nxe5 (22.dxe5 Nxe5 23.Nxe5 Qxe5 24.g3 Qxc3 25.Bd4 Qxb2 26.Bxb2=) 22...Nxe5 23.dxe5 Qxe5=; 21...Kg8 22.Qa2 Qe7 23.Qd2 Rb7=] **22.Ne5** [White threatens to win material: Ne5xd7] **22...Be8** (Terance: The most precise move as I am planning a future f6, making my Black square Bishop come alive.) **23.f4** (Terance: This did surprise me, but not unexpected. It does temporarily block White's Bishop and gives me time to improve my position.) [23.Bb1 Qh4+=] **23...Nf5=** [D]



24.Bd2 h5 (Terance: I need to prevent g4.) **25.Rf1** (Terance: Better was Qb1.) [*Stockfish: 25.Qb1 g6 26.Re2 Qd8 27.Rf1 Kg7 28.Qe1 Bd7 29.Rf3 Nh4 30.Rh3 Nf5, etc...] **25...Qh6?!** [D]



(Terance: Here I took a tactical risk. Rf3 is the correct move for White. At first it looks like it traps the rook with f6. (Text cont. next col.)

(Cont. from prev. col.) White can play Rh3 and it gets a little hairy. if Black plays fxe5 then fxe5, the Queen and Bishop are in take.) [25...g6 26.Rde1=; *Stockfish: 25...Rb7 26.Rde1 g6 27.Qb1 Qg7 28.Re2 Be7 29.Nf3 Nd6, etc...] **26.Rc1** [26.Rf3 f6+= *Stockfish: 27.Rh3 Be7 28.Ng4 Qh7 29.Re1 Bf7 30.Ne3 g6 31.Nxf5 gxf5, etc...] **26...f6 27.g4?** [D]



(Terance: A move I had calculated when I moved my Queen to h6. At first g4 seems reasonable, but fails to accurate play. Best was Rce1 with an equal game.) [Better is 27.Bb1= and White can hope to survive; *Stockfish: 27.Rce1 Qh7 28.Nf3 Bd7 29.Re2 g6 30.Qb1 Kg7 31.g3 Rh8, etc...] **27...hxg4+- 28.Nxg4 Qh4** [Black threatens to win material: Qh4xg4] (Terance: Of course Qh3 was slightly better, but to me it would have prompted White to play more correctly with forcing moves. I wanted to give White more options to go wrong.) [28...Qh5 29.Ne3+-] **29.Be2?** [D]



[29.Ne3 Ne7 30.Be1 Qh6=+] **29...Qh7** (Terance: Repositioning the Queen. g5 would be a good move here.) [29...g5!?-+] **30.Ne3 Qg6+** [D] (Next col.) (Terance: Playing for tactics here as any move with the King loses a piece or pawn and so leaves only two moves Ng4 which is bad and Ng2 Leaving Black with a huge advantage.) [*Stockfish: 30...Ba6 31.Ba4 Nh4 32.Be1 Be4

Position after 30...Qg6+ (From prev. co.)



(Cont. from prev. col.) **33.Bxh4 Qxh4 34.Qf2 Qxf2+**, etc...] **31.Ng4?** (Terance: Moves right into a pin, so now I have to take advantage of this.) [Better is 31.Ng2!?-+ [*Stockfish: 31...Qh7 32.Rce1 Nxd4 33.Bg4 Bf7 34.cxd4 Rc2 35.Qb1 Rxd2, etc...]] **31...Nh6+- 32.h3 f5** [D]



(Terance: Now White drops a piece. Bd3 does not work, because of Nxg4 hxg4 Qxg4+ losing more material for White.) **33.Rf2** [If 33.Bd3?? Nxg4 34.Kh1 Qh5 35.Kg2 Nf6 36.Be3 Ne4 37.Kg1 Ng3, etc...] **33...fxg4 34.hxg4 Bd7** (Terance: Best was Kg8.) [34...Bc7!? 35.Rcf1-+; *Stockfish: 34...Kg8 35.Rg2 Kf8 36.Rf1 Ng8 37.f5 exf5 38.Qc1 Bd7 39.gxf5 Qh7, etc...] **35.Rg2 Kg8** (Terance: After a little think Stockfish finally agrees with me. Safety first, Kg8 is the best move.) **36.f5** [D]



(Text cont. p.8)

(Cont. from p.7) (Terance: Bernie keeps fighting, because now Black has to play accurately to win the game.) [36.Rf1 Rc7+] **36...Qh7** (Terance: exf5 is best, but seemed very risky to me; therefore, I chose the second best move after a long calculated think.) [Better is 36...exf5 37.gxf5 Qh7+] **37.Bd3?? [D]**



[An oversight. However, White was lost anyway.] [Better is 37.Qa2+ *Stockfish: 37...Rf8 38.Re1 Rbe8 39.Rf1 Bc6 40.Qb1 exf5 41.Bd3 Re4, etc...] **37...exf5**
38.Qb1 [38.Qa2 doesn't change anything anymore] **38...Nxc4! [D]**



(Terance: Nice tactic, because if White plays Rxc4, Black can play Qh2+.) **39.Rf1** [39.Be2+ there is nothing better in the position] **39...Bh2+ [D]**



(Terance: White resigns. Black is up by 23.28 pawns according to the Stockfish Chess engine.) [39...Bh2+ 40.Kh1 Qh3+ (*Stockfish: 40...Bf4+ 41.Kg1 Bxd2 42.Rxd2 Qh3 43.Qa2 Qg3+, etc...)] **0-1** (Text cont. next col.)

(Cont. from prev. col.) Copy and paste the link below into your browser:

<http://view.chessbase.com/cbreader/2019/11/2/Game876974328.html>

Game from the NPCC 2019 November G90 Swiss Tournament

Round: 1

Submitted by Olin with my comments and selected Fritz /*Stockfish comments [shown thusly].

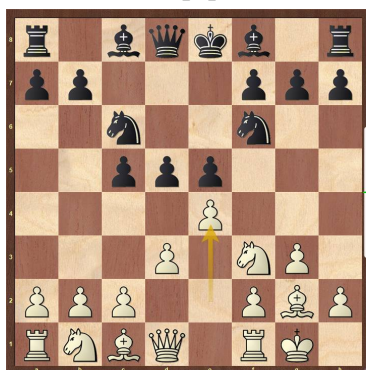
White: Olin Mastin (1500)

Black: Harshil Jain (1014)

Date: 11/1/2019

* (Please copy and paste the HTML link at the end of this article into your browser to read the complete Stockfish comments.)

[A08: King's Indian Attack] **1.Nf3 Nf6 2.g3 d5 3.Bg2 c5 4.d3 Nc6 5.0-0 e5 6.e4 [D]**

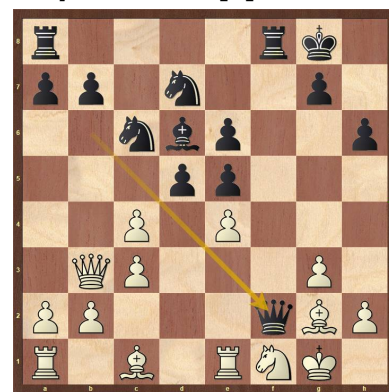


6...Be6 [6...dxe4 7.dxe4 Bg4 8.Na3 Qxd1 9.Rxd1 Nd4, etc... Gochev,M (2355)-Delmont,J (2110) Orange 1990 1-0 (43); 6...Bg4 7.Nc3 d4 8.Ne2 Qd7 9.Kh1 h5, etc... Schnelle,R-Hedayat Nassab,D Pinneberg 1998 0-1 (33)]
7.Nbd2N [7.Nc3 d4 8.Ne2 Be7 9.Ng5 Bg4 10.f3 Bh5, etc... Uffelmann,H-Hoerl,A Bad Wiessee 1997 1/2-1/2 (77)]
7...Bd6 8.Re1 0-0 9.c3 Qb6 10.Qb3 Nd7 [D]

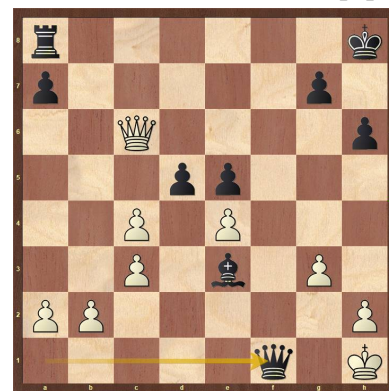


(Text cont. next col.)

(Cont. from prev. col.) **11.Ng5** [*Stockfish: 11.exd5 Qxb3 12.Nxb3 Bxd5 13.Nxe5 Ndx5, etc...]
11...h6 [*Stockfish: 11...d4 12.Nxe6 Qxb3 13.Nxb3 fxe6 14.Rf1 b6, etc...]
12.Nxe6 fxe6 13.Nf1? [*Stockfish: 13.Bh3 Qxb3 14.Bxe6+ Rf7 15.axb3 d4, etc...]
13...c4! 14.dxc4?? (Olin - 14.Qxb6 was absolutely necessary!) [*Stockfish: 14.Qxb6 Nxb6 15.exd5 exd5 16.dxc4 d4, etc...]
14...Qxf2+ [D]



15.Kh1 Qxe1 16.Be3 Qxa1 17.Qxb7 Bc5 18.Qxd7 Bxe3 19.Qxe6+ Kh8 20.Qxc6 [*Stockfish: 20.Qf5 dxe4 21.g4 Ne7 22.h4 Nxf5 23.Kh2 Bf4+, etc...; *Stockfish 9: 2) 20.h4 Rxf1+ 21.Kh2 h5 22.Qh6+ gxh6, etc...]
20...Rxf1+ 21.Bxf1 Qxf1# [D]



0-1

(Olin - This win earned Harshil the Upset Prize for this Tournament!)

Copy and paste the link below into your browser:

<https://share.chessbase.com/SharedGames/game/?p=aiCotZDUSH5r6cOMzIkHEvf67LE7Cc2lCDPmGhCotUMF2w6hFjkgZK0HSDh986q>

This concludes this issue. More games in next issue.