

~ En Passant ~

Newsletter of the North Penn Chess Club, Lansdale, PA – Fall 2019, Part 2

E. Olin Mastin, Editor

North Penn Chess Club
500 West Main Street
Lansdale, PA 19446

www.northpennchessclub.org
(215) 699-8418 donfunk@msn.com

This issue features NPCC games played in September, October, and November Games.

The purpose of these newsletters is to include as many games as possible by NPCC players irregardless of the strength of the participants. Thanks to all for submitting games!

Game from the NPCC 2019

Membership Drive Tournament:

Round: 1

Submitted by Terance with his comments (as edited) and selected Fritz/*Stockfish comments [shown thusly].

White: William Campion (1403)

Black: Terance Hall (1850)

Date: 9/6/2019

*(Please copy and paste the HTML link at the end of this article into your browser to read the complete Stockfish comments.)

[A45: Trompowsky Attack] **1. d4 Nf6**

(Terance: I decided not to play d5 first and to play Nf6 to go into the mainline Trompowsky that Bill likes as I been (Text cont. next col.)

(Cont. from prev. col.) very successful against it with Bill.) **2. Bg5 Ne4 [D]**



(Terance: This is the line I like to play.) **3. Bf4 d5 4. f3** (Terance: Bill plays a sharp line as weakening the Kingside to gain center pressure is double edged.) **4...Nd6 [D]**



(Text cont. next col.)

(Cont. from prev. col.) (Terance: I felt and I know Nf6 is slightly better, but with Nd6 I always get good play.) **5. e3** [Stockfish: 5. Nc3 e6 6. e4 c6 7. Bd3 Na6 8. a3 Be7, etc...] **5...Bf5** [Stockfish: 5...e6 6. Nc3 Be7 7. e4 0-0 8. Bd3 c6, etc...] **6. Bd3 e6** [6...Bxd3 7. Qxd3 c6 8. Nd2 e6, etc... Raivio,E (1789)-Koivumaki, M (1856) Naantali 2012 1/2-1/2 (70)] **7. Ne2** [7. Nc3 Bxd3 8. Qxd3 Nd7 9. e4 c6 10. Bxd6 Bxd6, etc... Ristic,N (2395)-Van der Stricht,G (2355) Sremic Krsko 1998 0-1 (45)] **7...c5?!N [D]**



(Terance: Stockfish didn't like this move so much but preferred Nc6. I felt the pressure on the d-pawn would be nice and I can play Nc6 after.) [7...Nd7 8. Nbc3 g5 9. Bxd6 Bxd6 10. Bxf5 exf5, etc...(Text cont. p.2)

North Penn Chess Club 41st Winter Robin

Please see Winter Robin Ad under the Notice Tab on the website for further details. www.northpennchessclub.org

Registration 7 to 7:45 PM on January 10th only.
Registration is then closed! Round 1 starts at 8:00 PM.
Please arrive no later than 7:45 to register. Byes not permitted.
Entry fee: NPCC Members-\$25. Non-NPCC Members \$35.
\$30 for Non-members if received by mail on January 9th.
Mail advanced entries to:
Don Funk
612 Shearer St.
North Wales, Pa. 19454

Prizes per each 8-player section:
1st Place=\$90
2nd Place=\$45
Top in Lower Half=\$45
Class prize - Rating TBD on-site.
Prizes reduced proportionally in sections with less than 8 players.

All rounds must be played. Makeups can be arranged at opponent's convenience or forfeit.

G/120; d5 Round Robin Tournament January 10th thru February 21st in 8 player sections or portions thereof.

NPCC Schedule January 2020

DATE	ROUND	EVENT	ROUND TIMES	TYPE
10-Jan	1 of 7	41st NPCC Winter Robin (Please see the Winter Robin Ad under the Notices tab on website www.northpennchessclub.org for more info)	<u>Registration:</u> 7 to 7:45 PM <u>Registration is then closed!</u> Byes not permitted. Round 1 at 8 PM <u>Please arrive no later than 7:45 PM to register!</u>	Round Robin (8-Player Sections or portions thereof.)
17-Jan	2 of 7		8:00 PM	
24-Jan	3 of 7			
31-Jan	4 of 7			
7-Feb	5 of 7			
14-Feb	6 of 7			
21-Feb	7 of 7			

TIME CONTROL	ENTRY FEE	PRIZES	COMMENTS
G/120;d5 +	\$25 NPCC Members/ \$35 non-Members On Site. \$30 for non-NPCC Members if received by January 9, 2020. Mail advance entries to: Don Funk 612 Shearer St. North Wales, PA 19454	<u>PRIZES (per each 8-Player Section):</u> 1st Place = \$90, 2nd Place = \$45, "Top-in-Lower-Half" = \$45* *(Class Prize - Rating TBD on-site) (Prizes reduced proportionally in sections with less than 8 players.)	All rounds must be played. Make-up games can be arranged only at opponent's convenience or forfeit!

(Cont. from p.1) Boron,A (2012)-Greenberg,H (1773) Winnipeg 2009 1-0 (56); 7...Nc6 8.0-0=; Stockfish: 7...Bxd3 8.Qxd3 Be7 9.0-0 0-0, etc...] **8.Bxf5?!** (Terance: (Text cont. next col.)

(Cont. from prev. col.) Now the advantage shifts to me. I can attack his backward e-pawn with my next move.) [8.dxc5!? has some apparent merit (Text cont. next col.)

(Cont. from prev. col.) 8...Qa5+ 9.Nbc3 Bxd3 10.cxd3 Qxc5 11.Rc1+=] **8...Nxf5=[D]** (p.2) **9.c3 Nc6** (Text cont. p.3)

Position after 8...Nxf5= (From p.2)



(Cont. from p.2) [Stockfish: 9...g5 10.Bxb8 Rxb8 11.Qd2 Rc8 12.0-0 Bg7, etc...] **10.Nd2?** (Terance: Not realizing my next move! Best was e4.) [Better is 10.e4!? and White can hope to live 10...g5 11.Bc1 dxe4 12.fxex4=] **10...g5+** [D]



(Terance: The key move with a huge advantage according to Stockfish.) **11.Bg3** [11.e4!? gxf4 12.exf5 Qh4+ 13.Kf1+ 0-0-0, etc...] **11...Nxe3+** [D]



(Terance: Bill was not even aware that this pawn was hanging until I took it.) **12.Qa4?!** [12.Qb3 Qd7 13.Kf2 Nf5+] **12...Nxcg2+** [12...a6 seems even better 13.b4 cxb4 14.Kf2+] **13.Kf2 Nh4** [D] (Next col.) (Terance: Better than Nf4 in which I give back a pawn but still winning.) **14.dxc5?** (Terance: This just helps me to develop with a huge advantage.) [14.Bxh4 gxh4 15.f4+] **14...Bxc5+** **15.Nd4** [15.Kf1 Qf6 16.Bxh4 gxh4+] **15...Qf6!** [D] (Next col.) (Text cont. next col.)

Position after 13...Nh4 (From prev. col.)



Position after 15...Qf6! (From prev. col.)



(Cont. from prev. col.) (Terance: The strongest move in the position, as it threatens f3, protects e5, and threatens to trade down on d4.) **16.Bxh4 gxh4** **17.Rae1** [17.N2b3 doesn't get the cat off the tree 17...Bb6 18.Ke1 Qf4+] **17...Bxd4+** (Terance: This exchange solidifies my winning advantage.) [Better is 17...0-0-0!? might be the shorter path 18.Ke2 Nxd4+ 19.cxd4 Bxd4 20.Nb3+] **18.cxd4 Qxd4+** **19.Qxd4 Nxd4** [D]



20.Rhg1 [20.Nf1 cannot undo what has already been done 20...Rc8 21.Ne3 Rg8+] **20...Rc8 21.Rg4 Nf5** [D] (Next col.) (Terance: The position I envisioned when I played 17...Bxd4.) **22.Rb4** (Text cont. next col.)

Position after 21...Nf5 (From prev. col.)



(Cont. from prev. col.) [22.Ke2 doesn't get the bull off the ice 22...Kd7+] **22...Rc2** (Terance: Keeping White busy but simple play would suffice.) [Better is 22...Rg8!? keeps an even firmer grip 23.Rh1 (23.Rxb7? h3 24.Ke2 Rg2+ 25.Kd3 Rxh2 26.Rxa7 Rf2, etc...; Stockfish: 22...Rg8 23.Rg4 Rxg4 24.fxg4 Nd4, etc...)] **23.Ke2 b6** [D]



24.Kd3 Rc7 25.a4 [25.Rf4 is not the saving move 25...Kf8+] **25...Kd7** [D]



(Terance: I timed this move to send the Rook over to support the b-pawn or add pressure down the c-file. I also prevent any later tactics on my King being pinned on e8 if the d5 pawn is attacked.) **26.Rb5** [26.Rb1 doesn't change the outcome of the game 26...Rhc8+] **26...Rc5** (Text cont. p.4)

(Cont. from p.3) [26...Rg8 and Black can already relax 27.Rb4-+] **27.Rb4** (Terance: White does not want to trade his active Rook being three pawns down.) **27...Rhc8 28.Nb3?** [28.f4-+ what else?] **28...Rc4! [D]**



(Terance: White resigns as he loses more material. Rxc4? loses to dxc4+ and drops the Knight. If Rb5 Black can play Nd6 and traps the Rook or simply take the a4 pawn.) [28...Rc4 29.Rxc4 dxc4+ 30.Kc3 cxb3+ 31.Kxb3 Ke7-+] **0-1**

Copy and paste the link below into your browser:

<http://view.chessbase.com/cbreader/2019/9/7/Game78056984.html>

Game from the NPCC 2019 Membership Drive Tournament: Round: 3

Submitted by Olin with my comments and selected Fritz comments [shown thusly].

White: Olin Mastin (1500)

Black: Don Funk (1521)

Date: 9/20/2019

* (Please copy and paste the HTML link at the end of this article into your browser to read the complete commentary and to be able to play thru the moves.)

[A07: Réti Opening: New York and Capablanca Systems] **1.Nf3 d5 2.g3 Bf5 3.Bg2 Nf6 4.0-0** [4.d3 e6 (4...Nbd7 5.Nbd2 1-0 (48) Haik,A (2450)-Miralles,G (2410) Paris 1986) 5.Nbd2 Nbd7 1-0 (77) Ordonez Cabaneros,J-Recuero Guerra,D Gijon 1999] **4...e6 5.d3 Nbd7 6.Nbd2 c5** [6...Be7=; 6...Bc5 7.e3 h6 8.Qe2 0-0 9.b3 Bh7 10.Bb2 c6, etc... Haik,A (2450)-Miralles,G (2410) Paris 1986 1-0 (48)] **7.Re1** [7.c4+ d4 8.Nh4 Rb8 9.Nxf5 exf5 10.Re1 Bd6 11.e4 fxe4 12.Nxe4 Be7, etc... Goodwin,D (1419)-Gerlach,M (1313) Bad Homburg 2015 ½-½ (37)] **7...Be7N [D]** (Next col.) [7...Bg6+=; 7...Bd6 8.e4 Bg4 9.h3 Bxf3 10.Nxf3 dxe4 11.dxe4 Be7 12.Bf4 0-0, etc... Ordonez Cabaneros,J-Recuero Guerra,D Gijon 1999 1-0 (77); 7...Qc7 8.e4 dxe4 9.dxe4 Bg4 10.h3 Bh5 (Text cont. next col.)

(From prev. col.) **Position after 7...Be7N**



(Cont. from prev. col.) **11.b3 Rd8, etc... Kunze,M-Weschke,W (1795) Ellwangen 1998 1-0 (35)] 8.e4** [8.c4+-] (Olin - This is an alternate move, which I have tried on occasion.) **8...dxe4!=** [White has an edge.] **9.dxe4 Bg4** [9...Bg6=] **10.h3** [10.Qe2+] **10...Bxf3** [Black should play 10...Bh5+=] **11.Bxf3** [11.Qxf3+- Ne5 12.Qe2] **11...Rb8 [D]**



[11...Ne5+=] **12.e5!+-** (Olin - This pawn thrust is thematic in the KIA.) **12...Nd5 13.c4** [13.Nc4+] **13...Nc7** [13...Nb4!= remains equal.] **14.Qe2 [D]**



(Olin - Overprotecting the e-pawn as per Nimsowitch's teachings.) [Better is 14.Bg2] **14...0-0 15.b3** [15.Nb3+] **15...f6** [15...Nxe5!- 16.Rd1 (Text cont. next col.)

(Cont. from prev. col.) (16.Qxe5 Bf6) **16...Bf6] 16.Bb2 Nxe5 17.Bxe5 fxe5 18.Rad1 Bf6 19.Ne4 Qe7 [D]**



20.Rd3 [20.Rd6!+-] **20...Rbd8** [20...Rfd8!+] **21.Red1** [21.Nxf6+= is superior. 21...gxf6 22.Rxd8 (22.Bxb7 Rd4+=) 22...Rxd8 23.Bxb7] **21...b6** [21...Rd4=] **22.Nxf6+** [Better is 22.Rd6+=] **22...Qxf6?** [22...gxf6+= keeps the upper hand. 23.Rxd8 Rxd8] **23.Rxd8 Rxd8 24.Rxd8+ Qxd8 25.Qxe5 [D]**



25...Qe7 26.Kg2 [White should try 26.Bc6+-] **26...Ne8!+= 27.h4 Qd6 28.Qe4 Qe7! 29.Qa8** [29.Bg4+] **29...Kf7! [D]**



30.Bh5+ g6 31.Qf3+ [31.Bf3+=] **31...Qf6=** [The position is equal.] **32.Qb7+ Qe7 33.Qf3+ Qf6** [33...Nf6!? 34.Bg4, Only move, Kg7=] **34.Bg4 Qxf3+ 35.Kxf3** [KB-KN] (Text cont. p.5)

(Cont. from p.4) **35...Kf6 36.Ke3 Nd6 37.Bh3 Nf5+ [D]**



38.Kd3 Nd4 39.Bg2 Ke5 40.Be4 [D]



(Olin - I included two Stockfish variations which conclude that a draw was the correct outcome.)

[Stockfish 9: 1 40...Nf5 (Stockfish 9: 2: 40...a6 41.Bb7 a5 42.Be4 Nf5 43.Bxf5 exf5 44.Ke3 h6 45.Kd3 Kf6 46.Ke3 Ke50.00/62) 41.Bg2 Kf6 42.Be4 Ke5] [D]



Analysis Diagram

½-½

Copy and paste the link below into your browser:

<http://view.chessbase.com/cbreader/2019/10/15/Game292171562.html>

Game from the NPCC 2019 Membership Drive Tournament: Round: 3

Submitted by Joe with his comments and selected Fritz comments [shown thusly].

White: Joseph Mucerino (2127)

Black: Justin Xu (1637)

Date: 9/20/2019

* (Please copy and paste the HTML link at the end of this article (Text cont. next col.)

(Cont. from prev. col.) into your browser to read the complete commentary and to be able to play thru the moves.) [D02: 1 d4 d5 2 Nf3 sidelines, including 2...Nf6 3 g3 and 2...Nf6 3 Bf4] **1.d4 d5 2.Nf3 Nc6?! [D]**



(Joe - Blocking the c-pawn in a queen's pawn opening is usually not a good idea, because it's more difficult to develop the queen.) **3.Bf4 Nf6 4.e3 Bf5 5.c3 e6 6.Bb5 [Better is 6.Bd3] 6...a6? [D]**



(Joe - This loses a pawn.) [6...Bd6= keeps the balance.] **7.Bxc6+!+- bxc6 8.Qa4 Ra7 9.Qxc6+ [9.Ne5 Bd6 10.Qxc6+ 1-0 (26) Knoblauch,L (2114)-Baier,F (1854) Augsburg 2013] 9...Nd7 [Better is 9...Qd7 10.Qxd7+ Nxd7] 10.Ne5?! [D]**



(Joe - Stockfish 7 didn't like this. It preferred moves like 10.c4 and 10.Nbd2.) **10...Bd6 [10...f6+= 11.e4 dxe4] (Text cont. next col.)**

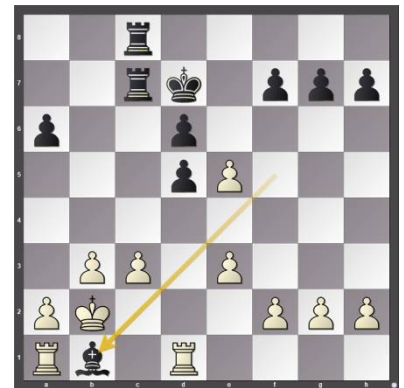
(Cont. from prev. col.) **11.Nxd7 [11.c4 is interesting. 11...Bxe5 12.dxe5 Qb8 13.b3 dxc4 14.Qxc4 Qb5 15.Nd2] 11...Qxd7 12.Qxd7+ Kxd7 13.Bxd6 cxd6N [13...Kxd6 14.Kd2 Rb8 15.b3 c5 16.Na3 Rc7, etc... 1-0 (26) Knoblauch,L (2114)-Baier,F (1854) Augsburg 2013] 14.Kd2 Rb7 15.Kc1?! [D]**



(Joe - Better is 15.b3 and 16.Na3, when the rooks are connected.) **15...Rhb8 16.b3 e5 17.Rd1 Rc7 [Better is 17...e4] 18.Kb2 [D]**



(Joe - A bit overly cautious. White can win a second pawn with 18.dxe5.) [Better is 18.dxe5 Bxb1 19.Kxb1 (19.Rxb1 Rxc3+ 20.Kb2 Rc5+)] **18...Rbc8 [Better is 18...Bxb1 19.Raxb1 (19.Rdx1 Rbc8+=) 19...Ke6] 19.dxe5 Bxb1 [D]**



20.Raxb1 (Joe - I was happy to get rid of that raking bishop.) [Don't do 20.Kxb1?! Rxc3 21.Rd2 dxe5+=] **20...Rxc3 21.Rd2 [White should try (Text cont. p.6)**

(Cont. from p.5) 21.Rxd5+- Rc2+
22.Ka3] 21...dxe5 22.Rxd5+ Ke6
23.Rd2 a5 24.Rbd1 Kf6?! [D]



(Joe - This allows white to move his pas-
sive rook from d1 to d2, and activate the
other rook.) [Better is 24...Kf5]
25.Rd6+ Kg5 [intending ...Rc2+.]
26.R1d2 f6 [Better is 26...Kf5 27.R6d5
a4 28.bxa4 R3c4] 27.Rd7 [D]



(Joe - Forcing the king to move back-
wards.) 27...Kg6 (Joe - Not 27...R8c7
because 28.Rxg7+ wins a pawn.)
28.R7d5 [White should play 28.a4+-]
28...R3c5 [28...a4+- 29.bxa4 R3c4]
29.a3 Rc1? [D]



(Joe - I think Black realized that he was in
trouble. If he plays normally, then White
will create a passed pawn that will be
extremely difficult to stop. Black looks for
counter play, but doesn't find it.)
[29...Rxd5 keeps fighting. 30.Rxd5 Ra8]
30.Rxa5+- Rh1 31.h3 Rcc1
32.Ra4 Ra1 33.Rg4+ Kh6 34.a4 f5
(Text cont. next col.)

(Cont. from prev. col.) [34...Rhb1+ is
a better defense. 35.Kc3 Rc1+ 36.Rc2
Rd1] 35.Rh4+ Kg6 36.Rd6+ Kf7
37.Rh5! [D]



(Joe - Now either Black's center pawns
will fall, or he will allow 37...g6
38.Rxh7+ and he is close to being mat-
ed.) 37...Rhb1+ 38.Kc3 Ke7
39.Rd2 Rg1 40.Rxf5 [D]



1-0
Copy and paste the link below into your
browser:
<http://view.chessbase.com/cbreader/2019/10/7/Game540173000.html>

Game from the NPCC 2019 Membership Drive

Tournament:

Round: 5

Submitted by Olin with my comments
and selected Fritz comments [shown
thusly].

White: Olin Mastin (1500)

Black: Justin Xu (1700)

Date: 10/11/2019

*(Please copy and paste the HTML link
at the end of this article into your
browser to able to play thru the moves.)

[A07: Réti Opening: New York and
Capablanca Systems] 1.Nf3 Nf6 2.g3
d5 3.Bg2 Nc6 4.0-0 e5 5.d3 Bc5
[D] (Next col.) 6.Nbd2 [6.Nxe5!+-
keeps the pressure on. 6...Nxe5 7.d4]
6...Bg4 [6...e4+- 7.dxe4 dxe4; (Text
cont. next col.)

(From prev. col.) Position after
5...Bc5



(Cont. from prev. col.) 6...0-0 7.c3
½-½ (29) Eggers,H (1044)-
Giersiepen,A (800) Hamburg 1999]
7.c3 [7.c4!+=; 7.h3 Bh5 8.e4 0-0
9.Re1 Re8 10.c3 Qd7 11.b4 Bd6, etc...
Gonzalez Gonzalez,A (2054)-Salinero
de Prado,J (2192) Erandio 2004 0-1
(39)] 7...0-0 [7...Bb6=] 8.Qc2N
[8.b4+= Bd6 (8...Bb6 9.b5 Ne7
10.Nxe5 Qd6 11.d4 Ng6 12.Nxg4
Nxg4, etc... Kotleba,M-Matis,T Slo-
vakia 2013 1-0 (33)] 9.Bb2; 8.h3 Be6
9.Qc2 Qd6 10.e4 Rab8 11.Nb3 d4,
etc... Eggers,H (1044)-Giersiepen,A
(800) Hamburg 1999 ½-½] 8...Qd7
[8...a5=+] 9.b4+= Bd6 [D]



10.h4 [White should play 10.Bb2+=]
10...Rfe8 [Better is 10...Ne7=+]
11.Re1? [D]



[11.e4= and White stays safe.]
(Text cont. p.7)

(Cont. from p.5) 11...e4+- 12.dxe4 dxe4 13.Nh2 e3 [D]



14.Ndf1? [14.Ne4 exf2+ 15.Nxf2] 14...exf2+ 15.Kxf2 Be5 [D]



[15...a5+- 16.Nxg4 Nxg4+ 17.Kg1 axb4] 16.Nxg4 [16.Bf4+- is a better defense.] 16...Nxg4+ 17.Kg1 [D]



17...Nxb4! 18.Qb3 [18.cxb4 Bxa1] 18...Qd6 [D]



[18...Qf5+- and Black stays clearly on top. 19.Qxb4 Bd6] 19.Bb2? (Text cont. next col.)

(Cont. from prev. col.) [19.Bf4+- Qb6+ 20.Kh1] 19...Qb6+? [19...Bxg3 (->...Bh2+) 20.Bf3 Qc5+ 21.e3 Qf5 22.Bxg4 Bf2+ 23.Kh2 Qxg4 24.Qxb4 Qg1+ 25.Kh3 Qh1+ 26.Nh2 Bxe1] 20.e3 [D]



[20.Kh1 was the only defense. 20...Nc6 21.Rab1] 20...Nd3! [D]



21.Qxb6 axb6 [Black is clearly winning.] 22.Bxb7 Rab8 23.Bc6 Red8 [Much less strong is 23...Nxb2 24.Re2+-] 24.Ba3 [D]



24...Nxe1 25.Rxe1 Bxc3 26.Rc1 Bd2 27.Rc4 Nxe3 28.Nxe3 Bxe3+ 29.Kg2 Rd2+ 30.Kh3 Rxa2 31.Bb4 h6 32.Re4 Bc5 33.Bc3 Rc2 34.Be5 Bd6 [D] (Next col.) 35.Bd4?? Rxc6 36.Rg4 Bf8 [D] (Next col.) 0-1

Copy and paste the link below into your browser:

<http://view.chessbase.com/cbreder/2019/10/13/Game139287437.html>

Position after 34...Bd6 (From prev. col.)



Position after 36...Bf8 (From prev. col.)



Game from the NPCC 2019 October G45 Two-Night Tournament

Round: 4

Submitted by Olin with my comments and selected Fritz comments [shown thusly].

White: Olin Mastin (1517)
Black: Will Moyer (1578)
Date: 10/25/2019

*(Please copy and paste the HTML link at the end of this article into your browser to read the complete commentary and to be able to play thru the moves.)

[A07: Réti Opening: New York and Capablanca Systems] 1.Nf3 d5 [1...g6 2.g3 Bg7 3.Bg2 0-1 (28) Zolotarew,P-Neb,R Wiesbaden 2000] 2.g3 g6 3.Bg2 Bg7 4.0-0 e5 5.d3 Ne7 6.Nbd2 0-0 7.e4 d4 [D] (p.8) 8.Nc4 Bg4 [8...Nec6 9.a4 Na6 10.Nfd2 Be6 11.f4 exf4, etc... Bezuch,M (2302)-Fridman,D (2667) Warsaw 2012 0-1 (34); 8...b5 9.Ncxe5 f6 10.c3 fxe5 11.cxd4 exd4, etc... 0-1 (19) Czumbel,P (1775)-Gara,T (2331) Hungary 2014] 9.h3 Bxf3! 10.Qxf3N [The position is equal.] (Text cont. p.8)

Position after 7...d4 (From p.7)



(Cont. from p.7) [10.Bxf3 c5 11.a4 Nbc6 12.Bg2 Qc7 13.f4 f6, etc... Zolotarew,P-Neb,R Wiesbaden 2000 0-1] **10...f5** [10...Nec6= remains equal.] **11.Bg5 b5** [Better is 11...c6] **12.Nd2** [Better is 11...c6] **12.Nd2** [White should try 12.exf5 c6 13.f6 Bxf6 14.Bxf6 bxc4 15.Rae1 (15.dxc4 Qe8+=)] **12...Nd7** [D]



[Better is 12...Bf6] **13.b4** [13.exf5± Rb8 14.Qd5+ Nxd5 15.Bxd5+ (15.Bxd8 N7b6=) 15...Kh8 16.Bxd8 Rfxd8 17.fxg6] **13...Rc8** [13...f4=] **14.Nb3** [14.a4+] **14...c5** [14...f4=] **15.bxc5** [15.exf5+- c4 16.Nc5 Nxc5 17.bxc5] **15...Nxc5=** **16.Nxc5 Rxc5** **17.Rfc1** [D]



[17.Rfb1= keeps the balance.] **17...Qd7** [17...f4!+] **18.Bd2 Rfc8** [18...fxe4= 19.Qg4 Qxg4 20.hxg4 Nd5] **19.Qd1** [19.exf5+= gxf5 [D] (Next col.) 20.a4!] **19...Qc7** [19...fxe4= 20.dxe4 a6] **20.Bb4+= Rc6** [20...f4+=] **21.exf5+- Rf6** [D] (Next col.) **22.Bxe7** [22.c4+- and White stays clearly on top.] (Text cont. next col.)

Position after [19.exf5+= gxf5



Analysis Diagram

Position after 21...Rf6 (From prev. col.)



(Cont. from prev. col.) **22...Qxe7+-** **23.Bd5+ Kh8** [D]



24.g4 [24.fxg6+- And now Qg4 would win. 24...Bh6 25.Rcb1] **24...gxf5+=** [...Rcf8 is the strong threat.] **25.gxf5 Rxf5** [White must now prevent ...Qh4.] **26.Be4 Qg5+** [Better is 26...Rg5+- 27.Kh2 Bh6] **27.Qg4** [D]



27...Qxg4+ **28.hxg4 Rg5** **29.f3 h5** **30.Bf5 Rc3** [Black should play 30...Rc5=] (Text next col.)

(Cont. from prev. col.) **31.Kf2** [31.Rcb1!+=] **31...Bh6** **32.Rh1?** [D]



(Olin - Very, very bad move!!) [32.Rcb1=: Stockfish: 1) 32.Re1 Rxc2+ 33.Re2 Rxe2+ 34.Kxe2 Rg7 35.Rh1 Bf4, etc...; Stockfish: 2) 32.f4 exf4 33.Rh1 Rxc2+ 34.Kf3 hxg4+ 35.Bxg4 Rg6, etc...] **32...Rxc2+-+** **33.Kg3 Rd2** [33...b4+-] **34.Rxh5 Rxh5** **35.gxh5 Kg7** **36.Rc1?** [D]



[36.Rb1=] **36...Bf4+-+** [Black is clearly winning.] **37.Kh3 Rh2+!** **38.Kg4** [D]



38...Bxc1 [Accuracy: White = 25%, Black = 18%.] **0-1**

Copy and paste the link below into your browser:

<http://view.chessbase.com/cbreader/2019/10/27/Game348749218.html>

This concludes this issue. More games in next issue.