

~ En Passant ~

Newsletter of the North Penn Chess Club, Lansdale, PA – Summer 2019, Part 3

E. Olin Mastin, Editor

North Penn Chess Club
500 West Main Street
Lansdale, PA 19446

www.northpennchessclub.org
(215) 699-8418 donfunk@msn.com

This issue features NPCC games played in March, June 2019 and the 13th Philly Open featuring Joe Mucerino.

The purpose of these newsletters is to include as many games as possible by NPCC players irregardless of the strength of the participants. Thanks to all for submitting games!

Game from the NPCC 2019 March-April G90 Swiss Tournament

Round: 5

White: Alex MacFarlane (1860)
Black: Dennis Baluk (1921)
Date: 3/29/2019

Submitted by Alex with his comments (as edited) and selected Fritz comments [shown thusly].

*(Please copy and paste the HTML link at the end of this article into your browser to play thru the complete game comments.) [B21: Sicilian: 2 f4 and Morra Gambit] (Alex - Hi guys, I said I would send you some games but have been a total (Text cont. next col.)

(Cont. from prev. col.) slacker. Here is the one I figure Terrance would like to see the most along with the comments below.)

1.e4 c5 2.d4 cxd4 3.c3 [D]



3...dxc3 4.Nxc3 d6 5.Nf3 e6
6.Bc4 Nf6 7.e5 [D]



(Text cont. next col.)

(Cont. from prev. col.) (Alex - It's easy to find novelties when your opening theory has run out.) 7...d5

8.exf6+= dxc4 9.Qxd8+ Kxd8
10.Ne5N [D]



(Alex - Bg5 would have been better here by keeping the pressure on while freeing the Queen's Rook.) [*10.Bg5+= Kc7 (10...g6 11.Ne5 Ke8 12.Nb5 Bb4+ 13.Ke2 Na6 14.Rhd1 h6, etc... Allen,T (1558)-Peate,J (120) Coventry 2015 1-0 10...Ke8 11.Nb5 [11.fxf7= keeps the balance. 11...Bxf7 12.Nxc4] 11...Na6 [11...gxf6+ strongly threatening ...Bb4+. 12.Ng4 Kd8] 12.fxf7 [12.Nxc4 Bb4+ 13.Nc3 gxf6+=; 12.Bg5+= feels stronger. 12...h6 13.Bh4] 12...Bxf7= 13.Nd6+ Ke7! [D] (p.2) (Text cont. p.2)



Gary Stevens Memorial 11th Annual NPCC Touch-Move Blitz Championship

Round Robin. G/5; d0. Rounds TBD on-site based on # of entrants. \$7 NPCC Members/ \$10 Non-Members. Prizes (Based on minimum of 15 Entrants): 1st Place = \$30. 2nd Place = \$20. *Top-In-Lower-Half* = \$15. *(Class Prize - Rating TBD on-site.

NPCC Schedule August 2019				
DATE	ROUND	EVENT	ROUND TIMES	TYPE
23-Aug	Rounds TBD at site based on number of entrants.	11th Annual NPCC Touch-Move Blitz Championship In Memory of Gary Stevens	Registration: 7:00 to 7:45 PM Games start at 8:00 PM. Please arrive no later than 7:45PM to register.	Round Robin

TIME CONTROL	ENTRY FEE	PRIZES	COMMENTS
G/5;d0	\$7 NPCC Members/ \$10 Non-Members	PRIZES (Based on minimum of 15 Entrants): First Place = \$25 2nd Place = \$15 "Top-in-Lower-Half"* = \$10 *(Class Prize - Rating TBD on-site)	USCF Blitz rated

Position after 13...Ke7! (From p.1)



(Cont. from p.1) 14.Nexf7 [Hoping for Bg5+.] 14...Rg8 [D]



(Alex - I was expecting Rf8, but after the game Dennis said he wanted that square for his King.) [Black should play 14...Rf8!= 15.Bg5+ Bf6 16.Bxf6+ Kxf6] 15.Bg5+ Kf8? [15...Bf6= 16.f4 Bxg5 17.fxg5 Bd7] (Text cont. next col.)

(Cont. from prev. col.)
16.0-0-0!+- [D]



(Alex - I felt like I needed my King to defend the queenside.) 16...Nb4 17.Rhf1 [D]



(Alex - This didn't feel quite right at the time and the computer prefers Kb1.) (Text cont. next col.)

(Cont. from prev. col.) 17...Nd3+

*[17...h6!= 18.Bd2
(18.Bxh6 Bxh6+ 19.Nxh6 Rg6=)
(18.Nxh6 Bxb2+ 19.Kxb2 Rxc4=)
18...Nd3+ 19.Kc2 Bd7 20.Nxc4
(20.Bxh6 Ba4+ 21.b3 Nb4+ 22.Kd2 c3+
23.Ke2 Be8=+)
20...Kxf7 21.Kxd3 Rad8]
18.Rxd3? [White should try 18.Kb1+-]
18...cxd3=+ 19.f4 [D]



[19.Rd1= remains equal.] 19...h6!+-
20.Ne5 [D] (p.3) (Alex - Threatening mate in one.) [20.Nxh6 Bxh6] 20...Bh8! [D] (p.3) (Alex - This was a strong move and at this point I realized that I was in trouble.) 21.Bxh6+ Ke7 22.Ne4 Bd7 (Alex - This move was made in time pressure, and Rxc2 was clearly better.) (Text cont. p.3)

Position after 20.Ne5 (From p.2)



Position after 20...Bh8! (From p.2)



(Cont. from p.2) [Better is 22...Rxb2+ and now ...Bxe5 would win. 23.Bg5+ Kf8 24.Ng6+ Kg8 25.Nxh8 Kxh8] 23.Bg5+= Rxb2! [D]



24.Nxg5 Rc8+ 25.Kd2 Bb5? [D]



(Alex - Bxe5 equals.) [25...Bxe5= 26.fxe5 Rc2+ 27.Kxd3 Rxb2 28.Rf7+ Ke8] 26.Nxd3? [26.Rc1+- Bxe5 27.fxe5] (Text cont. next col)

(Cont. from prev.col.) 26...Bxb2 [26...Rd8= 27.Rf3 Bxb2] 27.Rb1+- Bc3+ 28.Ke3 [28.Ke2!? a6 29.a4+=] 28...Bc6! 29.g4 Rh8 [D]



[29...Ba5+=] 30.h3! Ba5? [30...Rc8+- is a better defense.] 31.Ne5+- [Black must now prevent Ng6+.] 31...Rd8 32.Nxc6+ bxc6 [D]



33.Rb7+ Kf6 [Better is 33...Rd7] 34.Ne4+ Kg6 [Now ...Bb6+ and Black clings on.] 35.h4 [D]



[h5+ is the strong threat.] 35...Bb6+ 36.Ke2 [White threatens h5+ and mate.] 36...Rf8? [D] (Next col.) [36...Rd4] 37.Kf3 [White is clearly winning.] 37...Rf7 38.h5+ Kg7 39.h6+ Kg6 40.Rxf7 Kxf7 [D] (Next col.) 41.Ng5+ Kg8 [Better is 41...Kg6 42.Nxe6 Kxh6] 42.Nxe6 c5 43.Ke4 c4 44.f5 Ba5 [D] (Text cont. next col.)

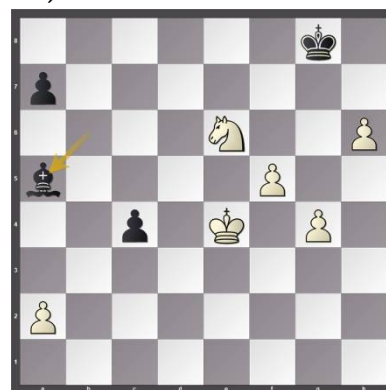
Position after 36...Rf8? (From prev. col.)



Position after 40...Kxf7 (From prev. col.)



Position after 44...Ba5 (From prev. col.)



(Cont. from prev.col.) (Alex - Komodo finds mate in 11 here but it took me a bit longer. No more moves were recorded.) 1-0

Copy and paste the link below into your browser:

<http://view.chessbase.com/cbreader/2019/8/2/Game1056930781.html>

**Game from the NPCC 2019
June G100 Swiss Tournament
Round: 4**

Submitted by Olin with my comments and selected Fritz comments [shown thusly]. (Text cont. p.4)

(Cont. from p.4)

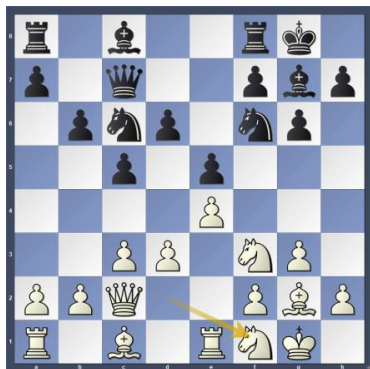
White: Olin Mastin (1525)
Black: Bob Pisciotta (1433)
Date: 6/28/2019

[A05: Réti Opening: 1 Nf3 Nf6]

1.Nf3 Nf6 2.g3 g6 3.Bg2 Bg7 4.d3
[4.0-0 d6 (4...0-0 5.d3 c5 6.Nbd2 Nc6
7.e4 ½-½ (68) Dosedel,J (2085)-Smid,J
(2074) Czechia 2008) 5.d3 0-0 1-0 (42)
Guerrero,C-Canestro,J Caracas 2012]
4...d6 5.Nbd2 0-0 6.0-0 e5 7.e4 [D]



7...c5 8.c3 Nc6 9.Qc2 [Better is
9.Nc4=; 9.Qe2 h6 10.Rd1 Qe7 11.a4 Ne8
12.Nc4 Be6, etc... Espinosa,J (2380)-
Chacon Beltran,J (2160) Villa Clara 1995
1-0 (40)] **9...Qc7N** [9...b5 10.Rd1 Bb7
11.Nf1 b4 12.d4 Qe7, etc Guerrero,C-
Canestro,J Caracas 2012 1-0 (42); 9...h6
10.h3 Be6 11.Re1 Nd7 12.Nf1 f5, etc...
Dosedel,J (2085)-Smid,J (2074) Czechia
2008 ½-½ (68); 9...Bd7 10.Nc4 Be6
11.Ne3 Rc8 12.Bd2 b5, etc... Folch
Fuentes,E (1500)-Boix Pons,C (2022)
Novetle 2008 0-1 (33)] **10.Re1 b6** [Bet-
ter is 10...b5] **11.Nf1 [D]**



11...Bb7 [Black should try 11...d5=+]
12.Bg5 [12.Ne3 was preferable.]
12...h6 13.Bxf6 Bxf6 14.Ne3 Ne7
[Better is 14...Qd8] **15.Rad1[D]** (Next
col.) [15.h4=] **15...Bg7=+** **16.Qb3**
[16.Nh4= is more appropriate.]
16...Bc8 [16...Rad8=+] **17.a3** [17.d4=]
17...Be6 [17...Bb7=+] **18.Nd5 [D]**
(Next col.) [18.Qc2=] **18...Qd7**
[18...Nxd5+ 19.exd5 Bd7] **19.c4**
[19.Nd2=] **19...Rac8** [19...Nxd5+=
20.exd5 Bg4] **20.Qc2** [20.Nxe7+= Qxe7
21.Qa4] **20...f5** (Text cont. next col.)

Position after 15.Rad1 (From
prev. col.)



Position after 18.Nd5 (From
prev. col.)



(Cont. from prev. col.) [20...Nxd5-
+ 21.exd5 Bg4] **21.Nxe7+= Qxe7**
22.exf5 [Better is 22.Nh4 Kh7
23.exf5 gxf5 24.Qe2] **22...Bxf5** [Bet-
ter is 22...gxf5 23.Qe2 f4] **23.Nh4**
Qf6 [D]



24.Nxf5 Qxf5 25.Be4 Qf6 [Black
should play 25...Qg4+=] **26.d4?** [D]



[26.b4+=] **26...Kf7?** [D] (Next
col.)

(Position after 26...Kf7? (From
prev. col.)



(Cont. from prev. col.) [26...cxd4+=
keeps the upper hand. 27.Bd5+ Kh7]
27.dxe5 Qg5? [27...dxe5+- 28.Rd7+
Kg8 29.Bxg6 a6] **28.Bd5+ Ke7**
29.exd6+ Kxd6 30.Be6+ [D]



[Better is 30.Re6+ Kc7 31.Qa4 Qxg3+
32.hxg3 Kb8 33.Qa6 Rf7 34.Rxb6+! Kc7
35.Rc6+ Kd8 36.Rxc8+ Ke7 37.Qe6#]
30...Kc7 [30...Bd4+- 31.Bxc8 Rxc8]
31.Rd7+ [D]



1-0

Copy and paste the link below into
your browser:

<http://view.chessbase.com/cbreader/2019/7/7/Game102449453.html>

**Game from the 13th Annual
Philadelphia Open Tournament
Round: 1**

(Text cont. p.5)

(Cont. from p.4) Submitted by Joe with his comments and selected Fritz comments [shown thusly].

White: Joseph Mucerino (2146)

Black: Brian Tay (1907)

Date: 6/28/2019

*(Please copy and paste the HTML link at the end of this article into your browser to read the complete commentary.)

[A48: 1 d4 Nf6 2 Nf3 g6: Torre, London and Colle Systems] **1.d4 Nf6 2.Nf3 g6 3.Bg5 Bg7 4.Nbd2 0-0 5.e4 d6 6.c3 Nbd7 7.Bc4 c5 [7...h6= 8.Be3 e5] 8.e5+= [D]**



8...Ne8 [8...dxe5 9.dxe5 Ng4 10.e6 Nde5 11.exf7+ Kh8 12.h3 Nxc4 13.Nxc4 Qxd1+, etc... Greenfeld,A (2305)-Gutman,L (2450) Beersheba 1982 1-0 (65)] **9.e6 [D]**



[9.Qe2 dxe5 10.dxe5 Nb6 11.Bb3 Nc7 12.Qe3 Ne6 13.h4 Qc7, etc... Terry Lujan,R (2454)-Lopes Silva,L (2003) Praia da Pipa 2014 1-0 (31)] **9...fxe6** [White is slightly better.] **10.Bxe6+ Kh8 11.Qe2N** (Joe - White would like to somehow fork the Queen and Rook with Bxe7.) [11.h4 Ndf6 12.Bb3 Bg4 13.dxc5 dxc5 14.Qe2 Nd6 15.0-0-0 Qc7,etc... Dorne,W-Pedersen,S (2220) Aalborg 1992 1-0 (42)] **11...cxd4! 12.Nxd4 Nef6** [12...Nc7+=] **13.h4?! [D]** (Next col.) (Joe - The computer didn't like this move. It preferred simply castling.) **13...h6?! [D]** (Next col.) (Joe - There is no reason to weaken the kingside. If 13...Nc5, White cannot continue (Text cont. next col.)

Position after 13.h4?! (From prev. col.)



Position after 13...h6?! (From prev. col.)



(Cont. prev. col.) with his attack with 14.h5, because of 14...Nhx5 15.Rhx5 Bxd4! 16.cxd4 Nxe6.) [13...Nc5= remains equal.] **14.0-0-0** (Joe - Stronger is 14.Qe3.) [White should play 14.Qe3!+] **14...Qa5 15.Nc4+- Qa6 [D]**



[Better is 15...Qa4 15...Qc5; 15...Qc5+ was worth a try.] **16.Qe3? [D]**



(Text cont. next col.)

(Cont. from prev. col.) (Joe - Missing the crushing 16.h5.) [16.h5+- and the rest is easy. 16...gxh5 17.Rxh5 [D]



Analysis Diagram

; 16.h5+- Nc5 17.hxg6 Bxe6 18.Nxe6 Nxe6 19.Qxe6 [D]



Analysis Diagram

16...hxg5 17.hxg5+ Nh5 18.Rxh5+! gxh5 19.Rh1+-][D]



Analysis Diagram

17.Nxe5 dxe5 18.Qxe5 Ng4 19.Qe4 [Hoping for Qxg4.] **19...Bxe6 20.Nxe6 → [D]**



[20.Qxe6? 20.Nxe6 Nxf2 21.Qxa6 bxa6+] (Text cont. p.6)

(Cont. from p.5) **20...Nxf2??** (Joe - Best was 20...Rxf2.) [20...Rxf2+-[D]



Analysis Diagram

21.Rd2! (21.Qxg4 21.Rd2 Bxc3! 22.Rd2 Bxd2+ 23.Bxd2 Qd3=) 21...Rxd2 22.Bxd2 Nf6; **21.Qxg6+-** [D]



(Joe - Now white is winning easily.)
21...Bxc3? [D]



[21...Rg8 22.Be3 Ng4 23.Qxg4 Bxc3] **22.Qxh6+ Kg8 23.Qg6+ Kh8 24.bxc3 Qa3+ 25.Kb1** [D]



25...Qb2+ (Joe - If 25...Qxc3 26.Rd4.) (Joe, email note - (Text cont. next col.)

(Cont. from prev. col.) There, the Rook blocks the a1-h8 diagonal and prevents 26...Qb4+.) [25...Qxc3 26.Rd4 [D]



Analysis Diagram

26.Kxb2 Nxd1+ [D]



27.Rxd1 Rf7 28.Qxf7 Rg8 29.Qh5# [D]



1-0

Copy and paste the link below into your browser:

<http://view.chessbase.com/cbreader/2019/8/13/Game67404234.html>

Game from the 13th Annual Philadelphia Open Tournament

Round: 4

Submitted by Joe with his comments and selected Fritz comments [shown thusly].

* (Please copy and paste the HTML link at the end of this article into your browser to read the complete commentary.) (Text cont. next col.)

(Cont. from prev. col.)

White: Ashrey Mahesh (1953)
Black: Joseph Mucerino (2146)
Date: 6/30/2019

[D45: Semi-Slav: 5 e3]

1.d4 d5 [1...Nf6 2.c4 e6 3.Nf3 d5 4.Nc3 c6 1-0 (56) Georgiev,K (2605)-Nikolov,S (2345) Bankia 1992] **2.c4** [2.e3 Nf6 (2...c6 3.c4 Nf6 4.Nc3 ½-½ (27) Djokic,D-Zlatanovic,N (2065) Nis 2013) 3.c4 e6 1-0 (27) Balogh,F-Vince,V Hungary 2005] **2...e6 3.Nc3 Nf6 4.e3 c6 5.Nf3** [5.a3 Be7 6.Nf3 ½-½ (27) Djokic,D-Zlatanovic,N (2065) Nis 2013] **5...Nbd7 6.a3 Be7** [6...Bd6 is superior.] **7.Bd2** [7.Bd3=; 7.b4 0-0 8.Bb2 b6 9.cxd5 cxd5 10.Bd3 Bb7 11.Qb1 Qc7, etc... Georgiev,K (2605)-Nikolov,S (2345) Bankia 1992 1-0 (56)] **7...0-0** [D]



[7...dxc4 8.Bxc4 b5 9.Bd3 Bb7 10.0-0 a6 11.Rc1 c5 12.Bb1 0-0, etc... Djokic,D-Zlatanovic,N (2065) Nis 2013 ½-½] **8.cxd5?!** [D]



(Joe - I don't know the theory, but I would keep the tension in the center.) [White should try 8.Be2=]

8...exd5+= 9.Be2N [9.Bd3= Re8 10.0-0 Bd6 11.Qc2 c5 12.dxc5 Nxc5 13.Be2 Nfe4 14.Nb5 Bf5, etc... Balogh,F-Vince,V Hungary 2005 1-0] **9...Bd6+- 10.0-0 Ne4 11.Qc2** [11.h3=+] **11...f5** [D] (p. 7) (Joe - The computer doesn't like this move and (Text cont.p.7)

(Position after 11...f5 (From p.6)



(Cont. from p.6) I don't know why. It prefers 11...Re8.) [11...Re8+] 12.b4 [12.Bd3=] 12...a6 13.Rab1 Rf6 14.g3 [D]



14...Rh6! 15.h4?! [D]



(Joe - Those pawns are going to become a target.) 15...Qc7 16.Kg2 [Better is 16.Be1] 16...Ndf6 17.Ng5 [D]



[17.Be1+] 17...Nxf2!-+ [D] (Next col.) (Text cont. next col.)

(Position after 17...Nxf2!-+ (From prev. col.)



(Joe - It's now or never to sacrifice, or else white will get 18.f4 in.) 18.Rxf2 [Rf3 is the strong threat.] 18...Bxg3 19.Rf3? [19.Rf4+ Bxf4 20.exf4] 19...Bxh4 20.Nh3 Rg6+ [Not 20...Ng4 21.Nf4+] 21.Kh1 Ng4 [D]



22.Rf4 Bg3 → [D]



23.Rbf1 Bxf4 24.Rxf4? [24.Nxf4 Rh6+ 25.Kg1] 24...Qe7 25.Bxg4? [D]



(Joe - White is losing no matter what, (Text cont. next col.)

(Cont. from prev. col.) but this just opens up the King more.) [25.Bf1] 25...fxg4 26.Ng1 Be6? [D]



(Joe - Too slow; I wanted to get my other rook into the game. Better is either 26...Rh6+ or 26...Qh4+, take your pick.) [26...Rh6+ [D]



Analysis Diagram

; 26...Qh4+ [D]



Analysis Diagram

27.Be1 Rf8 28.Nce2 [Better is 28.Rxf8+ Qxf8 29.Kg2] 28...Rgf6 [Strongly threatening ...Bf5.] 29.Kg2 [D]



(Text cont. p.8)

(Cont. from p.7) [Better is29.Ng3]
29...Bf5 30.Qd2 g5 31.Rxf5 Rxf5 [D]



(Joe - 32...Qe4+ is even more devastating.) [31...Qe4+ [D]



Analysis Diagram

32.Ng3 R5f6 33.e4 [D]



33...Rf3! [D]



34.Nxf3 gxf3+ 35.Kf2 35...dxe4 [D]
 (Next col.) (Joe - Black has too many pawns.) **36.Qe3 Rf4** [White must now prevent ...Qe6.] **37.Bc3** [Better is37.Qb3+ Qf7 38.Qxf7+ Kxf7 39.a4] (Text cont. next col.)

Position after 35...dxe4 (From prev. col.)



(Cont. from prev. col.) **37...Qe6** [And now ...Qh3 would win.] **38.Nh5 Rg4 39.d5 Rg2+ [D]**



[Black mates.] **40.Kf1 Qh3 41.Nf6+ Kf7 42.Qxe4 Qh1# [D]**



Copy and paste the link below into your browser:
<http://view.chessbase.com/cbreader/2019/8/14/Game24812421.html>



Joe Mucerino at the NPCC 2019 Winter Robin

Other places to play chess:

The below are for friendly off hand non-rated games (clocks optional). Bring chess set.

Monday evenings:

About 6:00 to 9:00 PM, "Starbucks," 10 North Main Street, and / or "Nonno's Italian Coffee Parlor," 6 E. State St., Doylestown

Tuesday mornings :

9:30 AM to Noon at the Pennridge Community Senior Center in Silverdale. Located on route 113 near route 152

Weekdays:

8:00 to 4:00 Daily, Senior Center, 312 Alumni Ave, Harleysville.

Friday Mornings:

10:00 AM up to 2:00 PM
 Indian Valley Public Library, 100 E. Church Ave, Telford

Allentown Center City Chess Club

Offer (from Eric C. Johnson): "For any of our events -- If three or more Lansdale players carpool together -- the designated driver plays for free!"

<http://www.freewebs.com/allentowncentercitychessclub>

This concludes this issue. More games in next issue.

Some pictures from 2019 Winter Robin:



Olin Mastin, Jamie Lee, Sofiya Lysenko, Will Moyer, Justin Xu



Andrew Fleming, Alex MacFarlane, Bob Kampia, Jonathan Xu