

~ En Passant ~

Newsletter of the North Penn Chess Club, Lansdale, PA – Winter 2019, Part 2

E. Olin Mastin, Editor

North Penn Chess Club
500 West Main Street
Lansdale, PA 19446

www.northpennchessclub.org
(215) 699-8418 donfunk@msn.com

This issue features games played in the 40th NPCC Winter Robin Tournament, January, and February, 2019.

The purpose of these newsletters is to include as many games as possible by NPCC players irregardless of the strength of the participants. Thanks to all for submitting games!

Games from the NPCC 2019 Winter Robin Tournament: Round: 1

Submitted by Bill with selected Fritz comments [shown thusly].

White: Steve Atlee (1079)
Black: Bill Campion (1413)
Date: 1/4/2019

[B81: Sicilian Scheveningen: Keres Attack]
1.e4 c5 2.Nf3 d6 3.d4 cxd4 4.Nxd4 a6 5.Nc3 Nf6 6.Be3 e6 7.g4 [D]

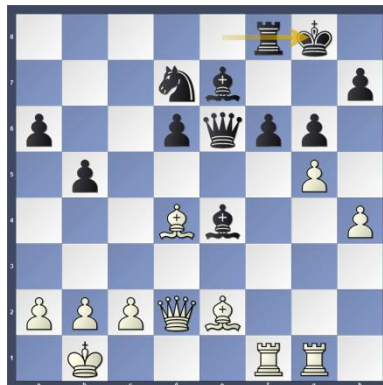


7...Be7 8.g5 Nfd7 9.h4 Nc6 10.Qd2 Nde5 11.Be2 Qc7 12.f4 Nd7 13.0-0-0 b5 14.f5 Nde5 [A valuable piece] 15.Rdf1 Qa5 16.Kb1 [White has an active position] 16...Bb7? [16...Nxd4 17.Bxd4 b4 18.Nd1+] 17.Nb3 [D] (Next col.) [Better is 17.fxe6 the advantage is on the side of White 17...0-0 18.Nf5+] 17...Qc7+ 18.fxe6 [Better is 18.h5 0-0 19.a3+] 18...f6?? [Better is 18...fxe6 is just about the only chance 19.h5 0-0-0+] 19.Nd5 Qc8 20.Nb6 (Text cont. next col.)

Position after 17.Nb3 (From prev. col.)

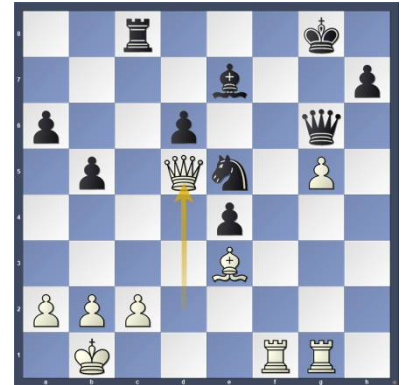


(Cont. from prev. col.) [Better is 20.gxf6 nails it down 20...Bxf6 21.Rxf6+~] 20...Qxe6 21.Nxa8 Bxa8 22.Bh5+ g6 23.Be2 Nd7 [23...fxg5 24.Bxg5 Nf7 25.Bxe7 Qxe7 26.h5+~] 24.Nd4 [24.h5!? Rf8+~] 24...Nxd4 25.Bxd4 Bxe4 26.Rhg1 0-0 [D]

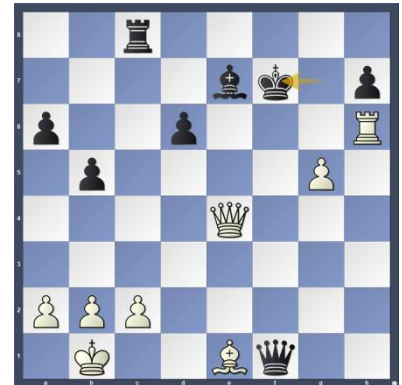


[26...Ne5 27.gxf6 Bxf6+] 27.h5 [27.gxf6 Bxf6 28.Bg4 Qc4 29.Bxf6 Rxf6+~] 27...f5 [27...fxg5!? 28.Rxf8+ Nxf8+~] 28.hxg6 Qxg6? [28...hxg6 29.Bf3+] 29.Be3?? [Weakening the position.] [29.Bf6!? seems even better 29...Kf7 30.Bd3 Ke8 31.Bxe4 fxe4+] 29...Rc8? [Better is 29...Ne5!+~] 30.Bd3+- Ne5? [30...Bxd3 31.Qxd3 Ne5 32.Qxf5 Rc4+~] 31.Bxe4 fxe4 32.Qd5+ [D] (Next col.) 32...Kg7 [32...Kh8 cannot undo what has already been done 33.Rh1 Rf8 34.Bd4 Rxf1+ 35.Rxf1+~] 33.Qb7 Qe6 34.Rh1 Nf3 [34...Kg8 otherwise it's curtains at once 35.Rf6! Decoy: f6 35...Bxf6 36.Qxh7+ Kf8 (Text cont. next col.)

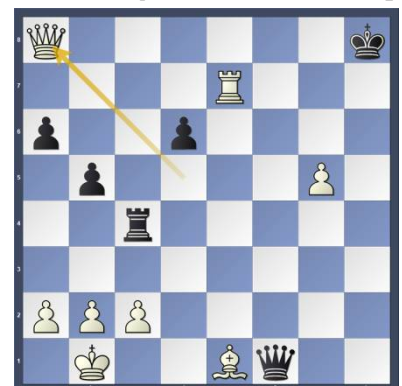
Position after 32.Qd5+ (From prev. col.)



(Cont. from prev.col.) 37.gxf6 Ke8+~] 35.Rh6 Qf7 36.Qxe4 Nd2++ 37.Bxd2 Qxf1+ 38.Be1 Kf7 [D]



39.Rxh7+ Kg8 40.Rxe7 [40.Qg6+ Kf8 41.Rh8#] 40...Rc4 41.Qd5+ [41.Qg6+ Kf8 42.Re8#] 41...Kh8 42.Qa8+ [D]



1-0
Copy and paste the link below into your browser:
<http://view.chessbase.com/cbreader/2019/1/28/Game1503483296.html>

Round: 1

Submitted by Bernie with his comments and selected Fritz comments (as edited) [shown thusly].

White: Don Funk (1531)

Black: Bernie Overly (1533)

Date: 1/4/2019

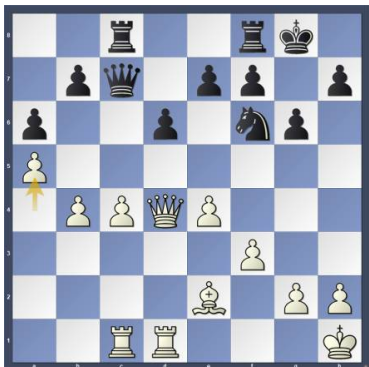
[E81: King's Indian: Sämisch: 6th move deviations (including 6 Be3 c6)] **1.d4 Nf6 2.c4 g6 3.Nc3 Bg7 4.e4 d6 5.f3 O-O 6.Be3 Nbd7 7.Bd3 c5 8.Nge2 Rb8 9.O-O Ne8 [D]**



(Bernie - A poor plan. I assumed Don would not play Qd2. Better might have been Qa5 or b5. Yes, b5 sacs a pawn but it opens lines for attack on the Queenside.) **10.Qd2 cxd4** [White is slightly better.] **11.Bxd4** [11.Nxd4 is interesting. 11...a6 12.Be2 Nef6 13.Rad1 Re8 14.g4] **11...Bxd4+ 12.Nxd4 Ne5 13.Be2 a6 14.Rfd1 Bd7 15.Kh1 Nc7 16.a4 Ne6 [D]**



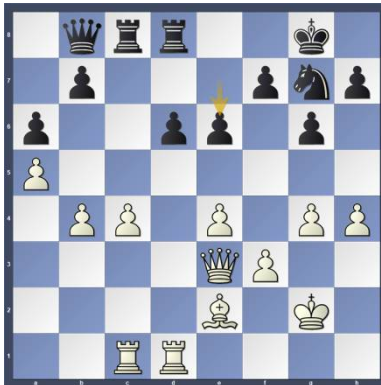
17.Nxe6 Bxe6 18.Nd5 Bxd5 19.Qxd5 Nd7 [19...Qb6=-] **20.b4+= Nf6 21.Qd4 Qc7 22.Rac1 Rbc8 23.a5 [D]**



cont. next col.)

(Text

(Cont. from prev. col.) (Bernie - That b-pawn is a problem because of my poor plan early in the game. White gets the attack on the Queenside and I am on the defense.) **23...Rfd8 24.Qe3 Qb8 25.g4 Ne8 26.h4 Ng7** [26...e5=] **27.Kg2** [27.f4!+=] **27...e6 [D]**



(Bernie - Not the sharpest move. The fear of having a backward pawn made me choose this move over 27...e5. Playing my way back into shape and it may take a dozen games before my thinking process changes.) [27...e5= remains equal.] **28.f4** [Initiative - White is pushing.] **28...f5 29.Bf3** [White should try 29.h5+- 0.91/20 gxh5 30.exf5 (30.gxh5 fxe4 31.Qxe4 d5+-) 30...exf5 31.gxh5] **29...e5?** [29...fxg4+= 30.Bxg4 Rf8] **30.exf5+- gxh5 31.Bd5+ Kh8 [D]**



32.g5 [32.fxe5!+- Strongly threatening e6. 32...dxe5 33.h5] **32...Rc7** [32...Re8+-] **33.Rf1** [33.fxe5+- And now g6! would win. 33...dxe5 34.Qxe5] **33...Re7+- 34.Qh3 e4?** [34...Rf8+- is a better defense.] **35.h5 Rf8?** [35...Ne6 36.Qc3+ Kg8] **36.g6?** [36.h6+- Rff7 37.Bxf7 Rxf7 38.hxg7+ Kg8 39.Rh1 Rxg7 40.Qxf5] **36...h6 37.Bf7** [37.Rb1+-] **37...Qd8 38.Rcd1 Qc7 [D]** (Next col.) (Text cont. next col.)

Position after 38...Qc7 (From prev. col.)



(Cont. from prev. col.) [Better is 38...Rxf7+= 39.gxf7 Rxf7] **39.Qc3** [Better is 39.Bd5!] **39...b6** [39...Rexf7+- 40.gxf7 Rxf7] **40.axb6+- Qxb6 41.Qf6** [41.Rd5+-] **41...Rd7+- 42.c5** [42.Qb2+-] **42...Qxb4+= 43.Rxd6** [43.cxd6+- e3 44.Qe5] **43...Qa4** [43...Rxd6= keeps the balance. 44.cxd6 Qd2+ 45.Rf2 Qd1] **44.Rfd1** [Not 44.Rxa6? Rd2+ 45.Rf2 Rxf2+ 46.Kxf2 Qc2+ 47.Kg3 Qxc5+-; 44.Qc3+- Rxd6 45.cxd6] **44...Rxd6=** (Bernie - Sorry but I am not playing at a level where I understand Fritz calling the position equal.) **45.Qxd6 [D]**



(Bernie - I am tired and cannot see a way out so I resign the game.)

1-0

Copy and paste the link below into your browser:

<http://view.chessbase.com/cbreader/2019/1/27/Game1456144765.html>

Round: 1

Submitted by Olin with selected Fritz comments [shown thusly].

White: Olin Mastin (1517)

Black: Jacob Lee (1533)(Age 10)

Date: 1/4/2019

[A08: King's Indian Attack] **1.Nf3 d5 2.g3 Nf6 3.Bg2 g6 4.O-O Bg7 5.d3 c5 6.c4 d4 [D]** (p.3) (Text cont. p.3)

(Position after 6...d4 (From p.2)



(Cont. from p.2) 7.Nbd2 Nbd7? [D]



[7...Nc6=+] 8.b3 [8.b4!+-] 8...0-0
[8...a5=] 9.Bb2 [9.b4!+=] 9...Rb8
10.Rb1 e5 11.Re1 [11.e3=] 11...Re8
[11...Qc7=+] 12.Nf1 [12.e3=] 12...Qc7
13.h4 [D]



[13.N1d2=] 13...h5 [13...b6=+] 14.N1h2
[14.e3=] 14...b6 [14...a6=+] 15.Nd2
[15.Ng5= Keeps the balance.] 15...Bb7
[D]

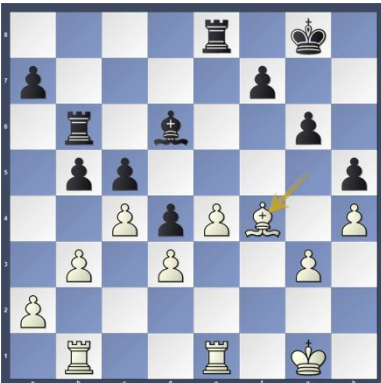


(Text cont. next col.)

(Cont. from prev.col.) [15...Bh6=+]
16.Bxb7+= Qxb7 17.e4 Qc7
18.Ndf1 [18.Kg2+= Feels stronger.]
18...Nf8 [18...Ra8=+] 19.Bc1 Ne6
20.Bd2 Bf8 [20...a6=+] 21.Qc1
[21.Nf3=] 21...Bd6 [21...a6=+]
22.Nf3 Qd7 23.Ng5 b5 [23...Nd8-
+] 24.Nxe6 Qxe6 25.Bh6
[25.cxb5= Rxb5 26.Bg5] 25...Qh3
[D]



[25...a6=+] 26.Nh2 [26.Bg5= Nh7
27.cxb5] 26...Ng4 [26...b4=+]
27.Nxg4+= Qxg4 28.Qg5
[28.cxb5+= stays ahead. 28...Be7
29.Qd1] 28...Qxg5 [28...Qf3+-
29.Qd2 Kh7] 29.Bxg5= Rb6
[29...a6=] 30.f4 [30.cxb5+= Rxb5
31.Rbc1] 30...exf4 31.Bxf4 [D]

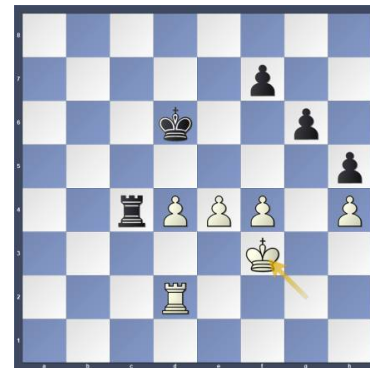


31...Bxf4 32.gxf4 bxc4 33.bxc4
Rxb1 [33...Reb8+= 34.Rxb6 Rxb6]
34.Rxb1 [Endgame KR-KR]
34...Re7 [34...Re6!-=] 35.Rb8+
[35.Rb5=+] 35...Kg7+= 36.Rc8 Re6
37.Rxc5 [And now a4 would win.]
37...Ra6 38.Rd5 Rxa2 39.Rxd4
a5 40.c5 [40.e5+=] 40...a4? [D]
(Next col.) [40...Rc2= and Black
stays safe.] 41.c6 [41.e5!+- is the
precise move to win.] 41...a3+-
42.c7 [White should try 42.Ra4+-]
42...Rc2= 43.Ra4 a2 [43...Rxc7=
remains equal. 44.Rxa3 Rc2]
44.Rxa2!+- Rxc7 [44...Rxa2 (Text
cont. next col.)

Position after 40...a4? (From prev. col.)



(Cont. from prev.col.) 45.c8Q]
45.Rd2 Kf6 46.Kf2 Ke6 [Better is
46...Rc3] 47.Kf3 [47.d4+-] 47...Rc3
[47...Rc1!-=] 48.Kg2 [48.Ke3+-]
48...Kd6 [48...Ra3+=] 49.d4 [49.Kf3+-]
49...Rc4 50.Kf3 Rc3+ 51.Kg2 Rc4
52.Kf3 [D]



½-½

Copy and paste the link below into your browser:

<http://view.chessbase.com/cbreader/2019/1/7/Game87965125.html>

Round: 1

Submitted by Mike with his comments (as edited) and selected Fritz comments [shown thusly].

White: Stan Ward (1492)

Black: Michael O'Gara (1652)

Date: 1/10/2019 (Makeup Date)

[A60: Modern Benoni: Early Divergences]

1.d4 Nf6 2.c4 c5 3.d5 e5 [D]



(Text cont. p.4)

(Cont. from p.3) 4.dxe6 fxe6 5.Bg5 Be7 6.Nc3 h6 7.Bh4 0-0 8.e3 b6 9.Be2 Bb7 10.Bf3 Qc8 [D]



11.Bxb7 Qxb7 12.Qf3 (Mike: Nf3 is preferred here, just need to see after White has 14.Nh4 as a resource and a better game.) [12...g5 13.Bg3 g4] 12...Nd5 [12...Nc6!? Exploiting the potential discovers on the Queen, White must lose more tempi. 13.Qe2 d5=+] 13.Qe4= Bxh4 14.Nf3 [Better is 14.Nh3!?!= is worth consideration, bringing the Knight to f4 to challenge d5] 14...Bf6+- 15.cxd5 Bxc3+ 16.bxc3 exd5 17.Qd3 Na6 18.0-0 Rae8 19.Rad1 Nc7 20.c4 Qa6 [D]



[20...dxc4 21.Qxd7 b5 22.h3+-] 21.Qc2 Qxc4+- 22.Qg6? [Better is 22.Qxc4 dxc4 23.Rxd7 Rf7+-] 22...Re6 23.Qh5 Qe4 24.Nd2 Qf5 25.Qe2 Rg6 26.e4 dxe4 27.Nxe4 Qe6 [D]



[Better is 27...Re6 it becomes clear that Black will call all the shots 28.Qf3 Qxe4 29.Qxe4 Rxe4 30.Rxd7 Nb5+-] (Text cont. next col.)

(Cont. from prev. col.) 28.Rd6 Qf7 29.Rfd1 Rxd6 30.Rxd6 Re8 [Better is 30...Ne8 and Black can already relax 31.Rd3 d5 32.Ng3+-] 31.Qg4 Re6 [Better is 31...Nb5 keeps an even firmer grip 32.Rd1 d5+- (Mike: I saw this variation if the idea that if White takes with 32.Rxh6 trying to exploit the pin, Black has 32...Rxe4 with a deflection. I was worried about White counter-play so my past few moves are about shutting down White's access.) 32.Rxd7 [D]



[A very nice try, which unfortunately doesn't work due to back rank issues.] 32...Qxd7 33.Nf6+ Kf7 34.Ne4 [34.Nxd7?? is impossible because of the following mate in 1 34...Re1#] 34...Qe7 [Better is 34...Qd4 might be the shorter path 35.Qf4+ Kg8 36.h3+-] 35.Qf5+ Qf6! [Deflection: e4] 36.Qg4 [36.Nxf6 Re1# Mate at attack Deflection; with the idea 36.-- Qxf5 Wins material] 36...Qa1+ [D]



(Mike: White resigns with checkmate coming up.) 0-1 Copy and paste the link below into your browser: <http://view.chessbase.com/cbreader/2019/1/29/Game1597981656.html>

Round: 2

Submitted by Bill with selected Fritz comments [shown thusly].

White: Bill Champion (1413)

Black: Gary Stevens (1200)

Date: 1/11/2019

[D00:1 d4 d5: Unusual lines] 1.d4 d5 2.Bg5 h6 3.Bh4 g5 4.Bg3 f6 [D]



5.e3+- Be6 6.Bd3 Nc6 7.Nd2 [7.h4 Bf7+-] 7...Qd7 8.Nb3 b6 9.Ne2 h5 10.h4 g4 [Black gains space] [10...Bf7 11.Nc3+-] 11.Nf4+- 0-0-0 [11...Bf7 12.Ng6 Rh6 13.Nxf8 Kxf8 14.c3+-] 12.0-0 [12.Nxe6 Qxe6 13.Rc1 f5+-] 12...Nb4? [12...Bf7 13.Bb5 e6 14.Qe2+-] 13.a4 [D]

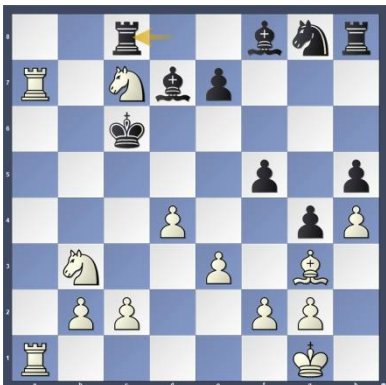


[Better is 13.Bb5 Qxb5 14.Nxe6+-] 13...Nxd3?? [The position was bad, and this mistake simply hastens the end.] [13...Bf5 14.a5 Nxd3 15.axb6 cxb6 16.cxd3 e5 17.dxe5 fxe5+-] 14.Qxd3+- f5 [14...Bf5 15.Qa6+ Kb8+-] 15.a5 [Better is 15.Qa6+ seems even better 15...Kb8 16.Nxe6 Qc8 17.Bxc7+ Ka8+-] 15...Qc6 16.Qa6+ Qb7 [16...Kd7 does not improve anything 17.Qxa7 Ke8 18.Nxe6 Qxe6 19.Bxc7+-] 17.axb6 [D] (p.5) 17...Qxa6 [17...axb6 does not help much 18.Nxe6 Qxa6 19.Rxa6+-] 18.Rxa6 [Better is 18.bxa7 and White can already relax 18...Qxa7 19.Rxa7+-] 18...Kb7 [18...cxb6 is one last hope 19.Nxe6 Kd7 20.Nxd8 Kxd8 21.Rxa7 Nf6+-] 19.Rxa7+ Kxb6 20.Rfa1 Bd7 21.Nxd5+ Kc6 22.Nxc7 (Text cont. p.5)

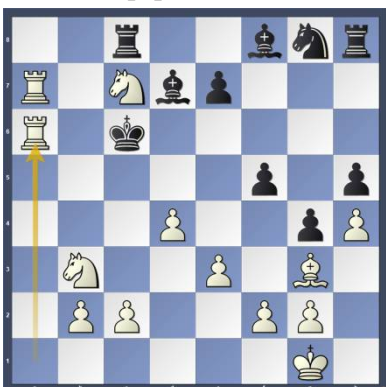
Position after 17.axb6 (From p.4)



(Cont. from p.4) [22.c4 Bc8 23.Rxc7#] 22...Rc8 [D]



[22...Bc8 is not the saving move] 23.R1a6# [D]



1-0

Copy and paste the link below into your browser:

<http://view.chessbase.com/cbreader/2019/2/8/Game521190328.html>

Round: 2

Submitted by Terance with his comments (as edited) and selected Fritz/*Stockfish comments [shown thusly].

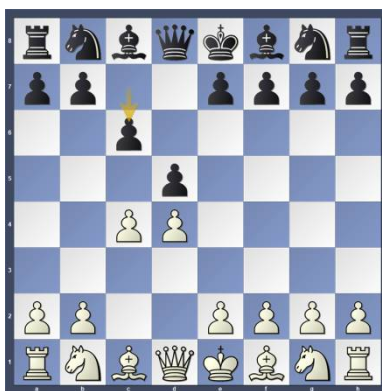
White: Terance Hall (1870)

Black: Robert Kampia (1700)

Date: 1/11/2019

*(Please copy and paste the HTML link at the end of this article into your browser to read the complete Stockfish comments.) (Text cont. next col.)

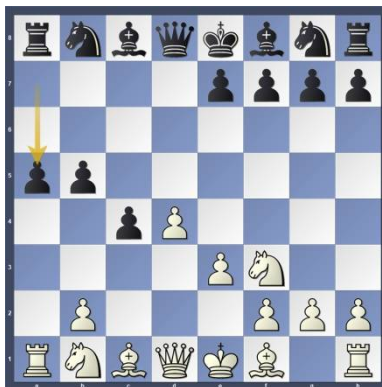
(Cont. from prev. col.) [D11: Slav Defense: 3 Nf3 sidelines and 3...Nf6 4 e3 Bg4] 1.d4 d5 2.c4 c6 [D]



(Terance: The Slav, Kampia's go to defense which I suspected.) 3.Nf3 dxc4 4.a4 (Terance: e3 can be played here also but can transpose also.) [*Stockfish: 4.e3 b5 5.a4 Nf6 6.axb5 cxb5 7.Nc3 Bd7 8.Ne5 a6, etc...] 4...b5?! [D]



(Terance: This rather surprised me as it is not good to try to hold on to the pawn. Black will lose time and development.) 5.axb5 cxb5 6.e3 a5?! [D]



(Terance: Again, I was surprised as only three moves should be considered for development, Nf6, e6, and Bb7. This is a bold move stating that Black wants to run his Queenside pawns down and win! How to stop this?) (Please see next move.) [*Stockfish: 6...Nf6 7.b3 e6 8.bxc4 bxc4 9.Bxc4 Bd6 10.0-0 0-0, etc...] 7.b3 [D] (Next Col.) (Text cont. next col.)

(Position after 7.b3 (From prev. col.)



(Cont. from prev. col.) (Terance: This is a key move ((Ne5 works also)) to break up the pawns in these kinds of positions. Do not be tempted to play Nc3 as this gives Black what he wants.) 7...e6 8.Bd2 (Terance: Best was to play bxc4 and if Black plays Bb4 then Bd2. I played Bd2 just to stop Black from going to b4.) 8...Bb7= [D]



9.bxc4 b4 [White has a new passed pawn: c4. Black has a new protected passed pawn: b4] 10.Be2 (Terance: I was not too happy about my position as I felt that I missed something in the position. I felt c5 should be the move, but I notice that e4 was too weak. Therefore, I put together a plan to get rid of the Bishop on b7. So, I put my Bishop on e2 instead of d3 (to control e4) so I can move my Knight and play Bf3.) [*Stockfish: 10.c5 Ne7 11.Bc1 g6 12.Nbd2 Bg7, etc...] 10...Nf6 11.0-0 Be7 12.Ne5?! (Terance: The engines do not like this move, but it was part of my plan. You know the saying "a bad plan is better than no plan.") [*Stockfish: 12.c5 0-0 13.Bc1 Qc7 14.Nbd2 Rd8, etc...] 12...0-0 13.Bf3 13...Qc7 14.Bxb7 Qxb7 (Terance: Plan completed! The light square bishop is gone!) 15.Qb3? (Text cont. p.6)

(Cont. from p.5) (Terance: This seems to be a blunder to Stockfish but it must be positional, but as a human I do not see it. c5 was best.) [15.Bc1 Nbd7 16.Nd3 Rfd8+] **15...Rd8?!** (Terance: A better move was to develop the Knight on b8 to challenge my active Knight on e5.) [15...Nc6! 16.Nd3+] (*Stockfish: 16.f4 Qa6 17.Qc2 Rfc8 18.Qa4 Ne4, etc...) **16.Nc3++ [D]**



(Terance: Tactically, now was the time to develop my Knight.) **16...Ne4?!** (Terance: Best was to develop with Nbd7 to keep an edge.) [*Stockfish: 16...Nbd7 17.Nf3 Bd6 18.Bc1 Ne4 19.Nxe4, etc...] **17.Nxe4= [D]**



(Terance: Now White has the initiative! The Queen is drawn away from the Queenside and can only return via the light squares. This means I can attack the dark square pawns on the Queenside by using my Bishop, Rook, and Queen as tactical threats against them.) **17...Qxe4 18.Ra4** (Terance: Simple plan to double up on a5 and pressure on b4. I did think of playing f3 here but I can do this later.) **18...Bf6 19.Nd3?! [D]**



cont. next col.)

(Text

(Cont. from prev. col.) (Terance: As soon as I played this I knew it was not good as I immediately saw Bxd4! for Black. Always be suspicious of any hanging pieces in the same file as a Rook as there are usually some tactics involved.) [Better is 19.f3 Qb7 20.Nd3=] **19...Nd7?** [There were better ways to keep up the pressure.] [Better is 19...Bxd4 20.Bxb4 axb4 21.Rxa8 Qxa8 22.exd4 Qa3 23.Qxa3 bxa3+] **20.Rfa1+= Be7** **21.Rxa5+- Rxa5 22.Rxa5 f6?!** (Terance: There were several ways to prevent a back rank weakness. h6 was better.) **23.f3** (Terance: With tempi, as the b-pawn is going nowhere.) **23...Qc6 24.Nxb4** (Terance: Slightly better was c5 and Bxb4, but I played Nxb4 to trade down more pieces.) [*Stockfish 24.c5 Kf7 25.Ra7 Re8 26.Nxb4 Qb5 27.Qa2 Nf8, etc...] **24...Bxb4 25.Qxb4 Rb8** [25...Nf8 a fruitless try to alter the course of the game 26.Ra7+] **26.Rb5 [D]**

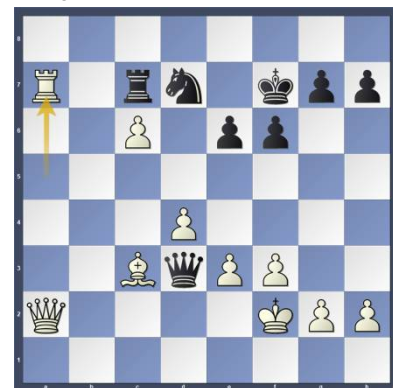


(Terance: My intuition kept telling me to play Qe7 which was much stronger, but I was running low on time so I played a more practical move which is also winning.) [Better is 26.Qe7 and the result of the game is clear: White will win 26...h6 27.Ra7 Rb7 28.Rxb7 Qxb7 29.Qxe6+ Kf8 30.Qd6+ Kg8+] **26...Ra8 27.Bc3** (Terance: To discourage any infiltration by Black's Rook.) **27...Ra6 28.c5** (Terance: I do not know why I did not play e4 which was simple. I was in some time pressure and trying to shut out the Knight from b6.) [*Stockfish 28.e4 h6 29.c5 Kh7 30.Qc4 Qc7 31.Rb1 Qc, etc...] **28...Ra7** [28...f5 29.Rb7+] **29.Qb3** (Terance: I played this to keep Black's rook from going to a2 and allowing my Bishop on c3 to go to a5, and b6 if needed.) **29...Kf7 30.Kf2 Qa6** [30...f5+] **31.Ra5 [D]** (Next col.) (Text cont. next col.)

(Position after 31.Ra5 (From prev. col.)

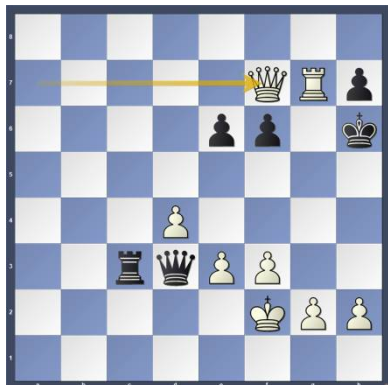


(Cont. from prev. col.) **31...Rb7 32.Qa2** [Better is 32.Qa4 secures victory 32...Qd3 33.c6 Nb6 34.cxb7 Nxa4+] **32...Qd3 33.c6** (Terance: Playing sharp in time pressure.) [Better is 33.Ra3 makes it even easier for White 33...Nb8 34.e4+] **33...Rc7??** [The position was bad, and this mistake simply hastens the end.] (Terance: Here I was worried about Rb1 and did not know if Black had a perpetual once my King gets to the g and h-files.) [33...Rb1 34.cxd7 Rf1+ 35.Kg3 Qg6+ 36.Kh3] (*Stockfish: 36.Kh4 Qh6+ 37.Rh5 g5+ 38.Kg4 f5+ 39.Kg3 Qxh5, etc...) **34.Ra7?! [D]**



(Terance: My initial plan was to play cxd7 Rxc3 d8=N+. However, I did have enough time to check all the variations to keep Black's King in check. I did not want to allow Black to have a perpetual check.) [Better is 34.cxd7 seems even better 34...Rxd7] (*Stockfish: 34...Rxc3 35.d8N+ Kf8 36.Qxe6 Rc2+ 37.Kg3 Qg6+, etc...) **34...Rxc6??** [Black falls apart.] (Terance: Rxa7 would have given Black the best chance to draw a pawn down if possible.) [Better is 34...Rxa7 35.Qxa7 Qc2+ 36.Bd2 Qxc6+] **35.Rxd7++- Kg6 36.Qa7 Rxc3 37.Rxg7+ Kh6** (Terance: Here is the key position!) ((Text cont. p.7)

(Cont. from p.6) **38.Qf7?=[D]**

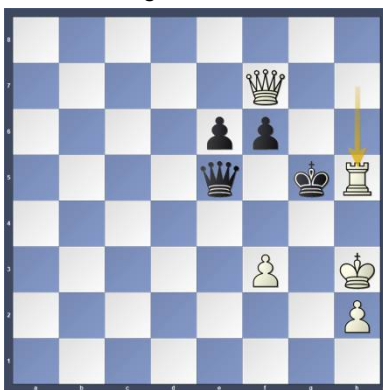


(Terance: In severe time pressure, I played this move which allows Black to draw the game. All I had to do is play Kg3 with an easy win.) [Better is 38.Kg3! and White has reached his goal 38...Qg6+] (*Stockfish: 38...Qf5 39.Qf7 Rc8 40.Rg4 Qg6 41.Rxg6+ hxg6, etc...) **38...Qxe3+= 39.Kg3 Qe1+ 40.Kh3 Rxf3+ (Terance: The only way to keep the perpetual.) 41.gxf3 Qf1+ 42.Kg3 Qg1+ 43.Kh3 Qf1+ [D]**



[Twofold repetition.] (Terance: Black offers a draw. I knew it was a draw, but I wanted Black to fight for it and hoping that he will make a mistake. Taking the Rook on g7 would allow me to pick up the e-pawn, but still may be a draw.) **44.Kh4 [White has a mate threat.] (Terance: This was a risky move, but I took the time and calculated all the variations even the ones where I drop my Rook, but they all let to a draw. There was a variation that Black may be tempted to take a pawn but that loses so I played on with Kh4.) 44...Qf2+ 45.Kg4 Qxd4+?? (Terance: This was what I was hoping for, now White has a clear win!) [Better is 45...Qg1+ would save the game.] 46.Kh3! [D] (Next col.) (Terance: No more checks!) 46...Qe5 [46...Qd3 is no salvation 47.Qxf6+ Qg6 48.Rxg6+ hxg6 49.Kh4 Kh7 50.Kg5 (Text cont. next col.)**

(Cont. from prev. col.) 50...e5
51.Qxg6+ Kh8 52.Kf6 e4 53.Qg7#
47.Rxh7+ Kg5 48.Rh5+ [D]



(Terance: Black resigns!) **1-0**
Copy and paste the link below into your browser:
<http://view.chessbase.com/cbreader/2019/2/8/Game524362234.html>

Round: 3

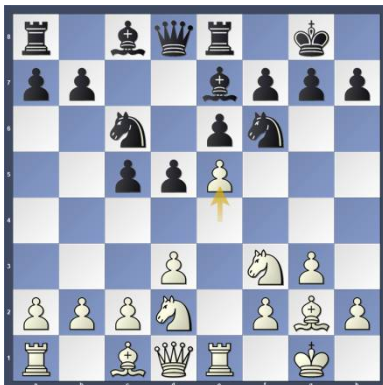
Submitted by Olin with selected Fritz comments [shown thusly].

White: Olin Mastin (1517)

Black: Don Funk (1533)

Date: 1/18/2019

[C00: French: Unusual White 2nd moves] **1.Nf3 Nf6 2.g3 d5 3.Bg2 e6 4.0-0 c5 5.d3 Be7 6.Nbd2 Nc6 7.Re1 0-0 8.e4 Re8 9.e5 [D]**



9...Nd7 10.Nf1 Qc7 11.Bf4 Nf8 12.h4 Ng6 13.Qd2 [D]



13...Nxf4 14.Qxf4 f6 15.c3 fxe5 16.Qg4 Rf8 17.Re2 Bd7 (Text cont. next col.)

(Cont. from prev. col.) **18.Rae1 Rf5 19.Ne3 Rf6 20.Bh3 [Better is 20.Qh3] 20...Raf8+ [D]**



[Aiming for ...h5.] **21.Nxd5 [21.Ng5+ keeps fighting. 21...h6 22.Nxd5 exd5 23.Qxd7 Qxd7 24.Bxd7 hxg5 25.hxg5] 21...exd5+ 22.Qxd7 Qxd7 23.Bxd7 Rxf3 24.Bxc6? [24.Be6+ Kh8 25.Bxd5] 24...bxc6 25.Rxe5 Bd6 [25...Rxf2 26.Rxe7 R2f3 27.Kg2=] 26.Re6 R3f6 [Stronger than 26...Rxf2 27.Rxd6 Rxb2 28.Rxc6=] 27.Rxf6 Rxf6 [Less strong is 27...gxf6 28.Re6#] 28.Re7+ Rf8 29.Re6 Rd8 30.Kg2 Kf7 31.Re3 Re8 32.Rf3+ Kg6 33.Kf1 Rf8 34.Re3 Rf6 35.Ke2 h5 36.Re8 c4 37.dxc4 dxc4 38.Ra8 [38.Re4 was worth a try.] 38...Bc5 39.Rc8? [39.f3 is a better defense.] 39...Rxf2+ 40.Kd1 Rf6 41.Ra8 [Better is 41.Re8] 41...Rf1+ 42.Ke2 Rf2+ 43.Kd1 Rxb2 44.Rc8 Rb6 45.Ke2 Rb2+? [45...Bd6+ 46.Re8 Rb2+ 47.Kf3 Kf5] 46.Kf3? [D]**



[46.Kd1=] **46...Rf2+ 47.Ke4 Rf6 48.a4 Re6+ 49.Kf3 Kf5 50.Kg2 Kg4 51.Rg8 g6 52.Rg7 Kf5 53.Rf7+ Rf6 54.Rc7 Ke4 [Better is 54...Kg4 55.Rc8 Rf2+ 56.Kg1 Kxg3 57.Rxc6 Rf5+ 58.Rxc5 Rxc5 59.a5 Re5 60.Kf1 a6 61.Kg1 Re1#] 55.Rc8 Kd3 56.Rd8+ Kxc3 [D] (p.8) 0-1**

Copy and paste the link below into your browser:
<http://view.chessbase.com/cbreader/2019/2/1/Game1873111671.html>

(Position after 56...Kxc3 (From p.7)



Round: 3

Submitted by Bernie with his comments (as edited) and selected Fritz comments [shown thusly].

White: Will Moyer (1464)

Black: Bernie Overly (1533)

Date: 1/18/2019

[A16: English Opening: 1...Nf6 with ...d5]

1.c4 Nf6 2.Nc3 g6 3.b3 Bg7 4.d4 d5 [D]



5.cxd5 Nxd5 6.Nxd5 Qxd5 7.Bb2 0-0 8.e3 [Black is slightly better.] 8...b5

(Bernie - b5 is part of a bad plan. In a few moves I thought Bc4 might allow White to double my pawns. The thematic c5 would have opened the center and allowed Black a better endgame position.)

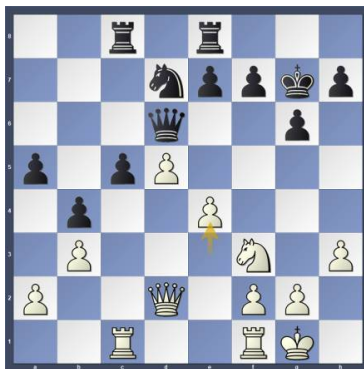
[8...c5=+] 9.Nf3 Bg4 10.Be2 Nd7 11.h3 Be6 12.0-0 Rac8 13.Ba3 Rfe8 14.Rc1 a5 [D]



(Text cont. next col.)

(Cont. from prev. col.)

[14...Qb7+=] 15.Qd2 [15.e4!+- 1.07/18 Qb7 (15...Qxe4 16.Bxb5) 16.d5 Bxd5 17.Qxd5 Qxd5 18.exd5] 15...b4+= 16.Bc4 Qd6 17.Bxe6 Qxe6 18.Bb2 c5 19.d5 Qd6 20.Bxg7 Kxg7 21.e4 (Initiative) [D]



[White has good play.] 21...Kg8 22.Rfe1 Ne5 23.Nxe5 Qxe5 24.Qe3 Qd6 25.Rc4 Rc7 26.Rd1 e6? [D]



(Bernie - I was planning to play f6 for a few moves. I guess I was tired and in my calculations I didn't see the pawn. Not to take anything away from Will's play. He played at a very high level and I didn't.) [Black should try 26...f6=+] 27.e5+- exd5? [27...Qd7] 28.exd6 [D]



(Bernie - It's going to take a few more games to play my way into form.) 1-0 Copy and paste the link below into your browser:

<http://view.chessbase.com/cbreader/2019/2/2/Game35750484.html>

Other places to play chess:

The below are for friendly off hand non-rated games (clocks optional). Bring chess set.

Monday evenings:

About 6:00 to 9:00 PM, "Starbucks," 10 North Main Street, and / or "Nonno's Italian Coffee Parlor," 6 E. State St., Doylestown

Tuesday mornings :

9:30 AM to Noon at the Pennridge Community Senior Center in Silverdale. Located on route 113 near route 152

Wednesday evenings :

7:30 to 10:00 PM, "Christ Reformed Church at Indian Creek" located at 171 Church Road (intersection with Cowpath Road), Telford. (Temporarily closed until further notice.)

Weekdays:

8:00 to 4:00 Daily, Senior Center, 312 Alumni Ave, Harleysville.

Friday Mornings:

10:00 AM up to 2:00 PM Indian Valley Public Library, 100 E. Church Ave, Telford.

Allentown Center City Chess Club

Offer (from Eric C. Johnson): "For any of our events -- If three or more Lansdale players carpool together -- the designated driver plays for free!"

<http://www.freewebs.com/allentowncentercitychessclub>



Mastin vs. Moyer



Hall vs.Curtis; Pisciotta vs.Campion
This concludes this issue. More games in next issue.