

~ En Passant ~

Newsletter of the North Penn Chess Club, Lansdale, PA – Summer 2018, Part 4

E. Olin Mastin, Editor

North Penn Chess Club
500 West Main Street
Lansdale, PA 19446

www.northpennchessclub.org
(215) 699-8418 donfunk@msn.com

This issue features games played in July thru August.

The purpose of these newsletters is to include as many games as possible by NPCC players irregardless of the strength of the participants. Thanks to all for submitting games!

Games from the NPCC 2018 June-July Swiss Tournament: Round: 3

Submitted by Olin with selected Fritz/Stockfish* comments [shown thusly].

White: Olin Mastin (1503)

Black: Tyler Dolan (720)

Date: 7/6/2018

*** (Please copy and paste the HTML link at the end of this article into your browser to read the complete Stockfish comments.)**

[D02: 1 d4 d5 2 Nf3 sidelines, including 2...Nf6 3 g3 and 2...Nf6 3 Bf4] **1.d4 Nf6 [1...b5] 2.Nf3 e6 3.Bf4 d5 4.e3 Nh5** *[Stockfish 9: 4...c5 5.Nbd2 Nc6 6.c3 Be7 7.Ne5 Nxe5, etc...] **5.Bg3 [D]**



*[Stockfish 9: 5.Be5 Nd7 6.c4 Be7 7.Nc3 c6 8.Bd3 0-0, etc...] **5...Nxg3 6.hxg3 b6 7.c3 Ba6? [D] (Next col.) [7...Bd6=] 8.Qa4+? [D] (Next col.) [8.Bxa6+- is the precise move to win. 8...Nxa6 9.Qa4+ Qd7 10.Qxa6; *Stockfish 9: 8.Bxa6 Nxa6 9.Qa4+ c6 10.Qxa6 g6 11.Qb7 Qc8, etc...] 8...Qd7 9.Qxd7+ Kxd7 10.Ne5+ [10.Ng5±] 10...Ke8= 11.Nd2 Bxf1 12.Rxf1 [12.Kxf1 (Text cont. next col.)**

Position after 7...Ba6? (From prev. col.)



Position after 8.Qa4+? (From prev. col.)

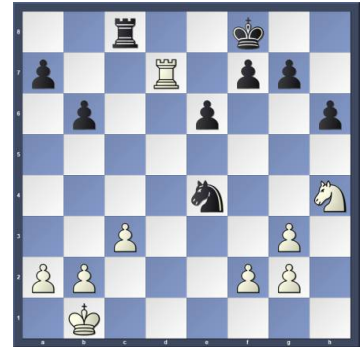


(Cont. from prev.col.) seems wilder. 12...Bd6 13.Nd3 Nd7 14.c4 h6 15.Rc1] **12...Nd7 13.Ndf3 Bd6 14.Nd3 Rc8 15.0-0-0** [*Stockfish 9: 15.Nd2 c5 16.dxc5 Nxc5 17.Nxc5 Bxc5, etc...] **15...c5 16.Rde1 Ke7 17.Rh1 [D]**

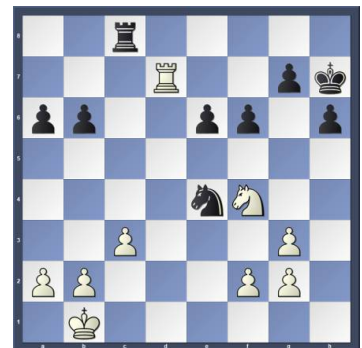


(Next col.) **17...h6 18.Kb1 Rc7 19.e4 dxe4 20.Rxe4 Nf6 21.Re2 Rhc8 22.Nh4 Kf8 [22...Rd7 keeps more tension. (Text cont. next col.)**

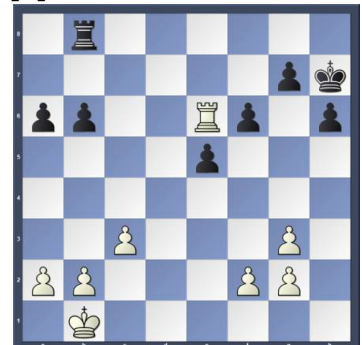
(Cont. from prev.col.) **23.Nf3 a6 24.Kc2 Rdd8 25.dxc5 Bxc5 26.Nfe5 Bd6] 23.dxc5 Bxc5 24.Nxc5 Rxc5 25.Rd1 Rd5 26.Red2 Rxd2 27.Rxd2 Ne4 28.Rd7 [D]**



28...a6 29.Nf3 f6 [29...Rc5] 30.Nh4= Kg8 31.Ng6 Kh7 32.Nf4! [D]



32...Nc5 33.Rd6 e5 [White has an edge.] 34.Ne6 Nxe6 35.Rxe6 Rb8 [D]



(Olin - Draw agreed at this point.)
*[Stockfish 9: 36.Rd6 a5 37.Kc2 Kg6 38.a4 Kf5 39.c4 h5, etc...] **½-½**

Copy and paste the link below into your browser:

<http://view.chessbase.com/cbreader/2018/7/7/Game511606171.html>

Round: 4

Submitted by Terance with his comments and selected Fritz/Stockfish* comments [shown thusly].

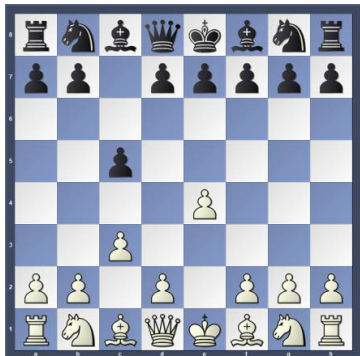
White: Justin Xu (1592)

Black: Terance Hall (1889)

Date: 7/13/2018

***(Please copy and paste the HTML link at the end of this article into your browser to read the complete Stockfish comments.)**

[B2: Sicilian: 2 c3] **1.e4 c5 2.c3 [D]**



(Terance: A closed Sicilian which I never played against before and was not booked up on. I just started playing the Sicilian.)

2...Nc6 (Terance: I wanted to hold e5 and put a little pressure on d4, but Nf6, or e6 was slightly better.) **3.Nf3 d5 [D]**



(Terance: This move made sense to me as it opens up the way for the White Square Bishop and I can take back with the Queen as White cannot play Nc3 and gain a tempo on my Queen because there is a pawn on c3.) **4.exd5 Qxd5 5.d4 Nf6 6.Be3 Bg4 7.Be2 e6 8.h3 cxd4 [D]**



(Text cont. next col.)

(Cont. from prev. col.) (Terance: Here I had three choices as I ruled out Bxf3 as it helps White control the center. Three choices: Bh5, Bf5, or cxd4. I choose the latter as my c-pawn was being threatened and seems to be the strongest as now White would go wrong if he took on g4. dxe3 and White's pawns are all messed up.) **9.Bxd4 Nxd4**

(Terance: Now I have the pair of Bishops.) **10.Qxd4** (Terance: Strongest.) **10...Bf5?! [D]**



(Terance: Taking the Knight was the main move I considered but that looks drawish. I decided on taking control of the light squares with my Bishop. With Bf5 White could play Qa4 with an advantage after castling as he gets control of the d-file with his rook. Engine says Qxd4 was best.)

[10...Qxd4 11.Nxd4 Bxe2 12.Kxe2=] **11.0-0 [11.Qa4+ Nd7 12.0-0 Rd8] 11...Bc5 [D]**



[Black threatens to win material: Bc5xd4] (Terance: Engines like Qxd4 but I wanted to finish my development as I was now resigned to put my King on e7 and once the Queens are off my King is in the center of the board.) [11...Qxd4 12.Nxd4 0-0-0 13.Nxf5 exf5 14.Bc4=] **12.Bb5+** (Terance: Better was Qa4+ as with Bb5+ aids in my plan. (Text cont. next col.)

(Cont. from prev.col.) In addition, the Bishop gets harassed here.) [12.Qa4+!? might be a viable alternative 12...Ke7 13.Rd1=] **12...Ke7 [D]**



(Terance: Now I was satisfied with my position.) **13.Qxd5 Nxd5 14.c4? [D]**



(Terance: This was played rather quickly and I felt it was not the correct move. Black now gets a huge advantage.)

[14.Re1!? is an interesting idea. *Stockfish: 14...Nf4 15.Nbd2 Bb6 16.Nb3 a6 17.Bc4 Rhd8, etc...] **14...Nb4** (Terance: The other two spots for the Knight Nb6! and Nf4 were better than Nb4, but Nb4 causes problems for white also.) [14...Nb6!? 15.Nc3 a6-+ *Stockfish: 16.Na4 Rac8 17.Nxb6 Bxb6 18.Ba4 Rxc4] **15.Nc3 Nd3 [D]**



(Terance: Rhd8 is good also here.) **16.b3 [16.Nh4!? Bg6 17.Rad1] 16...a6 [D]** (p.3) (Text cont. p.3) (Next col.)

(Position after 16...a6 (From p.2)



(Cont. from p.2) (Terance: I wasted no time on this move as it puts White's Bishop out of play and if I get rid of the Knight on c3 and play Rab8 then with b5 White's Bishop would be trapped.) **17.Ba4 Rhd8 18.g4?!** (Terance: a3 was much better.) [18.a3] **18...Bg6-+ 19.Rad1** [19.Ne2 Rab8 20.b4 Bxb4-+] **19...h6 [D]**



(Terance: I realize here that White is almost out of good moves, so in the style of Karpov I played h6 which takes away all threats to Black and I can take my time in this position. Black has a clearly winning position.) **20.Nh4** (Terance: Trying to find some counter play.) [20.Kg2 Bb4 21.Ne2 Be4-+] **20...Bh7 21.Kg2 [D]**



(Terance: Trying to get out of the pin and perhaps play f4.) [21.Nf3 Nf4-+] **21...Rab8 [D]** (Next col.) (Terance: Here White thought for a while and then resigned. Why? Well, White is just about out of moves, as the (Text cont. next col.)

(Position after 21...Rab8 (From prev. col.)



(Cont. from prev.col.) rooks cannot move with f2 and Bb4 being threatened, and if the c3 Knight moves, b5 traps the Bishop on a4. If f4 Bb4! and Black dominates more. The engines see Black's position a Rook up even though there is equal material on the board.) [*Stockfish: 21...Bb4 22.Nb1 Nf4+ 23.Kg3 g5 24.a3 Rd3+ 25.Nf3 Bd6, etc...] **0-1**

Copy and paste the link below into your browser:

<http://view.chessbase.com/cbreader/2018/8/24/Game164872539.0.html>

Round: 5

Submitted by Terance with his comments and selected Fritz/Stockfish* comments [shown thusly].

White: Terance Hall (1889)

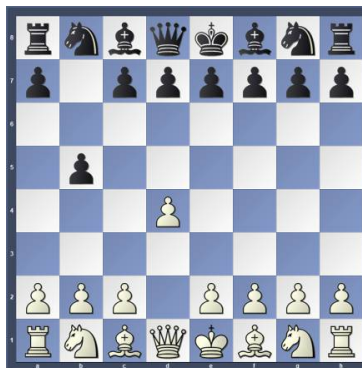
Black: Martin Rakaczewski

(Unr.)(Post Rating was 1856/6)

Date: 7/20/2018

***(Please copy and paste the HTML link at the end of this article into your browser to read the complete Stockfish comments.)**

[A40: Unusual replies to 1 d4] **1.d4 b5 [D]**



(Terance: Wow, I was not expecting b5 ((The Polish defense as Martin told me after the game)) which I never had (Text cont. next col.)

(Cont. from prev.col.) to face in a serious game. I sank into a little think on how to approach this. Best to me was stick to basics and try to control the center and develop.) **2.e4** (Terance: Take the center.)

2...Bb7 3.f3 [D]



(Terance: Decisions, what to play here? I thought about what they call the Spassky gambit with 3.Bxb5 Bxe4 or f5 ((see analysis)). I also thought about Nd2 which Stockfish likes the best. I decided on f3 so Black's Bishop would bite granite.) [Stockfish*: 3.Bxb5 Bxe4 4.Nf3 c6 5.Be2 e6, etc...]

(Terance: "solidifying the centre and aiming to prove the centre pawns are better than the wing pawns" -

Grandmaster Boris Avrukh's mainline

vs. the Polish Defense. 3...Nf6 (3...a6

4.Nf3) (Terance: Transposes to the

St. George defense.) [4.Nd2 e6

5.Ngf3 a6 6.0-0 c5?! 7.dxc5 Bxc5 8.e5

Nd5 9.Ne4 Be7 10.a4 b4 11.Nfd2!]

(Terance: "Heading for c4 and freeing

the Queen on the d1-h5 diagonal ...

and eventually += on move 18. The

main plan for White is to play with

pieces in the free space in the centre

and possibly aim to attack on the

Kingside or fill the holes left behind in

Black's pawn structure." [Stockfish*:

3.Bxb5 Bxe4 4.Nf3 c6 5.Bd3 Bxd3

6.Qxd3 d5, etc] **3...a6 4.Bf4**

(Terance: Better was c4.) [Stock-

fish*: 4.c4 e5 5.dxe5 Nc6 6.cxb5

Nxe5, etc...] **4...e6 5.a4 [D]** (p.4)

(Terance: Best according to the

Stockfish engine. This move poses a

threat of winning a pawn.) **5...b4**

(Terance: Best and is what I ex-

pected.) **6.Bd3** [Stockfish*: 6.c4 Nc6

7.Be3 Na5 8.c5 d6 9.cxd6 Bxd6, etc...]

6...Nf6 7.Ne2 c5 [D] (p.4) (Text

cont. p.4)

Position after 5.a4 (From p.3)



Position after 7...c5 (From p.3)



(Cont. from p.3) (Terance: The sharpest move to start to give me problems.) **8.c3** (Terance: I played this as I am trying to keep a pawn at d4 in case Black plays d5 and then I can play e5 shutting the Bishop out on b7.) **8...d5 [D]**



(Terance: Of course now Black has the advantage and initiative threatening c4 and b3 trapping my bishop.) **9.cxb4?** (Terance: I risked this bad move as I knew the practical move was Nd2 developing and giving my Bishop the flight square b1. I did not feel like enduring a long game with my pieces cramped up on the Queenside. So I was willing to gamble a pawn on e4 to open the position.) [9.Nd2 Be7]= **9...c4 [D]** (Next col.) (Terance: I was relieved not to see dxe4 which gains a pawn. However, the c4 move is not bad either.) [9...dxe4 10.fxe4 cxd4 11.0-0] **10.Bc2 Bxb4+** [10...dxe4 11.fxe4 Bxb4+ 12.Bd2] **11.Bd2!?= [D]** (Next col.) (Text cont. next col.)

(Position after 9...c4 (From prev. col.)



(Position after 11.Bd2!?= (From prev. col.)



(Cont. from prev. col.) (Terance: The only move that tactically equals the game as it saves me from losing a pawn because Black's Bishop is being threatened so black has to react to this and has no time to take on e4. If Black plays Bxd2 then I play Nxd2 protecting the e4 pawn again.) **11...a5 12.e5 [D]**



(Terance: Now I can execute my plan closing the center and making Black's White squared Bishop bad with e5.) **12...Nh5?** (Terance: with a seemingly natural move Black makes the wrong choice as he had to play his Knight back to d7 or g8.) [12...Nfd7]?= has some apparent merit] **13.0-0 [D]** (Next col.) (Text cont. next col.)

Position after 13.0-0 (From prev. col.)



(Cont. from prev. col.) (Terance: With this move the game changes over to White having the advantage with the threat g4 trapping the Knight.) **13...g6?!** (Terance: Black tries to save the Knight but can't with accurate play, so Martin tries his best to see if I am up to finding the best moves. What would you play as Black?) [Stockfish*: 13...0-0 14.g4 f6 15.gxh5 fxh5 16.dxe5 Nc6 17.h6 g6, etc...] **14.Bh6! [D]**



[White traps the enemy king in the center.] (Terance: The only move that keeps a pawn advantage. I played Bh6 rather quickly as I had calculated if Black plays g6 that my response would be Bh6 the move before. It is important that you calculate on your opponent's time all your responses and counter moves. For example, I had already calculated if White plays Qh4? that I can play Qc1 holding the Bishop and can play Bg5 trapping the Queen most likely, so I knew that Qh4 was a bad response. I then looked for better moves for Black and only found Bf8, Rg8, and f6, and knew with any of these I had a good advantage and figured that Bf8 was best and figured that I can reply with Qc1 or Qd2 holding the Bishop.) **14...Qh4? [D]** (p.5) (Terance: Black wrongly plays what seems like the most promising move.) [14...Bf8 15.Qc1] **15.Qc1** (Terance: (Text cont. p.5)

Position after 14...Qh4? (From p.4)



(Cont. from p.4) Chess engines liked f4 here also.) [Stockfish*: 15.f4 Be7 16.Nec3 f6 17.exf6 Qxf6 18.Nb5 Nc6 19.N1c3 Ng7, etc...] **15...Nc6** (Terance: Martin thinks and finds the best move! I kept thinking, "This unrated player, Martin, is definitely playing great chess like a Class A player and above.") **16.Bg5 [D]**



(Terance: I played this rather quickly and thought I was fine.) **16...Nxd4 [D]**



[Black has a mate threat.] (Terance: I saw this move right after I played Bg5 and realized that Black is threatening Nxe2 forking my King and Queen after just winning my d4 pawn. I was kicking myself for allowing Black this counter play as once the Black Knight leaves the d4 square the Black Queen can escape there and at the same time the e2 square (Knight) is hanging. I thought awhile on this and cleared my head and realized that I can play Nbc3! (Text cont. next col.)

(Cont. from prev. col.) If Black plays Nxe2 I can play Nxe2 covering the d4 square and the Queen is still trapped. If Black decides to play Bxc3 I can take back with Nxc3 which guards the e2 square and leaves the Black Knight on d4 and the Black Queen has no escape square. So my last move Bg5 was correct!) **17.Nbc3!?** (Terance: Strongest as Nec3 leads to equality after Qxg5! as Black can also take the Bishop on c2.) **17...Nxe2+?** (Terance: Black is losing material but Nxe2 loses more. It was here I knew I was clearly winning, but I had to show good technique as one missed step can ruin it for me.)

[17...Qxg5! 18.Qxg5 Nxc2±] **18.Nxe2+ Bc5+?! [D]**



[18...Nf4 19.Bxf4 Qd8+-] **19.Kh1** (Terance: This is all forced in my favor.) **19...Ng3+ 20.Nxg3 Qd4 21.Bf6 [D]**



(Terance: Here I had to calculate Black's best moves and to counter them. Bf6 is a very strong move as it protects the e5 pawn, doesn't allow Black to castle Queenside. If he castles Kingside he is mated with Qh6 then Qg7 mate, and threatens the Rook on h8..) **21...Rg8** [21...Rf8 doesn't change the outcome of the game 22.b3 cxb3 23.Rd1+-]

22.Qh6 [D] (Next col.) (Terance: Here is the strongest move as Black does not have time to play Qxb2 as Qxh7 threatens the Rook and White can play Rab1 with a crushing position.) (Text cont. next col.)

(Position after 22.Qh6 (From prev. col.)



(Cont. from prev. col.) **22...Kd7** [22...Rf8 doesn't change anything anymore 23.Qxh7 Be7 24.Bxe7 Kxe7 25.f4+-] **23.Qxh7** [Stockfish*: 23.Rad1 Qxb2 24.Qxh7 Rgf8 25.Bxg6 Qb6 26.Bxf7 Kc8 27.Rb1 Qc7, etc...] **23...Be7** [23...Raf8 the last chance for counterplay



24.Ne4!



Better than holding on to the material.] [Stockfish*: 24.Rad1 Qf4 25.Ne4 Kc6 26.Nxc5 Kxc5 27.Be7+ Kb6 28.Bxf8 Rxf8, etc...] **24.Qxf7** (Terance: Now Black loses a piece by force.) **24...Rae8 [D]**



(Text cont. p.6)

(Cont. from p.5) **25.Bxe7 Rxe7 [D]**



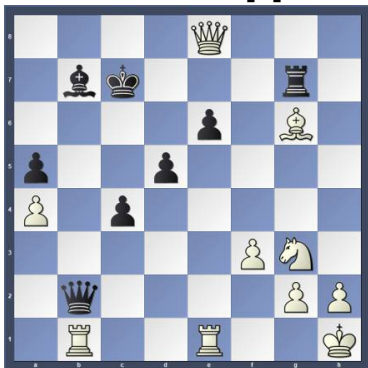
26.Qxg8 Qxe5 27.Bxg6 (Terance: Yes, I felt that Rfe1 was stronger, but I played Bxg3 which allowed me to get at his King quicker and seem more straightforward.) [Better is 27.Rfe1 seems even better 27...Qd4 28.Ne4 Qb6 29.Nf6+ Kc7+--] **27...Rg7 [D]**



[27...Qg7 there is nothing else anyway 28.Qb8 Qxg6 29.Qxb7+ Ke8 30.Qa8+ Kf7+--] **28.Qe8+** [Better is 28.Qh8 keeps an even firmer grip 28...Qf6 29.Be8+ Ke7+--] **28...Kc7 29.Rfe1 [D]**

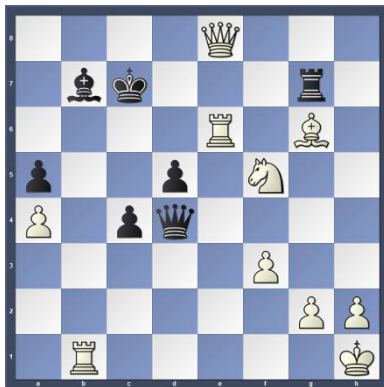


29...Qxb2 30.Rab1 [D]



(Text cont. next col.)

(Cont. from prev. col.) (Terance: Here I am thinking of sacking my Rook with Rxb7 for mate threats after I remove the e6 pawn.) **30...Qc3 31.Rxe6 Qd4 32.Nf5 [D]**



(Terance: Here I can play Re7 and go for the mate, but why? When I can play Nf5 which is a resigning move which Black did do. Nice game!) [32.Nf5 Qd1+ 33.Rxd1 Rd7 34.Rb1 Rd8 35.Qb5 Rc8 36.Qxb7+ Kd8 37.Re8#; 32.Re7+ Rxe7 33.Qxe7+ Kc8 34.Bf5+ Kb8 35.Qxb7#; 32.Rxb7+ Kxb7 33.Qb5+ Ka8 34.Re8+ Ka7 35.Qb8+ Ka6 36.Re6+ Qb6 37.Rxb6#]

1-0

Copy and paste the link below into your browser:

<http://view.chessbase.com/cbreader/2018/8/28/Game108939765.html>

Games from the NPCC 2018 July-August Quads Tournament:

Round: 2

Submitted by Olin with my, Terance Hall (as edited) and selected Fritz/Stockfish* comments [shown thusly].

White: Ira Siegel (1427)

Black: Olin Mastin (1503)

Date: 8/4/2018

***(Please copy and paste the HTML link at the end of this article into your browser to read the complete Stockfish comments.)**

[A45: Trompowsky Attack] **1.d4 Nf6 2.Bf4 g6 3.Nd2 Bg7 4.e3 [D]**

(Next col.) (Terance: With the Knight on d2 I would take the center with e4 here and c3 after that.)

4...d6 5.Bc4?! (Terance: This move gives Black the initiative. The Bishop is slightly misplaced on this square as it can be attacked. A better (Text cont. next col.)

(Position after 4.e3) (From prev. col.)



(Cont. from prev. col.) setup, in my opinion, would be Nf3, c3 or c4, and Bd3 with plans of Qc2 and h4!)

5...0-0 6.h3 b6 (Terance: Better was c5.) **7.Ngf3= Bb7 8.0-0 Nbd7**

9.Re1 Re8 10.c3 e5 11.Bg3

(Terance: Better was dxe5.)

[*Stockfish: 11.dxe5 dxe5 12.Bh2 e4 13.Nd4 a6 14.a4 Nc5 15.Qc2 Nfd7, etc...]

11...e4 [D]



[Black threatens to win material:

e4xf3] (Terance: Now Black gets the e4 square where White should have had the e4 square in the beginning.)

12.Ng5? [12.Nh4!? must definitely be considered; *Stockfish: 12.Nh2 Nh5 13.Qb3 Qe7 14.Bf4 Nxf4, etc...]

12...d5 [D]

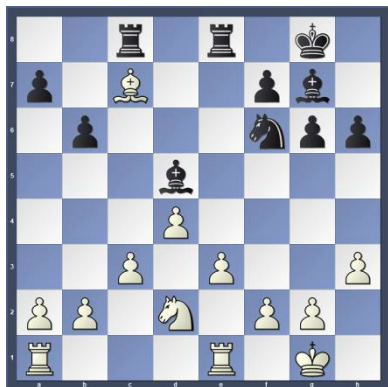


(Terance: This move gives black a huge, if not winning, advantage. This shows how the Bishop was misplaced on this square.) **13.Qb3??** (Text

(Cont. from p.6) [The final mistake, not that it matters anymore.] [13.Be2 h6 14.Nxf7 Kxf7] **13...h6** [13...dxc4!? makes it even easier for Black 14.Qxc4 Bd5 15.Qxc7 Qxc7 16.Bxc7-+] **14.Ngxe4??** [D]

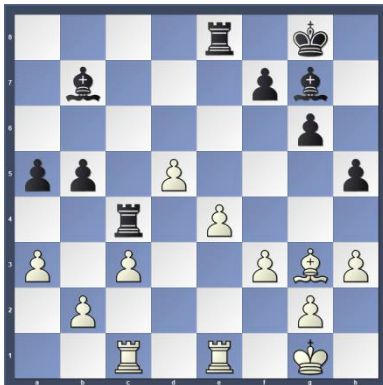


[The position was bad, and this mistake simply hastens the end.] [14.Nxf7 Kxf7 15.Be2 Qe7] **14...dxc4** [14...Nxe4 and the result of the game is clear: Black will win 15.Bxd5 Bxd5 16.Qxd5 Nxd2-+] **15.Nxf6+ Nxf6 16.Qxc4 Bd5?!** (Terance: c5 or Rc8 are the logical moves here.) [16...Rc8!?-+] **17.Qxc7 Qxc7 18.Bxc7** [Black wins a piece] **18...Rac8** [D]

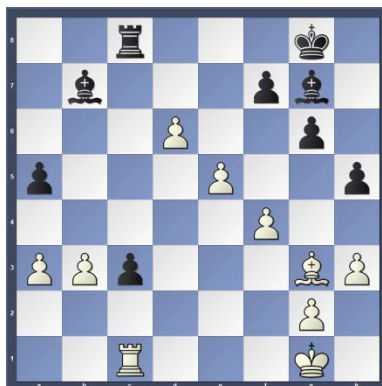


19.Bg3 (Terance: Better is Be5.) [*Stockfish: 19.Be5 Ne4 20.Bxg7 Kxg7 21.Nxe4 Rxe4, etc...] **19...Ne4 20.Nxe4 Bxe4 21.f3 Bb7 22.e4 h5?!** (Terance: Best was f5 to open up lines, but not an easy move for a human to make. If f5, e5 would allow Black to play Bd5 blockading the white squares.) [*Stockfish: 22...f5 23.exf5 gxf5 24.Kf2 Bd5 25.Be5 Bxe5, etc...] **23.d5** [White wins space] **23...b5 24.Rac1 a5 25.a3** (Terance: Hard for me to judge this position but the Stockfish engine likes Bf2.) **25...Rc4** [D] (Next col.) [Black prepares the advance b4.] **26.d6** [Black has to watch this pawn.] **26...Rd8?!** (Terance: Better was Bc8 to block the pawn on d7 and not tie down the Rook. Black still has an advantage.) **27.e5** [White has a new protected passed pawn: d6.] **27...b4??** (Text cont. next col.)

(Position after 25...Rc4) (From prev. col.)

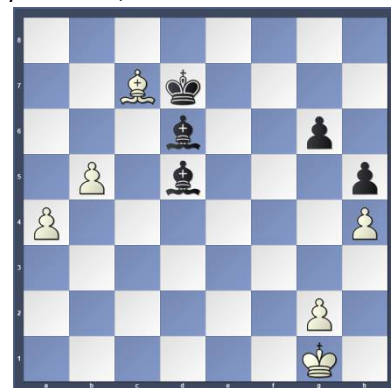


(Cont. from prev. col.) [Weakening the position] (Terance: This hands over a big, if not winning advantage, to White. Best was a4.) [27...Kf8=; *Stockfish: 27...a4 28.Rcd1 Bc8 29.Bf2 Bd7 30.Bd4 Re8, etc...] **28.b3??** [Throws away a nice position] (Terance: cxb4! should win for White as the d-Pawn is far advanced.) [28.cxb4, White has a promising position 28...Rxc1 29.Rxc1 axb4 30.Rc7+- *Stockfish: 30...Ba6 31.a4 Bh6 32.f4 f6 33.Bh4 g5, etc...] **28...Rxc3-+ 29.Rxc3 bxc3 30.Rc1 Rc8 31.f4** [D]

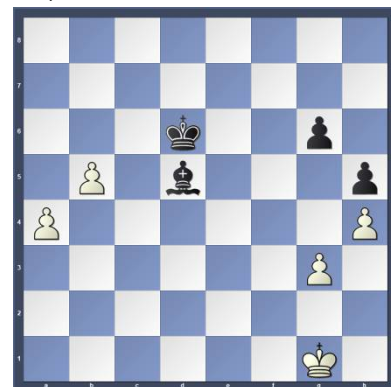


[31.Bh4 Bc6 32.Rxc3 Bxe5 33.Rxc6 Rxc6-+] **31...Kf8 32.Be1 Ke8?!** [32...Bh6 and Black can look forward to a comfortable game 33.g3 h4-+] **33.Rxc3 Rxc3 34.Bxc3 Kd7** [34...Bd5 35.Bxa5 Bxb3 36.Bc3] **35.Bxa5** [35.e6+!? must be considered 35...Kxd6 36.Bxg7 Kxe6 37.Be5=] **35...f6 36.h4??** [36.Bc3 and White could well hope to play on 36...fxe5 37.fxe5] **36...fxe5-+ 37.fxe5?** [37.Bc3 Kxd6 38.a4-+] **37...Bxe5 38.Bc7** [38.Bd2-+ desperation.] **38...Bb2 39.a4 Bd5 40.b4 Ba3 41.b5 Bxd6** [D] (Next col.) [41...Bc5+ and Black can already relax 42.Kf1 Bxd6-+] **42.Bxd6** [42.Bb6-+ there is nothing better in the position.] **42...Kxd6 43.g3** [D] (Next col.) (Text cont. next col.)

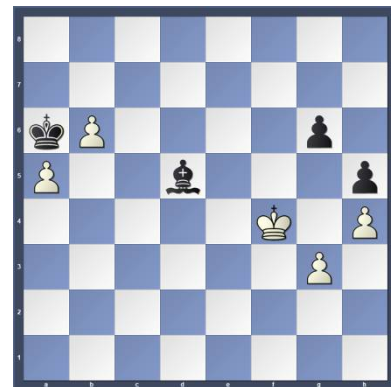
(Position after 41...Bxd6) (From prev. col.)



(Position after 43.g3) (From prev. col.)

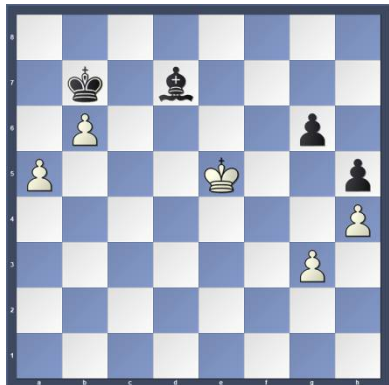


(Cont. from prev. col.) (Olin: Terance thought that I should have played 43...Kc5 here in post game analysis.) **43...Kc7** (Terance: Yes, according to the chess Stockfish engine, Kc5 is a mate in 33 moves. The move played, Kc7, a mate in 38 moves. LOL!) **44.a5** [*Stockfish: 44.a5 Kd6 45.Kf2 Kc5 46.a6 Kxb5 47.a7 Ka6, etc...] **44...Kb7 45.Kf2 Bc4 46.b6 Bd5 47.Ke3 Ka6 48.Kf4** [D]



(Olin: Note, this position may not be correct, because my score sheet was a little messed up and I had to guess what really was played. Perhaps Ira has the correct moves on his score sheet!?) **48...Be6?!** (Terance: Kxa5! wins, but with Be6 it is a draw now.) [48...Kxa5 and Black has triumphed 49.b7 Bxb7-+; (Text cont. p.8)

(Cont. from p.7) *Stockfish: 48...Kxa5 49.Ke5 Bh1 50.Kf6 Kxb6 51.Kxg6 Bf3, etc...] 49.Kg5= Bf5 50.Kf4 Kb7 51.Ke5 Bd7 [D]



(Olin: Again, this may not be the correct final position!) ½-½

Copy and paste the link below into your browser:

<http://view.chessbase.com/cbreader/2018/8/9/Game378712421.html>

Round: 3

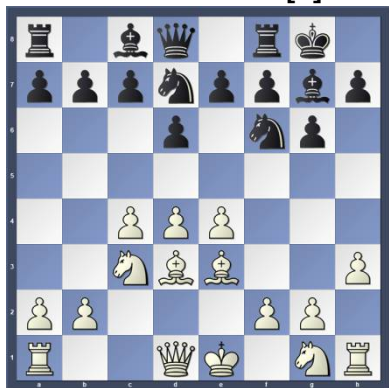
Submitted by Olin with selected Fritz comments [shown thusly].

White: Will Moyer (1497)

Black: Olin Mastin (1503)

Date: 8/10/2018

[E71: King's Indian: 4 e4 d6 5 h3] 1.c4 Nf6 2.Nc3 g6 3.d4 d6 4.e4 Bg7 5.h3 0-0 6.Bd3 Nbd7 7.Be3 [D]



7...Re8 8.Nf3 e5 9.d5 [This push gains space] 9...a6 10.Qd2 b6 11.Bg5 Nc5 12.Bc2 Bd7 [Black has a cramped position] 13.b4 Nb7 [D]



(Text cont. next col.)

(Cont. from prev. col.) 14.a4 [White prepares the advance b5] 14...Qc8 15.Ke2 a5 16.b5 [White wins space] 16...Nc5 [A sound move] 17.Bh6 [Black has a cramped position] 17...Nh5 18.Bxg7 Nf4+ [D]



19.Kf1 Kxg7 20.Ne2 Nxf3?? [D]



[Hands over the advantage to the opponent][Better is 20...Nxe2 is a viable option 21.Qxe2 f5] 21.gxh3± Bxh3+ 22.Ke1 Bg2?? [D]



[Causes further problems for White] [Better is 22...Rh8 23.Nh4 f6±] 23.Qh6+- Kf6 24.Qg5+ [Better is 24.Qh4+ keeps an even firmer grip 24...Kg7 25.Qxh7+ Kf6] 24...Kg7 25.Qxg2 f6 26.Kd2 [Better is 26.Nh4 makes it even easier for White 26...Rh8 27.Ra3 Nd7+-] 26...Rh8 27.Rag1 h5 [27...Qg8+- what else?] 28.Qxg6+ Kf8 (Text cont. next col.)

(Cont. from prev. col.) 29.Qxf6+ [29.Qg7+ Ke8 30.Qxh8+ Kd7 31.Rg7#] 29...Ke8 30.Qxh8+ Ke7 31.Rg7+ [D]



0-1

Copy and paste the link below into your browser:

<http://view.chessbase.com/cbreader/2018/8/11/Game501694203.html>

Other places to play chess:

The below are for friendly off hand non-rated games (clocks optional). Bring chess set.

Monday evenings:

About 6:00 to 9:00 PM, "Starbucks," 10 North Main Street, and / or "Nonno's Italian Coffee Parlor," 6 E. State St., Doylestown

Tuesday mornings :

9:30 AM to Noon at the Pennridge Community Senior Center in Silverdale. Located on route 113 near route 152

Wednesday evenings :

7:30 to 10:00 PM, "Christ Reformed Church at Indian Creek" located at 171 Church Road (intersection with Cowpath Road), Telford. (Temporarily closed until Fall)

Weekdays:

8:00 to 4:00 Daily, Senior Center, 312 Alumni Ave, Harleysville.

Friday Mornings:

10:00 AM up to 2:00 PM Indian Valley Public Library, 100 E. Church Ave, Telford.

Allentown Center City Chess Club

Offer (from Eric C. Johnson): "For any of our events -- If three or more Lansdale players carpool together -- the designated driver plays for free!"

<http://www.freewebs.com/allentowncentercitychessclub>

This concludes this issue. More games in next issue.