

~ En Passant ~

Newsletter of the North Penn Chess Club, Lansdale, PA – Summer 2018, Part 1

E. Olin Mastin, Editor

North Penn Chess Club

500 West Main Street

Lansdale, PA 19446

www.northpennchessclub.org

(215) 699-8418 donfunk@msn.com

This issue features games played in April thru May by NPCC players.

The purpose of these newsletters is to include as many games as possible by NPCC players irregardless of the strength of the participants.

Thanks to all for submitting games!

Game from the NPCC 2018 April Quads Tournament:

Round: 3

Submitted by Terance with his comments (as edited) and selected Fritz/Stockfish comments [shown thusly].

White: Terance Hall (1871)

Black: Edmund Kline (1960)

Date: 4/20/2018

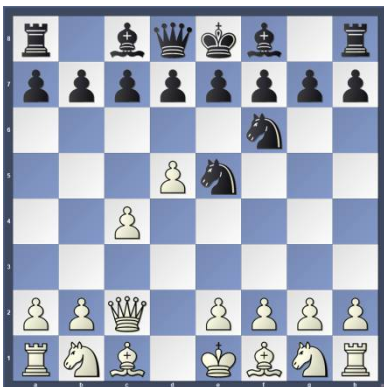
***(Please copy and paste the HTML link at the end of this article into your browser to read the complete Stockfish comments.)**

[A50: Queen's Fianchetto Defence (1 d4 Nf6 2 c4 b6)] **1.d4 Nf6 2.c4 Nc6**

(Terance - I was not expecting this.) **3.d5**

(Terance - Better was to develop with Nc3 but I wanted to try something different.)

3...Ne5 4.Qc2 [D]



(Terance - Better was Nc3 or e4 which is possible as black can't take it due to losing a piece (see analysis. I played Qc2 to support e4 just in case Black plays e6 and Bb4.) **4...e6 5.e4** (Terance - Here my initial move was to play dxe6 and let Black play dxe6 and his white square Bishop is slightly cramped. I chose e4 to grab space in the center.) [*Stockfish 9: 5.dxe6 dxe6 6.Nf3 Bd6 7.Nxe5 Bxe5, etc...] (Text cont. next col.)

(Cont. from prev.col.) **5...Bc5**

(Terance - Now I realized that I am behind in development and Black has three active pieces with threats.)

6.Bg5 (Terance - Should have played Nf3 or Nc6 but I was afraid of Ng4 and pressure on my f2 pawn. I figured if Black plays Ng4 now I can play Nh3 holding the f2 pawn. I played Bg5 to not only pin the Knight but if Black plays h6 weakening the Kingside I can play Bh4 and hold the f2 pawn also.) **6...h6 7.Bh4**

(Terance - Now f2 is not an issue.)

7...d6 8.Nc3 (Terance - Taking stock now White's opening was not a success and Black has excellent play. I spent time on my clock in the opening. I have to untangle myself and figure out a plan.) **8...Ng6** (Terance - The move I expected, a nice solid move.)

9.Bg3 e5 (Terance - Why not play this? I was hoping Ed would not play this to have a more interesting game.) **10.Bd3** (Terance - I played this as in these kind of positions f4 and e5 is prepared so the g-Knight will go to e2.) **10...Nh5 11.Nge2 [D]**



(Terance - 0-0-0 or Na4 seems much better according to Stockfish 9. Playing Nge2 gives Black a nice advantage.) [*Stockfish 9: 11.0-0-0 0-0 12.Kb1 Nhf4 13.Bf1 f5, etc...]

11...Bd7 12.0-0-0 (Terance - This seems best with my plans to prepare a Kingside attack. Other than castling Queenside, Stockfish suggests Na4 as the top move.) **12...0-0 13.Kb1 a6** [Prevents intrusion on b5] **14.Rdf1?!** (Terance - Here I was kicking myself as I placed the wrong rook on f1, (Text cont. next col.)

(Cont. from prev.col.) it should be Rhf1 so that the other rook can go to e1 and support the e-pawn push.)

14...Qf6 15.f4 (Terance - I felt this had to be played now tactically for my plan.) **15...exf4 16.Bxf4 Nxf4 17.Nxf4 [D]**



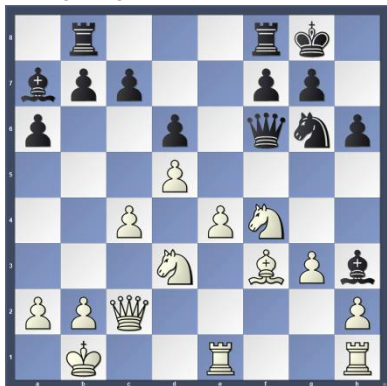
(Terance - Only move not to lose any material or advantage.] **17...Qe5** (Terance - Yes, Ed found the strongest move but there was not much choice for the Queen.) **18.g3** [Controls f4+h4] (Terance - Here I spent too much time trying to figure out if I should trade down to an ending or not. I did not see any advantage going into an ending with Nxc6 and to avoid this required some sort of plan to free my pieces namely my Bishop on d3. Playing g3 kept my options opened.) [*Stockfish 9: 18.Nxc6 fxc6 19.h3 Rxf1+ 20.Rxf1 Rf8, etc...]

18...Rab8 19.Be2?! (Terance - Here I was trying to divert Black from his Queenside attack and free my Bishop but Nce2 was better.) [19.Nce2 c6] **19...Bd4** (Terance - I didn't expect this move as I was looking at Be3 and forcing Nxc6.)

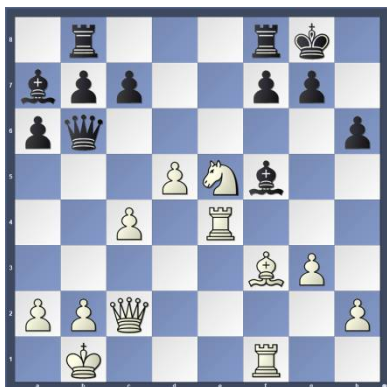
20.Nd3? (Terance - Better was Bd3 back in the hole. Nd3 moves the Queen away but leaves the Knight on a less effective square than f4. Black now has a nice advantage. By now my clack time was getting to a critical point.) [20.Bd3 c5] **20...Qe7**

21.Bf3? (Terance - Played to counter Bh3. Engines suggest Qd2.) [*Stockfish 9: 21.Qd2 Ne5 22.Nxe5 Bxe5, etc...] (Text cont. p.2)

(Cont. from p.1) 21...Bh3 22.Re1 Qf6 23.Ne2? (Terance - This move simply drops a pawn with Bxb2 and if Qxb2 then Qxf3.) [23.Nf4] 23...Ba7?! (Terance - With this move Black loses almost all of his advantage.) [Better is 23...Bxb2!? 24.Bh5 Bd4 25.Bxg6 f6-+] 24.Nef4 [D]

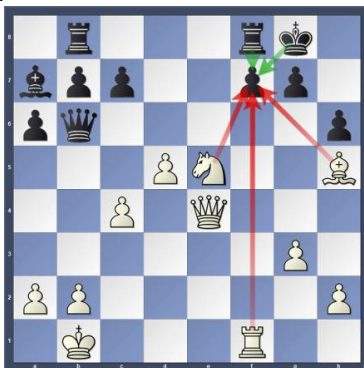


(Terance - A key move and break for White to continue his plan.) 24...Bd7 25.Rhf1 Ne5 26.Nxe5 Qxe5 27.Nd3 Qd4 [Better is 27...Qg5] 28.e5? (Terance - Here I saw that Bg2 was equal but missed Bf5! when I played e5 as I saw Re4 with an advantage hitting the queen. I was in time trouble here and played quickly.) [28.Bg2 f6=] 28...dxe5?? [Letting the wind out of his own sails] [28...Bf5 29.Rd1 b5-+] 29.Re4 (Terance: Now White has the initiative and slight advantage.) 29...Qb6 30.Nxe5 (Terance - Here in severe time pressure I played the wrong move order as I should play c5 and if Qg3 then Nxe5. Now with this mistake it is an equal game.) [*Stockfish 9: 30.c5!? Qa5 31.Bd1 Be8 32.b4 Qb5, etc...] 30...Bf5 = [D]

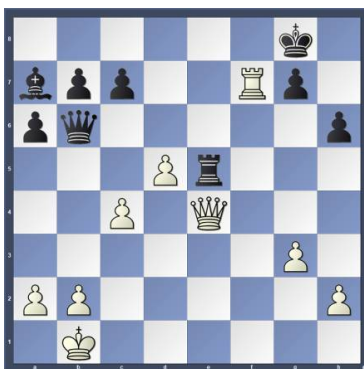


31.Bh5 [*Stockfish 9: 31.Bg2 g6 32.Rxf5 gxf5, etc...] 31...Bxe4 32.Qxe4 [D] (Next col.) [f7 becomes the focus of attention. Black wins the exchange] (Text cont. next col.) 32...Rbe8 33.Bxf7+?? [Gives the opponent counterplay] (Terance: About to lose on Time I played this move instead of Qf4 with a draw.) [Better is 33.Qf4 this is the best way to fight back 33...Rxe5 34.Qxe5=] 33...Rxf7!-+ [Deflection: e5] (Text cont. next col.)

Position after 32.Qxe4 (From prev. col.)



(Cont. from prev. col.) 34.Rxf7 [34.Nxf7 Rxe4 Deflection Pinning; 34.Rxf7 Qg1+ Double attack; ...34.--Rxf1+ Mate threat] 34...Rxe5 [D]



(Terance - After this move I flagged and lost on time.) [34...Rxe5 35.Rxg7+ Kxg7 36.Qxe5+ Qf6 37.Qxc7+ Kg6] [*Stockfish 9 64 BMI2: 34...Qg1+! 35.Kc2 Qxh2+ 36.Kc1 Qxg3, etc...] 0-1

Copy and paste the link below into your browser:

<http://view.chessbase.com/cbreader/2018/5/28/Game3849468.html>

Games from the NPCC 2018 April/May G100 Swiss Tournament:

Round: 1

Submitted by Terance with his comments (as edited) and selected Fritz/Stockfish comments [shown thusly].

White: Knox Bickford (1399)

Black: Terance Hall (1889)

Date: 4/27/2018

***(Please copy and paste the HTML link at the end of this article into your browser to read the complete Stockfish comments.)**

[D02:1 d4 d5 2 Nf3 sidelines, including 2...Nf6 3 g3 and 2...Nf6 3 Bf4] (Text cont. next col.)

(Cont. from prev.col.) 1.d4 Nf6 2.Bf4 d5 [D]



(Terance - Here I was trying to remember the most testing line against Bf4. I decided to play just solid moves.) 3.e3 c5 4.c3 Nc6 5.Nd2 e6 6.Ng3 Bd6 [D]



(Terance - Wanted to trade off his strong Bishop while developing.) 7.Ne5 (Terance - I most expected dxc5 but with Ne5, White occupies the e5 square.) 7...0-0 8.Bd3 cxd4 [D]



[Stockfish 9: 8...Qc7 9.Ndf3 h6 10.0-0 Nh5 11.Bc2 Nxf4, etc...] 9.exd4 Qc7

10.Ndf3 (Terance - Black is putting pressure on e5 so White counters this, but also building up a Kingside presence and tactic pressure on Black's h7 pawn.)

10...Ne4 [D] (p.3) (Terance - Ng4 and b6 were also possible. I chose Ne4 to force a trade of the d3 Bishop, as White is building up a dangerous initiative on my Kingside. I also played Ne4 to prepare f6 to kick the (Text cont. p.3)

Position after 10...Ne4 (From p.2)



(Cont. from p.2) e5 Knight out with tactics on the hanging f4 Bishop.)

11.Bg3 (Terance - White finds the best move!) **11...g6** (Terance - Even though this weakens my dark squares around my King002C I figured I could put my King on g7 to protect them once I take the dark square Bishop on g3 off the board. I needed to stop any threat on the h7 pawn after I take with Nxg3 hxg3 and the Bishop on d3 is blocked. Ne7 is also possible here.) **12.Qc2?** [D]



(Terance - This is a mistake as White should have played Ng4 with an even game.) [Better is 12.Ng4!? is an interesting idea 12...e5] (*Stockfish 9: 12...Kg7 13.Qc1 f6 14.Qh6+ Kg8, etc...) **12...Nxg3** (Terance - Now I can diffuse White's attacking chances and gain a pawn.) **13.hxg3 Nxe5** [D]



(Terance - The best way to capture, as this forces White to capture back with a minor (Text cont. next col.)

(Cont. from prev.col.) piece in this combination.) **14.dxe5 Bxe5** [D]



(Terance - At this point I already calculated if White played Ng5 I can play h5 or h6 and give up the pawn. I have a check on e5 once the Bishop goes to g7. I was also checking if I can make Bxg3 work after Ng5, but it does not work.) **15.Nxe5** [15.Ng5? Stockfish 9: 15...h6 (15...h5 16.0-0-0 Bf6, etc...)] **15...Qxe5+** **16.Qe2** [*Stockfish 9: 16.Be2 Bd7 17.g4 Rad8 18.0-0-0 Qg5+, etc...)] **16...Qg5** [D]

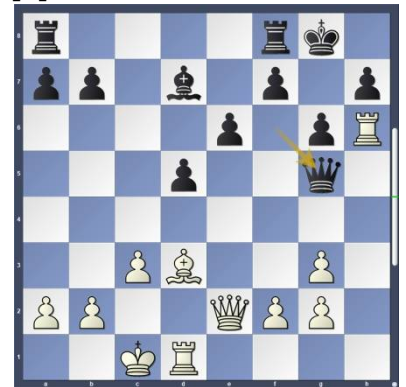


(Terance - Only move I saw to prevent White from castling Queenside. Here I felt that White was better positionally as he has an open h-file to my King, an active Bishop compared to my undeveloped Bishop. My only pluses though are my more active Queen and extra pawn.) **17.Qd2** [Stockfish 9: 17.Rd1 Bd7 18.0-0 Bc6 19.Bc2 Rfe8, etc...)] **17...Qe5+** (Terance - I repeated this move to see if White would play something different but objectively trading down was the most correct line. The reason why I did not trade down was that I was hoping for something more as if I trade down White's King is centralized while my King is not.) **18.Qe2** [Twofold repetition] (Terance - I Thought Be2 was a slightly better move.) **18...Qf6** [D] (Next col.) (Terance - A slightly inferior move (Text cont. next col.)

Position after 18...Qf6 (From prev.col.)



(Cont. from prev.col.) I played on purpose resigning myself that White can castle Queenside and I would have to defend my Kingside. I rather have my Queen help in the defense to keep my options open knowing my dark squares around my King are weak.) [18...Qxe2+ 19.Bxe2 Bd7 20.Kd2] **19.0-0 Bd7** (Terance - Had to develop my Bishop and connect my Rooks.) [*Stockfish 9: 19...e5 20.Rhe1 Bd7 21.Bc2 Bc6 22.Bb3 Rad8, etc...)] **20.Rh6?!** (Terance - Better was to take the diagonal (c1-h6) with Qd2 or Qe3. With this move I can execute my plan where White puts pressure on my h7 pawn with both Rooks. I can defend with only one of my Rooks, then my other Rook is free to attack.) [20.Qe3 Bc6] **20...Qg5+** [D]

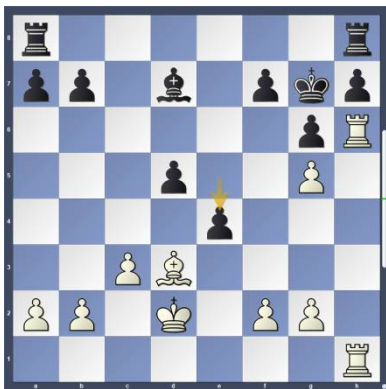


21.Qd2 Qxd2+ **22.Kxd2 Kg7** (Terance - I preferred this defense as to f5 and putting a Rook on the 7th rank for defense.) **23.Rdh1 Rh8** [D] (p.4) (Terance - Now what I predicted happened. So now White has to waste time to get his Rooks back in the game as he can't move his h1 Rook as I can take the h6 Rook. For White to free his Rooks he would have to retreat his h6 (Text cont. p.4)

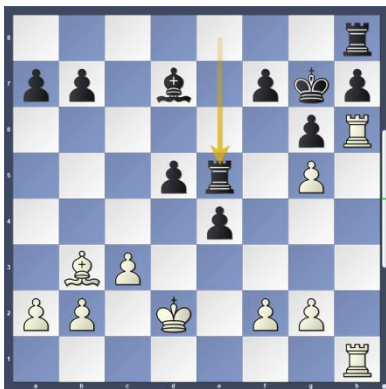
Position after 23...Rh8 (From p.3)



(Cont. from p.3) Rook first. Notice also that I have a free Rook. The Rook on a8 is free to move about now.) **4.g4 e5** [*Stockfish 9: 24...f6 25.f3 e5 26.Ke3 Rae8, etc...] **25.g5** [Black has a new backward pawn: h7] **25...e4 [D]**

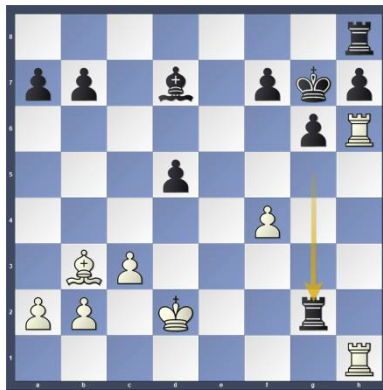


[*Stockfish 9: 25...Bc6 26.f3 Rae8 27.R6h4 a6, ...] **26.Bc2 Rae8 27.Bb3?** [Better is 27.f3!? and White is still in the game] **27...Re5+ [D]**



(Terance - The point of my e5 move on move 25, now Black will collect a second pawn.) **28.f4 exf3 29.gxf3 Rxc3 30.f4?** [30.R1h2+>] **30...Rg2+ [D]** (Next col.) (Terance - At this point it is a matter of technique. Black will push his h-pawn down the board.) **31.Kc1 Be6** [Better is 31...d4+ keeps an even firmer grip Stockfish 9: 32.R6h2 Rxc2 33.Rxc2 dxc3, etc...] **32.R6h3?? [D]** (Next col.) [32.R6h2 Rxc2 33.Rxc2+>] **32...Bxh3 33.Rxc3 Re8 [D]** (Next col.) (Text cont. next col.)

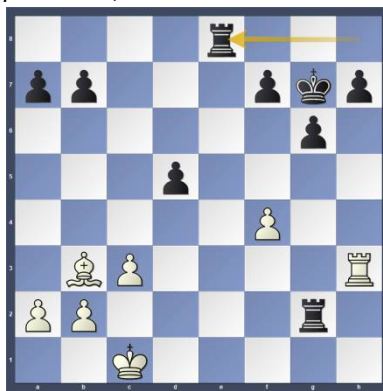
(Position after 30...Rg2+ (From prev. col.)



(Position after 32.R6h3?? (From prev. col.)



(Position after 33...Re8 (From prev. col.)



(Cont. from prev. col.) **[33...Re8 34.Bd1 Re1+>] 0-1**

Copy and paste the link below into your browser: <http://view.chessbase.com/cbreader/2018/4/30/Game259584593.html>

Round: 2

Submitted by Olin with selected Fritz/Stockfish* comments [shown thusly].

White: Olin Mastin (1511)
Black: George Murphy (1421)
Date: 5/11/2018

(Text cont. next col.)

(Cont. from prev. col.)

***(Please copy and paste the HTML link at the end of this article into your browser to read the complete Stockfish comments.)**

[D04: Colle System] **1.Nf3 d5 2.e3 Nf6 3.b3 g6 4.Bb2 Bg7 5.d4 0-0 6.Bd3 [D]**



[Better is 6.c4] **6...Bg4 7.Nbd2 Re8 8.0-0 Nbd7 [D]**



[The position is equal.] **9.Rb1** [9.h3 Bf5 10.Be2] **9...e5 10.dxe5 Nxe5 11.Be2 Nxf3+ 12.Nxf3** [12.Bxf3= Bxf3 13.Qxf3] **12...Qd6** [12...Ne4 13.c4 Bxb2 14.Rxb2 Qf6] **13.h3** [13.c4=] **13...Bd7** [13...Bf5] **14.c4= c6 15.cxd5 cxd5 [D]**



[15...Nxd5= 16.Bxg7 Kxg7] **16.Bd3 Rac8 17.Qd2 Rc7** [17...Qe7 might be stronger.] **18.Rfc1 Rec8 19.Rxc7**

(Text cont. p.5)

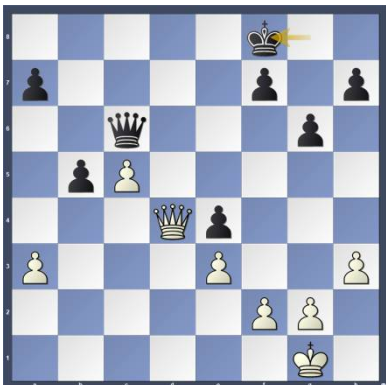
(Cont. from p.4) **19...Qxc7 20.Rc1 Qd8 21.Ne5 Bc6** [21...a6] **22.Rc2** [22.Qb4±] **22...Qe8** [22...Nd7= 23.Nf3 (23.Nxc6 Rxc6 24.Ba3 Bf8?) 23...Bxb2 24.Rxb2 Nc5] **23.Qc1** [D]



[23.Qa5±] **23...Qe6** [23...Ne4² 24.Qa1 (24.Nxc6 Rxc6 25.Bxg7 Rxc2) 24...f5] **24.a3** [24.Bd4±] **24...Ne4** [24...Ne8 was preferable. 25.Qa1 b6] **25.Nxc6** [White should try 25.Qa1±] **25...Bxb2??** [D]



[25...Rxc6= 26.Bxg7 Kxg7] **26.Qxb2?** [26.Ne7+!+- Kf8 (26...Qxe7 27.Rxc8+) 27.Rxc8+ Kxe7 28.Qc7+ (28.Qxb2 Qxc8 29.Qd4 Qc1+ 30.Kh2 Qc7+ 31.f4 Qc6±) 28...Qd7 29.Qb8] **26...Rxc6 27.Bxe4 dxe4±** [Endgame KQR-KQR] **28.b4 b5 29.Rc5 Rxc5 30.bxc5=** [KQ-KQ] **30...Qc6?** [30...Qc4!= and Black has nothing to worry.] **31.Qd4?** [31.Qe5+-] **31...Kf8** [D]

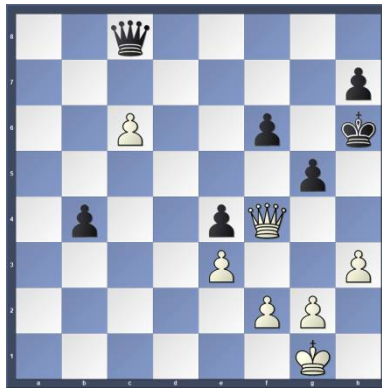


[31...f5=] **32.Qd8+! Kg7 33.Qe7! a5!**
(Text cont. next col.)

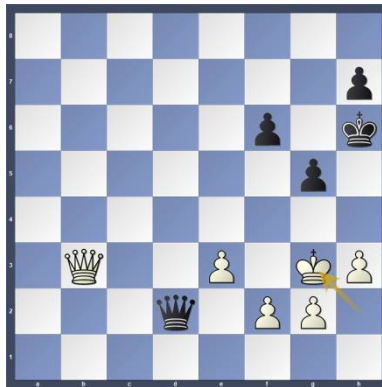
(Cont. from prev. col.) **34.Qe5+ f6?** [D]



[Black should play 34...Kf8] **35.Qe7+!+- Kh6?** [35...Kg8 36.Qd8+ Kf7] **36.Qd6 Qc8 37.c6 b4 38.axb4 axb4 39.Qf4+?** [39.c7 Qa8 40.Qe6] **39...g5?** [D]



[39...Kg7+-] **40.Qxe4??** [40.Qxf6+!! mates 40...Kh5 41.g4+ Qxg4+ 42.hxg4+ Kxg4 43.c7 Kh4 44.c8Q h5 45.Qc7 Kh3 46.Qg3#] **40...b3±** [White is better.] **41.Qb4 Qxc6 42.Qxb3 Qc1+ 43.Kh2 Qd2 44.Kg3** [D]



(Draw agreed) ½-½

Copy and paste the link below into your browser:

<http://view.chessbase.com/cbreade/r/2018/5/12/Game121430031.html>

Round: 2

Submitted by Terance with his comments and selected Fritz/Stockfish* comments [shown thusly].

White: Terance Hall (1889)

Black: Willard Moyer (1478)

Date: 5/11/2018

*(Please copy and paste the HTML link at the end of this article into your browser to read the complete Stockfish comments.)

[D45: Semi-Slav: 5 e3] **1.d4 d5 2.c4 c6 3.Nf3 Nf6 4.Nc3 e6 5.e3**

(Terance - I must say that I have not played Will for over 20 years and it is always a pleasure to play Will who has a great passion for this game of chess. I always remember how Will whips out his pieces and he did not disappoint in this Semi-Slav.)

5...Bb4 6.Qc2 [D]



(Terance - Here I was trying to decide what to play, either Bd3 or what I played Qc2. Bd2 was an option I didn't want to commit to as it blocks my Queen. Playing Bd3 was in step with normal lines.) [*Stockfish 9: 6.Bd3 b6 7.Qb3 a5 8.cxd5 cxd5, etc...] **6...b6 7.Bd3** (Terance - a3 was a strong candidate move here also.) **7...Ba6** [D]



(Terance: Wow! I didn't expect this as I thought Will would play 0-0, Nbd7, or Bb7. Na6 is a good novelty and the (Text cont. p.6)

(Cont. from p.5) third choice for Stockfish 9.] **8.b3** (Terance - Ne5 is also a good move but I wanted to take back with a pawn with a strong center.) **8...Ne4** (Terance - I thought castling was best before going on the offensive, but Stockfish 9 has Ne4 as the second move after 0-0 as about equal.) **9.Bxe4 [D]**



(Terance: Bb2 seems slightly better, but I chose Bxe4 to create a long-term effect on Black's center to push forward there and on the Queenside.) [9.Bb2 Nxc3 10.Bxc3 Bxc3+ 11.Qxc3 0-0] **9...dxe4=10.Nd2 Bxc3?!** (Terance - Black gives up the Bishop pair for no advantage and now hands White the advantage.) [10...f5 11.0-0=] **11.Qxc3 [D]**



11...f5 12.Ba3 [D]



(Terance - Played to prevent Black from castling. Take notice that since Black gave up his Black square Bishop White's Black square Bishop takes control over the dark squares from a3 to f8.) **12...Qf6** **13.Rc1** (Terance - (Text cont. next col.)

(Cont. from prev. col.) Stronger was 0-0. I played Rc1 for several reasons. One to protect my Queen that was hanging, two to prevent Black from playing an immediate c5 as I can take winning a pawn, and there to get the Rook on a1 off the diagonal that Black's Queen is on. All this is to avoid any tactics from Black.)

[*Stockfish 9: 13.0-0 c5 14.b4 cxd4 15.exd4 Nc6, etc...]

13...Nd7
14.0-0 c5 15.b4 [D]



(Terance - Here I thought a little to find the best move. First, I was thinking f3 but that is premature due to Bb7. Best was sticking to my plan where most of my pieces and advantage were. That was to open the center and Queenside as Black's King is still in the middle of the board.)

15...0-0 (Terance - Better was cxd4.) [15...cxd4 16.exd4 b5 17.f3 exf3 18.Nxf3±] **16.bxc5** [*Stockfish 9: 16.dxc5!? Qxc3 17.Rxc3 bxc5 18.b5 Bb7, etc...]

16...bxc5?! (Terance - Now White wins a pawn with a nice advantage.) [16...Rfc8!±] **17.Qa5 [D]**



(Terance - Here is the position I was aiming for a few moves back seeing that Black had two hanging minor pieces. I thought to myself, "There must me a way to exploit these hanging pieces." I found the move Qa5. The move Nb3 was also good in that (Text cont. next col.)

(Cont. from prev. col.) my Knight was my bad piece that I needed to get out and do something.) **17...e5** (Terance - Will plays the best move in this situation.) **18.dxc5 [D]**



(Terance - I spent the needed time to make the best move here. This exchange allows me to further cramp Black, as it creates a passed pawn, does not allow the Knight to b6, leaves the e5 pawn in place so the d7 Knight is restricted, threatens c6, and the discovery on the f8 Rook attacking the d7 Knight.) **18...Rfc8** [18...Rfd8 19.Nb3 Nf8 20.Rfd1±] **19.Nb3** (Terance - With this move it solidifies my advantage and opens the d-file for my f1 Rook to go to.) **19...Qe6** [19...Bb7 20.Rfd1 Qf7 21.Rd6+~] **20.Qa4!?** [forfeits some of the advantage] [20.Rfd1!? seems even better 20...Rc6] [*Stockfish 9: If 20...Bxc4 21.Rxc4 Qxc4 22.Rxd7 f4, etc...][21.Qa4 Rac8+~] **20...Rc7?? [D]**



[Causes further problems for Black] (Terance - Now the Rook is hanging as with my next move Black does not have time to double his Rooks.) [Better is 20...Bb7 21.Rfd1 Bc6±] **21.Rfd1+-** (Terance - At this point I knew I was winning as Black's pieces are overloaded and getting cramped.) **21...Bc8** [21...Bb7 doesn't improve anything 22.Rd6 Qe8 23.Na5+~] **22.Rd6 [D]** (p.7) (Text cont. p.7)

(Position after 22.Rd6) (From p.6)



(Cont. from p.6) **22...Qe7** [22...Qf7 hardly improves anything 23.c6 h6 24.Qa5+–] **23.Qa5!**? (Terance - I saw the move c6 was good so I looked for a better move (avoiding Nb6 after c6) and seeing that the c7 Rook was hanging, I found Qa5 as the best move.) **23...Nb8** [D]



24.c6! [D]

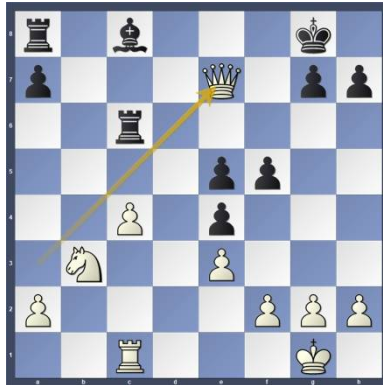


[Decoy: c6] (Terance - Now Black has no choice but to lose material, as the Queen is threatened by discovery of the a3 Bishop.) **24...Nxc6** [24...Nxc6 25.Qd5+ Decoy Double attack; 24...Rxc6 25.Rd8+ Discovered attack Double attack (25.Qd5+ Decoy)] **25.Rxc6!** [D] (Next col.) [Deflection: e7] **25...Qxa3** [25...Rxc6 26.Bxe7 Overloading Remove defender Deflection Discovered attack] **26.Qxa3** (Terance - This was the best way to take as Black's Rooks are not coordinated together. I can bring the Queen back to e7 and disrupt the Rooks.) (Text cont. next col.)

(Position after 25.Rxc6!) (From prev. col.)



(Cont. from prev. col.) **26...Rxc6** **27.Qe7** [D]

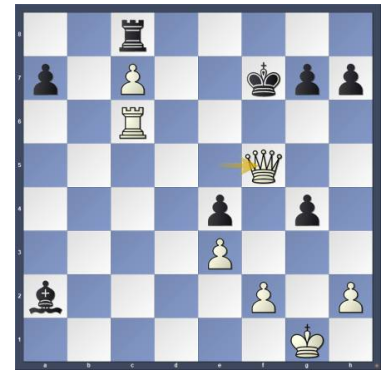


(Terance - This is a strong move to find the best reply for Black.) **27...Re6** **28.Qd8+ Kf7** **29.Qd5** (Terance - Played to pin the Rook.) [29.Nc5! Re8 30.Qd5+ Kf8] **29...Rb8** **30.Nc5 Kf6** **31.Nxe6** [31.Qd8+ Re7 32.Qf8+ Rf7] **31...Bxe6** **32.Qd6** **Rb6** **33.Qf8+ Kg6** **34.c5** [D]



(Terance - At this point Stockfish 9 sees a mate in 15 for White.) **34...Rb7** **35.c6 Rc7** [35...Rb6 a fruitless try to alter the course of the game 36.Qe7 Bxa2 37.h4 f4] **36.Qe8+** [36.Qd6 Kf6 37.Qxc7 a6] **36...Bf7** **37.Qxe5 Rc8** **38.c7** [38.g4 Kh6 39.Qxf5 g6] **38...Bxa2** [38...Bd5 does not solve anything 39.Rc5 Rf8] **39.g4** [39.Rc6+ Kf7 40.Qxf5+ Ke8 41.Qxc8+ Ke7] **39...fxg4** [39...Kh6 is not much] (Text cont. next col.)

(Cont. from prev. col.) help **40.Qxf5 g6** **41.Qxc8 Kg7**] **40.Rc6+ Kf7** **41.Qf5+** [D]



[41.Qf5+ Ke7 42.Qxc8 h6 43.Qd8+ Kf7 44.c8Q Bb3 45.Qb7#] **1-0**

Copy and paste the link below into your browser:

<http://view.chessbase.com/cbreader/2018/5/12/Game226474843.html>

Round: 4

Submitted by Steve with selected Fritz comments [shown thusly].

White: Sofiya Lysenko (886)

Black: Steve Atlee (1028)

Date: 5/25/2018

[A22: English Opening: 1...e5 2 Nc3 Nf6]

1.c4 e5 2.Nc3 Nf6 3.g3 Bb4 4.d3 d5 5.Qa4+ Nc6 [D]



[Black wants to play ...dxc4.] **6.cxd5 Qxd5 7.Nf3 0-0 8.Bd2** [The position is equal.] **8...Bxc3 9.Bxc3 Bd7 10.Bg2 Nd4 11.Qd1 Bg4** [D]



(Text cont. p.8)

(Cont. from p. 7) [Black is pushing.]
12.Bxd4 exd4 13.O-O h6 14.Nh4
 [14.Rc1=] **14...Qb5 15.Qd2 Rae8**
16.Rfe1 Re7 17.Qf4 [17.h3= remains
 equal. 17...Be6 18.a4] **17...Qxb2**
18.e3? [D]



[White should try 18.Rab1 Qxa2 19.h3]
18...dxe3-+ 19.fxe3 Rfe8 [19...g5-+
 20.Qf1 gxh4 21.gxh4 Kg7] **20.e4**
 [20.Rab1 Qc3 21.Qf2] **20...Be2?** [Better
 is 20...g5-+ 21.Qe3 gxh4 22.gxh4 Qe5]
21.Qf2= Ng4! [D]

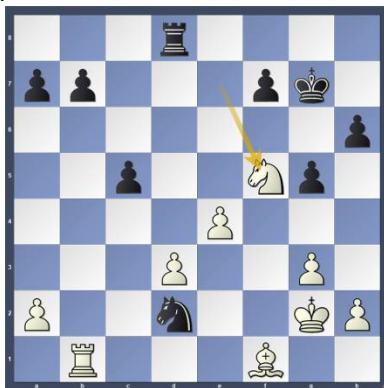


22.Qxe2 Qxe2? [22...Qb6+= 23.d4
 Qxd4+ 24.Kh1 Nf2+ 25.Kg1 Ng4+ 26.Kh1
 Nf2+ 27.Kg1 Nd1+ 28.Kh1 Qxa1 29.Rxd1
 Qe5] **23.Rxe2+- Rd8** [Better is 23...c5
 24.Rd1 b6] **24.Rb1** [Hoping for Bh3.]
24...c5 25.Rd2 Ne5 26.Bf1 g5
 [26...Red7±] **27.Nf5! [D]**



27...Nf3+ [27...Red7 is a better defense.]
28.Kg2 Nxd2 29.Nxe7+ Kg7 30.Nf5+
[D] (Next col.) **30...Kg6 31.Ne7+?**
 [31.Rxb7+- Nxf1 32.Kxf1] **31...Kh5?**
 [31...Kg7= 32.Rxb7 Nxf1 33.Kxf1 Rxd3
 34.Rxa7 h5]

(Position after 30.Nf5+) (From
 prev. col.)



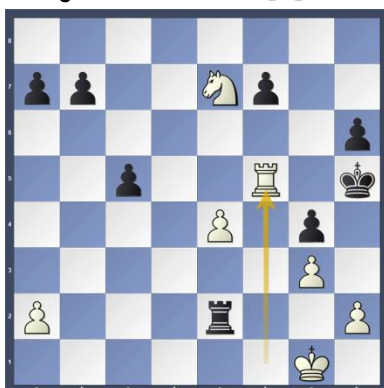
(Cont. from prev. col.) **32.Rd1**
 [Better is 32.Be2+ g4 33.Rxb7]
32...Nxf1 33.Rxf1 [D]



[Intending h3 and mate.] **33...Rxd3**
34.Kh3 g4+? [34...f6 35.Nd5 Rd4]
35.Kg2 Rd2+? [D]



[35...Rf3 36.Rxf3 gxf3+ 37.Kxf3 Kg5]
36.Kg1 Re2 37.Rf5#! [D]



1-0 (Text cont. next col.)

(Cont. from prev. col.)

Copy and paste the link below into
 your browser:

<http://view.chessbase.com/cbreader/2018/6/26/Game42103187.html>

Other places to play chess:

The below are for friendly off hand
 non-rated games (clocks optional).
 Bring chess set.

Monday evenings:

About 6:00 to 9:00 PM, "Starbucks," 10
 North Main Street,
 and / or "Nonno's Italian Coffee Parlor,"
 6 E. State St., Doylestown

Tuesday mornings:

9:30 AM to Noon at the Penridge
 Community Senior Center in Silverdale.
 Located on route 113 near route 152

Wednesday evenings:

7:30 to 10:00 PM, "Christ Reformed
 Church at Indian Creek" located at 171
 Church Road (intersection with Cowpath
 Road), Telford. (Temporarily closed
 during Lenten Season)

Weekdays:

8:00 to 4:00 Daily, Senior Center, 312
 Alumni Ave, Harleysville.

Friday Mornings:

10:00 AM up to 2:00 PM
 Indian Valley Public Library, 100 E.
 Church Ave, Telford.

Allentown Center City Chess Club

Offer (from Eric C. Johnson): "For
 any of our events -- If three or
 more Lansdale players carpool
 together -- the designated driver
 plays for free!"

<http://www.freewebs.com/allentowncentercitychessclub>

This concludes this issue. More
 games in next issue.