

~ En Passant ~

Newsletter of the North Penn Chess Club, Lansdale, PA – Spring 2018, Part 4

E. Olin Mastin, Editor

North Penn Chess Club
500 West Main Street
Lansdale, PA 19446

www.northpennchessclub.org

(215) 699-8418 donfunk@msn.com

This issue features games played in April by NPCC players.

The purpose of these newsletters is to include as many games as possible by NPCC players irregardless of the strength of the participants. Thanks to all for submitting games!

Games from the NPCC 2018

April Quads Tournament:

Round: 1

Submitted by Mike with selected Fritz comments [shown thusly].

White: Greg Sulat (1629)

Black: Michael O` Gara (1705)

Date: 4/6/2018

[B34: Sicilian: Accelerated Dragon with 5 Nc3: sidelines] 1.e4 c5 2.Nf3 Nc6 3.d4 cxd4 4.Nxd4 g6 5.Nc3 Bg7 6.Be3 Nf6 7.f3 0-0 8.Qd2 d5 [D]

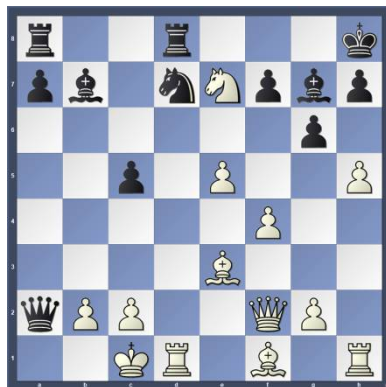


9.Nxc6 bxc6 10.e5 Nd7 11.f4 Bb7 12.0-0-0 Qa5 13.h4 Rfd8 14.h5 [Better is 14.a3] 14...c5!= [D]



(Text cont. next col.)

(Cont. from prev.col.) [White must now prevent ...d4.] 15.Nxd5 Qxa2 16.Nxe7+ [16.Nc3!= was the only way to keep the balance. 16...Qa1+ 17.Nb1] 16...Kh8 17.Qf2? [D]



[17.Qd3 Nf8 18.Qa3 Rxd1+ 19.Kxd1 Qb1+ 20.Ke2 Qxc2+ 21.Bd2]

17...Qa1+? [17...Nf6! 18.Nd5

(18.exf6 Qa1#) 18...Ne4] 18.Kd2+- Nxe5+! 19.Bd3 Rxd3+?

[19...Nxd3+- and Black stays clearly on top. 20.cxd3 Qxb2+ 21.Ke1 Qc3+ 22.Qd2 Re8 23.hxg6 Qxd2+] 20.cxd3 Qxb2+ 21.Ke1 Qc3+? [21...Qxf2+ and life is bright. 22.Bxf2 Bxg2] 22.Qd2 [D]



[22.Ke2± Re8 23.fxe5 Rxe7 24.hxg6 Qb2+ 25.Kf1 Qxf2+ 26.Kxf2 fxg6

27.d4 (27.Bxc5 Rf7+ 28.Kg1 Bxe5±)]

22...Nxd3+!= 23.Kf1? [White has to play 23.Ke2= Qf6 24.h6] 23...c4?

[23...Qxd2 24.Rxd2 Be4 25.hxg6 fxg6]

24.hxg6+- fxg6 25.Nxg6+ Kg8

26.Ne7+ [White mounts an attack.]

26...Kf8 [26...Kh8 27.Qe2 Qf6]

27.Nf5± Qxd2 28.Rxd2 Rd8?

[28...Be4± 29.Nxg7 Kxg7] 29.Bc5+?

[Weaker is 29.Bxa7 c3=; 29.Rxh7+- Rd7 30.Rc2 (30.Bxa7 c3+-)]

29...Kg8 [D] (Next col.) (Text cont. next col.)

Position after 29...Kg8 (From prev. col.)



(Cont. from prev.col.) [Hoping for ...c3.] 30. Nxg7 [30.Be3] 30...Kxg7

[Black should try 30...c3= 31.Rxd3

Rxd3] 31.Bb4 Rf8? [31...Kg6]

32.Bxf8+- [White is clearly winning.]

32...Kxf8 33.Rxh7 Be4

34.Rxa7 [D]



1-0

Copy and paste the link below into your browser:

<http://view.chessbase.com/cbreader/2018/5/12/Game78847125.html>

Round: 2

Submitted by Terance with his comments and selected Fritz/Stockfish* comments [shown thusly].

White: Terance Hall (1871)

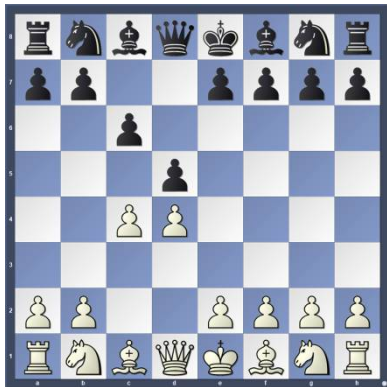
Black: Robert Kampia (1755)

Date: 4/13/2018

*(Please copy and paste the HTML link at the end of this article into your browser to read the complete Stockfish comments.)

[D15: Slav Defense: 4 Nc3 a6 and gambit lines after 4 Nc3 dxc4] 1.d4 d5 2.c4 c6 [D] (p.2) (Text cont. p.2)

Position after 2...c6 (From p.1)



(Cont. from p.1) 3.Nf3 Nf6 4.Nc3 Bg4?! [D]



(Terance - First inaccurate move as there is no pin. I know Bob likes to trade pieces but this is a little ambitious. Normally played is dxc4 or e6.) 5.Ne5 [D]



(Terance - This is the correct move to respond to the Bg4 move as now Blacks Bishop is threatened with a combination if not moved.) 5...Nbd7? (Terance - With this move White gets a huge advantage.) 6.Nxg4 Nxg4 7.e4 (Terance - The point of the combination is taking the center while threatening the Knight on g4. cxd5 also leads to the same threat.) [Stockfish 9*: 7.cxd5 cxd5 8.e4 Ngf6 9.e5 Ne4 10.Nxe4 dxe4, etc...] 7...Ngf6 8.cxd5 cxd5 9.e5 [D] (Next col.) 9...Ng8 (Terance - A little better was Ne4 as now Black loses a pawn with no compensation.) [Stockfish 9*: 9...Ne4 10.Nxe4 dxe4 11.Bc4 Rc8, etc...] 10.Nxd5 [D] (Next col.) (Terance - Why not take the pawn, (Text cont. next col.)

Position after 9.e5 (From prev. col.)



Position after 10.Nxd5 (From prev. col.)



(Cont. from prev. col.) the fruitage from the combination. Stockfish 9 prefers Bg5 line (see below): [Stockfish 9*: 10.Bg5 Qa5 11.a3 a6 12.b4 Qb6, etc...] 10...e6 11.Nc3 Ne7 12.Bd3 [D]



(Terance - I thought a little on this move as I had two choices. To prevent the Knight going to d5 or f5. I saw I can't stop the Knight going to d5 as Nb6 allows one Knight to go to d5. It was better to prevent Nf5 as I can use that diagonal for an attack as with a Knight on d5 won't necessarily hinder that diagonal. I also knew tactically that the d4 pawn was safe with the discovery move Bxh7. I also looked at Bg5 which was the strongest but I did not like the line with Qb6.) [Stockfish 9*: 12.Bg5 Qc8 (12...Qb6 13.Bb5 Rd8, etc...)] (Text cont. next col.)

(Cont. from prev.col.) 12...Nc6 [D]



(Terance - Putting pressure on the d4 and e5 pawns.) 13.Be3 (Terance - I spent a lot of time here calculating what if black plays Qh4 and Qb6. I knew developing was best and wanted to castle soon.) 13...Be7 [If 13...Qb6? Stockfish 9*: 14.O-O Qd8 (14...Qxb2?? 15.Nb5 Rc8, etc...)] 14.O-O [D]



15.a3 (Terance - Here I saw that f4 was probably the quickest and best move but I also saw that I could prevent counter play with a3 the next best move and even if f4 is played a3 would have to be played soon anyway. Qe2 was also possible according to the engines.) [Stockfish 9*: 15.f4 g6 16.a3 Rc8 17.Be4 Nb6 18.d5 exd5, etc...] 15...Nb6 (Terance - The only practical move I can see for Black to play.) [15...Bg5? Fails to 16.Qh5 h6 17.f4 Be7] 16.Qg4 [D]



(Text cont. p.3)

(Cont. from p.2) (Terance - Now is the time to start the attack! This is the strongest move even though Be4 is also good. Qg4 announces my intentions. Also helps protect d4. By the way Nxe5 fails to 17. Bxh7+ Kxh7 18. Qh5+ Kg8 19. dxe5!)

16...Kh8 17.Rad1 (Terance - The correct rook as the f1 Rook can help push f4 if needed.) **17...Rg8?? [D]**



[Sad, but how else could Black save the game?] [Better is 17...g6±] **18.Bxh7!+- [D]**



[Decoy: h7] **18...g6** [18...Kxh7 19.Qh5# Mate attack Decoy] **19.Bxg8** (Terance - I did see that I could play Qh3, but I knew I was winning and just simply played the straightforward line.) [19.Qh3 might be the shorter path 19...Bh4 20.Ne4 Rg7 21.Bxg6 Kg8+-] **19...Qxg8 [D]**



[19...Kxg8[D] (Next col.) cannot change what is in store for Black. 20.d5! the end, the rest is history 20...Nxd5 21.Qe4+-] (Text cont. next col.)

Position after 19...Kxg8[D] (From prev.col.)

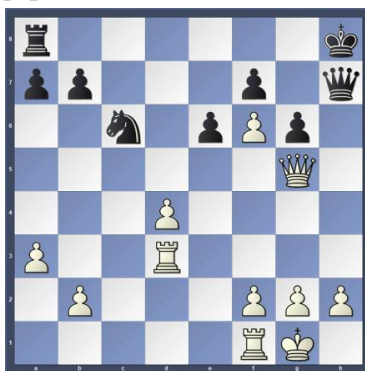


(Analysis Diagram)

20.Ne4 [D]



[20.d5 seems even better 20...Nxd5 21.Nxd5 exd5 22.Rxd5 Qe8+-] (Terance - my plan was to trade off the Bishop putting the pawn on f6, play Rd3, and swing it over to h3). **20...Nd5** [20...Kg7 doesn't get the bull off the ice 21.Bh6+ Kxh6 22.Nf6+-] **21.Bg5 Bxg5 22.Qxg5** [Better is 22.Nxg5 keeps an even firmer grip 22...Kg7 23.Rd3+-] **22...Qg7?** (Terance - Now the rest is a forced win trapping the Queen or King.) [22...Kg7 the only chance to get some counterplay 23.Rd3 Qd8+-] **23.Nf6 Nxf6 24.exf6 Qh7 25.Rd3 [D]**



(Terance - I immediately played this and Robert resigned.) [25.Rd3 Kg8 26.Rh3 Qxh3 27.gxh3 Nxd4 28.Qe3] **1-0**

Copy and paste the link below into your browser:

<http://view.chessbase.com/cbreader/2018/3/10/Game175511078.html>

Round: 2

Submitted by Olin with selected Fritz comments [shown thusly].

White: Will Moyer (1454)

Black: Olin Mastin (1507)

Date: 4/13/2018

[E90: King's Indian: Classical: Early deviations and 6 h3] **1.d4 Nf6 2.c4 g6 3.Nc3 Bg7 4.e4 d6 5.Nf3 0-0 6.Bd3 Na6 [D]**



7.0-0 c5 8.d5 e6 9.Re1 exd5 10.exd5 Re8 11.Bg5 [11.Rxe8± Nxe8 12.h3] **11...Bd7** [11...Rxe1!= 12.Nxe1 Qb6] **12.Qd2 Nb4 13.Be2 [13.Be4] 13...Bf5 14.Rac1 [14.Nh4!? Rxe2 15.Nxe2±] 14...Qd7 [D]**



[14...Qb6!=] **15.a3± Na6 16.h3 Ne4 17.Nxe4 Bxe4 18.b3 Nc7 [18...b5] 19.Nh2** [And now Ng4 would win.] **19...f6 20.Bh6 g5 21.Bxg7 Kxg7 22.Bh5 Bg6 23.Bxg6 Kxg6 24.Qd3+ Qf5 [D]**

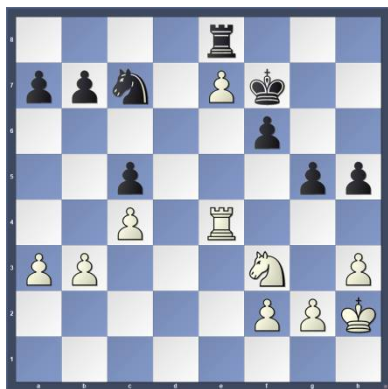


(Text cont. p.4)

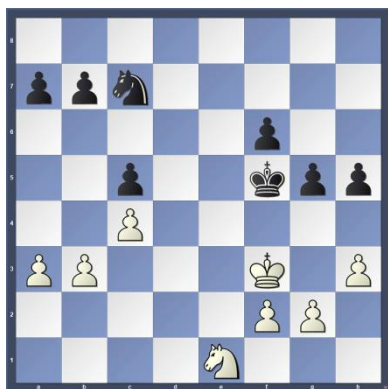
(Cont. from p.3) **25.Qg3** [25.Qc3!±] **25...h5?** [25...Rxe1+= and Black stays safe. 26.Rxe1 Re8] **26.Nf3** [26.Qxd6+- Na6 27.g4 hxg4 28.hxg4] **26...Kh6?** [26...Qf4!] **27.Qxd6+- Na6 28.Re6 Rxe6 29.Qxe6?** [D]



[29.dxe6+- Qf4 30.Qxf4 gxf4 31.Rd1] **29...Qxe6 30.dxe6+-** [Endgame KRN-KRN] **30...Re8 31.Re1 Kg6 32.Re4 [32.h4] 32...Nc7= 33.e7 Kf7 34.Kh2 [D]**

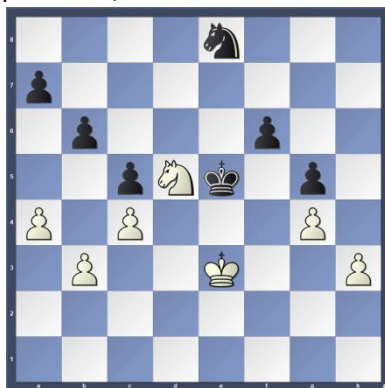


[34.Re3= feels stronger.] **34...Rxe7 35.Rxe7+ Kxe7** [KN-KN] **36.Kg3 Ke6 37.Ne1** [37.Nd2] **37...Kf5?** [37...Ke5!- + 38.Nc2 Ne6] **38.Kf3!=** [D]

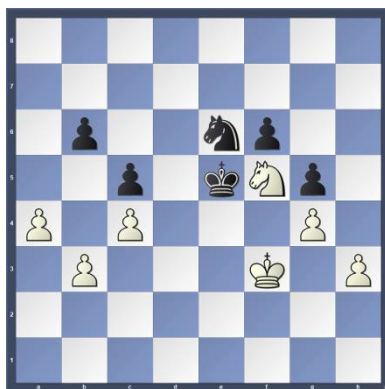


38...h4 39.Nd3 b6 40.g3 hxg3 41.fxg3 Ne6 [41...Ne8=] **42.g4+ Kg6 43.Ke4 Nc7 44.Nb2** [44.b4] **44...Kf7= 45.Nd1 Ke6 46.Ne3 Ne8 47.Nd5 Nd6+ 48.Ke3 Ke5 49.Ne7 Ke6 50.Nd5 Ke5 51.a4** [Better is 51.Ne7=] **51...Ne8?** [D] (Next col.) (Text cont. next col.)

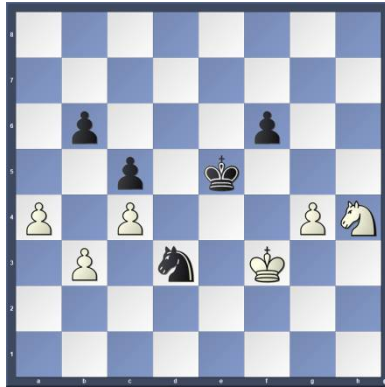
(Position after **51...Ne8?** (From prev. col.)



(Cont. from prev. col.) [51...f5] **52.Ne7!± Nc7?** [52...a5±] **53.Nc6+- Kd6 54.Nxa7 Ne6** [Better is 54...Ke5 55.Nc8 Na8] **55.Nc8+ Kc7 56.Ne7 Kd6 57.Nf5+?** [57.Nd5+- is the precise move to win.] **57...Ke5± 58.Kf3?** [D]

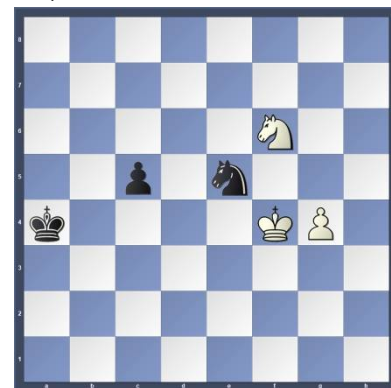


[58.Kd2!± keeps the pressure on.] **58...Nf4?** [58...Nd4+! stays on course. 59.Nxd4 Kxd4] **59.h4 gxh4 60.Nxh4 Nd3** [D]

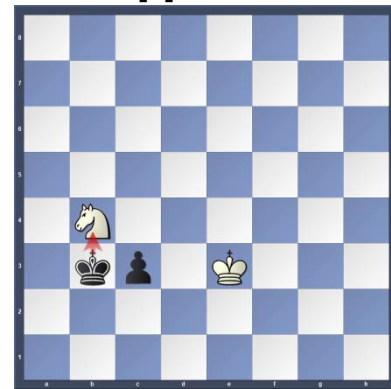


61.Ng6+ [61.Ke3!± Nc1 62.Ng6+ Kd6 63.Nf4] **61...Kd4 62.Nf4** [Threatens to win with Nxd3.] **62...Ne5+ 63.Kg3** [Black must now prevent Nd5.] **63...Kc3 64.Nd5+ Kxb3 65.Nxb6** [Hoping for a5.] **65...Nxc4** [65...Kb4!-] **66.Nd5 [66.Nd7!] 66...Kxa4= 67.Nxf6 Ne5 68.Kf4** [D] (Next col.) (Text cont. next col.)

(Position after **68.Kf4** (From prev. col.)



68...Nxg4 [68...Nf7=] **69.Nxg4** [KN-KP] **69...c4 70.Ke3 c3 71.Nf2 Kb3 72.Nd3 Kc2 73.Nb4+** [73.Ke2!] **73...Kb3!** [D]



74.Nd3 c2 [74...Kc2!-] **75.Kd2 c1Q+ 76.Nxc1+** [D]



1/2-1/2

Copy and paste the link below into your browser:

<http://view.chessbase.com/cbreader/2018/6/6/Game41333781.html>

Round: 2

Submitted by Stan with his comments and selected Fritz comments [shown thusly].

White: Mike O'Gara (1705)

Black: Stan Ward (1529)

Date: 4/13/2018 (Text cont. p.5)

(Cont. from p.4) [D18: Slav Defense: 5 a4 Bf5 6 e3] **1.d4 d5 2.c4 c6** (Stan - The Slav complex of the Queen's Gambit gained significant popularity in the years leading up to WW2. It was prominent during the 1935–37 world title matches between Alekhine and Euwe. With the solid 2...c6 black supports his queen's pawn without hemming in his light squared bishop which can then go to either f5 or g4. After WW2 the Slav's popularity declined as the post war masters tended to gravitate towards new ideas and asymmetrical positions. Since the 1980's the "old" openings started to make a comeback and the Slav complex was no exception having since been played in several world championship matches.) **3.Nc3 Nf6 4.Nf3 [D]**

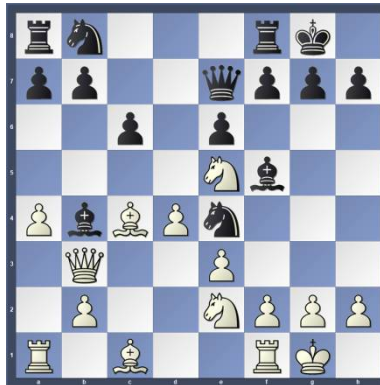


4...dxc4 (Stan - 4...e6, the Semi-Slav is probably the main alternative to the text.) **5.a4** (Stan - The main line of the Slav defense. By playing this move white ensures that he will recover the pawn.) **5...Bf5** (Stan - The whole point of playing 4...dxc4 is to get rapid piece development, which he does. However this comes at the cost of spatial concessions in the center. Black can't usually prevent white from obtaining pawns on e4 and d4 but he develops his light squared bishop quickly by QGD standards. The other 2 variations are 5...Bg4 ((Bronstein variation)) and 5...Na6 ((Smyslov variation)).) **6.e3 e6 7.Bxc4 Bb4 [D]**



(Text cont. next col.)

(Cont. from prev. col.) **8.0-0 0-0** (Stan - This line became popular following the above mentioned World Championship matches between Alekhine and Euwe in Holland in 1935 and 1937.) **9.Ne2 [9.Qe2] 9...Ne4** (Stan - ?! Premature. 9...Nbd7 is essential and not playing it here is where much of black's later problems stem from. Usually White plays 9.Qe2 where Ne4 is playable. In the game Flohr-Capablanca, AVRO 1938, black played 9...Ne4 10.Na2 Be7 11.Bd3 Ng5 12.Ne1 Bxd3 13.Nxd3 Na6 14.Nc3 h6 15.Rd1 Nh7 16.Ne5 Qc7 17.e4 with a slight pull for white. The game eventually ended as a draw, but this was an older Capablanca, not the World champion of the 1920's. Tukmakov recommends 13...Ne4 14.Nc3 Nf6 15.b4 Nd5 16.Nxd5 cxd5 17.d2 Nd7 =.) **10.Qb3 Qe7 [10...c5=] 11.Ne5 [D]**



[Hoping for f3.] **11...Bd2?** (Stan - ? A definite mistake. At this point 11...a5 is required so that the Knight at b8 can develop to d7 and challenge the e5 knight. 11... a5 12.f3 Nd6 13.e4 Bg6 14.Nxg6 hxg6 and black still has fighting chances.) [11...Nf6= and Black is okay.] [11...a5 12.f3 Nd6 13.e4 Bg6 14.Nxg6 hxg6 [D]



Analysis Diagram

12.Rd1? (Stan - We both had missed 12.f3 Bxc1 13.fxe4 Bxe4 14.Raxc1 gaining 2 pieces for a pawn and a piece + enormous pressure on the f7 pawn from 2 directions.) [12.f3+- Bxc1 13.fxe4 (13.Rfxc1 Nd2±) 13...Bxe4 14.Raxc1] [D](Next col.) (Text cont. next col.)

(Position after 14.Raxc1) (From prev. col.)

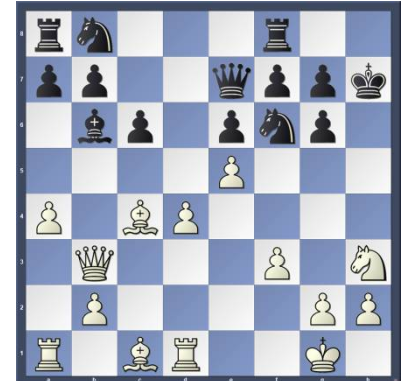


Analysis Diagram

(Cont. from prev. col.) **12...Ba5** [12...Bxc1 13.Raxc1 Nd6 at least puts up more resistance] [12...Bxc1 might be stronger. 13.Raxc1 (13.Rdxc1 Nd6) 13...Nd6] **13.f3± 13...Nf6** [Nd6 is better.] [13...Nd6±] **14.e4 [D]**



[White is in control.] **14...Bg6** **15.Nxg6** [White should try 15.Bg5+-] **15...hxg6 16.Nf4** (Stan - and white starts to tighten the screws. Any reply was better than the following text move.) [Better is 16.Bg5] **16...Kh7 [?][16...Re8±] 17.Nh3 [17.Be3+-] 17...Bb6** (Stan - still trying to free 2 pieces that by move 17. have yet to move from their original squares. The N needs to be on h7 here but black's poor 16th move prevents it.) [17...Kg8± 18.Nf4 Qc7] **18.e5 [D]**



18...Nd5 (Stan - black is desperate to get some counterplay but it's far too late now.) (Text cont. p.6)

(Cont. from p.5) **19.Ng5+** [Better is 19.a5+- Bd8 20.Ng5+ Kg8 21.Ne4] **19...Kh8?** [19...Kg8± 20.a5 Bd8] **20.f4+-** [D]



[White wants to mate with Qh3+.] **20...Nf6 21.exf6** (Stan - and Black resigned. A really well played game by white. The theory of the main line Slav is that black makes spatial concessions in the center in exchange for active piece play. By not adhering to this principle black paid the ultimate price. **1-0**

Copy and paste the link below into your browser:

<http://view.chessbase.com/cbreader/2018/4/21/Game793306406.html>

Round: 2

Submitted by Bill with selected Fritz comments [shown thusly].

White: Bill Champion (1470)
Black: George Murphy (1433)
Date: 4/13/2018

[D05: Colle System with ...e6] **1.d4 e6 2.Nf3 d5 3.e3 Nf6 4.Bd3 c5 5.c3 Nc6 6.Nbd2 Bd7 7.Qc2** [D]



7...cxd4 8.exd4 g6 [Controls f5] **9.Nb3 Bg7 10.Bg5 0-0 11.Ne5 Qc7 12.f4 Rac8 13.0-0-0 Nb4?** [Better is 13...Be8 14.Bxf6 Bxf6=] **14.Qb1??** [D] (Next col.) [Letting the wind out of his own sails] [Better is 14.cxb4 and White is on the road to success 14...Qd6 15.Nc5+- b6 16.Bxf6 Bxf6 17.Nexd7 Bxd4 18.Nxf8 Kxf8 19.Ba6 Rc7 20.Rxd4 bxc5 (Text cont. next col.)

(Position after 14.Qb1??) (From prev. col.)



(Cont. from prev. col.) **21.bxc5 Qxa6 22.Kb1+-** **14...Nxd3+ 15.Qxd3 Ne4 16.Bh4 b6** [16...Ba4!?] **17.Nd2 Nxd2 18.Rxd2 Bxe5** [18...Be8!? 19.Qe3 b5=] **19.fxe5** [Opposite colored bishops appeared] **19...Qc4** [Black threatens to win material: Qc4xa2] **20.Qb1** [20.Qxc4 dxc4 21.Rf2 Bc6] **20...a6** [20...b5 21.Be7 Rfe8 22.Bc5=] **21.a3 Ba4 22.Bg5 Bb3** [22...Rc7 23.h4] **23.h4** [23.Qd3 Qxd3 24.Rxd3 b5] **23...a5** [D]

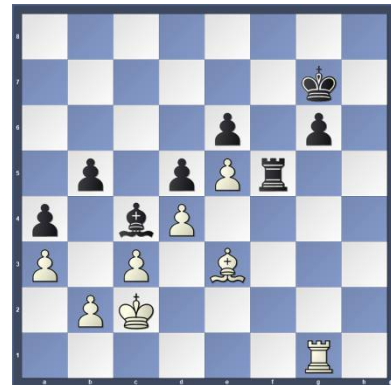


24.h5 b5 25.hxg6 fxg6 26.Qd3 26...Qxd3 [Black has a mate threat] **27.Rxd3 Rf2 28.Rdh3 Rf7 29.Bd2** [29.Bf6 b4=] **29...Rcf8** [29...b4] **30.Re1** [Better is 30.Bh6!? is an interesting idea 30...Rf1+ 31.Rxf1 Rxf1+ 32.Kd2=] **30...Rf2 31.Rh2 R8f5 32.Be3 Rf1** [D]

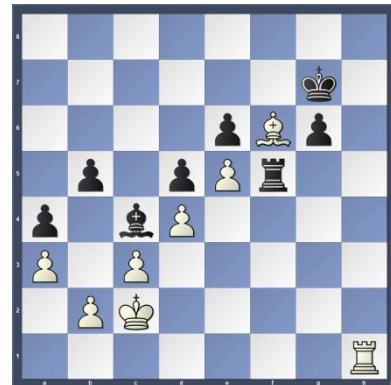


[Better is 32...Rc2+!? 33.Kb1 h5] **33.Rh1 Rxe1+ 34.Rxe1 h5 35.Rg1 Kh7** (Text cont. next col.)

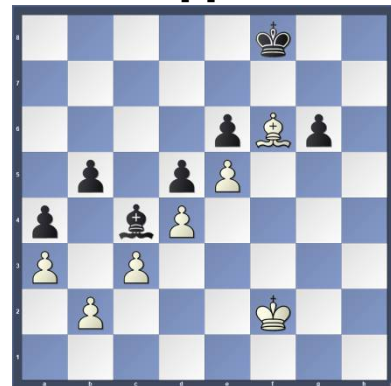
(Cont. from prev. col.) **36.g4 hxg4 37.Rxg4** [Black has a new passed pawn: g6.] [37.Kd2!?!] **37...Rf1+ 38.Kd2 Rf5** [38...Rb1!?!] **39.Rg1 Kg7 40.Rh1 Rh5 41.Rf1 Rf5 42.Rg1 Kh7 43.Ke1 Bc4 44.Kd2 Kg7 45.Kc2 a4** [D]



[Black gets more space] **46.Bg5 Kh7 47.Rh1+ Kg7 48.Bh6+ Kh7** [48...Kf7 49.Rg1=] **49.Bg5+ Kg7** [Twofold repetition] **50.Bf6+** [D]

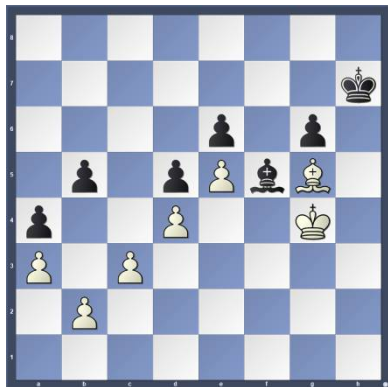


[Praise the bishop!] **50...Kg8 51.Kd2 Rh5** [Black threatens to win material: Rh5xh1] **52.Rg1 Kf7 53.Rg2 Kf8** [53...Rh3 54.Rf2=] **54.Rf2 Rf5 5.Ke3 Rxf2 56.Kxf2** [D]



[A bishop endgame occurred] **56...Kg8 57.Kg3 Bd3 58.Kg4 Kh7 59.Bg5** [A sound move] **59...Bf5+** [D] (Next col.) ½-½ (Text cont. p.7)

(Position after 59...Bf5+) (From p.6)



(Cont. from p.6)

Copy and paste the link below into your browser:

<http://view.chessbase.com/cbreader/2018/5/23/Game1067513281.html>

Round: 3

Submitted by Bill with selected Fritz comments [shown thusly].

White: Will Moyer (1454)

Black: Bill Champion (1470)

Date: 4/20/2018

[B50: Sicilian: 2...d6, Miscellaneous] 1.e4 c5 2.Nf3 d6 3.c3 Nf6 4.Be2 Bd7 5.d3 e5 6.Qb3 Qc7 7.Ng5 [D]



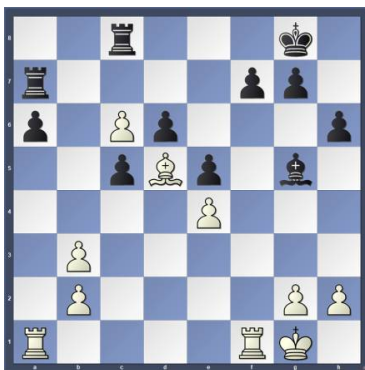
7...Bc6 8.Be3 [8.0-0 h6 9.Nf3 Be7=] 8...h6 9.Nf3 Be7 10.Nbd2 [10.c4 Bd7=] 10...Ng4 [10...d5 11.exd5 Nxd5 12.d4 exd4 13.cxd4] 11.0-0 Nd7 12.d4 Nxe3 13.fxe3 [Black has the pair of bishops] 13...Nf6 14.Bc4 0-0 15.Nh4 [Better is 15.d5!? must definitely be considered 15...Bd7 16.a4=] 15...b5 16.Be2 Nxe4 17.Nxe4 Bxh4 18.Nd2 [D] (Next col.) [Better is 18.d5!? Bd7 19.c4] 18...Bg5+- 19.c4 [19.d5 Bxe3+ 20.Kh1+-] 19...Qb7?? [instead of simply winning the game] [Better is 19...exd4 and Black has it in the bag 20.cxb5 Bxe3+ 21.Kh1 Rab8-+] 20.d5 [This push gains space] 20...bxc4 21.dxc6 Qxb3 22.Nxb3 [22.axb3 Bxe3+ 23.Kh1 Bxd2 24.Bxc4 Rac8=] (Text cont. next col.)

(Position after 18.Nd2) (From prev. col.)

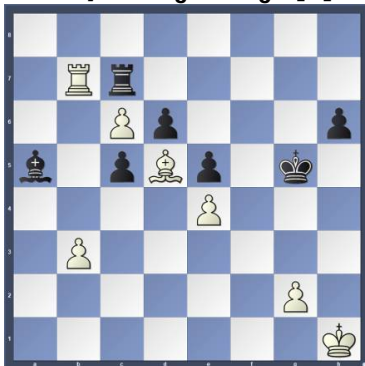


(Cont. from prev. col.)

22...cxb3 [22...Bxe3+ 23.Kh1 cxb3 24.axb3] 23.e4 [23.Kf2 Rac8 24.Bf3 e4 25.Bxe4 Rfe8] 23...a6 [Better is 23...Rac8!?] 24.axb3= Rfc8 25.Bc4 Ra7 26.Bd5 [D]

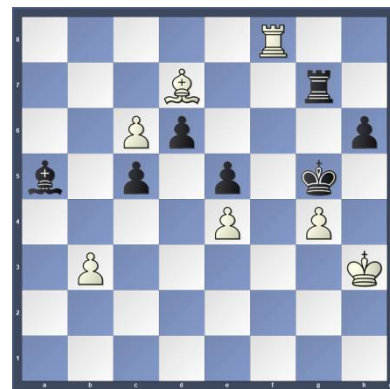


[A beautiful square!] 26...Be3+ 27.Kh1 Bd4?? [Releasing the pressure on the opponent. Black can be proud of that piece] [27...Kf8 28.Rf3 Bd4 29.Raf1=] 28.Ra2?? [Letting the wind out of his own sails] [Better is 28.Rxf7 White had this great chance 28...Rxf7 29.Rf1+-] 28...Kf8= 29.Rfa1 Ke7 [29...Rca8 30.g4 Ke7 31.Rf1=] 30.Rxa6 Rxa6 [Black has a mate threat] 31.Rxa6 Rc7 32.Rb6 [32.Ra2 Kf6] 32...Bxb2 [32...Kd8!?!=] 33.Bxf7± Bc3 34.Rb7 [34.Bd5 Kd8±] 34...Ba5 [34...Kd8 35.Bd5] 35.Bd5± Kf6 [35...Kd8 36.Rb5 Bc3 37.Kg1±] 36.h4 [36.Rb8 g6±] 36...g5 [36...Rxb7 37.cxb7 Bc7 38.Kh2±] 37.hxg5+ Kxg5 [D]

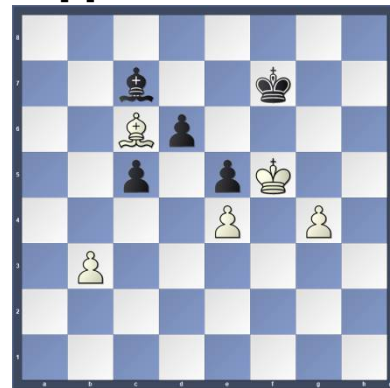


(Text cont. next col.)

(Cont. from prev. col.) 38.Rb8 Rg7 39.Rf8 Bb6 40.Kh2 Bc7 41.Kh3 Bb6 42.Rf5+ Kg6 43.g4 Ba5 44.Rf8 Bc7 [44...h5!?!±] 45.Be6+- Kg5 [45...Re7 46.Bd7+-] 46.Bd7 Ba5?? [D]



[The pressure is too much, Black crumbles] [46...h5 47.Rf5+ Kh6 48.Rxh5+ Kg6 49.Rf5 Rh7+ 50.Kg3+-] 47.Rf5+ Kg6+- 48.Be8+ Kh7 49.Kh4 [49.Bf7!? Rg5 50.Rf1 Bb6+-] 49...Bd8+± 50.Kh5 [50.Kg3!?!±] 50...Rg5+ 51.Rxg5 hxg5 52.c7 [White has a mate threat] 52...Bxc7 53.Kxg5 [White has a new passed pawn: g4] 53...Kg7 54.Kf5 Kf8 [54...Ba5 55.Ke6 Bb4 56.g5] 55.Bc6 Kf7 [D]

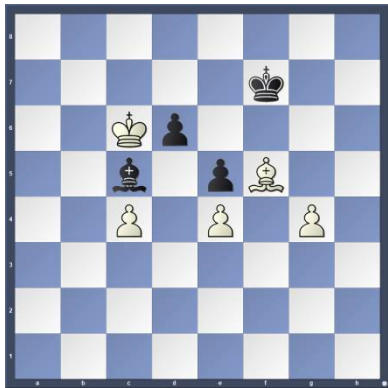


[55...Ke7 56.g5] 56.Bd5+± Kg7 [56...Ke7!?!±] 57.Ke6+- Kg6 58.Bc4 [58.Kd7!? Ba5 59.Kxd6+-] 58...Kg5± 59.Kd7 Bb8?? [Another bit of territory lost] [Better is 59...Bb6!?!±] 60.Be6 [Better is 60.Kc8 and White can already relax 60...d5 61.exd5+-] 60...Kf6 61.Bf5 Kf7 [61...Kg5+-] 62.Kc8?? [A transit from better to worse] [Better is 62.g5+- with excellent chances for White] 62...Ba7 63.Kb7 c4 64.bxc4 [White has a new backward pawn: c4.] 64...Bc5 65.Kc7 [65.g5 Bb4 66.Kc6 Ke7 67.Bh7 Ba3 68.Kc7 Kf7 69.Bf5 Ke7] 65...Ba3 66.Kc6 Bc5 [D] (p.8) ½-½

Copy and paste the link below into your browser:

<http://view.chessbase.com/cbreader/2018/5/29/Game63748765.html>

(Position after 66...Bc5) (From p.7)



Round: 3

Submitted by Olin with my comments and selected Fritz/Stockfish comments [shown thusly].

White: George Murphy (1433)

Black: Olin Mastin (1509)

Date: 4/20/2018

*(Please copy and paste the HTML link at the end of this article into your browser to read the complete Stockfish comments.)

[E70: King's Indian: Miscellaneous lines with 4 e4, including 5 Nge2 and 5 Bd3 0-0 6 Nge2] 1.d4 g6 2.e4 Bg7 3.c4 d6 4.Nc3 Nf6 5.Nge2 0-0 6.g3 [6.h3] 6...Na6 [D]



7.a3 [7.Bg2] 7...c5= 8.d5 [8.f3 is more appropriate.] 8...e6 [8...Nc7=] 9.Bg2 [9.dxe6 Bxe6 10.Nf4] 9...Rb8 [D]

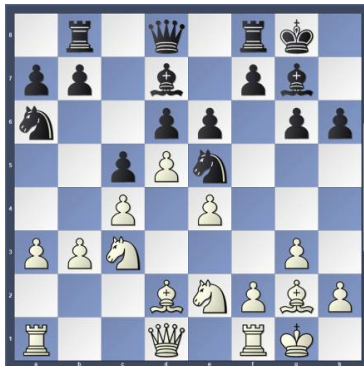


[Black should try 9...exd5 10.cxd5 c4]

10.0-0 [10.dxe6 Bxe6 11.Bf4] 10...Bd7

(Text cont. next col.)

(Cont. from prev. col.) [10...exd5= 11.cxd5 b5] 11.Bg5 [11.dxe6± Bxe6 12.Bf4] 11...h6 [11...Nc7= remains equal.] 12.Be3 [12.Bf4±] 12...Ng4 [12...exd5= 13.Nxd5 (13.cxd5 Ng4=) 13...Nxd5 14.cxd5 Bxb2] 13.Bd2 [13.dxe6 Bxe6 14.Bf4] 13...Ne5 [13...Nc7=] 14.b3 [D]

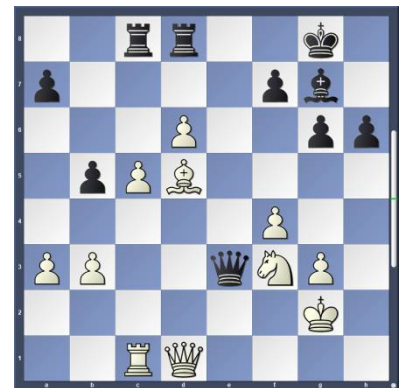


14...Nc7 [14...exd5!= 15.Nxd5 (15.exd5 Re8=; 15.cxd5 c4=) 15...Nc7] 15.f4± Ng4! 16.h3 [16.dxe6± Nxe6 17.h3] 16...Nf6 [Better is 16...exd5 17.hxg4 (17.cxd5 Nf6) 17...d4] [Stockfish 9: 17...d4 18.f5 dxc3 19.Bxc3 Bxc3 20.Nxc3 Qf6, etc...] 17.Rc1? [17.dxe6± Nxe6 18.Ra2] 17...b5? [17...exd5 stays ahead. 18.cxd5 Re8] 18.e5 [18.dxe6!± Bxe6 19.f5] 18...Nfe8 19.Ne4 [19.Be3±] 19...exd5 20.Nxd6 [White should play 20.cxd5= Nxd5 21.Nxd6 (21.exd6 c4=) 21...Nxd6 22.exd6] 20...Nxd6 [20...bxc4 21.bxc4 Nxd6 22.exd6 Ne8 23.cxd5 Nxd6] 21.exd6 [21.cxd5= is superior. 21...Nb7 22.Kh2] 21...Ne6 [21...Ne8 22.cxd5 c4] 22.Bxd5 [22.f5! gxf5 23.cxd5 (23.Bxd5 Qb6±)] 22...Nd4 [D]

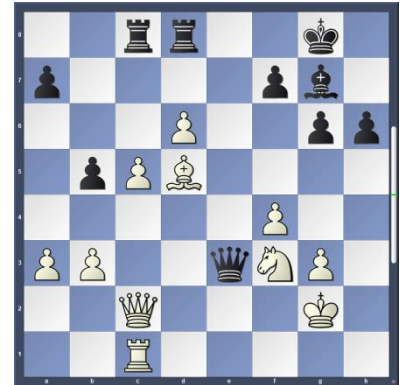


23.Be3 [23.Nxd4= Bxd4+ 24.Kh2] 23...Bxh3? [23...bxc4!µ 24.Bxc4 (24.Bxd4 cxd4 25.bxc4 Bxh3) 24...Rb6] 24.Bxd4 cxd4 25.c5 [White is more active.] 25...Bxf1 [25...Qf6!= keeps the balance.] 26.Kxf1± Qe8 [26...Qf6± was called for.] 27.Nxd4 Qe3 28.Nf3 Rfd8 29.Kg2 Rbc8 [D] (Next col.) (Text cont. next col.)

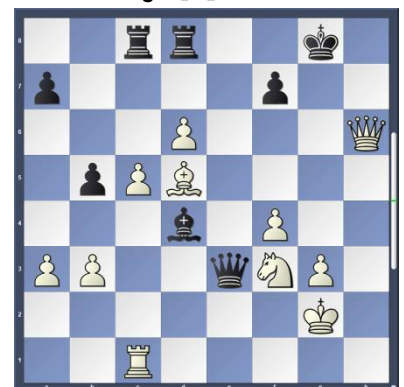
(Position after 29...Rbc8) (From prev. col.)



(Cont. from prev. col.) 30.Qc2?? [D]



[30.b4!+- is the narrow road to win.] 30...Bd4?? [30...Rxd6!+- 31.cxd6 Qxc1 32.Qxg6 Qc2+ 33.Qxc2 Rxc2+ 34.Kh3 Kf8; 30...Kf8] 31.Qxg6+- [Not 31.Nxd4 Rxd6 32.Bc4 Rxc5] 31...Kh8 32.Qxh6+ Kg8 33.Qg6+ Kh8 34.Qh6+ [34.Rh1#] (Olin – Incredibly, neither one of us saw this mate-in-one!! We simply agreed to a draw??! After the game, Will Moyer, who was watching, showed us the simple mate!!) 34...Kg8 35.Qg6+ Kh8 36.Qh6+ Kg8 [D]



[An unexpected result!] ½-½

Copy and paste the link below into your browser:

<http://view.chessbase.com/cbreader/2018/4/21/Game802617265.html>