

~ En Passant ~

Newsletter of the North Penn Chess Club, Lansdale, PA – Spring 2018, Part 1

E. Olin Mastin, Editor

North Penn Chess Club
500 West Main Street
Lansdale, PA 19446

www.northpennchessclub.org

(215) 699-8418 donfunk@msn.com

This issue features games played and annotated by Matt Martello who won tied for First Place in the Under 2000 Section of the 2018 Philadelphia Open winning \$3500!!

The purpose of these newsletters is to include as many games as possible by NPCC players irregardless of the strength of the participants.

Thanks to all for submitting games!

Games from the 12th Annual Philadelphia Open Tournament:

Round: 1

White: Kameliia Sharuda (1757)
(New Jersey)

Black: Matt Martello (1928) (Pennsylvania)

Date: 3/31/2018

Time Control: Game 30 Minutes with 10 Second Delay

All commentary is by Matt (as edited) except for interjected italicized Fritz comments shown enclosed in brackets.

[C91: Closed Ruy Lopez: 7...d6 8 c3 0-0 9 d4] (Before the game even started, my opponent was about 20 minutes late.

The time controls for our game was 30 minutes with 10-second delay. Consequently, I was up in a huge amount of time. When she got to the board, she had about 10 minutes left. She was in extreme time pressure from the start.

Moreover, I was at a huge advantage. I was rewarded for being on time while she was penalized for being late. I had a huge time advantage and my opening theory is very strong and deep since I have studied and memorized opening lines over the years from playing chess. So when she finally arrived, my strategy was to do a quick opening that I knew not using any time to keep her on extreme time pressure. My initial plan was get her in a tough position where she would use more time and possibly make a mistake. However, it did not work out the way I planned.)

1.e4 e5 2.Nf3 Nc6 3.Bb5 [D] (Next col.) (Text cont. next col.)

Position after 3.Bb5 (From prev. col.)

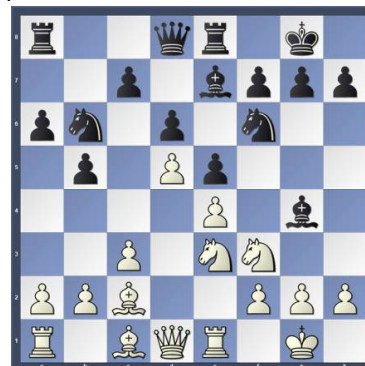


(Cont. from prev.col.) 3...a6 (Ruy Lopez System; I was moving fast to use the clock against her.) 4.Ba4 Nf6 5.O-O Be7 6.Re1 b5 7.Bb3 d6 8.c3 O-O 9.d4 Bg4 [D]

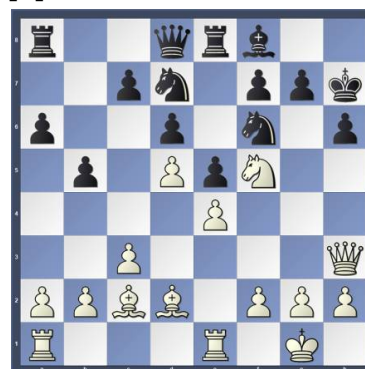


(Ruy Lopez Closed: Bogolyubov Variation; Still moving fast to use the clock against her.) 10.d5 Na5 11.Bc2 Nc4 (At this point, I did not know exactly how to continue. I was thinking to get my Knight to c4 to attack some of her territory.) 12.Nbd2 Nb6 (I did not want to trade off here because I did not want to activate her dark-squared Bishop on c1. I therefore retreated the Knight back to b6. This is a little bad for me because I am wasting tempi by moving the Knight when it was not forced to be moved. I did two "wasted moves" with the Knight, but at the same time I was re-positioning my Knight into a better position) 13.Nf1 Re8 14.Ne3 [White has an edge.] [D] (Next col.) 14...Bxf3 (Here I traded off for two reasons: The Bishop was attacked. I saw in other variations of Bg4 it was fine to trade Bishop for Knight.) 15.Qxf3 (She got her Queen (Text cont. next col.)

Position after 14.Ne3 (From prev. col.)



(Cont. from prev.col.) in a strong position and I was getting a little nervous at this point. The Bishop for Knight trade was not as good. She was ahead about 0.77 by computer score. This is when I started to think more and losing time. She was starting to come back with time at this point.) 15...Nbd7 16.Nf5 (The Knight was in a very strong position on the f5 square supported by the e4 pawn. This was a thorn in my side for the duration of the game. This also happened to me in the Championship Round where the Knight was on f5. White is up about 1.35 in computer score. She had about five minutes left while I had about eight minutes left. She was really coming back on time.) 16...Bf8 17.Bg5 h6 18.Bd2 (I was relieved when she pulled the Bishop back to d2. I thought that she should have kept the pressure on the h4-d8 diagonal to keep pinning the Knight to the Queen.) 18...Kh7 [18...Qc8± keeps fighting. 19.Qg3 Kh7] (I was planning Ng8 to defend the h6 square and defense.) 19.Qh3 [D]



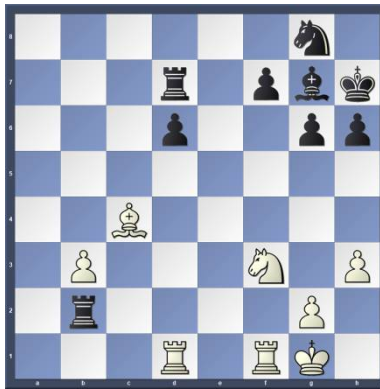
(Text cont. p.2) Page 1 of 8

(Cont. from p.1) (Obviously, she is putting pressure on me.) **19...Ng8** [19...Nc5± was worth a try.] **20.f4 g6** (Trying to finish development for my natural Ruy Lopez Defense.) **21.Ng3 exf4 22.Bxf4 Ne5** (At this point, I have to worry about the Bc2 attacking my King and my defense.) **23.Rf1 Qe7** [Black should play 23...Bg7] **24.Ne2 Bg7 25.Rae1** (She was centralizing her pieces. At this point she had about five minutes left and I had about six minutes left.) **25... Rf8 26.Nd4 Qd7 [D]**



(I had about four minutes left while she had five minutes left. Not only did she catch up on time, but she went ahead of me on time as well!) **27.Qe3 Rae8** (I was fighting for the center.) **28.h3 Re7 29.b3 Rfe8** (I decided to double up the Rooks on the e-file trying to use that to my advantage.) **30.Bxe5 Rxe5** (I thought this trade was very good for me as it helped turn the game around mentally.) **31.Nf3?** (This was her first mistake of the game. I capitalized on it turning the game around in my favor.) **31...Rxd5 32.Qa7 Rc5 33.Qxa6 Rxc3 34.Rc1 Qc6** [34...Re7→ Threatens to win with ...Rc6. 35.Bb1 b4] **35.Qxc6** (I should have just taken the pawn. I was in time pressure and did not want any surprises.) **35...Rxc6 36.e5?** [36.Bd3= and White stays safe. 36...Rc3 37.Bxb5 Rxe4 38.Bc4] **36...Ra6?** [Black should try 36...dxe5→ ...e4 is the strong threat. 37.Be4 Rxc1 38.Rxc1 f5] **37.exd6 cxd6 38.Bd3 Rxa2 39.Bxb5 Re7** (Holding on to a one-pawn lead as best as I can.) **40.Rcd1 Rb2 41.Bc4 Rd7 [D]** (Next col.) (I stopped writing moves at this point because I fell into time pressure. The first four rounds of the tournament were 30 minutes with 10-second delay. It ended with me having three pawns and a Queen, and with her having two pawns and a Queen. I eventually traded the Queens off the board getting a favorable endgame where I promoted to another Queen and a Rook. I checkmated her.) **Result: 0-1** (Text cont. next col.)

Position after 41...Rd7 (From prev. col.)



Copy and paste the link below into your browser:

<http://view.chessbase.com/cbreader/2018/4/10/Game478377203.html>

Round: 2

White: Matt Martello (1928) (Pennsylvania)

Black: Evan Cortes (1854) (New Jersey)

Date: 3/31/2018

Time Control: Game 30 Minutes with 10 Second Delay

All commentary is by Matt (as edited) except for interjected italicized Fritz comments shown enclosed in brackets.

[B07: Pirc Defense: Miscellaneous Systems] (Before this game started, my opponent came 4 minutes late.

So once again, I was rewarded for being on time while my opponent was penalized for being late.) **1.e4 d6 2.d4 Nf6 3.Nc3 g6 4.Bg5** (Pirc Defense: Byrne Variation; I studied this opening variation a lot online. I felt good and very comfortable mentally at this point.) **4...Bg7 5.e5 Nfd7 6.Nd5** (6.f4 was better and Nd5 was the third best move after I reviewed this game. I thought that I memorized Nd5 as the best move, but I was slightly wrong. I was whipping out the opening the best that I could through memory and not waste time on trying to figure out the opening moves. My opponent took a lot of time on this move as this was a pressurizing move on my part) **6...f6 [D]** (Next. col.) (I had about 29 minutes left while he had about 18 minutes that this point. One of my strategies here was to keep on the time pressure.) **7.exf6 Nxf6 8.Bc4** (I wanted to set up a threat that if he castled (Text cont. next col.)

Position after 6...f6 (From prev.col.)



(Cont. from prev. col.) Kingside next move, I could discover check him, take a Rook, or some other big advantage.)

8...Nxd5 [8...c6= 9.Nxf6+ exf6 10.Qe2+ Kd7] **9.Bxd5 c6** [...Qa5+ is the strong threat.] **10.Bb3 Qa5+** (I guess he tried to get my Bishop with this double attack, but the Bishop can retreat and protect the King.) **11.Bd2! [D]**



(Cont. from prev.col.) [17.Qe2+ – is more deadly.] (I am having great development and protection while he is wasting tempi by moving his Queen) **11...Qb6** [11...Qf5= keeps the balance.] **12.c3** (Keeping development and protecting at the same time.) **12...d5 13.Nf3** (My target was the f7 square.) **13...Bg4** [13...O=O=] (Another wasted move. I just kicked the Bishop out with h3 next move. The computer shows I am ahead with a score of 1.23.) **14.h3 Bf5 15.O-O Qc7** (Here I am ahead on time with about 25 minutes left, while he had only about 12 minutes left. The computer shows I am winning with a 1.75 advantage.) **16.Re1 O-O 17.Ne5 [D]** (p.3) (I am owning the post at e5 with my Knight) **17...Nd7 18.Bf4** [Better is 18.Nf3±] (I am holding on to that powerful e5 post!) **18...Be4?** [18...Nxe5 19.Bxe5 Bxe5 20.Rxe5 Rf7] (I missed the tactic here, Rxe4. I was ahead on time. I focused more on putting pressure on him with position with my pawn push. (Text cont. p.3)

Position after 17.Ne5 (From p.2)



(Cont. from p.2) I was focusing on not losing time.) **19.Nxg6 Rxf4 20.Nxf4 Qxf4** (After this move exchange, my opponent was beating himself up psychologically. It seemed to me that my opponent was already beat psychologically at this point.) **21.Qg4 Qxg4 22.hxg4 [D]**



[Strongly threatening Rxe4.] (I am playing for a positional pawn storm at this point of the game.) **22...Kf8! 23.f3 Bg6 24. g5 [Better is 24.f4] 24...e5 25.dxe5 Bxe5 26.f4** (I keep pushing my opponent back. If he takes the pawn with the Bishop , the Bishop is gone.) **26...Bd6 27.g3 Nc5 28.Kh2 a5 [D]**



[28...Kg7+- Threatens to win with ...Rh8. 29.Bd1 Be4] **29.f5!** (I am continuing to squeeze him positionally.) **29...Bf7 30.Bc2 Nd7 31.g6?** [31.Kg2= and White is okay.] **31...hxg6 32.fxg6 [D]** (Next.col.) **32...Bg8! 33.Re2 Re8??** [33...Nf6+- 34.Kh3 Kg7] (Text cont. next col.)

Position after 32.fxg6 (From prev.col.)



(Cont. from prev. col.) (His biggest blunder of the game. He was in time pressure, and psychologically lost.) **34.Rf1+ Kg7 35.Rxe8 Ne5 [D]**



(I fell into time pressure at this point of game, and I stopped writing moves. In spite of this, I felt very comfortable and won the game with ease.) **Result 1-0**

Copy and paste the link below into your browser:

<http://view.chessbase.com/cbreader/2018/4/14/Game192493593.html>

Round: 3

White: L' Espinosa Garcia (1971) Florida

Black: Matt Martello (1929) Pennsylvania

Date: 3/31/2018

Time Control: Game 30 Minutes with 10 Second Delay

All commentary is by Matt (as edited) except for interjected italicized Fritz comments shown enclosed in brackets. [A06: Réti Opening:1 Nf3 d5]

1.Nf3 d5 2.e3 Nf6 3.b3 (He played a passive/delayed opening. I did not know how to continue here.) **3...Nc6 4.Bb2 e6 5.d4 [D]** (Next col.) **5...Bd6** (I believe this was a delayed Colle system.) **6.Bd3 Qe7** (Preventing Ba3.) (Text cont. next col.)

Position after 5.d4 (From prev.col.)



(Cont. from prev. col.) **7.Ne5 Nb4** (Attacking Bd3; My plan was to either trade off the Bishop or get that Bishop off the diagonal. I didn't know this variation during the game, but after I reviewed it with another strong chess player it was called Colle-Zukertort variation.) **8.Be2 Ne4** (Other strong d4-d5 system opponents that I played before told me about the advantage on Ne4. I wanted to make the best use of that. After reviewing the game with another player, I could have played 8...c5 instead.) **9.Nd2 f6 [D]**



(Big positional error! I should have castled or traded off Knights at d2. White took a lot of time on this move, after which he was down to 15 minutes on his clock. White has a computer advantage of 0.81) **10.Nxe4** (The best move for White after reviewing with computer.) **10...dxe4 11.Nc4 O-O 12.Nxd6 cxd6** (I couldn't avoid Bishop for Knight trade. I made it up with a unique middle board pawn structure.) **13.a3 Nc6 14.O-O d5** (My thinking was to block off the dark-squared Bishop at b2.) **15.c4 Rd8** (A better move is 15... Bd7.) **16.b4 Bd7 17.Qb3** (He is starting his Queenside attack against me.) (Text cont. p.4)

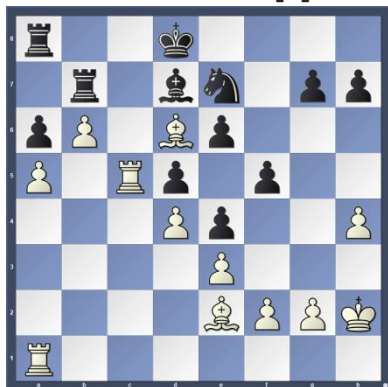
(Cont. from p.3) 17...Be8 18.c5 [D]



18...a6 19.Bc3 f5 I wasn't sure how to continue here. I was scared of the pawn trade at e5. White has a computer advantage of 1.00) 20.a4 Qc7 21.b5 Ne7 22.bxa6 bxa6 23.Qb6 [23.Rfb1 looks sharper. 23...Rdb8 24.Qa2 a5 25.h3 Nc6 26.Qd2] 23...Qxb6 24.cxb6 [Strongly threatening Rfb1.] 24...Rdb8 [D]



25.a5! (White has pretty big positional advantage now. The passed pawn on b6 is a thorn in my side. White has a computer advantage of 2.70) 25...Rb7 26.Bb4 Nc6 (Trying to hold the Queenside position at all costs.) 27.Bd6 Kf7 (Trying to get my King to the Queenside as soon as possible.) 28.Rfc1 Bd7 29.Rc5 Ke8 30.h4 (Now his plan is to go after my Kingside. White has a computer advantage of 3.43) 30...Kd8 31.Kh2 Ne7 [D]



[Better is 31...Ke8 32.Kg3 Kf7] 32.Rac1 (White taking control of the c-file by doubling his rooks.) 32...Nc8 (Text cont. next col.)

(Cont. from prev. col.) 33.Bc7+ Ke7 (My King was blocked off from the Queenside. White's computer advantage just got higher at 5.83) 34.Kg3 g6? [34...Nd6 35.Kf4 g6] 35.Kf4 [Better is 35.Bf4] 35...h6 [35...Nd6 keeps fighting. 36.Kg3 h6] (Trying all I can to stop him on Kingside.) 36.Be5 [D]



[Threatens to win with Rc7.] 36...Nxb6 (I felt this trade had to be done or he was going to promote to a Queen.) 37.axb6 Rxb6 38.Bg7 [Hoping for Rc7.] 38...Rb2 (At this point, we were both in time pressure. I was trying to use the passed pawn on the a-file to my advantage.) 39.R5c2 [Not 39.Bxh6 Rxe2 40.Rc7 Ke8±] 39...Rxc2 40.Rxc2 a5 41.Ke5 Ra7 42.Bf6+ [Better is 42.h5 Kf7 43.Bxh6] 42...Ke8 [42...Kf7 was called for. 43.Bd8 a4] 43.Kd6 [D]



[Better is 43.h5 Kf7 44.hxg6+ Kxg6 45.Rb2] (I was in time pressure at this point and stopped recording moves. I eventually lost in the endgame as he had a much better position.) 1-0

Copy and paste the link below into your browser:

<http://view.chessbase.com/cbreader/2018/4/22/Game877323234.html>

Round: 4

White: Matt Martello (1928) (Pennsylvania)

Black: Josh Dong (1808) (New York)

Date: 3/31/2018

Time Control: Game 30 Minutes with 10 Second Delay

All commentary is by Matt (as edited) except for interjected italicized Fritz comments shown enclosed in brackets.

[C42: Petroff Defense: 3 Nxe5 and unusual White 3rd moves] 1.e4 e5 2.Nf3 Nf6 (Petrov's Defense. I am not sure why he played it.)

3.Nxe5 d6 4.Nf3 Nxe4 5.d4 d5 6.Nc3 (Incorrect move on my part. I was trying to whip out the opening very quickly since I only had 30 minutes to make moves.) 6...Nxc3 7.bxc3 Bd6 [D]



8.Bd3 Bg4 (Trying to pin my Knight.) 9.h3 Bh5 (Keeping the pin on.) 10.O-O O-O [D]

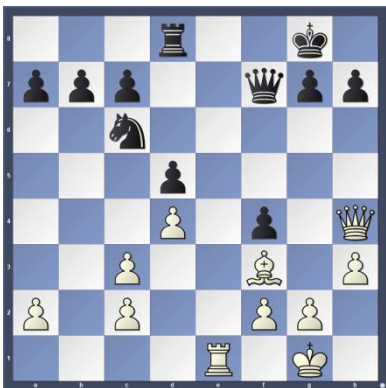


11.Re1 Nc6 12.Be2 [Better is 12.Rb1] (I decided to un-pin my Knight.) 12...Re8 13.Be3 [Black has an edge.] (I decided to continue development.) 13...f5 14.Qd2 (Keep continuing development.) 14...Qf6 15.Bg5 (I wanted to get some pressure on his Queen.) 15...Qf7 16.Bf4 [16.Ne5!? Nxe5 17.Bxh5=] 16...Bxf4 17.Qxf4 Re4 (Text cont. p.5)

(Cont. from p.4) (On these next two moves from Black, he took a very long time on this move as well as the next move. His time went under eight minutes.) **18.Qg3[D]**

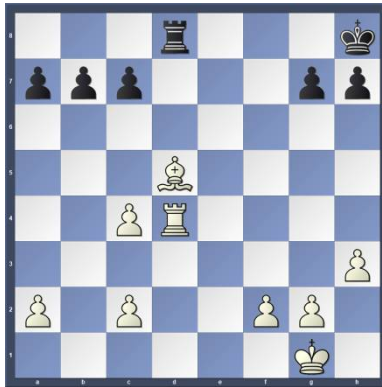


[Strongly threatening Ng5.] **18... f4** (He took a very long time on this move as well and went under eight minutes of clock remaining. Basically extreme time pressure.) **19.Qh4!** [Aiming for Ng5.] **Bxf3** (A very favorable trade for me. Black made this move because of his time pressure. White has a computer advantage of 1.18.) **20.Bxf3 Rxe1+ 21.Rxe1 Rd8? [D]**



[Better is 21...h6!] **22.c4!** (I am putting pressure on him, having many threats against him.) **22...Qf8 [22...dxc4 23.Bxc6] 23.Bxd5+** (Black is starting to crack. He lost a pawn here, still under extreme time pressure. White has a computer advantage of 3.32.) **23...Kh8 24.Re4 Qd6 25.Qxf4 Qxf4** (My plan, with a two pawn lead, was to simplify the game and get the Queens off the board.) **26.Rxf4 Nxd4 27.Rxd4 [D]** (Next col.) **27...c6** (I saw that discovery attack threat, but I didn't care. It was just an equal trade of pawn, Bishop and Knight. Basically a four point for a four point even trade off.) **28.Rd3 cxd5 29.cxd5** (Getting my isolated pawn created.) **29...Kg8 30.f4 Kf7 31.Kf2 h5 [31...Rc8 was called for. 32.Kf3 Ke7] (Text cont. next col.)**

(Position after 27.Rxd4) (From prev. col.)

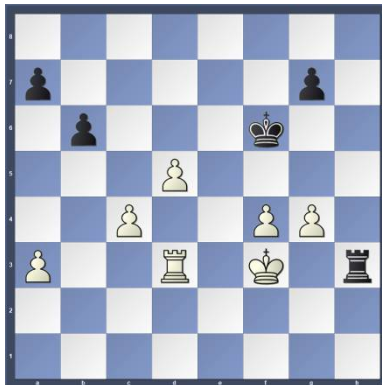


(Cont. from prev. col.) **32.c4 b6** (At this point, I am making sure that I get a favorable endgame for myself.)

33.Ke2 Kf6 34.g4 hxg4

35.hxg4 Rh8 36.a3 (I am making sure that all of my pieces are being protected, making sure that Black can't do any counter-play against me.)

36...Rh2+ 37.Kf3 Rh3+ [D]

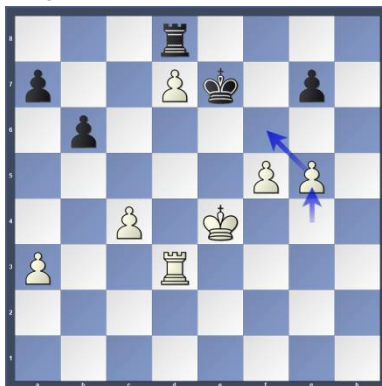


[37...Rh1 38.f5 Ke7 39.Re3+ Kf8]

38.Ke4 [White is clearly winning.]

38...Rh8 39.d6 (Continuing the Queen promoting threat.) **39...Rd8**

40.d7 Ke6 (His Rook and King are now focused on the d7 pawn.) **41.f5+ Ke7 42.g5 [D]**



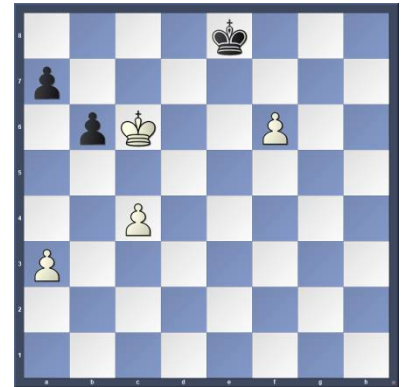
42...Rxd7 43.Rxd7+ Kxd7 (He is making the endgame easier for me.)

44.Ke5 Ke7 45.Kd5 Kd7 46.f6 gxf6

(I just created another isolated pawn, at this point Black has to "pick his poison.") **47.gxf6 Ke8 48.Kc6 [D]**

(Next col.) (Text cont. next col.)

(Position after 48.Kc6) (From prev. col.)



(Cont. from prev. col.) [Better is 48.Ke6 Kf8 49.f7 a5 50.a4 b5 51.cxb5 Kg7 52.b6 Kh6 53.b7] **Black Resigns 1-0**

Copy and paste the link below into your browser:

<http://view.chessbase.com/cbreader/2018/4/24/Game986925750.html>

Round: 5

White: Jack Grill (1887) Connecticut

Black: Matt Martello (1928)

Date: 3/31/2018 (Five games played in one day!)

First Time Control: 40 Moves in 120 Minutes with a 10 Second Delay.

Second Time Control: Sudden Death 30 Minutes with 10 Second Delay

All commentary is by Matt (as edited) except for interjected italicized Fritz comments shown enclosed in brackets.

(Before this round, I had to make the mental adjustment of playing a longer time control game than I was in the first 4 rounds. I

thought that I made a good adjustment. This game as well as the Round 6, and Round 7 games, I felt like I was playing in "slow motion" after playing the first four rounds with only 30 minutes of clock.) [C92: Closed Ruy Lopez:

9...Be6, Karpov and Flohr-Zaitsev Variations] **1.e4 e5 2.Nf3 Nc6**

3.Bb5 a6 (Ruy Lopez System)

4.Ba4 Nf6 5.O-O Be7 6.Re1 b5

7.Bb3 d6 8.h3 (Incorrect positional move on White's Part) (Text cont. p.6)

(Cont. from p.5) **8...Na5 [D]**



(Now I took advantage of White's positional move error by playing this move and eventually taking away White's bishop pair) **9.c3 Nxb3** (White's bishop pair is gone. Black has a slight positional advantage because White lost his bishop pair) **10.Qxb3 O-O 11.d4 exd4 12.cxd4 Bb7** (Get more pieces developed) **13. Qd3 h6 [D]**



(I'm stopping the threat of White pinning my knight with his bishop) **14.Bf4 Re8 15.Nbd2 Bf8 16.a4 Qd7 [D]**

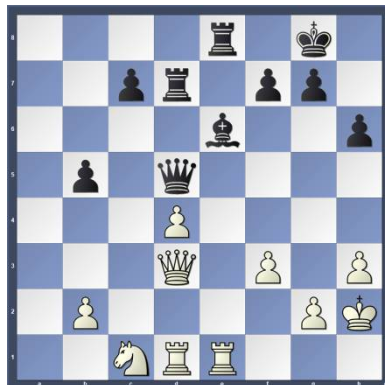


(I ignored taking the a4 pawn, and just continued development.) **7.axb5 axb5 18.e5 dxe5 [18...Nd5 19.Bg3 Rxa1 20.Rxa1 Ra8 21.Rxa8 Bxa8] 9.Nxe5 Qd5** (A good positional move threatening checkmate.) **[D]** (Next col.)
(Text cont. next col.)

(Position after 9...Qd5) (From prev. col.)



(Cont. from prev. col.) **20.f3?** [White should play 20.Nef3] (I have weakened White's defense. Black has a computer advantage of -1.94.) **20...Rad8?** (After reviewing the game, I should have traded Rooks at a1, but instead I was playing more positional and I decided to centralize my a-Rook. Black now lessens his computer advantage to -1.07.) **21.Nb3 Bd6** Better is 21...Nh5 22.Bh2 c5] (I'm continuing to develop, centralize, and create potential threats) **22.Bh2 Bc8 [22...c5 White must now prevent ...c4. 23.Na5 Ba8]** (Should have played c5 here, but because of all of the activity on White's side, I was a little worried about a strong counterattack by White) **23.Rad1 Be6** (I kept playing position and keep having pressure against White) **24.Nc1 Nd7** (I threaten to break his center defense here) **25.Nxd7 [And now Ne5 would win.]** (His center defense was broken here.) **25...Bxh2+ 26 Kxh2 Rxd7 [D]**



(Playing a little chess "small ball," doubling up my Queen and Rook on the d-file.) **27. Re5 Qd6** (Text cont. next col.)

(Cont. from prev. col.) **28.Kg1 c6 29.Ne2 f6** (Taking away the e5 square for his Rook, my opponent was very resilient this game.) **30.Re3 Red8** (I am controlling the d-file.) **31.Qe4 Bf7 [D]**



32.Rc1 Re8 (At this point, it was a very intense middle game. I was putting threats on him and he was putting threats on me. We were both defending each other's attacks rather well.) **33.Qd3 Rc8 34.b3 Ra8 [D]**

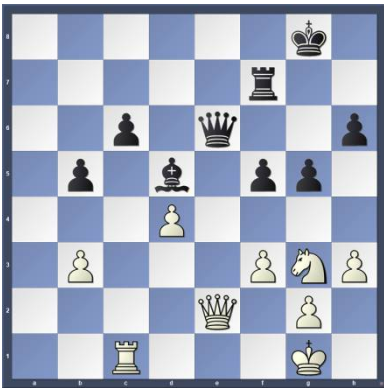


(My initial plan was to control the a-file since it was wide open.) **35.Qe4 Rc8** (I don't want to repeat "potential drawing moves" at this point of the game since I knew that I still had a good positional advantage against him.) **36.Rec3 [D]**

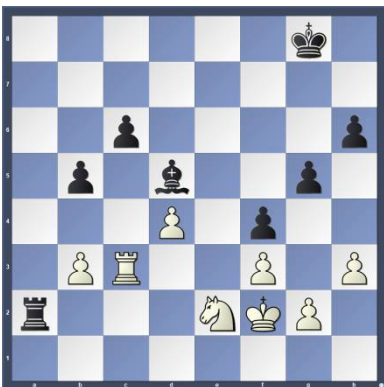


36...Bd5 (I am starting to lock up the Queenside now.) (Text cont. p.7)

(Cont. from p.6) **37.Qf4 Qe6**
38.Re3 Qf7 39.Rec3 [39.Nc3= keeps the balance.] **39...Re8** [Better is 39...b4 40.R3c2 Re8] **40.Re3** [White should try 40.Ng3] **40...g5** (I felt this was a very strong move at this point of the game, pushing Black back somewhat.)
41.Rxe8+ Qxe8 42.Qd2 Qe6
43.Qc2 f5 [Black has some pressure.] (Keep advancing my forces.)
44.Ng3 Rf7 (Protect the very powerful f-pawn) **45.Qe2 [D]**

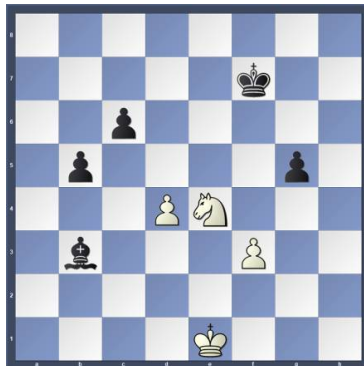


45...Qxe2! [But not 45...Bxb3?! 46.Qxe6 Bxe6 47.Rxc6] **46.Nxe2 f4** (I'm glad that he traded the Queen's off. This is what I wanted him to do. I have to advance my f-pawn into an even stronger position, establishing a very strong pawn chain on the kingside.)
47.Kf2 Ra7 (Now by controlling that wide-open a-file, Black now has a computer advantage of -0.93.)
48.Rc3? [48.Rc2 is a better defense.]
48...Ra2 [D]

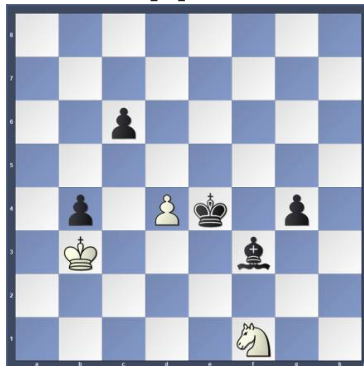


(My plan here was to control the 2nd rank with my Rook. In doing so I pinned his Knight.) **49.Ke1 Rb2** (The pawn on b3 is trapped and eventually will be lost. Black has a computer advantage of -2.56.) **50.h4 Kf7** [50...Rxb3? 51.hxg5 hxg5 52.Rxb3-+; Not 50...Bxb3 51.hxg5 hxg5 52.Rc5] (Text cont. next col.)

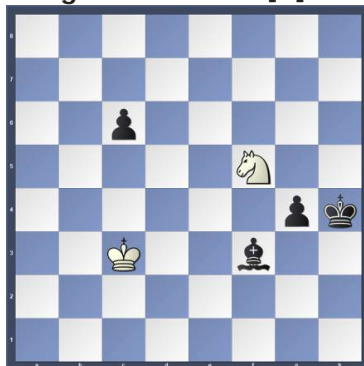
(Cont. from prev. col.) (I am putting my King into a good end-game position, I don't need to take the b3 pawn right away) **51.hxg5 hxg5 52.g3 fxg3**
53.Nxg3 Rxb3 (Now I take the b3 pawn!!!) **54.Rxb3 Bxb3 55 Ne4 [D]**



55...Kg6 (Making sure that all of my pieces are defended at this point.) **56.Ke2 Bd5** [Threatens to win with ...Bxe4.] **57.Nd2?? Kf5**
58.Ke3 b4 (I started to threaten to promote to a Queen now.)
59.Kd3 Kf4 60.Kc2 Bxf3 (White lost another pawn, Black is taking huge of the game at this point)
61.Kb3 g4 (Threatening a Queen promotion on g-file now)
62.Nf1 Ke4 [D]

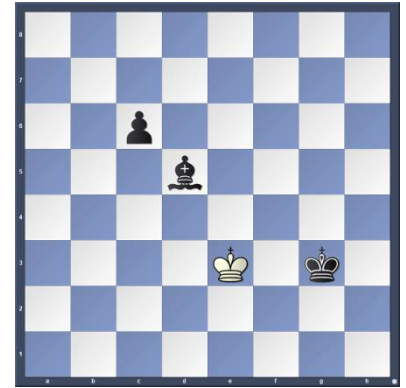


[Better is 62...Be2 63.Ng3 Kxg3] **63.Kxb4 Kxd4 64.Ng3 Ke3**
65.Kc3 Kf4 66.Nh5+ Kg5
67.Ng3 Kh4 68.Nf5+ [D]



(Text cont. next col.)

(Cont. from prev. col.) **68...Kh3**
69.Kd4 g3 70.Nxg3 Kxg3 71.Ke3 Bd5 [D]



[Accuracy: White = 21%, Black = 26%]
White Resigns 0-1 (This was a very challenging 5th round game. Even though I had a positional advantage right from the beginning of the game, I didn't actually get a material advantage until move 53. My opponent played extremely well despite losing the bishop pair from the beginning of the game.)

Copy and paste the link below into your browser:

<http://view.chessbase.com/cbreader/2018/4/24/Game1045121078.html>

There is not sufficient space to include the Round 6 Game in this issue. The Round 6 and 7 Games will be in the next issue. The remainder of space will be filled in by a game from the NPCC April 2018 Quads.

Game from the NPCC 2018

April Quads Tournament:

Round: 1

Submitted by Steve from score sheet with selected Fritz comments [shown thusly].

White: James Eisert (707)

Black: Steve Atlee (1058)

Date: 4/6/2018

[A48: 1 d4 Nf6 2 Nf3 g6: Torre, London and Colle Systems] **1.d4 Nf6 2.Bf4 g6**

3.Nf3 Bg7 4.e3 0-0 5.Bd3 d6

6.Nbd2 Nbd7 [D] (p.8) 7.Qe2 c5

8.dxc5 Nxc5 9.Bc4 Nh5 10.Bg5

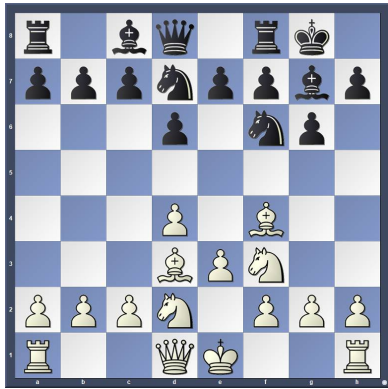
[Better is 10.c3] **10...Bxb2 11.Rb1**

Bc3 12.0-0 Ne6 [12...d5 ...Bxd2 is the strong threat. 13.Rfd1 Be6] 13.Bh6 Bg7

14.Bxg7 Nhxg7 15.Ne4 d5 [Black should play 15...Rb8] 16.Nfd2? [D]

(p.8) (Text cont. p.8)

Position after 6...Nbd7 (From p 7)



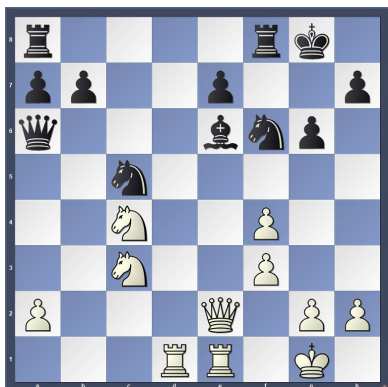
Position after 16.Nfd2? (From p 7)



(Cont. from p.7) [16.Rbd1= and White stays safe.] 16...dxc4 17.Nxc4 Qd5 18.Ncd2 f5 [D]

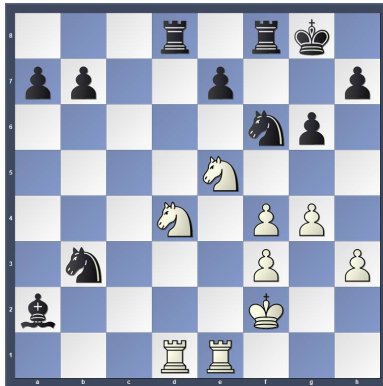


19.c4 Qc6 20.Ng3 f4 21.Nge4 Nh5 22.f3 Nf6 23.Rbd1 Qb6 24.c5 Nxc5 25.Nc4 Qb5 26.Nc3 Qa6 27.exf4 Be6 28.Rfe1? [D]

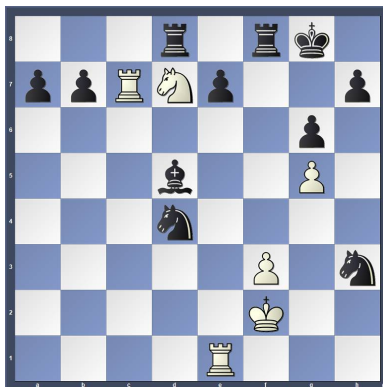


28...Rf7? [28...Bxc4 29.Qd2 Nd3] (Text cont. next col.)

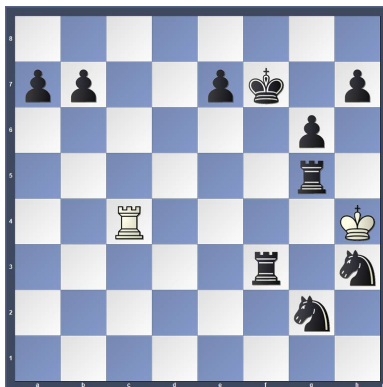
(Cont. from p.7) 29.Ne5 Qxe2 30.Nxe2 Rff8 31.Nd4 Bxa2 32.h3 Rad8 33.g4 Nb3 34.Kf2 [D]



[Better is 34.Nb5 Nd2 35.Ra1] 34...Nxd4 35.g5 Nh5 36.Rc1 Nxf4 37.Rc7 Bd5 38.Nd7 Nxf3+ [D]



39.Kg3 Rxf3+ 40.Kh4 Nf5+ [Black mates.] 41.Kg4 Ne3+ 42.Kh4 Ng2+ 43.Kg4 Nxe1 44.Nf6+ Kf7 45.Nxd5 Rxd5 46.Rc4 Rxf5+ 47.Kh4 Ng2# [D]



Accuracy: White = 21%, Black = 33%.] 0-1

Copy and paste the link below into your browser for a complete analysis with nothing edited out:

<http://view.chessbase.com/cbreader/2018/5/2/Game141648375.html>

Other places to play chess:

The below are for friendly off hand non-rated games (clocks optional). Bring chess set.

Monday evenings:

About 6:00 to 9:00 PM, "Starbucks," 10 North Main Street, and / or "Nonno's Italian Coffee Parlor," 6 E. State St., Doylestown

Tuesday mornings :

9:30 AM to Noon at the Pennridge Community Senior Center in Silverdale. Located on route 113 near route 152

Wednesday evenings :

7:30 to 10:00 PM, "Christ Reformed Church at Indian Creek" located at 171 Church Road (intersection with Cowpath Road), Telford. (Temporarily closed during Lenten Season)

Weekdays:

8:00 to 4:00 Daily, Senior Center, 312 Alumni Ave, Harleysville.

Friday Mornings:

10:00 AM up to 2:00 PM Indian Valley Public Library, 100 E. Church Ave, Telford.

Allentown Center City Chess Club

Offer (from Eric C. Johnson): "For any of our events -- If three or more Lansdale players carpool together -- the designated driver plays for free!"

<http://www.freewebs.com/allentowncentercitychessclub>

This concludes this issue. More games in next issue.