

~ En Passant ~

Newsletter of the North Penn Chess Club of Lansdale, PA - Winter 2014, Part 1

E. Olin Mastin, Editor

North Penn Chess Club
500 West Main Street
Lansdale, PA 19446

www.northpennchessclub.org

(215) 699-8418 donfunk@msn.com

This issue contains games played in November – December 2013 and from the current 2014 NPCC Winter Robin. Thanks to all for submitting games!

However, I am beginning the issue with Matt Martello's "\$900 game" played in the last round at the 2013 National Chess Congress Tournament (Philadelphia, Nov. 28, 2013):

Submitted by Mat t with his comments, selected Fritz [Fritz 11 SE (120m)] comments [shown thusly], and a few by me.

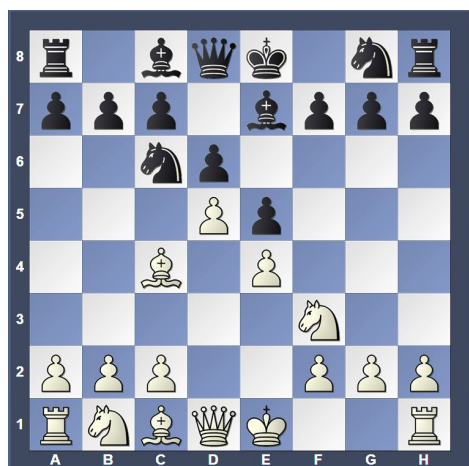
White: Matt Martello (1779)

Black: Spencer Carren (1758)

Date: 11/28/2013

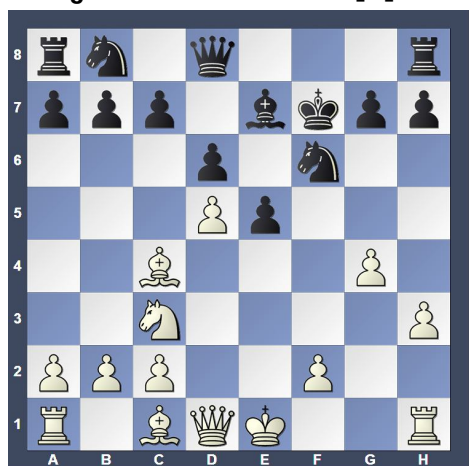
[C50: Hungarian Defense and Giuoco Pianissimo]

1.e4 e5 2.Nf3 Nc6 3.Bc4 Be7 4.d4 d6 5.d5 [D]



5...Nb8 6.h3

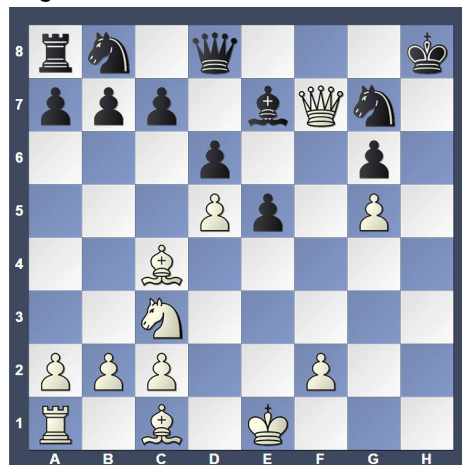
f5 7.exf5 Bxf5 8.Nc3 Nf6 9.g4 Bg6 [9...Bc8!?]
10.Ng5 Bf7 11.Nxf7 Kxf7 [D]



(Cont. next

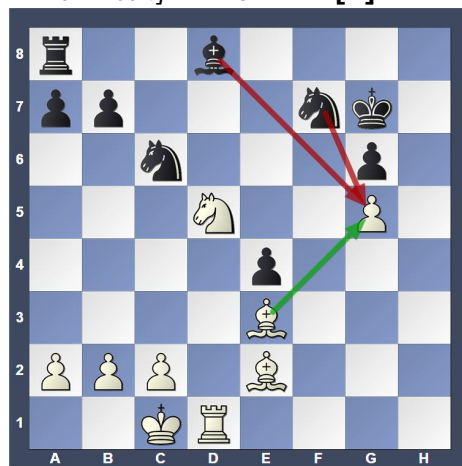
col.)

(Cont. from prev. col.) 12.g5 Ne8 [12...Nfd7+-]
13.Qf3+ Kg8 14.h4 g6 15.h5 Ng7 16.hxg6
hxg6 17.Rxh8+ Kxh8 18.Qf7 [D]



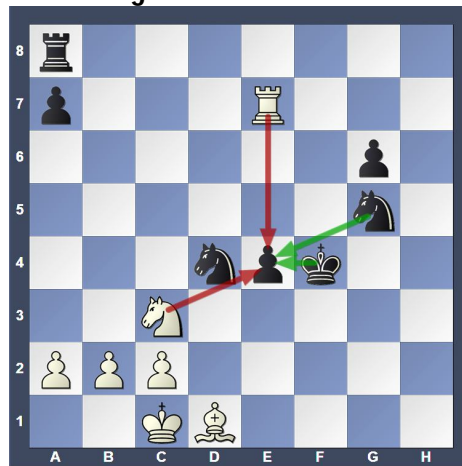
[18.Bd3 Qe8

19.Be3] 18...Qe8 19.Qxe8+ Nxe8 20.f4 c6
21.fxe5 dxe5 22.dxc6 Nxc6 23.Bd3 Kg7
24.Nd5 Bd8 25.Be3 Nd6 26.O-O-O e4 [26...Nf5!?]
27.Bd2 Ncd4] 27.Be2 Nf7 [D]



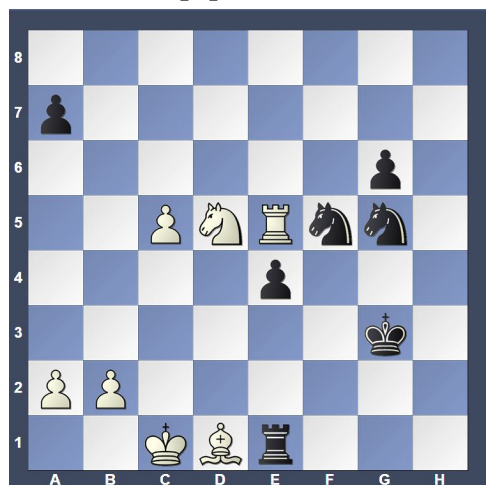
[Exerts

pressure on the isolated pawn.] 28.Nc3 [28.Rg1!?]
28...Bxg5 29.Bxg5 Nxg5 30.Rd7+ Kf6 31.Rxb7
Nd4 32.Bg4 Ke5 33.Re7+ Kf4 34.Bd1 [D]



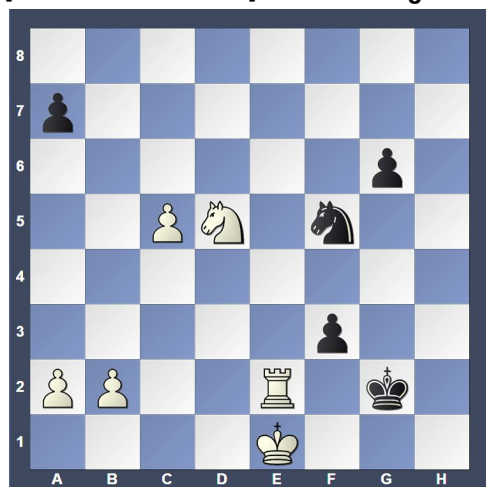
(Cont. p.2)

(Cont. from p.1) [Attacking the isolated pawn on e4]
34...Nf5 35.Nd5+ Kg3 36.Re5 Rh8 37.c4 Rh1
38.c5 Re1?? [D]



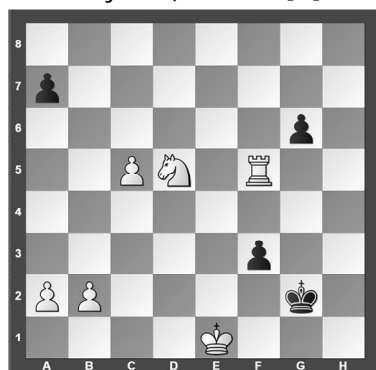
[38...Nh3

39.Nc3 (39.Rxe4 Nf2 40.Nc3 Rxd1 41.Nxd1 Nxe4)
 39...Ne3 40.c6 (40.Rxe4 Nxd1 41.Kc2 Nxc3 42.Kxc3 Nf4;
 40.Nxe4+?? the pawn must remain untouched 40...Kf4
 41.Nc3 Kxe5-+)] **39.Kd2??** [39.c6 Nf7 40.Re6]
39...Nf3+?? [39...Rh1 40.Re8 Nd4] **40.Bxf3 exf3**
 [40...Nd4 41.Bd1 Kf2] **41.Kxe1 Kg2 42.Re2+? [D]**



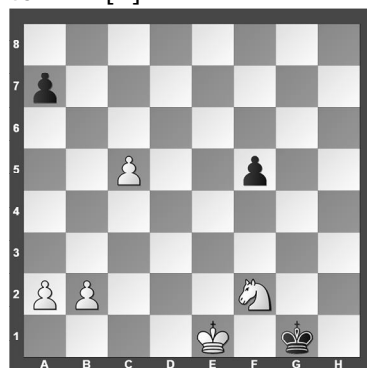
(Matt wrote:

"Note: At move 42, I (white) should have played Rxf5
 instead of Re2+. When I played Re2+, I lost my chance
 to win and the game then became a drawing position.
 This one move had me win \$950 instead of \$2000. The
 move for Move 42 for white is a \$2000 winning move.
 Can someone find why that is? I think that this would
 be a good chess puzzle." Touché!) [(Some possible
 moves by Olin) 42.Rxf5 [D]



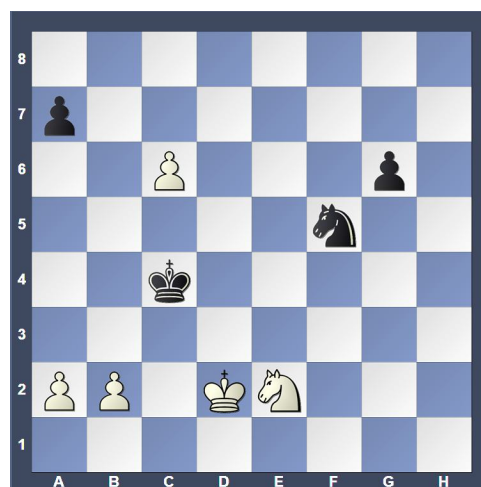
(Text cont. next col.)

(From prev. col.) 42...gxf5 43.Nf4+ Kg1 44.Nd3 f2+
 45.Nxf2 [D]

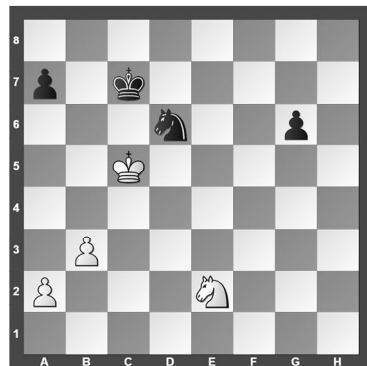


Perhaps the readers

can find some other variations to see how Matt
 could have won \$2000 instead of a "mere \$950"!]
42...fxe2 43.Nf4+ [43.Kxe2 Kh3 44.Kd3] **43...Kf3**
44.Nxe2 Ke4 45.c6 Kd5 46.Kd2 [46.c7 Nd6]
46...Kc4 [D]



[46...Kxc6!? deserves consideration 47.Kd3 Nd6=]
½-½ (End of actual game. Draw agreed) (Olin -
 - I made a few more moves only to show that the
 game was indeed a draw!: 47.c7 Nd6 48.b3+ Kc5
 49.Kc3 Kc6 50.Kd4 Kxc7 51.Kc5 [D])



Game from the NPCC 2013 November

Octo: Round 1, submitted by Olin with my
 comments and selected Fritz comments
 [shown thusly].

White: Bob Kampia (1792)

Black: Olin Mastin (1522)

Date: 11/8/2013

(Cont. p.3)

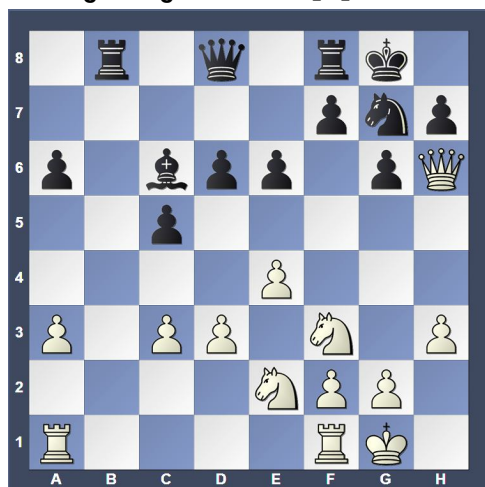
(Cont. from p.2) [B50: Sicilian: 2...d6] 1.e4 c5 2.Nf3 d6 3.Nc3 Nc6 4.h3 e6 5.Bb5 Bd7 6.O-O g6 [6...Nf6 7.d4 cxd4 8.Nxd4] 7.Ne2 [7.d4!? cxd4 8.Nxd4] 7...Bg7 [D]



8.c3 Nf6 9.d3 O-O 10.Bf4 Ne8 [10...Ne5 11.Bxe5 Bxb5 12.Bf4] 11.Qd2 a6 12.Ba4 b5 13.Bc2 b4 14.Ba4 [14.d4 bxc3 15.bxc3 e5] 14...Qa5 [D]

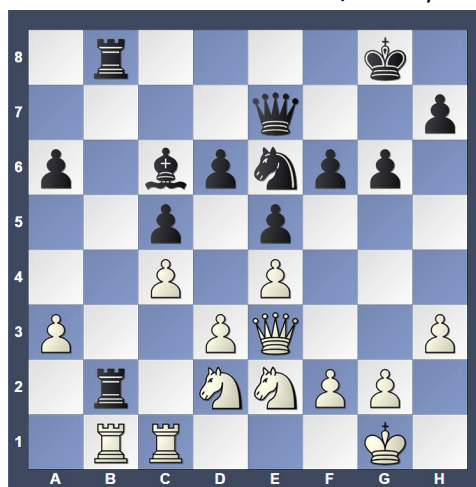


15.Bxc6 Bxc6 16.a3 bxc3 17.bxc3 Qd8 18.Bh6 Rb8 19.Bxg7 Nxg7 20.Qh6 [D]

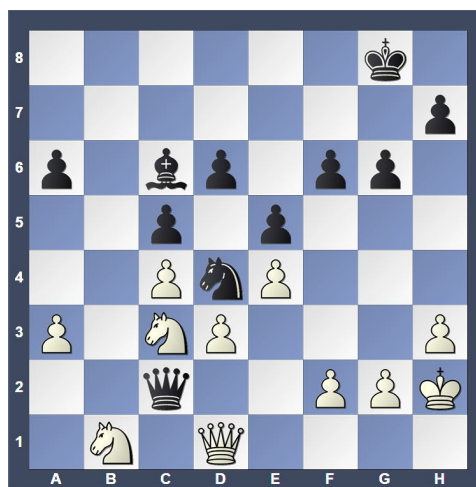


20...f6 21.Qe3 Qe7 22.c4 e5 23.Nd2 Ne6 24.Rfc1 Rb2 25.Rab1 Rfb8 [D] (Next col.)

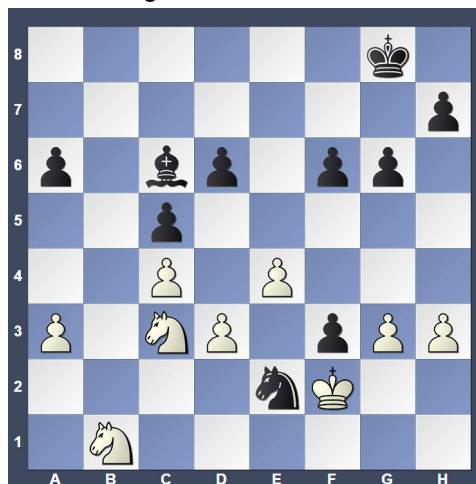
Position after 25...Rfb8 (From prev. col.)



26.Rxb2 Rxb2 27.Rb1 Rxb1+ 28.Nxb1 Qb7 29.Qc1 Qb3 30.Nec3 Nd4 31.Kh2 Qc2 32.Qd1? [D]

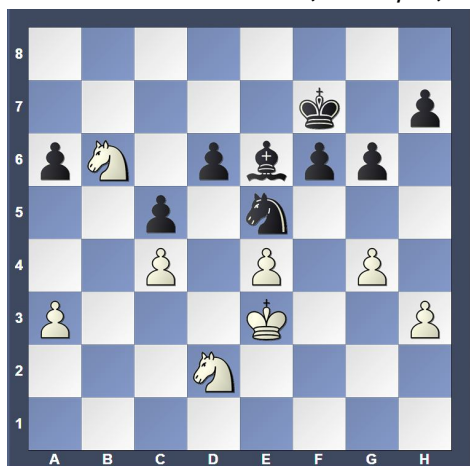


[32.Qd2] 32...Qxf2 33.Qg4 Qf4+ [33...Kg7!? 34.Qg3 Qf1 35.Qe3] 34.Qxf4 exf4 35.Kg1 f3 [35...Kf7!? 36.Kf2] 36.g3 Ne2+ [36...Kf7 37.Kf2] 37.Kf2 [D]

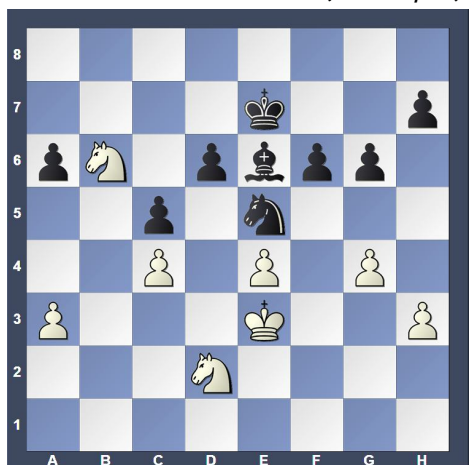


[37.Nxe2!? fxe2 38.Kf2=] 37...Nc1 38.Kxf3 [38.Ke3!?] 38...Nxd3 39.Ke3 Ne5 40.Nd2 Bd7 41.g4 Kf7 42.Nd5 Be6 43.Nb6 [D] (p.4) 43...Ke7 [43...Nd7 44.Nc8; 43...f5 44.gxf5 gxf5 45.exf5 Bxf5 46.h4 Ng4+ 47.Kf4 Ke6 48.Nf1 (48.a4 Ne5 49.Ke3 Bc2) 48...Ne5 49.Ng3 Bd3] 44.Nd5+ Kf7 [Twofold repetition] 45.Nb6 Ke7 [D] (p.4)

Position after 43.Nb6 (From p.3)



Position after 45...Ke7 (From p.3)



(Cont. from p.3) (Olin -- At this point, Bob asked me if I were playing for a draw, which I took as a draw offer. Draw agreed.) ½-½

Game from the NPCC 2013 Joseph J. Kennedy Memorial Tournament:

Round 2, Submitted by Olin with my comments and selected Fritz comments [shown thusly].

White: Will Moyer (1557)

Black: Olin Mastin (1536)

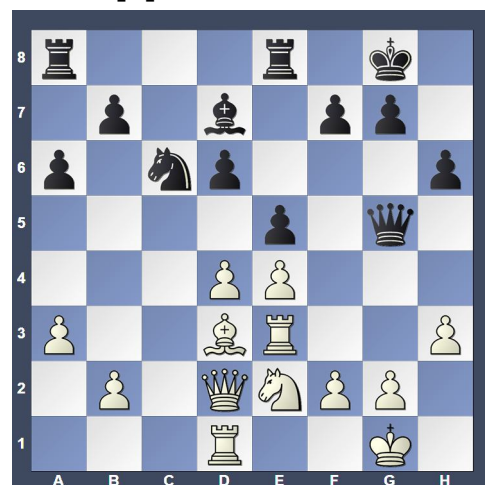
Date: 12/13/2013

[B51: Sicilian: Moscow Variation (3 Bb5+) without 3...Bd7] 1.e4 c5 2.Nf3 Nc6 3.c3 d6 4.Bb5 Bd7 5.O-O e6 6.Re1 Nf6 7.d4 cxd4 8.cxd4 Be7 9.Nc3 O-O [D]

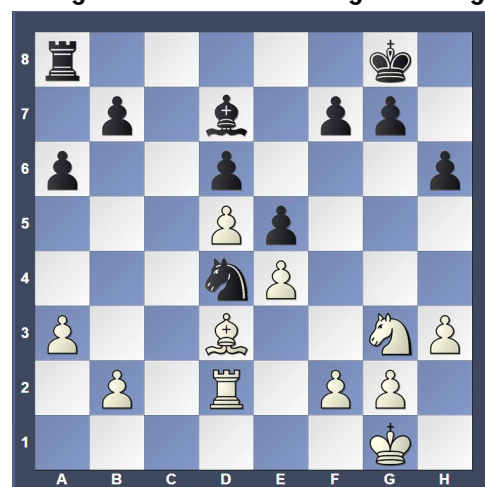


(Text cont. next col.)

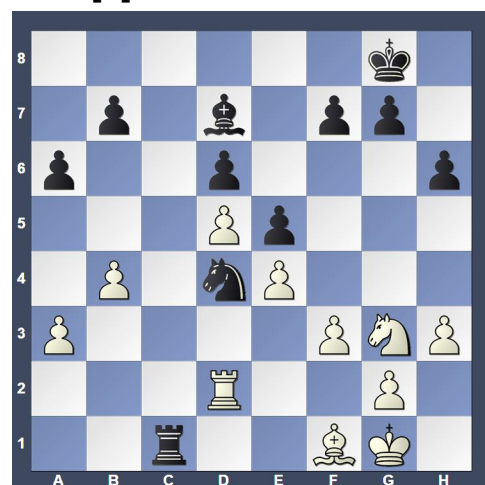
(Cont. from prev. col.) 10.a3 Re8 11.Be3 a6 12.Bd3 h6 13.Qd2 Ng4 14.h3 Nxe3 15.Rxe3 Bg5 [15...Na5!? 16.Rb1 Rc8] 16.Nxg5 Qxg5 17.Ne2 e5 18.Rd1 [D]



[18.f4 exf4 19.Rf3=] 18...Re6?? [18...exd4!? 19.Rg3 Qxd2 20.Rxd2 Rac8] 19.d5?? [19.h4 Qxh4 20.d5] 19...Rg6 20.Rg3 Qxd2 21.Rxd2 Rxg3 22.Nxg3 Nd4 [D]

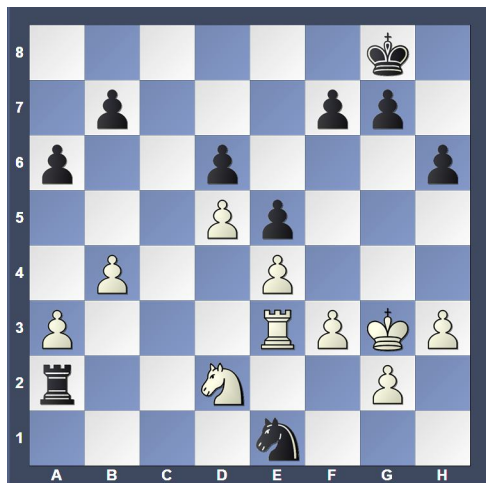


[The black knight is well posted.] 23.b4 [23.Ne2 Nb3 24.Rc2 Nc5=] 23...Rc8 [23...Bxh3 24.Ne2 Nxe2+ 25.Rxe2] 24.Bf1 [24.Ne2!? should not be overlooked] 24...Rc1 25.f3 [D]



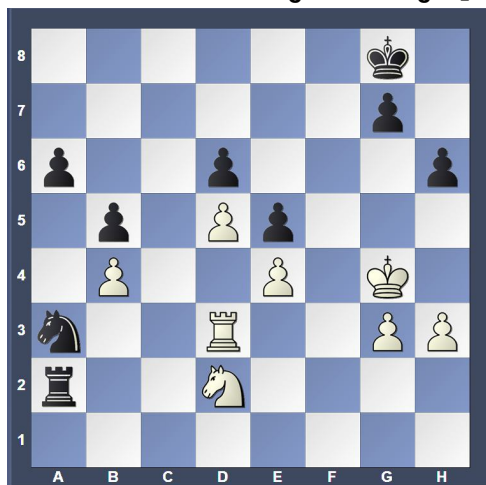
25...Bb5 [25...Bxh3!? 26.Kf2 Bd7] 26.Kf2 Bxf1 27.Nxf1 Ra1 28.Rd3 Ra2+ 29.Nd2 Nc2 30.Kg3 Ne1 31.Re3 [D] (p.5)

Position after 31.Re3 (From p.4)



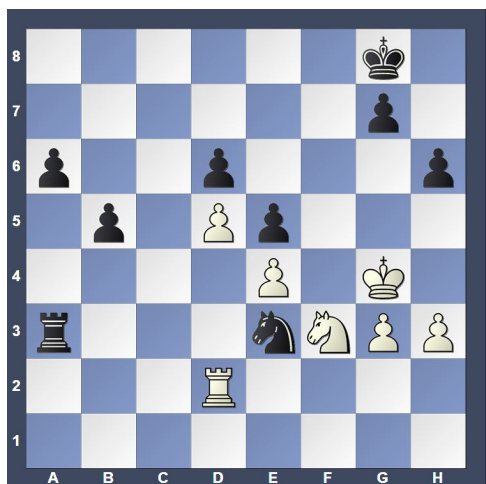
31...Nc2

[31...Rxd2?! 32.Rxe1 Rc2 33.a4] 32.Rd3 Nxa3 33.f4 f6 34.fxe5 fxe5 35.Kg4 b5 36.g3 [D]



[36.Rc3 Nc2

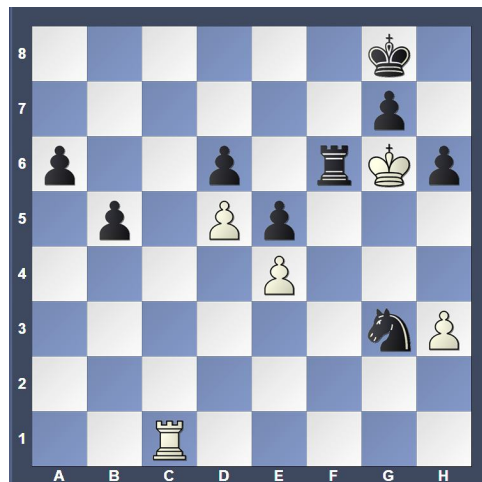
(36...Rxd2?! 37.Rxa3 Rxc2+ 38.Kf3) 37.Nf3 g6] 36...Nc2 37.Nf3 [37.Rc3 Nxb4 38.Nf1] 37...Nxb4 38.Rd1 [38.Rc3 doesn't improve anything 38...Rc2 39.Rb3 Rc4] 38...Nc2 39.Rd3 [39.Rc1 does not solve anything 39...Ne3+ 40.Kh5 Kh7] 39...Ra3 40.Rd2 [40.Rxa3 cannot change destiny 40...Nxa3 41.Nd2 Nc4] 40...Ne3+ [D]



41.Kh5

[41.Kh4 what else? 41...Nc4 42.Rf2] 41...Nf1 42.Rd1 Nxc3+ 43.Kg6 [43.Kg4 a last effort to resist the inevitable 43...Nxe4 44.Re1 Nf6+ 45.Kf5 Rxf3+ 46.Ke6 Rxh3 47.Kxd6] (Text cont. next col.)

(Cont. from prev. col.) 43...Rxf3 44.Rc1 [44.Rf1 is not the saving move 44...Rxf1 45.h4 Rf6#] 44...Rf6# [D]



0-1

Games from the NPCC 2014 Winter

Robin Tournament:

Round: 1

Submitted by Harry with Fritz comments [shown thusly].

White: Harry Hartman (807)

Black: John Russo (1290)

Date: 1/30/2014

[B23: Closed Sicilian: Lines without g3] 1.e4 c5 2.Nc3 Nc6 3.f4 g6 4.Nf3 Bg7 5.Bc4 e6 6.O-O Nge7 7.h3 O-O 8.d3 f5 [D]



[8...d5

9.Bb3] 9.Re1 fxe4 10.Nxe4?? [Throwing away the advantage. 10.dxe4 is just about the only chance 10...Na5 11.Qe2=] 10...d5 [D] (p.6) 11.Bb5 dxe4 12.dxe4 [D] (p.6) 12...Qxd1 [12...Qb6!? and Black can already relax 13.a4] 13.Rxd1 a6 14.Bc4 b5 15.Be2 Bb7 [15...Nd4!? makes it even easier for Black 16.Nxd4 cxd4 17.a4] 16.c3 c4 17.Rd7 Ra7?? [D] (p.6) [Black is ruining his position. 17...Bc8 Black had this great chance 18.Rc7 Rb8] 18.Be3 Bc8 19.Bxa7?? [19.Rxa7 the rescuing straw 19...Nxa7 20.Bxa7 Rxf4 21.Nd2] (Text cont. on p.6)

Position after 10...d5 (From p.5)



Position after 12.dxe4 (From p.5)

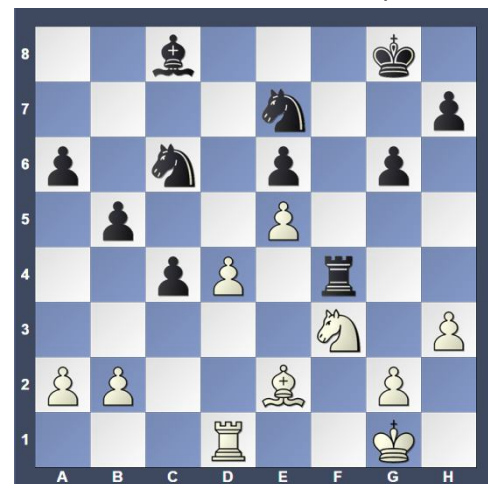


Position after 17...Ra7?? (From p.5)

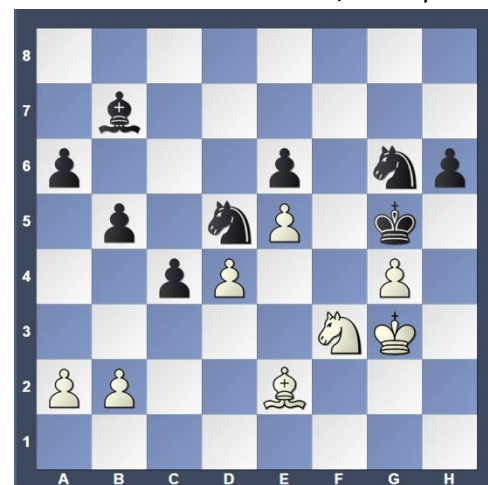


(Cont. from p.5) 19...Bxd7 20.Rd1 Bc8 21.Bd4? [21.Be3] 21...Bxd4+ 22.cxd4 Rxf4 23.e5 [D] (Next col.) 23...Nd5 24.g3 Rf8 25.Rf1 h6 26.Nh4 Rxf1+ 27.Bxf1 Kg7 28.Nf3 Nce7 29.g4 Bb7 30.Kf2 g5 31.h4 Kg6 32.Be2 gxh4 33.Nxh4+ Kg5 34.Kg3 Ng6 35.Nf3# [D] (Next col.)

Position after 23.e5 (From prev. col.)



Position after 35.Nf3# (From prev. col.)



1-0

Continued in *En Passant Winter 2014, Part 2.*

www.northpennchessclub.org

Other places to play chess:

The below are for friendly off hand non-rated games (clocks optional). Bring chess set.

Monday evenings about 6:00 to 10:00 PM, "Starbucks", 10 North Main Street, Doylestown

Tuesday mornings 9:30 AM to Noon at the Pennridge Community Senior Center in Silverdale. Located on route 113 near route 152

Wednesday evenings 7:30 to 10:00 PM, "Christ Reformed Church at Indian Creek" located at 171 Church Road (intersection with Cowpath Road), Telford, PA.

Allentown Center City Chess Club Offer

(from Eric C. Johnson): "For any of our events -- if three or more Lansdale players carpool together -- the driver plays for free!"