

# ~ En Passant ~

## Newsletter of the North Penn Chess Club, Lansdale, PA – Summer 2017, Part 4

E. Olin Mastin, Editor

**North Penn Chess Club**

**500 West Main Street**

**Lansdale, PA 19446**

[www.northpennchessclub.org](http://www.northpennchessclub.org)

(215) 699-8418 [donfunk@msn.com](mailto:donfunk@msn.com)

This issue features July games.

The purpose of these newsletters is to include as many games as possible by NPCC players irregardless of the strength of the participants.

Thanks to all for submitting games!

### Games from the NPCC 2017

#### July Swiss Open Tournament:

##### Round: 4

Submitted by Terance with his comments and selected Fritz/Stockfish comments [shown thusly].

**White: Alex MacFarlane (1848)**

**Black: Terance Hall (1823)**

**Date: 7/28/2017**

[D06: Queen's Gambit: Symmetrical and Baltic Defenses] **1.Nf3 Nf6 2.c4 Nc6 3.d4 [D]**



(Terance - I was hoping for an English as I wanted to play e5. I was now resigned to play a Gruenfeld or Queen's Gambit. Now I have a Knight on c6 exposed to central pawns, not my style, as I'd rather have my pawns in front.) **3...d5**

(Terance - e6 is better.) **4.cxd5 Nxd5?!**

(Terance - Better was Qxd5.) [Stockfish 8: 4...Qxd5 5.Nc3 Qa5 6.Bd2 Qf5 7.Rc1 a6 8.h3 h6 9.e3 e6 10.Qe2 Bb4, etc...] **5.e4 [D]** (Next col.) (Terance - White has a nice advantage with play.) **5...Nf6**

**6.Nc3 e6 7.a3 [D]** (Next col.) [Precise!] [7.Bb5 Bd7 8.0-0 a6 9.Bd3 Be7 10.Re1 Na7 11.e5 Nd5 12.Ne4 Bb5, etc...Usachyi,M (2196) -Chernikov,O (2464) Naumburg 2002 0-1 (59)]

**7...Be7 8.d5 [D]** (Next col.) (Text cont. next col.)

**Position after 5.e4** (From prev. col.)



**Position after 7.a3** (From prev. col.)



**Position after 8.d5** (From prev. col.)



(Cont. from prev.col.) (Terance - Best was to continue to develop. Bd3 was good and keeps a nice advantage.] [8.Bc4 0-0 9.0-0 Na5 (9...b6 10.Bf4 Bb7 11.Re1 Qd7 12.Qd2 Rad8, etc...Dubessay,B (1660)-Ledouble,U (1360) Clichy 2003 1-0 (36)) 10.Ba2 c5 11.dxc5 Qc7 12.b4 Nc6 13.Bb2 e5 14.Nd5 Nxd5 15.exd5 Bf6 16.dxc6 1-0 (16) Bonham,R-Studer,W Meschede 1961; (Text cont. next col.)

(Cont. from prev.col.) 8.h3 0-0 9.Be3 Qe8 10.Bd3 Bd7 11.0-0 h6 12.Re1 Nh7, etc...Kretzschmar,J (1666)-Baumbach,D (1119) Berlin 2010 1-0 (34); 8.Be2 0-0] **8...exd5 9.exd5 Nb8 10.Bc4** [White has a very active position] **10...0-0 11.0-0 c6 [D]**



[Consolidates b5] (Terance - I wanted to play Bd6 but I was wrongly scared of Nb5 after the exchange on c6.) [11...Nbd7 12.Re1; Stockfish 8: 11...Bd6 12.Re1 (12.Nb5 Bg4 13.h3 Bh5 14.g4 Bg6 15.Nxd6 Qxd6, etc...)] **12.Qb3** [12.Re1 Nxd5 13.Nxd5 cxd5 14.Bxd5 Nc6; Stockfish 8: 12.h3 Nxd5 13.Nxd5 cxd5 14.Bxd5 Nc6, etc...)] **12...cxd5** (Terance - Here I was seriously thinking about playing b5 which was best according to Fritz and Stockfish. I thought I might lose the b-pawn for the d-pawn with my queenside exposed but that does not have to be the case.) [12...b5 13.Be2=; Stockfish 8: 12...b5= 13.Bd3 a6 14.Rd1 cxd5 15.Nxd5 Nxd5 16.Be4 Be6, etc...)] **13.Nxd5 Nxd5 14.Bxd5 Nc6 15.Bd2** (Terance - Alex liked this move as it covers a5, I thought Be3 was more active which both engines preferred) [15.Be3 Bd6± (Stockfish 8: 15...Qc7 16.Rac1 Bf6 17.Rfd1 Bf5 18.Rc5 Bg6, etc...)] **15...Bd7 [D]** (p.2) (Terance - I spent a lot of time to consider moves like Qb6, Bf6, Bg4, and Qd6. I was concerned about pressure on the f7 and b7 pawns and taking on c6. I was trying to calculate of making the d2 Bishop a slight target while worrying about his rooks coming in. (Text cont. p.2)

**Position after 15...Bd7 (From p.1)**



(Cont. from p.1) Of course Bd7 was not the best of choice as it blocks the queen. The other moves were better.) [15...Qb6 16.Qd3=; Stockfish 8: 16...Bf6 17.Rfe1 Be6 18.Bxe6 fxe6 19.Qc4 Nd4 20.Nxd4 Bxd4, etc...] **16.Rfe1 h6?** (Terance - I unnecessarily played this after seeing some ghost moves like Rook takes Be7 and the going to g5 putting pressure on f7 and Bxc6, Bxc6 Rxe7 Qxe7 and Bb4 and winning back the exchange. The ghost was allowing Bb4 and moving my Rook on f8, allowing Bxf7+ and taking the Rook; However, the Bishop can't go to b4 without the Bishop on d5 taking the Knight on c6 which covers b4. Then the f7 threat is gone. Best was Bf6.) [16...Bf6 17.Rad1±] **17.Re3** (Terance - Not the best placement for the Rook as the next move shows.) [Better is 17.Bc3±; Stockfish 8: 17.Bf4!? With a big advantage. 17...Na5 18.Qa2 Nc6 19.Rad1 Qe8 20.Bd6 Rd8, etc...] **17...Bc5 [D]**



(Terance - Now black has a game!) **18.Re2** (Terance - I was calculating the move Rc3 and then b6 or Qb6 with a playable game.) **18...Bg4** [18...Qb6 19.Bc3=] **19.Bc3** (Terance - After a long think Alex plays the best move.) **19...Bxf3** (19...Qb6 20.Qxb6 Bxb6 21.h3) **20.Bxf3 Nd4 [D]** (Next col.) (Terance - following through with my plan to remove one of the bishops in this open position.) **21.Bxd4 Bxd4** [Opposite colored bishops appeared] **22.Rd1 Qf6 [D]** (Next col.) **23.Red2 Rfe8 [D]** (Next col.) (Terance - Of course (Text cont. next col.)

**Position after 20...Nd4 From prev. col.)**



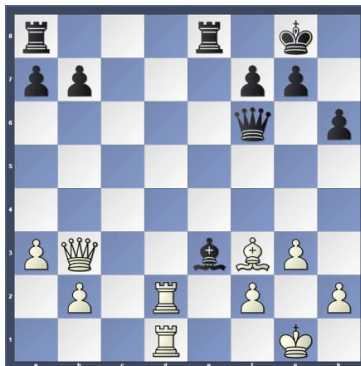
**Position after 22...Qf6 From prev. col.)**



**Position after 23...Rfe8 From prev. col.)**

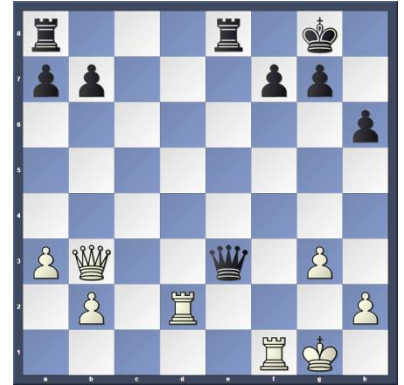


(Cont. from prev.) (Terance - Of course Rad8 is good but I wanted to create a back rank mate tactic as Rxd4 and Qxd4 Rxd4 Re1 Mate.) [Stockfish 8: 23...Rad8 24.Qxb7 Rfe8 25.b4 Bb6 26.Rxd8 Rxd8 27.Rxd8+ Qxd8, etc...] **24.g3** (Terance - Best!) **24...Be3! [D]**

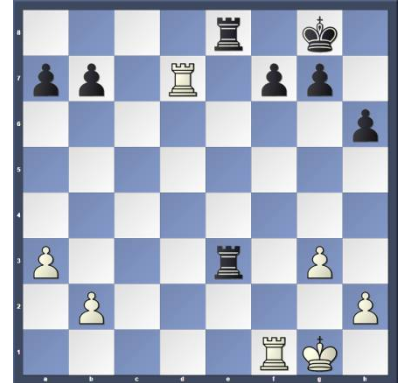


(Text cont. next col.)

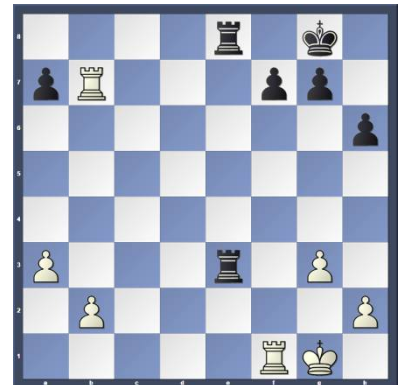
(Cont. from prev. col.) (Terance - Nice move to find in time pressure! A shock pretty move to see on the board. In one move Be3 blocks the Queen, hangs the Bishop, and threatens the Rook.) **25.fxe3** [25.Bxb7!? Bxd2 26.Bxa8 Be3 27.fxe3 Rxa8] **25...Qxf3 26.Rf1** [26.Rf2 Qxe3 27.Qxf7+ Kh8; Stockfish 8: 28.Rd7 Rg8 29.Re7 Qc5 30.Rc7 Qd4 31.Qf4 Qd1+, etc...] **26...Qxe3+ [D]**



**27.Qxe3 Rxe3** [A double rook endgame occurred.] **28.Rd7 Rae8? [D]**



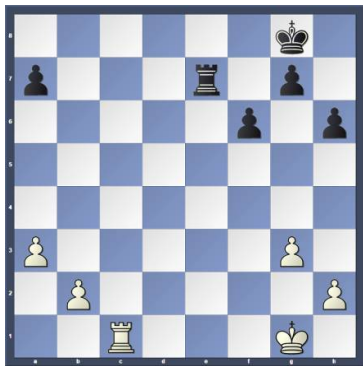
(Terance - Bad move in time pressure. I think I had a little over a minute left to make 11 moves. I think I offered a draw around now and Alex looked at my clock and declined. I don't blame him.) [28...Rf8 29.Rxb7 a5 30.b3=; Stockfish 8: 28...Rc8 29.Rxb7 Re2 30.Rf2 Rc1+ 31.Kg2 Rcc2, etc...] **29.Rxb7?? [D]**



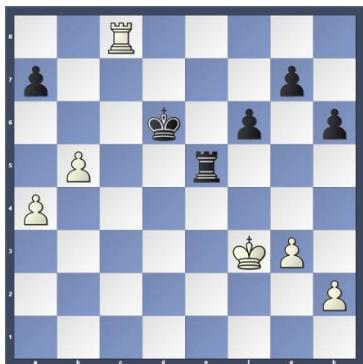
[Gives the opponent counterplay.] [Better is 29.Rxf7 White has the better game 29...Re1+ 30.Kg2 R1e2+ 31.Kh3 (Text cont. p.3)]



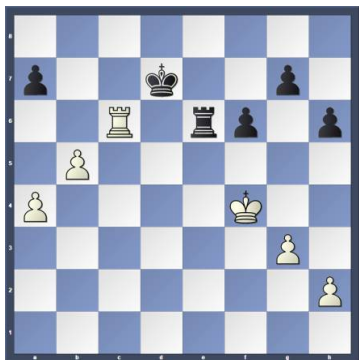
(Cont. from p.2) Rx2 32.Rxg7+ Kh8  
33.Rh7+ Kg8 34.Rdg7+ Kf8 35.Rxb7 Rxb7  
36.Rxb7] 29...R8e7 30.Rxe7 Rxe7  
31.Rc1 f6 [D]



[Stockfish 8: 31...Re3 32.Rc8+ Kh7 33.Rc7 f6  
34.Rb7 Rd3 35.Kf1 Rd2, etc...] 32.b4 Kf7  
33.a4 Rb7 [Stockfish 8: 33...Re4  
34.Rc7+ Kg6 35.Rxa7 Rxb4 36.a5 Rb1+  
37.Kf2 Rb2+, etc...] 34.b5 [White gains  
space] 34...Ke6 35.Kf2 Kd6 36.Ke3  
Re7+?! [36...Kd5 37.Rc6=] 37.Kf3 [Bet-  
ter is 37.Kf4±; Stockfish 8: 37...Re2  
38.Rc6+ Kd5 39.Rc7 Re4+ 40.Kf5 Rxa4,  
etc...] 37...Re5? (Terance - With se-  
conds left just making moves to meet the  
time control.) [37...Kd5 38.Rc8=; Stock-  
fish 8: 37...g5 38.Rc6+ Ke5 39.a5 h5 40.b6  
axb6 41.axb6 Rb7 42.h4 Rb8, etc...]  
38.Rc8?? [D]

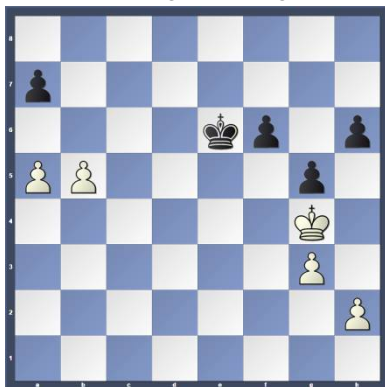


[Letting the wind out of his own sails.]  
[Better is 38.Rc6+ a shame that White  
overlooked this excellent chance 38...Kd5  
39.Rc7 Rf5+ 40.Kg2; Stockfish 8: 40...a6  
41.b6 Re5 42.Rxg7 Re2+ 43.Kf3 Ra2 44.b7  
Ra3+, etc...] 38...Re7 [38...Rc5 39.Rd8+  
Kc7 40.Rg8 Rf5+ 41.Kg2] 39.Kf4 Kd7  
40.Rc6 Re6?? [D]

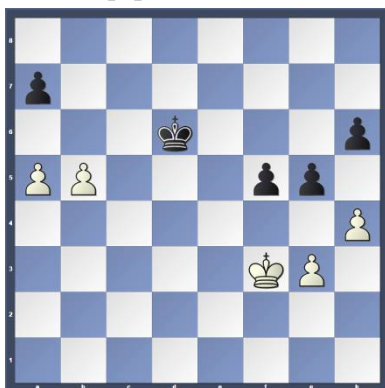


(Text  
cont. next col.)

(Cont. from prev. col.) (Terance -  
This move is a blunder that losses.  
This last move I had about 14 se-  
conds left on my clock. What a sink-  
ing feeling I had.) [Better is 40...Ke8  
is a viable option; Stockfish 8: 41.h4  
h5 42.a5 Re5 43.Rc8+ Kd7 44.Rg8  
Rxb5, etc...] 41.Rxe6 Kxe6 42.a5  
(Terance -At this point I sat up to as-  
sess the position to see if I had any  
chances knowing that I had one move  
with my King to catch White's pawns  
from promotion. I wanted to create  
any treats on my kingside majority of  
pawns and found g5+ as my best  
chance.) 42...g5+ 43.Kg4?! [D]

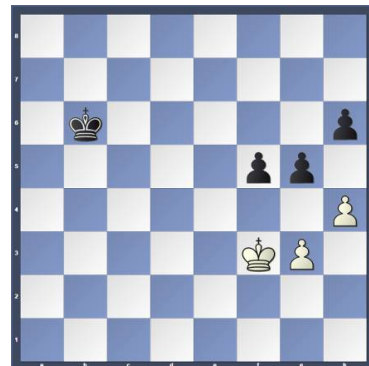


(Terance - Now it is a draw!) [Better  
is 43.Ke4! Nails it down. 43...f5+  
44.Kd4; Stockfish 8: 44...Kd6 45.b6  
axb6 46.axb6 Kc6 47.Ke5 f4 48.gxf4  
gxf4 49.Kxf4 Kxb6 50.Kf5 h5, etc...]  
43...f5+ (Terance - Now the king-  
side pawns hold the position on their  
own. The white King can never try to  
take the hanging h-pawn as f4 will go  
home and queen. The check gives me  
the move I need to catch the  
queenside pawns.) 44.Kf3 Kd6  
45.h4?? [D]

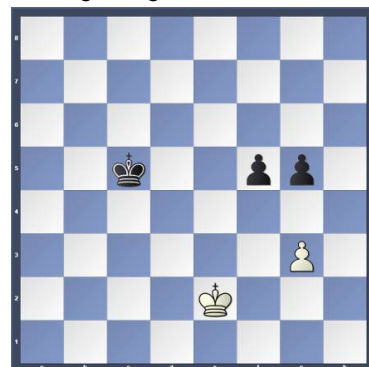


[Throws away the game.] [Better is  
45.Ke3= would save the game; Stock-  
fish 8: 45...Kc5 46.b6 axb6 47.axb6  
Kxb6 48.Kd4 Kc6 49.Ke5 f4 50.gxf4  
gxf4, etc...] 45...Kc5 (Terance - At  
this point I figured I had a win and at  
the least a draw if I played it wrong.)  
(Text cont. next col.)

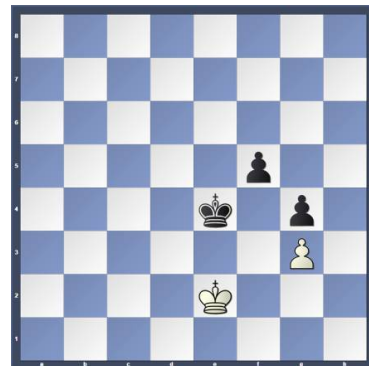
(Cont. from prev. col.) 46.b6  
axb6 47.axb6 [Stockfish 8: If 47.a6  
Kc6 48.Kg2 gxh4 49.Kf3 b5 50.a7 Kb7,  
etc...] 47...Kxb6 [D]



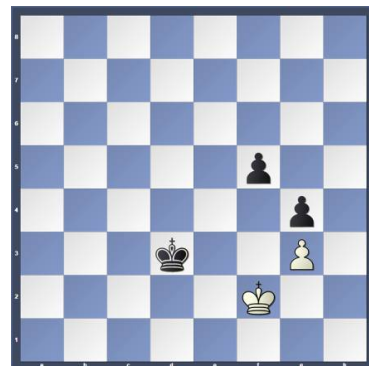
48.hxg5 hxg5 49.Ke2 Kc5 [D]



(Terance - Now it is just using oppo-  
sition to win.) 50.Ke3 Kc4 51.Ke2  
Kd4 52.Kd2 Ke4 53.Ke2 g4 [D]



(Terance - Zugzwang! The key move  
to win the pawn and the game.]  
54.Kf2 (Terance - If White now  
would get Ke5 in, he might survive.)  
54...Kd3 [D]



(Text cont. p.4)

(Cont. from p.4) **0-1** [54...Kd3 55.Kf1 Ke3 56.Kg2 Ke2 57.Kg1 Kf3 58.Kf1 Kxg3 59.Ke2 Kh2 60.Ke3 g3 61.Kf4 g2 62.Kxf5 [D]



**Analysis Diagram**

### Round: 3

Submitted by Don with selected Fritz comments [shown thusly].

**White: Michael O`Gara (1706)**

**Black: Don Forest (1440)**

**Date: 7/21/2017**

[D16: Slav Defense: 5 a4: Lines with 5...Bg4 and 5...Na6] **1.d4 d5 2.c4 c6 3.Nc3 [D]**



**3...dxc4 4.a4 Nf6 5.e3 Bg4 6.Nf3 Na6 7.Bxc4 e6 8.0-0 Be7 9.Be2 Nb4 10.Bd2 [D]**

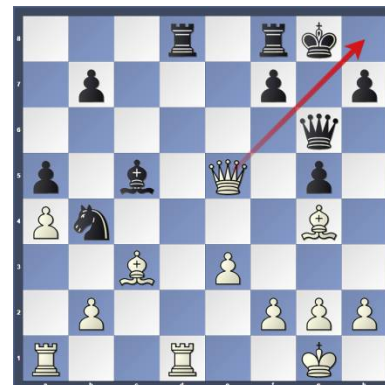


**10...0-0 11.Qb1 c5 12.Ne4 a5 13.Rd1 Qb6** [13...Nxe4!? 14.Qxe4 Bf5 15.Qxb7 Rb8=] **14.dxc5 Bxc5 15.Nxf6+ [D]** (Next col.) **15...gxf6 16.Bc3** [Better is 16.Qe4 Bf5 17.Qh4±] **16...e5??** [Throwing away the advantage.] [Better is 16...Bf5 and Black could well hope to play on 17.Qc1 Rac8=] **17.Ng5!** [Discovered attack: f3, Be2xg4] (Text cont. next col.)

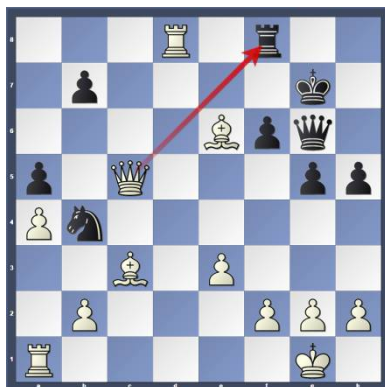
**Position after 15.Nxf6+ (From prev. col.)**



(Cont. from prev. col.) **17...fxg5** [17...fxg5 18.Bxg4 Discovered attack: 17...-- 18.Qxh7# Mate threat] **18.Bxg4 Rad8** [18...Rfe8±] **19.Qf5 Qg6??** [The pressure is too much, Black crumbles.] [19...f6] **20.Qxe5 [D]**



**20...f6** [20...Bd4 does not improve anything 21.Bxd4 Rxd4 22.exd4] **21.Qxc5 h5** [21...Nc6 praying for a miracle 22.Be6+ Kg7 23.Bxa5 Qe8 24.Bxd8 Qxe6] **22.Be6+ Kg7 23.Rxd8 [D]**



**1-0** [23.Rxd8 Rxd8 24.Qe7+ Kh6 25.Qxd8 Nd5 26.Bxd5 Qg7 27.Bxf6 g4 28.Bxg7+]

### Round: 4

Submitted by Olin with my comments and selected Fritz and Stockfish comments [shown thusly]. (Text cont. next col.)

(Cont. from prev. col.)

**White: Robert Hepp (1225)**

**Black: Olin Mastin (1577)**

**Date: 7/28/2017**

[B34: Sicilian: Accelerated Dragon with 5 Nc3: sidelines] **1.e4 c5 2.Nf3 Nc6 3.d4 cxd4 4.Nxd4 g6 5.Be3 Bg7 6.c3 a6 [D]**



[Controls b5] (Olin - Not necessary at this point.)

[6...Nf6 7.Nd2

**A) 7...0-0**

**A1) 8.Be2 d5 9.exd5 (9.Nxc6 bxc6 10.Qa4 Qc7 11.0-0 dxe4 ½-½ (11) Kreuzer,M (2285)-Kraft,V (2250) Germany 1995) 9...Nxd5 10.Nxc6 bxc6 11.Nc4 Nxe3 12.Nxe3 Rb8 13.Qc2 Bh6 14.Rd1 Qa5 15.b4 Qe5 16.Nc4 Qc7 17.0-0 c5 18.a3 Be6 19.Qe4 Bg7 20.Rc1 Rfd8 21.Ne3 Bh6 22.Bc4 Rd6 Fried-**

**A2) 8.Nxc6 bxc6 9.Bd3 d5 10.0-0 e5 11.Qa4 d4 12.cxd4 Ng4 13.Qxc6 Rb8 14.d5 Nxe3 15.fxe3 Rxb2 16.Nc4 Rb7 17.Rab1 Rc7 18.Qd6 Rd7 19.Qc5 Ba6 20.Qa3 Bxc4 21.Bxc4 Qh4 22.Qd3 Bf6 Ruiz Diez,J (2215)-Sanchez Guirado,F (2365) Oropesa del Mar 1996 ½-½ (55);**

**A3) 8.h3 d5 9.Nxc6 bxc6 10.Bd3 Qc7 11.0-0 Rb8 12.Qc2 dxe4 13.Nxe4 Nd5 14.Bg5 f5 15.Nc5 Qd6 16.Nb3 f4 17.Bh4 f3 18.Rfe1 fxe2 19.Bg3 Nf4 20.Bc4+ Kh8 21.Qe4 e5 22.Rad1 Dashko,A (2359)-Savchenko,B (2543) Belorechensk 2005 0-1 (32))**

**B) 7...d5 8.Bb5 Bd7 9.Bxc6 bxc6 10.e5 Ng8 11.f4 Nh6 12.N2f3 0-0 13.0-0 Ng4 14.Bd2 c5 15.Nb3 Ba4 16.h3 Nh6 17.Qc1 Qb6 18.Be3 Bxb3 19.axb3 Nf5 20.Bf2 a5 21.Ra3 Stojanovic,Z (2200)-Skembris,S (2415) Bor 1983 0-1 (60)] (Text cont. p.5)**



(Cont. from p.4) **7.Nd2 Nf6 8.Bd3**  
**0-0 9.h3 e6** [Black's piece can't move:  
 c8] **10.N2f3 d6 [D]**



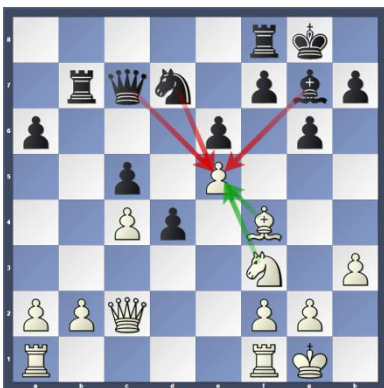
**11.Nxc6 bxc6 12.Qb3** [Black has a  
 cramped position] **12...d5 13.e5 Nd7**  
**14.Bf4 c5 15.c4 d4 [D]**



[Black has a new protected passed pawn:  
 d4.] **16.Be4 Rb8 17.Qc2 Bb7 [D]**



**18.Bxb7 Rxb7 19.0-0 Qc7 [D]**

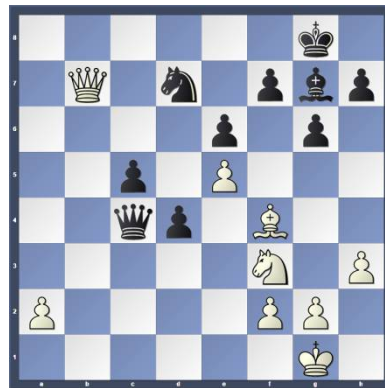


[e5 draws heavy fire] **20.Rfe1 Rfb8**  
**21.b3 a5 22.Rab1 Qc6 23.Qd2 a4**  
**24.Qd3 [D]** (Next col.)(Text cont.  
 next col.)

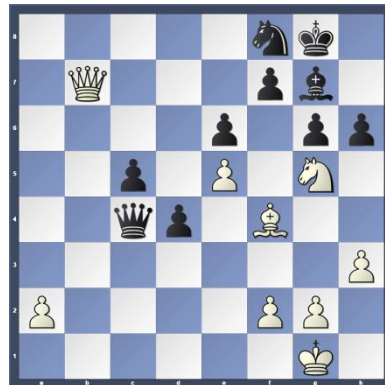
**Position after 24.Qd3** (From  
 prev. col.)



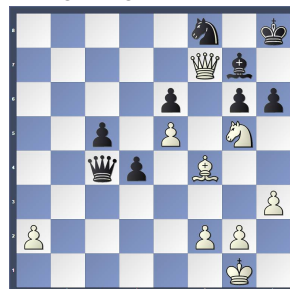
(Cont. from prev. col.)  
**24...axb3 25.Rxb3 Qa6 26.Rxb7**  
 [26.Reb1!? should be considered]  
**26...Rxb7 27.Rb1 Rxb1+**  
**28.Qxb1 Qxc4 29.Qb7 [D]**



**29...Nf8** [Black's piece can't move:  
 f8] [Better is 29...Qa4!?] **30.Ng5**  
**h6?? [D]**

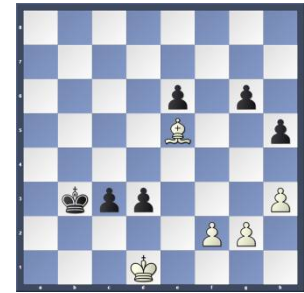


[An unfortunate move that relin-  
 quishes the win] [Better is 30...d3  
 saving the game 31.Qxf7+ Kh8=][D]



**Analysis Diagram**  
 (Text cont. next col.)

(Cont. from prev. col.) (Olin - I did  
 consider this move but I thought I  
 wouldn't have time because of the  
 precarious position my king was in.  
 Passed pawns must be pushed! So  
 what would I have had to lose to try  
 it?!) [31.Qxf7+ Kh8=; Stockfish 8 64:  
 1) 30...d3 31.Qxf7+ Kh8 32.Nf3 Qa4  
 33.Bg5 Qd7 34.Qxd7 Nxd7 35.a4 Bxe5  
 36.Nxe5 Nxe5 37.a5 c4 38.a6 Nc6  
 39.Be3 Kg7 40.Kf1 Kf6 41.Ke1 c3  
 42.a7 Nxa7 43.Bxa7 Ke5 44.Bc5 Ke4  
 45.Kd1 Kd5 46.Bf8 h5 47.Bg7 Kc4  
 48.Be5 Kb3][D]



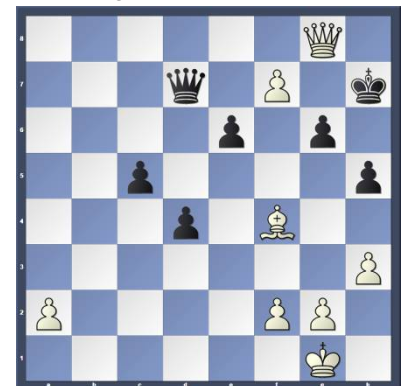
### Analysis Diagram

(Olin - So as Stockfish has proven,  
 things would have worked out just  
 fine! Why be timid when there was  
 nothing to lose by giving 30...d3 a  
 try!)

**31.Qxf7+ Kh8 32.Ne4 Qd5 [D]**



(Olin - From here on, the game is  
 hopelessly lost!) **33.Nf6 Bxf6**  
**34.exf6 Qd7 35.Qxf8+ Kh7 36.f7**  
**h5 37.Qg8# [D]**



**1-0**

## Round: 4

Submitted by Steve with selected Fritz and Stockfish comments [shown thusly].

**White: Don Forest (1440)**

**Black: Steve Atlee (Unr)**

**Date: 7/28/2017**

[E18: Queen's Indian: Old Main Line (4 g3 Bb7 5 Bg2 Be7 6 0-0 0-0 7 Nc3)] **1.d4**

**Nf6 2.c4 e6 3.Nf3 Be7 4.Bg5 0-0**

**5.Nc3 b6 6.g3 Bb7 7.Bg2 d5 [D]**



**8.cxd5 exd5 [Stockfish 8: 8...exd5 9.0-0**

**Nbd7 10.Rc1 c6 11.e3 h6 12.Bf4 Nh5**

**13.Re1 Re8 14.a3 Nxf4 15.exf4 Nf6**

**16.Ne5 a5 17.h4 Bd6 18.Qd3 Qe7 19.Bh3]**

**9.0-0 h6 10.Bf4 Nbd7 11.b3 Rc8**

[Stockfish 8: 11...Ne4 12.Nxe4 dxe4

13.Ne5 Nf6 14.Qc2 c5 15.dxc5 Bxc5, etc...]

**12.Rc1 c5 13.Nb5 Ra8 [13...g5**

**14.Be3=] 14.Nd6 [D]**



**[14.Nh4 Bc6 15.Bc7 Qc8] 14...Bxd6**

**[14...Ba6!? deserves consideration**

**15.dxc5 bxc5] 15.Bxd6 Re8 16.Bh3**

**[16.dxc5!? Nxc5 17.Bxc5 bxc5 18.Rxc5±]**

**16...Ba6 17.Re1 Ne4 18.Bf4 Rc8**

**19.Ne5 Nef6 [19...Bb5 20.dxc5 Rxc5**

**21.Bxd7 Rxc1 22.Bxc1 Bxd7 23.Qxd5±]**

**20.Qd2 [20.Nxd7 Nxd7 21.b4 g5±]**

**20...g5 [D] (Next col.) [20...Ne4!?**

**might be a viable alternative 21.Qc2 Bb5;**

**Stockfish 8: 20...Ne4 21.Qc2 Bb5 22.a4**

**Bc6 23.f3 Ng5 24.Bxg5 hxg5 25.Qf5 Nxe5,**

**etc...]** **21.Bxg5! [Taking the lead.]**

**21...hxg5 22.Qxg5+ Kf8 [Stockfish 8:**

**22...Kf8 23.Nxd7+ Nxd7 24.Qh6+ Kg8**

**25.Bf5 Nf8 26.Bxc8 Bxc8 27.dxc5 bxc5,**

**etc...]** (Text cont. next col.)

**Position after 20...g5 (From prev. col.)**



(Cont. from prev. col.) **23.Qh6+**

**Ke7?? [The pressure is too much,**

**Black crumbles.][Better is 23...Kg8**

**24.Nxd7 Nxd7±; Stockfish 8) 23...Kg8**

**24.Nxd7 Nxd7 25.Bf5 Nf8 26.Bxc8**

**Bxc8 27.dxc5 bxc5 28.Rxc5 Ne6, etc...]**

**24.Qg7 [Better is 24.Nxd7 and White**

**can celebrate victory 24...Ne4 25.Qg7**

**Kd6 26.Qxf7 Qg5 27.Nxb6 Re7**

**28.Qxd5+ Qxd5 29.Nxd5 Kxd5**

**30.Bxc8 Bxc8] 24...Rf8?? [D]**



[Better is 24...Nxe5!? has some ap-

**parent merit 25.dxe5 Ne4±; Stockfish**

**8: 24...Nxe5 25.dxe5 Ne4 26.e6 Kd6**

**27.exf7 Rf8 28.Bxc8 Bxc8 29.f3 Ng5,**

**etc...]** **25.Rc3 [Better is 25.e4!?**

**makes it even easier for White**

**25...Kd6 26.Nxf7+ Rxf7 27.e5+ Kc7**

**28.Qxf7 Qe8 29.Qxe8 Nxe8 30.dxc5**

**bxc5] 25...cxd4? [Better is 25...Nxe5**

**26.Re3 Rc7 27.dxe5 Ne4±] 26.Nc6+**

**Rxc6 27.Rxc6 Bc8 28.Re6# [D]**



**1-0**

**This concludes this issue. More games in next issue.**

## Other places to play chess:

The below are for friendly off hand non-rated games (clocks optional). Bring chess set.

## Monday evenings:

About 6:00 to 10:00 PM, "Starbucks," 10 North Main Street, Doylestown

## Tuesday mornings :

9:30 AM to Noon at the Pennridge Community Senior Center in Sil-verdale. Located on route 113 near route 152

## Wednesday evenings :

7:30 to 10:00 PM, "Christ Re-formed Church at Indian Creek" located at 171 Church Road (in-tersection with Cowpath Road), Telford, PA. (Closed for summer, will resume after Labor Day.)

## Weekdays:

8:00 to 4:00 Daily, Senior Center, 312 Alumni Ave, Harleysville, PA

## Friday Mornings:

10:00 AM up to 2:00 PM

Indian Valley Public Library, 100 E. Church Ave, Telford, PA

## Allentown Center City Chess Club

**Offer** (from Eric C. Johnson): "For any of our events -- If three or more Lansdale players carpool together -- the designated driver plays for free!"

<http://www.freewebs.com/allentowncentercitychessclub>