

~ En Passant ~

Newsletter of the North Penn Chess Club, Lansdale, PA – Spring 2017, Part 1

E. Olin Mastin, Editor

North Penn Chess Club

500 West Main Street

Lansdale, PA 19446

www.northpennchessclub.org

(215) 699-8418 donfunk@msn.com

This issue features Matt Martello's games, IM Khmelnitsky Simul, and March games.

The purpose of these newsletters is to include as many games as possible by NPCC players irregardless of the strength of the participants.

Thanks to all for submitting games!

Game from the 2017 Greater Philadelphia Weekend Open Chess Tournament, Keystone Chess Club, Horsham, PA:

Round: 1

Submitted by Matt with his comments and with selected Fritz comments [shown thusly].

White: GM Bryan Smith (2478)

Black: Matt Martello (1942)

Date: 5/13/2016

[C67: Ruy Lopez: Berlin Defense: 4 0-0

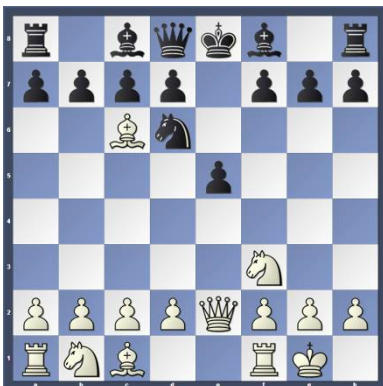
Nxe4] **1.e4 e5 2.Nf3 Nc6 3.Bb5 Nf6**

(Matt: We got into Berlin Wall Defense. I like and feel very comfortable playing the Berlin Wall Defense. 3...a6 or 3...Bc4 are good options as well.) **4.0-0 [D]**



4...Nxe4 (Matt: Should I have taken the pawn at e4? If I don't, the e4 pawn will become more troublesome later in the game. However, I am comfortable with doing this variation as well) **5.Qe2 Nd6** (Matt: The main line continuation here is 5. d4 since the Black's e-pawn would be double-attacked, and the d and e files would be opened up for White's Queen and dark-square Bishop.) (Text cont. next col.)

(Cont. from prev.col.) **6.Bxc6 [D]**



6...dxc6 7.Qxe5+ Be6 (Matt: This was a mistake on my part. I should have played 7...Qe7 here so either (A) we trade off queens, or (B) I could develop normally with Castling and keep my Kingside pawns strong.)

8.Ng5 Qf6 (Matt: I decided at this point to trade off Queens because I felt that he was putting so much pressure on the e6 square.) **9.Re1 [D]**



9...Qxe5 10.Rxe5 Kd7 (Matt: I decided that I wasn't going to castle this game.) **11.Nxe6 fxe6** (Matt: Bryan created the pressure on e6. His goal was to isolate my pawn on f7. He accomplished his goal. Now I have a very weak isolated pawn that I have to try to defend.) **12.d3 Nf5 13.Re4 Bd6 14.Nd2 b5** (Matt: Bryan played Nd2 planning to bring his Knight into play by eventually attacking the isolated e6 pawn. I decided to play b5 so that his Knight couldn't go on the c4 square.)

15.Nf3 c5 (Matt: I played here for two reasons: The first reason was that I did not want his Knight to go to the d4 square. The second reason was that I (Text cont. next col.)

(Cont. from prev.col.) did not want his Knight to go to the e5 square and fork both my King and pawn.)

16.Bd2 Rae8 (Matt: I'm trying to defend the e6 pawn as best as I can.)

17.Rae1 b4 (Matt: I played this move to prevent his bishop from controlling the h8-a1 diagonal.) **18.Ng5 Re7 [D]**

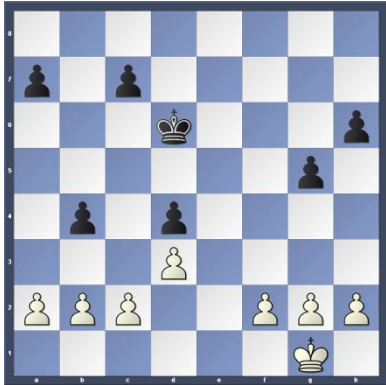


(Matt: At this point, I decided that the e6 pawn was lost. I thought about what my chess coach NM Peter Minear said about when Plan A doesn't work anymore make a Plan B. So I went with Plan B, which was trying to get my King and pawns in the best position possible for the later endgame position.) **19.Nxe6 Rhe8 20.Ng5 h6 21.Rxe7+** (Matt: I'm thinking here that he wanted to trade off the rooks because he has a pawn lead. He can win the game from this point on.) **21...Rxe7 22.Rxe7+ Kxe7 23.Ne4 g5 [23...Kd7!? 24.c3±] 24.Be3** (Matt: I was a little shocked here that he did not trade his Knight for my Bishop since Bishops are better than Knights in endgame) **[D]**



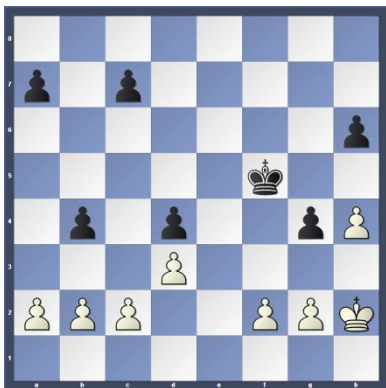
24...Nd4? [Better is 24...Nxe3 25.fxe3 Be5] (Text cont. p.2)

(Cont. from p.1) (Matt: I was a little shocked here that he did not trade his Knight for my Bishop since Bishops are better than Knights in endgame.) **25.Bxd4** (Matt: I was really shocked that he traded his Bishop for my Knight first. I thought that he was going to trade his Knight for my Bishop.) **cx d4 26.Nxd6 Kxd6 [D]**



27.h4

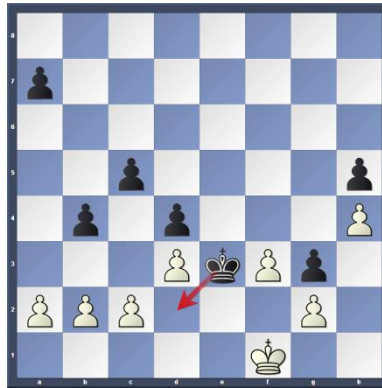
[Better is 27.g4 and White can already relax 27...Ke5 28.f3 Kf4] **27...g4?** (Matt: He thought that I was going to take his h4 pawn, but instead I went to g4 to gain more space against him.) **28.Kh2 Ke5 29.Kg3 Kf5** (Matt: I was fighting for more space in this position here to try the best that I can to either win or draw.) **30.Kh2** (Matt: I was shocked that he played Kh2 here. He was very low on time. He had less than five minutes. I thought he was going to move his f-pawn to f3 so that he could create a passed pawn which could later go for a Queen. So I took advantage of his positional mistake and gained more space with my King.) **[D]**



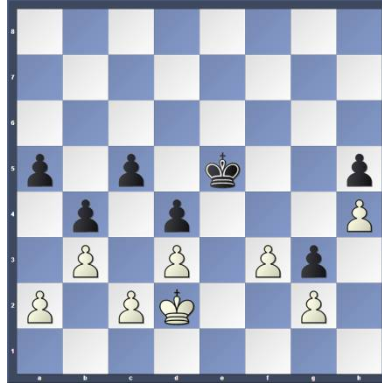
[Better

is 30.f3 secures the point 30...gxf3 31.Kxf3] **30...Kf4 31.Kg1 g3** (Matt: Gaining more space and taking control of his cramped position.) **32.f3 Ke3** (Matt: Pretty much at this point, it is a draw. Since I had more "wasted" moves, I tried to make the moves to see if he would make a mistake or not. I also calculated here if I could Queen first. However, I saw that I would not be able to do that.) **33.Kf1 h5 34.Ke1 c6 35.Kf1 c5 [D]** (Next col.) (Text cont. next col.)

Position after 35...c5 (From prev. col.)



Cont. from prev. col.) **36.Ke1 a5 37.b3 Kf4 38.Kd2 Ke5 [D]**



½-½

Game from a Main Line

Chess Club Tournament:

MLCC "Daylight Savings

Time Is a Scam"

Round: 2

Submitted by Matt with selected Fritz comments [shown thusly].

White: Matt Martello (1983)

Black: NM Stan Busygin (2323)

Date: 3/28/2017

[C50: Hungarian Defense and Giuoco Pianissimo] **1.e4 e5 2.Nf3 Nc6**

3.Bc4 Bc5 4.Nc3 Nf6 5.d3 d6

6.Bg5 [D]



6...Na5 7.Bb3 c6 8.d4 exd4 9.Nxd4 Nxb3 10.Nxb3 Bb6 11.Qf3 h6 [D] (Next col.) **12.Bxf6 Qxf6 13.Qxf6 gxf6 14.f3 f5** (Text cont. next col.)

11...h6 (From prev. col.)



(Cont. from prev. col.) **15.0-0-0 Ke7** [Black loses the right to castle.] **16.Rhe1 f4 17.Nd4 Rg8 18.Nce2** [Better is 18.Rg1!?= has some apparent merit.] **18...Rgx2 19.Nxf4 [D]**



19...Rhx2 20.e5 d5 21.e6 [21.c3 Bc7] **21...Bxd4** [21...fxe6!? 22.Nfxe6 Kf6 23.Nf4] **22.exf7+ Kxf7 23.Rxd4 Bf5 24.Nd3?** [Better is 24.Rd2!? Rh4 25.Ng2] **24...Kf6+ 25.Rf4 Rg8 [D]**



26.Ne5? [Sad, but how else could White save the game?] [26.b4 h5 27.Re5] **26...Rxc2+ 27.Kd1 Rgg2 28.Ng4+ [D]**

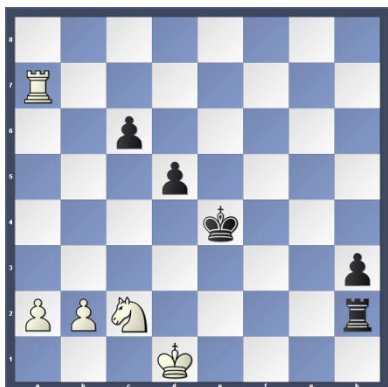


(Text cont. p.3)

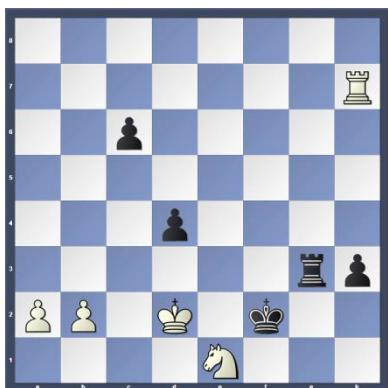
(Cont. from p.2) **28...Kg5** [Better is 28...Kg6 and the rest is a matter of technique 29.Re8 Rg1+ 30.Re1 Rxe1+ 31.Kxe1 Rxb2 32.Nxh6 Kxh6 33.Rxf5 Rxa2 34.Rf6+ Kg5] **29.Rxf5+ Kxf5** [Black has a mate threat.] **30.Ne3+ [D]**



[White forks: c2+g2] **30...Kf4** [Black has a mate threat] **31.Nxc2 Kxf3** [31...h5 32.Rh1 Kg5 33.Kc1] **32.Re6 Rh2 33.Re7 h5 34.Rxb7 h4** [34...a5 35.a4 c5 36.Rc7±] **35.Rf7+ [35.Rxa7!? h3 36.a4±] 35...Ke4 36.Rxa7 h3 [D]**

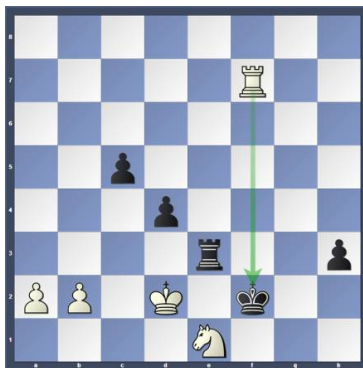


[Is this a dangerous pawn?] **37.Rf7 Rg2?** [A beautiful square!] [37...d4 38.Rh7] **38.Re7+ [Better is 38.Rh7 would have given White the upper hand 38...Rh2 39.a4] 38...Kf4 39.Rf7+ [39.Ne1 Rg8] 39...Kg3 40.Rg7+ Kf2 41.Rh7 Rg3 42.Ne1 [42.a4 Kg1 43.Nb4 c5 44.Nxd5 h2] 42...d4 [42...Re3!? 43.Rf7+ Kg3=] 43.Kd2 [D]**

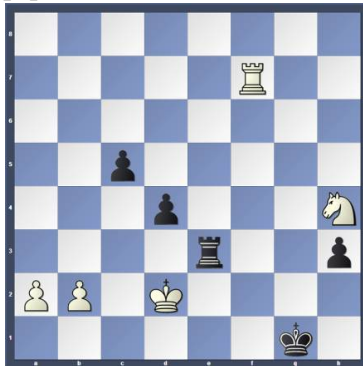


43...Kg1 44.Ke2 [44.b4!?] 44...Re3 45.Kd2 c5 [Black has a new protected passed pawn: d4] (Text cont. next col.)

(Cont. from prev. col.) **46.Rg7+ Kf2 [46...Kf1 47.Rf7+ Kg1 48.Nf3+ Kg2 49.Ne1+ Kg1 50.Rf6=] 47.Rf7+ [D]**



[47.Nd3+!? should be investigated more closely 47...Kf1 48.Rf7+ Kg1 49.Nxc5] **47...Kg1 48.Nf3+ Kg2 49.Nh4+ Kg1 50.Nf3+ [Twofold repetition] 50...Kg2 51.Nh4+ Kg1 [D]**



½-½

Matt Martello's Chess Tutoring/Coaching 610-812-5433
mathewmartello2@gmail.com

Games from the NPCC 2017

IM Khmelnitsky Simul:

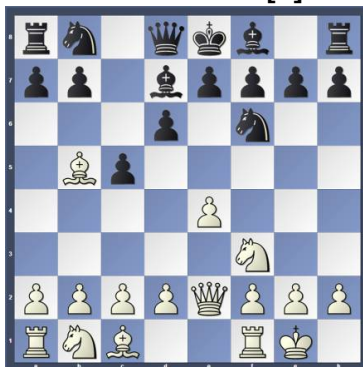
Submitted by Alex with selected Fritz comments [shown thusly].

White: IM Igor Khmelnitsky (2527)

Black: Alex Wang (Age 12) (2116)

Date: 4/21/2017

[B52: Sicilian: Moscow Variation with 3...Bd7] **1.e4 c5 2.Nf3 d6 3.Bb5+ Bd7 4.Qe2 Nf6 5.0-0 [D]**



(Text cont. next col.)

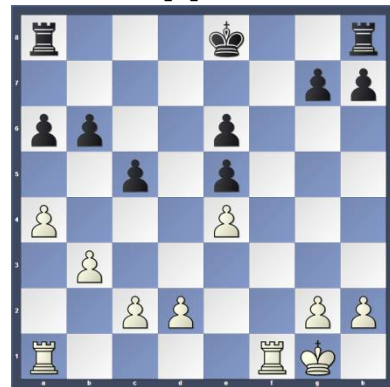
(Cont. from prev. col.) **5...Bxb5 6.Qxb5+ Qd7 7.Qxd7+ Nbx d7 8.Re1 e6 9.b3 Ne5 [D]**



[9...Be7 10.Bb2 0-0 11.d3 Rfd8 12.Nbd2 Rac8 13.a4 h6 14.h3 b6 15.e5 ½-½ (15) Farkas,T (2255)-Keresztes,R (2237) Kecskemet 2013] **10.Nxe5 dxe5** [Black has new doubled pawns: e5+e6] **11.Na3 Bd6 12.Bb2 Nd7 13.Nb5 Bb8 14.a4 a6 15.Na3 Bc7 16.Nc4 b6 [D]**



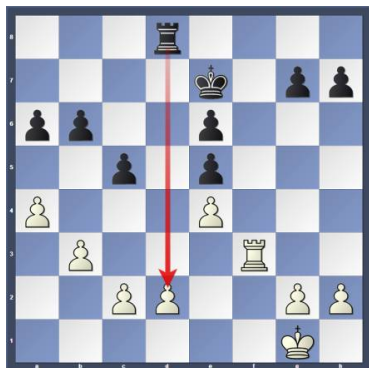
[Secures a5] **17.f4 f6 18.fxe5 Nxe5 19.Bxe5 Bxe5 20.Nxe5 fxe5 21.Rf1 [D]**



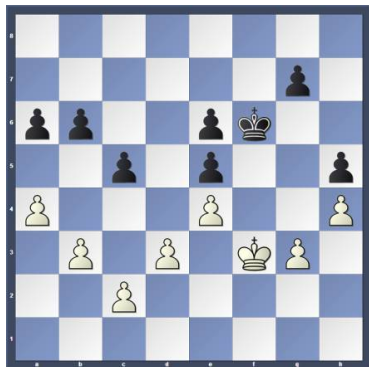
[White traps the enemy king in the center] **21...Ke7 22.Rf3 Rhf8 23.Raf1 Rxf3 24.Rxf3 Rd8 [D]** (p.4) **25.d3 Rf8 26.Kf2 Rxf3+ 27.Kxf3** [A pawn endgame occurred] **27...Kf6 28.h4 h5 29.g3 [D]** (p.4)

(Text cont. p.4)

Position after 24...Rd8 (From p.3)



Position after 29.g3 (From p.3)



1/2-1/2



12-year-old Alex Wang, rated 2116.

Draw

Submitted by Don with his comments and selected Fritz comments [shown thusly].

White: Don Funk (1600)

Black: IM Igor Khmelnytsky (2529)

Date: 4/21/2017

[A03: Bird's Opening with 1...d5] 1.f4 d5 [D]



(Text cont. next col.)

(Cont. from prev. col.) (Don - I had hoped he would have played 1...e5 so I could go into the King's Gambit with 2.e4!) 2.Nf3 Nc6 3.e3 Bg4 4.Be2 e6 5.0-0 [D]



5...Bxf3 6.Bxf3 [White has the pair of bishops.] 6...Nf6 7.b3 e5 8.fxe5 Nxe5 [White has a cramped position.] 9.Bb2 Bd6 10.d3 [Prevents intrusion on c4+e4] [10.c4 c6=] 10...Qe7 11.Qd2 0-0-0 [D]



12.Nc3 c6 [Consolidates b5] 13.Nd1 Rhe8 14.Rc1 h5 15.c4? [Better is 15.Be2!? and White could well hope to play on] 15...dxc4 16.bxc4 Nfg4 [16...Nxd3 17.Bxf6 gxf6 18.Rb1] 17.g3 [17.Bxe5 Bxe5 18.g3 f5 19.Bxg4 fxg4] 17...Kb8 [D]



[17...Bb4!? 18.Qe2 Nxd3 19.Bxg4+ hxg4 20.Qxg4+ Qe6 21.Qxe6+ Rxe6+] 18.Bxe5 Bxe5 [Opposite colored bishops appeared.] 19.Rb1 Qc7 20.Bxg4 hxg4 21.Qf2 [21.c5 Bf6=] 21...Bf6 [21...Rxd3 22.Qxf7 Red8 23.Qxc7+ Bxc7 24.c5] 22.Qf5 [22.d4 c5 23.d5 Re4=] 22...Qd7

(Text cont. next col.)

(Cont. from prev. col.) [Better is 22...Re5 23.Qxg4 Rxd3] 23.Rb3 Re5 [D]



(Don - Igor offered a draw. Normally I take time to analyze and respond. This time it took me about three seconds!!) 1/2-1/2



Don Funk - Draw



Jack Lieberman - Draw

(Text cont. p.5)



Joe Iacovitti - Draw

IM Igor Khmel'nitsky "making the rounds." He played 24 boards allowing only four draws.



Game from the NPCC 2017 March G45 Two-Night Chess

Tournament:

Round: 3

Submitted by Le Roi with selected Fritz comments [shown thusly].

White: Bob Kampia (1789)

Black: Le Roi Thompson (1310)

Date: 3/17/2017

[C02: French: Advance Variation]

1.e4 e6 2.d4 d5 3.e5 c5 4.c3
Qb6 5.Qb3 [D]

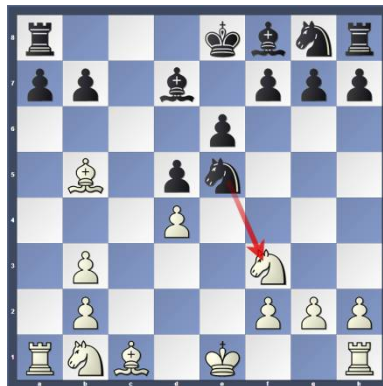


5...Qxb3 6.axb3 cxd4 7.cxd4

[Black has a cramped position.]

7...Nc6 8.Nf3 Bd7 9.Bb5 [Better is
9.Nc3!? should be considered.]

9...Nxe5! [D]



[Discovered attack: c6, Bd7xb5]

10.Bxd7+ [10.dxe5 Bxb5 Discovered
attack; 10.Nxe5 Bxb5 Discovered at-
tack.] 10...Nxd7 11.O-O Ngf6

12.Bg5 Bd6 13.Bxf6 Nxf6 14.Re1
a6 15.Re2 Rc8 16.Nbd2 Rc2 [D]



(Text cont. next col.)

(Cont. from prev. col.) 17.Ra2?

[17.Kf1 Ke7 18.Nb1 Rc1+ 19.Re1

Rxe1+ 20.Nxe1] 17...Bb4 18.Kf1

Ke7 19.Ke1 [19.Ra1 does not win a
prize 19...Rhc8 20.Rd1 Rxb2]

19...Ne4 ?? [D]



[19...Rc1#!] 20.Kd1 Nxd2

[20...Rhc8 keeps an even firmer grip
21.Ra1 Nxd2 22.Nxd2 Rxb2 23.Rb1]

21.Nxd2? [Better is 21.Kxc2 would
bring relief 21...Rc8+ 22.Kd1 Nxf3
23.gxf3] 21...Rhc8 22.Nf1 [22.Ra1
doesn't change the outcome of the
game 22...Rxb2 23.Rb1 Rcc2 24.Rxb2
Rxb2] 22...Rxe2 [22...Rc1#]
23.Kxe2 Rc2+ [D]



24.Ke3 f5 25.g3 [25.Ng3 cannot

undo what has already been done

25...f4+! Deflection: f2 26.Kxf4 Rxf2+

27.Ke3 Rgx2] 25...g5 [25...Rc1 might
be the shorter path 26.Ra4 a5

27.Nd2] 26.f4 gxf4+ [26...Rc1!?]

seems even better 27.Ke2 gxf4

28.gxf4 Re1+ 29.Kf2] 27.gxf4 Kf7

28.Kd3 Rg2 [Better is 28...Rf2!?]

makes it even easier for Black 29.Ra4

Bd6 30.Ra1 Rxb2 31.Kc3] 29.Ke3

Bd6 30.Kf3 [30.h3 hardly improves

anything 30...Kf6] 30...Rg4 [D]

(p.6) 31.h3 Rxf4+ 32.Kg2 Rxd4

33.Ra4 f4 [D] (p.6) Olin - I had

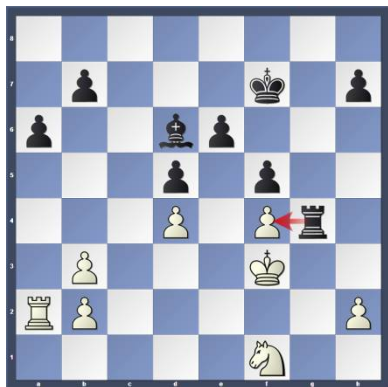
trouble reading score sheet at this

point. [Better is 33...Rd3 might be

the shorter path.] 34.Nd2?? a5

(Text cont. p.6)

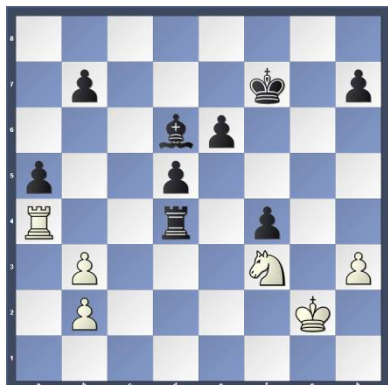
Position after 30...Rg4



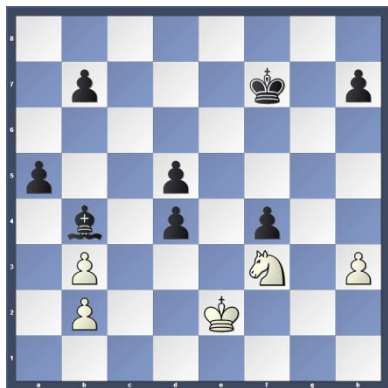
Position after 33...f4 (From p.5)



(Cont. from p.5) 35.Nf3?? [D]



[Better is 35.Rxd4 and White gets the upper hand 35...Ke7 36.Kf3] 35...Rd1
36.Nh4 e5 37.Kf3 Rd4 [Better is 37...Rd3+ makes sure everything is clear
38.Kg2 Rg3+ 39.Kf2 Rxb3 40.Rxa5 Rxb2+
41.Kf1 Ke6] 38.Rxd4 exd4 39.Ke2 Bb4
40.Nf3 [D]



(Text cont. next col.)

(Cont. from prev. col.) 40...Ke6
41.Kd1 Kf5 42.Ne5 Kg5 [D]



0-1

More pictures from the IM Igor Khmelnitsky Simul



Handshake with Joe Iacovitti
before Move #1



Harry Hartman



Jack Lieberman, Advait
Kollipara, Alex Wang, Roman
Goldovsky



Matt Martello, Andrew Neno,
George Murphy

This concludes this issue. More
games in next issue.

Other places to play chess:

The below are for friendly off
hand non-rated games (clocks
optional). Bring chess set.

Monday evenings

about 6:00 to 10:00 PM,
"Starbucks," 10 North Main
Street, Doylestown

Tuesday mornings

9:30 AM to Noon at the
Pennridge Community Senior
Center in Silverdale. Located
on route 113 near route 152

Wednesday evenings

7:30 to 10:00 PM, "Christ Re-
formed Church at Indian
Creek" located at 171 Church
Road (intersection with
Cowpath Road), Telford, PA.

**Allentown Center City Chess Club
Offer** (from Eric C. Johnson): "For
any of our events -- If three or
more Lansdale players carpool
together -- the designated driver
plays for free!"

<http://www.freewebs.com/allentowncentercitychessclub>