

~ En Passant ~

Newsletter of the North Penn Chess Club, Lansdale, PA – Fall 2017, Part 3

E. Olin Mastin, Editor

North Penn Chess Club

500 West Main Street

Lansdale, PA 19446

www.northpennchessclub.org

(215) 699-8418 donfunk@msn.com

This issue features August /

September games.

The purpose of these newsletters is to include as many games as possible by NPCC players irregardless of the strength of the participants. Thanks to all for submitting games!

Games from the NPCC 2017

August Quads Tournament:

Round: 3

Submitted by Ben with selected Fritz/Stockfish comments [shown thusly].

White: Gary Stevens (1200)

Black: Ben Solomon (926)

Date: 8/25/2017

[D00: 1 d4 d5: Unusual lines] 1.d4 d5

2.e3 Nf6 3.f4 Bf5 4.Nf3 Nc6 5.Ne5

[D]



5...Nb4 6.Nd3 e6 7.Bd2 a5 8.a3 Nxd3+ 9.cxd3 a4 10.h3 10...c5 11.g4 Bg6 [D]



12.g5 [This push gains space] [Better is 12.dxc5!? should be investigated (Text cont. next col.)]

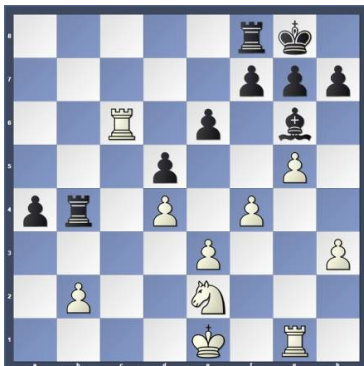
(Cont. from prev.col.) more closely 12...Bxc5 13.h4=] 12...Nh5 13.Be2 [Better is 13.dxc5!? Ng3 14.d4 Nxh1 15.Bb5+ Ke7 16.Qg4] 13...Ng3++ 14.Rg1 Nxe2 15.Qxe2 Qc7 16.dxc5 Bxc5 17.d4 Bd6 18.Nc3 Qb6 19.Qb5+ [D]



19...Qc6 20.Qxc6+ [20.Rc1!? must be considered 20...Qxb5 21.Nxb5] 20...bxc6 21.Ne2 Rb8 22.Bb4 Bxb4+ 23.axb4 Rxb4 [D]

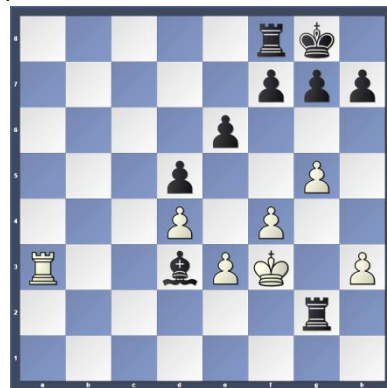


24.Rc1? [Better is 24.Nc3!? h6 25.Rxa4 Rxa4 26.Nxa4 hxg5 27.fxg5 Rxh3 28.Kf2] 24...0-0 [Better is 24...Rxb2 might be the shorter path 25.Ra1 Bd3] 25.Rxc6?? [D]

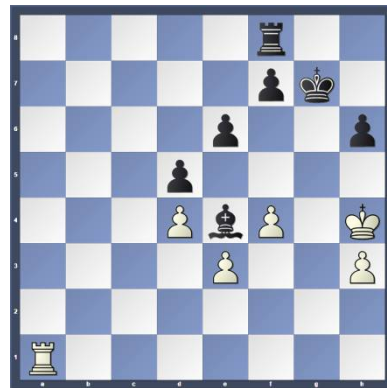


[A blunder in a bad position.] [25.Nc3] 25...Rxb2 26.Kf2 a3 27.Ra6 Bd3 28.Rxa3 Rxe2+ 29.Kf3 Rd2 30.Rg2 Rxg2 [D] (Next col.) (Text cont. next col.)

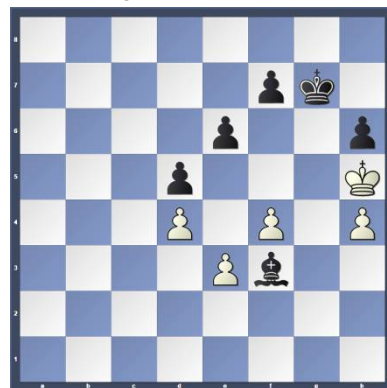
Position after 30...Rxg2 (From prev. col.)



(Cont. from prev.col.) 31.Kxg2 Be4+ 32.Kg3 h6 33.gxh6 [33.h4 does not help much 33...Rc8] 33...gxh6 34.Kh4 Kg7 35.Ra1 [D]



35...Rg8 36.Rg1+ Kh7 37.Rxg8 [37.Ra1 is one last hope.] 37...Kxg8 38.Kh5 Kg7 39.h4 Bf3# [D]



0-1

Games from the NPCC 2017 Membership Drive

Tournament:

Round: 2 (Text cont. p.2)

(Cont. from p.1) Submitted by Terance with his comments and selected Fritz/Komodo comments [shown thusly].

White: Terance Hall (1884)

Black: Steve Atlee (1199)

Date: 9/8/2017

[D53: Queen's Gambit Declined: 4 Bg5 Be7: Early deviations] **1.d4 d5 2.c4 e6 3.Nc3 b6 4.Nf3 Nf6 5.Bg5 Be7 6.e3 Ba6 [D]**



(Terance - This sharp move caused me to think of the best way to handle the attack on the c-pawn. Best was to castle first as Qa4+ can cause some tactic on the white squares. First thought was Bxf6 then cxd5 or Qa4+. I decided on Ne5 to put a hold on the light squares before taking the Knight on f6. With my Knight on e5 and Black's Bishop on a6 the Knight does not have a good square in which to develop.) **7.Ne5 [D]**



[Komodo 11: 7.cxd5 Bxf1 8.Bxf6 Bxf6 9.Kxf1 exd5 10.Rc1 0-0 11.g3 Nc6 12.Kg2 Ne7 etc...] **7...h6?** (Terance - Bad move as 0-0 or Bb7 was necessary.) **8.Bh4** (Terance - Now was the time to execute my plan by cxd5 which by the Komodo engine gave a winning advantage.) [8.cxd5! hxg5 9.dxe6 fxe6 10.Bxa6 Nxa6 11.Qa4+ Nd7 12.Qxa6 Nxe5 13.dxe5 c6] **8...Nbd7? [D]** (Next col.) (Terance - Castling, Bb7, or dxc4 had to be played.) [Better is 8...0-0!?= is interesting] **9.Bxf6** (Terance - Stronger was Nc6.) [Komodo 11: 9.Nc6 Qc8 10.cxd5 Bxf1 11.Nxe7 Kxe7 12.Rxf1 c5 13.dxe6 fxe6 14.e4 cxd4, etc...] **9...Bxf6 10.Nc6 [D]** (Next col.) (Text cont. next col.)

Position after 8...Nbd7? (From prev. col.)



Position after 10.Nc6 (From prev. col.)



Cont. from prev. col.) **10...Qc8 11.Qa4 Qb7?** (Terance - This does not solve anything. Best was 0-0, or dxc4.) [Better is 11...dxc4!? should not be overlooked 12.Bxc4 Bxc4 13.Qxc4 Qb7] **12.cxd5 [D]**



(Terance - My intuition was to play this now which was correct.)

12...Nc5?? [D]



(Text cont. next col.)

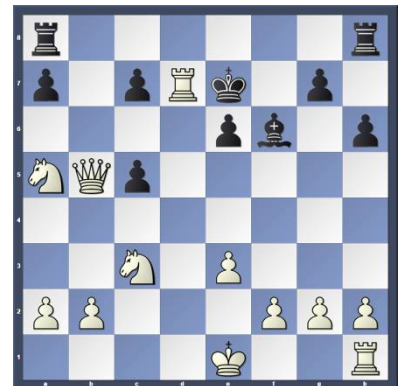
(Cont. from prev. col.) [The pressure is too much, Black crumbles.] (Terance - Here Steve played this, thinking that he would have counter play on the b-file.) [Better is 12...Bxf1 13.Rxf1 0-0 14.dxe6 fxe6±] **13.dxc5 bxc5** [13...Bxf1 hoping against hope 14.Na5+ b5 15.Nxb7 bxa4 16.Rxf1 a3] **14.Na5+ [D]**



(Terance - Now Black loses his Queen.) **14...Bb5 15.Bxb5+ Qxb5 16.Qxb5+ [D]**



16...Kd8 17.dxe6 fxe6 18.Rd1+ Ke7 19.Rd7+ [D]

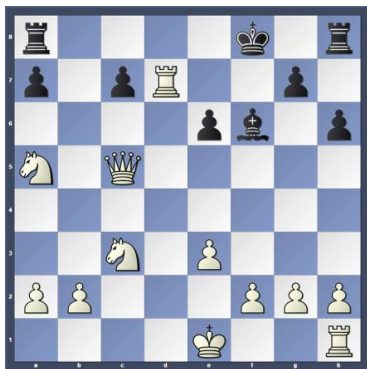


(Terance - Here Steve had written down the move he thought I would play which was Qd7. I always try to make the strongest moves. Qd7 did not have the best follow up for the quickest win whereas Rd7 does.) **19...Kf8 20.Qxc5+ [D]** (p.3) **1-0**

Round: 1

Submitted by Bill with selected Fritz comments [shown thusly]. (Text cont. p.3)

Position after 20.Qxc5+ (From p.2.)



(Cont. from p.2)

White: Sonja Mahnkopf (8) (unr)

Black: Bill Campion (1502)

Date: 9/8/2017

[A00: Irregular Openings] 1.f3 d5 2.g3 b6 3.Bh3 Bb7 4.b3 e6 5.c3 Nf6 6.Ba3 Bd6 7.e3 0-0 8.e4? [D]



[Better is 8.Bxd6 and White can hope to survive 8...Qxd6 9.Ne2] 8...dxe4 9.f4?? [Leading to a quick end.] [9.Bg2 Bxa3 10.Nxa3 Nbd7] 9...Nc6 [Better is 9...Bxa3 seems even better 10.Nxa3 e3 11.Nf3 exd2+ 12.Qxd2 Bxf3 13.Qxd8 Rxd8 14.0-0] 10.c4 Re8 [Better is 10...Bxa3 makes it even easier for Black 11.Nxa3 Nb4] 11.Nc3 11...Bxa3 12.Na4 [D]



12...Nb4 13.Ne2 e3! [Discovered attack: e4, Bb7xh1] [13...Nd3+ 1[14.0-0 the only chance to get some counterplay 14...Qxd2 15.Bg2 Bxg2 16.Kxg2] 14.dxe3 [D] (Next col.) 14...Bxh1 15.Qd4 Nc2+ [D] 4.Kf1] 16.Kd2 Nxd4 17.Nxd4 c5 18.Kc3 cxd4+ (Text cont. next col.)

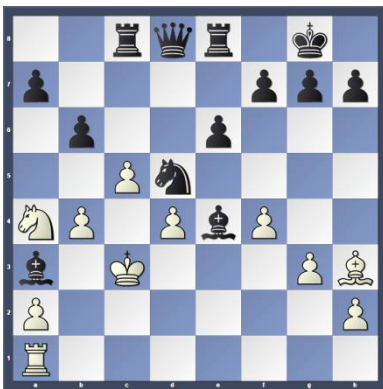
Position after 14.dxe3 (From prev. col.)



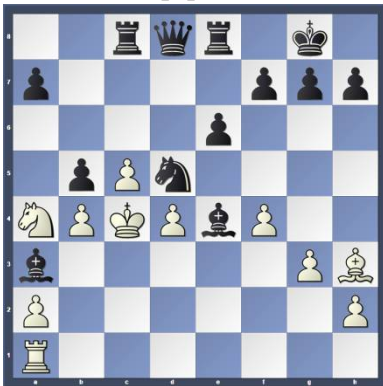
Position after 15...Nc2+ (From prev. col.)



(Cont. from prev. col.) 19.exd4 Be4 20.c5 Rc8 21.b4 Nd5+ [D]



22.Kc4 b5+! [D]



[Deflection: d3] 23.Kb3 [23.Kxb5 Bd3# Mate attack Decoy Deflection] 23...Bxb4 24.Nb2 Qa5 25.Nd1 Qa3# [D] (Next col.) (Text cont. next col.)

Position after 25...Qa3# (From prev. col.)



(Cont. from prev. col.) 0-1

Round: 1

Submitted by Olin with my comments and selected Fritz/Komodo comments [shown thusly].

White: Ben Solomon (926)

Black: Olin Mastin (1510)

Date: 9/8/2017

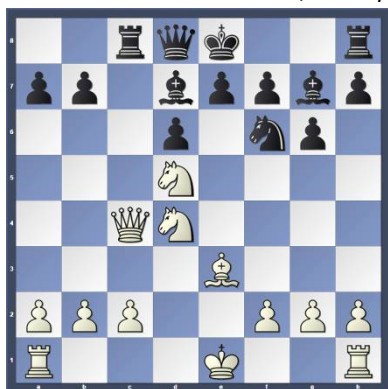
[B34: Sicilian: Accelerated Dragon with 5 Nc3: sidelines] 1.e4 c5 2.Nf3 Nc6 3.Nc3 g6 4.d4 cxd4 5.Nxd4 Bg7 6.Be3 d6 7.Bb5 Bd7 8.Qd2 Nf6 9.Nd5?? [D]



[White has let it slip away] (Olin - Right idea but a move too late!)

9...Nxe4 10.Qd3 Nf6 [Better is 10...Nc5 11.Qd1 0-0] 11.Bc4?? [Causes further problems for White.] [11.Nxf6+!? Bxf6 12.c3] 11...Ne5 [Better is 11...Nxd5 finishes off the opponent 12.Nxc6 Bxc6 13.Bxd5 Qa5+ 14.c3 Qxd5 15.Qxd5 Bxd5] 12.Qb3 [12.Nxf6+ Bxf6 13.Qb3 Nxc4 14.Qxc4 0-0] 12...Nxc4 [12...Nxd5 13.Bxd5 e6 14.Bf3 Qa5+ 15.c3 Nxf3+ 16.Nxf3] 13.Qxc4 [13.Nxf6+ Bxf6 14.Qxc4 0-0] 13...Rc8 [D] (p.4) [13...Qa5+ 14.Nc3] 14.Qb3? [Better is 14.Nxf6+!? Bxf6 15.Qe2] 14...Qa5+ 15.Nc3 Ne4 [D] (p.4) 16.0-0-0?? [Simply worsens the situation.] [16.Qd5 Qxd5 17.Nxd5] (Text cont. p.4)

Position after 13...Rc8 (From p.3)



Position after 15...Ne4 (From p.3)



(Cont. from p.3) 16...Nxc3 17.Rd3 Nxa2+ 18.Kb1 Nb4 19.Qa3 [D]



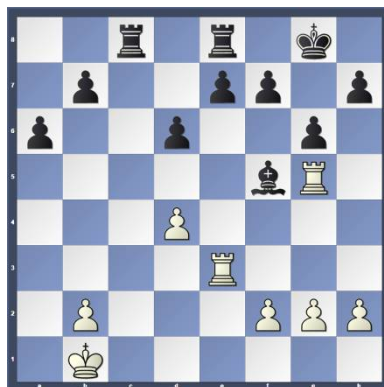
[19.Bd2 is the last straw 19...Qa6 20.Bxb4] 19...Qxa3 [19...Ba4 [D]



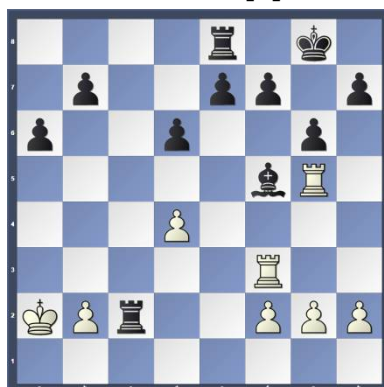
(Analysis Diagram)

Seems even better 20.Bd2 Bxd4 21.Rxd4 Bxc2+ 22.Ka1 Qxa3+ 23.bxa3; Komodo 11: 23...Nd3 24.Ka2 f6 25.f4 b6 26.Rg1 Kd7 27.Rf1 Nc5 28.h4 f5 29.Kb2 Be4 30.Rfd1 Ne6] 20.Rxa3 a6 21.c3 [21.Rc1 cannot change destiny 21...0-0] 21...Nd5 (Text cont. next col.)

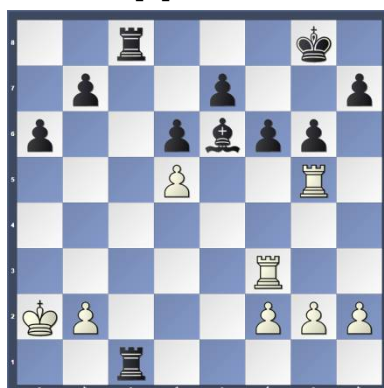
(Cont. from prev. col.) [Better is 21...e5!? keeps an even firmer grip 22.Ne6 Bxe6 23.cxb4] 22.Re1 0-0 23.Ra5 Nxe3 24.Rxe3 Rfe8 [Better is 24...e5 keeps an even firmer grip 25.Nf3] 25.Rg5 Bxd4 [25...Bh6 might be the shorter path 26.Rgg3 Bxe3 27.fxe3] 26.cxd4 Bf5+ [D]



27.Ka2 Rc2 28.Rf3 [D]

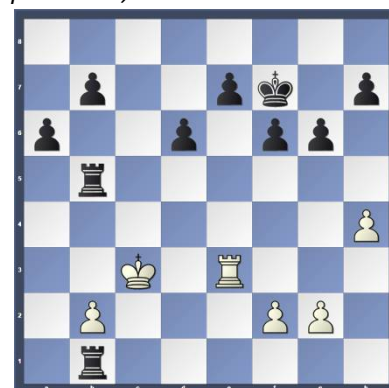


(Olin - RxBf5 is threatened.) 28...Be6+ [28...Be4 seems even better 29.Rf4 f6 30.Rg3 Bd5+ 31.Ka3; 28...h6 29.Rgxf5] 29.Kb1 Rec8 30.d5 Rc1+ [30...f6 and Black can already relax 31.Rxg6+ hxxg6 32.dxe6] 31.Ka2 f6 [D]



32.Rgg3 [32.Rxg6+ no good, but what else? 32...hxxg6 33.dxe6] 32...Bxd5+ 33.Ka3 Bxf3 [33...Ra1+ 34.Kb4 Rc4+ 35.Kb3 Rc5+ 36.Kb4 a5#] 34.Rxf3 [36...Kf7 makes it even easier for Black R8c5 35.Re3 Ra1+ 36.Kb4 Rb5+ 37.Kb3 Rb5+ 38.Kc2] 37.Kc3 Kf7 38.h4 Rb1 [D] (Next col.) (Text cont. next col.)

Position after 38...Rb1 (From prev. col.)



(Cont. from prev. col.) (Olin - Komodo gives 38...Rc1+ as the way to go.) [38...Rb1 39.Re2 Rc1+ 40.Kd4 Rb4+ 41.Kd3 Rb3+ 42.Kd2 Rxb2+ 43.Ke3 Rxe2+ 44.Kxe2 a5 45.Kd2 Rc5 46.h5 gxh5 47.g4 a4 48.Ke2 a3; Komodo 11: 38...Rc1+ 39.Kd2 Rb1 40.b4 R5xb4 41.Rc3 R1b2+ 42.Kc1 Rxf2 43.g3 Rb5 44.Rd3 h5 45.Ra3 Rfb2 46.Ra4 Rb1+ 47.Kc2 R5b2+ 48.Kc3 Rb3+ 49.Kc2 R1b2+ 50.Kc1 Rf2 51.Rf4 Rxf4 52.gxf4] 0-1

Round: 2

Submitted by Steve with selected Fritz/Komodo comments [shown thusly].

White: Steve Atlee (1199)

Black: Ben Solomon (926)

Date: 9/15/2017

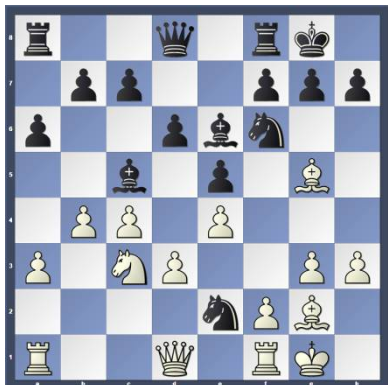
[A25: English Opening vs. King's Indian with ...Nc6 but without early d3]

1.c4 e5 2.Nc3 Nc6 3.g3 Nf6 4.Bg2 Bc5 5.h3 d6 6.e4 Be6 7.d3 [D]



7...Bd4 [A comfortable square for the black bishop.] 8.Nge2 [8.Nf3 Bc5=] 8...0-0 [8...Bc5 9.0-0=] 9.0-0 [9.Nxd4 Nxd4 10.f4 c5=] 9...a6 [9...Bc5 10.Nd5=] 10.Bg5 [10.Nxd4 Nxd4 11.Ne2 b5=] 10...Bc5 [10...h6 11.Bd2=] 11.a3 [11.Nd5 Bxd5 12.cxd5 Nd4=] 11...Nd4 [11...h6 12.Be3=] 12.b4 [12.Rc1 h6 13.Be3 Re8=] 12...Nxe2+ [D] (p.5) (Text cont. p.5)

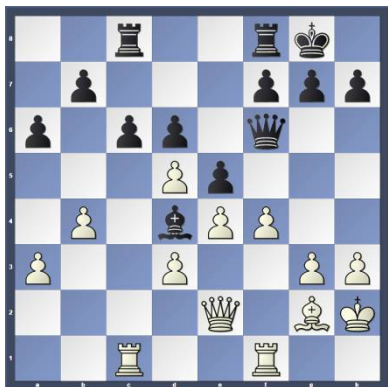
Position after 12...Nxe2+ (From p.4)



(Cont. from p.4) 13.Qxe2 Bd4 [The bishop dominates] 14.Rac1 Qd7 [14...c6 15.Qd2=] 15.Kh2 [15.Bxf6 gxf6 16.Kh2 a5] 15...Qe7 [15...Ne8=] 16.Bxf6 [16.Nd5!? is an interesting idea 16...Bxd5 17.cxd5] 16...Qxf6 17.Nd5 [D]

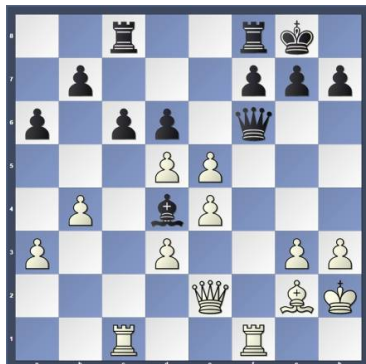


[17.Qd2 Ba7] 17...Bxd5 [17...Qd8 18.Ne3=] 18.cxd5 [Opposite colored bishops appeared] 18...Rac8 [18...Rfc8 19.f4=] 19.f4 [19.Bf3 c5] 19...c6 [D]

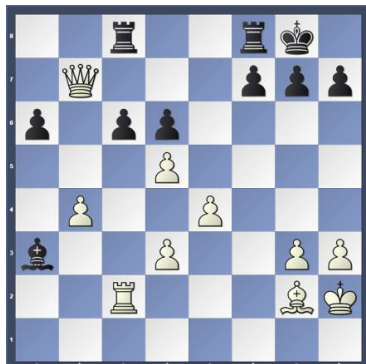


20.fxe5 [D] (Next col.) [Better is 20.dxc6 bxc6 21.fxe5 Qxe5 22.Rf5] 20...Bxe5?? [Forfeits the clear win.] [Better is 20...Qxe5 would save the game 21.dxc6 bxc6=] 21.Rxf6 Bxf6 22.Qe3 [22.e5 might be the shorter path 22...Bxe5 23.dxc6 bxc6 24.Rxc6 Rxc6 25.Bxc6 g6] 22...Be5 23.Qb6 [Better is 23.dxc6 and White can already relax 23...bxc6 24.d4 Bf6] 23...Bb2 24.Rc2 Bxa3 25.Qxb7 [D] (Next col.) (Text cont. next col.)

Position after 20.fxe5 (From prev. col.)



Position after 25.Qxb7 (From prev. col.)



Cont. from prev. col.) [25.Qxb7 c5 26.Qxa6] 1-0

Round: 2

Submitted by Terance with his comments (as edited) and selected Fritz/Komodo comments [shown thusly].

White: Ray Costanzo (1157)

Black: Terance Hall (1882)

Date: 9/15/2017

[D11: Slav Defense: 3 Nf3 sidelines and 3...Nf6 4. e3 Bg4] 1.d4 Nf6 2.g3 d5 3.c4 (Terance - dxc4 is playable also.) 3...c6 4.Bg2 Bf5 [D]



(Terance - 4...dxc4 would have been good move to play here, as it gives more options than the move played.) [Komodo 11: 4...dxc4 5.Nf3 g6 6.a4 Bg7 7.Na3 Na6 8.Nxc4 0-0 9.0-0 Be6 10.b3 Bd5, etc...] 5.Nc3 (Terance - (Text cont. next col.)

(Cont. from prev. col.) Yes, dxc4 is playable, but the move I played is fine and solid.) 5...e6 6.Nf3 h6 [D]



(Terance - I played this so if Nh4 I can preserve the Bishop by Bh7. Now I assessed the position and knew the struggle would start with White's Bf4 taking the dark squares and c5. Then the attack race starts with White shoving the b-pawn down and black attacking on the King's flank.) [Komodo 11: 6...Be7 7.0-0 0-0 8.Bf4 h6 9.Qb3 Qb6 10.c5 Qxb3 11.axb3 Nbd7 12.b4 a6, etc... ; Komodo 11: 6...Nbd7 7.Qb3 Qb6 8.c5 Qxb3 9.axb3 Be7 10.b4 0-0 11.Nh4 Bc2 12.0-0 a6, etc...] 7.Qb3 (Terance - Most testing move as it forces Black's hand.) 7...Qb6 8.c5 [D]



(Terance - Strongest move! At this point and onward. I was amazed that Ray, rated 1157, played understanding the position very well.) 8...Qxb3 (Terance - I was almost about to play Qc7, Bf4, Qc8 to keep the Queens on, which GM M. Sadler (2646) in year 2013 played to a draw. I decided to go with main lines.) 9.axb3 Nbd7 (Terance - I did not play a6 here as I thought if White played b4, then I will go a6 and weaken b6. Interesting is Nfd7 and Na6 which prevents b4.) 10.0-0 (Terance - I thought b4 should be played (Text cont. p.6)

(Cont. from p.5) now, which the Komodo 11 engine agreed.) **10...Be7 11.b4 [D]**



11...0-0 (Terance - Here I realized b5 can be played next. If a6, then b5 and I have to take back with cxb4 as my Rook is hanging. I decided if b5 is played next, I would rather have my Rook not hanging, so I castled.) **12.Bf4** (Terance - b5 was better.) [Komodo 11: 12.b5 a6 13.bxc6 bxc6 14.Ra2 Rfb8 15.Bf4 Rb7 16.h3 Bd8 17.g4 Bh7 18.Rfa1 a5, etc...] **12...Nh5 [D]**



(Terance - I played this to see where Ray would put his Bishop.) [Komodo 11: 12...Ne4 13.Nxe4 Bxe4 14.Bd2 a6 15.Bc3 Bg6 16.Nd2 Bf6 17.Nf3 Rad8 18.Ne5 Bf5, etc...] **13.Be5 f6** (Terance - Here a6 was good. I did not like the move Nxe5 allowing his Knight to go to e5. I did not realize that f6 gives White the advantage.) [13...Nxe5 14.dxe5 f6 15.h3] **14.Bd6!?** [D]



(Terance - The strongest move in the position as Bc7 Rfc8 and Bd6 (not Ba5? as b6! traps it.) (Text cont. next col.)

(Cont. from prev. col.) **14...Bxd6** (Terance - Best, as any other move gives White a huge advantage.) **15.cxd6 e5?!** (Terance - A questionable move. Best was Nb6. I was trying to create some activity on the Kingside.) [15...Nb6 16.Nd2 (Komodo 11: 16.h3 Be4 17.b5 Bxf3 18.Bxf3 g6 19.bxc6 bxc6 20.Bxh5 gxh5 21.Ra6 Rfd8 22.Rfa1 e5 23.dxe5 fxe5 24.Rxa7 Rxa7, etc...)] **16.e3** [16.b5!? Rfd8 17.Rfc1±] **16...g5 [D]**



(Terance - I had to create a square for my h5 Knight on which to go before getting trapped.) **17.b5** (Terance - Best with attack!)

17...Bd3? (Terance - I knew this was not the best, as it forces White to make good moves giving him a huge advantage down the c-file. Why did I play this instead of Ng7? Well, I was still amazed that Ray being rated 1157 was playing way above his rating. I thought he might misplay his next move and I would still have some chances for an advantage. I should know better to always play your best, not play down, underestimating your opponent. I have to say Ray is a great chess player. He is in his provisional rating, as I learned after the game.) [17...Kf7!? should be examined more closely; Komodo 11: 17...Ng7 18.bxc6 bxc6 19.b4 a6 20.dxe5 fxe5 21.Ra5 Rab8 22.Rc1 Bd3 23.Na4 g4, etc...] **18.bxc6! [D]**



(Text cont. next col.)

(Cont. from prev. col.) [White goes into the lead.] **18...bxc6** (Terance - Only move, as the other moves give White a huge, if not winning advantage.) [Komodo 11: Not 18...Bxf1?? 19.cxb7 Rab8 20.Kxf1 e4 21.Nd2 Nb6 22.Rxa7 Rf7 23.Nxd5 Nxd5 24.Nxe4 f5, etc...] **19.Rfc1 Rfb8? [D]**



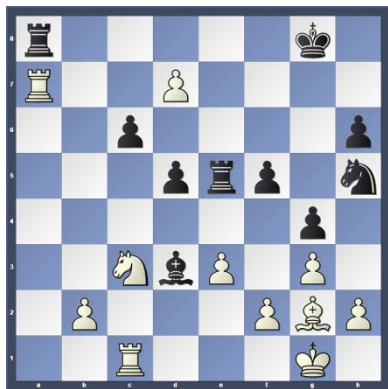
(Terance - I was a little frustrated here and wanted some immediate counter play. What was needed was to consolidate my position and try to hold on. I also saw Bh3 coming and thought I can scare White into protecting the b-pawn and can play f4 to block Bh3 as my Be3 holds the pawn. I forgot the e5 pawn hangs and the Knight can take it. Best is Ng7, and maybe Black can hold this position.) [Better is 19...Ng7±; Komodo 11: 20.Ne1 Bc4 21.Nb1 exd4 22.b3 Bb5 23.Na3 a6 24.exd4 Ne6 25.Nxb5 axb5 26.Rxa8 Rxa8, etc...] **20.Bh3 f5** [20...Rd8 21.Bxd7 Rxd7 22.dxe5] **21.Nxe5** (Terance - Much better than dxe5.) **21...Nxe5 22.dxe5 g4?!** (Terance - Forcing him to a better square.) [22...Kf7 cannot change what is in store for Black, i.e. 23.Na4 g4 24.Bf1 Bxf1 25.Kxf1; Komodo 11: 22...Ng7 23.Bg2 Kf8 24.Na4 Bb5 25.Nc5 Re8 26.Bf1 Bxf1 27.Kxf1 Kf7 28.d7 Red8, etc...] **23.Bg2 Re8?!** [D]



(Terance - Afraid of the pawns, in a hurry to capture one, (Text cont. p. 7)

(Cont. from p.6) provoking this move with my clock time ticking down. Kf8 was necessary to avoid Nxd5 cxd5 Bxd5 forking the King and Rook, which I saw moves ago thinking I had no choice but to go into this line for any chances!) [23...Bc4 is still a small chance 24.b3! touché!

24...Rxb3 25.Nxd5 Bxd5 26.Bxd5+ cxd5; Komodo 11: 27.d7 Rbb8 28.Rxa7 Rxa7 29.Rc8+ Kh7 30.d8Q Rxc8 31.Qxc8 Ng7 32.Qc5 Ra6, etc...; Komodo 11: 23...Bc4 24.Nb1 Kf7 25.Na3 Rb6 26.Nxc4 dxc4 27.Rxc4 Ke6 28.Rxc6 Rxc6 29.Bxc6 Rb8 30.Ra5 a6 31.Bd5+ Kxe5, etc...] **24.d7** [Better is 24.Nxd5!? and White can already relax. 24...cxd5 25.Bxd5+ Kf8] **24...Rxe5 25.Rxa7!! [D]**



[A powerful sacrifice which decides the game.] **25...Rd8** [25...Rxa7 26.d8Q+ Promotion] **26.Rca1** [Better is 26.Nxd5 secures victory 26...Be4 27.Nb6 Kf7 28.Bxe4 fxe4 29.Rxc6 Ng7] **26...Re7** [26...Kf7 does not help much 27.Na4 Nf6 28.Nc5] **27.Na4 [D]**



(Terance -: White finds the best move to win the game.) **27...Bb5 28.Nc5 Kf7 29.Bf1** [Better is 29.Ra8!? might be the shorter path 29...Rdxd7 30.Nxd7 Rxd7] **29...Nf6 30.Bxb5 cxb5 31.Rb7** [31.R7a6 seems even better 31...d4 32.exd4 h5] **31...Nxd7? [D]** (Next col.) [31...Ne4 32.Nd3 Nf6 33.Ra6 Rxd7 34.Rxb5] **32.Rxb5** [Better is 32.Raa7 ends the debate 32...Nxc5 33.Rxe7+ Kf6 34.Rec7] **32...Nxc5 [D]** (Next col.) (Text cont. next col.)

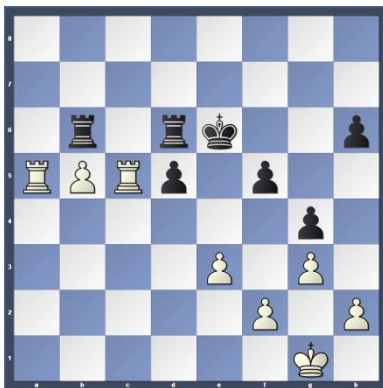
Position after 31...Nxd7? (From prev. col.)



Position after 32...Nxc5 (From prev. col.)



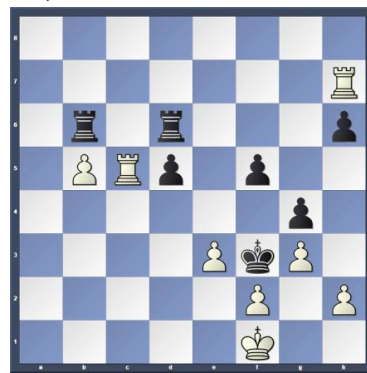
(Cont. from prev. col.) (Terance - Both engines, Komodo 11 and Stockfish 8, favored this exchange instead of going Ne5. I also played this as I thought it was my best chance to draw the game.) **33.Rxc5 Rd6 34.Raa5 Ke6 35.b4 Rb7 36.b5 Rbb6 [D]**



[36...h5 37.Kg2; Komodo 11: 36...Rdb6 37.Ra6 Ke5 38.Rc8 h5 39.Re8+ Kf6 40.Rh8 Kg7 41.Rxh5 Kg6 42.Rh8 Rxa6, etc...] **37.Ra7 Ke5** [37...Rd8 38.Rh7 Ke5 39.Kg2] **38.Rh7** [38.f4+ keeps an even firmer grip 38...Kf6] **38...Ke4** [38...Rd8 39.Kg2] **39.Kf1 Kf3 [D]** (Next col.)

(Terance - I was in bad time pressure and made this bad move thinking I could trick him into a mate; (Text cont. next col.)

Position after 39...Kf3 (From prev. col.)



(Cont. from prev. col.) however, he beat me to it.) [39...Ke5 40.Ke2] **40.Re7 Rd8** [40...Re6 41.Rxe6 Rxe6 42.Rxd5 Ke4 43.Rd4+ Ke5 44.f4+ gxf3] **41.Rc3 [D]**



[41.Rc3 Rc8 42.Rxc8 Rxb5 43.Rc1+-; 41.e4 Rc8 42.exd5 f4 43.Rxc8 Re6 44.Rxe6 fxe6 45.Rf8#] **1-0**

Round: 3

Submitted by Olin with selected Fritz/Komodo comments [shown thusly].

White: Jacob Lee Age 8 (1069)

Black: Olin Mastin (1510)

Date: 9/22/2017

[B77: Sicilian Dragon: Yugoslav Attack, 9 Bc4 sidelines] **1.e4 c5 2.Nf3 Nc6 3.d4 cxd4 4.Nxd4 g6 5.Nc3 d6 6.Be3 Bg7 7.f3 Nf6 8.Qd2 0-0 9.Bc4 [D]**



9...e6 10.0-0-0 a6?? [D] (p.8) [Better is 10...d5 would keep Black alive 11.exd5 Na5] **11.Nxc6 bxc6 12.Qxd6 [D]** (p.8) (Text cont. p.8)

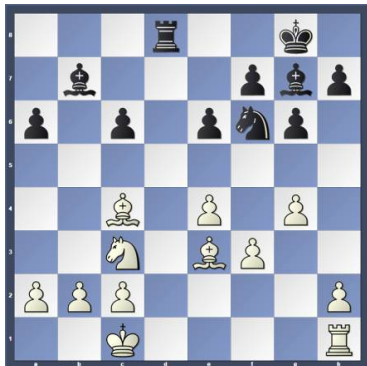
Position after 10...a6?? (From p.7)



Position after 12.Qxd6 (From p.7)



(Cont. from p.7) **12...Qxd6** [12...Nd7 13.Qxc6 Rb8 14.Bb3] **13.Rxd6 Bb7** [13...Re8 14.Rxc6 Rd8 15.Be2] **14.g4** [14.Na4!? keeps an even firmer grip 14...Rfd8 15.Rxd8+ Rxd8] **14...Rfd8** [14...Rfe8 15.Bb3] **15.Rxd8+** [15.Rhd1 keeps an even firmer grip 15...Rxd6 16.Rxd6 Re8] **15...Rxd8** [D]



16.Bg5 [16.Na4 Nd7] **16...h6** **17.Bh4 g5** **18.Bg3 h5** [D]



(Text cont. next col.)

(Cont. from prev. col.) [18...Kf8 19.Bc7 Rc8 20.Bd6+ Kg8 21.Rd1] **19.gxh5 Nxh5** **20.Na4** [Better is 20.Bf2!?] **20...Nxg3±** **21.hxg3 Bd4** **22.c3** [22.b4 Kg7±] **22...Be3+** [D]



23.Kb1 Rd2 [23...Kg7 24.b4 c5 25.Re1±] **24.Re1** [24.b4 c5 25.Nxc5 Bxc5 26.bxc5 g4±] **24...Bf2** [D]



25.Rf1 [25.Rh1 Be3] **25...Be3** **26.Re1** [26.b4 Bc8±] **26...Bf2** **27.Rf1** [Twofold repetition] [27.Rh1 Be3] **27...Be3** [27...g4!?] **28.Re1** [Better is 28.b4!?±] **28...Bf2** [D]



½-½

This concludes this issue. More games in next issue.

Other places to play chess:

The below are for friendly off hand non-rated games (clocks optional). Bring chess set.

Monday evenings:

About 6:00 to 10:00 PM, "Starbucks," 10 North Main Street, Doylestown

Tuesday mornings :

9:30 AM to Noon at the Pennridge Community Senior Center in Silverdale. Located on route 113 near route 152

Wednesday evenings :

7:30 to 10:00 PM, "Christ Reformed Church at Indian Creek" located at 171 Church Road (intersection with Cowpath Road), Telford, PA.

Weekdays:

8:00 to 4:00 Daily, Senior Center, 312 Alumni Ave, Harleysville, PA

Friday Mornings:

10:00 AM up to 2:00 PM
Indian Valley Public Library, 100 E. Church Ave, Telford, PA

Allentown Center City Chess Club

Offer (from Eric C. Johnson): "For any of our events -- If three or more Lansdale players carpool together -- the designated driver plays for free!"

<http://www.freewebs.com/allentowncentercitychessclub>