

~ En Passant ~

Newsletter of the North Penn Chess Club of Lansdale, Fall 2009

North Penn Chess Club
500 West Main Street
Lansdale, PA 19446
npennchessclub.org
(215) 699-8418
donfunk@msn.com

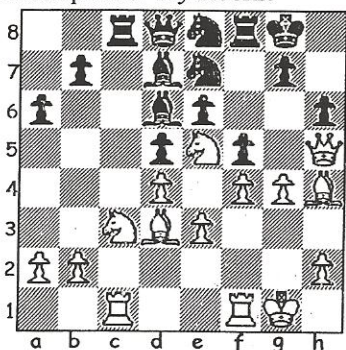
News & Notes by Eric Funk, Editor

Many of our club members and newsletter readers already play in the Westchester Chess Club's 1st Saturday Quads and the Allentown Chess Club's 2nd Saturday Quads. After a bit of a hiatus, the NPCC's 3rd Saturday Quads are back. See the attached flyer and the NPCC's Fall/Winter schedule of events.

Congratulations to Nigel Mitchell, the NPCC's first ever Touch-Move Blitz Champion. Nigel prevailed after a furious three game play-off with David Xu. The annotated game below is from one of Nigel's more recent tournament games.

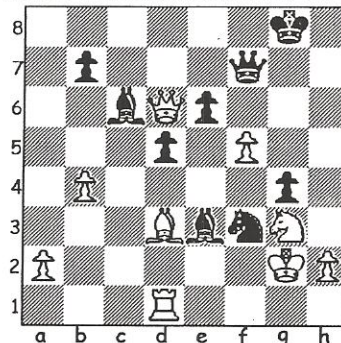
Mitchell, Nigel (1963) – Kampia, Bob (1834) [D13]
NPCC 06.12.2009 **Notes by Nigel Mitchell**

1.d4 d5 2.c4 c6 3.cxd5 cxd5 4.Nc3 Nf6 5.Nf3 h6 6.e3 a6 7.Bd3 e6 8.Ne5 Not the best move. Better was O-O or Bd2. For example: 8.0-0 Bd6 9.Bd2 Nc6 10.Rc1 0-0. 8...Bd6 9.f4 I wanted to open the f-file as soon as possible. 9...0-0 10.0-0 Bd7 11.Bd2 Nc6 12.Rc1 Rc8 13.Be1 Now I'm bringing a piece to the K-side to remove the Knight on f6. 13...Ne7 14.Bh4 Ne8 15.Qh5 f5 16.g4 [D] I think I need to continue to be aggressive. My pieces are close to the enemy King so now I need to get lines open for my Rooks.



16...Nf6 17.Bxf6 That was the reason for getting the Bishop over to the K-side. 17...Rxf6 18.g5 Be8 Certainly the best move in this position. 19.Qh3 hxg5 20.fxg5 Bxe5 This surprised me completely. I never looked at this continuation and Bob has beaten me before with moves like this. I had expected 20...Rf8 21.Nf3 Ng6 22.Rf2. 21.gxf6 Bxf6 22.Qg3 g5 23.Ne2 Ng6 24.Rxc8 Qxc8 25.Rc1 Be6 It is still tough to get through Black's defenses, especially since my King is fairly open. So I

decided to switch to the Q-side. 26.Qd6 Qe8?! 27.Bxa6 I've just stolen a very important pawn. 27...f4 28.Bd3 Nh4 28...Bg7 looks better. 29.exf4 Nf3+ 30.Kg2 Better was 30.Kh1 g4 31.Rf1. 30...g4 31.Ng3 Again not the best move. These types of positions are so difficult to unravel, but that's the joy of chess. Better was 31.h3. 31...Bxd4 32.b4 Be3 33.Rd1 Qf7 34.f5 [D]



Better was 34.Qd8+ Kg7 35.b5 Be8. Black should now play 34... Nh4+. 34...exf5 35.Qb8+ Qf8 36.Qxf8+ I'm happy to get rid of the Queens; this should make my task easier. 36...Kxf8 37.Nxf5 d4 38.Kg3 Ne5 39.Be2 Nf3 40.h3 Now I'm thinking it's just a matter of style to finish this game. I could have also played 40.Nxe3 dxe3 41.b5 Be8 42.Kxg4 Ne5+. 40...Ng5 41.Nxe3 dxe3 42.hxg4 42.Kxg4 would have been better. 42...Ne4+ 43.Kf4 Nc3 44.Kxe3 I felt that even if Black captured my Rook, I should still have no difficulty with the endgame. 44...Nxa2 45.b5 Be8 46.Kd4 I'm trying to trap the Knight. 46...Ke7 47.Be4 Bf7? This is an error... 48.Re1+ and Black resigns because he drops a piece. 1-0.

There is a Bounty on Eric Funk's King!

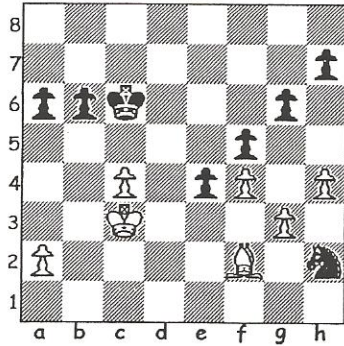
In a supreme act of self-confidence (or utter foolishness) I am offering a \$20.00 cash bounty to any and every player age 17 or younger who can defeat me in a rated game before January 1st of 2010. To sweeten the pot I'll even publish the game in our next newsletter along with any notes you want to include. Happy hunting.

Funk, Eric (2051) – Yang, Chris (1752)
NPCC 05.16.2009

1.e4 c5 2.Nc3 e6 3.Bc4 Nc6 4.f4 Nge7 5.e5 Ng6 6.d3 d6 7.exd6 Bxd6 8.Nge2 e5 This seems to be overly ambitious. 9.0-0 White threatens 10.Bxf7+ Kxf7 11.fxe5+ etc. Black should probably continue with 9... 0-0, though 10.f5 is unpleasant. 9... exf4 10.Nxf4 Bxf4 11.Bxf4 Qd4+ 12.Kh1 Chris suddenly realized that after the intended 12... Nxf4 there follows 13.Nb5 and he cannot keep the piece. 12... 0-0 Relatively best. 13.Nb5 Qd8 14.Bd6 Nce7 15.Bxc5 b6 16.Qf3 Be6 17.Bxe7 Qxe7 18.Rae1?! A pseudo-active move which helps Black. 18... Qc5 19.Qe3 Qxe3 20.Rxe3 Bxc4 21.dxc4 Rfd8 22.Rd3 Re8? A rare tactical slip which loses by force. It's especially a shame after Chris did

a fine job of improving his drawing chances over the last seven or eight moves. 23.Nc7 Rac8 24.Nxe8 Rxe8 25.Rd7 Ne5 26.Rxa7 Nxc4 27.h3 f6 28.b3 Ne5 29.c4 Rd8 1 – 0. Chris reached 1700 before his 11th birthday and it won't be long before I'm the one fighting for a draw against him.

Regam, Jessica (1580) – Funk, Eric (2051)
NPCC 05.16.2009



Jessica's rating has gone up by more than a hundred points in the short time since this game was played. She is a dangerous and rapidly improving young player.

52... Ng4 53.Be1 Kc5 Jessica's hanging in there, but the extra passed pawn is too much to overcome. 54.a3 a5 55.Bd2 a4 56.Bc1 e3 57.Kd3 h5 58.cxb5 Kxb5 59.Bb2 Nf2+ 60.Ke2 Ne4 61.Kxe3 Kc4 and the Black King penetrates decisively. 0 – 1

Xu, David (1868) – Funk, Eric (2055)
NPCC 05.29.2009

1.e4 g6 2.d4 Bg7 3.Nc3 c5 4.Nge2 cxd4 5.Nxd4 Nc6 6.Be3 Nf6 7.Bc4 0-0 8.Bb3 Ng4 9.Qxg4 Nxd4 10.Qg3 d6 11.0-0 Nxb3 12.axb3 b6 13.f4 f5 14.e5 dxe5 15.fxe5 Be6 16.h4 Qc7 17.Bf4 Qc5+ 18.Kh1 Kh8 19.Rfd1 a5 It's been a dynamic game and there's still a lot of fight left. I like my position, but David is a tough and resourceful opponent and I only need a draw at this point in the tournament. So... ½ – ½. A solid game from a young man with still two more years of high school to go.

ALWAYS check the NPCC website: npennchessclub.org for any news updates, schedule changes, and additional tournament information.

Visitors are welcome anytime free of charge. To play a "pick up" game with one of our club members it is best to arrive between 7pm (when the first officers arrive) and 8pm (when the tournament games begin). To speak to a club officer about the North Penn Chess Club call Don Funk at 215-699-8418.

<u>Date</u>	<u>Day</u>	<u>Event</u>	<u>Time</u>	<u>Round</u>	<u>Type</u>	<u>Time Control</u>	<u>Entry Fees</u>
08.07.09	Fri.	August 4SS	8pm	1 of 4	Swiss	40/90 SD45	\$15/20
08.14.09	Fri.	August 4SS cont.	8pm	2 of 4	" "	" "	
08.15.09	Sat.	3 rd Saturday Quads	9:15am	1, 2, 3 of 3	Quad	G90	\$15/20, See Flyer!
08.21.09	Fri.	August 4SS cont.	8pm	3 of 4	Swiss	40/90 SD45	
08.28.09	Fri.	August 4SS cont.	8pm	4 of 4	" "	" "	
09.04.09	Fri.	CLOSED	FOR	LABOR	DAY	WEEKEND	
09.11.09	Fri.	Fall Membership Drive.	8pm	1 of 5	Swiss	40/90 SD45	\$24 Annual Dues
09.18.09	Fri.	Fall Memb. Drive cont.	8pm	2 of 5	" "	" "	
09.19.09	Sat.	3 rd Saturday Quads	9:15am	1, 2, 3 of 3	Quad	G90	\$15/20, See Flyer!
09.25.09	Fri.	Fall Memb. Drive cont.	8pm	3 of 5	Swiss	40/90 SD45	
10.02.09	Fri.	Fall Memb. Drive cont.	8pm	4 of 5	" "	" "	
10.09.09	Fri.	Fall Memb. Drive cont.	8pm	5 of 5	" "	" "	
10.16.09	Fri.	Friday Double Quads	8pm	1 of 6	Quad	40/80 SD 30	\$20/25
10.17.09	Sat.	3 rd Saturday Quads	9:15am	1, 2, 3, of 3	Quad	G90	\$15/20, See Flyer!
10.23.09	Fri.	Friday Dbl. Quad cont.	8pm	2 of 6	Quad	40/80 SD30	
10.30.09	Fri.	OPEN NIGHT	MAKE	UP	AND	SKITTLES	GAMES
11.06.09	Fri.	Friday Dbl. Quad cont.	8pm	3 of 6	Quad	40/80 SD30	
11.13.09	Fri.	Friday Dbl. Quad cont.	8pm	4 of 6	" "	" "	
11.20.09	Fri.	Friday Dbl. Quad cont.	8pm	5 of 6	" "	" "	
11.21.09	Sat.	3 rd Saturday Quads	9:15am	1, 2, 3, of 3	Quad	G90	\$15/20, See Flyer!
11.27.09	Fri.	CLOSED	FOR	THANKS	GIVING	WEEKEND	
12.04.09	Fri.	Friday Dbl. Quad cont.	8pm	6 of 6	Quad	40/80 SD30	
12.11.09	Fri.	Endgame Tournament	8pm	4 rounds	Swiss	G10	\$2/5, Educational
12.18.09	Fri.	December G30 Quad.	8pm	1, 2, 3 of 3	Quad	G30	\$10/15
12.19.09	Sat.	3 rd Saturday Quads	9:15am	1, 2, 3 of 3	Quad	G90	\$15/20, See Flyer!
12.25.09	Fri.	CLOSED	FOR		CHRISTMAS		
01.01.10	Fri.	CLOSED	FOR		NEW YEAR'S		
01.08.10	Fri.	The Winter Robin	8pm	1 of 7	Robin	40/100 SD45	\$25/35

SEE THE CLUB'S WEBSITE FOR THE REST OF THE FALL/WINTER SCHEDULE.