

# ~ En Passant ~

## Newsletter of the North Penn Chess Club of Lansdale, Spring 2013 Part 2

Olin Mastin, Editor

(Issued as revised 4/14/2013)\*

**North Penn Chess Club**

500 West Main Street

Lansdale, PA 19446

[www.northpennchessclub.org](http://www.northpennchessclub.org)

(215) 699-8418 [donfunk@msn.com](mailto:donfunk@msn.com)

**More games from the NPCC 2013**

**Winter Robin Tournament:**

**Round: 5**

Submitted by Bill with selected Fritz comments  
[shown thusly].

**White: Bill Campion (1653)**

**Black: Don Funk (1688)**

**Date: 3/1/2013**

1.d4 f5 2.Bg5 g6 3.h4 h6 4.Bf4 Bg7 \*5.Nf3 d6  
6.Nbd2 Nd7 \*7.c3 e5 8.dxe5 dxe5 9.Bh2 [D]

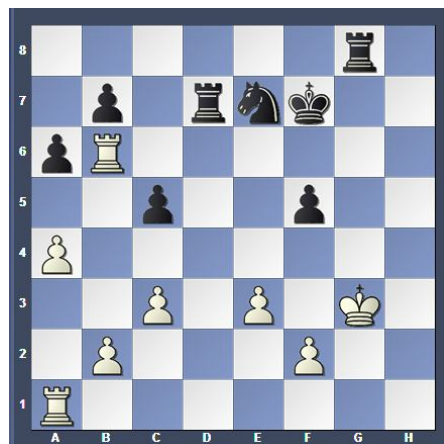


9...c5? [9...e4 would be a reprieve 10.Nd4 Bxd4  
11.cxd4 e3] 10.Nc4 Qe7 11.Nd6+ Kf8 12.Nc4  
[12.h5 and the result of the game is clear: White  
will win 12...g5 13.Nxf5] 12...Qe6 13.e3 Ne7  
14.Na3 Bf6 15.Bc4 Qb6 \*16.Bb5 a6?? [Throwing  
away the advantage. 16...e4 would bring relief  
17.Nd2 a6 18.Bxd7 Bxd7] 17.Bxd7 Bxd7 18.Nc4  
Qe6 19.Ncxe5 Bb5 20.a4 Bc6 21.O-O Kg7  
22.Qc2 Be4 23.Qe2 [D] (next col.) 23...g5  
24.hxg5?? [Hands over the advantage to the  
opponent. 24.Qc4 was necessary 24...Qxc4  
25.Nxc4] 24...hxg5 25.Nd3 Qc4 26.Be5? [Simply  
worsens the situation. 26.Rfd1 Rh7 \*27.Bg3]  
26...Bxd3 27.Bxf6+ Kxf6 28.Qd2 g4 29.Rfd1  
gxf3 30.Qxd3 Qxd3 31.Rxd3 fxf2 32.Rd6+ Kf7  
33.Kxg2 Rad8 34.Rb6 Rd7 35.Kg3 Rg8+ [D]  
(Next col.)

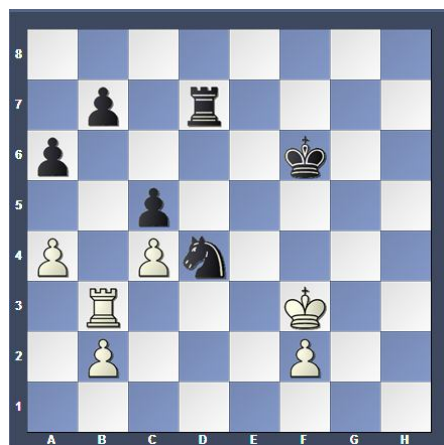
Position after 23.Qe2 (From prev. column)



Position after 35...Rg8+ (From prev. column)



[35...Nd5  
and Black wins 36.Rb3 c4 37.Rb4 Nxb4  
38.cxb4] 36.Kf3 Rg6 37.Rb3 Nc6 38.Rh1 Ke6  
39.Rh4 Ke5 40.Rb6 Ne7 41.Rb3 Nd5 42.e4  
fxe4+ 43.Rxe4+ Kf6 44.c4 Ne7 45.Rbe3 Nc6  
46.Rf4+ Kg5 47.Rf8 Rf6+ 48.Rxf6 Kxf6 49.Rb3  
Nd4+ [D]



0-1

## Winter Robin Round: 6

Submitted by Greg with his comments and selected Fritz comments [shown thusly].

White: Greg Sulat (1283)

Black: Rich Briggs (1499)

Date: 2/22/2013

(I was playing the Tarrasch Variation on the French.)

1.e4 e6 2.d4 d5 3.Nd2 c5 4.c3 Nc6 5.e5

(I thought the attack by black at move 5 was a bit premature. I was going to be down a pawn or two but would prevent his king from castling and better overall development.)

5...cxd4 6.cxd4 Nxd4 7.Qa4+ Nc6 8.Bb5 Bd7

9.Ndf3 Qc7 10.Ne2 [D]



10...Nxe5??

[Instead of simply winning the game: 10...Bb4+

11.Kf1 Nge7] 11.Nxe5+- Bxb5 12.Qxb5+ Kd8

(Mission accomplished. King is stuck in the middle and I have more active pieces developed than my opponent.) 13.Nf3 a6 14.Qa4 b5

15.Qg4 Nf6 16.Qh4 Be7 17.O-O Ne4 18.Qg4

Rg8? [18...Bf6] 19.Ng5 Nf6 [19...Bxg5 20.Bxg5+

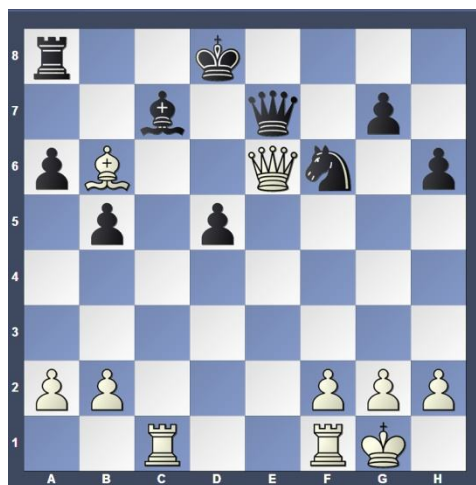
Ke8 21.Bf4] 20.Qf3 Bd6 [D]



21.Nxf7+??

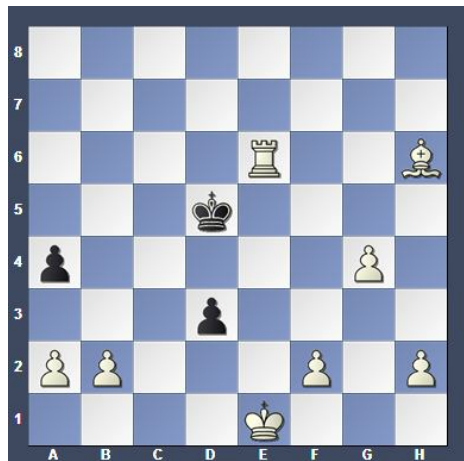
(A bit of a blunder... kind of. I was trying to take some of the impetus out of the Queen and Bishop battery he had and to open up the f-file for my Rook or Queen to begin (cont. next col.)

attacking on the f-file) [Simply marches past the door to victory. 21.Bf4 and White has reached his goal 21...Ke8 22.Rac1] 21...Qxf7 22.Be3 Qb7 (Not sure why he moved the queen to b7 – protect the pawn at \*d5?) 23.Rac1 Rf8 24.Qh3 h6? [24...e5 is the best option Black has 25.Ng3 g6] 25.Nd4 Re8? [25...Qd7 26.Nxe6+ Ke7 7.Nxf8 Qxh3 28.gxh3 Kxf8] 26.Nxe6+ (I thought that was a good move. He needs to watch a discovered check. If I can take the g7 pawn I can pick up the h-pawn and get my Bishop into the attack from that flank. Not sure if the Rook sac was necessary or not.) 26...Rxe6 27.Qxe6 Qe7 28.Bb6+ (Definitely winning a piece here. Not sure what the best choice would be for white.) 28...Bc7 [D]



29.Qxe7+

(Trade off the queens, trade rooks, pick off some pawns and try not to blunder in the end game!) [29.Bxc7+ and White has it in the bag 29...Ke8 30.Qc6+ Kf7 31.Qxa8 Qe8 32.Qxa6 Qe6 33.Qxb5 Qe8 34.Qxe8+ Nxe8] 29...Kxe7 30.Rxc7+ Kf8 31.Rfc1 Re8 32.Rc8 Kf7 33.Rxe8 Nxe8 34.Bd4 g6 35.Rc6 a5 36.Rc5 Ke6 37.Rxb5 a4 38.g4 Nc7 39.Rb6+ Kd7 40.Rxg6 Ne6 41.Be3 d4 42.Bxh6 d3 43.Kf1 Kd6 44.Ke1 Kd5 45.Rxe6! [D]



[Takes home the point: 45.Rxe6 Kxe6 46.h4] 1-0

### Winter Robin Round: 6

Submitted by Bill with Fritz comments [shown thusly].

White: Eric Funk (2067)

Black: Bill Campion (1683)

Date: 2/8/2013

1.c4 e5 2.Nc3 Nc6 3.Nf3 g6 4.d4 Bg7 5.d5 Na5  
6.e4 [D]



6...d6??

[Another step towards the grave. 6...b6] 7.b4 c6  
8.bxa5 cxd5 9.Nxd5 Nf6 10.Nxf6+ Bxf6 11.Bd2  
a6 12.Bb4 Be7 13.Bd3 Bg4 14.Qa4+ Bd7 15.Qa3  
Bg4 16.Rd1 Qc7 17.h3 Be6 18.O-O O-O 19.Nxe5!  
[D]



19...f5

[19...dxe5 20.Bxe7, deflection/pinning] 20.exf5  
Bxf5 21.Bxf5 Rxf5 22.Ng4 Bf8 23.Ne3 Rf4  
24.Nd5 Qxc4 25.Nxf4 [D]



[25... Qxf4

26.Bxd6] 1-0

### Winter Robin Round: 6

Submitted by Doug with his comments and  
selected Fritz comments [shown thusly].

White: Doug Kern (1861)

Black: Tony Durkin (1576)

Date: 2/20/2013

1. e4 c6 2. Nf3 d5 3. exd5 cxd5 4. Ne5  
(I like this variation because it's simple and  
aggressive, and gets black out of book.)  
4... Nf6 5. d4 a6 6. c3 Nbd7 7. Be2 e6 8.Nd2  
Nxe5 9. dxe5 Nd7 10. f4 g5 [D]



(I was

worried about 10... Bc5, but Fritz suggests  
Be7. I have to say I like Tony's aggressive  
style!) 11. Nf3 g4 12. Nd4 h5 13. Be3 Bh6  
(Threatening Nxe5) 14. Nc2 Nf8 15. Bd3  
(To prevent Ng6, or trade off the knight)  
15... Qh4+ 16. g3 Qd8 17.Qe2 (To protect the  
undefended Bd3, allow for Q-side castling, and  
to prepare f5 soon) 17... Bd7 18. Qf2 Bc6 19.  
Bb6 Qc8 20. Bd4 Ng6 21. f5 Nf8 22. O-O Bg5  
23. fxe6 Qxe6 24. Bf5 [D]



(Now that

I'm castled I can kick Black's queen around  
and get both bishops posted actively) 24...  
Qe7 25. Bc5 Qc7 26. Bd6 Qd8 27. Bg6! [D]

(Page 4)



Position after 27. Bg6! (From p.3)



(The Nc2 is holding my position together so I can freely attack) 27... Qd7 28. Bxf7+ Kd8 29. Qb6+ Kc8 30. Be8! [D]



(Here 30... Qd8 is probably Black's best, but this allows 31. Qxd8+ Kxd8 32. Bxc6 bxc6 33. Rxf8+, winning the knight.) 30... Be3+ 31. Nxe3 Qxd6 32. exd6 Bxe8 33. Qc7# [D]



### Winter Robin Round: 6

Submitted by Olin with my comments and selected Fritz comments [shown thusly].

White: Olin Mastin (1500)

Black: Gary Stevens (1323)

Date: 2/22/2013 (continued next col.)

1.Nf3 e6 2.g3 d5 3.Bg2 Nf6 4.d3 Nc6 5.Nbd2 Bd6 6.O-O h6 7.Re1 e5 8.e4 d4 9.Nc4 Bg4 10.Nxd6+ Qxd6 11.h3 Bh5 12.Bd2 O-O-O (We now have opposite sides castled positions. Gary mounts a kingside attack, I counter with a queenside attack. So which will prevail?) 13.a3 g5 14.b4 a6 15.Rb1 g4 16.hxg4 Bxg4 17.a4 Rdg8 18.b5 [D]



18...axb5?

[18...Nd8 and Black could well hope to play on] 19.axb5+- Nb8 20.Bb4 Qe6 21.c4 Bh3?? [D]



[Weakening the position. 21...h5 22.b6 cxb6 23.c5] 22.Qa4?? (My idea was to dominate the a-file but Fritz says to do it a different way) [Releasing the pressure on the opponent. 22.Ra1 and the scales tip in favor of White] 22...Bxg2 23.Kxg2 h5?? [Letting the wind out of his own sails. 23...Nh5 24.Rh1 Nf4+ 25.Kf1 Nxd3] 24.Qa8?? (A rather chancy move on my part). [Throws away the game. 24.Nh4 and White could have gained the advantage 24...Ng4 25.Rh1] (Why would this move, 24...Qa8, throw away the game? Only because Gary did not follow up with his best 26<sup>th</sup> move! However, it would be difficult for anyone to realize this over the board with the clock ticking away.) 24...h4 25.Ra1 hxg3 26.Rh1 (This looked like my only defensive move) [D] (page 5)

### Position after 26. Rh1 (From p.4)



**26...gxf2+**

(Even though this looked strong, it was not the best move. With the move he played, I think Gary may have missed a forced win. A lucky break for me!) [26...Qg4 27.Rxh8 Rxh8] (Black would now have multiple threats that are difficult, if not impossible, for White to defend). **Kxf2 Ng4+** [27...Rh3 and Black has prevailed 28.Rag1 Ng4+ 29.Ke2 Rxf3] **28.Ke2 Ne3** [28...Rxh1 nails it down 29.Rxh1 f5] **29.Rxh8+-Rxh8 30.Ra7 Qb6?** (Now the game belongs to White. My 24th move, Qa8, was faulty and with Gary's best play I should have had a lost game!) [30...Kd7 31.Qxb7 Rc8] **31.Ba5! [D]**



**Qd6**

**32.Qxb7+ Kd7 33.Bxc7 Qg6 34.Bxb8+ Ke8 35.Qe7# 1-0**

### Winter Robin Round: 7

Submitted by Doug with his comments and selected Fritz comments [shown thusly].

**White: Janos Fucsko (1761)**

**Black: Doug Kern (1861)**

**Date: 2/15/2013**

**1.Nf3 c5 2.g3 Nf6 3.Bg2 d5 4.O-O Nc6 5.d4 e6 6.c3 Be7 7.dxc5 Bxc5 8.b4 Bd6 9.a4 O-O 10.b5 Na5 11.Ba3 [D] (next col.)**

### Position after 11.Ba3 (From prev. col.)



**11...Nc4**

(Fritz suggests 11...e5 which I did not consider.) **12.Bxd6 Qxd6 13.Nbd2 Nxd2 14.Nxd2 Rd8 15.Qb3 e5 [D]**



(I felt I

needed this move for any counter play. I'm under-developed.) **16.Rfd1 Bg4 17.Kf1 Be6 18.Rac1 Rac8 19.Qb2 e4?? [D]**



(I was

concerned about white playing 19...e4 and got lost in the variations. I knew e4 just lost a pawn, but after looking at other alternatives I came back to e4 and forgot it just drops a Pawn!)



20.Nxe4 Nxe4 21.Bxe4 Rc4 22.Bc2 Bh3+  
 23.Ke1? [ 23.Kg1 and white has no worries ]  
 23...Re8 24.e3 Qh6 [D]

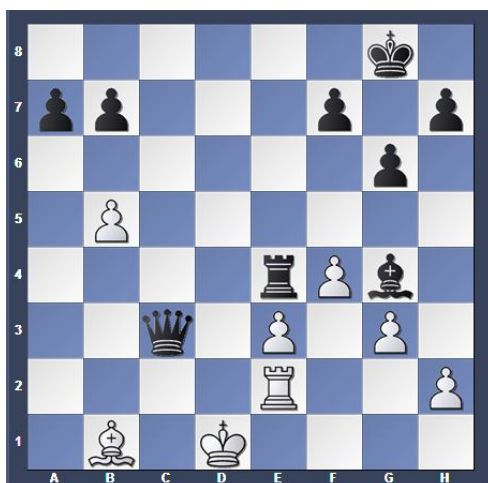


25.Bd3

[25.Rxd5 Rxe3+ should be winning for black ]  
 25...Rxa4 26.Ra1 Rxa1 27.Rxa1 Qb6 28.Qc2 g6  
 (By this point we were both low on time; but  
 for once I had more time remaining than my  
 opponent!) 29.Kd2 Qf6 30.f4 Qb6 31.Re1 Bd7  
 32.Qb3 Be6 [32...a6 is much better] 33.Qa4 Bd7  
 34.Qd4 Qa5 35.Qxd5? Be6 [D]



[Black  
 penetrates into White's position] 36.Qe4 Qa2+  
 37.Kc1 Qa1+ 38.Bb1 Qxc3+ 39.Kd1 Bg4+  
 40.Re2 Rxe4 [D]



0-1

## Winter Robin Round: 7

Submitted by Olin with my comments and  
 selected Fritz comments [shown thusly].

White: Greg Sulat (1283)

Black: Olin Mastin (1500)

Date: 2/15/2013

1.e4 c5 2.Nf3 Nc6 3.d4 cxd4 4.Nxd4 d6 5.c4  
 Nf6 6.Nc3 e6 7.Be3 Bd7 8.Be2 Be7 9.Qd2 O-O  
 10.O-O a6 11.f4 Rc8 12.f5 Nxd4 13.Bxd4 e5  
 14.Be3 Bc6 15.Qd3 b5 16.Nd5 bxc4 [D]

(diagrams for this game are shown with Black at bottom)



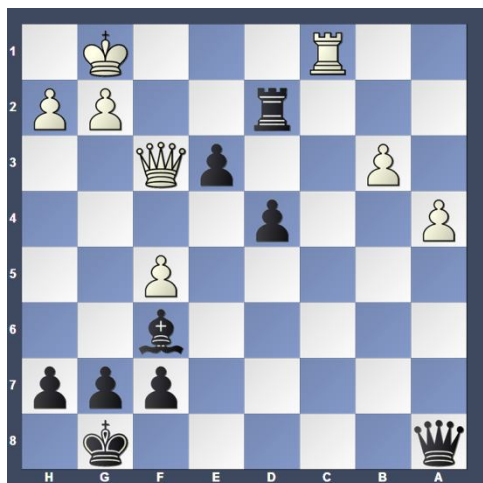
17.Nxf6+

[17.Nxe7+? fails because of 17...Qxe7 18.Qa3  
 Bxe4 (18...Nxe4?! 19.Bxc4 Bb7 20.Rac1)]  
 17...Bxf6 18.Qc2 [18.Qxc4?? A poison bait  
 which should not be taken 18...Bb5 19.Qb3 Bxe2]  
 18...Bb5 19.a4 Bc6 20.Bxc4 Bb7 21.b3 d5  
 22.Rad1 d4 23.Qe2 Bxe4 24.Bxa6 Rc2 [D]

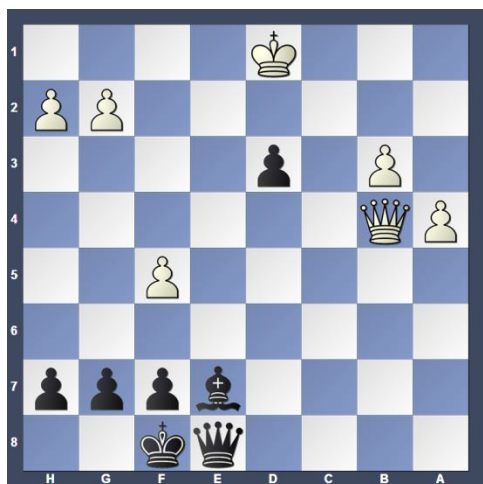


(With this  
 move I felt I had made a significant inroad in  
 the position) 25.Bd2 Qa8 26.Bd3 Bxd3 27.Qxd3  
 Rfc8 28.Rc1 e4 29.Qe2 e3 30.Rxc2 Rxc2 31.Rc1  
 Rxd2 32.Qf3 [D] (page 7) (32...QxQf3?? 33.Rc8+  
 Bd8 34.RxBd8#!!) 32...Qe8 33.Qb7 Kf8 (This  
 move was not necessary as Fritz points out; but  
 to think of 33...e2 over the board would have  
 required more thought than I was (cont. p.7)

### Position after 32.Qf3 (from p.6)



(cont. from p.6) able to muster! All I could think of at the time was to protect my queen. After 33...Kf8, if 34.Rc8 Bd8 after which I have the threat of pushing the e pawn to e2!) [33...e2! 34.Qf3 Qe3+ 35.Qxe3 dxe3 36.Rc8+ Rd8 37.g3 e1Q+ 38.Kg2 Qf2+ 39.Kh3 Qf1+ 40.Kg4 h5+ 41.Kxh5 Qxf5#] 34.Kf1 e2+ 35.Ke1 Rd1+! 36.Rxd1 exd1Q+ 37.Kxd1 d3 38.Qb4+ Be7 [D]



(Another

faulty move. Fritz says simply: [38...Kg8! clearing the e-file. 39.Qd2 Qe4] 39.Qe4 Qd8 40.g4 d2 41.f6 Bxf6 42.Qb4+ Be7 43.Qxd2 Qxd2+ 44.Kxd2 Ke8 45.Kd3 Kd7 46.Kc4 Kc6 47.b4 Bd6 48.h4 Bg3 49.h5 Kb6 50.Kd5 Be1 51.b5 h6 52.Kd6 Bb4+ 53.Kd7 g6 54.hxg6 fxg6 55.Ke6 [D] (next col.) 55...h5?? (Throws away the win!!) [After 55...Bc3! It becomes clear that Black will call all the shots 56.Kd6 Bf6] 56.gxh5 gxh5 57.Kf5 Be7 58.Kf4 Bd8 59.Kg3 Kc5 60.Kh3 [D] (next col.)

### Winter Robin Round: 7

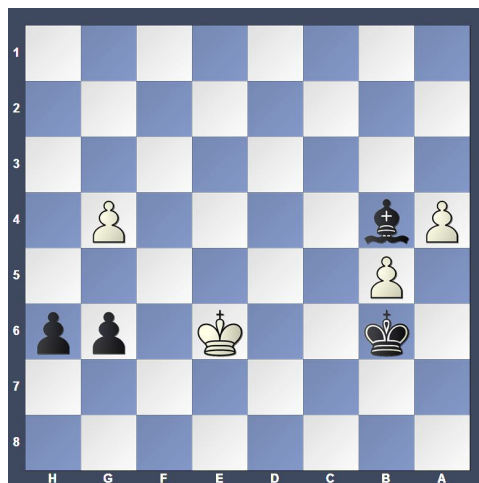
Submitted by Bill with selected Fritz comments [shown thusly].

White: Bob Kampia (1806)

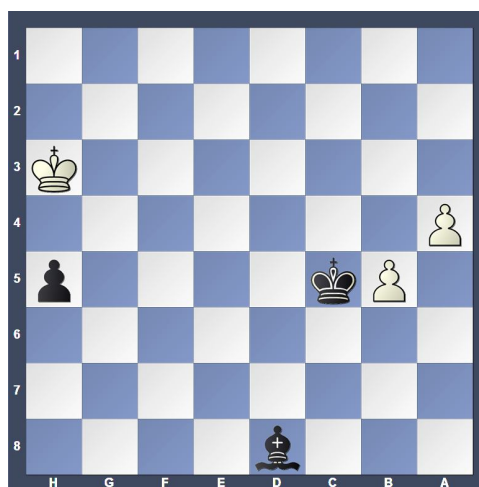
Black: Bill Campion (1683)

Date: 2/15/2013 (cont. middle of next col.)

### Position after 55.Ke6 (from prev. col.)



### Position after 60.Kh3 (from prev. col.)



Drawn

game now! ½-½

(cont. from prev. col.) 1.e4 c5 2.Nf3 d6 3.Bc4 Nf6 4.Nc3 e6 5.a3 a6 6.d3 Nc6 Ne2 [D]



7...Qc7

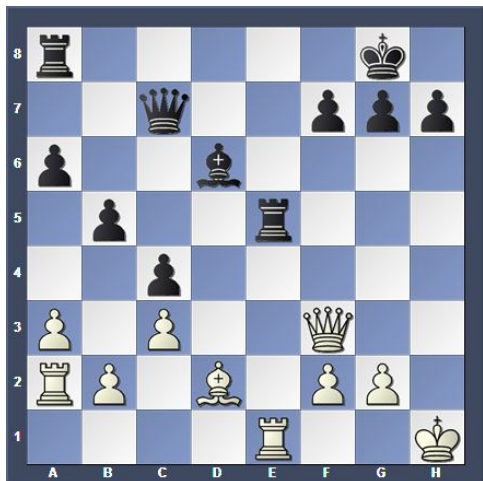
[7...d5!? 8.exd5 exd5] 8.0-0 Be7 9.Ng3 Na5 10.Ba2 b5 11.c3 Bb7 12.Re1 c4 13.d4 0-0 14.Qe2 Rfe8 15.e5 [15.Bf4!?! is an interesting idea] 15...dxe5 16.Nxe5 Nc6 17.Nf3 Bd6 [D] (page 8)

Position after 17...Bd6 (From p.7)



18.Ne4??

[18.Bg5 had to be tried to avoid defeat 18...Nd5 19.Ne4] 18...Nxe4 19.Qxe4 Nb4 20.Qe2 Nxa2 21.Rxa2 Bxf3 22.Qxf3 Bxh2+ 23.Kh1 Bd6 24.Bd2 e5 25.dxe5 [D]



25...Rxe5??

[Ruins a clearly superior position. 25...Bxe5 Black would have gained the upper hand 26.a4 Rad8] 26.Qxa8+ Qb8 [26...Bf8 a fruitless try to alter the course of the game 27.Rxe5 Qxe5 28.Ra1] 27.Qxb8+ [D]



28.a4 Rxe1+ 29.Bxe1] 1-0

## Other places to play chess:

The below are for friendly off hand non-rated games (clocks optional). Bring chess set.

**Monday evenings** about 6:00 to 10:00 PM, "House of Coffee", (formerly Saxby's) 22 North Main Street, Doylestown.

**Tuesday mornings** 9:30 AM to Noon at the Pennridge Community Senior Center in Silverdale. Located on route 113 near route 152.

**Wednesday evenings** 7:30 to 10:00 PM, "Christ Reformed Church at Indian Creek" located at 171 Church Road (intersection with Cowpath Road), Telford, PA. The first meeting April 3<sup>rd</sup> had an impressive turnout of nine players. Besides five NPCC regulars, two players from the Pennridge Senior Center, a player who frequently plays at the "House of Coffee" in Doylestown showed up, one local scholastic player and, of course, Dave Morgan, the organizer.

You are all encouraged to come out to play chess simply for fun. Players of all levels are welcome, beginners to expert and beyond.

## Allentown Center City Chess Club Offer

(from Eric C. Johnson): "For any of our events -- if three or more Lansdale players carpool together -- the driver plays for free!"

The NPCC 2013 April Quads got underway Friday April 5th with a fine turnout, enough for four quad sections. Two new faces were added to the club to take part in the quads. The club welcomes Jacqueline Brown and Burhan Kayali as new members to NPCC.

**Check the website for the latest schedules as they are updated.**

[www.northpennchessclub.org](http://www.northpennchessclub.org)

The next newsletter will feature NPCC member Matt Martello's first place win in the U1700 section of the Tom Volkert Memorial at the Allentown Center City Chess Club, March 16<sup>th</sup>. There will also be games played by two NPCC members vs. Grandmasters!