

~ En Passant ~

Newsletter of the North Penn Chess Club, Lansdale, PA – Winter 2018, Part 1

E. Olin Mastin, Editor

North Penn Chess Club
500 West Main Street
Lansdale, PA 19446

www.northpennchessclub.org
(215) 699-8418 donfunk@msn.com

This issue, for the most part, features 2018 Winter Robin games. The purpose of these newsletters is to include as many games as possible by NPCC players irregardless of the strength of the participants.

Thanks to all for submitting games!

Games from the NPCC 2018

Winter Robin Tournament:

Round: 1

Submitted by Craig with selected Fritz comments [shown thusly].

White: Craig Gerland (1601)

Black: Dennis Baluk (2007)

Date: 1/5/2018

[A31: Symmetrical English: 2 Nf3 Nf6 3 d4] 1. d4 Nf6 2. c4 c5 3. Nf3 cxd4 4. Nxd4 Nc6 5. a3 g6 6. b4 Bg7 7. e3 a5 8. b5 [D]



8...Nb8 9.Qc2 d6 [White has a new backward pawn: c4] 10.Bb2 Nbd7 11.Nd2 0-0 12.Be2 Qc7 13.Rc1 Nc5 14.0-0 Bd7 15.N2b3 Rfc8 [D]

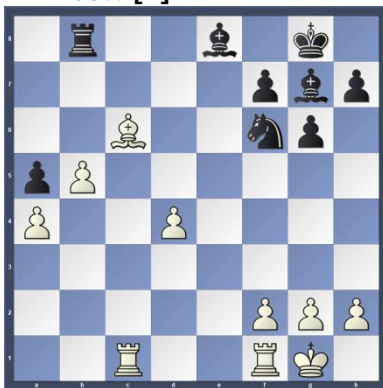


(Text cont. next col.)

(Cont. from prev.col.) 16.Nxc5 Qxc5 17.Nb3 Qc7 18.a4 [White plans c5] 18...Be6 19.Nd4 Bd7 20.Ba3 Be8 21.c5 Qd8 22.Bf3 [White intends c6] 22...Rab8 23.c6 Qb6 24.Qd3 e5?? [D]



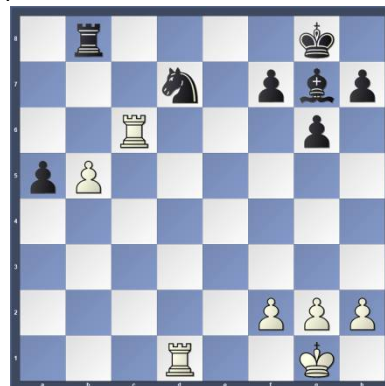
[Leads to further unpleasantness.] [Better is 24...bxc6 25.Bxc6 Nd7±] 25.Bxd6+- exd4 [25...bxc6 does not win a prize 26.Bxb8 Qxb8 27.Nxc6 Bxc6 28.Rxc6+-] 26.Bxb8 Rxb8 [26...bxc6 doesn't do any good 27.Be5 dxe3 28.Qxe3+-] 27.Qxd4 [Better is 27.c7 secures the win 27...Rc8 28.Qxd4 Qxd4 29.exd4+-] 27...Qxd4 28.exd4 bxc6 29.Bxc6?? [D]



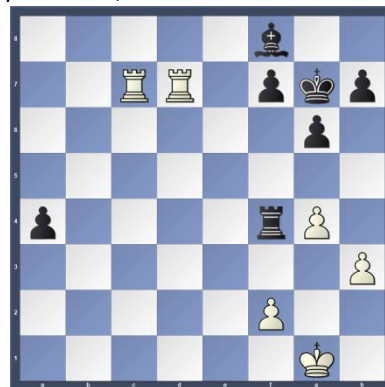
[With this move White loses his initiative.][Better is 29.bxc6 and the rest is a matter of technique 29...Rc8 30.c7+-] 29...Bxc6 30.Rxc6 [White has a new protected passed pawn: b5] 30...Nd5 31.Rd1 Nb6 [31...Kf8!?= should be considered] 32.d5± Nxa4 [Better is 32...Kf8!? 33.g4 Bh6±] 33.d6+- Nb6 34.d7 Nxd7 [D] (Next col.) 35.Rxd7 Rxb5 36.Rc8+ Bf8 37.g3 Kg7 38.Rcc7 Rf5 39.g4 Rf4 40.h3 a4 [D] (Next col.)

(Text cont. next col.)

Position after 34...Nxd7 (From prev. col.)



Position after 40...a4 (From prev. col.)



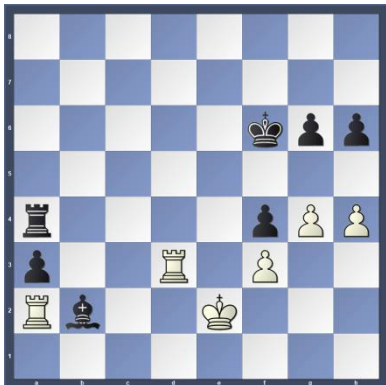
(Cont. from prev.col.) 41.Rd2 a3 [White has to watch this pawn] 42.Kg2 Kf6 43.Kg3 Ra4 44.Rc6+ Ke5 45.Ra2 Kd5 46.Rc8 Bd6+ [D]



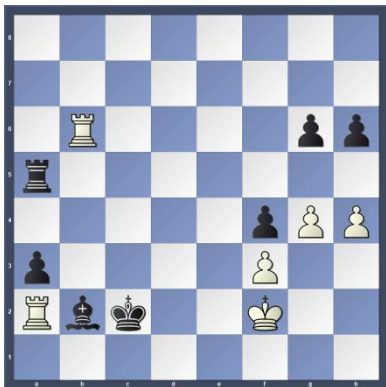
[The bishop aims for Bf8-d6-e5-d4-b2] 47.Kg2 Be5 48.Rd2+ Bd4 49.Rd8+ Ke5 50.Ra2 Bb2 [A classical outpost] 51.Rd3 f5 52.f3 f4 53.Kf2 Kf6 54.h4 h6 55.Ke2 [D] (p.2) 55...Ke5 56.Rd8 Ra6 57.Rd3 Ra5 58.Rb3 Kd4 59.Rb6 Kc3 60.Kf2 Kc2 [D] (p.2) 61.Rbxb2+??

(Text cont. p.2)

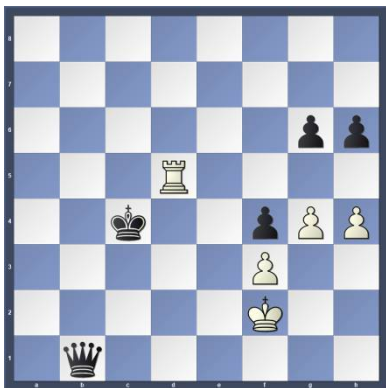
Position after 55.Ke2 (From p.1)



Position after 60...Kc2 (From p.1)



(Cont. from p.1) [Causes further problems for White] [Better is 61.Kf1] 61...axb2 62.Rxa5 b1Q 63.Rc5+ Kd3 64.Rd5+ Kc4 [D]



[64...Kc4 65.Rd2 Oh1-+] 0-1

Copy and paste the link below into your browser:

<http://view.chessbase.com/cbreader/2018/1/9/Game48075015.html>

Round: 1

Submitted by Terance with his comments and selected Fritz comments [shown thusly].

White: Robert Kampia (1785)

Black: Terance Hall (1836)

Date: 1/5/2018

[B50: Sicilian: 2...d6, Miscellaneous] 1.e4 c5 (Terance - Yes, a Sicilian! I only played one Sicilian back in the mid-nineties that I can (Text cont. next col.)

Cont. from prev. col.) remember so this is new to me.) 2. Nf3 d6 3.Bc4 Nf6 4.d3 e6 [last book move] 5.Bg5 [D]



(Terance - I believe the normal moves here are Bb3 and 0-0.) 5...Be7 6.Bxf6 (Terance - Typical Kampia style exchanging pieces at any opportunity. This gives me a slight advantage.) 6...Bxf6 7.c3 O-O 8. O-O a6 [D]



(Terance - Nc6 was a good move also.) 9.a4 (Terance - d4 was also a good move.) 9...Qc7 (Terance - Nc6 is best here. I also thought of playing d5 which is what you want to do in the Sicilian. I played Qc7 to support Bb7 when played after b6 and keep an eye on e5, but my main reason was to prevent d4. If d4 is played then cxd4 and White can't take back on d4 because Bc4 hangs.) 10.Nbd2 Nc6 11.Re1 (Terance - Best move, but we can see how Blacks Qc7 and Nc6 prevents e5.) 11... b6 [D]



(Text cont. next col.)

(Cont. from prev. col.) (Terance - From my experience in this game the Bishop might be better placed on d7 and or the rook to b8 in this position.) 12.Qc2 Bb7 13.Nf1 (Terance - I thought this was a good move as the Knight does nothing on the d2 square.) (13.h3 g6) 13...Na5 [D]



(Terance - Here I was trying to formulate a plan and should of stuck with Rad8 and push the d pawn. I decided to expand on the Queenside to stop anything White wanted to do on the Kingside.) 14.Ba2 b5 15.Rac1 bxa4 (Terance - Better was my initial move of g6 and then Bg7 which would help protect my King and Bishop and parry any Knight threats on my King.) (15...Rfc8 16. h3) 16. Qxa4 [D]



16...Bc6 (Terance - Better was Rab8.) 17.Qc2 Qb7 (Terance - I played this to prevent b4 and opening up the c-file.) (17...Rfb8 18. Rb1) 18.N3d2 (18. Rb1 Bb5) 18...Rab8 19.b3 (19. Rb1 Qd7) 19...Rfc8 [D]



(Text cont. p.3)

Cont. from p.2) (Terance - Now I have a slight advantage as any opening up of any files on the Queenside will be in my favor.) (19... g6 20. Nf3) **20.Rb1** (20. Ne3 g6) **20...Qd7** (20... Bb5 21. Ne3) **21.Nf3** (21. Ne3 Bb5) **21...Bb5** (Terance - Here I realized that I need to get my a5 Knight to c6 to cover the d4 and b4 dark squares along with Bf6. So, I needed White to put his c pawn on c4 thus I played this move Bb5 to goad white into doing this.) (21... d5 22. Ng3) **22.c4** [D]

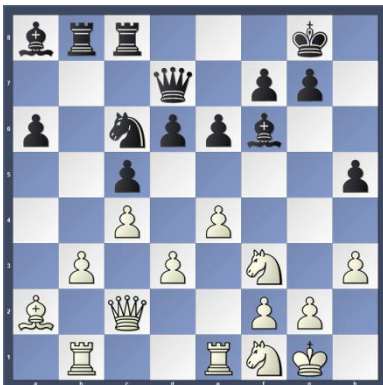


(Terance - Wow it worked! Now White's light squared Bishop is a bad Bishop out of play.) (22. Qd2 Qc7) **22...Bc6** **23.Ne3** (Terance - First dubious move as Ng3 was better as it could go back to e2 to cover some dark squares.) (23. Qd2 Nb7) **23...h5** [D]



(Terance - Played to stop any attack on my Bishop by Ng4 or g4. Best was simply Ba8 to clear the c6 square for my a5 Knight.) (23... Ba8 24. Qd2 Nc6 25.Nc2) **24.h3** (24. Qd2 Nb7) **24...Ba8** (Terance - Best move in the position to vacate the c6 square for the a5 Knight.) **25.Nf1** (Terance - Better was Qd2 as Now Black has a nice advantage.) (25. Qd2 Nc6) **25...Nc6** [D] (Next col.) **26.Qd2 Qe7** (Terance - Better is Qd8.) (26... Qd8 27. Ne3) **27.Ne3** (27. Ng3 g6 28. Ne2) **27...Bd4** [D] (Next col.) (Terance - In keeping with my plan a5 should be played here. I was trying to figure out which square would be best (Text cont. next col.)

Position after 25...Nc6 (From prev. col.)



Position after 27...Bd4 (From prev. col.)



(Cont. from prev. col.) for my Knight on c6, b4 or d4? I decided on d4 to add pressure to b3. To do this I was willing to give up my Bishop to put my Knight there.) (27... Nb4 28.Rbd1) **28.Nc2** (Terance - Best was to take the Bishop on d4.) **28...Bf6** **29.Re2** [29. d4 cxd4 30. Ncxd4 Ne5] **29...a5** (Terance - I did think of playing g5 here with the ideal of g4 and moving the f3 Knight so I can control the d4 square. I was not that comfortable opening up my King.) **30.Na3** (Terance - Better was d4 as now Black has a nice advantage.) [30. d4 Nxd4 31. Ncxd4 cxd4 32. Nxd4 Rd8] **30...Bb7** (Terance - Played to counter Nb5 with Ba6.) [30... Kh7 31. Re3] **31. Nb5 Ba6 32.Nc3** [D]



(Text cont. next col.)

(Cont. from prev. col.) [32. d4 Bxb5 33. dxc5 dxc5 34. cxb5 Ne5 35.Nxe5 Bxe5 36. Qxa5 h4] **32...Qd8** (Terance - Here I was trying to figure out the best way to pressure White. I should have played Rb7 to double up on the b-file.) [32... Nd4 33. Nxd4 Bxd4 34. Nd1] **33.Rd1** [33. Ree1 Qb6] **33...Rb4 34.Ree1 Rcb8 35.Ne2** (Terance - First bad move, Rb1 was much better.) **35...a4** [D]



(Terance - The key move! Now my advantage is two and an half pawns and should be winning.) **36.Nc1** [36. g4 axb3 37. Bb1 Ne5 38. Nxe5 dxe5] **36...axb3 37. Bb1 Ra4** [37...b2 keeps an even firmer grip 38. Ne2] **38.Ne2 Nb4** (Terance - Best was b2.) [38... h4 keeps an even firmer grip. 39. Nh2] **39.Nc3** [39. e5 dxe5 40. Nc3 Ra5] **39...Ra5** (Terance - At this time I was very short of time and trying to figure out how to win this and make the time control..) **40.Rc1** (Terance - A mistake!) [40. e5 dxe5 41. Ne4] **40...Nc6 41.Qb2 Qb6 42.Re2 Qb4** [42... Nd4 and Black can already relax. 43. Nxd4 Bxd4 44. Qd2] **43.g3 Qb7** (Terance - Nd4 should be played here.) **44.h4 Qa7 45.Rd1 Bc8** (Terance - I was trying to reroute the Bishop to d7 to use the "a" file for my Rook and Queen.) [45... Qb6 seems even better. 46.Ree1] **46.Qc1 Ba6** [D]



(Text cont. p.4)

(Cont. from p.3) (Terance - I found this to be the best place for the Bishop in which the chess engine agrees.) **47.Rb2 Qa8 48.Qd2 Ra3 49.Rc1 Rb4** (Terance - Trying to crack the coconut before time runs out.) **50.Kh2 Qb8 51.Qd1 g6** (Terance - Consolidating the Kingside which agreed with the chess engine as the best move.) **52.Nd2** (Terance - This move now lets me in, and now I feel that I am winning but running very short of time.) **52...Nd4 53.f4 [D]**



(Terance - Here the chess engines say my advantage is worth a Rook and a pawn, 6 pawns, but after 30 moves ahead the engine sees no clear win yet, and I am running out of time across the board!) **53...Nc2 [D]**

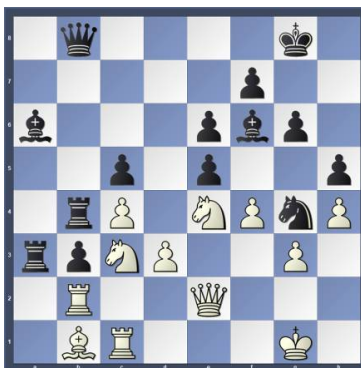


(Terance - I played this out of desperation to clarify the position in my favor as it is a forcing move as the Knight on c3 is now hanging.) **54.e5?? [Terrible, but what else could White do to save the game?]** **54...Ne3** (Terance - dxe5 was stronger.) **55.Qe2 Ng4+ [D]**



(Text cont. next col.)

(Cont. from prev. col.) (Terance - I know I am completely winning but I am down to about a minute in sudden death.) **56.Kg1 dxe5 57.Nde4 [D]**



57...exf4 58.Nxf6+ Nxf6 59.Rf1 e5 60.gxf4 exf4 61.Qe7 Rb6 [D]



62.Qxc5 Ra1 63.Qd4 [The final blow.] 64.Qxf3 Ng4 [D]



(Terance - I made this move with seconds left on my clock.) **64.Nd5 f3 [64...Re6 Secures victory. 65.Qxf4 Qa7+ 66.Kg2 Ra3] 65.Qxb6 Qg3+ [D]**



(Text cont. next col.)

(Cont. from prev. col.) (Terance - Now it is a draw by perpetual with 20 some seconds left on my clock.) **66.Kh1 Qh3+ 67.Kg1 Qg3+ 68.Kh1 Qh3+ [Twofold repetition] [68...Qxh4+!? 69. Kg1 Qg3+ 70. Kh1 Rxb1 71. Rfxb1 f2 72. Nf6+ Nxf6 73.Rxf2 Bb7+ 74. Qxb7 Qxf2] 69.Kg1 Qg3+ [D]**



(Terance - Threefold repetition!) **1/2-1/2**

Something new has been added. Copy and paste the link below into your browser and push enter. A Chess Base html file will open. You will be able to scroll thru the entire game with all of the comments/variations intact. Nothing edited out! Henceforth this will become a standard feature in all the newsletters.

<http://view.chessbase.com/cbreader/2018/1/6/Game99028390.html>

Round: 1

Submitted by Olin with selected Fritz comments [shown thusly]. (Calibri)

White: Olin Mastin (1500)

Black: Ira Siegel (1345)

Date: 1/5/2018

[D02: 1 d4 d5 2 Nf3 sidelines, including 2...Nf6 3 g3 and 2...Nf6 3 Bf4] **1.d4 d5 2.Nf3 Bf5 3.Bf4 e6 4.e3 Nf6 5.c3 Nbd7 6.Nbd2 h6 7.h3 g5 [D]**



(Text cont. p.5)

(Cont. from p.4) 8.Be5 Nxe5 9.dxe5 Nd7 10.Nb3 Bg7 11.Bd3 c6 [D]



[Better is 11...Bxd3!? 12.Qxd3 c6] 12.Bxf5 exf5 13.e6 [D]



[Better is 13.Nbd4 and White can hope to survive 13...Nxe5 14.Nxf5=] 13...fxe6 14.Nfd4 Qe7 15.Qh5+ Qf7 [Better is 15...Kd8!?] 16.Nxe6 [D]



16...Nf6?? [Not a good decision, Better is 16...Be5 would keep Black alive 17.Qxf7+ Kxf7=] 17.Nc7+ [Better is 17.Nxg7+ Kf8 18.Qxf7+ Kxf7 19.Nxf5+--] 17...Ke7 [D]



(Text cont. next col.)

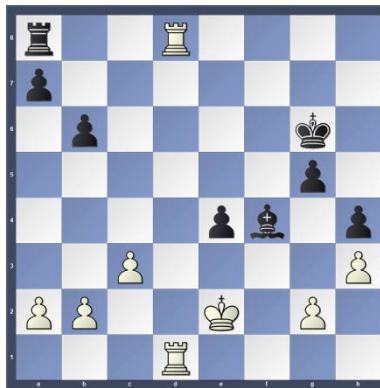
(Cont. from prev. col.) 18.Qxf7+ Kxf7 19.Nxa8 Rxa8 20.0-0-0 Ne4 21.Rhf1 b6 22.f3 Nd6 23.e4! [D]



[Deflection: d5] 23...fxe4? [23...dxe4 24.Rxd6 Deflection Pinning] 24.fxe4+ Ke6 25.exd5+ cxd5 26.Rfe1+ Ne4 [D]



27.Nd2 Kf5 28.Nxe4 dxe4 29.Rd7 Be5 30.Rf1+ Bf4+ 31.Kd1 Kg6 32.Ke2 h5 [32...Kh5 33.Re7 Kh4 34.Rxe4+--] 33.Rfd1 h4 [33...Kf5+-- a last effort to resist the inevitable] 34.Rd8 [D]

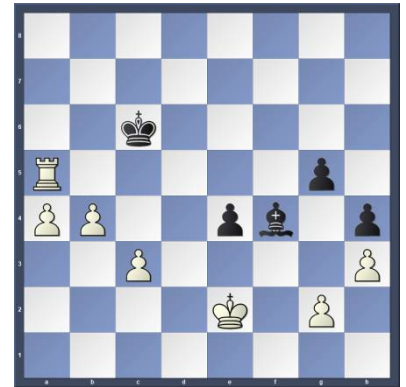


34...Rxd8 35.Rxd8 Kf6 36.Rd7 a6 37.Rb7 Ke5 38.Rxb6 Kd5 39.Rxa6 Kc5 40.b4+ Kb5 41.Ra5+ Kc6 42.a4 [D] (Next col.) 1-0

Copy and paste the link below into your browser:

<http://view.chessbase.com/cbreade/r/2018/1/9/Game1654912765.html>

Position after 42.a4 (From prev. col.)



Round: 1

Submitted by Joe with his and Mike's comments and selected Fritz comments [shown thusly].

White: Michael O'Gara (1677)

Black: Joseph Mucerino (2070)

Date: 1/5/208

[D35:Queen's Gambit Declined: Exchange Variation] 1.d4 d5 2.c4 e6 3.Nf3 c6 4.Nc3 Nf6 5.Bg5 Be7 6.e3 Nbd7 [D]



7.cxd5 exd5 8.Bd3 0-0 9.0-0 h6 10.Bh4 Ne4 11.Bxe7 Qxe7 12.Re1 f5?! [D]



(Joe - Honestly this is a bit dubious, because it leaves a hole on g6.)

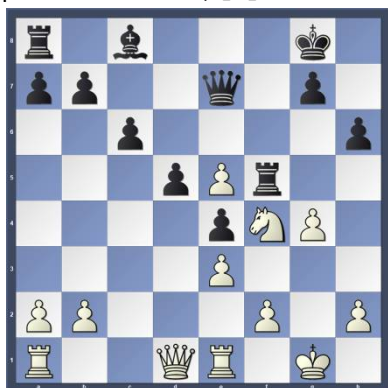
13.Ne2 Ndf6 14.Ne5 (Joe - The right idea but not the right time.)

(Text cont. p.6)

(Cont. from p.5) 14.Nf4 first so after 15.Ne5, both knights are hitting g6. Playing the test first gives black some counterplay.) (Mike - Fritz gives Nf4 to maintain White's advantage.) **14...Ng4** **15.Bxe4** (Mike - Ng6 which was my plan runs into Qd6 with double attack on h2 and g6.) **15...fxe4** **16.Nf4** [D]



[Better is 16.Nxg4!? is an interesting alternative 16...Bxg4 17.Qd2] (Joe - This simply loses a pawn. White should swap knights instead.) [16.Nxg4! Bxg4 17.Rf1] **16...Nxe5** **17.dxe5** **Rf5** [17...Qxe5?! 18.Ng6 Qg5 19.Nxf8] **18.g4?** (Mike - A reckless move, hoping for a blunder. The pawn on e5 is lost.) [D]

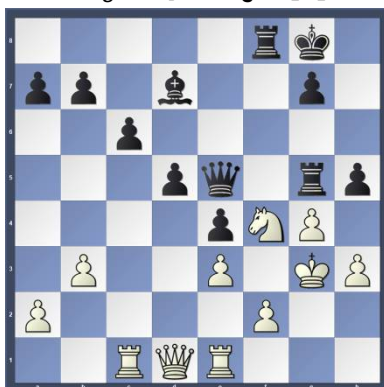


(Joe - This weakens the king too much.) [Better is 18.h3] **18...Rg5?!** (Joe - Although the rook points down towards white's king, it loses a lot of mobility here. 18...Rf7 was better.) [Better is 18...Rf7! 19.h3 Qxe5] **19.h3** **Qxe5** (Joe - 19...h5 is even better. Black can play this on the next few moves as well.) **20.b3** [Better is 20.Qd4 Bd7 21.Qxe5 Rxe5] (Mike - Better attempt is to trade Queens and defend a worse position, but I thought I could build a fortress.) [20.Qd4 Bd7 21.Qxe5 Rxe5+] **20...Bd7** **21.Rc1** **Rf8** (Mike - All of Black's forces are in the attack. The White King is defenseless.) **22.Kg2** [D] (Next col.) (Text cont. next col.) (Text cont. next col.)

Position after 22.Kg2 (From prev. col.)



22...h5! [Aiming for ...Bxg4!] [A convincing end.] **23.Kg3?** [D]



[Hastening the defeat.] (Joe - Relatively best was 23.Rg1.) [23.Qc2; 23.Nxh5 Rxf2+] **23...Bxg4!** [Mate threat] **24.hxg4** **Rxg4+** **25.Kh3** **Qg5** **26.Qxg4** [D]



26...Qxg4+ **27.Kh2** **g5** [And now ...Qh4+ would win.] **28.Nh3** **Rf3** [Black mates.] **29.Nxg5** **Rxf2+** **30.Kh1** **Qg2#** [D] (Next col.) (Text cont. next col.) [Precision: White = 13%, Black = 67%.] **0-1** **Copy and paste the link below into your browser:**

<http://view.chessbase.com/cbreader/2018/2/24/Game1049332265.html>

Position after 30.Kh1 Qg2# (From prev. col.)



Round: 2

Submitted by Mike with his comments and selected Fritz comments [shown thusly].

White: Dennis Baluk (2004)
Black: Michael O'Gara (1677)
Date: 1/12/2018

[A11: English Opening: 1...c6] **1.c4** **c6** **2.Nf3** **d5** **3.e3** **Nf6** **4.Nc3** **g6** **5.b3** **Bg7** **6.Bb2** **0-0** **7.d4** [D]

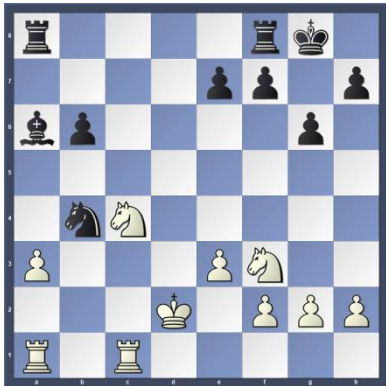


[Last book move.] **7...c5** (Mike - A somewhat dubious move, but wanted to open up the position with White not castled. White can safely take on c5.) [7...Ne4 8.Be2=] **8.Be2** **Nc6** **9.dxc5** **Ne4** [Better is 9...Qa5 10.0-0 Ne4=] **10.Na4** [Better is 10.Nd4 is a viable option 10...Qa5 11.Rc1 dxc4 12.0-0 Nxc3 13.Bxc3 Qxc5 14.Bxc4=] **10...Qa5+** **11.Kf1** **Bxb2** **12.Nxb2** **Nc3??** [D]

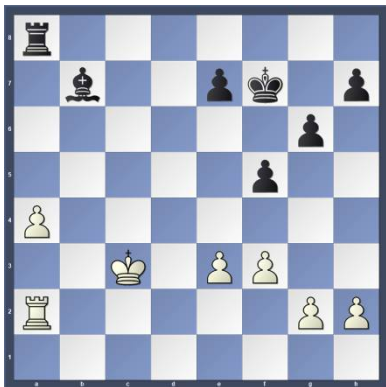


(Text cont. p.7)

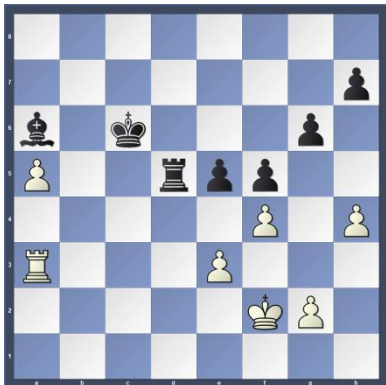
(Cont. from p.6) [Gives the opponent counterplay.][Better is 12...dxc4 13.Nxc4 Qxc5] 13.Qd2 Nxe2 14.Kxe2 dxc4 [14...Qa6 15.Qc3=] 15.Qxa5 Nxa5 16.b4 Nc6 17.a3 b5 18.cxb6 axb6 19.Nxc4 Ba6 20.Rhc1 Nxb4 21.Kd2?? [D]



(Mike - A seemingly innocent move, Fritz gives this as the losing move.) [Better is 21.e4= is the best option White has; 21.Nfd2] 21...Rfd8+ 22.Nd4 Nc6 23.Nxb6? [Better is 23.Ke1 Nxd4 24.exd4 Rxd4 25.Ne3-+] 23...Nxd4-+ 24.Nxa8 Nb3+ 25.Kc2 Nxa1+ 26.Rxa1 Rxa8 27.a4 f5 28.Kc3 Kf7 29.Ra2 Bb7 30.f3 [D]

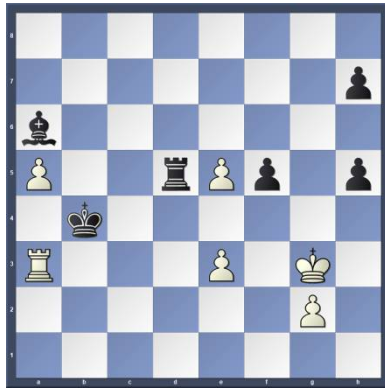


30...e5 31.a5 Ba6 [31...Rc8+ might be the shorter path 32.Kd2-+] 32.f4 Rc8+ 33.Kd2 Rd8+ 34.Ke1 Rd5 35.Kf2 Ke6 36.h4 Kd6 [36...e4 keeps an even firmer grip 37.Kg1-+] 37.Ra3 Kc6 [D]

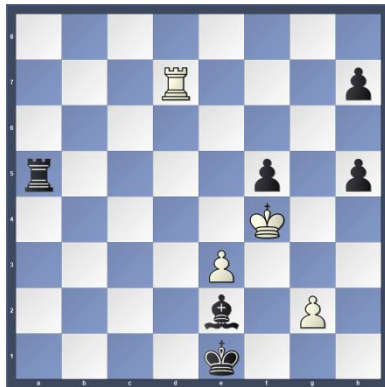


[37...Rd2+ and Black can already relax 38.Kg1 Rd3 39.Rxd3+ Bxd3 40.Kf2-+] (Text cont. next col.)

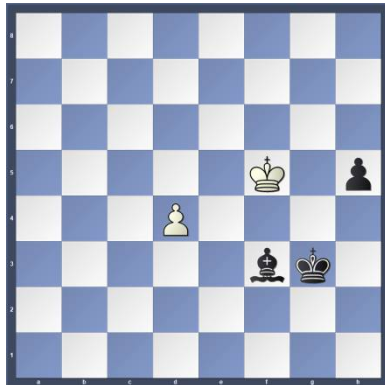
Cont. from prev. col.) 38.h5 gxh5 39.Kg3 Kb5 [39...e4 makes it even easier for Black 40.Ra1 Kc5 41.Rb1-+] 40.fxe5 Kb4 [D]



(Mike - Both sides making move 40 in a little bit of time scramble. Now the end game can be given full thought. Luckily Black has the correct Bishop for the Rook Queening square and will be able to cover the important remaining pawns.) 41.Ra1 Rxe5 42.Kf4 Rxa5 43.Rb1+ Kc3 44.Rc1+ [44.Rh1 doesn't do any good 44...h4! Decoy: e4 45.e4 fxe4-+] 44...Kd2 45.Rc7 Be2 46.Rd7+ Ke1 [D]



47.Rxh7 Kf2 48.g3 Bg4 49.Rd7 Ra4+ 50.Rd4 Rxd4+ 51.exd4 Bf3 52.Kxf5 Kxg3 [D]



0-1 Copy and paste the link below into your browser:

<http://view.chessbase.com/cbreder/2018/1/26/Game700408234.html>

A Game from the NPCC 2017 November Quads Tournament: Round: 3

Submitted by Olin with my comments and selected Fritz comments [shown thusly].

White: Olin Mastin (1500)
Black: George Murphy (1420)
Date: 12/1/2017

[D05 Colle] 1.d4 e6 2.Nf3 c5 (Olin - I forgot that I wanted to play 3.Bf4! to get into the London System!. Now it's a Colle!) 3.e3 Nf6 4.c3 d5 5.Bd3 Nc6 6.0-0 Bd7 7.Re1 cxd4 8.exd4 [D]

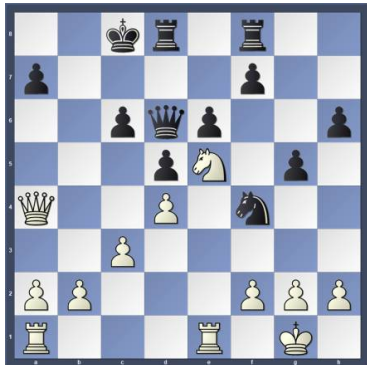


(Olin - By capturing with the e-pawn, I have an open diagonal for my dark squared Bishop. 8...Bd6 9.Ne5 (Olin - I wanted to block Black's dark squared Bishop so I could still get my Bishop to f4!) 9...Qc7 10.Bf4 Rf8 [D]



(Olin - The purpose of this move puzzled me.) [10...0-0] 11.Nd2 0-0-0 12.Bg3 (Olin - I figured that my Bishop needed some protection because of the pin on my e5 Knight!) 12...g5 13.Ndf3 h6 14.Bb5 [14.a4 keeps more tension. 14...Kb8 15.Nd2 Be8 16.Qf3 Qe7 17.a5] (Olin - I did consider playing a line similar to what Fritz16 is suggesting!) 14...Nh5 (Olin - I did not think this was a very good move for Black!) [Black should try 14...Kb8] 15.Bxc6 (Olin - If Black were to play BxNe5, I have BxBe7+. Then after Black captures with either the Queen or Rook, I have NxBc5 exerting pressure on d7.) 15...Bxc6 16.Nxc6 bxc6 (Text cont. p.8)

(Cont. from p.7) (Olin - Possibly better than 16...BxBg3!? 17.hxBg3, even though Black creates a semi-open b-file by capturing with the b-pawn?! Either line has drawbacks for Black.) **17.Bxd6! Qxd6 18.Ne5** (Olin - Once again, placing a block on the b8-h2 diagonal!) **18...Nf4!?** (Olin - I wasn't sure if Black were to try f6!?) **19.Qa4?! [D]**



(Olin - With this move I simultaneously attack a7 and c6!) **19...Kb7** (Olin - Black awkwardly protects the two attacked squares with his King!?) **20.Qb3+ Ka8 21.a4** (Olin - I wanted to get the a-pawn advancing on the a-file and at the same time creating an escape square for my Queen, a2!) **21...f6 22.Nf3 Rb8 23.Qa2?! [D]**

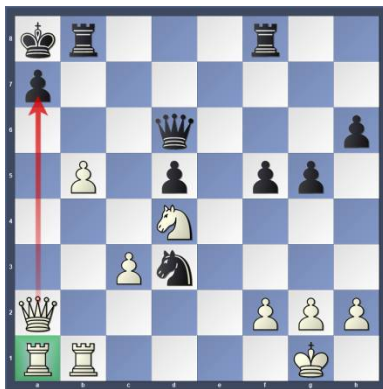


(Olin - By placing my Queen on a2, I can create pressure on the a-file!) **23...Nd3 24.Reb1** (Olin - Saving the King Rook from Black's pesky Knight and now having some pressure on both the a-file and the b-file!) **24...e5 25.b4 exd4! 26.Nxd4 f5? 27.b5 cxb5? [D]**



(Text cont. next col.)

(Cont. from prev. col.) (Olin - Not the best move for Black.) **28.axb5! [D]**

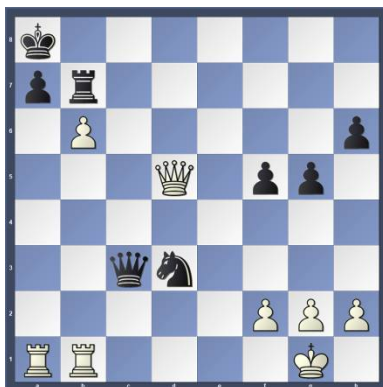


(Olin - Now I have my open a-file!!) [Less strong is 28.Rd1 Ne5+--] **28...Rb7 29.Nc6** [White threatens Qxa7+! and mate.] **29...Rff7 30.Na5 Qc5? [30...Rbe7 [D]**



Analysis Diagram

A) (Better is 31.b6! Nc5 (31...axb6 32.Nc6+) 32.b7+ Rxb7 33.Nxb7 Rxb7 34.Rxb7 Kxb7 35.Qxa7+ Kc8 36.Rb1 36...Ne6
B) 31.Nc6 Rb7]
31.Nxb7 Rxb7 32.b6 Qxc3?? 33.Qxd5!! [D]



(Olin - George resigned) **1-0**

Copy and paste the link below into your browser for a complete analysis with nothing edited out:

<http://view.chessbase.com/cbreader/2018/2/26/Game1219718515.html>

This concludes this issue. More games in next issue.

Other places to play chess:

The below are for friendly off hand non-rated games (clocks optional). Bring chess set.

Monday evenings:

About 6:00 to 9:00 PM, "Starbucks," 10 North Main Street, and / or "Nonno's Italian Coffee Parlor," 6 E. State St., Doylestown

Tuesday mornings:

9:30 AM to Noon at the Penridge Community Senior Center in Silverdale. Located on route 113 near route 152

Wednesday evenings:

7:30 to 10:00 PM, "Christ Reformed Church at Indian Creek" located at 171 Church Road (intersection with Cowpath Road), Telford. (Temporarily closed during Lenten Season)

Weekdays:

8:00 to 4:00 Daily, Senior Center, 312 Alumni Ave, Harleysville.

Friday Mornings:

10:00 AM up to 2:00 PM Indian Valley Public Library, 100 E. Church Ave, Telford.

Allentown Center City Chess Club

Offer (from Eric C. Johnson): "For any of our events -- If three or more Lansdale players carpool together -- the designated driver plays for free!"

<http://www.freewebs.com/allentowncentercitychessclub>



Mike O'Gara vs. Alex MacFarlane. Joe Mucerino in background.