

~ En Passant ~

Newsletter of the North Penn Chess Club of Lansdale, PA – Winter 2015, Part 5

E. Olin Mastin, Editor

North Penn Chess Club
500 West Main Street
Lansdale, PA 19446

www.northpennchessclub.org
(215) 699-8418 donfunk@msn.com

This issue is a continuation featuring games played in the 2015 NPCC Winter Robin. As previously stated, I intend to publish the games in a chronological sequence as much as possible. A word about that: Some of the rounds and games were played out of the sequence as set up by the pairing software. Therefore I decided to show the actual date and round the game was played and note what the scheduled round was (or vice versa). When I send the games into the USCF for rating the software will, of course, use the scheduled sequence.

Thanks to all for submitting games!

Games from the NPCC 2015 Winter Robin Tournament:

Round: 4 (As scheduled)

Submitted by Bob with his comments and selected Fritz comments [shown thusly].

White: Don Edwards (1324)

Black: Bob Pisciotta (1468)

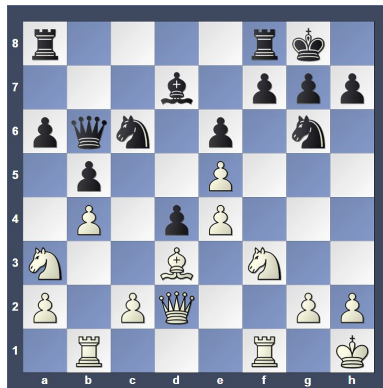
Date: 1/30/2015

[C02: French: Advance Variation] 1.e4 e6 2.d4 d5 3.e5 c5 4.dxc5 (Bob - This is a mistake as it leaves the e5 pawn unsupported.) 4...Bxc5 5.Be3 [D]

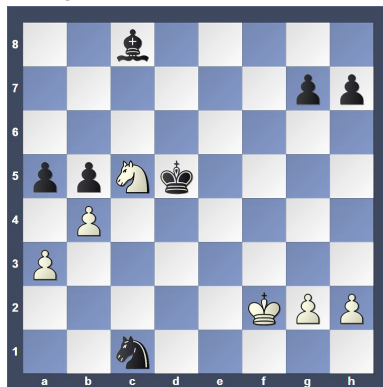


(Bob - Another mistake. Allowing the exchange of the black square bishops creates two isolated white e pawns and weakens the king.) (Text cont. next col.)

(Cont. from prev. col.) [Better is 5.Nc3!? might be a viable alternative 5...Nc6 6.Nf3=] 5...Bxe3 6.fxe3 Ne7 7.Nf3 Qb6 [7...Nbc6!? must definitely be considered 8.Nc3 0-0] 8.Qd4= Qc7 9.Bd3 Nbc6 10.Qc3 [10.Qc5!?= is worth consideration] 10...Bd7 11.Na3 a6 12.b4 b5 13.0-0 0-0 14.e4 Qb6+ 15.Kh1 d4 16.Qd2 Ng6 17.Rab1 [D]

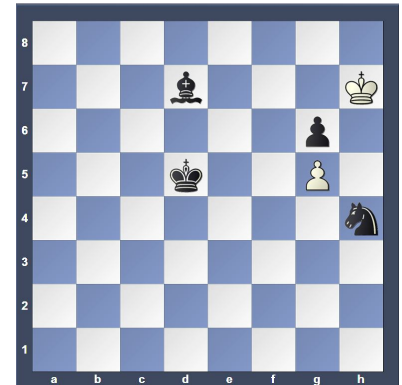


17...Qd8? [This is a mistake. releasing the pressure on the opponent] [Better is 17...Ncx5 it becomes clear that Black will call all the shots 18.Be2 Nxf3 19.Rxf3 Bc6] 18.Be2 f6 19.exf6 Qxf6 20.c3 Qf4 21.Qxf4? [Better is 21.Qd3 and White can hope to live 21...Qd6 22.cxd4=] 21...Nxf4 [21...Rxf4?! 22.Nxd4 Nxd4 23.cxd4=] 22.Nxd4? [White crumbles in face of a dire situation.] [Better is 22.Rfe1 dxc3 23.Bf1] 22...Nxd4 23.cxd4 Nxe2 24.d5 exd5 25.exd5 Rxf1+ [25...Nc3 and Black can already relax 26.Rxf8+ Rxf8 27.Ra1] 26.Rxf1 Rc8 27.Nb1 Rc1 28.Rxc1 Nxc1 29.a3 Kf7 30.Nc3 Kf6 31.Ne4+ Ke5 32.Nc5 Bc8 33.Kg1 Kxd5 34.Kf2 a5! [D]



[Deflection: c5] 35.Ke3 [35.bxa5 Kxc5 (Text cont. next col.)

(Cont. from prev.col.) Deflection: ...35.-- axb4 Threat 36.axb4 Na2 Combination] 35...axb4 36.axb4 Kc4 37.Ne4 Kxb4 38.Nd6 Be6 39.g3 Nb3 40.Ke4 Bg4 41.h4 Kc5 42.Nxb5 Kxb5 43.Kf4 Bd7 44.g4 Nd4 45.g5 g6 46.Ke5 Nf3+ 47.Kf6 Nxh4 48.Kg7 Kc5 49.Kxh7 Kd5 [D]



0-1

Round: 5 (As scheduled)

Submitted by Charles with his comments and selected Fritz comments [shown thusly].

White: Steve Drummond (1200)

Black: Charles Siniari (1205)

Date: 2/6/2015 (As scheduled)

[D11: Slav Defense: 3 Nf3 sidelines and 3...Nf6 4 e3 Bg4] 1.d4 d5 2.c4 c6 3.Nf3 Nf6 4.Bf4 e6 5.c5 h6 6.e3 b6 7.b4 Na6 [7...g5!? must definitely be considered 8.Bxb8 Rxb8=] 8.a3 [8.Qa4!? b5 9.Qb3] 8...g5 9.Be5 Rg8 10.Nc3 Ng4 [10...g4 11.Bxf6 Qxf6 12.Ne5] 11.b5 [11.Qa4 Nb8 12.Bxb8 Rxb8] 11...Nxc5 12.dxc5 [Better is 12.Bg3!? Ne4 13.Nxe4 dxe4 14.Nd2] 12...Nxe5 13.Nxe5 Bg7 [D]



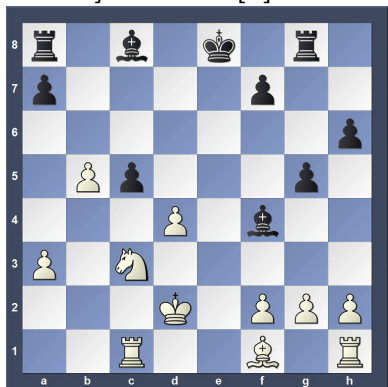
(Text cont.p.2)

(Cont. from p. 1) (Charles - Skewering three pieces.) *Black threatens to win material: Bg7xe5* **14.Nxc6?** [Letting the wind out of his own sails. A classical outpost.] [Better is 14.f4 bxc5 15.bxc6 gxf4 16.exf4 Bxe5 17.fxe5] **14...Qf6?**

[Throws away the game] [Better is 14...Bxc3+ 15.Ke2 Qf6] **15.Qd4** [Better is 15.Rc1 makes it even easier for White 15...Bb7 16.Be2] **15...e5?**

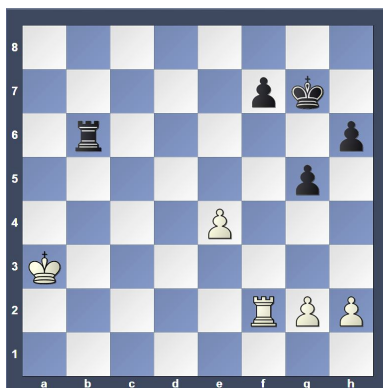
(Charles - My thinking with 15...e5 was to focus the exchanges on e5 to win back a minor piece. After making this move I saw white had 16. Qxd5 winning a pawn and invading black's camp. 16...Be6 17.Qd6 bxc5 and it's very uncomfortable for black.) [An oversight. But Black was lost anyway.] [Better is 15...Qxd4 16.exd4 bxc5] **16.Qxe5+** [Better is 16.Qxd5 nails it down 16...Be6 17.Qd6] **16...Qxe5**

17.Nxe5 Bxe5 18.Kd2 [Better is 18.Rc1² and White has air to breath] **18...bxc5 19.Rc1 d4 20.exd4?** [Throwing away the advantage.] [Better is 20.Ne4 is a viable option 20...dxe3+ 21.fxe3=] **20...Bf4+** [D]

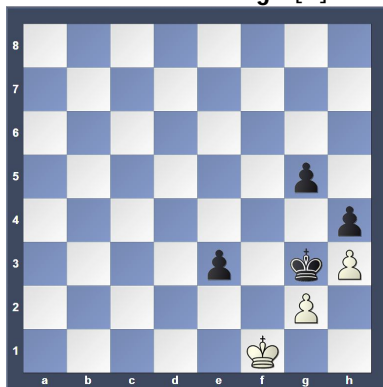


21.Kc2 Bxc1 22.Kxc1 cxd4 23.Nd5 (Charles - Seeing the fork on c7 I decided to move my rook on the a file to threaten the b pawn. I didn't see the fork on f6. I should have moved my king instead and taken away both rooks to preserve black's advantage.) **23...Rb8?** [Better is 23...Kf8 Black would have gained the upper hand 24.Kd2 Bb7] **24.Nf6+ Kf8 25.Nxg8 Kxg8 26.Bd3 Bb7 27.f3 Rc8+ 28.Kb2** (Charles - Moving the king toward this side of the board weakens white's position and would prove to be a target later for black.) **28...Re8?** [Better is 28...Kg7!?= and Black is still in the game] **29.Rc1 Re7 30.Rc4 Rd7 31.a4 Kg7 32.a5 a6?** [Better is 32...g4 33.a6 Ba8 34.fxg4 Bxg2] **33.b6 Rd5 34.Be4** [Better is 34.Rc7 and White has triumphed 34...Ba8 35.Ra7] **34...Rb5+** (Text cont. next col.)

(Cont. from prev. col.) **35.Ka3** [Better is 35.Kc2 and White wins 35...Bxe4+ 36.fxe4] **35...Bxe4 36.fxe4 Rxa5+? 37.Ra4 Rb5 38.Rxa6** [Better is 38.Rb4 secures the point 38...Re5 39.b7] **38...d3 39.Ra4 d2** [39...Rxb6!? 40.Rd4 Rf6 41.Rxd3 Rf2] **40.Rd4 Rb1 41.Rxd2 Rxb6 42.Rf2** [D]



(Charles - White should protect the e pawn with 42. Re2 or Rd4) **42...Re6 43.Re2 f5 44.Kb4? Rxe4+ 45.Rxe4 fxe4 46.Kc4 Kf6 47.Kd4 Kf5 48.Ke3 h5 49.Kf2 h4 50.h3 Kf4 51.Kg1 e3 52.Kf1 Ke4 53.Ke2 Kf4 54.Kf1 Kg3** [D]



(Charles - White Resigns. White was in zugzwang for the last several moves; burdened by having to make a legal move. Black has many paths to victory involving the queening of at least one pawn.) **0-1**

Round: 6 (As scheduled)

Submitted by Eric with his comments and selected Fritz comments [shown thusly].

White: Eric Funk (2043)

Black: Alex MacFarlane (1874)

Date: 2/13/2015 (As scheduled)

(Text cont. next col.)

(Cont. from prev. col.) [B06: Modern Defense] **1.e4 g6 2.d4 d6 3.c3 Bg7 4.f4 Nd7 5.Nf3 e6 6.Bd3 f5** [D]



7.exf5 gxf5 8.Qe2 Qe7 9.0-0 Nb6 10.Re1 h6 11.a4 Bd7 12.a5 Nc8? [12...Nd5 13.a6 b5 14.Bxb5] **13.Qc2 Nf6 14.Bxf5!** [Deflection: e6] **14...0-0** [14...exf5 15.Rxe7+ Deflection Pinning] **15.Nh4 exf5** [D]



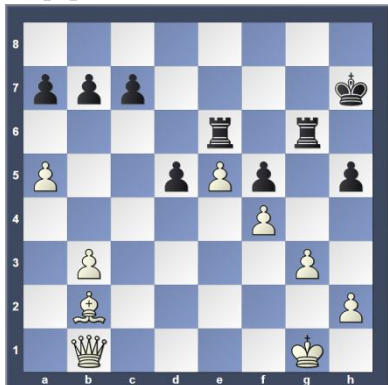
(Eric - Black sacrifices material for activity which looks like the right call.) [Better is 15...Re8] **16.Rxe7 Nxe7 17.Nd2** (Eric - Grabbing an extra pawn with Qxb7 was possible, but I wanted to get my queenside pieces developed.) [17.Qb3+ keeps an even firmer grip 17...Ned5 18.c4 Ne7] **17...Bc6 18.b3 Ne4 19.Bb2 Nxd2 20.Qxd2 Be4 21.Re1 Bf6 22.Qf2 Kh7 23.Nf3 Rg8 24.g3 Rg4** [24...b6 25.Nd2 Bb7 26.c4] **25.Nd2 Bc6 26.Re6 Nd5** [D]



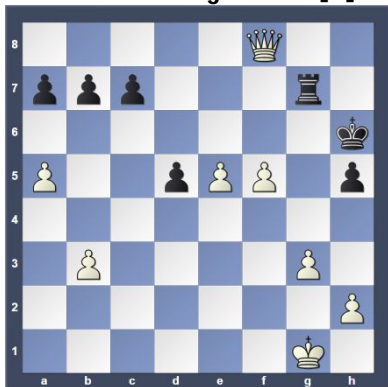
(Text cont. p.3)

(Cont. from p.2) (Eric - Black threatens to win material with 27.... Nxf4 since 28. Rxf6 runs into a deadly knight fork on h3. Surprisingly, this move is apparently a mistake.) [26...Rg6 does not improve anything 27.c4 Ng8 28.Re3]

27.Qe1 (Eric - Now white has turned the tables and is threatening to win material with 28. c4.) **27...Bd7** (Eric - After the text move black's game falls apart. 27.... Rf8, which leads to ridiculous complications, was a better try. For example: after 27.... Rf8 28. c4 Nxf4 29. Rxf6 Rxf6 30. Qe7+ Kg6 31. d5 Rf7 32. Qd8 white (finally!) emerges on top because black cannot stop both the threat of dxc6 and the threat of Qg8+.) [27...Bg7 hoping against hope 28.c4 Nxf4] **28.c4!** [the knockout punch] **28...Rg6** [With the idea 28...-- 29.cxd5 Wins material] **29.cxd5 Bxe6** **30.dxe6** [30.Qxe6?! Bxd4+ 31.Bxd4 Rxe6 32.dxe6 Re8 33.Bxa7 Kg7] **30...Re8** **31.Nc4** [Better is 31.Qb1 seems even better 31...Rxe6 32.Qxf5 Re2] **31...d5** [31...Rxe6 desperation 32.Qb4 b6] **32.Ne5 Rxe6** **33.Qb1 Bxe5** **34.dxe5 h5** [D]



35.Qxf5 Kh6 **36.Ba3 Re8** **37.Bf8+ Rxf8** **38.Qxf8+ Rg7** **39.f5** [D]



1-0

Round: 6 (Scheduled as round 5)

Submitted by Eric with his comments and selected Fritz comments [shown thusly].

White: Don Funk (1707)

Black: Eric Funk (2043)

Date: 2/13/2015 (Scheduled Date was 2/6/15)

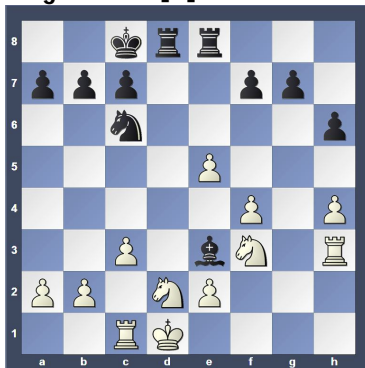
(Text cont. next col.)

(Cont. from prev. col.) **1.f4 e5** **2.fxe5 d6** (Eric - Inviting Fromm's Gambit: 3. exd6 Bxd6, with difficult play for both sides.) **3.d4 dxe5** **4.dxe5 Qxd1+ 5.Kxd1 Nc6** **6.Bf4 Bf5** **7.c3 0-0-0+ [D]**



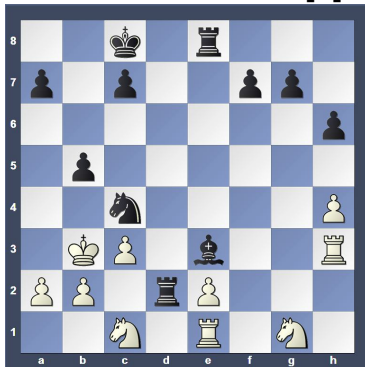
(Eric - Black is already slightly better.)

8.Nd2 h6 **9.h4 Nge7** **10.Ngf3 Nd5** **11.g3 Bc5** **12.Rc1 Rhe8** **13.Bh3 Bxh3** **14.Rxh3 Nxf4** **15.gxf4 Be3** [D]



(Eric - Black will regain the pawn with interest.)

16.Kc2 Bxf4 **17.Re1 Nxe5** **18.Nb3 Nc4** **19.Ng1 Be3** **20.Nc1 Rd2+** **21.Kb3 b5** [D]

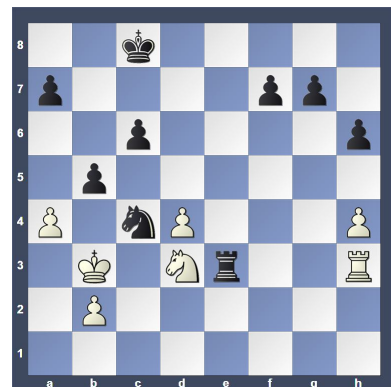


(Eric - Threatens 22.... Rxb2#.)

22.Nd3 Bc5 (Text cont. next col.)

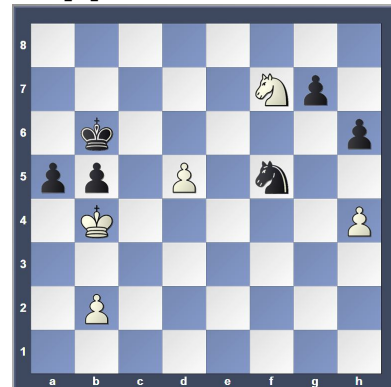
(Some blank space here because I had to eliminate a diagram somewhere to keep the "pdf" file size below 2MB -- Olin.)

(Cont. from prev. col.) (Eric - The bishop cannot be captured for the next few moves because of Rxb2#. Black's immediate threat is 23.... Na5#.) **23.a4 c6** **24.Nf3 Rdx2** **25.Rxe2 Rxe2** **26.Nd4 Bxd4** **27.cxd4 Re3** [D]



(Eric - Forces a winning knight and pawn ending.)

28.Rxe3 Nxe3 **29.Ne5 Kc7** **30.Nxf7 Nf5** **31.axb5 cxb5** **32.Kb4 Kb6** **33.d5 a5+** [D]



0-1

Round: 6 (Scheduled was Round 5)

Submitted by Bob and Doug from copy of game score sheet with selected Fritz comments [shown thusly].

White: Bob Kampia (1738)

Black: Doug Kern (1966)

Date: 2/13/2015 (Scheduled was 2/6/15)

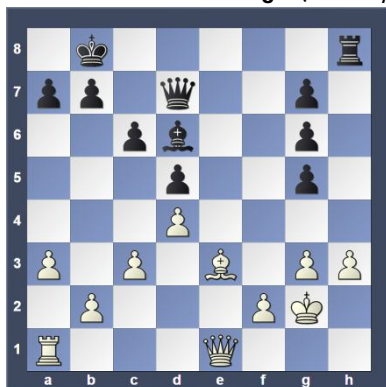
[C01: French: Exchange Variation]

1.e4 e6 **2.d4 d5** **3.exd5 exd5** **4.Bd3 Bd6** **5.Nc3 c6** **6.Nf3 Bg4** **7.0-0 Ne7** **8.Re1 Qc7** **9.h3 Bh5** **10.Re3 Nd7** **11.Qe1** [D] (p.4) **11...Bxf3** **12.Rxf3 Nf8** **13.a3 Ne6** **14.Ne2 Ng6** **15.g3 0-0-0** **16.Kg2 Kb8** **17.c3 h6** **18.Bxg6 fxd6** **19.Ng1 Rde8** **20.Re3 Qd7** **21.Nf3 Ng5** [21...Nc7!]=] **22.Nxg5 Rxe3** **23.Bxe3 hxg5** [D] (p.4) **24.g4 Re8** **25.Qd2 Qe6** **26.Re1** (Text cont. p.4)

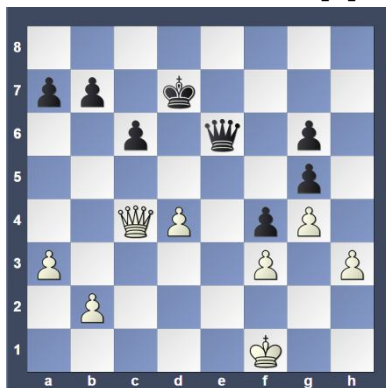
Position after 11.Qe1 (From p.3)



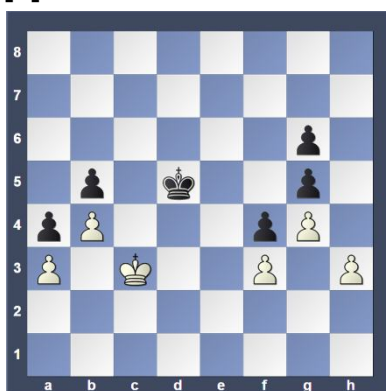
Position after 23...hxg5 (From p.3)



(Cont. from p.3) [26.Bxg5!? Qe4+ 27.Kg1] 26...Kc8 27.f3 Bf4 28.Kf2 Kd7 29.Re2 Qd6 30.Bxf4 Rxe2+ 31.Kxe2 gxf4 32.Kf1 g5 33.Qc2 g6 34.c4 dxc4 35.Qxc4 Qe6 [D]



36.Qxe6+ Kxe6 37.Ke2 Kd5 38.Kd3 c5 39.dxc5 Kxc5 40.Kc3 a5 41.b3 Kd5 42.Kd3 b6 43.Kc3 b5 44.b4 a4 [D]



½-½

Round: 6 (As scheduled)

Submitted by Shawn by copy of score sheet with selected Fritz comments [shown thusly].

White: Shawn Curtis (1472)

Black: Will Moyer (1473)

Date: 2/13/2015

[A80: Dutch Defense: Unusual White second moves] 1.d4 d5 2.e4 dxe4

3.Nc3 f5 4.Bc4 e6 5.f3 exf3

6.Nxf3 Nf6 7.Bg5 h6 8.Bh4 g5

9.Bf2 Bb4 10.Ne5 (Better is

10.0-0=) 10...Ne4? [gives away a

clear win. An ideal square for the

black knight.] (Better is 10...Nbd7

11.Qe2 Nxe5 12.Qxe5 Qe7] 11.Qh5+

Ke7 [D]



12.Qf7+ Kd6 13.0-0-0 Nxc3

[13...Bxc3 cannot change destiny

14.d5 Kxe5 15.Qg7+ Kd6 16.dxe6+

(16.bxc3?? White must leave the

bishop standing 16...e5 17.Rhe1 Rg8

18.Qxh6+ Qf6 19.Qxf6+ Nxf6-+)

16...Kc6 17.bxc3 Bxe6 18.Rxd8 Rxd8

19.Bxe6 Nxf2 20.Rf1] 14.bxc3 (Bet-

ter is 14.d5 secures the point

14...Nxd1 15.Rxd1 Kxe5 16.Bd4+ Kd6

17.dxe6] 14...Ba3+ 15.Kb1 c6

[15...Rf8 doesn't change the outcome

of the game 16.d5!! Mate threat

16...Rxf7 17.Nxf7+ Ke7 18.Nxd8]

16.Bb3 b5 17.c4 Nd7 18.c5+

(Better is 18.d5 and White has pre-

vailled 18...Kc7 19.dxe6] 18...Kc7

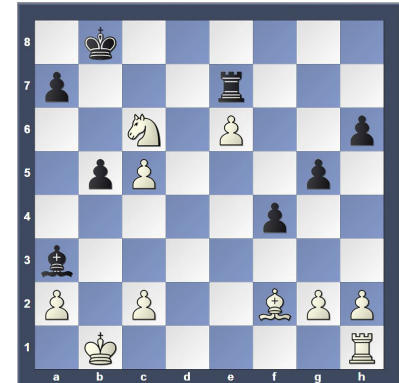
19.Bxe6 f4? [D]



[Simply worsens the situation.

(Text cont. next col.)

(Cont. from prev. col.) Better is 19...Qf6 20.Rd3 b4 21.Bxf5 Rf8] 20.d5 Qf6 [20...Qe8 the last chance for counter play 21.d6+ Kb7 22.Bxd7 Bxd7 23.Qxd7+ Qxd7 24.Nxd7 Rh7] 21.Bxd7 (Better is 21.d6+ finishes off the opponent 21...Kb7 22.Bxd7 Qxf7 23.Bxc6+ (23.Nxf7?! Bxd7 24.Nxh8 Rxh8) 23...Ka6 24.Nxf7 (24.Bxa8?! is not possible 24...Qf6 25.Rd3 b4)] 21...Qxf7 22.Nxf7 (Better is 22.d6+ makes it even easier for White 22...Kb8 23.Nxf7 Bxd7 24.Nxh8 Bb4] 22...Rh7? 23.Be6 Bxe6 24.dxe6 Re8 [24...Rxf7 otherwise it's curtains at once 25.exf7 Rf8] 25.Rd7+ Kb8 26.Rd8+ Rxd8 27.Nxd8 Re7 28.Nxc6+ [D]



0-1

Round: 6 (As scheduled)

Submitted by Craig with selected Fritz comments [shown thusly].

White: Greg Sulat (1550)

Black: Craig Gerland (1481)

Date: 2/13/2015 (As scheduled)

[B72: Sicilian Dragon: 6 Be3, lines

with h3+Bc4 and sidelines] 1.e4 c5

2.Nf3 g6 3.d4 cxd4 4.Nxd4 Nf6

5.Nc3 Nc6 6.Be3 Bg7 7.Be2 [D]



7...d6 8.Qd2 Ng4 9.Bxg4 Bxg4

10.f3 Bd7 11.0-0-0 0-0 12.h4

Ne5 13.Bh6 [D] (p.5) [Better is

13.b3=] 13...Qb6? [weakening the

position] [Better is 13...Nc4 14.Qg5

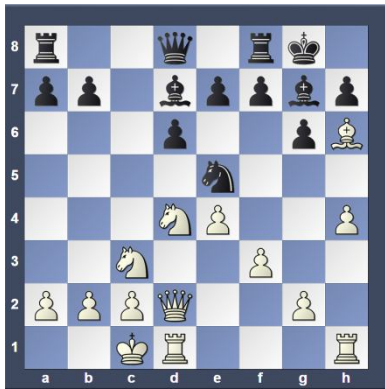
Qb6] 14.Nd5 Qd8 15.Bxg7 Kxg7

16.h5 Rh8 17.hxg6 hxg6 (Text

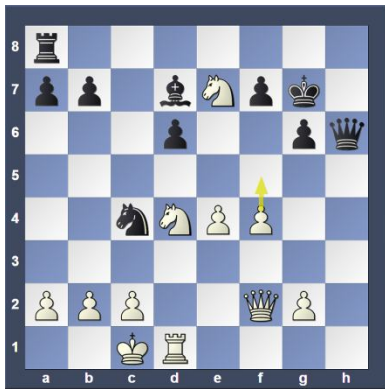
cont. p.5)

Page 4 of 6

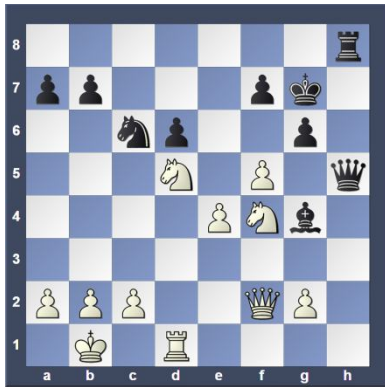
Position after 13.Bh6 (From p.4)



(Cont. from p.4) 18.Rxh8 Qxh8
19.Nxe7 Qh6 20.f4 [Better is
20.Qxh6+!? Kxh6 21.Ne2] 20...Nc4
21.Qf2 [D]



[White prepares the advance f5]
21...Rh8 22.Ne2 Bg4 23.Nd5 Ne5
24.Kb1 Nc6 25.f5 Qh5 26.Nef4 [D]



[26.Nf6 Qg5 27.Nxg4 Qxg4 28.fxg6 Qxg6]
26...Qg5? [Better is 26...Qh4!? is worth
looking at 27.Qxh4 Rxh4]
27.Re1 gxf5 28.exf5 Bxf5 29.Nh3
Kf8 [D] (Next col.)

Round: 6 (Scheduled as Round 5)

Submitted by Wiktor's copy of score
sheet with selected Fritz comments
[shown thusly].

White: Wiktor Strauss, (1664)

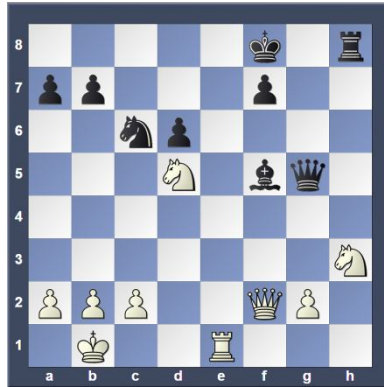
Black: Matt Martello (1970)

Date: 2/13/2015 (Scheduled

Date was 2/6/15)

(Text cont. next col.)

Position after 29...Kf8 (From
prev. col.)



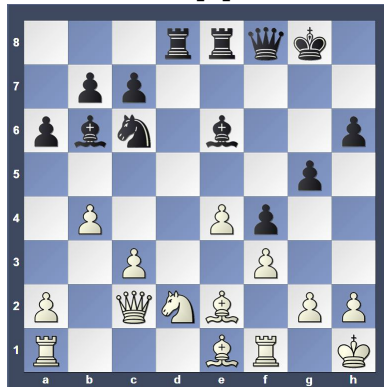
1-0

(Cont. from prev. col.)

[C44: Ponziani Opening and Scotch
Gambit] 1.e4 e5 2.Nf3 Nc6 3.c3
Nf6 4.d3 Bc5 5.Be2 0-0 6.0-0 h6
7.Nbd2 a6 [D]

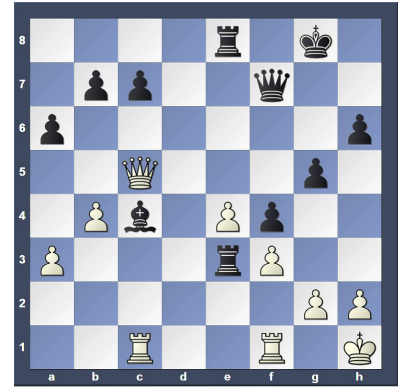


8.Nc4 Re8 9.Ne3 d5 10.Qc2
dxe4 11.dxe4 Qe7 12.b4 Bb6
13.Bc4 Nh5 [Better is 13...Be1?
should not be overlooked 14.Be2
Bc8=] 14.Nd5 Qf8 15.Be2 Nf4
16.Nxf4 [16.Nxb6?! cxb6 17.Rd1
Qe7=] 16...exf4 17.Bxf4 g5
18.Bg3 Be6 19.Nd2 Rad8 20.Kh1
f5 21.f3 [Better is 21.f4!? Be3
22.Nc4 Bxf4 23.Bxf4 gxf4 24.Rxf4]
21...f4 22.Be1 [D]

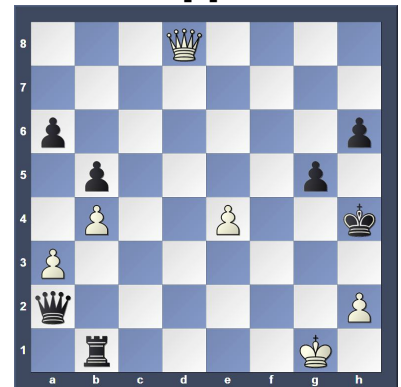


22...Ne5 [The knight is not easily
driven from e5] 23.a3 [23.Nb3!?
must definitely be considered]
23...Qf7 24.c4 Be3 25.Rc1 Rd7
26.Bf2? [Better is 26.Qc3 is just
about the only chance 26...Nc6
(Text cont. next col.)

(Cont. from prev. col.) 27.Nb3
Bxc1 28.Qxc1] 26...Rxd2 27.Qc3
Rxe2 28.Bxe3 Rxe3 29.Qxe5
Bxc4 30.Qc5 [D]



30...Bxf1 31.Rxf1 Rd8 32.g3
Rdd3 33.gxf4 Rxf3 34.Rxf3 Rxf3
35.f5 Qa2 36.Kg1 Rd3 37.Qc1 b5
38.f6 Rb3 39.f7+ Kxf7 40.Qxc7+
Kg6 41.Qc6+ Kh5 42.Qe8+ Kh4
43.Qd8 Rb1+ [D]



0-1

Round: 6 (As scheduled)

Submitted by Olin with my comments
and selected Fritz comments [shown
thusly].

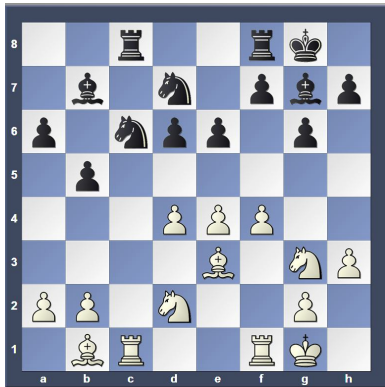
**White: Michael Strauss
(1575)**

Black: Olin Mastin (1546)

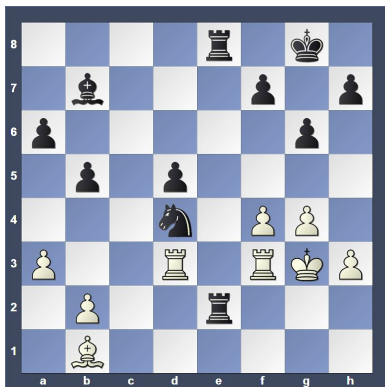
**Date: 2/13/2015 (As sched-
uled)**

1.e4 c5 2.c3 Nc6 3.Nf3 g6 4.d4
cxd4 5.cxd4 Bg7 6.Nc3 d6 7.h3
e6 8.Be3 Nf6 9.Rc1 0-0 10.Bd3
a6 11.0-0 b5 12.Ne2 Bb7 13.Ng3
Rc8 14.Qd2 Qa5 15.Bb1 Qxd2
16.Nxd2 Nd7 17.f4? [D] (p.6)
[Gives the opponent new chances]
[Better is 17.Ne2= would allow White
to play on] 17...Bxd4 18.Bxd4
Nxd4 19.Rcd1 Rc7 20.Nf3 Nxf3+
21.Rxf3 Rfc8 22.Rfd3 [Better is
22.Rxd6!? is interesting 22...Rc1+
23.Rf1 Rxf1+ 24.Nxf1] 22... d5
23.exd5 exd5 24.Ne2 Nf6 25.g4
Re7 26.Kf2 Rce8 27.Nd4 Ne4+
28.Kg2 Nc5 29.Rf3 Ne6 30.a3
Nxd4 (Text cont. p.6)

Position after 17.f4? (From p.5)



(Cont. from p. 5) **31.Rdd3** [Better is 31.Rxd4 Re2+ 32.Rf2] **31... Re2+ 32.Kg3 [D]**



(Olin -- White resigned here!) **0-1**

This concludes this issue. I have to keep the final size of the "pdf" file below 2MB or the file will not upload.

There will be one more issue to finish covering the 2015 Winter Robin.

Use any blank space for notes.

Use this space for notes.

Other places to play chess:

The below are for friendly off hand non-rated games (clocks optional). Bring chess set.

Monday evenings about 6:00 to 10:00 PM, "Starbucks", 10 North Main Street, Doylestown, PA

Tuesday mornings 9:30 AM to Noon at the Pennridge Community Senior Center in Silverdale, PA. Located on route 113 near route 152

Wednesday evenings 7:30 to 10:00 PM, "Christ Reformed Church at Indian Creek" located at 171 Church Road (intersection with Cowpath Road), Telford, PA.

(**Note:** Temporarily closed until after Easter because of Wednesday evening Lenten services.)

Daily, Monday thru Friday 8 to 4, Encore Experiences, (Senior Center), 312 Alumni Avenue, Harleysville, PA

Allentown Center City Chess Club

Offer (from Eric C. Johnson): "For any of our events -- If three or more Lansdale players carpool together -- the designated driver plays for free!"

<http://www.freewebs.com/allentowncentercitychessclub>