

# ~ En Passant ~

Newsletter of the North Penn Chess Club of Lansdale, PA – Winter 2015, Part 2

E. Olin Mastin, Editor

North Penn Chess Club  
500 West Main Street  
Lansdale, PA 19446

[www.northpennchessclub.org](http://www.northpennchessclub.org)  
(215) 699-8418 [donfunk@msn.com](mailto:donfunk@msn.com)

This issue is a continuation featuring games played in the 2015 NPCC Winter Robin. As previously stated, I intend to publish the games in a chronological sequence as much as possible. A word about that: Some of the rounds and games were played out of the sequence as set up by the pairing software. Therefore I decided to show the actual date and round the game was played and note what the scheduled round was (or vice versa). When I send the games into the USCF for rating the software will, of course, use the scheduled sequence.

Thanks to all for submitting games!

## Games from the NPCC 2015 Winter Robin Tournament: Round: 2 (Was scheduled as Round 1)

Submitted by Joe with his comments and selected Fritz comments [shown thusly].

**White: Joe Mucerino (2064)**

**Black: Don Funk (1707)**

**Date: 1/16/2015 (Actual Date)**  
**(Scheduled date was 1/9/2015)**

[D04: Colle System] (Joe - This game was played on my 37th birthday.) **1.d4 d5**  
**2.Nf3 Nf6 3.e3 c5 4.c3 Nbd7 5.Bd3**  
**g6 6.Nbd2 Bg7 7.0-0 0-0 8.Qe2 Qc7**  
**9.e4 dxe4 10.Nxe4 cxd4 11.cxd4 [D]**



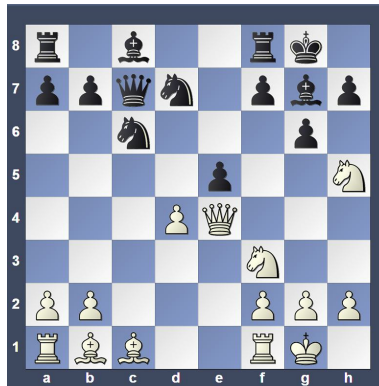
(Text cont. next col.)

(Cont. from prev.col.) (Joe - White does not mind the isolated pawn, because it prevents the knight on d7 from going to c5 or e5.) **11...Nd5**

**12.Ng3?!** (Joe - I could not figure out what to do. Rybka suggests 12.Bd2, which I considered, but after 12...Nf4 white would capture with 13.Bxf4, which, in effect, loses a tempo. I wanted to avoid that but apparently that was the way to go.) **12...e5**

**13.Qe4 Nb4 14.Bb1 Nc6?!** (Joe - Black can maintain his slight advantage with 14...exd4. After 5.Nxd4 Nc5, black is very comfortable.)

[14...exd4!? 15.Qh4 Ne5 16.Nxe5 Qxe5] **15.Nh5!?** [D]



(Joe - Trying to get this knight back into the game and capture the bishop on g7. Of course my knight cannot be captured because of mate on h7.)

**15...Nf6 16.Nxf6+ Bxf6 17.Bh6**  
**Re8 18.d5 Ne7 19.Bg5 Bg7**

**20.Rc1?!** (Joe - Waste of time.)

**20...Qd6** [Exerts pressure on the isolated pawn.] **21.Rd1 Bf5**

**22.Qc4 e4** (Joe - A very logical move, but black should have gained a tempo with 22...Rac8 first.) [22...Rac8

23.Qb3 e4] **23.Nd4?** [23.Bxe4!? is an interesting alternative 23...Rac8

24.Qd3 Bxe4 25.Qxe4] **23...Be5**

[23...Rac8!? 24.Qe2 Qxd5] **24.h3**

**f6? [D]** (Next col.) (Joe - Black's first serious mistake of the game. He opens the a2-g8 diagonal, where my queen already is. After Nb5 and black's queen moves, there could be a nasty discovered check. Better is 24...Rac8 or 24...Rad8.) [24...Rac8!? is worth consideration 25.Qb3 Rc5]

**25.Be3** (Joe - There were no discovered

(Text cont. next col.)

**Position after 24...f6? (From prev.col.)**



(Cont. from prev.col.) checks that would win me material greater than my bishop on g5 that was under attack, so I decided to protect it first.)

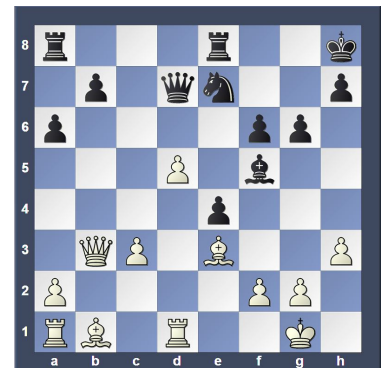
[Not 25.Nxf5 Nxf5 (25...gxf5?! 26.Bc1) 26.Bd2 Bxb2 27.Bxe4 Bxa1

28.Bxf5 gxf5 29.Rxa1 Re4] **25...Kh8**

**26.Nb5** [Inferior is 26.Nxf5 Nxf5 27.Bxe4 Nxe3 28.fxe3 Qb6]

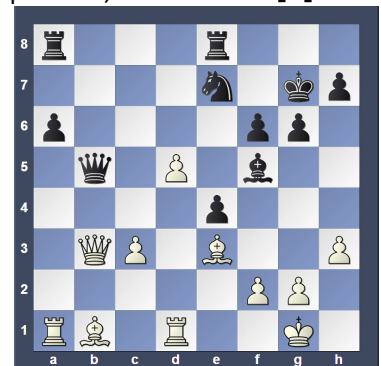
**26...Qd7 27.Qb3 a6 28.Nc3**

**Bxc3 29.bxc3 [D]**



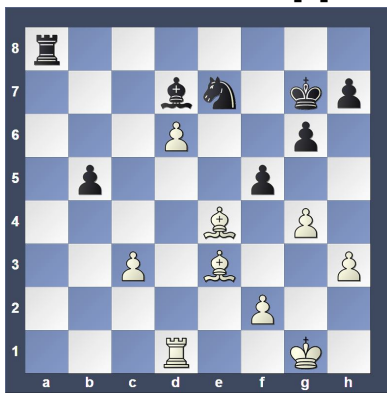
(Joe - If this pawn gets to c4, I will have a protected passed pawn on d5.) **29...Kg7 30.a4 b5 31.axb5**

(Joe - Rybka really liked 31.d6. The pawn becomes a real thorn in black's position.) **31...Qxb5?? [D]**

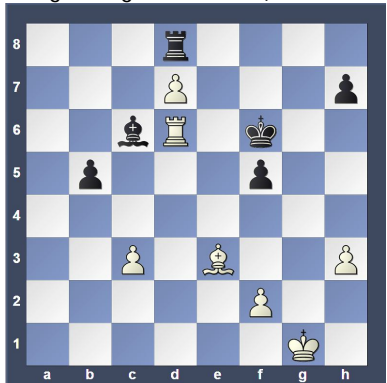


(Joe - This is really (Text cont.p.2)

(Cont. from p. 1) the ballgame. White will trade down into a winning position.)  
 32.Qxb5 axb5 33.Rxa8 Rxa8 34.g4 Bd7 35.Bxe4 f5 36.d6? [D]



[Better is 36.Bh1 Ra6 37.Bc5] **36...Nc6?**  
 (Joe - Black should have captured on e4.)  
 [Better is 36...fxe4 37.dxe7 Be8] **37.gxf5 gxf5 38.Bd5** (Joe - This wins, but the immediate 38.Bxc6 is stronger.)  
**38...Kf6 39.Bxc6 Bxc6 40.d7 Rd8**  
 (Joe - No help is 40...Rg8+ 41.Kf1 Ke7 42.Bg5+ Rxc5 43.d8=Q+.) **41.Rd6+ [D]**



[41.Rd6+ Ke5 42.Rxc6 Rxd7 43.Rc5+ Rd5 44.Bf4+ Ke6 45.Rxd5 Kxd5 46.Kg2] **1-0**

**Round: 2 (Actual Round as scheduled)**

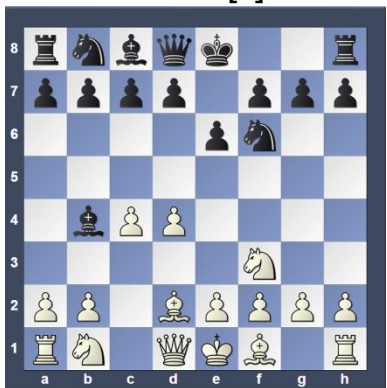
Submitted by Bob with his comments and selected Fritz comments [shown thusly].

**White: Bob Pisciotta (1468)**

**Black: John Russo (1366)**

**Date: 1/16/2015 (Actual Date as scheduled)**

[E11: Bogo-Indian] **1.d4 Nf6 2.c4 e6 3.Nf3 Bb4+ 4.Bd2 [D]**



(Text cont. next col.)

(Cont. from prev.col.)

**4...Bxd2+ 5.Nbxd2 0-0 6.e3 b6 7.Bd3 Bb7 8.0-0 d6 9.Qc2 Bxf3 10.Nxf3? Nbd7 11.Rfe1 c5 12.d5 e5 13.e4 Ng4 14.h3 Nh6 [D]**



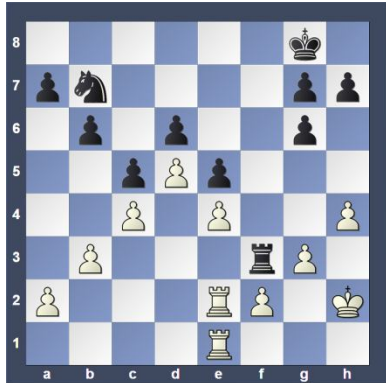
(Bob - The knight doesn't belong here on h6. It was better placed on f6.)

[14...Ngf6 15.g3] **15.Qd2 Qf6 16.Qg5 Qg6 [16...Qxg5 17.Nxg5 g6 18.g3] 17.Qxg6 fxc6 18.Ng5 Nf6 19.Re3 Nf7 20.Ne6 Rfd8? [D]**

(Bob - The knight doesn't belong here on h6. It was better placed on f6.)

[14...Ngf6 15.g3] **15.Qd2 Qf6 16.Qg5 Qg6 [16...Qxg5 17.Nxg5 g6 18.g3] 17.Qxg6 fxc6 18.Ng5 Nf6 19.Re3 Nf7 20.Ne6 Rfd8?** (Bob - Obviously, an outright blunder.) [Better is 20...Rfc8 would hold out]

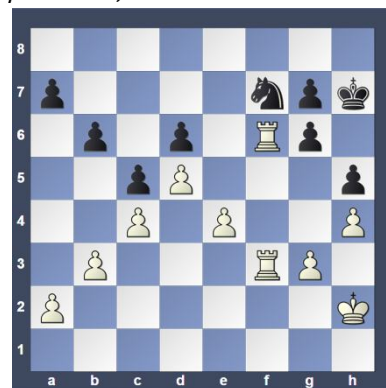
**21.Nxd8 Rxd8 22.Rf1 Nh5 23.Be2 Nf4 24.Kh2 Rf8 25.g3 Nxe2 26.Rxe2 Nd8 27.h4 Nb7 28.b3 Rf3 29.Rfe1 [D]**



(Bob - This is a mistake. The rook needs to be on the f file to protect the f2 pawn freeing the e2 rook to move to e3. I moved it back to f1 on the next move.) **29...h5 [29...Nd8 30.Kg2 Rf7 31.Rf1] 30.Rf1 Kh7 31.Re3 Rf6 32.f4 exf4 33.Rxf4 Nd8 34.Ref3 Nf7 35.Rxf6 [D]**

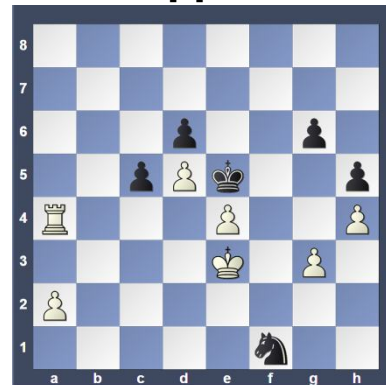
(Next col.) **35...gxf6 36.Rxf6 Kg7 37.Re6 a6 38.Re7 b5 39.Ra7 [Better is 39.Kg2 keeps an even firmer grip 39...Kf640.Re6+ Kg7] 39...bxc4 40.bxc4 Kf6 41.Kg2 Ne5 42.Rxa6 Nxc4 43.Kf2 Ke5** (Text cont. next col.)

**Position after 35.Rxf6 (From prev. col.)**

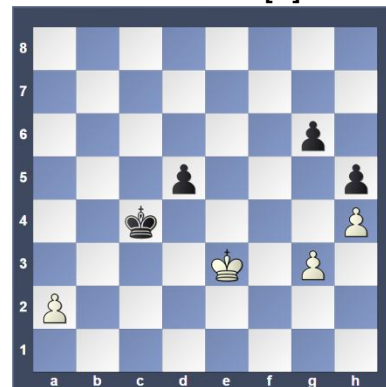


(Cont. from prev.col.)

**44.Ra4 Nd2 [44...Nb2 a last effort to resist the inevitable 45.Ra8 Kxe4] 45.Ke3 Nf1+ [D]**

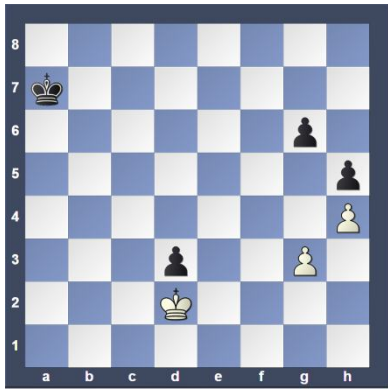


**46.Kf2 Nd2 47.Ra8 Nxe4+ 48.Ke3 Kxd5?** [Better is 48...Nxg3 49.a4 Nf5+ 50.Kd3 Kxd5 (50...Nxe4? capturing this pawn is a mistake 51.a5 Nf3 52.Re8+ Kxd5 53.a6 Ne5+ 54.Rxe5+ Kxe5 55.a7)] **49.Kf4 Kd4 50.Ra4+ c4 51.Rxc4+ Kxc4 52.Kxe4 d5+ 53.Ke3 [D]**

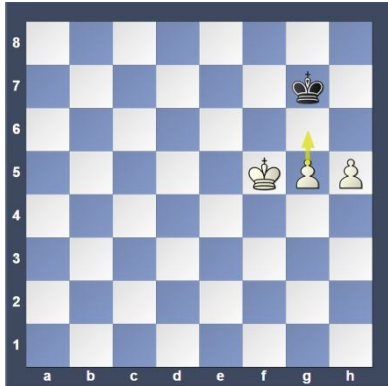


**53...d4+?** [overlooking an easy win] [Better is 53...Kc3 saving the game 54.Ke2 Kc2=] **54.Kd2 d3 55.a4 Kd4 56.a5 Kc5 57.a6 Kb6 58.a7 Kxa7 [D] (p.3) 59.Kxd3 Kb7 60.Ke4 Kc6 61.Ke5 Kd7 62.Kf6 Ke8 63.Kxg6 Kf8 64.Kxh5 Kg7 65.Kg5 Kh7 66.g4 Kg7 67.Kf5 Kh7 68.g5 Kg7 69.h5 [D] (p.3) [White prepares the advance g6] 69...Kh7** (Text cont. p.3)

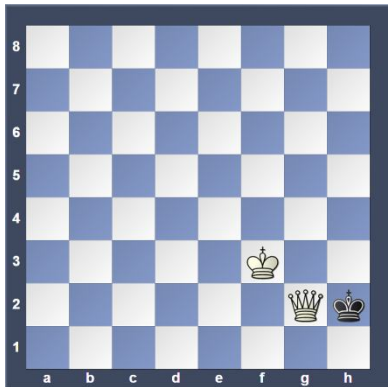
Position after 58...Kxa7 (From p.2)



Position after 69.h5 (From p.2)



(Cont. from p.2) 70.Kf6 Kg8 71.h6 Kh7 72.g6+ Kg8 73.h7+ Kh8 74.g7+ Kxh7 75.Kf7 Kh6 76.g8Q Kh5 77.Qg6+ Kh4 78.Kf6 Kh3 79.Kf5 Kh2 80.Kf4 Kh1 81.Kf3 Kh2 82.Qg2# [D]



1-0

Round: 2 (Was scheduled as Round 1)

Submitted by Eric with his comments and selected Fritz comments [shown thusly].

White: Bob Kampa (1738)

Black: Eric Funk (2043)

Date: 1/16/2015 (Actual Date) (Scheduled Date was 1/9/2015)

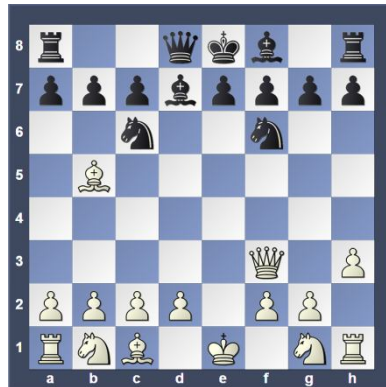
[B01: Scandinavian Defense] 1.e4 d5 2.exd5 Nf6 3.Bc4 Nxd5 4.Qf3 Nf6 5.h3 Nc6 6.Bb5 Bd7 [D] (Next col.)

7.Bxc6 [Better is 7.Ne2!? deserves consideration] 7...Bxc6 [7...bxc6?! 8.Qe2=]

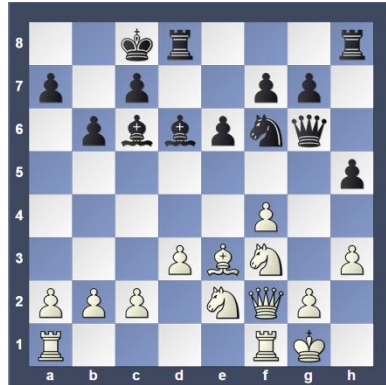
8.Qg3 e6 9.d3 Bd6 10.f4 Nh5 11.Qf2 Qf6 [Better is 11...g5!? 12.Nf3 gxf4]

12.Ne2 Qg6 13.0-0 0-0-0 [Better is 13...Bc5! 14.d4 Be7] 14.Be3 b6 (Text cont. next col.)

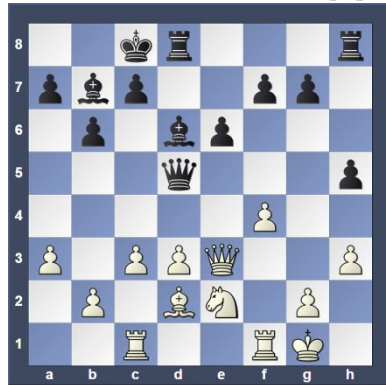
Position after 6...Bd7 (From prev. col.)



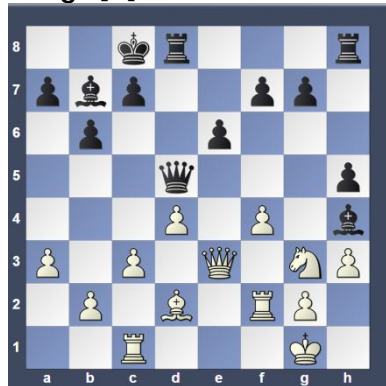
(Cont. from prev. col.) 15.Nd2 Nf6 16.Nf3 h5 [D]



17.Rac1 Nd5 18.Bd2 Qf6 19.Nfd4 Bb7 20.a3 Ne7 21.c3 [21.b4!? must be considered] 21...Nf5 22.Nxf5 Qxf5 23.Qe3 Qd5 [D]

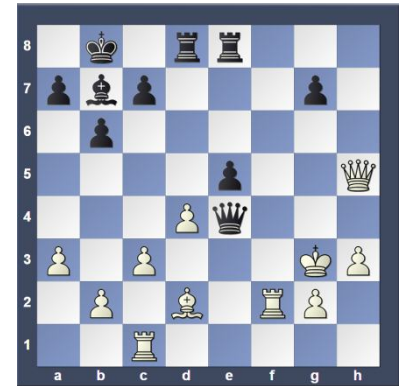


(Eric - Threatens mate.) [23...Bxa3!? 24.Nd4 Qg6 25.Rf2 Bxb2 26.f5 exf5 27.Nxf5] 24.Rf2 Be7 25.d4 Bh4 26.Ng3 [D]

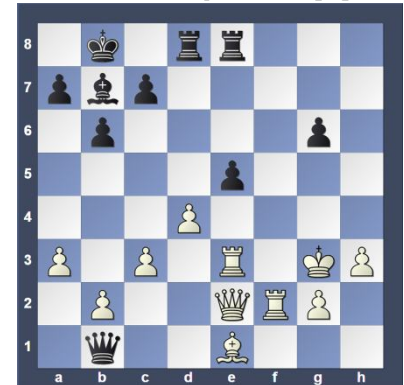


(Text cont. next col.)

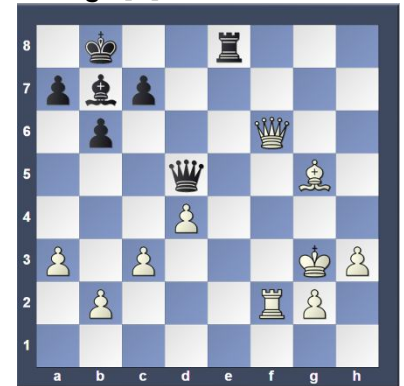
(Cont. from prev. col.) 26...f6 [26...g5!? 27.fxc5 Rhg8] 27.Kh2 Rhe8 28.Qd3 e5 (Eric - Allows white to simplify. 28.... g6 was the correct way to keep up the pressure since on 29. Qxg6 Rg8 white loses materia1.) 29.Qf5+ Kb8 30.fxe5 fxe5 31.Qxh5 Bxg3+ 32.Kxg3 Qe4 [D]



(Eric - Bad judgment. Black needs to play 32.... exd4 and accept a Queen trade which results in a likely drawn endgame.) [Better is 32...g6 would allow Black to play on 33.Qh6 exd4 34.cxd4 Qxd4=] 33.Re1 Qd3+ 34.Re3 Qb1 35.Be1 g6? [35...Bc6!? is the best option Black has 36.dxe5 Qc1=] 36.Qe2 [D]

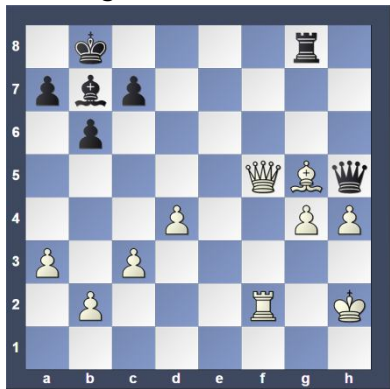


36...Qa2 37.Rxe5+- Rxe5 38.Qxe5 Qg8 39.Bd2 Re8 40.Qf6 Qd5 41.Bf4 g5? [Better is 41...Qe4] 42.Bxg5 [D]

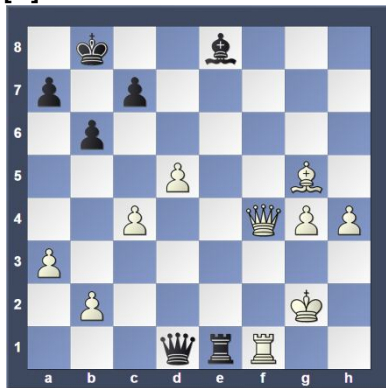


(Eric - White doesn't really need the extra pawn; 42. Be5, which keeps the g-file closed, seems more accurate.) (Text cont. p.4) Page 3 of 6

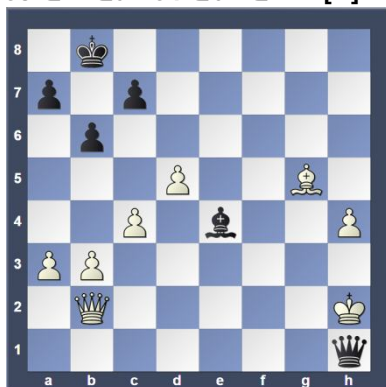
(Cont. from p.3) 42...Rg8 43.h4 Qe4  
44.Qe5 Qd3+ 45.Kh2 Qh7 46.Qf5  
Qh5 47.g4 [D]



(Eric - Opening the a8-h1 diagonal is risky but white should still be able to hold on and win.) 47...Qe8 48.Qf7 Qc8 49.Kg3 Bc6 50.Rf4 Re8 51.Rf2 Qa6? [Weakening the position.] [51...Rg8 52.d5 Bd7] 52.c4 Re1 53.d5 [53.Bf4!? and White can already relax 53...Qc8 54.Qg7 Re8] 53...Be8 54.Qf4 Qa4 55.Kg2 [55.Qd4!? keeps an even firmer grip 55...Bd7 56.Kh2 Rd1] 55...Qd1 56.Rf1 [D]

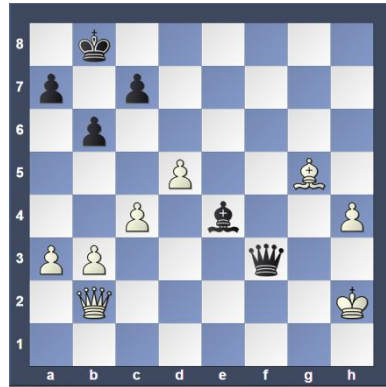


(Eric - White finally slips. After 56. Qf3 Rg1+ 57. Kh2 the checks come to a halt.) [Better is 56.Qf3 and White wins 56...Qd4 57.h5 Qxc4 58.Bf4] 56...Rxf1 57.Qxf1 Qxg4+ 58.Kh2 Bd7 59.b3 Bf5 60.Qg2 Qd4 61.Qd2 Qg4 62.Qe3 Be4 63.Qf2 Qd1 64.Qb2 Qh1+ [D]



(Eric - I could have tried for a win with 64.... Bc2, but after fighting uphill for 30 plus moves I was happy to force a draw.) 65.Kg3 Qf3+ 66.Kh2 [D] (Next col.)

Position after 66.Kh2 (From prev. col.)



1/2-1/2

**Round: 2 (As scheduled)**

Submitted by Craig with selected Fritz comments [shown thusly].

**White: Bill Champion (1595)**

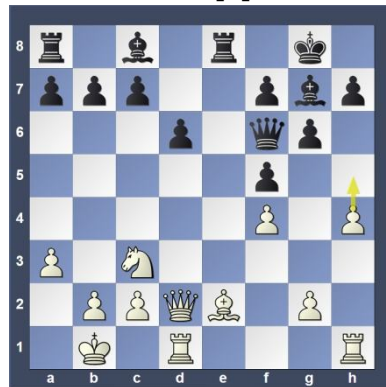
**Black: Craig Gerland (1482)**

**Date: 1/16/2015 (Scheduled Date)**

[A45: Trompowsky Attack] 1.d4 Nf6 2.Bg5 Ne4 3.Bh4 Nc6N 4.f3 Nf6 [D]

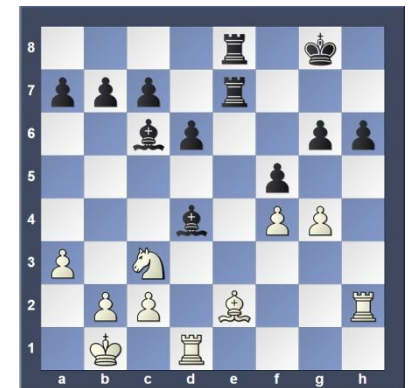


5.Bxf6 exf6 6.e3 g6 7.Ne2 Bg7 8.Nbc3 0-0 9.Ng3 [9.Nf4!?= might be a viable alternative] 9...f5 10.a3? [10.Nge2!?! and White can hope to survive] 10...Re8 11.Nge2 Rxe3 12.Qd2 [12.Kf2 Re7] 12...Nxd4 13.0-0-0 Nxe2+ 14.Bxe2 Re8 15.Kb1 d6 [15...c6 keeps an even firmer grip 16.h4] 16.h4 Qf6 17.f4 [D]

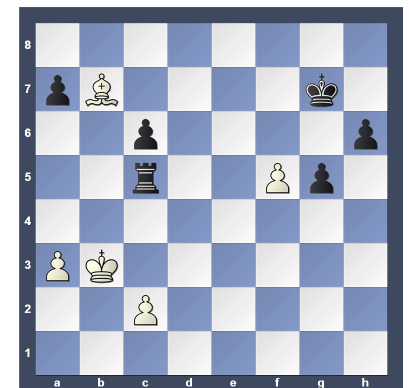


(Text cont. next col.)

(Cont. from prev. col.) [White intends h5] 17...Bd7 18.h5 Bc6 19.hxg6 fxc6 20.Rh2 Re7 21.Rdh1 h6 22.Rg1? [22.Bc4+ Kh7] 22...Rae8 [22...Qd4 makes it even easier for Black 23.Rd1 Qxd2 24.Rxd2 Bxc3 25.bxc3] 23.g4 [23.Bc4+ Kh7 24.Rd1 Re3] 23...Qd4 24.Qxd4 Bxd4 25.Rd1 [D]



[25.Bc4+ desperation 25...Kg7 26.Rg3 Re1+ 27.Ka2] 25...Bxc3 26.Bc4+ d5 [26...Kg7 and Black can already relax 27.gxf5 Re1 28.Rxe1 Rxe1+ 29.Ka2] 27.Rxd5 Bxd5 28.Bxd5+ Kg7 29.bxc3 [29.gxf5 doesn't help 29...Re1+ 30.Ka2 Bd4] 29...c6 [29...fxg4 secures the point 30.Rg2 h5 31.Bc4] 30.Bf3 Re3 31.Rh3 [31.Rf2 does not win a prize 31...fxg4 32.Bxg4 h5] 31...fxg4 32.Bxg4 Rxh3 33.Bxh3 Re3 34.Bc8 Rxc3 35.Kb2 Rc4 36.f5 g5 37.Bxb7 Rc5 [Better is 37...g4 nails it down 38.f6+ Kxf6 39.Ba6] 38.Kb3 [D]



0-1

**Round: 2 (As scheduled)**

Submitted by Doug with his, Eric's and selected Fritz comments [shown thusly].

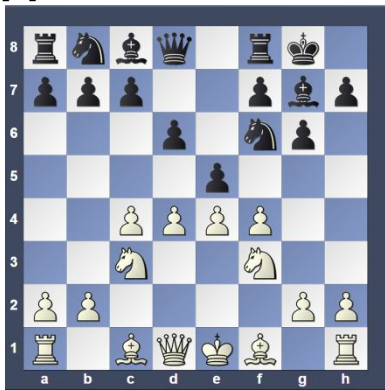
**White: Eric Funk (2043)**

**Black: Doug Kern (1966)**

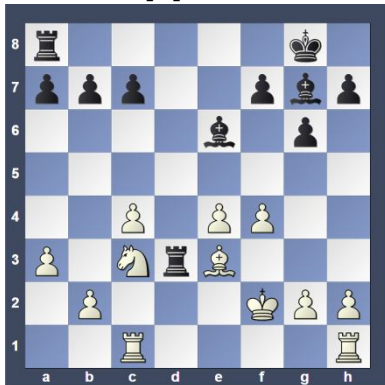
**Date: 1/16/2015 (Date as scheduled)**

[E76: King's Indian: Four Pawns Attack: Lines specific to 6 Nf3 move-order] (Text cont. p.5)

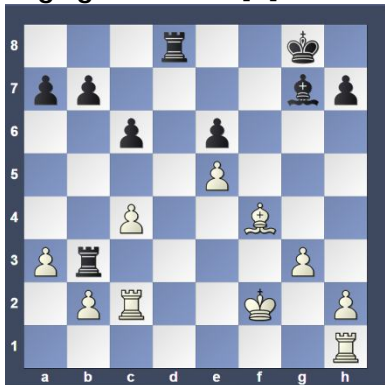
(Cont. from p.4) 1.c4 Nf6 2.Nc3 g6  
3.e4 d6 4.d4 Bg7 5.f4 0-0 6.Nf3 e5  
[D]



(Doug - Black is sacrificing a pawn to open up lines for his pieces. The opening wasn't necessarily a success for Black, but it made White think.) **7.dxe5 dxe5**  
**8.Qxd8 Rxd8 9.Nxe5 Na6** (Doug - Intending Nc5, which White shuts down)  
**10.Be3 Nb4 11.Rc1 Ng4 12.Nxg4 Bxg4 13.a3 Nd3+ 14.Bxd3 Rxd3 15.Kf2 Be6** [D]

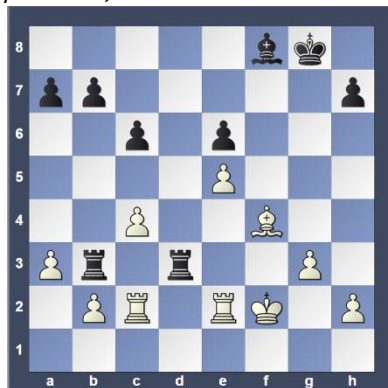


(Doug - Black has managed to place a rook deep in White's territory, and now just needs to try and exploit that.)  
**16.Nb5! c6 17.Nc7 Rad8 18.Nxe6 fxe6 19.Rc2 Rb3** (Doug - Targeting the b2 pawn.)  
**20.e5 g5** (Doug - The e5-pawn is much more valuable, so Black throws the g-pawn at the support pawn.)  
**21.g3 gxf4 22.Bxf4** [D]

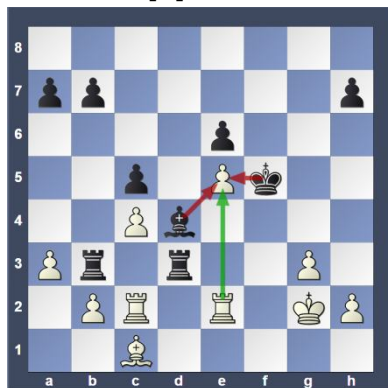


(Doug - Here I felt gxf4 was best for White, with potential pressure down the g-file.) **22...Rdd3 23.Re1 Bf8 24.Ree2** [D] (Next col.) (Text cont. next col.)

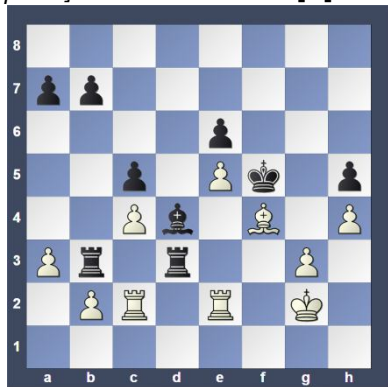
Position after 24.Ree2 (From prev.col.)



(Cont. from prev. col.) (Doug - Here I felt White had to play c5 to keep the bishop out. It may become hard to hold both e5 and c5, but once the Black bishop is supported on d4, Black is in much better shape.)  
**24...Bc5+ 25.Kg2 Bd4 26.Bc1 c5 27.Bh6 Rf3** (Doug - To prevent mate threats along the f-file.) **28.Bf4 Kf7 29.Rcd2 Kg6 30.Rc2 Rfd3 31.Bc1 Kf5** [D]

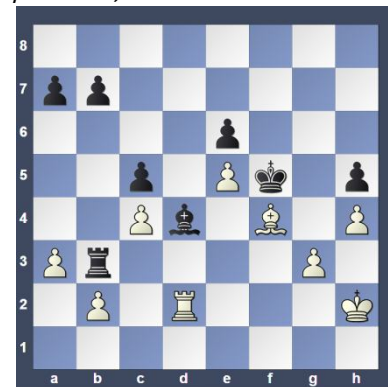


[Exerts pressure on the isolated pawn] **32.Bf4 h5 33.h4?** [D]

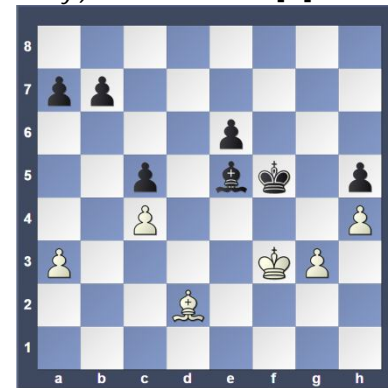


(Doug - This gives Black some mate threats and lets a pair of rooks get traded off.) (Better is 33.Kh3= would keep White alive) **33...Rd1+**  
**34.Kh2 Rf3 35.Rcd2?** (35.Kg2 Rfd3 36.Kh3) **35...Rxd2 36.Rxd2 Rb3** [D] (Next col.) (Doug - The rook blocks the bishop from covering b2, so Black wins back his pawn.) (Text cont. next col.)

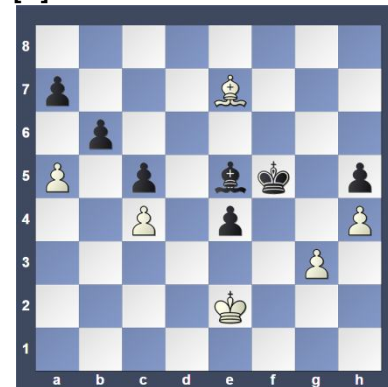
Position after 36...Rb3 (From prev.col.)



(Cont. from prev. col.) **37.Kg2** [37.Kh3 Rxb2 38.Rxb2 Bxb2]  
**37...Rxb2 38.Kf3 Rxd2** (Doug - Rb3+ followed by Rxa3 is much better, and should allow Black to win easily.) **39.Bxd2 Bxe5** [D]



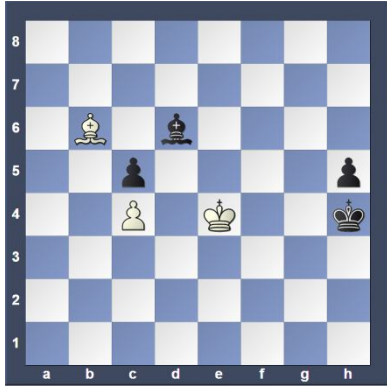
(Doug - Black still has a better game, up a pawn now, but his technique needs work. White earns the draw.)  
**40.Be3 Bd4 41.Bg5 e5 42.Be7 e4+ 43.Ke2 b6 44.a4 Be5 45.a5** [D]



**45...Bxg3** (Eric - 45... bxa5 wins easily for black. The text move allows white to steal a draw.) (Better is 45...bxa5 and Black can already relax 46.Bxc5 Bxg3 47.Be7) **46.axb6 axb6 47.Bd8 Be5 48.Bxb6 Bd4 49.Bc7 Be5 50.Bb6 Bd6 51.Ke3 Kg4?** (Eric - Giving up the e-pawn doesn't help black since all white needs to do now is (Text cont. p.6)

(Cont. from p.5) head to the h1-corner with his king.) (Better is 51...Be7 and Black takes home the point]

**52.Kxe4 Kxh4 [D]**



**53.Kf3** [53.Kd5!? is noteworthy 53...Bf8

54.Bxc5 Bxc5 55.Kxc5=] **53...Kg5**

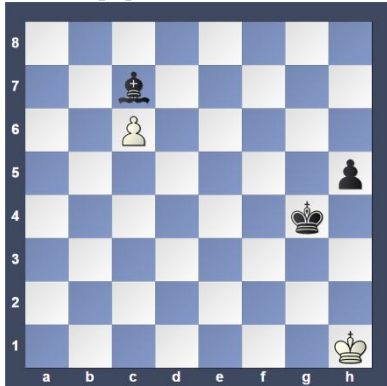
**54.Bxc5?** [Better is 54.Bd8+ would bring

relief 54...Kf5 55.Bh4] **54...Bxc5 55.Kg2**

**Kg4 56.Kh1 Bd6 57.c5 Bc7 58.Kg2**

**Bf4** [58...h4 and Black wins] **59.c6 Bc7**

**60.Kh1 [D]**



1/2-1/2



Jackie Brown playing Dr. Art Martella. Caleb Zhang playing Ira Siegel in background.



Michael O'Gara playing Greg Sulat.



Ira Siegel playing Caleb Zhang with Dr. Martella Playing Jackie Brown and general view of tournament hall.



Doug Kern playing Eric Funk with Bob Pisciotta playing his opponent hidden by Doug.

This concludes this issue. I have to keep the final size of the "pdf" file below 2MB or the file will not upload.

**Use the blank space for notes.**

**Other places to play chess:**

The below are for friendly off hand non-rated games (clocks optional). Bring chess set.

**Monday evenings** about 6:00 to 10:00 PM, "Starbucks", 10 North Main Street, Doylestown, PA

**Tuesday mornings** 9:30 AM to Noon at the Pennridge Community Senior Center in Silverdale, PA. Located on route 113 near route 152

**Wednesday evenings** 7:30 to 10:00 PM, "Christ Reformed Church at Indian Creek" located at 171 Church Road (intersection with Cowpath Road), Telford, PA. (**Note:** Temporarily closed until after Easter because of Wednesday evening Lenten services.)

**Daily, Monday thru Friday** 8 to 4, Encore Experiences, (Senior Center), 312 Alumni Avenue, Harleysville, PA

**Allentown Center City Chess Club**

**Offer** (from Eric C. Johnson): "For any of our events -- If three or more Lansdale players carpool together -- the designated driver plays for free!"

<http://www.freewebs.com/allentowncentercitychessclub>

[www.northpennchessclub.org](http://www.northpennchessclub.org)