

# ~ En Passant ~

## Newsletter of the North Penn Chess Club, Lansdale, PA – Summer 2016, Part 2

E. Olin Mastin, Editor

North Penn Chess Club  
500 West Main Street  
Lansdale, PA 19446

[www.northpennchessclub.org](http://www.northpennchessclub.org)

(215) 699-8418 [donfunk@msn.com](mailto:donfunk@msn.com)

This issue will feature games played in April and May at NPCC and elsewhere.

Once again I must reiterate the purpose of these newsletters is to include as many games as possible by NPCC players irregardless of the strength of the participants.

Thanks to all for submitting games!

### Games from the NPCC 2016

#### May Quads Tournament:

##### Round: 3

Submitted by Doug with his comments and selected Fritz comments [shown thusly].

White: Bob Kampia (1709)

Black: Doug Kern (1970)

Date: 5/27/2016

[B02: Alekhine's Defense: Chase Variation and lines with early Nc3] 1.e4 Nf6 2.e5 Nd5 3.Bc4 Nb6 4.Bb3 Nc6 5.Nf3 d6 6.exd6 cxd6 7.d4 [D]

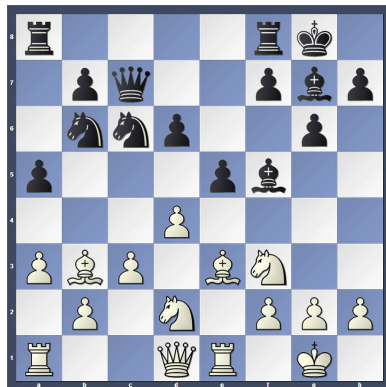


7...Bf5 8.O-O g6 9.Be3 [9.d5!? Na5 10.Qd4] 9...Bg7 10.Nbd2 O-O 11.Re1 a5 [D]



Text cont. next col.)

[11...Na5 12.c3] 12.a3 Qc7 [12...a4 13.Ba2 =] 13.c3 [13.d5 Ne5 14.Nxe5 Bxe5 15.Bxb6 Qxb6 =] 13...e5?! [D]



( Doug - trying to break in the center; I didn't get the message during the game that d5 and e6 was the better way to set up the central pawns.)

[13...a4 14.Ba2 d5 15.Qe2] 14.dxe5 Nxe5 15.Nxe5 dxe5 16.Qe2 Rad8 [16...a4 !? 17.Qb5 Ra6 =] 17.Qb5 [D]



[White threatens to win material: Qb5xb6. White forks: a5+b6] 17...Nc8 18.Rad1 Bd3 19.Qc5?! [19.Nc4 Bxc4 20.Qxc4 Qxc4 21.Bxc4 Bf6] 19...Qxc5 20.Bxc5 Rfe8 21.Ba4?? [D]



Text cont. next col.)

(Cont. from prev.col.) [Throwing away the advantage. gives the opponent new chances.] [21.f4 b6 22.Bf2 exf4 23.Bh4 Rxe1+ 24.Rxe1 +/-; Better is 21.f3 would hold out.] 21...b5 22.Bb3 a4 23.Ba2 Bc2 24.Be3 Bxd1 25.Rxd1 h6 (Doug - Taking away squares from the bishop. White's bishop pair is still very dangerous here; Black needs to eliminate one of them.) 26.Re1 Bf8 27.Ne4 Kg7 28.Kf1 f5 29.Nc5 f4 [D]

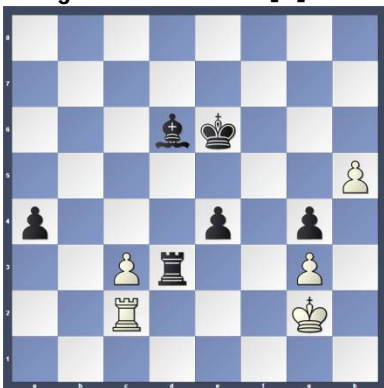


(Doug - This way Black eliminates the bishop pair and simplifies.) 30.Ne6+ Rxe6! [A brilliant end.] 31.Bxe6 fxe3 32.Rxe3 Kf6 33.Bh3 [33.Bxc8 Rxc8 34.Ke2] 33...Nb6 34.Ke1 Nc4 35.Re2 g5 36.g3 h5 37.Bg2 Rd6 38.h3 [38.Rc2 doesn't doesn't help much, 38...g4] 38...g4 39.h4 [39.hxg4 hoping against hope 39...hxg4 40.Be4] 39...Bh6 [D]



(Doug - Now the bishop enters and pawns can fall.) 40.f3 Bc1 41.fxg4 hxg4 42.Bf1 Nxb2 (Doug - 42...Bd2+ may be stronger.) [Better is 42...Bd2+ and Black takes home the point 43.Kf2 Nxb2 44.Kg2] 43.Rf2+ Ke6 44.Bxb5 (Text cont. p.2)

(Cont. from p.1) [44.Rc2 what else?  
44...Rd1+ 45.Ke2] 44...Nd3+ 45.Bxd3  
Rxd3 46.Rc2 Bxa3 47.Kf2 Bc5+  
48.Kg2 e4 49.h5 Bd6 [D]

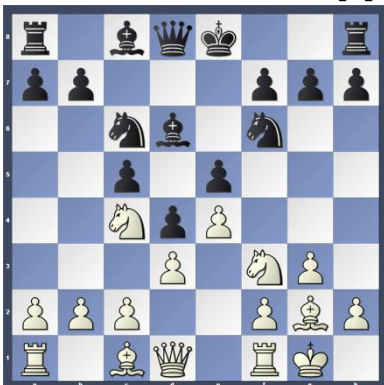


0-1  
**Round: 3**

Submitted by Olin with selected Fritz  
comments [shown thusly].

**White: Olin Mastin (1502)**  
**Black: Bob Pisciotta (1496)**  
**Date: 5/27/2016**

[A08: King's Indian Attack] 1.Nf3 d5  
2.g3 c5 3.Bg2 Nc6 4.0-0 e5 5.d3 Nf6  
6.Nbd2 Bd6 7.e4 d4 8.Nc4 [D]



8...Bc7 9.a4 a5 10.Bg5 0-0 11.h4 h6  
12.Bd2 Bg4 13.Qe1 Re8 14.Nh2 Be6  
15.b3 [D]



15...Na7 [15...Nb4 16.Qb1] 16.f4  
[16.Nxa5 Qe7=] 16...b5 [Better is  
16...exf4!? and Black could well hope to  
play on 17.gxf4 Nc6=] 17.axb5 exf4  
18.Bxf4 [Better is 18.gxf4!? Nxb5  
19.e5±] (Text cont. next col.)

(Cont. from prev. col.) 18...Nxb5  
19.Bxc7 Qxc7 20.e5 [D]



20...Nd5 21.Qe2 [21.Rxa5 Rxa5  
22.Qxa5 Qxa5 23.Nxa5 Ne3]  
21...Rad8 [21...Ra7 22.Rfe1]  
22.Qh5 Ra8 [Better is 22...Ne3!?  
23.Nxe3 dxe3] 23.Rae1 Ne7 [Better  
is 23...Ra6= and Black is still in the  
game.] 24.Bxa8 Nf5?? [The position  
is going down the drain.] [Better is  
24...Rxa8 25.Ng4 Nd5±] 25.Rxf5 g6  
[25...Bxf5 is still a small chance  
26.Qxf5 Rxa8] 26.Qxh6! [D]



[Mate threat] 26...Bxf5 [With the  
idea 26...-- 27.Ng4 Mate threat.]  
27.Be4 Bh3 28.Bg2 Be6 29.Nf3  
Bf5 30.h5 Qe7 31.Nd6 [Better is  
31.Ng5 [D]]



(Analysis Diagram)  
and White wins 31...Qxg5 32.Qxg5]  
31...Nxd6 [31...Qf8 does not save  
the day 32.Qxf8+ Rxf8 33.Nxb5 gxh5  
34.Nd6] 32.exd6 Qf8 [D] (Next  
col.) 33.Qxf8+ Rxf8 34.Re7 Rd8  
35.Ng5 gxh5 36.Rxf7 Bg6 37.Ra7  
[D] (Next col.) (Text cont. next  
col.)

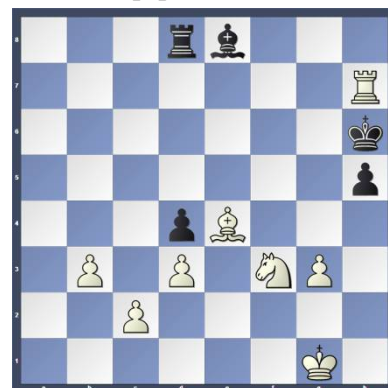
Position after 32...Qf8 (From  
prev. col.)



Position after 37.Ra7 (From  
prev. col.)



(Cont. from prev. col.) [37.Bd5  
Rxd6 38.Rd7+ Rxd5 39.Rxd5 c4  
40.bxc4 Kg7] 37...Rxd6 38.Ra8+  
Kg7 39.Rxa5 Kh6 40.Rxc5 Rd8  
41.Be4 [41.b4 seems even better  
41...Be8 42.b5 Rb8] 41...Be8  
42.Nf3 Bf7 43.Rc7 Be8? [43...Bg6  
0 44.Rc65; 43...Rf8 0 44.b46]  
44.Rh7#! [D]



1-0  
**Game from the Allentown  
Random Pairing Swiss  
Tournament:**

**Round: 3**  
Submitted by Joe with his comments  
and selected Fritz comments [shown  
thusly].

**White: Greg Sulat (1558)**  
**Black: Joe Mucerino (2102)**  
**Date: 7/2/2016**

(Text cont. p.3)

(Cont. from p.2) [C00: French: Unusual White 2nd moves] **1.e4 d5 2.exd5 Nf6 3.c4 e6 4.Nc3 [D]**



(Joe - 4.dxe6 Bxe6 gets the position into the very sharp and combative Icelandic Gambit.) [4.dxe6 Bxe6 5.Be2 c5 6.Nf3 Nc6 7.0-0 Be7 etc... Psakhis,L (2590)-Nadanian,A (2325) Yerevan 1996 1-0] **4...exd5 5.cxd5** (Joe - 5.d4 c6 transposes into a Caro Kann Defense.) **5...Nxd5 6.Nf3 c6?!** (Joe - Better is simply 6...Nc6.) [6...Be7 7.Bc4 (7.d4 0-0 8.Bd3 Nc6 9.h3 Be6 etc...Scavo,F (2257)-Dekic,J (2295) Budapest 2000 ½-½) 7...Nb6 8.Bb3 0-0 9.h3 (9.d4 Bg4 10.Be3 Nc6 etc... ½-½ (14) Szell,L (2245)-Dobos,J (2380) Hungary 1997) 9...Bf5 10.d4 Nc6 11.0-0 Bf6 etc... Eche,S (2203)-Bergez,L (2398) Paris 2006 0-1] **7.Bc4 Qe7+** (Joe - I was willing to go into an ending where white had an isolated pawn.) **8.Be2 Nf4 9.0-0 Nxe2+ 10.Qxe2?! [D]**



(Joe - Now white agrees to go into the ending with the isolated pawn, but he's also given up the bishop pair as well.) **10...Qxe2 11.Nxe2** [Black has the pair of bishops.] **11...Bd6?!** (Joe - Apparently not very accurate. Stockfish 7 preferred 11...Nd7 by about a quarter of a pawn over everything else. I played the text so I could castle quickly.) **12.Ng3 0-0 13.b3 Na6 14.a3? [D]** (Next col.) (Joe - White panics and wastes time. A future ...Nb4 was not the end of the world.) **14...Be6?! (Text cont. next col.)**

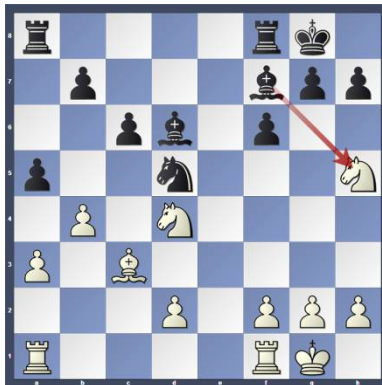
**Position after 14.a3? (From prev. col.)**



(Cont. from prev. col.) (Joe - Again, not the most accurate. 14...Nc5 is better, with the knight heading to d3 or even b3.) **15.b4 Nc7 16.Bb2 a5 17.Nh5? [D]**

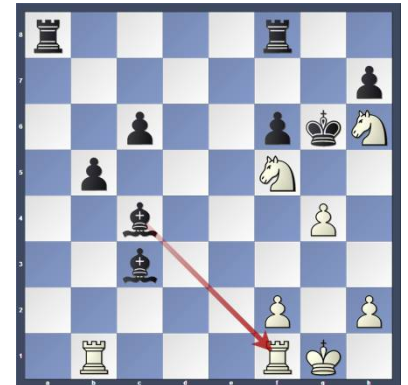


(Joe - The threat to g7 is easily dealt with - for now.) [Better is 17.Ne4!? might be a viable alternative 17...Be7 18.Be5] **17...f6 18.Bc3 Nd5** (Joe - The computer likes 18...axb5.) **19.Nd4 Bf7?? [D]**



(Joe - Missing a simple tactic. Now black's advantage evaporates.) [Better is 19...Bc8] **20.Nxg7 axb4** (Joe - Of course after 20...Kxg7 21.Nf5+ wins the bishop on d6.) **21.axb4 Bxb4 22.Ngf5?** (Joe - This gives up a pawn for no reason. White should exchange on b4 first.) [Better is 22.Bxb4 and White hangs on 22...Nxb4 23.Rab1=] (Text cont. next col.)

(Cont. from prev. col.) **22...Nxc3 23.Nh6+ Kg7 24.Ndf5+ Kg6 25.dxc3 Bxc3 26.Rab1?! (Joe - Of course white wants to attack black's passed pawns, but that is easily dealt with. 26.Rad1 is a bit more threatening.) 26...b5 27.g4 Bc4?? [D]**



[Gives the opponent new chances.] (Joe - This throws away the game. I completely overlooked white's next move. 27...Be6, trading off one of the knights, should win.) [Better is 27...Be6 would have made live much easier for Black 28.Rbd1 Rfe8] **28.h4!** [White has a mate threat.] (Joe - Threatening 29.h5+ Kg5 30.f4 mate.) **28...Bd2??** (Joe - Panicking. After 28...Bd4 ((note that 29.Nxd4 does not win a piece because of 29...Kxh6)) the position is still even. I superficially thought that white would simply move his king to break the pin on the f pawn. But after 29.Kg2 or 29.Kh2 black pins again with 29...Ra2. And if white moves his king forward again, then black plays 30...Ra3+, and white cannot make progress.) [28...Bd4! 29.Rbd1 Rfd8 30.Rxd4 Rxd4=] **29.f4!** [Mate threat] **29...Bxf4 [D]**



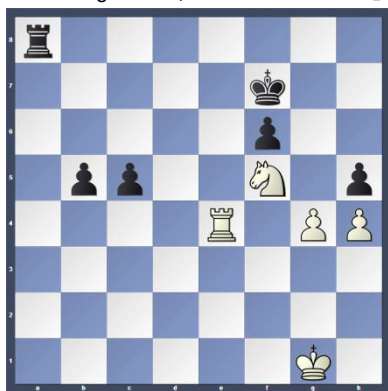
(Joe - 29...Be3+ is no help.) [...29...-- 30.h5# Mate threat] **30.Rxf4 Bd3 31.Re1 c5??** (Joe - Played too quickly. Again, I overlooked a simple move. (Text cont. p.4)

(Cont. from p.3) Black should play 31...Rfe8.) [Better is 31...Rfe8!? 32.Rxe8 Rxe8] **32.Re7** (Joe - White is winning.) **32...Bxf5 33.Nxf5 Rf7 34.Rfe4 [D]**



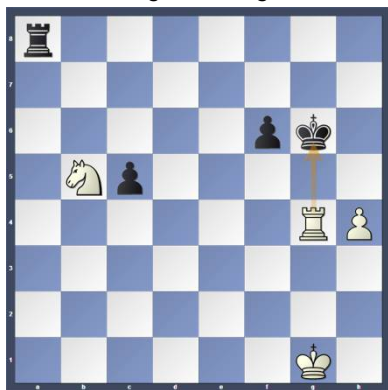
(Joe - A bit stronger is to play 34.Rxf7 right away followed by 35.Nd6+.)

**34...h5** (Joe - Now black has some breathing room.) **35.Rxf7 Kxf7 [D]**



**36.Nd6+??** [White loses the upper hand]

(Joe - This throws away a half point. 36.Re7+, forcing the black king to the back rank, should win. 36.gxh5 is the second best move.) [36.Re7+ Kf8 37.gxh5 Ra1+ 38.Kg2 Ra2+ 39.Kf3 Ra3+ 40.Kf2 Ra2+ 41.Ke3 Ra3+ 42.Kf4 Ra4+ 43.Kg3 Ra3+ 44.Re3 Rxe3+ 45.Nxe3] **36...Kg6 37.Nxb5 hxg4 38.Rxg4+ [D]**



(Joe - The computer still gives white a slight advantage, but this should be a draw.) ½-½

### Game from the NPCC 2016 June G45 Tournament:

(Text cont. next col.)

(Cont. from prev. col.)

### Round: 2

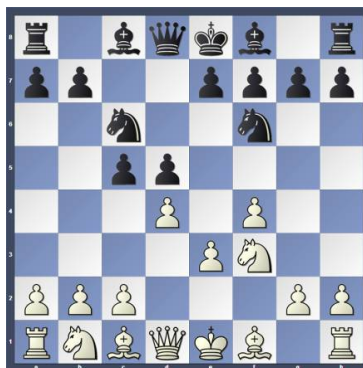
Submitted by Don with his comments and selected Fritz comments [shown thusly].

**White: Don Funk (1600)**

**Black: Scott Zrinski (1832)**

**Date: 6/18/2016**

[A03: Bird's Opening with 1...d5] **1.f4 d5 2.e3 Nf6 3.Nf3 c5 4.d4 Nc6 [D]**



**5.c3 cxd4** [5...Bf5 6.Bd3 Bxd3 7.Qxd3 e6 8.0-0 Be7 etc...Jorge,D (2226)-Cordeiro,M (2238) Itajai 2014 1-0 (38)] **6.exd4 Bf5 7.Bd3** [7.Be2 e6 8.0-0 Ne4 (8...Bd6 9.Ne5 h6 10.Nd2 Qc7 etc...Kritz,L (2424)-Vallejo Pons,F (2554) Oropesa del Mar 2000 ½-½ (42) (9.Nbd2 Bd6 10.Nxe4 Bxe4 11.Bd3 Bxd3 etc...Markovic,G (2275)-Gurieli,N (2365) Biel 1991 ½-½ (56)] **7...Ne4 [D]**



**8.0-0 e6 9.Qc2 Be7 10.Nbd2 Nd6 11.Ne5 Rc8 12.Nxc6 Rxc6 13.Bxf5 Nxf5 14.Nf3 Qb6 15.Ne5?? [D]**



(Text cont. next col.)

(Cont. from prev. col.) (Don - Had to move Queen.) **15...Nxd4!**

[Deflection: c3] **16.Qf2** [16.cxd4 Rxc2 Deflection Pinning (16...Qxd4+ Decoy)] **16...Bc5 17.Kh1 [D]**



(Don -If 17...Nb3 18.Qg3) [17.Be3 Nf5 18.Bxc5 Rxc5] **17...Nf5 [D]**



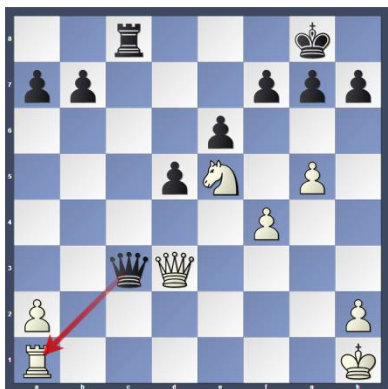
[Begins the maneuver Nd4-f5-d6-e4] [Better is 17...Nb3!? 18.Qg3 Nxa1] **18.Qf3 Rc7 19.g4 Nd6?? [D]**



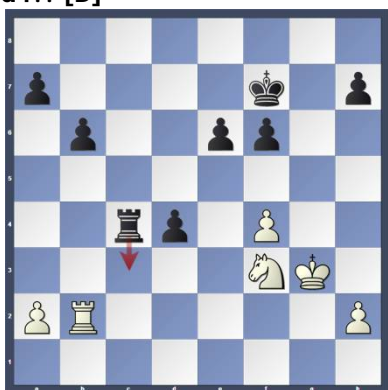
[Forfeits the advantage.] [(Don - Maybe 19...Nh6 better.) [Better is 19...Nh4 20.Qh3 Qa6] **20.b4 Ne4** [A classical outpost] **21.bxc5 Qxc5 22.Be3 Qa5 23.Bd4 Nd2 24.Qd1 Nxf1 25.Qxf1 0-0 26.Qd3 Rfc8 27.g5** [White wins space.] **27...Rxc3 28.Bxc3 Qxc3 [D]**

(p.5) **29.Qxc3** [White has a mate threat.] **29...Rxc3** [White wins a piece.] **30.Kg2 f5** [30...f6 31.gxf6 gxf6 32.Nf3=] (Text cont. p.5)

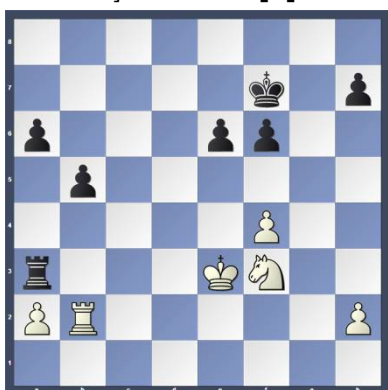
Position after 28...Qxc3 (From p.4.)



(Cont. from p.4) **31.gxf6** [Better is 31.Rb1!? Rc7 32.Kf3±] **31...gxf6 32.Nf3 Kf7 33.Rb1 b6 34.Rb2 Rc4 35.Kg3 d4??** [D]



[Allows the opponent back into the game.] [Better is 35...Ke7 would keep Black in the game.] **36.Rd2 Rc3 37.Rxd4 Ra3 38.Rd2 a6 39.Rb2 b5 40.Kf2 Ra5 41.Ke3** [Better is 41.Nd4!±] **41...Ra3+** [D]



(Don - Repeated three times - Draw.)  
[Don - Note: Both players were very short on time.]  
½-½

### Game from the NPCC 2016 April Swiss Open Tournament:

**Round: 2**

Submitted by Robert with selected Fritz comments [shown thusly].

**White: George Murphy (1455)**

**Black: Robert Hepp (1123)**

**Date: 4/8/2016**

(Text cont. next col.)

(Cont. from prev. col.) [D53: Queen's Gambit Declined: 4 Bg5 Be7: Early deviations] **1.Nf3 d5 2.d4 Nf6 3.c4 c6 4.Nc3 e6 5.Bg5 Be7 6.e3 h6 7.Bh4 Nbd7 8.Bd3 Qc7** [D]



[8...Nb6 9.cxd5 exd5 10.h3 Ne4 11.Bxe7 Qxe7 ..... Pillsbury,H-Bird,H London 1899 ½-½ (65); 8...b6 9.cxd5 Nxd5 10.Nxd5 exd5 11.Bxe7 Qxe7 ..... Vallejo Pons,F (2693)-Lenic,L (2637) Plovdiv 2012 ½-½ (50)] **9.Qc2 Bb4 10.0-0 a6** [10...dxc4 11.Bxc4 Bd6 12.Rad1] **11.a3 Be7 12.b4 b5** [12...dxc4 13.Bxc4 0-0 14.Bd3] **13.cxd5 cxd5 14.Rac1 Qd8 15.Rfe1** [D]

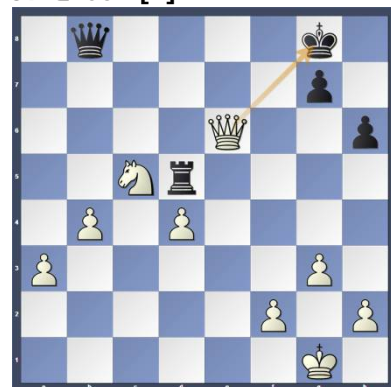


[Better is 15.Ne5 Bb7 16.a4±] **15...Nh5?** [Better is 15...0-0= This is the best way to fight back.] **16.Bxe7 Qxe7** [16...Kxe7 17.e4 Kf8 18.exd5 Ndf6] **17.g3?** [Spoils everything.] [Better is 17.Nxb5 and the result of the game is clear: White will win 17...axb5 18.Qc6] **17...Bb7 18.e4 Nb6?** [Better is 18...0-0!? deserves consideration.] **19.exd5 0-0** [Better is 19...Nxd5 20.Nxd5 Bxd5] **20.Ne4?** [Releasing the pressure on the opponent.] [Better is 20.Bh7+!? Kh8 21.Ne5] **20...Rac8 21.Nc5 Bxd5 22.Qe2 Bxf3?** [Better is 22...Nf6!±= would keep Black in the game.] **23.Qxf3 Nf6 24.Nxa6 Rxc1 25.Rxc1 Qa7?** [Better is 25...Qd7!±] **26.Bxb5 Nbd5 27.Qd3** [D] (Next col.) (Text cont. next col.)

Position after 27.Qd3 (From prev. col.)



**27... Ne7?** [Terrible, but the game is lost in any case.][27...Rd8] **28.Rc7 Qa8 29.Rxe7 Nd5 30.Rd7 Rc8** [30...Nf6 doesn't do any good 31.Rc7 Qd8 32.Bc6] **31.Nc5 Nb6 32.Rd6 Nd5 33.Ra6 Qb8 34.Rc6** [34.Bc6 makes it even easier for White 34...Ne7 35.b5 Qc7] **34...Nc7 35.Bc4 Rd8 36.Qe4** [Better is 36.b5 and White can already relax 36...Nxb5 37.Bxb5 Kh8] **36...Nd5 37.Bxd5** [37.Rxe6 seems even better 37...Nc3 38.Qf5 Qc7] **37...Rxd5 38.Rxe6 fxe6 39.Qxe6+** [D]



[39.Qxe6+ Kh8 40.Qxd5] **1-0**  
**Game from the NPCC 2016 April Swiss Open Tournament:**  
**Round: 4**

Submitted by Olin with my comments and selected Fritz comments [shown thusly].

**White: Olin Mastin (1500)**

**Black: Don Forest, (1387)**

**Date: 4/22/2016**

[A07: Réti Opening: New York and Capablanca Systems] **1.Nf3 d5 2.g3 Nf6 3.Bg2 Bf5 4.0-0 e6 5.d3 h6 6.Nbd2 Be7 7.Re1** [7.c4 Nc6 8.b3 0-0 9.Bb2 a5 10.Rc1 Re8 etc... Socko,B (2528)-Harikrishna,P (2500) Istanbul 2000 ½-½ (35)] (Text cont. p.6)

(Cont. from p. 5) **7...0-0 8.Nf1** [8.e3 c5 9.Qe2 Nc6 10.e4 Bh7 11.e5 Nd7 etc... Smirnov,V (2390)-Sideif Sade,F (2200) Moscow 1972 0-1 (60); 8.b3 c5 (8...a5 9.a3 c5 10.c4 Nc6 11.cxd5 exd5 etc... Hlavnicka,J (2235)-Babula,M (2330) Czechia 2000 1-0 (62)] **9.Bb2 Nc6 10.e4 Bh7 11.exd5 Nxd5 12.Ne5 Nxe5 etc... Choukri,A (2231)-Van Wely,L (2653) Rabat 2015 1-0 (51)] **8...c6 9.Bf4 Bd6** [D]**



[9...Nbd7 10.c3=] **10.Bxd6** [10.e4!? Bxf4 11.exf5±] **10...Qxd6 11.c4 a5 12.Rc1 Nbd7 13.Qd2 a4 14.a3 Nc5** [14...Bh7 15.cxd5 exd5 16.Ne3=] **15.Qb4** [15.Nd4 Bg6 16.Qb4=] **15...Rfd8** [15...d4 16.h3] **16.d4??** [Hands over the advantage to the opponent.] [Better is 16.cxd5 Nb3 17.dxc6 Nxc1 18.Rxc1 bxc6 19.Qxd6 Rxd6 20.Ne5±] **16...Nb3** [D]



**17.c5 Qc7 18.Rc3 Ra5 19.N1d2** [19.Ne3 Be4] **19...Rda8 20.Qb6** [D]



(Text cont. next col.)

(Cont. from prev. col.) (Olin - If say 20...Qb8 or d6, 21.Nxb3 Rb5! still traps the White Queen. i.e. 22.Qxb5 cxb5 23.Nbd2. Then Black has the Queen for a Rook and Knight.) [Better is 20.Rxb3!? axb3 21.Ne5]

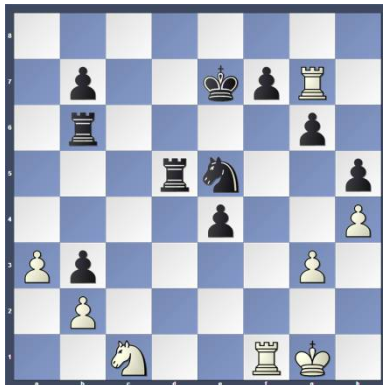
**20...Qxb6 21.cxb6 Rb5** [Better is 21...Nxd2!? 22.Nxd2 R5a6] **22.Nxb3 axb3 23.Ne5** [23.Nd2 Bc2 24.e3 Rxb6] **23...Rxb6 24.f3 Ra4 25.e3** [D]



**25...Bc2** [Menacing][25...Bh7 26.Ra1] **26.h4** [26.Bf1 Kf8] **26...h5** [26...Bh7 27.Ra1] **27.Bf1 Kf8 28.Bd3 Bxd3 29.Nxd3 Nd7** [D]

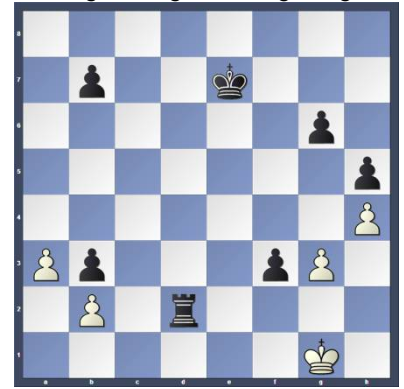


**30.Nc1 Ra5 31.e4 dxe4 32.fxe4 e5 33.d5 cxd5 34.Rc7 Ke8 35.Rc8+ Ke7 36.exd5 Rxd5 37.Rg8** [37.Rc3 Nc5] **37...g6** [37...Rd2 seems even better 38.Ne2 Rxb2 39.Nc3] **38.Rf1 e4** [Better is 38...Rd2 might be the shorter path 39.Rf2 Rc2 40.Rxc2 bxc2] **39.Rg7 Ne5** [D]



(Text cont. next col.)

(Cont. from prev. col.) **40.Ne2 Rd2 41.Nf4 Nf3+ 42.Rxf3 exf3 43.Nxg6+ Rxg6 44.Rxg6 fxg6** [D]



[44...fxg6 45.Kf1 Rxb2 46.Kg1 Rc2 47.Kh1 b2 48.Kg1 b1Q#] **0-1**

This concludes this issue. More games in next issue.

Use blank space for notes.

### Other places to play chess:

for friendly off hand non-rated games (clocks optional). Bring chess set.

**Monday evenings** about 6:00 to 10:00 PM, "Starbucks", 10 North Main Street, Doylestown

**Tuesday mornings** 9:30 AM to Noon at the Pennridge Community Senior Center in Silverdale. Located on route 113 near route 152

**Wednesday evenings** 7:30 to 10:00 PM, "Christ Reformed Church at Indian Creek" located at 171 Church Road (intersection with Cowpath Road), Telford, PA. (Suspended for Summer. Will reopen in Fall)

**Allentown Center City Chess Club Offer** (from Eric C. Johnson): "For any of our events -- If three or more Lansdale players carpool together -- the designated driver plays for free!"

<http://www.freewebs.com/allentowncentercitychessclub>