

# ~ En Passant ~

Newsletter of the North Penn Chess Club of Lansdale, PA – Summer 2015, Part 6

E. Olin Mastin, Editor

North Penn Chess Club  
500 West Main Street  
Lansdale, PA 19446

[www.northpennchessclub.org](http://www.northpennchessclub.org)  
(215) 699-8418 [donfunk@msn.com](mailto:donfunk@msn.com)

This issue will feature games played in the July Swiss and the 46<sup>th</sup> Susquehanna Valley Open (SVO).

The purpose behind these newsletters is to include as many games as possible played among NPCC members irregardless of the strength of the players. We want to include everyone's games, not only the most challenging. Of course, some will be more instructive than others; however, they all will be permanently recorded for your review. Thanks to all for submitting games!

## Games from the NPCC 2015

### July Swiss Tournament:

#### Round: 4

Submitted by Olin with selected Fritz comments [shown thusly].

White: Knox Bickford (1265)

Black: Olin Mastin (1539)

Date: 7/24/2015

[D91: Grünfeld: 4 Nf3 Bg7 5 Bg5] 1.d4 Nf6  
2.Nf3 g6 3.Bg5 Bg7 4.e3 0-0 5.c4 d5  
6.Nc3 c6 [D]



7.cxd5 cxd5 8.Be2 Nc6 9.0-0 h6  
10.Bf4 a6 11.h3 Re8 12.Ne5 e6  
13.Qc2 Nxe5 [D] (Next col.) 14.dxe5?  
[Better is 14.Bxe5!? is interesting 14...Bd7  
15.Rac1=] 14...Nd7 15.Bd3 [15.Rac1!?]  
15...Nxe5 16.Bxe5 Bxe5 17.Rfd1 Bd7  
18.Bxg6? [Better is 18.Qb3] 18...fxg6  
19.Qxg6+ Bg7 [D] (Next col.) 20.Rd4  
Qf6 21.Qg3 Kh7 (Text cont. next col.)

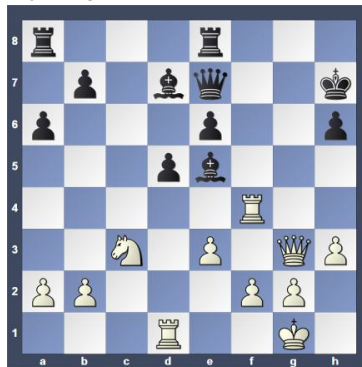
Position after 13...Nxe5 (From  
prev. col.)



Position after 19...Bg7 (From  
prev. col.)



(Cont. from prev. col.) 22.Rf4 Qe7  
23.Rd1 [23.Qf3 does not improve  
anything 23...Rf8] 23...Be5 [D]



24.Rf7+ Qxf7 25.Qxe5 Rf8 [D]



[25...Rf8 26.f4 Qg7] 0-1

#### Round: 4

Submitted by Jorge with selected  
Fritz comments [shown thusly].

White: Lunenfeld, Rich (2097)

Black: Garcia, Jorge (1885)

Date: 7/31/2015

[C62: Ruy Lopez: Steinitz Defense]

1.e4 e5 2.Nf3 Nc6 3.Bb5 d6  
4.d4 exd4 5.Nxd4 Bd7 6.c4  
Nxd4 [D]

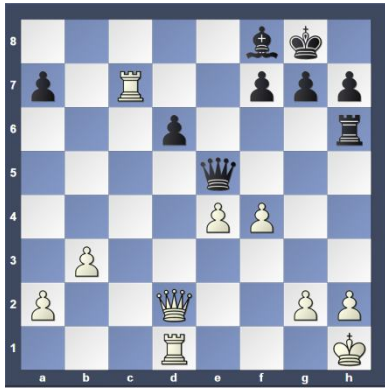


7.Bxd7+ Qxd7 8.Qxd4 Nf6 9.Nc3  
Be7 10.0-0 0-0 11.b3 Rfe8  
12.Bb2 Bf8 13.f3 b6 14.Kh1 Re7  
15.Nd1 b5 16.Ne3 bxc4 17.Qxc4  
[Black has new hanging pawns:  
c7+d6. Black's piece can't move: f8]  
17...Qe6? [Better is 17...d5 and  
Black could well hope to play on  
18.Qc2 c6] 18.Bxf6 Qxf6 [18...gxf6  
19.Nd5 Rd7] 19.Nd5 [D]

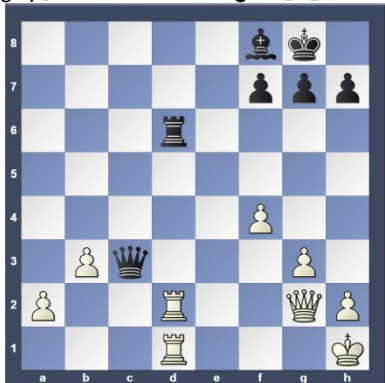


19...Qe5 20.Nxe7+ Qxe7 21.Qc6  
Re8 [21...Rd8 22.Rac1 d5 23.exd5]  
22.Rac1 Qe5 23.Rfd1 [23.Qxc7  
seems even better 23...Re7 24.Qb8  
f5] 23...Re6 [23...Re7 24.Qa6]  
24.Qd5 [24.Qxc7 might be the  
shorter path 24...Rg6] 24...Qb2  
[24...c5 does not improve anything  
25.Qxe5 Rxe5 26.Rc4] 25.Qd2  
(Text cont. p.2)

(Cont. from p. 1) [25.Rxc7!? and White can already relax 25...h5 26.Qa8 f5 27.exf5 Rf6 28.Qd5+ Kh7 29.Rxa7 Qc2] **25...Qe5** [25...Qxd2 26.Rxd2 c5] **26.Rxc7 Rh6** [26...Re7 cannot undo what has already been done 27.Rxe7 Qxe7 28.Qa5] **27.f4 [D]**



[Better is 27.h3 makes it even easier for White 27...a6] **27...Qxe4 28.Rxa7 Qf5** [28...Re6 does not win a prize 29.a4] **29.Ra5 Qc8 30.Rc1 Qb7** [30...Qb8 cannot change destiny 31.Re1] **31.Qd5 Qb4 32.g3 Qb6** [32...Rh5 is not much help 33.Qxh5 Qe4+ 34.Kg1 Qe3+ 35.Kg2 Qd2+ 36.Kh3 Qxc1 37.Qf3] **33.Rd1** [Better is 33.Ra8 it becomes clear that White will call all the shots 33...Qe3 34.Rxf8+ Kxf8 35.Qa8+ Qe8 36.Rc8] **33...Qe3 34.Qg2 Re6 35.Rad5 Qc3 36.R5d2 d5** [36...Re8 doesn't change anything anymore 37.Re2 Rc8 38.Qd5] **37.Qxd5** [Better is 37.Qf2 keeps an even firmer grip] **37...Rd6 38.Qg2? [D]**

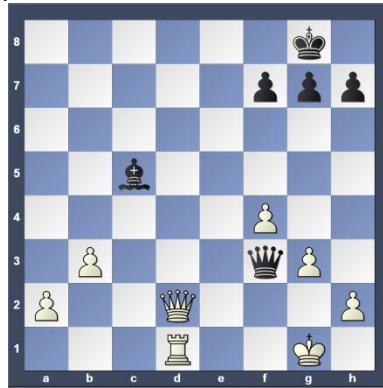


[Forfeits the clear win] [Better is 38.Qe5 White had this great chance 38...Qf3+ 39.Kg1 Qxd1+ 40.Rxd1 Rxd1+ 41.Kf2 Rd2+ 42.Kf3 Rxa2 43.Qb8] **38...Rxd2 39.Qxd2 Qf3+ 40.Kg1** [40.Qg2 desperation 40...Qxd1+ 41.Qg1] **40...Bc5+ [D]** (Next col.) [40...Bc5+ 41.Qd4 Qxd1+ 42.Kg2 Bxd4 43.f5 Qe2+ 44.Kh3 h5 45.a4 Bg1 46.Kh4 Qg4#] **0-1**

#### Round: 4

Submitted by Olin with my comments and selected Fritz comments [shown thusly]. (Text cont. next col.)

**Position after 40...Bc5+ (From prev. col.)**



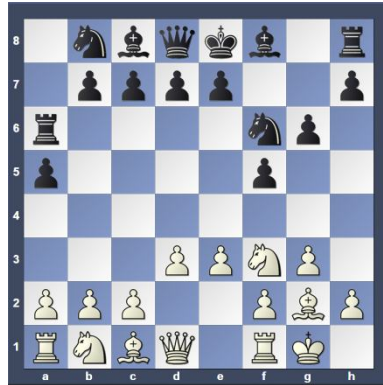
(Cont. from prev. col.)

**White: Olin Mastin (1539)**

**Black: Dr. Art Martella (1245)**

**Date: 7/31/2015**

[A04: Unusual lines after 1 Nf3 and King's Indian Attack] **1.Nf3 g6 2.g3 f5 3.e3 a5 4.Bg2 Ra6 5.0-0 Nf6 6.d3 [D]**



**6...Ng4 7.h3 Nh6 8.Nc3 d5?** [8...Bg7 9.e4 fxe4 10.Nxe4] **9.b3** [Better is 9.e4!?±] **9...c6 10.Bb2 e5?** [Better is 10...Bg7!? and Black can hope to survive] **11.Nxe5 Bd6** [11...Bg7 12.Na4 0-0 13.c4] **12.Ne2 0-0 13.e4 Qe7 14.Nf3 c5?** [Better is 14...fxe4!? 15.dxe4 dxe4±] **15.e5 [D]**

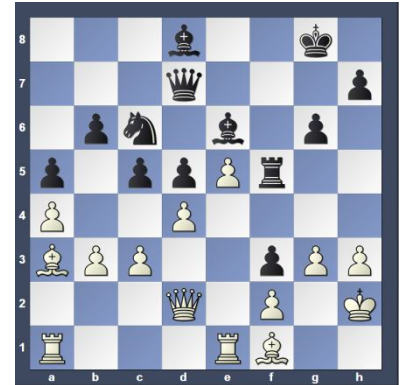


[15.exd5!? keeps an even firmer grip 15...a4] **15...Bc7 16.d4 Re6** [16...Rd8 17.Ba3 b6 18.Nf4] **17.a4** [17.Nf4 might be the shorter path 17...Rd8] **17...Nc6 18.Ba3 b6 19.Qd2 Nf7 20.Nf4 [D]** (Next col.)

**Position after 20.Nf4 (From prev. col.)**



**20...Nb4 21.Nxe6 Bxe6 22.c3 Nc6 23.Rfe1** [23.dxc5 makes it even easier for White 23...bxc5 24.Nd4 Nxd4 25.cxd4 Qg5 26.Qxg5 Nxg5 27.Bxc5 Rb8] **23...Qd7 24.Ng5** [Better is 24.dxc5 seems even better 24...Rb8] **24...Nxg5 25.Qxg5 Bd8 26.Qd2 f4** [26...Be7 doesn't change the outcome of the game 27.f4] **27.Kh2** [Better is 27.dxc5!? and White can already relax 27...bxc5 28.Bxc5 Be7 29.Bxe7 Nxe7] **27...f3 28.Bf1 Rf5 [D]**



**29.g4** [29.dxc5!? might be the shorter path 29...bxc5 30.Bxc5 Nxe5] **29...Rg5 30.Qf4 Bxg4?** [A blunder in a bad position] [30...h5 31.gxh5 Rxh5 32.Qxf3 cxd4 33.cxd4 Nxd4±] **31.e6** [Better is 31.hxg4 ends the debate 31...Qxg4 32.Qxg4 Rxg4 33.dxc5] **31...Bxe6 32.Rxe6 [D]**



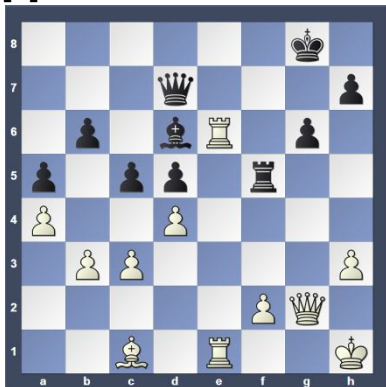
(Text cont. p.3)

(Cont. from p. 2) [32.dxc5?? that pawn is deadly bait and will cause White grave problems 32...Bc7 33.Bc1 Bxh3 34.Re8+ Kg7; 32.Qxf3?? taking the pawn will bring White grief 32...Bc7+ 33.Re5 Rf5]

**32...Rh5??** [An unfortunate move that relinquishes the win] (Olin – Incredibly, neither one of saw this during the game!) [Better is 32...Bc7 a shame that Black overlooked this excellent chance 33.Qxc7 Qxc7+ 34.Kh1 cxd4 35.cxd4 Kf7 (35...Nxd4?! 36.Re8+ Kf7 37.Rc1)]

**33.Rae1** [White has a mate threat] [Better is 33.Qg4 keeps an even firmer grip 33...Bf6 34.Rae1] **33...Ne7??** [Better is 33...Bc7\* saving the game 34.R6e5 Decoy: e5 34...Nxe5 35.dxe5 Rf5] (\*Olin – We both missed this move for the second time!) **34.Qxf3** (Olin – I finally realized that I better remove the possibility of getting my queen trapped, after almost missing it again! I don't think I could have depended on my opponent not seeing it forever.) [Better is 34.dxc5 and White has it in the bag 34...bxc5 35.Kg1 Rf5]

**34...Rf5 35.Qg2 Bc7+** [35...Qc7+ 36.Kh1 Kg7 37.dxc5 bxc5 38.Qg3 Qxg3 39.fxg3] **36.Kh1 Bd6 37.Bd3 Rf8** [37...Rh5 does not solve anything 38.Qg4 Kh8 39.c4] **38.Bc1 Nf5** [38...c4 is still a small chance 39.bxc4 Rf7] **39.Bxf5 Rxf5 [D]**



**40.Bh6** [Better is 40.Rxg6+ and the rest is a matter of technique 40...hxg6 41.Qxg6+ Kh8 42.Qh6+ Kg8 43.Rg1+ Kf7 44.Rg7+ Ke8 45.Rxd7 Kxd7 46.Qh7+ Ke6 47.Qg6+ Rf6 48.Qe8+ Be7 49.Bg5] **40...Kf7 41.Bg5 Kg8** [41...cxd4 is the last straw 42.cxd4 Bb4] **42.Be7 Bxe7 43.Rxe7 Qc6 44.R1e6 Qc8 45.Re8+** [D] (Next col.) (Olin – Therein ends a game I should have lost at least three times! Dr. Martella came to the club about two years ago and had never before played tournament. I would say he is coming along pretty good.)

(Text cont. next col.)

**Position after 45.Re8+** (From prev.col.)



1-0

## Games from the 46th Susquehanna Valley Open (SVO):

### Round: 1

Submitted by Joe with his and selected Fritz comments [shown thusly].

**White: Olin Mastin (1539)**

**Black: Joe Mucerino, (2112)**

**Date: 7/18/2015**

[A08: King's Indian Attack] **1.Nf3 d5 2.g3 c5 3.Bg2 Nc6 4.0-0 e5 5.d3 f5?!** (Joe - This move is dubious, and I was well aware of that. Black neglects development to get a big pawn center. But if black's center collapses, then he has no center and is way behind in development. With all due respect to Mr. Mastin, I would only make this move against lower rated players.) **6.c4!** (Joe - Correct! White wants to open the diagonal for his bishop on g2.) **6...d4 7.Nbd2 [D]**



(Joe - Not a bad move, but more accurate is to try to open up the center immediately with 7.e3. White has already developed his kingside and castled. With black's king still in the center, and black has only developed one piece so far, so opening up the center makes perfect sense. However, white must act quickly. If black catches up in development and still has the big pawn center, then he will be better.) (Text cont. next col.)

(Cont. from prev.col.) **7...Nf6 8.Re1 Be7** (Joe - Rybka likes 8...Bd6 better. That's what I would like to play, but I must have been afraid of something during the game and felt it was safer to cover the king.) **9.Nf1!** (Joe - White is wasting too much time. He had to play 9...e3 or 9...e4.) **9...0-0 10.e3 e4!** (Joe - Development is about equal, and black has a bit more space, so he has a slight advantage.) **11.dxe4 fxe4** [Inferior is 11...Nxe4 12.exd4 cxd4 13.N1d2] **12.Ng5 Bg4 [D]**

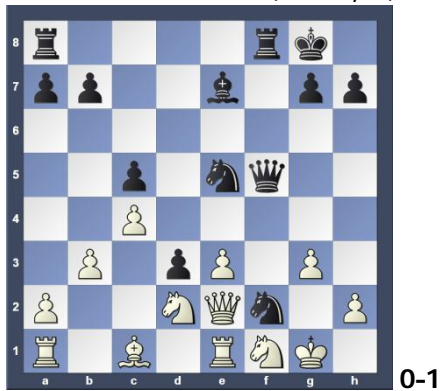


(Joe - The computer found the slightly better 12...d3! The idea is after 13.Nxe4 Nb4! and white must lose and exchange.) **13.f3?** (Joe - This looks like it loses the game. The f-file becomes too much of a liability for white. Rybka suggests 13.Qb3, with equality.) [Better is 13.Qb3!? is the best option White has.] **13...exf3 14.Bxf3** [14.Nxf3 d3 15.h3 Bh5] **14...Qd7!** (Joe - Covering the e6 square so white's knight does not wind up there, and adding more protection to the g4 square.) **15.Bxg4** [15.h3 Bxf3 16.Nxf3 d3] **15...Nxg4** [15...Qxg4?! 16.exd4 cxd4 17.Bd2] **16.Ne4** [16.Nh3] **16...Nce5 17.b3** [17.exd4 there is nothing better in the position 17...Nf3+ 18.Kg2 Qxd4 19.Bf4 Nxe1+ 20.Qxe1] **17...Qf5** (Joe - Rbyka says it is more accurate to simply win the exchange with 17...Nf3+. I wanted to pile up the pressure.) **18.Ned2** [18.Nfd2 the only chance to get some counterplay 18...dxe3 19.Rf1] **18...Nf2** (Joe - Even stronger is 18...dxe3.) **19.Qe2 d3 [D]** (p.4) (Joe - White can save his queen with either 20.g4 or 20.e4, but decides to throw in the towel.) [19...d3 20.e4 Qh3]

### Round: 2

Submitted by Ken with his comments and selected Fritz comments [shown thusly]. (Text cont.p.4)

Position after 19...d3 (From p.3)



0-1

(Cont. from p.3)

White: Kenneth Horan (1950)

Black: Peter Minear (2300)

Date: 7/18/2015

[C28: Vienna Game: 2...Nf6 3 Bc4 Nc6]

1.e4 e5 2.Nc3 Nf6 3.Bc4 [D]



(Ken - I have struggled to find a decent response to 1. ... e5. I've tried the Ruy Lopez a few times recently and found I absolutely hate it. I had been playing the Vienna Game a few years ago and decided to try it again for the lack of a better idea. After this tournament I think I'll be sticking with it for a while.) 3...Nc6 (Ken - Black avoids the craziness that ensues after 3...Nxe4. That move leads to complications that supposedly favors black but I've had good luck against it.) 4.d3 Bb4 5.Bd2 0-0 6.a3 [D]



(Ken - I never had an opponent play Bb4 against me in the Vienna. With my bishop on d2, I decided to gain the bishop pair. The problem is that they really (Text cont. next col.)

(Cont. from prev. col.) are not better than black's knights. Besides which, I'm one of those players that prefers knights to bishops anyway!) 6...Bxc3 7.Bxc3 d5 (Ken - Black is at least equal here.) 8.exd5 Nxd5 9.Bd2 Qd6 10.Nf3 [Black has an active position] 10...Bg4 11.h3 Bh5 12.g4!? [D]

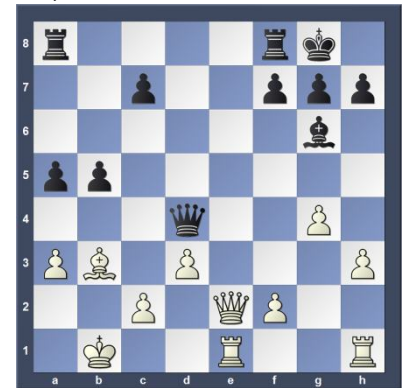


(Ken - With this move I am throwing caution to the wind. I had played Peter several times before and know he is a strong tactician, so I was making an effort to subdue his bishop. My kingside is exposed by the fact I was angling to castle queenside at this point.) 12...Bg6 13.Qe2 Nd4 14.Nxd4 exd4 15.0-0-0 Nc3!? [D]

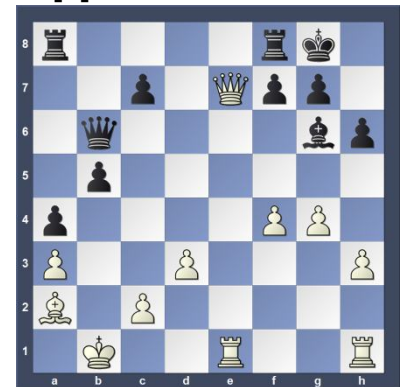


(Ken - This move took me by surprise. The point is that 16.bxc3 is met by Qxa3+ 17.Kb1 dxc3. At the time, I thought I would have had to play 18. Bxc3 and after Qxc3 I would have to play this miserable position a pawn down. The Shredder\* app on my iPad suggests 18.Bc1 which is a definite improvement but the position still looks ugly to me. So instead, I took with the bishop.) 16.Bxc3 [16.bxc3 Qxa3+ 17.Kb1 dxc3=] 16...dxc3 17.Rde1 cxb2+ 18.Kxb2 b5 19.Bb3 [19.Bxb5?? it may look tempting but White must resist capturing the pawn 19...Rab8 20.Qe5 Qc6] 19...Qd4+ 20.Kb1 a5 [D] (Next col.) (Ken - So black has a bit of an attack. Shredder\* evaluates (Text cont. next col.)

Position after 20...a5 (From prev. col.)

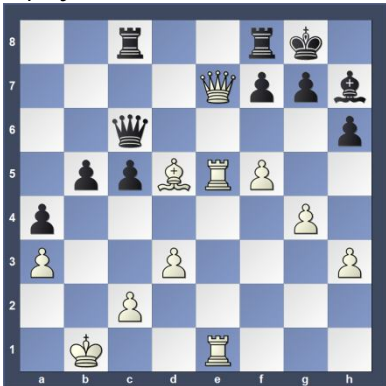


(Cont from prev. col.) the position at -0.34, which is fine as far as I'm concerned. I remember thinking that it was amazing that it was move 20 and material was still even. In all of my previous games with Peter, including my lucky win in time pressure four years ago, I was down material by this point. Because of my exposed king, I spend the next few moves offering a queen trade.) [20...c5 21.Qe5 Rad8 22.Qxd4 Rxd4 23.Ba2] 21.Qe3 Qd6 22.Qe7 Qb6?! (Ken - This does not appear to be the best square for the queen. Shredder\* recommends 22...Qf4. I believe my intention was to retreat to e3, offering the trade again.) [22...Qc6!]=] 23.f4 (Ken - This threatens 24. f5, trapping the bishop. But there's no way Peter is going to let his bishop be shut out of the game, right?) 23...a4 24.Ba2 h6 [D]

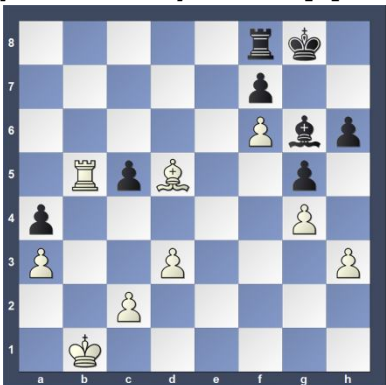


(Ken - Oh my! The bishop does get shut out! At least for a little while, I was expecting some sort of magical sacrifice along the lines of 24...c5 25. f5 b4, or something similar.) [24...c5 25.f5 b4 26.Ka1 (26.fxg6 bxa3+ 27.Kc1 Qb2+ 28.Kd2 Qxa2)] 25.f5 Bh7 26.Re4 c5 7.Rhe1 (Ken - White takes control of the e-file.) 27...Qc6 [27...c4 28.dxc4 bxc4+ 29.Ka1] 28.Re5 (Ken - Shredder\* recommends (Text cont. p.5)

(Cont from p.4) 28. Re6! And shows a +0.82 evaluation after 28...Qg2 29. Qxf7! The point is that 29...Rxf7 30.Re8+ leads to mate and 29...Kxf7 30.Re2+ leaves white a pawn ahead and with a dominating position. I looked at Re6 but did not see these wonderful follow up moves.) [28.Re6 Qg2 (28...fxe6?? 29.Rxe6 Qe8 30.Qxe8 Rxe8 31.Rxe8+ c4 32.Rxf8+ Kxf8 33.dxc4 bxc4 34.Bxc4) 29.Qxf7+ Kxf7 30.R6e2+ Kf6 31.Rxg2 Bg8±] **28...Rac8?** [Better is 28...c4 and Black could well hope to play on.] **29.Bd5 [D]**

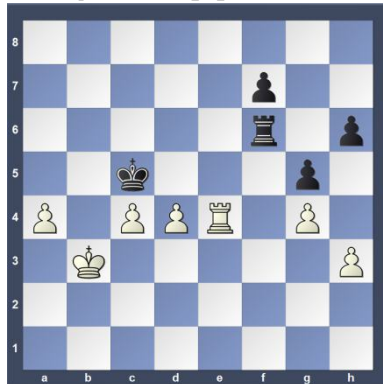


(Ken - There's very little debate concerning which bishop is superior.) **29...Qc7 30.Qxc7** (Ken - There may have been better moves, but at least I do not have to worry about the queen sneaking out to a5 possibly harassing my king at some point. My main concern was to eliminate my opponent's counterplay.) **30...Rxc7 31.Re7** (Ken - Shredder\* evaluates this position as +1.41. I knew I was winning at this point but of course I also knew that this was far from a done deal. Master level players generally don't go down easily and Peter is no exception to the rule.) **31...Rxe7 32.Rxe7 g6** (Ken - Peter begin to extract his bishop.) **33.f6 g5 34.Rb7** [34.Bc6 and White can already relax 34...b4 35.Bxa4 bxa3] **34...Bg6** [Better is 34...b4] **35.Rxb5 [D]**

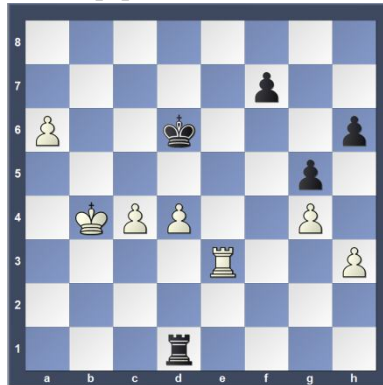


(Ken - Black's queenside falls. White will enjoy a two-pawn advantage for the rest of the game.) **35...Rd8 36.Rxc5 Rd6 37.Ra5 Rxf6 38.Rxa4 Kg7 39.Rb4** (Text cont. next col.)

(Cont. from prev. col.) (Ken - With black's king and bishop stuck on the queenside the obvious plan was to advance the a-pawn.) **39...Ra6 40.a4 Kf6** [40...f5 41.Bb7 Ra5 42.Bc6] **41.Kb2 Ke5 42.Be4** (Ken - Following the general principal of trading pieces when up material.) [Better is 42.Bb7!? makes it even easier for White 42...Ra7 43.d4+ Kd6] **42...Bxe4 43.Rxe4+** [43.dxe4?! Kf4±] **43...Kd5 44.Kb3 Rf6** [44...Kd6 45.Rc4] **45.c4+ Kc5** [45...Kc6 doesn't improve anything 46.Re3] **46.d4+ [D]**

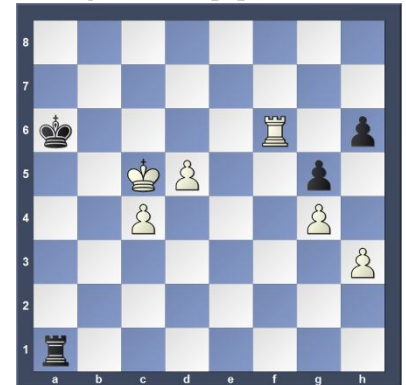


(Ken - Pushing the black king back. It is amazing how powerful two pawns side by side can be, especially if they are passed pawns.) **46...Kd6 47.Re3 Rf1** [47...Rf4 hardly improves anything 48.Kc3] **48.a5 Rd1 49.Kc3 Rc1+** [49...Rb1 doesn't get the cat off the tree 50.Rf3] **50.Kb4 Rd1** [50...Ra1 a last effort to resist the inevitable.] **51.a6! [D]**

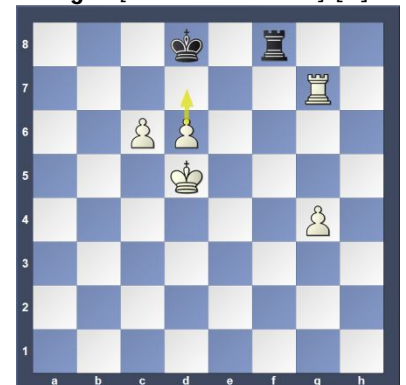


(Ken - Black cannot take the d-pawn and prevent the a-pawn from promoting. Of course, white has a won position but I was running low on time. Peter admitted after the game that this is one of the reasons he played until mate. In addition, we were the last game to finish and there was a huge crowd around the board. I have to admit I was quite nervous by this point.) **51...Kc6** (Text cont. next col.)

(Cont. from prev. col.) [51...Ra1 doesn't do any good 52.Rf3] **52.d5+ [Better is 52.a7 and White has reached his goal 52...Rb1+ 53.Rb3] 52...Kb6 53.Re7 Kxa6** [53...Rb1+ is one last hope 54.Kc3 Rc1+ 55.Kd4 Rd1+ 56.Ke5 Kxa6 57.Rxf7 Kb6 58.Rf6+ Kc5 59.Rc6+ Kb4] **54.Rxf7 Rb1+ 55.Kc5 Ra1** [55...Rb8 is not much help 56.Rf6+ Ka7 57.Rxh6 Rc8+ 58.Kd4] **56.Rf6+ [D]**

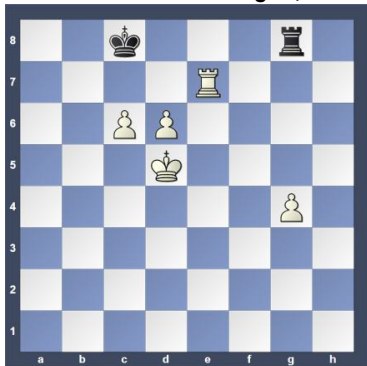


(Ken - Now the kingside falls.) [Better is 56.d6 and White wins 56...Rb1 57.d7] **56...Kb7 57.Rxh6 Ra5+ 58.Kd4 Ra4 59.Rg6 Ra3 60.Rxg5 Rxh3 61.Kc5 Rh7 62.d6 Rf7 63.Kd5 Rf8 64.c5 Kc8 65.c6 Kd8 66.Rg7?** [White intends d7.] [D]

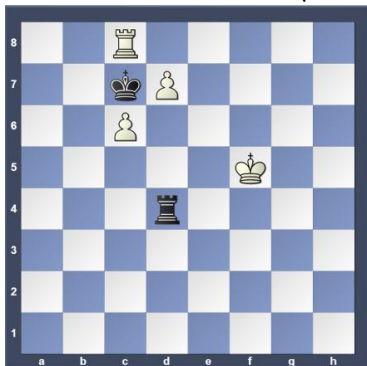


(Ken - White has a mate in 7 beginning with 66. c7+! Now that I am now in the heat of battle I have to admit this move seems obvious, but at the time I was still in my "don't mess this up!" mentality.) **66...Kc8 67.Re7 Rg8 [D]** (p.6) [67...Kb8 does not solve anything 68.d7 Kc7 69.Re8 Rf5+ 70.gxf5 Kb6 71.Rb8+ Ka5 72.Kc4 Ka6 73.d8Q Ka7 74.Ra8#] **68.d7+** (Ken - 68. Re8+! Is a neat shot here; however, the text is good enough to win, even if white has to give up all of his pawns.) **68...Kc7 69.Re8 Rg5+ 70.Ke4 Rxg4+ 71.Kf5 Rd4 72.Rc8+! [D]** (p.6) (Text cont. p.6)

Position after 67...Rg8 (From p.5)

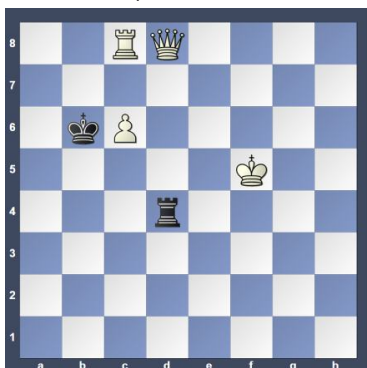


Position after 72.Rc8+! (From p.5)

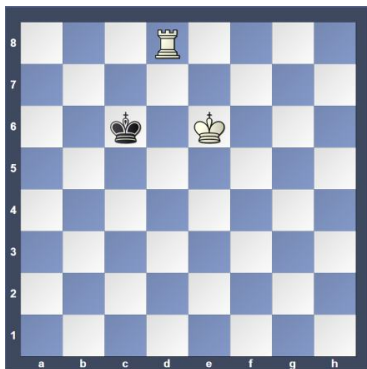


(Cont.

from p.5) (Ken - This clever move forces black to move his king away and surrender his rook.) 72...Kb6 73.d8Q+ [D]



73...Rxd8 74.Rxd8 Kxc6 75.Ke6 [D]



(Ken - White forced checkmate a few moves later.) 1-0

\* <http://www.shredderchess.com>

### Round: 4

Submitted by Eric with his comments and selected Fritz comments [shown thusly].

White: Eric Funk (2065)

Black: Alex Chen (1903)

Date: 7/19/2015

(Text cont. next col.)

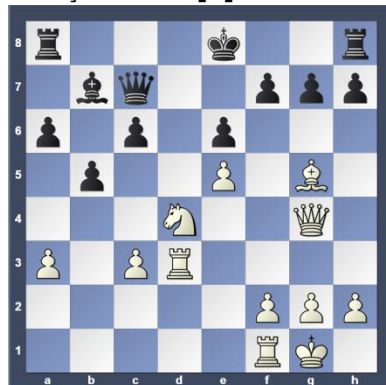
(Cont. from prev. col.) [D31: Queen's Gambit Declined: Semi-Slav] 1.c4 c6 2.e4 e6 3.Nc3 d5 4.d4 Bb4 5.e5 Ne7 6.a3 [D]



6...Bxc3+ 7.bxc3 dxc4 8.Bxc4 b5 9.Bd3 Bb7 10.Qg4 a6 11.Ne2 Ng6 12.Bg5 [D]



12...Nxe5? (Eric - Losing outright.) [Better is 12...Qc7±] 13.dxe5 [13.Bxd8 is the less attractive alternative 13...Nxg4 14.Bh4 c5] 13...Qc7 (Eric - Too late black sees 13... Qxd3 14.Rd1 Q-moves 15.Rd8#.) [13...Qxd3? capturing the bishop loses 14.Rd1 Qxd1+ 15.Kxd1] 14.0-0 Nd7 15.Nd4 Nc5 16.Rad1 [16.Bh4 seems even better 16...Kf8 17.Bc2] 16...Nxd3 (Eric - Giving up. 16... h6 was more stubborn.) [16...h6 is the last straw 17.Be3 Nxd3 18.Rxd3 0-0-0] 17.Rxd3 [D]



(Text cont. next col.)

(Cont. from prev. col.) [17.Nxe6 might be the shorter path 17...Qxe5 18.Nxg7+ Qxg7 19.Rfe1+ Kf8 20.Rxd3] 17...c5 [17...Qxe5 desperation 18.Nf3 h5 19.Nxe5 hxg4] 18.Nxe6! [Mate threat] 18...fxe6 [18...fxe6 19.Qxe6+ Qe7 (19...Kf8 20.Qd6+ Decoy Double attack) 20.Qxe7# Mate attack; ...18...-- 19.Nxc7+ Mate threat] 19.Qxe6+ Kf8 20.Rd7 [D]



[20.Rd7 Qxd7 21.Qxd7 h6 22.e6 Kg8 23.Bf6 Rh7 24.Bd8 Rh8 25.e7 Bd5 26.e8Q+ Kh7 27.Qf5+ g6 28.Qexg6#] 1-0

Many more games to follow in subsequent issues.

### Other places to play chess:

The below are for friendly off hand non-rated games (clocks optional). Bring chess set.

**Monday evenings** about 6:00 to 10:00 PM, "Starbucks", 10 North Main Street, Doylestown, PA

**Tuesday mornings** 9:30 AM to Noon at the Pennridge Community Senior Center in Silverdale, PA. Located on route 113 near route 152

**Daily, Monday thru Friday** 8 to 4, Encore Experiences, (Senior Center), 312 Alumni Avenue, Harleysville, PA

**Wednesday evenings** 7:30 to 10:00 PM, "Christ Reformed Church at Indian Creek" located at 171 Church Road (intersection with Cowpath Road), Telford, PA. (**Note:** Suspended for the summer. Announcement will be issued when it reopens.)

### Allentown Center City Chess Club

**Offer** (from Eric C. Johnson): "For any of our events -- If three or more Lansdale players carpool together -- the designated driver plays for free!"

<http://www.freewebs.com/allentowncentercitychessclub>