

# ~ En Passant ~

Newsletter of the North Penn Chess Club of Lansdale, PA – Summer 2015, Part 2

E. Olin Mastin, Editor

**North Penn Chess Club**

500 West Main Street

Lansdale, PA 19446

[www.northpennchessclub.org](http://www.northpennchessclub.org)

(215) 699-8418 [donfunk@msn.com](mailto:donfunk@msn.com)

This issue will feature games played in the March Swiss and May Quads.

This round of newsletters is going directly from winter to summer omitting spring!

The purpose behind these newsletters is to include as many games as possible played among NPCC members irregardless of the strength of the players. We want to include everyone's games, not only the most challenging. Of course, some will be more instructive than others; however, they all will be permanently recorded for your review. Thanks to all for submitting games!

**Games from the NPCC 2015**

**March Swiss Tournament:**

**Round: 4**

Submitted by Craig with selected Fritz comments [shown thusly].

**White: Craig Gerland (1498)**

**Black: Michael O'Gara (1660)**

**Date: 4/17/2015**

[D15: Slav Defense: 4 Nc3 a6 and gambit lines after 4 Nc3 dxc4] 1.d4 d5 2.c4 c6 3.Nc3 Nf6 4.Nf3 Bf5 [D]



5.cxd5 Nxd5 6.Qb3 Nb6 7.Ng5 e6 8.Nf3 Be7 9.h3 O-0 10.Bf4 N8d7 11.e3 Re8 12.Be2 Nf6 13.0-0 Kh8 14.Ne5 Rf8 [D] (Next col.) 15.Rac1 Nfd5 16.Nxd5 Qxd5 17.Qxd5 Nxd5 [17...cxd5? 18.Rc7 Nc8 19.g4] 18.Bh2 f6 19.Nd7 Rfd8 (Text cont. next col.)

Position after 14... Rf8 (From prev. col.)

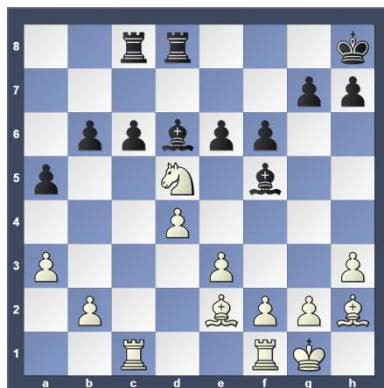


(Cont. from prev. col.) 20.Nc5 b6

21.Nd3 [21.Nb3 Nb4] 21...Rac8

22.a3 a5 23.Nf4 Bd6 24.Nxd5

[D]



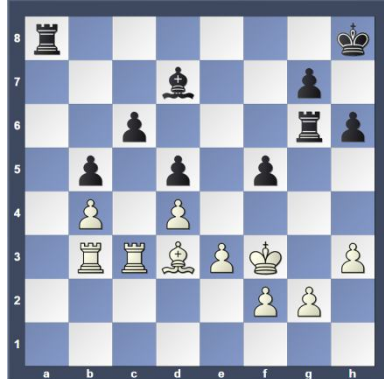
24...Bxh2+ [24...cxd5?? the knight is invulnerable 25.Bxd6 Bc2 26.Ba6]

25.Kxh2 exd5 26.Rc3 Rd6

27.Rfc1 Bd7 28.b4 axb4 29.axb4

Ra8 30.Kg3 f5 31.Bd3 h6 32.Rb3

Rg6+ 33.Kf3 b5 34.Rcc3 [D]



34...Ra1? [34...Rf6 35.Ra3 Rxa3

36.Rxa3] 35.g3? [Ruins a clearly

superior position] [Better is 35.Ra3

seems even better 35...Rxa3 36.Rxa3]

35...Rh1? [35...Re6!? might be a

viable alternative] (Text cont. next

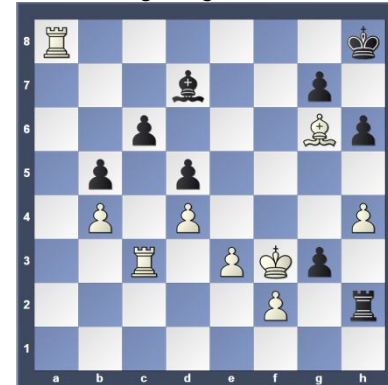
col.)

(Cont. from prev. col.) 36.h4

Rh2? [Better is 36...Kg8!]

37.Ra3 f4? [An oversight. But Black was lost anyway.] [37...Rd6 38.Ra8+

Kh7] 38.Bxg6 fxg3 39.Ra8+ [D]



[39.Ra8+ Be8 40.Rxe8#] 1-0

**Round: 5**

Submitted by Olin with my comments and selected Fritz comments [shown thusly].

**White: Olin Mastin (1500)**

**Black: Craig Gerland (1509)**

**Date: 4/24/2015**

[A08: King's Indian Attack] 1.Nf3 c5

2.g3 d5 3.Bg2 Nc6 4.0-0 e5 5.d3

Nf6 6.Nbd2 h6 [D]



7.Re1 Be7? [Forfeits the advantage]

[Better is 7...e4 and Black is on the

road to success 8.Nh4 g5] 8.e4 d4

9.Nf1 Be6 10.Bd2 b5 11.a3 c4

[Attacks the pawn chain] 12.Rc1 a5

13.Nh4 g6 14.f4 Nd7? [D] (p.2)

[Throwing away the advantage] [Bet-

ter is 14...c3 15.bxc3 dxc3] 15.f5

Bxh4 16.fxe6 fxe6 17.Og4 Bg5

18.Qxe6+ Ne7 19.Bxg5 hxg5

20.Nd2 Qb6 21.Bh3 [D] (p.2)

21...Qxe6 22.Bxe6 [White traps

the enemy king in the center]

(Text cont.p.2)

Page 1 of 6

Position after 14...Nd7? (From p.1)



Position after 21.Bh3 (From p.1)

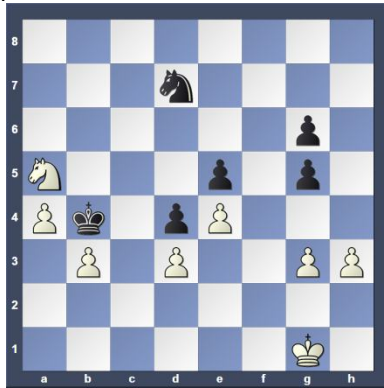


(Cont. from p.1) 22...Nc5 23.Bd5 Rd8? [Better is 23...Nxd5 is a viable option 24.exd5 cxd3] 24.dxc4 bxc4 25.Bxc4 Rb8 26.b3 Rf8 27.Rf1 Kd7 28.a4 Kd6 29.Rce1 Ne6 30.h3 Nc6 [D]

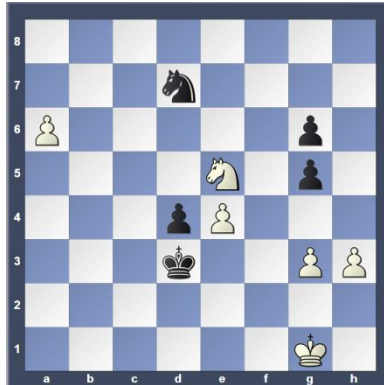


[30...Rbc8 31.Rxf8 Nxf8 32.Rf1] 31.Rxf8 [31.Bd5!? and White can already relax 31...Rbe8 32.Nc4+ Kc5 33.Bxc6 Rxf1+ 34.Rxf1 Kxc6 35.Nxe5+ Kc5] 31...Rxf8 32.Rf1 Nb4 33.Rxf8 [33.Bxe6 Rxf1+ 34.Kxf1 (34.Nxf1?! Kxe6 35.Nd2 Nxc2=) 34...Kxe6 35.Nc4] 33...Nxf8 34.Bd3 Nd7? [Better is 34...Kc5] 35.Nc4+ Kc5? [Better is 35...Kc7] 36.Nxa5 Nxd3 [36..g4 cannot change destiny 37.hxg4 g5 38.Nb7+ Kb6 39.Nd6] 37.cxd3 Kb4 [D] (Next col.) 8.Nc6+ [Better is 38.Nc4 keeps an even firmer grip 38...Nc5 39.Nxe5 Kxb3] 38...Kxb3 [38...Kc3 39.a5 Kxd3] 39.a5 Kc3 40.a6 Kxd3 41.Nxe5+! [D] (Next col.) (Text cont. next col.)

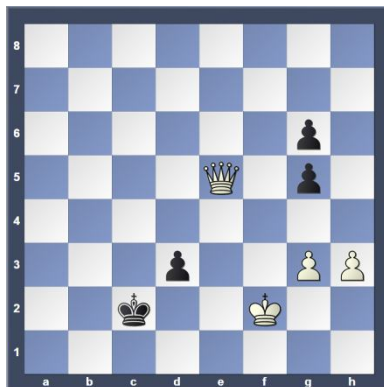
Position after 37...Kb4 (From prev. col.)



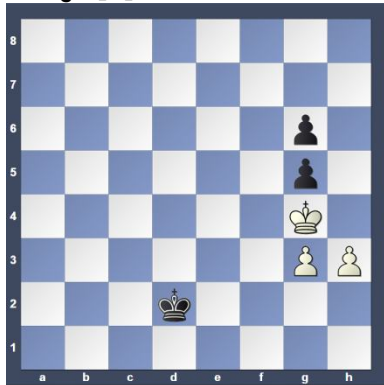
Position after 41.Nxe5+! (From prev. col.)



(Cont. from prev. col.) 41...Nxe5 42.a7 Kxe4 [42...Ke2 43.a8Q d3 44.Qa6] 43.a8Q+ Ke3 44.Qe8 d3 [44...Ke4 the last chance for counterplay 45.Kf2 Kd5] 45.Qxe5+ Kd2 46.Kf2 Kc2 [D]



47.Qe4 Kc3 48.Qe3 Kc2 49.Kf3 d2 50.Qxd2+! Kxd2 51.Kg4 [D]



(Text cont. next col.)

(Cont. from prev. col.) (Olin -- No hope for Black after I sacked the queen on move #50 and could easily attack the sitting duck doubled pawns! What a game!! It's not all that easy to say just which move was Black's downfall thru the opening and middle game. There were many tactical moves by Black where White could have very easily faltered) 1-0

**Games from the NPCC 2015 May Quads Tournament:**

**Round: 1**

Submitted by Joe with his comments and selected Fritz comments [shown thusly].

**White: Joe Mucerino (2104)**

**Black: Eric Funk (2071)**

**Date: 5/8/2015**

[D05: Colle System with ...e6] 1.d4 c5 2.e3 Nf6 3.Nf3 d5 4.c3 Nc6 5.Nbd2 Qc7 6.Bd3 e5 [D]



7.dxe5 Nxe5 8.Nxe5 Qxe5 9.0-0 Bd6 10.Nf3 Qe7 (Joe - Eric avoids the aggressive looking 10...Qh5 because 11.Qa4+ and 12.Qh4 would force a trade a queens.) 11.Re1 (Joe - A waste of time. White should play 11.c4 right away.) 11...0-0 12.c4 dxc4 13.Bxc4 Bf5 [D]



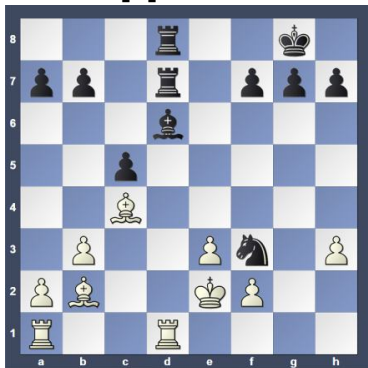
14.b3 (Joe - White cannot tactically play 14.e4 here. For example, 14.e4 Bxe4 15.Nd2 Rae8 16.Nxe4 Nxe4 17.f3 Qe5, hitting h2. Of course, there are many lines, (Text cont. p.3)



(Cont. from p.2) but it looks like white will remain a pawn down.)  
**14...Rad8 15.Qe2 Ne4 16.Bb2 Bg4 17.h3 Bh5 18.Qc2 Bxf3 19.gxf3 Nd2! [D]**

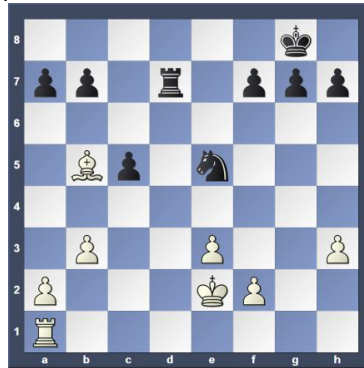


(Joe - I missed this move. Of course, the knight cannot be taken because of 20...Bh2+, winning white's queen.)  
**20.Qf5** [20.Oxd2?? White should leave the knight well alone 20...Bh2+ Decoy: e5 21.Kf1 Rxd2] **20...Qd7?** (Joe - Believe it or not, but according to Rybka, black actually loses much of his advantage after this move. The correct way to continue is 20...Be5! If 21.Bxe5 Qxe5. Avoiding the trade of queens is bad for white after 22.Qg4 Rd6! So if white exchanges with 22.Qxe5 Nxf3+ 23.Kg2 Nxe5, if white moves his bishop then 24...Rd2 gives the d file to black, and if 24.Rad1, then 24.Nxc4 bxc4 and black is a clear pawn up.) [Better is 20...Be5! 21.Bxe5 Qxe5 22.Qxe5 Nxf3+ 23.Kg2 Nxe5] **21.Qxd7 Nxf3+ 22.Kf1 Rxd7 23.Red1 Rfd8 24.Ke2!?** [D]

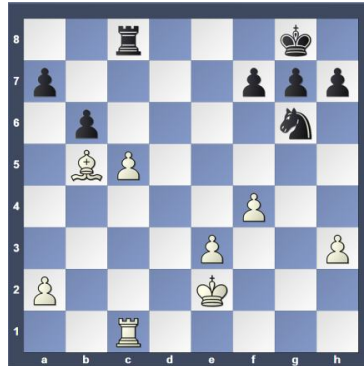


(Joe - An inaccuracy. White should play 24.Bb5.) [Better is 24.Bb5 and White is still in the game 24...Rc7 25.Rd5] **24...Be5 25.Bxe5 Nxe5 26.Rxd7 Rxd7 27.Bb5 [D] (Next col.) 27...Rd8!?** (Joe - It's difficult to criticize this move, but 27...Rd5 would have been more aggressive.) **28.Rc1 b6 29.f4 Ng6 30.b4!** (Joe - I thought that if I could activate my pieces, I would have decent drawing chances, since my king is already close to the center.) **30...Rc8 31.bxc5 [D] (Next col.) (Text cont. next col.)**

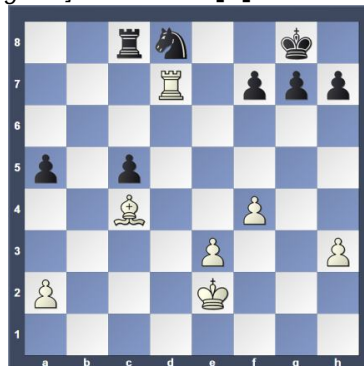
**Position after 27.Bb5 (From prev. col.)**



**Position after 31.bxc5 (From prev. col.)**

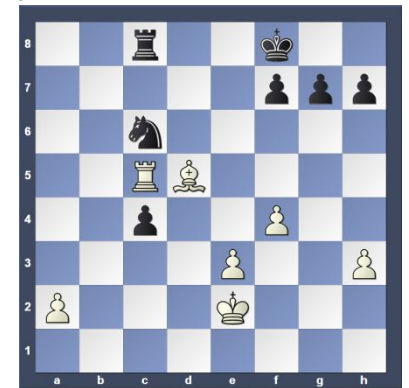


**31...bxc5** (Joe - Rybka preferred 31...Rxc5, but I do not believe it is looking far enough ahead. After 31...Rxc5 32.Rxc5, white's king will capture both of black's queenside pawns. Even if black's knight captures all of white's kingside pawns, the bishop and king will ensure that the knight will never be able to sacrifice itself for the pawn. White will be guaranteed a queen, whereas white's bishop will probably be able to block or sacrifice itself to a black passed pawn.) **32.Rd1 Nf8 33.Rd6 Ne6 34.Bc4** (Joe - Not just blocking the passed pawn, but also threatening 35.Rxe6.) **34...Nd8?** (Joe - This looks like the decisive mistake. Black's knight should return to f8 to protect the d7 square.) [Better is 34...Nf8!?= would keep Black in the game] **35.Rd7 a5 [D]**



(Text cont. next col.)

(Cont. from prev. col.) **36.Bd5?!** (Joe - Not necessary. White should just plunge in with 36.Ra7.) **36...Kf8 37.Ra7 c4 38.Rxa5** [White has a new passed pawn: a2] **38...Nc6??** (Joe - The game continues after 38...c3.) [Better is 38...c3 would save the game 39.Ra8 Rc5] **39.Rc5 [D]**



[39.Rc5 Ne7 40.Rxc8+ Nxc8 41.Bxc4] **1-0**

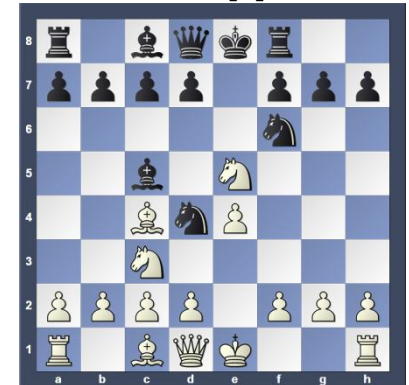
**Round: 1**

Submitted by Charles with his comments and selected Fritz comments [shown thusly].

**White: Charles Siniari (1161)**  
**Black: Ira Siegel (925)**

**Date: 5/8/2015**

[C48: Four Knights: 4 Bb5, replies other than 4...Bb4] **1.e4 e5 2.Nf3 Nc6 3.Bb5 Nf6 4.Nc3 Nd4 5.Bc4 Bc5 6.Nxe5 Rf8? [D]**



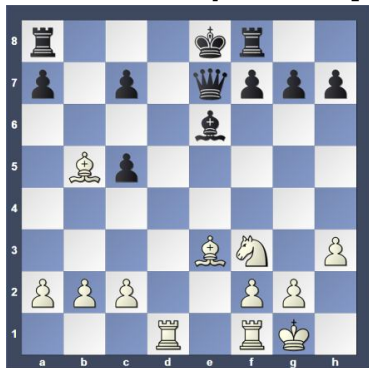
(Charles - Black should just castle.) **7.h3 d6 8.Nf3 b5?** [Better is 8...Be6 9.Bb3 Qe7] **9.Nxb5 Nxb5 10.Bxb5+ Bd7 11.Bc4 Nxe4 12.d4 Qe7** [12...Bb6 13.Qe2 f5] **13.dxc5? [D] (p.4)** (Charles - Black obviously setting up Nc3+ winning the queen. I sensed this move was coming and have no explanation as to why I allowed it.) [Better is 13.0-0 it becomes clear that White will call all the shots 13...Bb6 14.Bd5] **13...Nc3+! 14.Be3!?** (Charles - Maintains (Text cont.p.4) Page 3 of 6

**Position after 13.dxc5? (From p.3)**

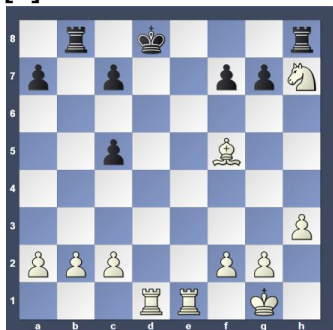


(Cont. from p.3) the ability to castle as well as allowing white to take with the rook; desperately hoping for a positional advantage once the queen is taken.)

**14...Nxd1 15.Rxd1 dxc5?** (Charles - The seemingly obvious move but is incorrect because it fixes white's doubled pawns, creates a new isolated pawns for black, and loses time.) **16.0-0 Be6?** [An unfortunate move that relinquishes the win] [Better is 16...0-0-0 is the best chance 17.Rfe1 Bc6] **17.Bb5+!** [D]



**17...Bd7** (Charles - Forced. Allows white's dream move of Rfe1) **18.Rfe1** [Better is 18.Bxd7+ and White can already relax 18...Qxd7 19.Bxc5] **18...Kd8?** [18...0-0-0 cannot change what is in store for White 19.Ba6+ Kb8 20.Bg5 Qxe1+ 21.Rxe1] **19.Bxd7 Qf6?** (Charles - Black should play ...Qxd7 and exchange the queen for a bishop and a rook and try to win with the two rooks.) [19...Qxd7 the only chance to get some counterplay 20.Bxc5 Re8] **20.Bg5** [Better is 20.Be6+ Ke8 21.Bc4] **20...Qxg5 21.Nxg5 Rb8** (Charles - Black has run out of good moves.) **22.Nxh7 22...Rh8 23.Bf5#** [D]



1-0

**Round: 1**

Submitted by Matt with selected Fritz comments [shown thusly].

**White: Rodion Rubenchik (2324)**

**Black: Matt Martello (1964)**

**Date: 5/8/2015**

[E08: Closed Catalan: Main Line: 7 Qc2] **1.d4 d5 2.Nf3 Nf6 3.c4 e6 4.g3 c6 5.Bg2 Be7 6.0-0 0-0 7.Qc2 Nbd7 8.Rd1 Re8 9.b3 Nf8 10.Nc3 Qc7 [D]**



**11.Bf4 Bd6 12.Bg5 Be7 13.h4 h6 14.Bf4 Bd6 15.Bxd6 Qxd6 16.c5 Qc7 17.e4 dxe4 18.Nxe4 Nd5 [D]**



[The knight is not easily driven from d5] **19.Nd6 Re7 20.Ne5 f5?** [20...Nd7 21.Rac1] **21.h5** [21.Re1 Qd8] **21...Nf6 22.Qe2 Qd8 23.Bxc6! [D]**

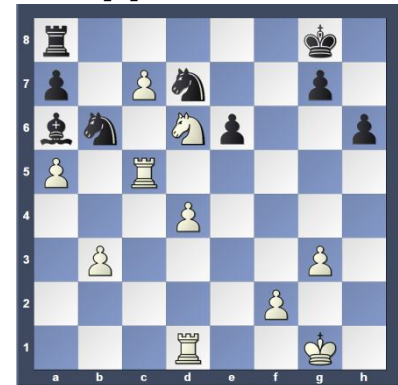


[White gets the advantage] **23...bxc6 24.Nxc6 Qc7 25.Nxe7+ Qxe7 26.Nxf5! [D]** (Next col.) [Deflection: e6] **26...Qf7** (Text cont. next col.)

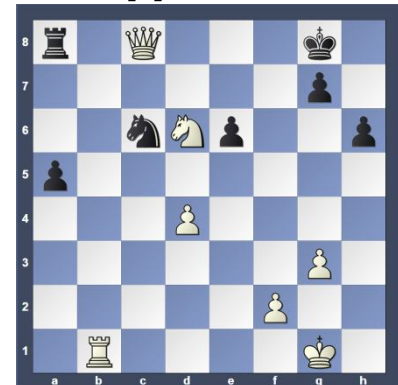
**Position after 26.Nxf5! (From prev. col.)**



(Cont. from prev. col.) [26...exf5 27.Qxe7 Deflection Pinning: ...26...-- 27.Nxe7+ Wins material] **27.Nd6 Qxh5?** [Better is 27...Qc7] **28.Qxh5 Nxh5 29.c6 Nf6 30.Rac1 Nd5 31.Rc5 Ba6** [Better is 31...Ng6] **32.c7 Nb6 33.a4 Nfd7 34.a5! [D]**



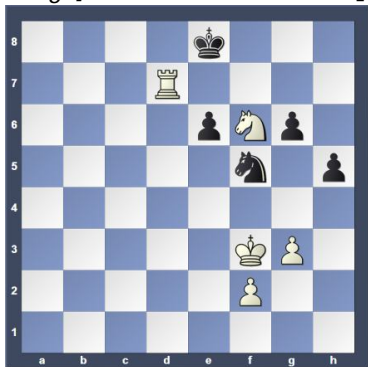
[It's all over] **34...Nxc5** [With idea 34...-- 35.axb6 Wins material] **35.axb6** [35.dxc5? looks very tantalizing, but 35...Nd5] **35...Nxb3?!** [Doesn't do very much to defend the position] [35...Nd7 36.Ra1 Bc8] **36.Rb1 Na5 37.b7 Bxb7 38.Nxb7 Nc6** [38...Rc8 the only chance to get some counterplay 39.Nxa5 Rxc7] **39.Nd6 a5** [39...Kf8 is not the saving move 40.c8Q+ Rxc8 41.Nxc8] **40.c8Q+ [D]**



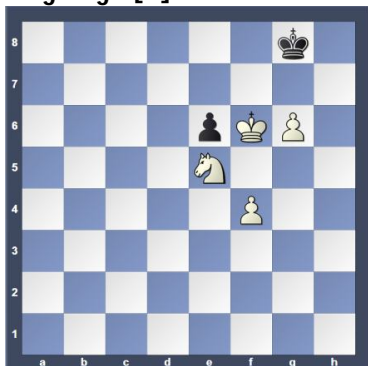
**40...Rxc8 41.Nxc8 Nxd4 42.Ra1 h5 43.Rxa5 g6** (Text cont. p.5)



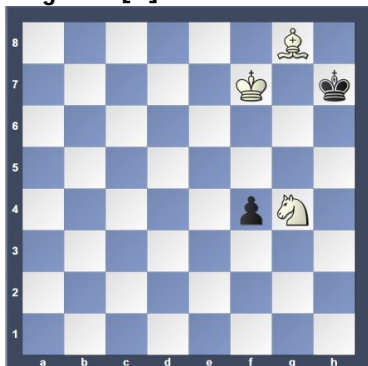
(Cont. from p.4) 44.Kg2 Kf7 45.Nd6+ Ke7 46.Ne4 Kf7 47.Ra7+ Kf8 48.Rd7 Nf5 [48...Nb3 49.Kf3 e5 50.Rd5 Nd4+ 51.Kg2] 49.Kf3 Ke8 50.Nf6+ [D]



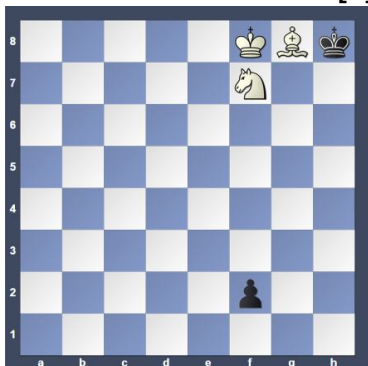
50...Kf8 51.Kf4 Nh6 52.Kg5 Nf7+ 53.Rxf7+! Kxf7 54.f4 Kg7 55.Nd7 Kf7 56.Ne5+ Kg7 57.Nxg6 Kf7 58.Ne5+ Kg7 59.Kxh5 Kf6 60.g4 Kg7 61.Kg5 Kh7 62.Kf6 Kg8 63.g5 Kf8 64.g6 Kg8 [D]



65.Ng4 e5 66.g7 Kh7 67.Kf7 exf4 68.g8B+! [D]



68...Kh8 69.Kf8 [69.Ne5 f3 70.Ng6#] 69...f3 70.Nh6 f2 71.Nf7#![D]



0-1

### Round: 1

Submitted by Craig with selected Fritz comments [shown thusly].

White: Dan Frederick (1653)

Black: Craig Gerland (1534)

Date: 5/8/2015

[B34: Sicilian: Accelerated Dragon with

5 Nc3: sidelines] 1.e4 c5 2.Nf3 g6

3.d4 cxd4 4.Nxd4 Nf6 5.Nc3 Nc6

6.f3 Bg7 7.Be3 0-0 8.Qd2 d5

9.0-0-0 [D]



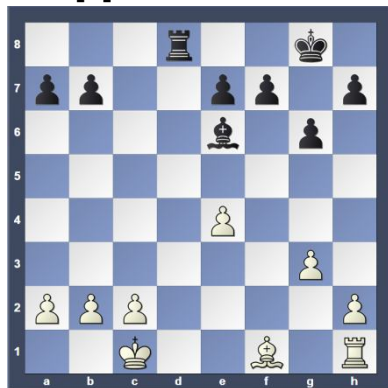
9...dxe4 10.Nxe4 Nxe4 11.fxe4

Nxd4 12.Bxd4 Bxd4 13.Qxd4

Qxd4 14.Rxd4 Be6 15.g3 Rfd8

[Instead of 15...Bxa2 16.b3] 16.Rxd8+

Rxd8 [D]



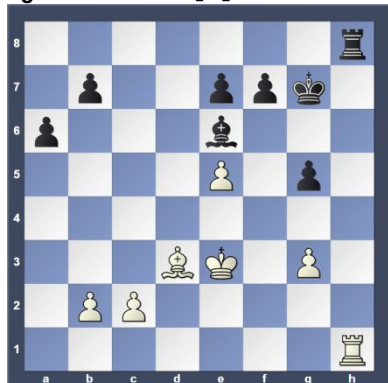
17.Bd3 [Better is 17.b3!?!- must definitely be considered]

17...Bxa2

18.Kd2 Be6 19.Ra1 a6 20.Ke3 g5

21.h4 h6 22.hxg5 hxg5 23.Rh1

Kg7 24.e5 Rh8 [D]



[24...Rd5 25.Ke4μ] 25.Be4? [Better is

25.Rxh8 is the best option White has

25...Kxh8 26.Kd4] 25...Rxh1 (Text

cont. next col.)

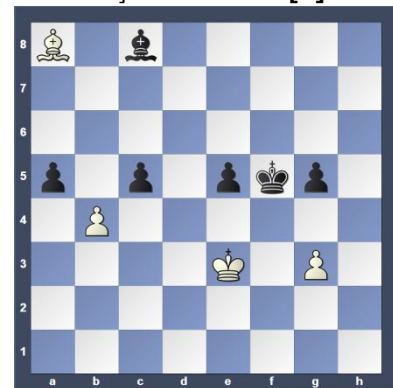
(Cont. from prev.col.) 26.Bxh1

Bc8 27.c4 b6 28.Kd4 f5

29.exf6+ Kxf6 30.Ba8 e5+

31.Ke3 Kf5 32.b4 a5 [Better is

32...Ke6!?] 33.c5 bxc5 [D]



34.bxc5? [Better is 34.bxa5 would

bring relief 34...Ba6 35.Be4+ Ke6

36.Kd2] 34...a4 35.Bd5 a3 36.c6

Be6 [Better is 36...Kf6 and the rest is

a matter of technique] 37.c7 Bc8

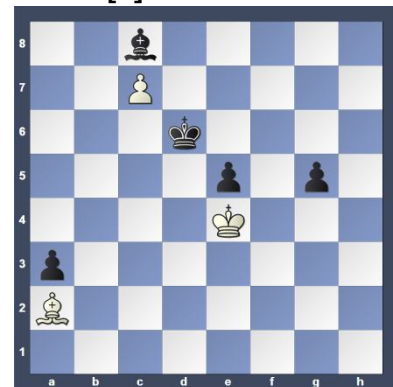
38.Kf3? [Better is 38.Bc4] 38...Kf6

39.g4 [39.Bc4 is still a small chance

39...Bb7+ 40.Ke3] 39...Ke7 40.Ke4

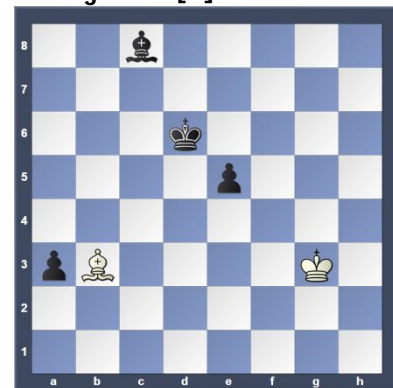
Kd6 41.Ba2 Bxg4 42.Bb3 Bc8

43.Ba2 [D]



43...g4 44.Bb3 g3 45.Kf3 Kxc7

46.Kxg3 Kd6 [D]



0-1

### Round: 1

Submitted by Olin with my comments and selected Fritz comments [shown thusly].

White: Don Funk, (1633)

Black: Olin Mastin (1543)

Date: 5/8/2015 (Text cont. on

p.6)

(Cont. from p.5) [D04: Colle System]  
 1.d4 d5 2.e3 Bf5 3.Nf3 Nc6 4.Bd3 [D]



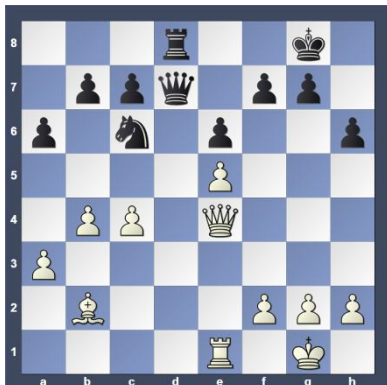
...Bxd3 5.Qxd3 Nf6 6.a3 e6 7.0-0 Be7 8.Nbd2 0-0 9.c4 h6 10.b4 a6 11.e4 dxe4 12.Nxe4 [D]



12...Nxe4 13.Qxe4 Bf6 14.Bb2 Qe7 15.Ne5 [D]



15...Bxe5 16.dxe5 Rfd8 17.Rad1 Rd7 18.Rxd7 Qxd7 19.Re1 Rd8 [D]

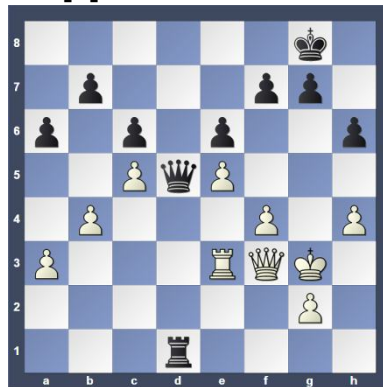


(Olin -- Now Black dominates the d-file)  
 20.f4 Qd2 21.Re2 Qd3 22.Kf2 Qd1 23.c5 Qh1 [D] (Next col.) (Text cont. next col.)

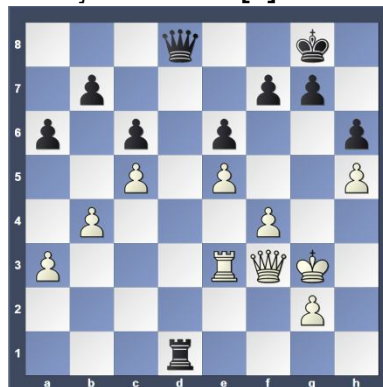
Position after 23...Qh1 [D] (From prev. col.)



(Cont. from prev. col.) 24.Kg3 Qd1 25.Kf2 Qh1 26.h3 Rd1 27.Kg3? [27.Re1 Rd2+ 28.Re2 Qd1] 27...Qg1 [Better is 27...Ne7!! (Olin -- Yes! Too bad I never thought to play that!) and Black can already relax 28.Kg4 Nf5 29.a4 (29.Qxb7 fails to the following nice mate 29...Rd3 30.Qa8+ Kh7 31.Qf3 Rxf3 32.Kxf3 Qf1+ 33.Rf2 Qd3+ 34.Kg4 Qg3+ 35.Kh5 Qh4#) ] 28.Qf3? [28.Qe3 Qxe3+ 29.Rxe3 Ne7] 28...Nd4 [Better is 28...Ne7 it becomes clear that Black will call all the shots 29.Kg4 Rf1] 29.Bxd4 Qxd4 30.Re3 [30.Qxb7?? White will not be able to digest the pawn 30...Rd3+ 31.Qf3 Rxf3+ 32.gxf3 a5] 30...c6 31.h4 Qd5 [D]

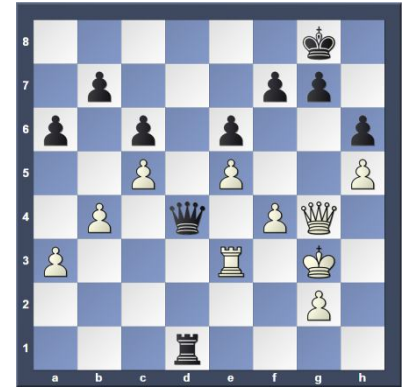


(Olin -- If White trades queens, Black gets a nice passed pawn!) [31...g6 32.Kh2] 32.h5 Qd8 [D]



33.Qg4 Qd4 [D] (Next col.) (Text cont. next col.)

Position after 33...Qd4 [D] (From prev. col.)



34.Qf3 (Olin -- What other choice does White have?) 34...Qd8 35.Qg4 Qd4 36.Qf3 Qd8 [Draw by threefold repetition] 37.Qg4 Qd4 1/2-1/2

This concludes this issue. I have to keep the final size of the "pdf" file below 2MB or the file will not upload.

**Other places to play chess:**

The below are for friendly off hand non-rated games (clocks optional). Bring chess set.

**Monday evenings** about 6:00 to 10:00 PM, "Starbucks", 10 North Main Street, Doylestown, PA

**Tuesday mornings** 9:30 AM to Noon at the Pennridge Community Senior Center in Silverdale, PA. Located on route 113 near route 152

**Wednesday evenings** 7:30 to 10:00 PM, "Christ Reformed Church at Indian Creek" located at 171 Church Road (intersection with Cowpath Road), Telford, PA. (**Note:** Suspended for the summer. Announcement will be issued when it reopens.)

**Daily, Monday thru Friday** 8 to 4, Encore Experiences, (Senior Center), 312 Alumni Avenue, Harleysville, PA

**Allentown Center City Chess Club Offer** (from Eric C. Johnson): "For any of our events -- If three or more Lansdale players carpool together -- the designated driver plays for free!"

<http://www.freewebs.com/allentowncentercitychessclub>