

~ En Passant ~

Newsletter of the North Penn Chess Club of Lansdale, PA – Fall 2014, Part 3

E. Olin Mastin, Editor

North Penn Chess Club
 500 West Main Street
 Lansdale, PA 19446
www.northpennchessclub.org
 (215) 699-8418
donfunk@msn.com

This issue will feature games played in October, and November 2014. Thanks to all for submitting games!

Games from the NPCC 2014 October Quads Tournament: Round: 3

Submitted by Eric with his comments and selected Fritz comments [shown thusly].

White: Matt Martello (1899)

Black: Eric Funk (2056)

Date: 10/31/2014

[B00: Queen's Fianchetto Defense, Nimzowitsch Defense] **1.e4 Nc6 2.Nf3 d6 3.d4 Nf6 4.Nc3 Bg4 5.Be2 e6 6.Be3 a6 7.Ng5 [7.d5!? Ne7 8.0-0] 7...Bxe2 8.Qxe2 [Instead of 8.Nxe2 h6 9.Nf3 Nxe4] 8...h6 9.Nh3 d5 10.e5 Ne4 [D]**



(Eric - The concept that White will be too preoccupied with various threats to win the e4-pawn outright doesn't work.)

[10...Nd7 11.Nf4] 11.Nxe4 dxe4 12.c3 Qh4 [12...g5 13.0-0] 13.Bf4 0-0-0 14.Bg3 Qe7 15.Qxe4!? [D]

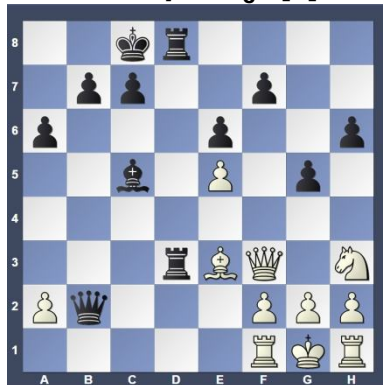


cont. next col.)

(Cont. from prev.col.) (Eric - Fritz will probably call this move a blunder but it's the only move. After say 15.... g5 White castles, consolidates, and wins.) [15.0-0-0!?] **15...Nxd4 16.cxd4 Qb4+ 17.Kf1 Rxd4 18.Qc2 Rd2 19.Qc3 [19.Qb3!? is interesting 19...Rxb2 20.Qxb4 Bxb4 21.Ng1] 19...Qb5+ 20.Kg1 Bb4 [D]**

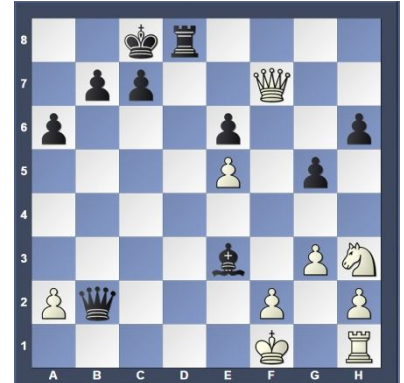


(Eric - Time is more important than material; Black needs all of his pieces in the fight before White untangles his Kingside.) **21.Of3 Rhd8 22.Bf4 R2d3 23.Be3 Bc5 [23...g5 24.a3 Bc5] 24.Rb1? [24.Nf4 was much better 24...Qxb2 25.Re1 (25.Nxd3?? would lead to destruction 25...Qxa1+ 26.Bc1 Qb1)] 24...Qxb2 25.Rf1 [25.Rxb2? will give the opponent a chance to mate in 2 25...Rd1+ 26.Qxd1 Rxd1#] 25...g5 [D]**

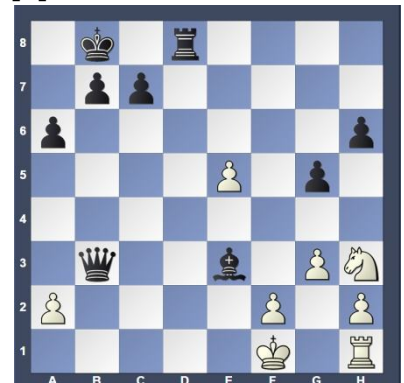


(Eric - Keeps the Nh3 on the sidelines.) **26.Qxf7?! [26.Bc1 Qxe5 (26...Rxf3?! is much weaker 27.Bxb2 Rfd3 28.g3) 27.Qg4 b5] 26...Rd1 [Weaker is 26...Qxe5 27.Of3] 27.g3 [27.Bxc5? mating in 2 27...Rxf1+ 28.Kxf1 Rd1#; 27.Qxe6+? It may look tempting (Text cont. next col.)**

(Cont. from prev.col.) the pawn **27...Kb8 28.g3 Rxf1+ 29.Kxf1 Qb1+ 30.Kg2 Qe4+ 31.f3 Qxe3] 27...Rxf1+ 28.Kxf1 Bxe3 [D]**

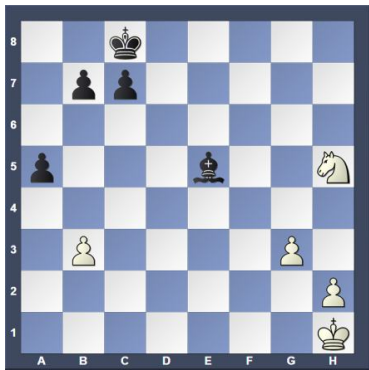


(Eric - Wins material: 29.fxe3? Rd1#.) **29.Qxe6+ Kb8 30.Qb3 [30.Kg2 Rd2 31.Rf1 Bc5] 30...Qxb3 [D]**

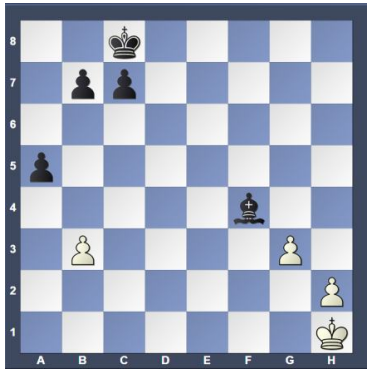


(Eric - On hindsight 31... Qc1+ 32.Kg2 Qc6+ 33.Kg1 Bb6 is crushing. The text leads to what should be a winning endgame.) [30...Qc1+ and the result of the game is clear: Black will win 31.Ke2 Qxh1 32.Kxe3 g4] **31.axb3 Rd1+ 32.Kg2 Rxb1 33.Kxb1 g4 34.Nf4? [The position was bad, and this mistake simply hastens the end. 34.Ng1 Bxf2 35.Ne2] 34...Bxf2 [34...Bxf4 and Black wins 35.e6 Kc8] 35.Nd5 Kc8 36.Nf6 [36.Kg2!? Bc5 37.Kf1] 36...Bd4 37.Nxg4 h5 38.Nf6 Bxe5 39.Nxh5? [Simply worsens the situation. 39.Nd5] 39...a5 [D] (p.2) (Eric - Pawn races on both sides of the board generally favor the Bishop over the Knight. This is no exception.) **40.Nf4 [40.Kg2 there is nothing better in the position 40...b5 41.Kf3] 40...Bxf4 [D] (p.2) (Eric - And Black wins. (Text cont. p.2)****

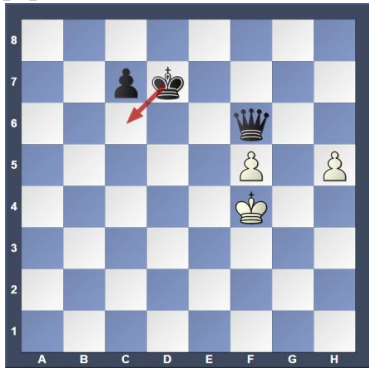
Position after 39...a5 (From p.1)



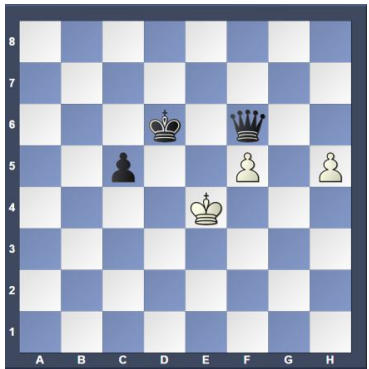
Position after 40...Bxf4 (From p.1)



(Cont. from p.1) He queens first and with a check.) 41.gxf4 b5 42.h4 a4 43.bxa4 bxa4 44.h5 a3 45.Kg2 a2 46.Kg3 a1Q 47.Kg4 Qf6 48.f5 Kd7 49.Kf4 [D]



49...Kd6 50.Ke4 c5 [D]



0-1

Round: 1

Submitted by Olin with selected Fritz comments [shown thusly].

White: Rich Briggs (1590)

Black: Olin Mastin (1519)

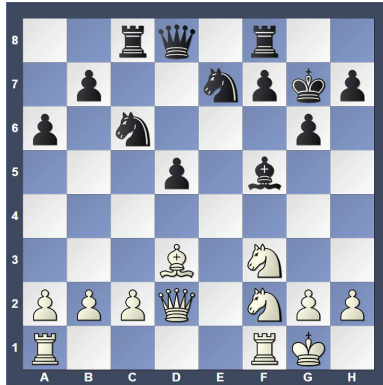
Date: 10/17/2014

[B54: Sicilian: 2...d6 3 d4 cxd4 4 Nxd4, Unusual Lines] (Text cont. next col.)

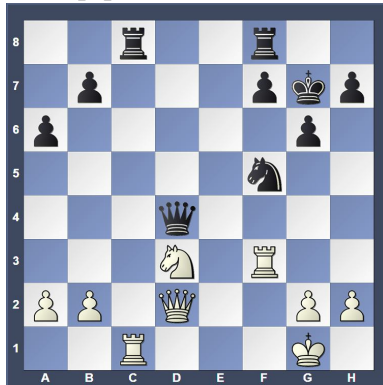
(Cont. from prev.col.) 1.e4 c5 2.Nf3 Nc6 3.d4 cxd4 4.Nxd4 d6 5.Nc3 a6 6.f4 e6 7.Nf3g6 [7...Be7 8.Bd3=] 8.Be3 Bg7 9.Qd2 Nge7 10.Be2 0-0 [D]



11.f5? [11.0-0 and White is still in the game] 11...exf5 12.Bh6 fxe4 13.Bxg7 Kxg7 [13...exf3?! 14.Bxf8 fxg2 15.Rg1 Qxf8 16.Bf3=] 14.Nxe4 d5 15.Nf2 [15.0-0-0 Nf5 (15...dxe4?! 16.Qc3+ f6 17.Rxd8 Rxd8 18.Nd2) 16.Qxd5 Qe7] 15...Bf5 [15...Qb6 16.c3] 16.0-0 [16.g4!? Be6 17.0-0-0] 16...Rc8 [16...Qb6 17.c4 dxc4 18.Bxc4] 17.Bd3 [D]

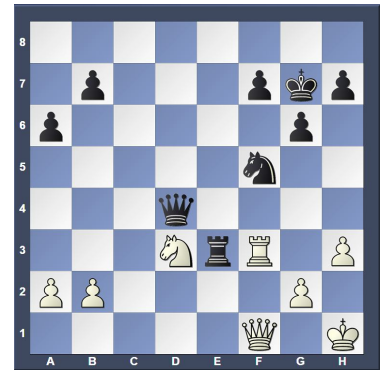


17...Bxd3 [17...Qb6 18.Qc3+ d4 19.Qb3 Qxb3 20.axb3 Bxd3 21.Nxd3] 18.Nxd3 d4 19.c3 [19.Ng5!? Qd5 20.Nf4] 19...Nf5 20.cxd4 [20.Rac1] 20...Ncx4 21.Rac1 [21.Nxd4 Qxd4+ 22.Kh1 Rfe8] 21...Nxf3+ [21...Rxc1!? 22.Rxc1 Nxf3+ 23.gxf3 Qd4+ 24.Kh1] 22.Rxf3 Qd4+ [D]

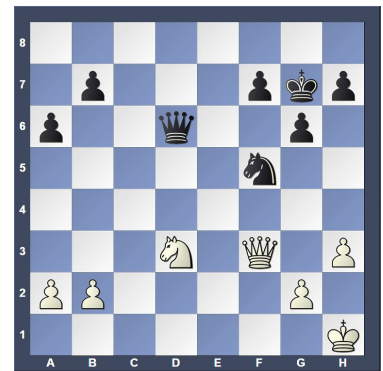


23.Kh1 Rxc1+ 24.Qxc1 Re8 (Text cont. next col.)

(Cont. from prev. col.) 25.h3 Re2 26.Qf1 [26.a3 b6] 26...Re3 [D]



[26...Rd2!? and Black can already relax 27.a3] 27.Kh2? [27.Rxe3 Nxe3 28.Qe2 f5] 27...Rxf3 [27...Qd6+ 28.Kg1 Ng3] 28.Qxf3 Qd6+ [28...Ne3 29.Nf4] 29.Kg1 Qd4+ 30.Kh1? [30.Kh2 Ne3 31.Qe2 f5] 30...Qd6 [30...Ne3 31.Nf2] 31.Kg1 Qd4+ [Twofold repetition] 32.Kh1 Qd6 [D]



1/2-1/2

Round: 3

Submitted by Charles with his comments and selected Fritz comments [shown thusly].

White: Charles Siniari (Unr)

Black: Forrest Hendricks (1049)

Date: 10/31/2014

[B43: Sicilian: Kan Variation: 5 Nc3] 1.e4 c5 2.Nf3 e6 (Charles - This is the first time I had seen this variation of the Sicilian.) 3.d4 cxd4 4.Nxd4 a6 5.Nc3 b5 6.Be2 (Charles - Preparing to castle.) 6...Bb7 7.0-0 Nf6 [D]



(Text cont. p.3)

(Cont. from p.2) **8.Re1** [8.e5!? b4 9.exf6 bxc3 10.fxg7 Bxg7 11.bxc3] **8...Nxe4** (Charles - Goes for material rather than finishing his development.) **9.Bf3** [9.Nxe4!? Bxe4 10.Bxb5 axb5 11.Rxe4] **9...Nxc3** **10.bxc3 Bxf3** [10...Nc6!?= should be investigated more closely] **11.Qxf3** [White has a king attack. Less advisable is 11.Nxf3 Be7] **11...Ra7** [D]

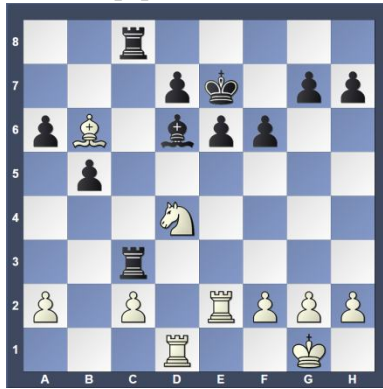


(Charles - Forced) **12.Bd2** (Charles - To connect the rooks.) [12.Bf4 Ba3] **12...Bc5** (Charles - Hanging a piece to attack one of lesser value.) [Black should quickly conclude development.] **13.Qg3!** (Charles - Attacks the back rank and the g7 pawn.) [13.Nf5 0-0 14.Nxg7 Kxg7 15.Qg3+ Kh8 16.Qe5+ f6 17.Qxc5] **13...Qf6?** [D]

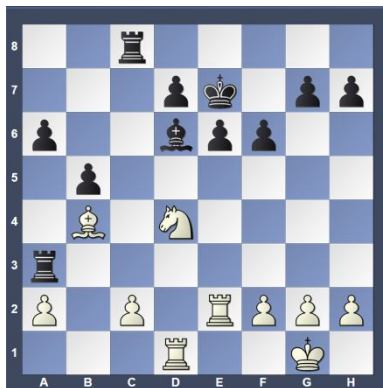


(Charles - Attempting to protect the pawn but further weakens the back rank.) [13...0-0 was necessary] **14.Qxb8+** [14.Bg5 and White takes home the point 14...Qxg5 15.Qxg5 Bxd4 16.cxd4 0-0] **14...Qd8** **15.Qxd8+** [15.Qe5 ends the debate 15...Bf8 16.Nf5 Rg8] **15...Kxd8** (Charles - Trading while I'm up and taking away his ability to castle.) **16.Nb3 Bd6** [16...Ba3 17.Be3 Rb7 18.Na5] **17.Rad1** [17.a4!? seems even better 17...bxa4 18.Rxa4 Ke7] **17...Ke7** **18.Bg5+** (Charles - Clearing up the rook's view of the d-file.) **18...f6** **19.Be3 Rc7** **20.Bb6** [20.Rd3!? Ba3 21.Red1] **20...Rxc3** (Charles - Winning a pawn but further weakens his position.) (Text cont. next col.)

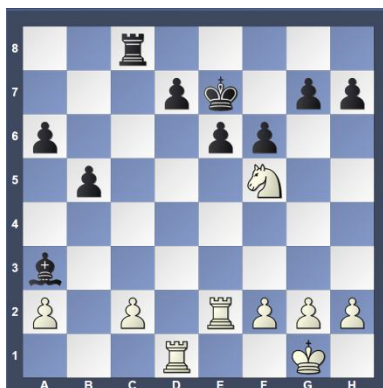
(Cont. from prev. col.) **21.Re2** (Charles - To cover the pawn. Not Rd2 so the rooks cannot be skewered by his dark squared bishop.) **21...Rhc8?** [21...Bb4] **22.Nd4?** [D]



[22.Red2 R8c6 23.Be3 Rxc2 24.Na5 Rxd2 25.Nxc6+ (<25.Bxd2 Rc2) 25...dxc6 26.Bxd2] **22...Be5** **23.Ba5 Ra3?** [23...Bxd4 is the best chance 24.Bb4+ Ke8 25.Rxd4 Rxc2] **24.Bb4+ Bd6** [D]

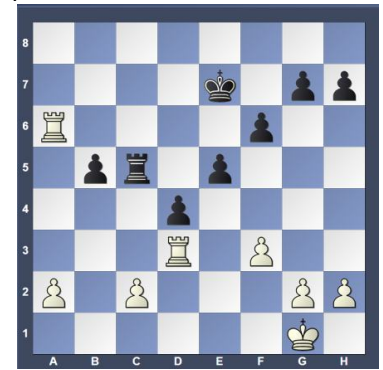


25.Bxa3 Bxa3 **26.Nf5+** [D]

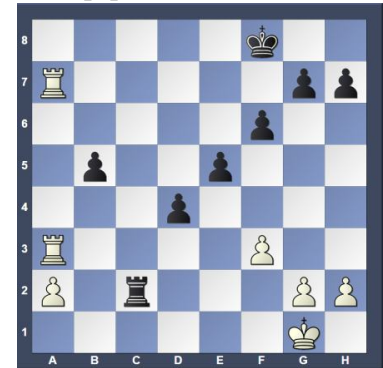


(Charles - Exploits the pin.) **26...Kf7** **27.Nd6+** (Charles - Ridding the board of the bishop.) **Bxd6** **28.Rxd6 Ke7** **29.Rxa6 Rc5** **30.Rd2 d5** **31.f3** (Charles - Provides a flight square and frees the king to move towards the middle for the end game.) [31.f4 makes it even easier for White 31...Kf7] **31...e5** **32.Rd3** [32.Ra7+!? keeps an even firmer grip 32...Ke6 33.Rxg7 h5] **32...d4?** [D] (Next col.)

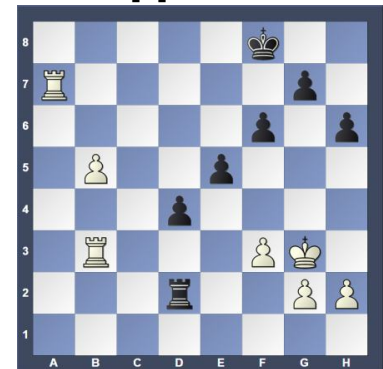
Position after 32...d4? (From prev.col.)



(Charles - Better is b4 to stop the rooks from connecting on the a-file.) **33.Ra7+** (Charles - Necessary to make room for my other rook.) **33...Kf8** **34.Rda3 Rxc2** [D]

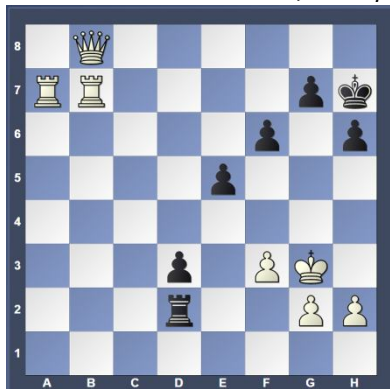


(Charles - At this point Forrest wrote Ra8+ as my next move on his score sheet before I actually moved. Indeed, I had thought this, but then dismissed it because of: 35.Ra8+ Kf7 36.Ra7+ Kg6 and the king finds protection among the pawns that will be hard to break up for checkmate.) **35.Rb3!?** [35.Rd7 seems even better 35...Rc8 36.Raa7 g6] **35...Rc5** **36.a4 h6** **37.axb5 Rc1+** **38.Kf2 Rc2+** **39.Kg3** (Charles - And he's out of checks.) **39...Rd2** [D]



40.b6 Kg8 **41.b7 d3** **42.b8Q+ Kh7** **43.Rbb7** [D] (p.4) **1-0** (Charles - To play what out could (Text cont. p.4)

Position after 43.Rbb7 (From p.2)



(Cont. from p.3) have happened:

a, 42...Rd1 44.Rxg7#
or b, 43...Kg6 44. Rxg7+ Kh5 45.Qe8#
or c, 43...Kf5 44.Qc8#)

**Games from the NPCC 2014
November Octagonal
Tournament:**

Round: 1

Submitted by Doug with his comments and selected Fritz comments [shown thusly].

White: Doug Kern (1956)

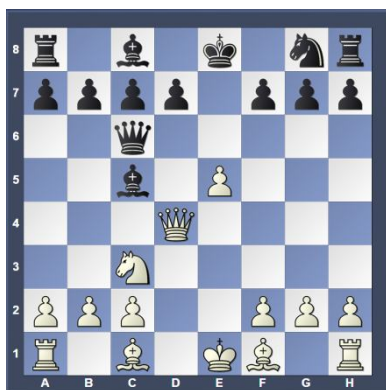
Black: Bob Kampia (1737)

Date: 11/7/2014

[C45: Scotch Game] 1.e4 e5 2.Nf3 Nc6 3.d4 [D]



3...exd4 4.Nxd4 Nxd4 5.Qxd4 Qf6
6.e5 Qc6 7.Nc3 Bc5 [D]

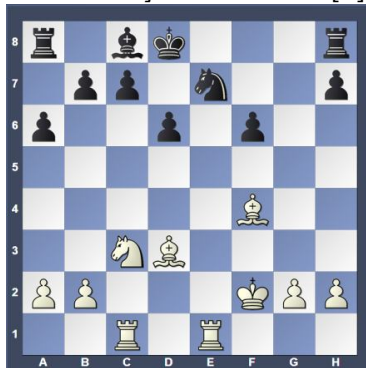


8.Qg4 Qg6 9.Qf3 Qxc2? [A blunder in a bad position. 9...Ne7 10.Bd3 Qc6] 10.Bd3 [D] (Next col.)
10...Qxf2+ (Doug - Bxf2+?? does not work because 11.Kf1! and Black's (Text cont. next col.)

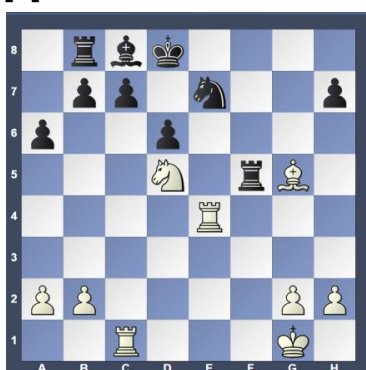
Position after 10.Bd3 (From prev. col.)



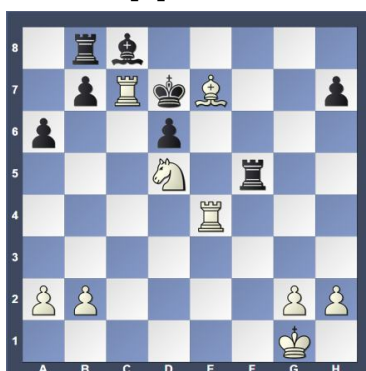
(Cont. from prev. col.) queen is lost.) [10...Bxf2+ 11.Kf1 Qxd3+ 12.Qxd3 Bb6] 11.Qxf2 Bxf2+ 12.Kxf2 Ne7 13.Bg5 a6 14.Rac1 f6 [14...Rb8 15.Bxe7 Kxe7 16.Nd5+ Kd8 17.Nxc7] 15.exf6 gxf6 16.Bf4 d6 [16...b5 17.Rhe1 Bb7 18.Ne4] 17.Rhe1 Kd8 [D]



18.Be4 Rb8 19.Nd5 f5 20.Bg5 fxe4 21.Rxe4 Rf8+ 22.Kg1 Rf5 [D]



23.Bxe7+ [23.Nxe7?! Rxc5 24.Rf1 c6; Not 23.Rxe7 Rxc5] 23...Kd7 24.Rxc7+ [D]



1-0

Round: 1

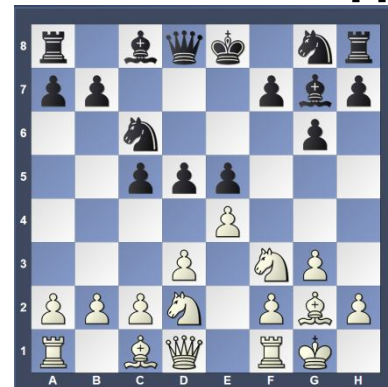
Submitted by Olin with selected Fritz comments [shown thusly].

White: Olin Mastin (15290)

Black: George Murphy (1420)

Date: 11/7/2014

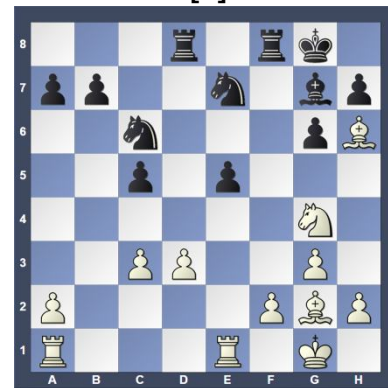
[08: King's Indian Attack] 1.Nf3 d5 2.g3 g6 3.Bg2 Bg7 4.d3 c5 5.Nbd2 Nc6 6.O-O e5 7.e4 [D]



7...Nge7 8.Re1 O-O 9.c3 [Consolidates b4+d4] 9...f5? [Gives the opponent counter play. 9...d4 10.cxd4 Nxd4 11.Nxd4 cxd4 12.a4] 10.exf5? [White loses the upper hand. 10.exd5 the advantage is on the side of White 10...Nxd5 11.Nc4] 10...Bxf5 11.Nf1 Bg4 [11...h6!? is an interesting idea] 12.Ne3 Be6 13.Ng5 Qd7 14.Nxe6 Qxe6 15.Qg4 [D]

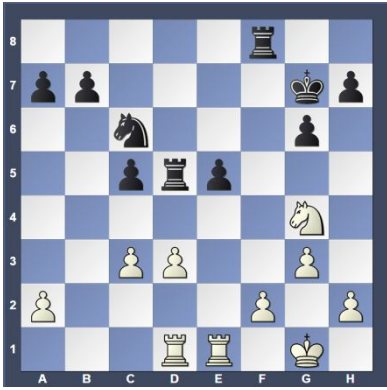


[15.Qb3!? Rad8 16.Qxb7] 15...Qxc4 16.Nxc4 d4 [16...h5 17.Ne3 Rad8 18.Bd2] 17.Bh6 dxc3 18.bxc3 Rad8 [D]

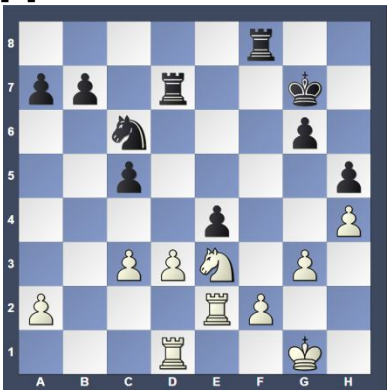


19.Rad1 [19.Bxc7?! Kxc7 (Text cont. p.5)]

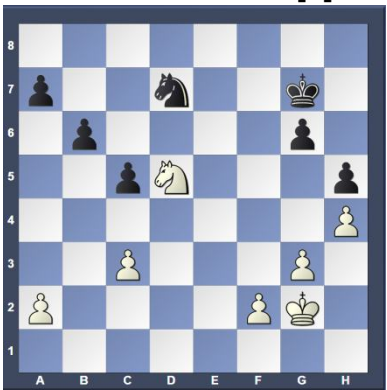
(Cont. from p.4) 20.Nxe5] 19...Bxh6
20.Nxh6+ Kg7 21.Ng4 Nd5 22.Bxd5
Rxd5 [D]



23.Re2 [23.c4 Rd6 24.Nxe5 Nd4]
23...h5 [23...b5 24.Rb1 Rxd3 25.Rxb5
Rxc3 26.Rb7+ Rf7 27.Rxf7+ Kxf7 28.Nxe5+
Nxe5 29.Rxe5] 24.Ne3 Rd7 25.h4 e4?
[D]



[Weakening the position. 25...b5]
26.Red2? [Letting the wind out of his
own sails. 26.dxe4 Rxd1+ 27.Nxd1]
26...exd3? [Throwing away the
advantage. 26...Ne5 27.Kg2 Nf3
(27...exd3?! is no comparison 28.f4 Nf7
29.Rxd3)] 27.Rxd3 Rxd3 28.Rxd3 Rf7
29.Rd5 b6 30.Rd6 Ne5 31.Kg2 Rd7
32.Rxd7+ Nxd7 33.Nd5 [D]



1/2-1/2

Round: 2

Submitted by Charles with his comments
and selected Fritz comments [shown
thusly].

White: Charles Siniari (1145)

Black: Knox Bickford, (1391)

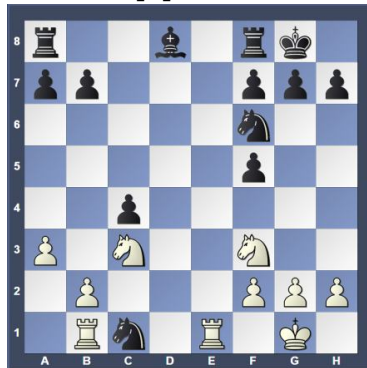
Date: 11/14/2014

[B13: Caro-Kann: Exchange Variation
(Text cont. next col.)

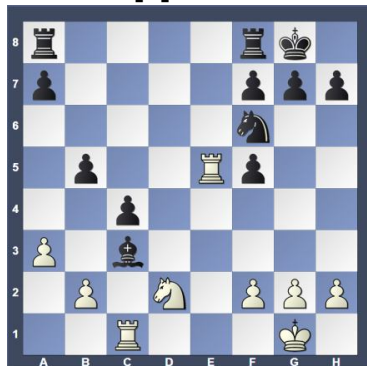
(Cont. from prev. col.) and Panov-
Botvinnik Attack] 1.e4 c6 2.Nf3 d5
3.exd5 cxd5 4.d4 Nc6 5.c4 Nf6
6.Nc3 Bf5 [D]



7.a3 e6 (Charles - Afraid of ...Nb4
and ...Nc2) 8.Bd3 dxc4 [8...Bxd3!?
should be considered 9.Qxd3 dxc4
10.Qxc4 Be7=] 9.Bxf5 exf5 10.O-O
Be7 11.Re1 [11.d5!? Na5 12.Bf4]
11...O-O 12.Ne5? [White has let it
slip away. 12.Qe2 and White could
well hope to play on] 12...Nxd4
13.Nf3? [13.Be3 Ne6 14.Qe2]
13...Nb3 14.Rb1 Nxc1
[14...Qxd1!? seems even better
15.Rxd1 Ne4 16.Be3] 15.Qxd8
[15.Rxc1 Bc5 16.Qxd8 Rxd8]
15...Bxd8 [D]

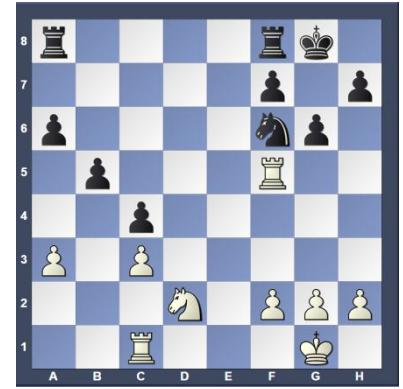


(Charles - A forced move in order to
save the bishop and not allowing
Black to take with a rook.)
[15...Rxd8?! 16.Rxe7 Nd3 17.Rxb7]
16.Rbxc1 Ba5 [16...a6 17.g3]
17.Nd2 [17.Re5 Bxc3 18.Rxc3]
17...b5! 18.Re5 [18.Nxb5 Bxd2]
18...Bxc3 [D]

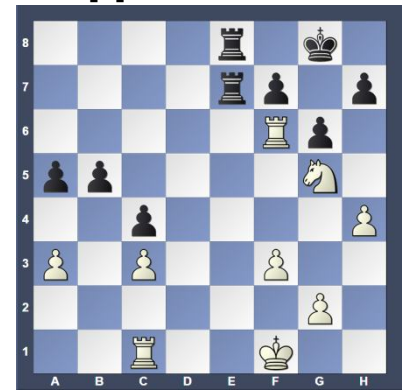


(Charles - White starts to control
(Text cont. next col.)

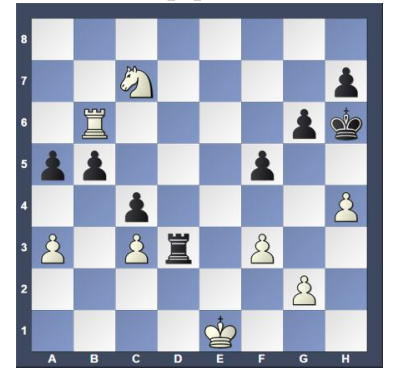
(Cont. from prev. col.) the center
and exploit Black's weak doubled
pawns.) 19.bxc3 a6 20.Rxf5 g6??
[D]



(Charles - The blunder.) [An
unfortunate move that relinquishes
the win. 20...Rad8 21.Nb1 Nd5]
21.Rxf6 Rfe8 22.Nf3 a5 23.h4
Rac8 24.Ng5 Re7 25.Kf1 Rce8
26.f3 [D]

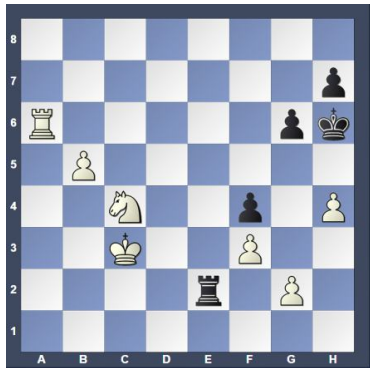


(Charles - To support my knight move
back to the center.) [26.Rb6 h6
27.Nf3 Re2] 26...Kg7 27.Rb6 f6
28.Ne4 f5 29.Nf6 Rd8 30.Re1
Rxe1+ 31.Kxe1 Rd3 32.Ne8+
Kh6 33.Nc7 [D]

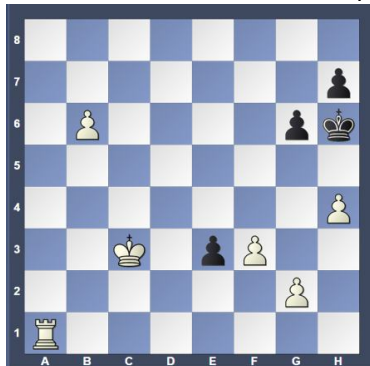


33...b4 34.axb4 a4 35.Nb5 a3
36.Nxa3 Rxc3 37.Ra6 Rc1+
38.Kd2 Ra1 39.b5 Ra2+ 40.Kc3
Re2 41.Nxc4 f4 [D] (p.6) (Charles
- Black is running out of moves.)
42.b6 Re3+ 43.Nxe3 fxe3
44.Ra1 [D] (p.6) (General comment
by Charles concerning the game:
"Overall I thought it was an
interesting game because Knox
(Text cont. p.6)

Position after 41...f4 (From p.5)



Position after 44.Ra1 (From p.5)



(Cont. from p.6) because Knox blundered and was down a piece but up two pawns and he fought hard to protect his pawn majority on one side of the board. Eventually, I created a passed pawn and he resigned.") 1-0

Round: 2

Submitted by Don with his comments and selected Fritz comments [shown thusly].

White: Don Funk (1698)

Black: Fucsko, Janos (1797)

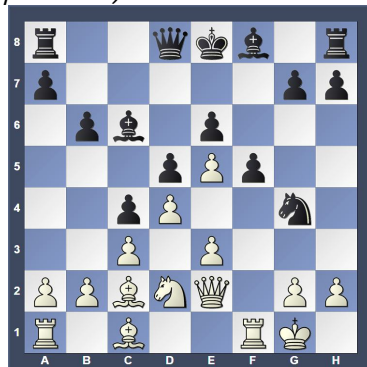
Date: 11/14/2014

[A45: Trompowsky Attack] 1.d4 Nf6 2.e3 b6 3.f4 Bb7 4.Nf3 e6 5.Bd3 c5 6.c3 Nc6 7.0-0 d5 8.Nbd2 [D]

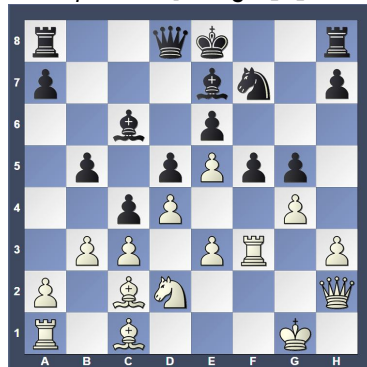


8...Ng4 9.Qe2 f5 10.Ne5 [10.dxc5 Bxc5 11.Nd4 Qc8] 10...Ncx5 11.fxe5 [Worse is 11.dxe5 c4 12.Bb1 Nxe3] 11...c4 [11...Qd7!? must be considered] 12.Bc2 Bc6 [D] (Next col.) 13.Rf3? [Forfeits the advantage. 13.e4!? dxe4 14.Nxe4 Nxh2 15.Kxh2 (15.Qxc4?! Qd7 16.Kxh2 Bb5) 15...fxe4 16.Qxc4] 13...g6 14.b3 b5 15.h3 [15.a4 cxb3 16.axb5 bxc2 17.bxc6 a5] 15...Nh6 16.Qf2 (Text cont. next col.)

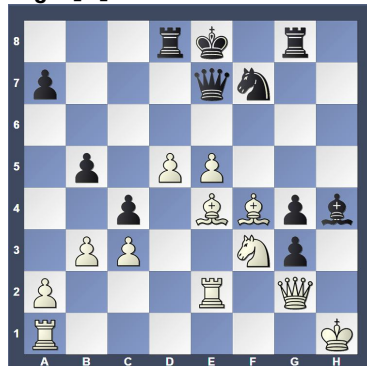
Position after 12...Bc6 (From prev. col.)



(Cont. from prev.col.) [16.a4!? deserves consideration 16...a6 7.Rf1] 16...Be7 17.g3 [17.a4 a6] 17...g5 18.Qh2 Nf7 [18...0-0!? and Black can hope to live] 19.g4 [D]



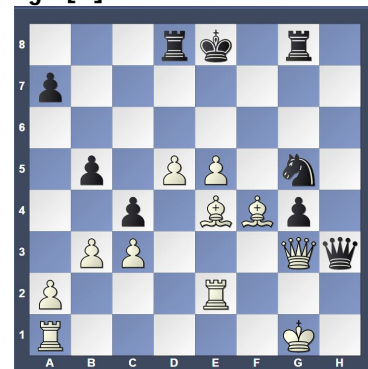
19...h5? [19...Nh6 20.gxf5 exf5 21.Bxf5 Nxf5 22.Rxf5 Rf8] 20.gxf5 g4 21.Rf2 Bh4 22.Re2? [Hands over the advantage to the opponent. 22.fxe6 g3 23.exf7+ Kd7] 22...g3? [Black advances the passed pawn. 22...Ng5 is just about the only chance 23.Kh1 Nxh3=] 23.Qg2 exf5 24.Bxf5 Qg5 25.e4 Rd8 [25...a5 is still a small chance. 26.Nxc4 Qg7 27.exd5 Bb7 28.Nd6+ Nxd6 29.exd6+ Kf8] 26.Nf3 Qe7 27.Bf4 [27.e6 seems even better 27...Nh6 28.Bg6+ Kf8 29.Nxh4 Qxh4 30.exd5 Bxd5 31.e7+ Kg7] 27...Rg8 28.Kh1 dxe4 29.Bxe4 Bd7 30.d5 Bg4 31.hxg4 hxg4 [D]



32.Nxh4 [32.Nd4 makes sure everything is clear 32...Qa3 33.Rf1 Qa6 34.bxc4 Rb8 35.cxb5 Qb6] (Text cont. next col.)

(Cont. from prev. col.)

32...Qxh4+ 33.Kg1 Qh3 34.Qxg3 Ng5 [D]



35.Qxh3 (Don- Better is Bg2.) 35...gxh3? (Don - Better is Nxh3+ and Black should win.) [35...Nxh3+ 36.Kh1 Nxf4] 36.Bxg5 Rxc5+ 37.Kh2 Rd7 38.Rg1 Rh5 39.Bg6+ [D]



(Don - "My move #35 was stupidity, whereas Janos was in real time trouble"). 1-0

Other places to play chess:

The below are for friendly off hand non-rated games (clocks optional). Bring chess set.

Monday evenings about 6:00 to 10:00 PM, "Starbucks", 10 North Main Street, Doylestown

Tuesday mornings 9:30 AM to Noon at the Pennridge Community Senior Center in Silverdale. Located on route 113 near route 152

Wednesday evenings 7:30 to 10:00 PM, "Christ Reformed Church at Indian Creek" located at 171 Church Road (intersection with Cowpath Road), Telford, PA.

Allentown Center City Chess Club

Offer (from Eric C. Johnson): "For any of our events -- If three or more Lansdale players carpool together -- the designated driver plays for free!"

<http://www.freewebs.com/allentowncentercitychessclub>

www.northpennchessclub.org