

~ En Passant ~

Newsletter of the North Penn Chess Club of Lansdale, Summer 2012, Part 2
 Olin Mastin, Editor

North Penn Chess Club
 500 West Main Street
 Lansdale, PA 19446
www.northpennchessclub.org

(215) 699-8418 donfunk@msn.com
Games from the 43rd Susquehanna Valley Open, Bloomsburg, PA

In this issue I want to feature several games played by NPCC members from the 43rd Susquehanna Valley Open which had taken place over the July 20-21 weekend. Some other games will be included as well.

The following game is submitted by Greg Sulat:

Greg wrote:

"Here's a game from Bloomsburg against Robert Brubaker - mid 1400's.

He played a Sicilian and made a few key mistakes - undeveloped his knight. Too many queen moves (and started right back at d8!), and allowed me to push those pawns. I liked the ending - don't trade the Queen!!"

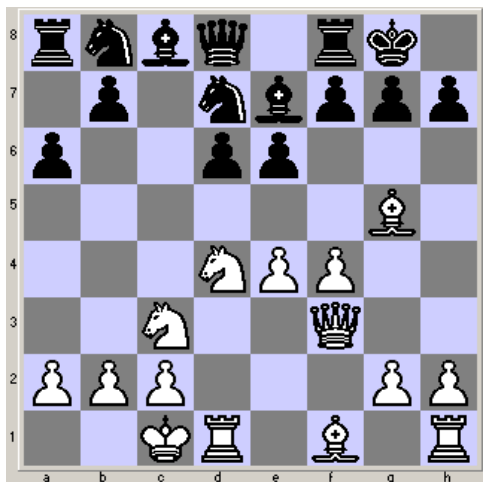
White: Greg Sulat (1255)

Black: Robert Brubaker (1441)

Date: 07/21/2012

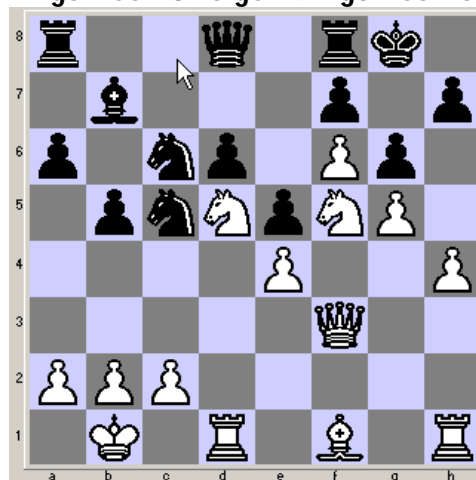
(Comments by Greg except as noted.)

1.e4 c5 2.Nf3 d6 3.d4 cxd4 4.Nxd4 Nf6 5.Nc3 e6 6.Bg5 Be7 7.f4 a6 8.Qf3 O-O 9.O-O-O Nfd7 [D]



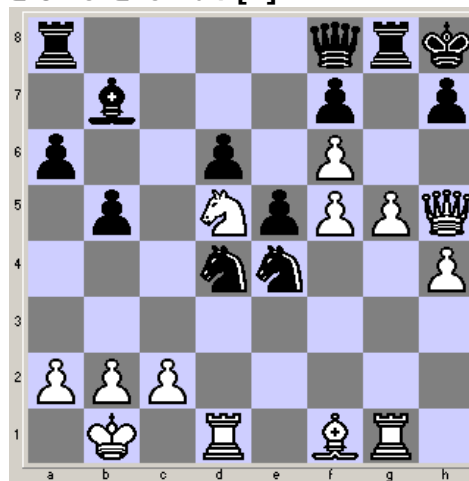
10.Bxe7 Qxe7 11.f5 Qg5+ 12.Kb1 e5

13.Nde2 Qf6 14.Nd5 Qd8 15.g4 b5 16.h4 Bb7 17.g5 Nc6 18.f6 g6 19.Ng3 Nc5 20.Nf5 [D]



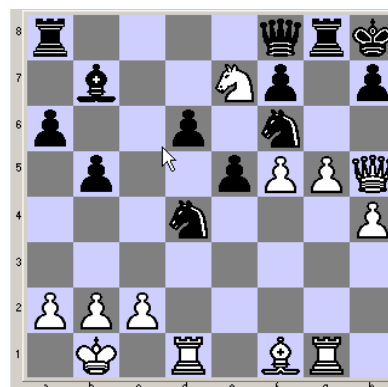
20... gxf5

21.Qh5 Kh8 22.exf5 Ne4 23.Qh6 Rg8 24.Rg1 Qf8 25.Qh5 Nd4 [D]



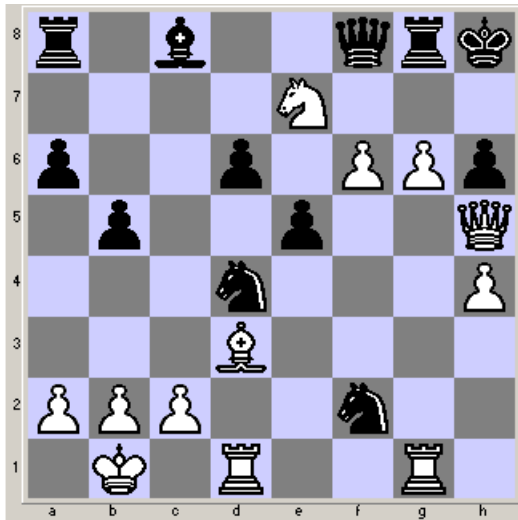
26.Ne7

Bc8? (Crafty analysis engine here gives: 26...Nxf6![D] 27.gxf6, almost forced as



the white queen is attacked. 27...Rxc1! Now black could be winning.)(Olin)

27.Bd3 Nf2 28.g6 fxc6 29.fxc6 h6 [D]



30.g7+

Rxg7 31.Qxh6+ 1-0

The following game is submitted by Don Funk:

Don wrote:

"In my 1st round game at Bloomsburg, he is the strongest unrated player I have seen as I soon found out. John said he used to play, but never played a USCF rated game until now."

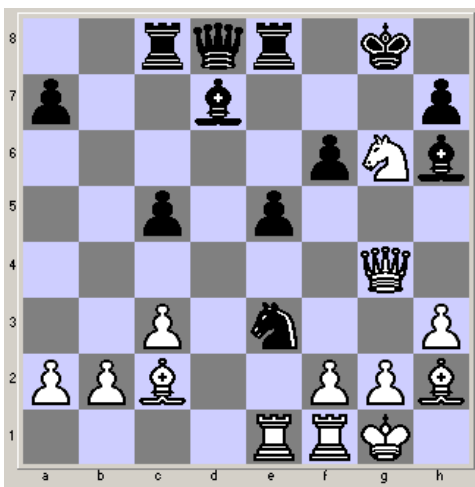
White: John Finnegan (UNR)

Black: Don Funk (1630)

Date: 07/21/2012

(Comments by Don except as noted.)

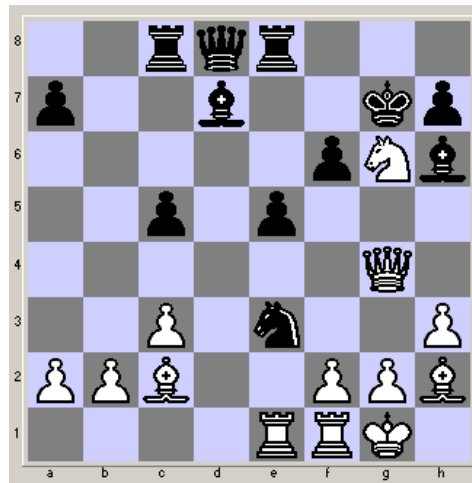
1.d4 d5 2.Nf3 Nf6 3.e3 g6 4.Bd3 Bg7 5.O-O O-O
6.c3 Nbd7 7.Nbd2 Re8 8.e4 dxe4 9.Nxe4 Nxe4
10.Bxe4 Nf6 11.Bc2 c6 12.Bf4 Nd5 13.Bg3 e6
14.Ne5 f6 15.Nd3 Ne7 16.h3 Bd7 17.Qd2 Nf5
18.Bh2 Bh6 19.Qe2 b6 20.Rae1 Rc8 21.Qg4 c5
22.dxc5 bxc5 23.Nf4 e5 24.Nxg6 (That woke me
up!) Ne3 [D]



25.Ne7+

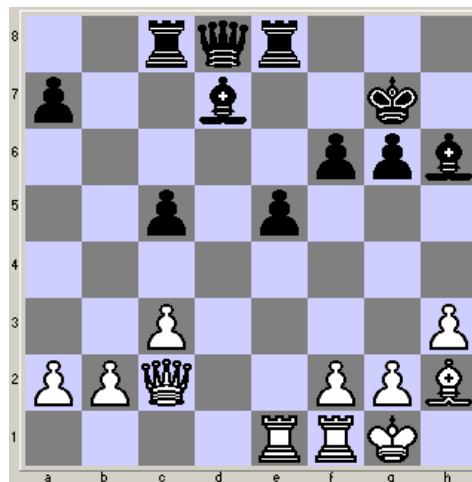
(Better is Qe4. Then Nxc2 26.Qxc2 hxg6
27.Qxg6+ Bg7 nets two pawns for the N.)
(Crafty gives: 25.Qg3 Nxc2 26.Nxe5+ Bg5
27.Rc1 fxe5 28.Rfd1 Nd4 29.cxd4 exd4 30.h4 Re2
31.b3 h6 8.hxg5 Qxg5) (on 25. Qe4, Crafty gives:
25...Bc6! 26.Qd3 Qxd3 27.Bxd3 Nxf1 28.Nh4

28...Nxb2 29.Kxb2 etc... with advantage to
black.) 25... Kh8 26.Ng6+ Kg7 [D]



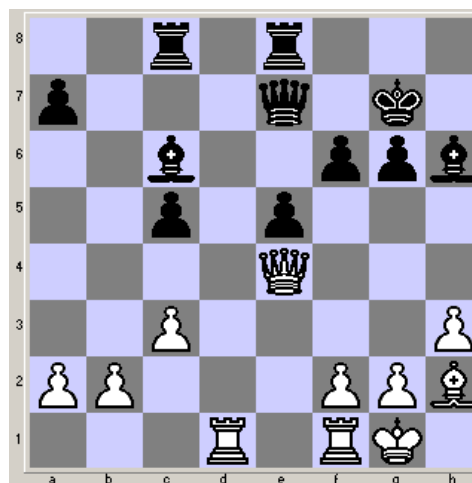
27.Qe4

Nxc2 28.Qxc2 hxg6 [D]



(Black can

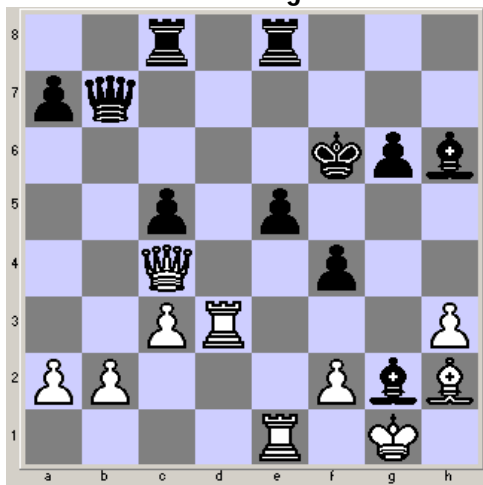
now sigh a breath of relief! That was one
sticky wicket he was in!) 29.Rd1 Qe7 30.Qe4
Bc6 [D]



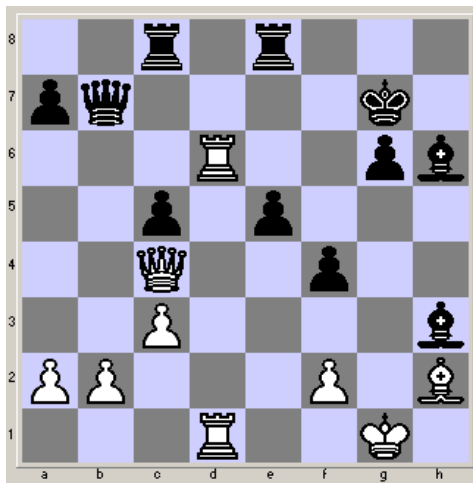
31.Qc4

Red8 32.Qg4 f5 33.Qe2 Re8 34.Rfe1 Kf6
35.Qa6 f4 36.Rd3 Qb7 37.Qc4 Bxg2[D]
38.Rd6+ Kg7 39.Red1 Bxb3 [D] 40.Qd5 Qxd5
41.R1xd5 Kf7 42.b4 cxb4 43.cxb4 Rc1+
44.Rd1 Rxd1+ 45.Rxd1 Ra8
46.a3 a5 47.bxa5 Bf8 48.a4 Bc5 49.Rc1 Rc8
[D]

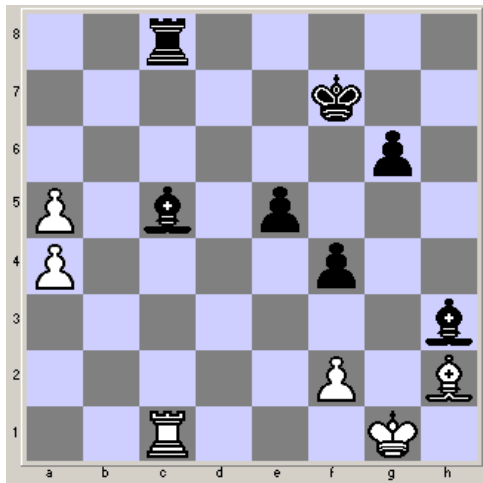
Position after 37...Bxg2:



Position after 39...Bxh3:



Position after 49...Rc8:



50.Kh1 Bxf2

51.Rxc8 Bxc8 O-1

The following game is submitted by Joe Kennedy:

Joe wrote:

"I submit this game because I was astounded at how many moves a person can make when in time trouble.

*Sam was essentially out of time at move 30. His position at the time was not as good as

mine. He made better moves in time trouble than he did in regular time. He made roughly 26 moves in two minutes.

The person not in time trouble continually looks at the clock waiting for the flag to fall instead of concentrating on the game.

Bill Champion tells me that Sam beat him last year while in time trouble using the five second delay on his clock.

Sam and I ended in a draw."

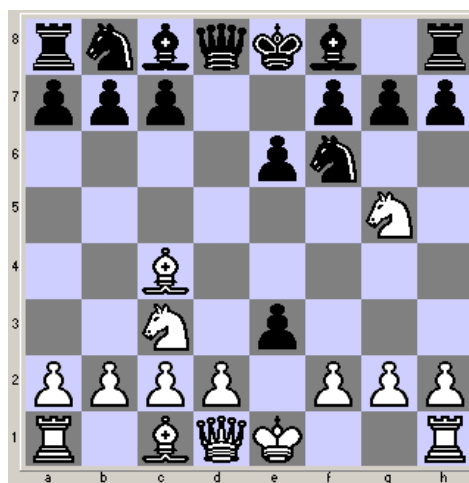
White: Sam Lamonto (1517)

Black: Joe Kennedy (1646)

Date: 07/22/2012

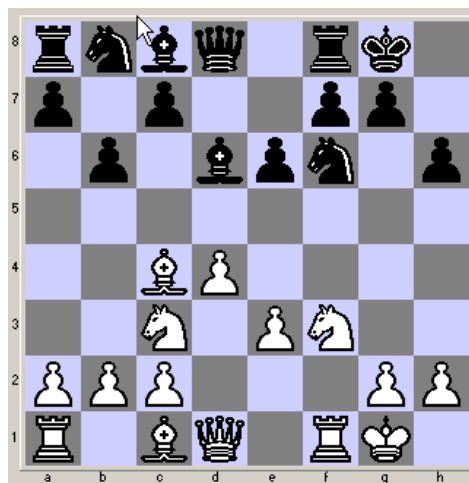
(Selected brief comments extracted from Joe's Fritz program, except as noted.)

1.Nf3 d5 2.e4 dxex4 3.Ng5 Nf6 4.Bc4 e6 5.Nc3 e3 [D]



6.fxe3 h6

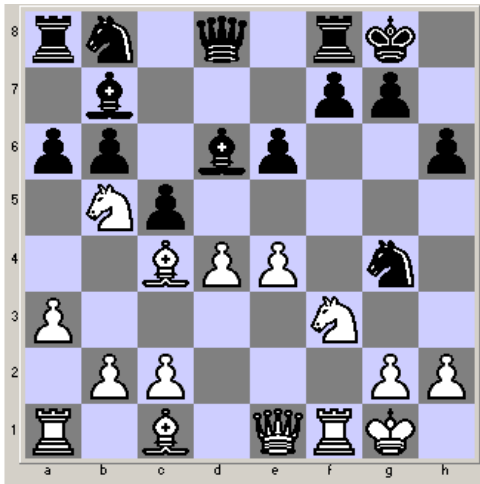
7.Nf3 Bd6 8.O-O O-O 9.d4 b6? [D]



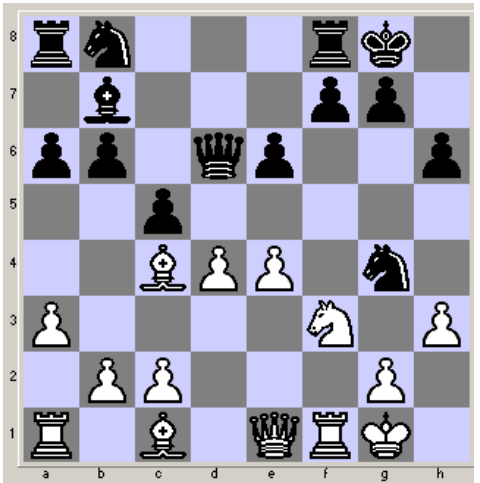
(Fritz here

suggests 9...Nc6 10.a3=)10.a3 Bb7 11.Qe1 c5 12.Nb5 Ng4 13.e4 a6? [D] (Gives opponent counter play. Fritz gives 13...cxd4 14.e5 Be7) 14.Nxd6 Qxd6 15.h3? [D] (Fritz: Ruins a clearly superior position. 15.Qh4! Bxe4 16.Qxg4 Bxf3 17.Rxf3 Qxd4+ 18.Qxd4 cxd4 19.Rg3 with edge for white)15...Nh2

Position after 13...a6:

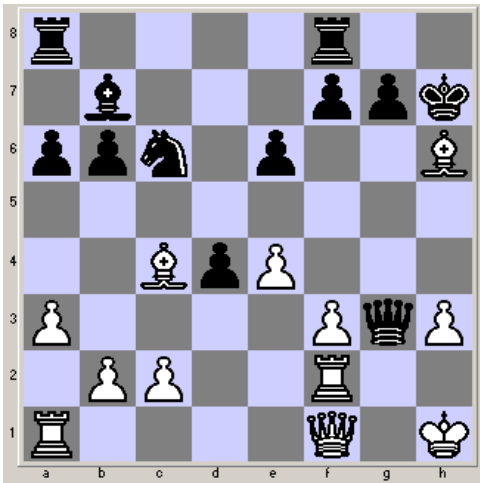


Position after 15...h3?:



16.Rf2?

(Fritz: Nxh2 Qxd4+) Nxf3+ 17.gxf3 Qg3+
18.Kh1 cxd4 19.Qf1 Nc6 20.Bxh6 Kh7? [D]



(Fritz:

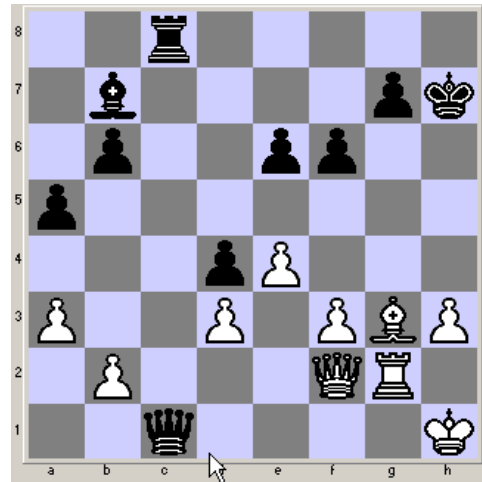
20...Qh4 21.Bd2 with edge for black.) 21.Bd2
Ne5 22.Bd3 Rac8 23.Rc1 Nxd3 (Fritz: 23...f5!?)
24.Qg1 Qh4) 24.cxd3 Rxc1 25.Bxc1 Rc8 26.Rg2
Qc7 27.Bg5 f6 28.Bh4 Qf4 29.Qf2 a5 30.Bg3
Qc1+ [D] (*Sam was essentially out of time at
his clock at this point.) 31.Rg1 Qh6 32.h4 e5 33.f4
Ba6 [D] 31.Rg1 Qh6 32.h4 e5 33.f4 Ba6 [D]
34.fxe5 Bxd3? 35.Qf5+! Qg6 36.Qxc8 Bxe4+
37.Kh2 Bf5 38.Qc1 Qg4 39.Qf1 fxe5 40.Be1
Qe4 41.Qg2 Qxg2+ 42.Rxg2 e4 43.Bd2 e3
44.Bc1 Bd3 45.Rg3 e2 46.Bd2 Bc4 47.Kg2 d3

48.Kf2 g6 49.Bc3 Kh6 50.Ke3 b5 51.b3 Bxb3
52.Kxd3 Bc4+ 53.Ke3 b4 54.axb4 a4 55.Kd2 a3
56.Ba1 Bb5 57.Rxa3 [D]

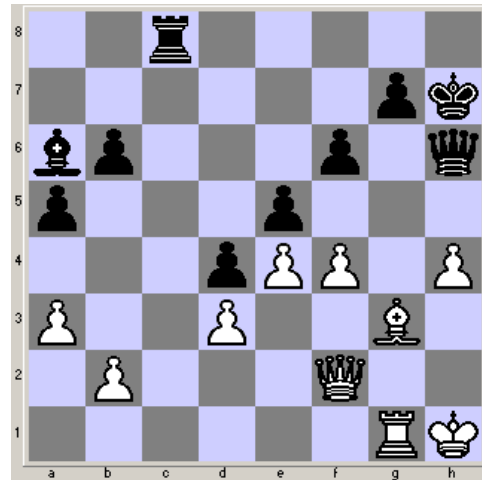
Position after 20...Kh7?:



Position after 30...Qc1:

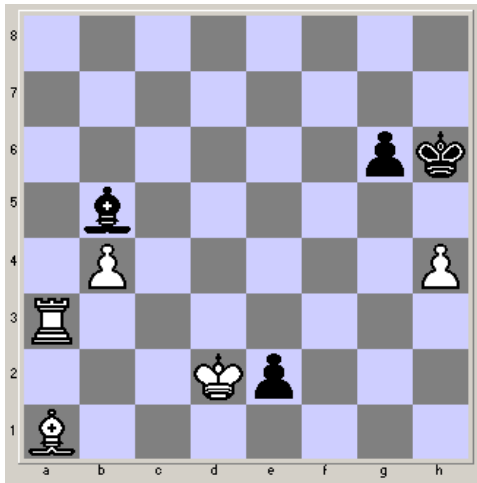


Position after 33...Ba6:



(Final position on page 5) 1/2-1/2 (Olin: I take
it that Sam was almost out of time to attempt to
clinch the win as he clearly had the advantage.
Joe offered a draw which, I assume, Sam
happily accepted with nearly zero time left. Joe
had plenty of time left on his clock; however, I
also assume that Joe was happy with a draw,
considering the position.)

Position after 57.Rxa3 (Final position)



For anyone that is interested, contact Joe, and he can send the file with the full Fritz analysis. josephkennedy@verizon.net

The following game played back in 2000 is submitted by Don Funk:

White: Joe Weber 2200
Black: Don Funk 1708
NPCC Fall Open, Round 1
9/30/2000

(Comments by Don.)

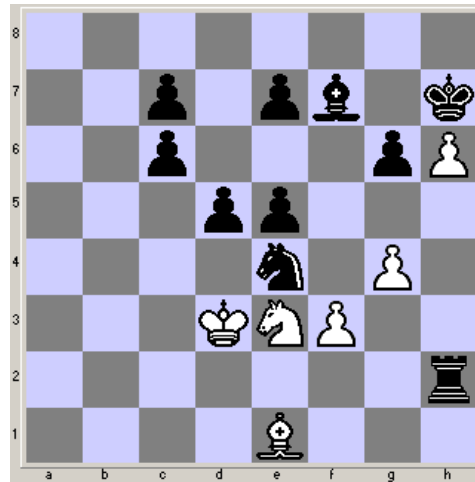
1.e4 Nf6 2.e5 Nd5 3.d4 d6 4.Nf3 Nc6 5.c4 Nb6
 6.e6 fe 7.Ng5 e5 8.Bd3 Nxd4 9.Bxh7 Rxh7
 10.Nxh7 Bf5 11.Nxf8 Kxf8 12.Na3 Nxc4
 13.Nxc4 Nc2+ 14.Kf1 Nxa1 15.Ne3 Qd7 16.Qf3
 g6 17.g4 Qc6 [D]



18.Qxc6

(Better for white is 18.Kg2 Qxf3+ 19.Kxf3 Bd3 20.Bd2 Nc2 21.Rc1 Nxe3 22.Kxe3 Bb5 23.Rxc7 Bc6) **18.... Bd3+ 19.Ke1?** [Better for white is 19.Kg2 bxc6 20.Rd1 e4 21.Rd2 a5 22.b3 Rb8 23.Bb2 Nxb3 24.axb3 Rxb3, though black has four pawns for a piece and probably should still win. Alternatively in the line above, if 23.Rb2 23.Rb23.... a4 24.ba Rxb2 25.Bxb2 Nc2 26.Nxc2 Bxc2 27.a5 Bd3 and black should be able to win the bishops-of-opposite-colors endgame.] **19....c6**

20.Kd2 Bb1! (Black is two pawns ahead now.)
21.b4 Bxa2 22.Ba3 Nb3+ 23.Kc3 Nd4 24.h4 Bf7
 (Black is now ahead three pawns.) **25.h5 Kg7**
26.h6+ Kh7 27.Bb2 a5 28.ba Rxa5 29.Kd3 Ne6
30.Bc3 Nc5+ 31.Ke2 Ra4 32.Rh2 Ne4 33.Be1
Ra2+ 34.Kd3 d5 35.f3?? (A blunder, but it's hopeless anyway.) **35.... Nc5+ 36.Kc3 Rxh2[D]**
0-1



0-1

Son Eric had won over Joe in the final game of a tournament at the club the week before. Joe, who always had a great sense of humor, made the comment: "I've been double Funked."

The following game is submitted by Eric Funk:

White: Eric Funk 2034
Black: Rodion Rubenchick 2344
43rd Susquehanna Valley Open, Bloomsburg ,
Round 4, Board 2, July 21, 2012

1.c4 e6 2.Nc3 Nf6 3.e4 d5 4.e5 d4 5.exf6 dxc3
 6.bc Qxf6 7.d4 e5 8.Qe2 Nc6 9.f4 e4 10.Qxe4+
 Be7 11.Bd3 g6 12.Ne2 Bf5 13.Qf3 0-0 14.0-0
 Bxd3 15.Qxd3 Na5 16.f5 Qa6 17.Bh6 Rfe8 18.f6
 Bxf6 19.Qf3 Re7 20.Nf4 Bg7 21.Bxg7
 (Alternatively, 21.Bg5 Rd7 22.Nd5 f5 isn't that bad for black.) **21.... Kxg7 22.Nd5 Rd7 23.Nf6**
Re7 [D]



(After the game I felt I missed a win. This was my best chance. 24.Qh3 threatens to capture the h7 pawn with a check while depriving black's rook of its d7-defensive square. For example, after 24... h6 25.Nd5 black must lose material. Instead I chose to build up pressure slowly by protecting my pawns and then doubling rooks on the f-file.) **24.c5 Rf8 25.Rf2 Nc4 26.Raf1 Qc6 27.Qf4** (The endgame after 27.Qxc6 bxc6 looks dead even.) **27... Ne3 [D]**



(We were

both short on time and I almost reflexively played 28.Re1?? which would have lost on the spot to 28... Nd5 (the Qf4, Re1, and Nf6 are all under attack). This was my last chance to play for a win with 28.Qh4 (threatening mate on h7). For example, after 28... h6 29.Nh5+ gxh5 30.Qxe7 Nxf1 31.Rxf1, the threat of 32.Rf3 and 33.Rg3+ looks difficult for black to meet. Instead of 28.Qh4, I forced a draw by repetition.) **28.d5 Qxc5 29.Nh5+ gxh5 30.Qf6+ Kg8 31.Qg5+ Kh8 32.Qf6+ ½ - ½.**

Other places to play chess:

All of the below are for friendly off hand non-rated games (clocks optional). Bring chess set.

Wednesday evenings 7:30 to 10:00 PM at the Covenant Presbyterian PCA Church located off Sumneytown Pike (Route 63) about a mile west of Harleysville. Turn left if travelling west onto Covenant Lane. For more info, you may contact Jonathan English at startreck@gmail.com.

Tuesday mornings 9:30 AM to Noon at the Pennridge Community Senior Center in Silverdale. Located on route 113 near route 152 across the street from the John Deere dealer. <http://www.pennridgecenter.org>.

Monday evenings about 6:00 to 10:00 PM, "House of Coffee", (formally Saxby's) 22 North Main Street, Doylestown.

The following game is submitted by Greg Sulat:

White: Jonathan Rumpf 429

Black: Greg Sulat 1245

NPCC 2012 August Quads

8/10/2012

Greg wrote:

"Here is a game between Jonathan and myself. Thought you might want it for the Newsletter Jonathan played a pretty good game. Not sure about the knight move taking f7 - forces the king move, no castling, and opens up the pawns a bit. The Bishop check was a bit unexpected. Thought I was winning a piece The knight check that cost him a rook was a lot more luck than skill. I saw it earlier but was more focused on avoiding a back rank mate."

1.e4 e6 2.d4 d5 3.Nf3 dxe4 4.Ne5 Nf6 5.Nc3 Bb4 6.Bd2 Nbd7 7.Nxf7 Kxf7 8.g3 c5 9.Bg2 cxd4 10.Ne2 Bxd2+ 11.Qxd2 e3 12.fxe3 dxe3 13.Qxe3 Rf8 14.Qf3 Rb8 15.Qf4 e5 16.Qd2 Nc5 17.O-O-O Be6 18.Qb4 Qb6 19.Qa3 Ng4 0.Rhf1+ Kg8 21.Rf3 Nxh2 22.Rc3 Rbc8 23.Ng1 Na6 24.Rxc8 Rxc8 25.Nh3 Ng4 26.Re1 Nf2 27.Rxe5 Bxh3 28.Bd5+ Kh8 29.Qe7 Nd3+ 30.Kd2 Nxe5 31.Qxe5 Rd8 32.c4 Bg2 33.Qe7 Bxd5 34.cxd5 Rxd5+ 35.Kc1 Qc5+ 0-1

Allentown Center City Chess Club

Offer (from Eric C. Johnson): "For any of our events -- if three or more Lansdale players carpool together -- the driver plays for

There will be Simul at the Historical Society Park, Sat., Sept. 1, 10 a.m. to 2 p.m. in Doylestown. Expert Jose Fernandez vs. any and all challengers.

Tournament Schedule

DATE	RD.	EVENT	COMMENTS
8/31/12		CLOSED	Closed for Labor Day
9/7/12	1 of 5 *	Membership	Members pay annual dues.
9/14/12	2 of 5 *	Drive	No separate entry fee for tournament.
9/21/12	3 of 5 *	5 Round Swiss	
9/28/12	4 of 5 *	40/90;SD/45	
10/5/12	5 of 5 *	EF: \$36	

Winner is NPCC club champion!

Free yearly NPCC membership to winner, free membership to top under 1600!

More to be printed. Keep checking in. Thanks. You may also check the website: www.northpennchessclub.org

*** NOTE: All rd's. begin at 8 PM. Arrive 7:45 1st Round!**