

# ~ En Passant ~

## Newsletter of the North Penn Chess Club of Lansdale, Summer 2012, Part 1

North Penn Chess Club  
500 West Main Street  
Lansdale, PA 19446  
[www.northpennchessclub.org](http://www.northpennchessclub.org)

(215) 699-8418

[donfunk@msn.com](mailto:donfunk@msn.com)

Olin Mastin, Editor

### Dan Heisman Seminar, June 22, 2012

By Olin Mastin

I suppose one could say that the summer highlight at NPCC would be the Dan Heisman lecture. Below is a synopsis of most of the points he covered. I will only briefly mention them without any detailed descriptions. You would have to get his books or videos for that.

He described the various aspects of center pawn structures as "Open", "Closed", "Fixed", and "Locked". He described "Break Moves" when to play and not play them. Generally, a break move by a pawn can be employed in open positions to open lines, but not in closed positions.

He mentioned "Pointer Rules". That is to direct an attack in the direction of the pawn chain. You shouldn't attack where you do not have the advantage, but do attack when you have the advantage. Of course you have to determine when and if you have the advantage or not.

Move pawns up on the pawn majority side always trying to protect a pawn with a pawn.

In a locked center it is okay to move a knight twice to open a file for a break. If your opponent wastes time, then you want to open up the game but always determine if a move is safe when planning strategy.

Dan recommended two of his books as follow up: "Improving Chess Thinking" and "A Guide to Chess Improvement".

Dan's website is:

[http://www.danheisman.home.comcast.net/~danheisman/Main\\_Chess/chess.htm](http://www.danheisman.home.comcast.net/~danheisman/Main_Chess/chess.htm)

The home of the Dan Heisman Chess Support Fund is:

[http://www.danheisman.home.comcast.net/~danheisman/Main\\_Chess/donations.htm](http://www.danheisman.home.comcast.net/~danheisman/Main_Chess/donations.htm).

You can catch Dan's chess lectures in the *Internet Chess Club* ([www.chessclub.com](http://www.chessclub.com)) and he has recently began posting on [www.chess.com](http://www.chess.com)

### The following game is from the 2012 NPCC Spring Quads

Submitted by Eric with his comments

**White: Doug Kern (1770)**

**Black: Eric Funk (2029)**

**Date: 04/20/2012**

**1. e4 Nc6 2.Nf3 d6 3.d4 Nf6 4.Nc3 Bg4 5.Be2 a6 6.h3 Bh5** More "standard" here was 6... Bxf3. With the text move, I'm inviting my opponent to try to push me off the board. **7. g4 Bg6 8.d5 Ne5 9.Nd2 h6 10.f4 Ned7 11.f5 Bh7 12. h4 Bg8 [D]**



Still according to plan (!). I'm looking to counterattack his (hopefully) overextended pawn center, while he is looking for a breakthrough on the king's side. **13. Nf1 Ne5 14.Bf4 e6 15.Rg1 Qe7 16.g5 hg 17.hg Nfd7 18.Qd2 ef** (Doug didn't see that he was dropping a pawn) (not 19.ef?? Nf3+), but I still like his position. White has more than enough activity to compensate for the pawn. **19.0-0-0 fe 20.Ng3 g6 21.Ngxe4 Bg7 22.Nf2 0-0-0 23.Ng4 Kb8 24.Rde1 f5 25.gf Nxf6 26.Nxe5** Quietly pinning with 26.Bg5 was much stronger. The more we looked at this alternative in the postmortem the more I was convinced it puts white on top. **26... dxe5 27. Bf3 Nh5 [D]**

## Position after 27...Nh5

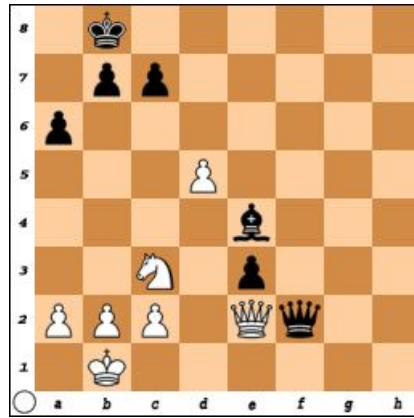


Despite the extra pawn for black, chances are probably about equal. One mistake by either player could decide things quickly. For example, on 28.Bh2?? Bh6, white drops a queen. Also bad for white is 28.Rxg6 Nxf4 29.Qxf4 exf4 30.Rxe7 Bxc3 31.bxc3 Bxd5, when black keeps the extra pawn with a better endgame. Finally, after 28.Bg5 Bf6 29.Bxf6 Qxf6 30.Be4 Nf4 white fails to regain the pawn or improve his position. Either 28.Be3 or the move Doug played seems best. **28. Bxh5 Rxh5** The most active continuation. 28... gxh5 would have allowed white a pleasant choice between 29.Qe2 and 29.Qh2, among others. **29. Rxg6** White regains his pawn but allows some unwelcome complications. **29... Qf7 30.Reg1 Bh8 31.Be3 e4** Opening the h8-a1 diagonal and at the same time taking aim at the d5-pawn. **32. Bd4 Rh2 [D]**



Doug was getting short on time and he couldn't have been happy to see this move. It's not really a sacrifice as white won't be able to keep the exchange and guard his back rank and g6-Rook all at the same time. **33. Qxh2 Bxd4 34.Qg2 Bh7 35.Rg7 Qf4+ 36.Kb1 Rxg7 37.Qxg7 Rg8 38.Qd4 Rxg1+ 39.Qxg1 e3 40.Qe1 Qf2 41.Qe2 Be4 [D]**

## Position after 41...Be4



Winning.

42... Bf3 can't be stopped. (43.Qh5 doesn't help white neither as no perpetual check is possible.) **0 - 1** in 56.

## The following game is from the 2012 NPCC June Quads

Submitted by Eric with his comments

**White: Doug Kern (1772)**

**Black: Eric Funk (2033)**

**Date: 06/08/2012**

**1. e4 Nc6 2.Nf3 e5 3.d4 ed 4.Nxd4 Qh4 [D]**



If I haven't put my opponent on unfamiliar and uncomfortable ground by move 5, then I feel I haven't done my job. The text move dubious, unclear, or approximately equal – depending on which source you use! **5. Nc3** The immediate 5.Nb5 is the main alternative. **5...Bb4 6.Be2 Qxe4 7.Nb5 Bxc3+ 8.bxc3 Kd8** Still "book"(!) **9.0-0 a6 10.Bf3 Qg6 11.Nd4 Nge7 12.Be3 d6 13.Bh5 Qf6 14.Qd2 h6 15.Bf3 Ne5 16.Be2 Bg4 17.f3 Bd7 18.c4 Re8**

Intending to reshuffle pieces and relocate the king to f8. White has a lot of pressure, but black's position seems solid enough. **19. Rfd1 Nc8 20.Nb3 Ke7** Not timed correctly. Doug's suggestion of 20... Qe7 looks better. **21. Bd4** Very strong. White threatens to win a piece with either 22.f4 (since the Ne5 is pinned)

or 22.Bxe5 (taking advantage of the vulnerable Bd7). 21... Qe6 22.Nc5 Tricky but not best. The straightforward 22.f4 was still strong and according to Doug, 22.Re1 looks even better. 22... dxc5 23.Bxe5 Qxe5 24.Qxd7+ Kf8 25.Bd3 Nb6 26.Qg4 Rad8 [D]



Black finally (!)

has a comfortable position to go with the pawn. 27. Re1 Qc3 28.Rxe8+ Rxe8 29.Rf1 Qd4+ 30.Qxd4 cxd4 31.Rb1 Rb8 32.Rb4 Nd7 33.c5 Nxc5 34.Rxd4 Ne6 I rejected 34... Nxd3 35.cxd3 as too "drawish". 35. Rb4 b5 36.c4 No better was 36.a4 c5 37.Rb1 Nc7: either way black will eventually create a passed pawn. 36... c5 37.Rb2 b4 38.Kf2 Nd4 39.Ke3 Re8+ 40.Kd2 a5 41.Rb1 a4 42.Re1 [D]



To trade rooks

immediately or not? Yes! I have a winning breakthrough. 42... Rxe1 43.Kxe1 a3 44.Kd1 b3 45.Bb1 Nc6 46.ab Nb4 47.Kc1 And now all I have to do is play the move I saw before I traded rooks: 47... a2 wins the bishop and the game. But for some reason I couldn't resist the urge to play a "cute" move and so without properly considering the consequences I played: 47... Ke7?? 48. Be4 Hello! How I missed this move I will never know. Even more discouraging for me was to discover after the game that it was still winnable at this point – if I had played correctly. I was no longer in a proper frame of mind and so after 47... Kd6 48.f4 we played on a dozen or so harmless moves, mostly trading king's-side pawns, before I conceded the draw. ½ - ½

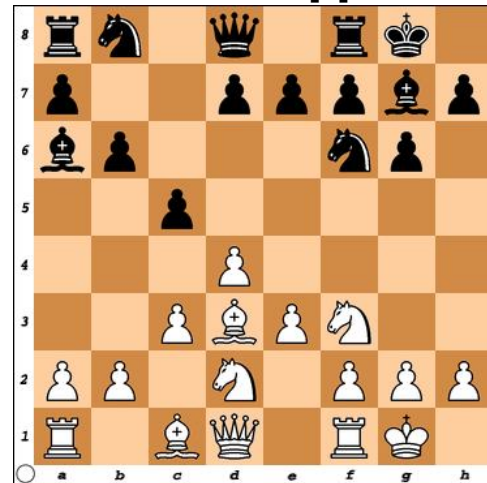
Doug could have easily won both of these very complicated games. I give him credit for playing this last one out and coming up with a "save." He is a tough opponent and I look forward to continuing our rivalry.

### The following game is from the 2012 NPCC Summer Quads

Submitted by Bill Campion with selected comments from his Fritz analysis.

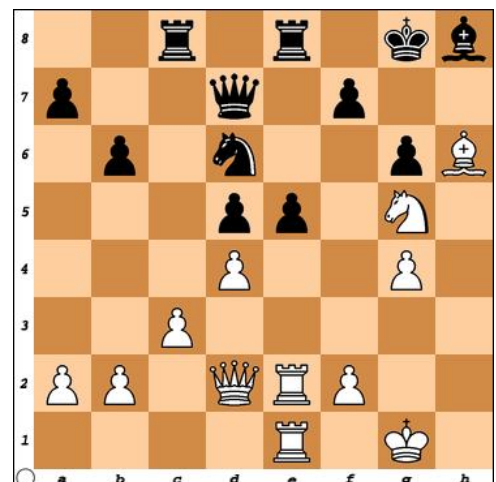
Campion, W. (1613)  
Baluk, Dennis (1808)  
Date: 07/15/2012

1. d4 g6 2.Nf3 Bg7 3.e3 c5 4.c3 b6 5.Bd3 Nf6 6.Nbd2 0-0 7.0-0 Ba6 [D]

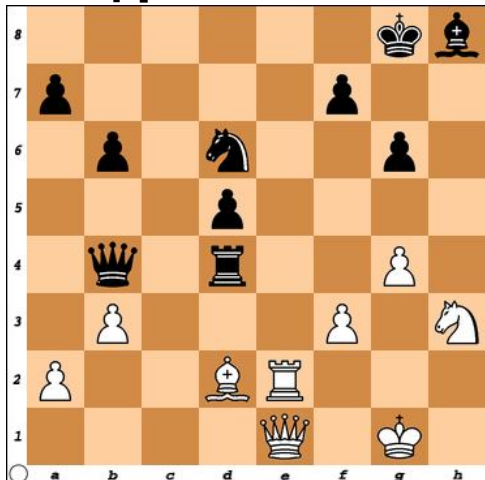


Black threatens to win material: Ba6xd3

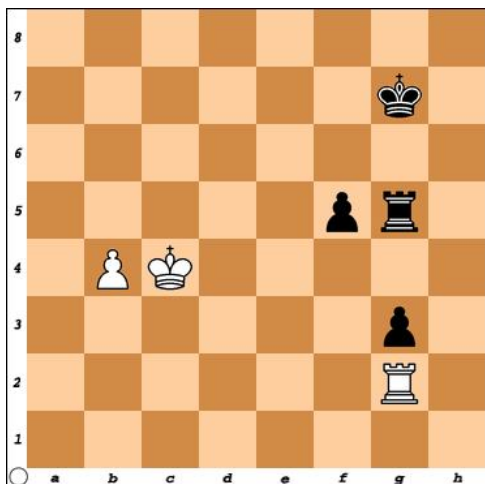
8. Ne4 Bxd3 [8...Nxe4!? must be considered 9.Bxe4 d5] 9.Nxf6+ Bxf6 10.Qxd3 cxd4 11.exd4 Bg7 12.Re1 d5 13.Bf4 Nc6 Black has a cramped position 14.Re2 e6 15.Rae1 Rc8 16.Qd2 Re8 17.Bg5 Qd7 18.Bh6 Bh8 19.h4 Ne7 20.h5 Nf5 21.hxg6 hxg6 22.g4 White threatens to win material: g4xf5. 22...Nd6 23.Ng5, [23.Ne5!? Deserves consideration 23...Qe7 24.Kg2] 23...e5 [D]



24.f3? Secures e4. 24...exd4 25.cxd4 Rxe2 26.Rxe2 Rc4? Black lets it slip away [26...Nb5 27.Re1] 27.Nh3? [27.Qf4, Nb7], 27...Rxd4 28.Qe1? [28.Qg5 Rd1+ 29.Kg2 Qc8=] 28...Qa4 Black threatens to win material: Qa4xa2 [28...Rc4!] 29.b3 White threatens to win material: b3xa4 29...Qb4? Ruins a very nice position [29...Qc6 and Black can hope to live] 30.Bd2 [D]



30...Qb5 31.Bc3? with this move White loses his initiative 31...Rd3? there were better ways to keep up the pressure 32.Bxh8 Kxh8 33.Ng5 d4 34. Qh4 Kg7 35.Qh2 Qxg5 36.Qxd6 Qf6 37.Qh2 Qxf3 38.Qe5+ Qf6 39.Qe4 Rd1+ 40.Kg2 Qf1+ 41.Kg3 Qg1+ 42.Kf4 Qf1+ 43.Kg3 Qf6 44.Kg2 Qg5 45.Kf3 d3 46.Rh2 d2 47.Qd4+ Qf6+ 48.Qxf6+ Kxf6 49.Rf2 Kg7 50.Ke3 Rg1 51.Rxd2 Rxg4 52.Rd7 a5 53.Rb7 Rb4 54.Kd3 a4 55.Kc3 axb3 56.axb3 Rb5 57.b4 g5 58.Kc4 Rf5 59.Rxb6 g4 60.Ra6 g3 61.Ra2 Rg5 62.Rg2 f5 [D]



63.b5? a weak move, ruining a winning position 63...f4 64.b6 Kh6 65.Kd4?? The pressure is too much; White crumbles 65...f3 66.b7 fxg2 67.b8Q g1Q+, 0-1

For anyone that is interested, contact Bill, and he can send the file with the full Fritz analysis. [bcampion327@yahoo.com](mailto:bcampion327@yahoo.com)

## The following game is from the 2012 NPCC Spring Swiss

Submitted by Bill with selected comments from his Fritz analysis. (This game is extracted from an email from Greg Sulat to Bill)

**Campion, W.**

**Murphy, George**

**Date: 03/30/2012**

Greg wrote:

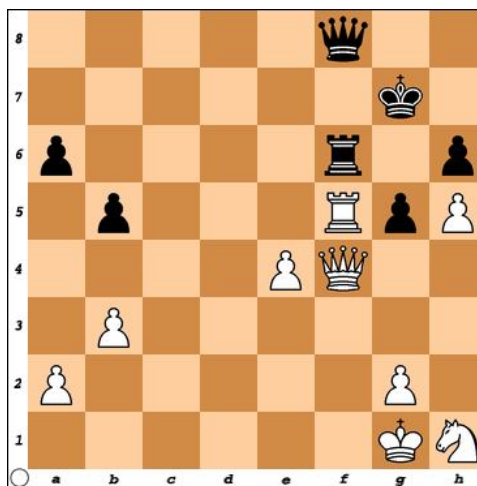
Good Morning Bill,

I know you run your games thru Fritz but was wondering about taking the e6 pawn when he moved his Queen back to the eighth rank. Rook takes, Rook takes and then move your queen to the b file for check. If George moves the rook to c1 for check you can move to a2 and you've picked up a pawn

Just curious. Thanks.

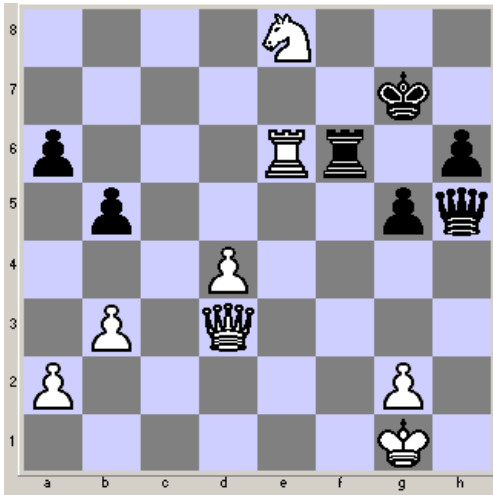
Bill replied: Both yourself and "Fritz" noted; I could have won a pawn after 48. ...Qf8. see comment after game.

1.d4 d5 2.Nf3 Nf6 3.Bg5 e6 4.Nbd2 Be7 5.e3 c5 6.c3 Nc6 7.Bb5 Bd7 8.0-0 a6 9.Bd3 b5 10.Re1 cxd4 11.exd4 Rc8 12.Nf1 h6 Black threatens to win material: h6xg5. 13.Bf4 Na5 14.Ne5 Nc4 15.Nxd7 Qxd7 White has the pair of bishops. 16.Re2 Bd6 17.Bxd6 Qxd6 18.Qe1 0-0 19.Rc1 Ng4 20.b3 Nb6 21.h3 Nf6 22.Re3 Nbd7 23.Qd2 Nh5 24.Rce1 Nf4 25.Bb1 Rfe8 26.Rg3 Nf6 27.Re5 Ng6 28.Bxg6 fxg6 29.Rxg6 Kh7 30.Rg3 Ne4 31.Qd3 g6 32.Re3 Rxc3 33.Qe2 Rxe3 34.Qxe3 Rf8 35.f3 Ng5 36.h4 Ne4 37.fxe4 dxe4 38.Qxe4 Rf6 39.h5 Kg7 40.Ng3 g5 41.Nh1 Qf8 [D]



42.Qd3 (42.Rxe6 might be the shorter path.) 42...Qe8 43.Ng3 Rf4 44.Re4 Rf6 45.Re3 Rf4 46.Ne4 Qf7 47.Nd6 Qxh5 48.Rxe6 Rf6 49.Ne8+ [D] 1-0

**Position after 49. Ne8+ (Final position)**



Final comment by Bill:

I had George under some time pressure and I did not like the check on square/f1. I was playing to hold the potential check on square/g6 and at the same time protect square/f1. I knew all I had to do was simplify (trade Q & R) so my biggest problem was the possibility of making a mistake.

For anyone that is interested, contact Bill, and he can send the file with the full Fritz analysis. [bcampion327@yahoo.com](mailto:bcampion327@yahoo.com)

**The following game is from the 2011 NPCC Swiss/Quad (Double Round Robin)**

Submitted by Doug without comments.

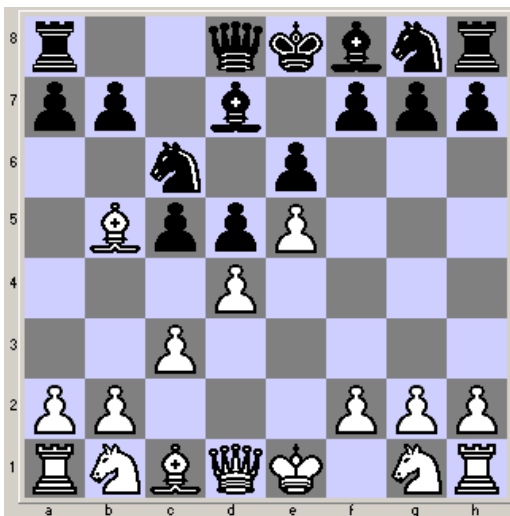
Date: 12/9/2011

White: Bob Kampia (1794)

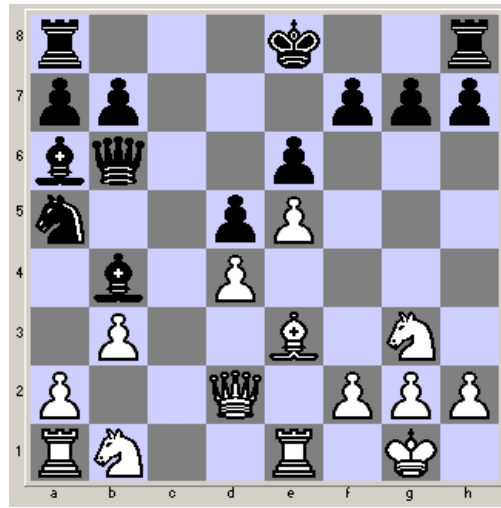
Black: Doug Kern (1636)

French Defense

1.e4 e6 2.d4 d5 3.e5 c5 4.c3 Nc6 5.Bb5 Bd7 [D]

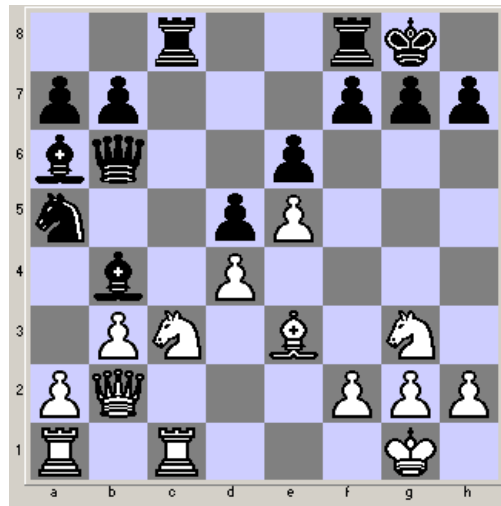


6.Bxc6 Bxc6 7.Ne2 cxd4 8.cxd4 Ne7 9.Ng3 Qb6  
10.O-O Bb5 11.Re1 Nc6 12.Be3 Ba6 13.Qd2 Na5  
14.b3 Bb4 [D]



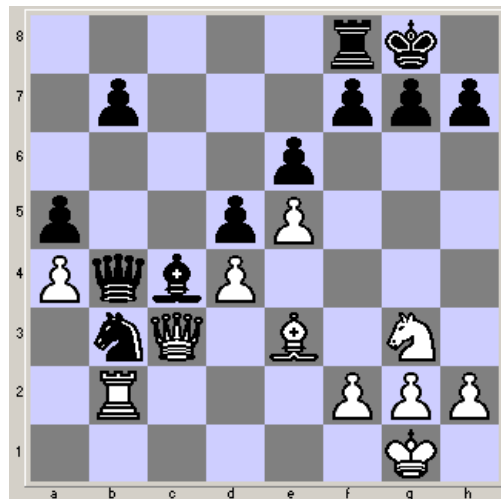
15.Nc3 Rc8

16.Rec1 O-O 17.Qb2 [D]

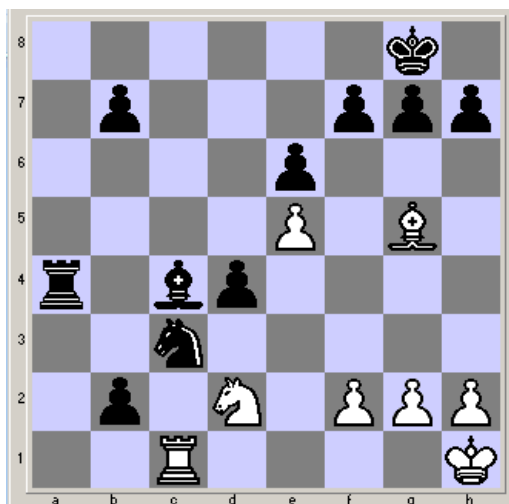


17...Bd3

18.a3 Bxc3 19.Rxc3 Rxc3 20.Qxc3 Nxb3 21.Ra2  
Bc4 22.Rb2 a5 23.a4 Qb4 [D]



24.Qxb4 axb4 25.Nf1 Ra8 26.Ra2 Nxd4 27.Rb2  
Ne2+ 28.Kh1 Rxa4 29.Rb1 d4 30.Bg5 Nc3  
31.Rc1 b3 32.Nd2 b2 [D]



0-1

**In Remembrance:**

**Tony Owoc**

**November 21, 1958 - June 29, 2012**

Tony played in Club tournaments from '92 thru '98 and had a high 1600 rating. While he did not play tournaments after that, Tony came by sometimes, the last about six months ago.

Those who knew him would all say he was a great guy. You can find his obit on this site by typing Owoc in the last name search field:  
<http://www.legacy.com/obituaries/postgazette>

**Other places to play chess:**

All of the below are for friendly off hand non-rated games (clocks optional). Bring chess set.

Wednesday evenings 7:30 to 10:00 PM at the Covenant Presbyterian PCA Church located off Sumneytown Pike (Route 63) about a mile west of Harleysville. Turn left if travelling west onto Covenant Lane. For more info, you may contact Jonathan English at [startreck@gmail.com](mailto:startreck@gmail.com).

Tuesday mornings 9:30 AM to Noon at the Pennridge Community Senior Center in Silverdale. Located on route 113 near route 152 across the street from the John Deere dealer.  
<http://www.pennridgecenter.org>.

Monday evenings about 6:00 to 10:00 PM, "House of Coffee", (formally Saxby's) 22 North Main Street, Doylestown.

Tournament Schedule			
DATE	RD.	EVENT	COMMENTS
8/3/12	1 of 3 *	August Quads (3 rounds) 40/90; SD30 EF:\$10/\$15	All three games must be played. If you cannot attend on a certain Friday night, please reschedule at your opponent's convenience.
8/10/12	2 of 3 *		
8/24/12	3 of 3 *		
8/24/12	Number of rounds determined at site*	4th Annual Touch-Move Blitz Championship. Round Robin. Sections determined at site. G5 EF: \$2/\$5	Whether you call it Speed Chess, Five Minute, Lightning Chess, or Blitz it's fast and furious. All games are USCF Quick Rated and played according to strict touch-move rules
8/31/12		CLOSED	Closed for Labor Day
9/7/12	1 of 5 *	Membership Drive 5 Round Swiss 40/90;SD/45 EF: \$36	Members pay annual dues. No separate entry fee for tournament.  <b>Winner is NPCC club champion!</b>  <b>Free yearly NPCC membership to winner, free membership to top under 1600!</b>
9/14/12	2 of 5 *		
9/21/12	3 of 5 *		
9/28/12	4 of 5 *		
10/5/12	5 of 5 *		
<p><b>More to be printed. Keep checking in. Thanks. You may also check the website:</b> <a href="http://www.northpennchessclub.org">www.northpennchessclub.org</a> * <b>NOTE:</b> All rd's. begin at 8 PM. Arrive 7:45 1<sup>st</sup> Round!</p>			