

# ~ En Passant ~

*Newsletter of the North Penn Chess Club of Lansdale, Spring 2012, Part 1*

North Penn Chess Club  
500 West Main Street  
Lansdale, PA 19446  
[www.northpennchessclub.org](http://www.northpennchessclub.org)

(215) 699-8418

[donfunk@msn.com](mailto:donfunk@msn.com)

Olin Mastin, Editor

## The North Penn Chess Club 33<sup>rd</sup> Annual Winter Robin is now history!

By Olin Mastin

The Winter Robin is now over. Several hard fought games have now entered the North Penn Chess Club annals of games past. This issue will document many of these games. I will save other games for future issues. Many thanks to all of you for submitting games to facilitate a successful newsletter!

### All of the following games are from the 2012 NPCC Winter Robin:

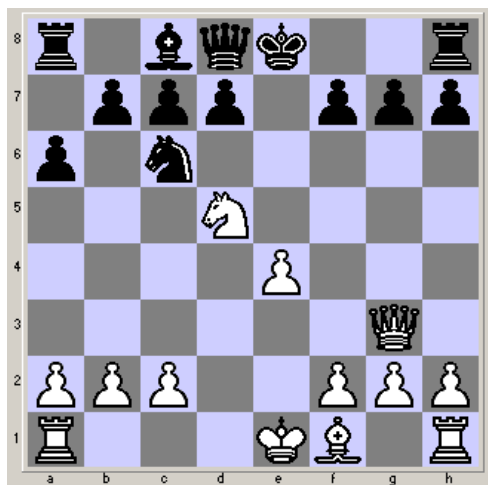
Round 2, January 13, 2012

White: Doug Kern (1636)

Black: Bob Kampia (1794)

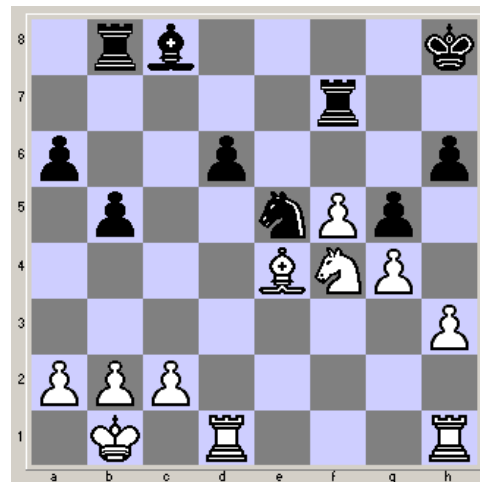
(Submitted by Doug, with his comments.)

1.e4 e5 2.Nf3 Nc6 3.d4 exd4 4.Nxd4 Nge7  
5.Nc3 a6 6.Bg5 Nxd4 7.Qxd4 Nc6 8.Qe3 Be7  
9.Bxe7 Qxe7 10.Nd5 (This is the position white had in mind when playing 6. Bg5) Qd8 11.Qg3 [D] (Double attack – c7 and g7)



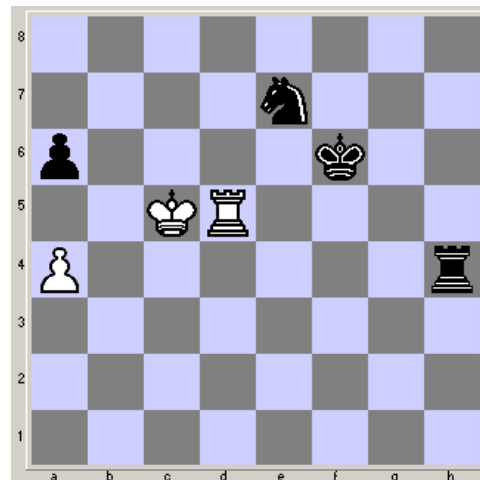
12.Nxc7 Rb8 13.O-O-O Qe7 14.Nd5 11...O-O

(Obviously the e-pawn is immune due to Nf6+, picking up the queen.) Qe5 15.f4 Qe6 16.Kb1 Kh8 17.Bd3 (17. e5 looked good as well; a tough choice to make) f5 18.Nc3 fxe4 19.Bxe4 d6 20.Qh4 h6 21.f5 Qf6 22.Qxf6 Rxf6 23.g4 Ne5 24.h3 b5 25.Nd5 Rf7 26.Nf4 g5 [D] (This move surprised me, not sure why)



27.Bd5?? (a

blunder – I forgot that the knight covers f7; Nh5 or Ng6+ is much better) gxf4 28.Bxf7 Nxf7 29.Rhf1 Bb7 30.Rxf4 Bg2 31.h4 d5 32.Re1 Be4 33.Rfxe4 dxe4 34.Rxe4 Rd8 35.b3 Rd6 36.Kb2 Kg7 37.c4 bxc4 38.bxc4 Kf6 39.Kc3 Ne5 40.c5 Rd3+ 41.Kb4 Rd5 42.a4 (42. Ka5 is probably a better choice) h5! 43.c6? (Not many good choices here) Nxc6+ 44.Kc4 Re5 45.Rf4 hxg4 46.Rxg4 Rxf5 47.Rg5 Rf4+ 48.Kc5 Rxh4 49.Rd5 Ne7 [D]



50.Rd4??

(Another blunder; 50. Rd6+ Ke5 51.Rxa6 is probably drawn)

Rxd4 51.Kxd4 Ke6 52.Kc5 Nd5 53.Kc6 Ke5  
 54.Kb7 Nb4 55.Kb6 Kd5 56.Ka5 Kc4 57.Kb6 Kc3  
 58.Kc5 Kb3 59.a5 Ka4 60.Kb6 Kb3 61.Kb7 Kc3  
 62.Ka7 Kc4 63.Kb6 Kd5 64.Kc7 Kc5 65. Resigns  
 0-1

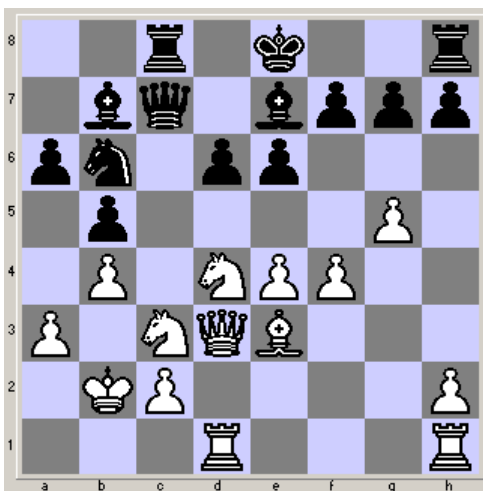
Round 2, January 13, 2012

White: Tom DiMarco (1416)

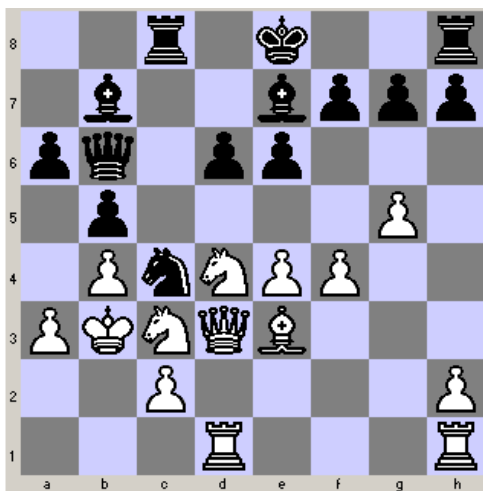
Black: Olin Mastin (1566)

(Submitted by Tom, with comments by Olin.)

1.e4 c5 2.Nf3 d6 3.d4 cxd4 4.Nxd4 Nf6 5.Nc3  
 a6 6.Be3 e6 7.Be2 b5 8.a3 Bb7 9.f3 Nbd7  
 10.Qd2 Be7 11.O-O-O Rc8 12.g4 Ne5 13.g5  
 Nfd7 14.f4 Nc4 15.Bxc4 Rxc4 16.b3 Rc8 17.b4  
 Qc7 18.Kb2 Nb6 19.Qd3 [D]

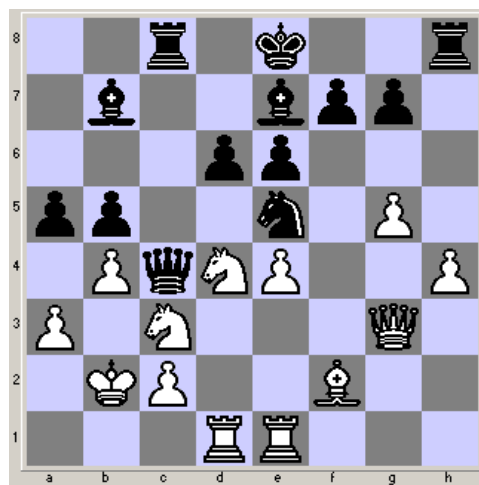


(Computer analysis here says 19...Qxc3+!  
 ((Much more accurate than the game)) 20. Qxc3  
 Na4+ 21. Ka1 Rxc3 etc...) **Game continued 19  
 ...Nc4+ 20.Kb3 Qb6 [D]**

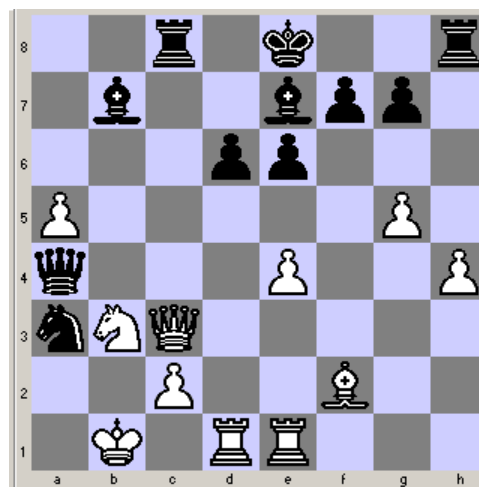


(A useless  
 move and after a long thought to boot! 20... Nb6!  
 is called for) **21.Rhe1** (computer says 21.Nf5!  
 Nxe3 22.Qxe3 Qxe3 23.Nxe3) **21... Qc7** (the  
 queen went back to where it belongs!) **22. h4 h6**  
**23.Bf2 hxg5 24.fxg5** (I was expecting White to  
 try hxg5 with a later rook trade on h1, and  
 checking Black on h8) **...Ne5 25.Qg3?** (The queen

had to stay on the queenside) 25...Qc4+ 26.Kb2  
 a5 [D]



27.bxa5 b4  
 28.axb4 Qxb4+ 29.Nb3 Nc4+ 30.Kb1 Qa3  
 31.Na4 Qxa4 32.Qc3?? (Rc1 would have offered  
 some resistance) Na3+! [D]



(White's  
 queen and the game are gone.) **White resigns.  
 0-1**

Round 2, January 13, 2012

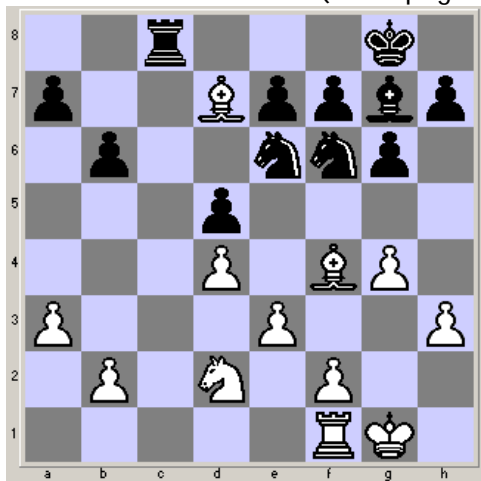
White: Harry Hartman (904)

Black: George Murphy (1595)

(Submitted by Harry, with comments by Olin.)

1.d4 Nf6 2.Nf3 g6 3.Bf4 Bg7 4.Nbd2 d5 5.e3  
 O-O 6.Bd3 Nbd7 7.O-O c5 8.c3 b6 9.a3 Bb7  
 10.h3 Rc8 11.Rc1 Re8 12.g4 cxd4 13.cxd4  
 Rc6 14.Bb5 Rxc1 15.Qxc1 Qc8 16.Ne5 Rd8  
 17.Nc6 Bxc6 18.Bxc6 Nf8 19.Bb5 Ne6  
 20.Qxc8 Rxc8 21.Bd7?? (Whoops!) Nxd7! [D]  
 (page 3) 22.Bg3 Rc2 23.Nb1 Ng5 24.Kg2 Nf6  
 25.Be5 Nfe4 26.Bxg7 Kxg7 27.h4 Ne6 28.a4  
 Rxb2 29.g5 f6 30.Kf3 fxg5 31.hxg5 N6xg5+  
 32.Kf4 Kf6 33.Kg4 Rxf2 34.Rxf2+ Nxf2+  
 35.Kg3 Nfe4+ 36.Kf4 h5 37.Na3 h4 38.Nb5 h3  
 39.Nc7 e6 40.Ne8+ Kf7 41.Nc7 h2 42.Nxd5  
 exd5 43.Ke5 Nc3 44.Kf4 0-1

Position after 21. Bd7?? (From page 2)



Round 3, January 20, 2012

White: Eric Funk (2028)

Black: Doug Kern (1636)

(Submitted by Eric, with his comments.)

1.c4 d6 2.d4 e5 3.Nf3 e4 4.Nfd2 f5 5.e3 c5

6.g4 (It's only move 6 and it's already a dogfight.) 6....cd 7.ed Nc6 8.Bg2 d5 [D]



(Not 8.... Nxd4 9.Nxe4 with good play for white.)

9.cd Qxd5 (Not 9.... Nxd4?? 10.Qa4+.) 10.Nb3

Bb4+ (Another possibility was 10.... fg, after

which play might have proceeded: 11.0-0 Bf5

((not 11.... Bb4 12.a3, gaining a tempo for

white)) 12.Nc3 Qd7 and 13.Bf4, intending

14.d5.) 11.Nc3 Bxc3+ 12.bxc3 Qc4 13.Bb2

(Definitely stronger than 13.Bd2. I'm already

looking to drive away the blockade on c4 so that

I can open the a1-h8 diagonal for my dark-

squared bishop.) 13.... Nf6 14. g5 Nd5 15.Bf1

Qa4 16.c4 Qb4+ 17.Qd2 e3 18.Qxb4 ef+ [D]

(This "in-between move" helps white seize open

lines. Better was 18.... Ndxb4 20.0-0 Nxa2+

Kb1 21.Nab4 22.d5 Nd8 which keeps black in

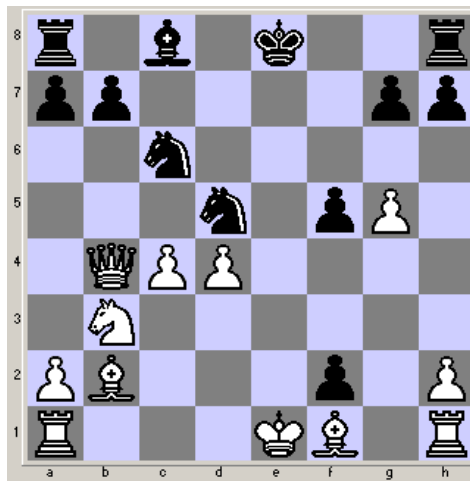
the game.) 19.Kxf2 Ndxb4 20.d5 Nd8 21.Bxg7

Rg8 22.Bf6 Bd7 (This drops a piece but it is

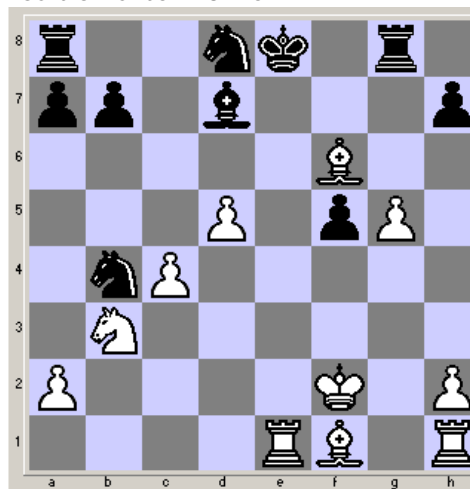
difficult at this point to recommend a move for

black.) 23.Re1+ [D]

Position after 18...ef+



Position after 23.Re1+



1 - 0

Round 4, January 27, 2012

White: George Murphy (1595)

Black: Olin Mastin (1566)

(Submitted by Olin, with my comments.)

1.Nf3 d5 2.d4 Nc6 3.c4 e5 4.cxd5 Qxd5 5.Nc3

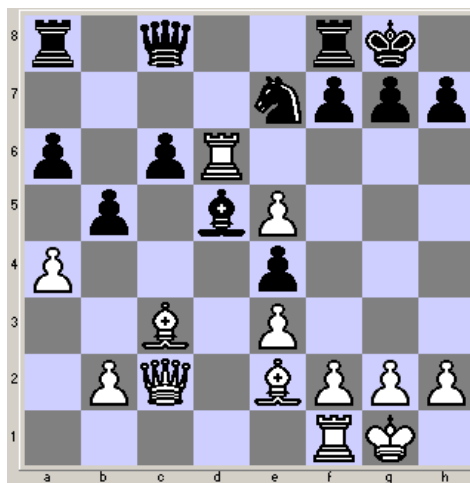
Bb4 6.Bd2 Bxc3 7.Bxc3 e4 8.Ne5 Nge7 9.e3

O-O 10.Bc4 Qd8 11.O-O Nxe5 12.dxe5 Bf5

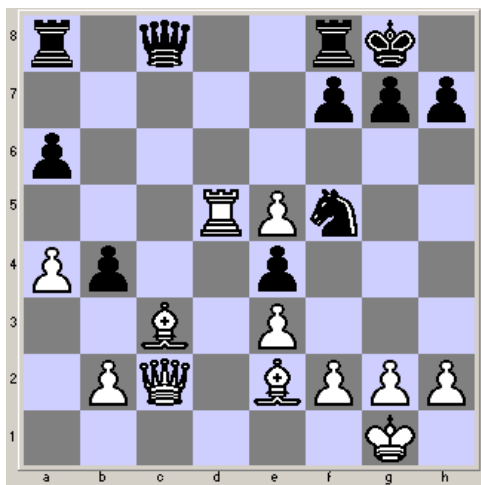
13.Qb3 Qc8 14.Rad1 a6 15.a4 c6 16.Rd6 b5

17.Be2 Be6 18.Qc2 Bd5 [D] (Now the rook is

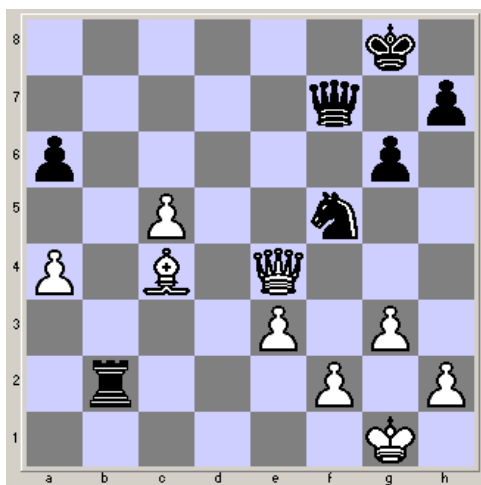
cut off)



19.Rd1 Nf5 20.R6xd5 cxd5 21.Rxd5 b4! [D]  
 (And now the bishop is lost.)



22.Qxe4 bxc3 23.bxc3 Rb8 24.g3 g6 25.c4 Rd8  
 26.Rxd8+ Qxd8 27.e6 Qe8 28.exf7+ Qxf7 29.c5  
 Rb2?? (Way to blunder! Thinking to secure the  
 7th rank) 30.Bc4! [D] (Yes, I did force the  
 bishop to move, didn't I?)



Rb1+

(Wishfully hoping that George would snap off  
 the rook leaving me with my knight after I  
 capture the White's bishop, alas, no such luck!)  
 31.Kg2 Nxe3+?? (Game is over anyway!) 32.fxe3  
 Rb2+ 33.Kh3 h5 34.Bxf7+ Kxf7 35.Qd5+ Kf8  
 36.Qd6+ Kf7 37.Qf4+ Ke6 38.c6 Kd5 39.Qd4+  
 1-0

Round 4, January 27, 2012

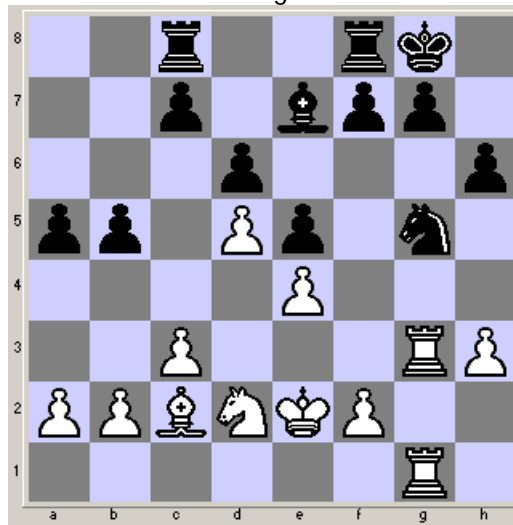
White: Jonathan Rumpf (441)

Black: Tom DiMarco (1416)

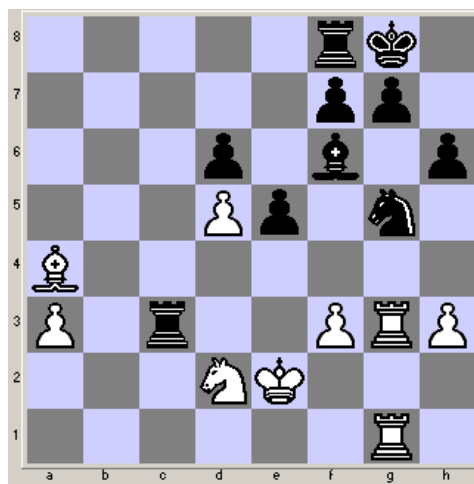
(Submitted by Jonathan, with comments by Olin.)

1.e4 e5 2.Nf3 Nc6 3.Bb5 d6 4.d3 a6 5.Ba4 b5  
 6.Bb3 Bg4 7.c3 Qf6 8.Nbd2 Nge7 9.Bc2 Ng6  
 10.Nb3 h6 11.h3 Bxf3 12.gxf3 Nf4 13.Bxf4 Qxf4  
 14.O-O Ne7 15.d4 Ng6 16.Re1 Nh4 17.Kf1 Nxf3  
 18.Re2 Qh2 19.Re3 Qh1+ 20.Ke2 Qxd1+  
 21.Bxd1 Ng5 22.Bc2 Be7 23.d5 O-O 24.Rg1 a5  
 25.Nd2 Rac8  
 26.Reg3 [D]

Position after 26.Reg3

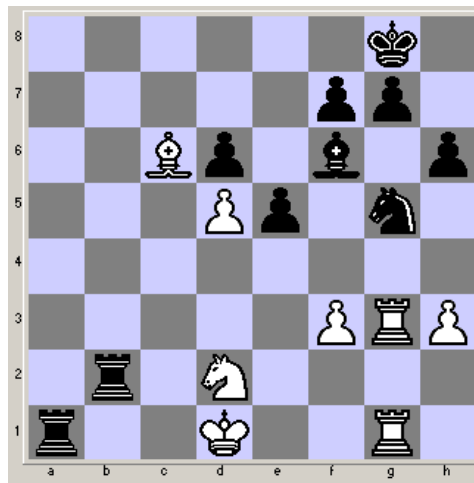


26...Bf6 27.f3 c6 28.Bb3 a4 29.Bc2 cxd5  
 30.exd5 Rc5 31.c4 bxc4 32.a3 c3 33.bxc3 Rxc3  
 34.Bxa4 [D]



34...Ra8

35.Nb1 Rc4 36.Bc6 Rb8 37.Nd2 Rb2 38.Ke3  
 Rc3+ 39.Ke2 Rxa3 40.Kd1 Ra1+ [D] 0-1



(White did not have to resign here. After 41.Ke2  
 Rxc3 42.Rxc3 etc...there is still some play left  
 even though Black has two more pawns than  
 White.)

Round 5, February 3, 2012

White: Doug Kern (1636)

Black: Joe Kennedy (1603)

(Submitted by Doug, with his comments, except as noted by Olin.)

1.e4 e5 2.Nf3 Nc6 3.d4 exd4 4.Nxd4 Nxd4

5.Qxd4 d6 6.Nc3 Nf6 7.Bg5 Be7 8.f4 c5

9.Qd2 (Fritz gives 9. Bb5+ Bd7 10. Qd3 as

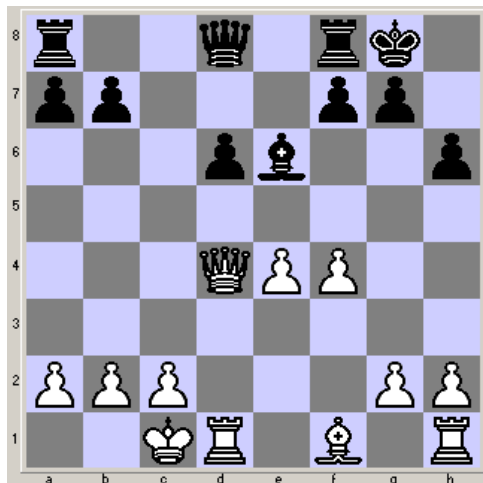
better) 9...h6 (now the bishop must take as 10.

Bh4 loses a pawn) 10.Bxf6 Bxf6 11.O-O-O Bd4

12. Nb5 O-O (Losing a pawn but gearing up for a

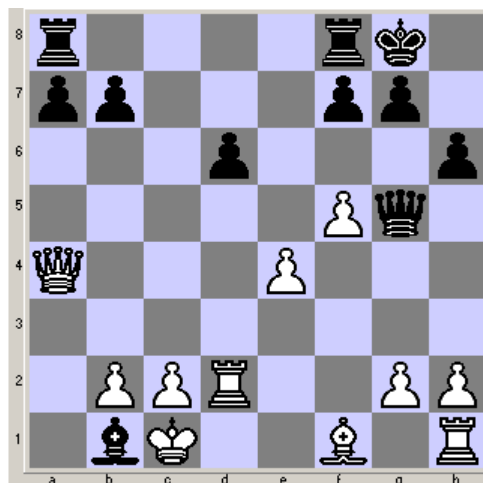
queenside attack) 13.Nxd4 cxd4 14.Qxd4 Be6

[D]



15.f5 Bxa2

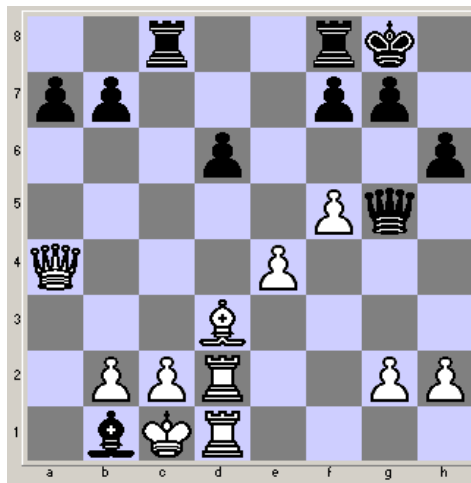
(The bishop is trapped, but black gets to hold the initiative for quite some time) 16.Qa4 (Fritz gives 16.b3 a5 17. Kb2 a4 as better; I don't like my king exposed so much) 16...Qg5+ 17.Rd2 Bb1[D]



(The king is

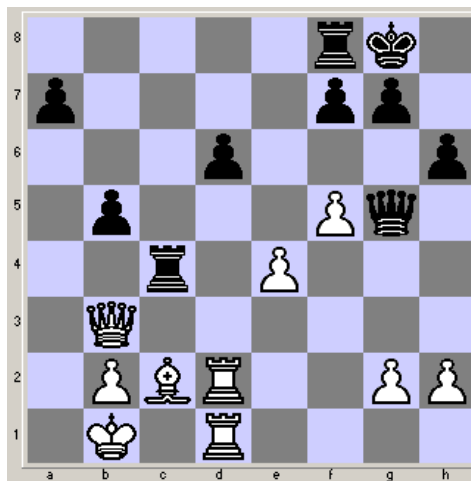
overworked; bishop cannot be taken) 18.Bd3 (Crafty gives 18.Qd4 Ba2 19.b3 followed by 20. Bc4 etc...with interesting play -- Olin) (Remarkably, after I allowed Crafty to analyze longer, it too, picked Doug's move! 18.Bd3 Rfc8 19.Rd1 Bxc2 20.Bxc2 Rc6 21.Kb1, etc... Slightly different continuation but similar strategy to that of the game. - Olin) 18...Rac8 19.Rhd1 [D] (The rook is protected so the king can now take the bishop)

Position after 19.Rhd1



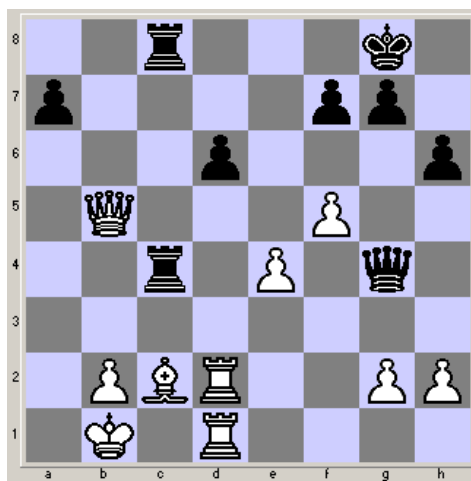
19 ...b5

20.Qb3 Bxc2 21.Bxc2 Rc4 22.Kb1 [D]



(Breaking

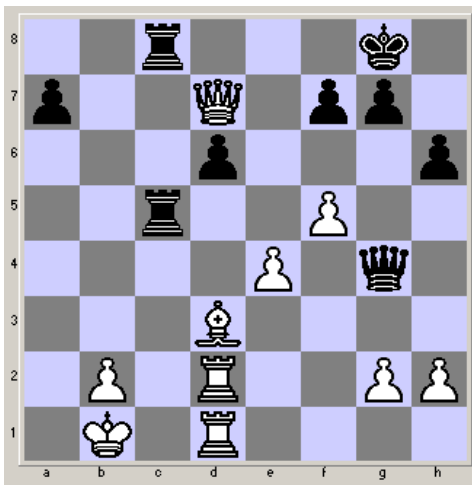
the pin and allowing white to unravel) 22 ...Rfc8 23.Qxb5 Qg4 [D]



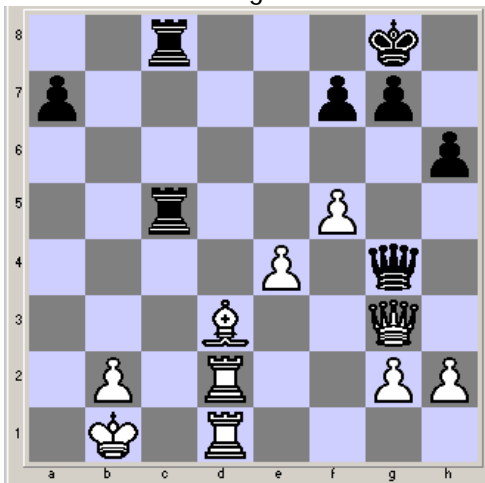
(Threatening

Rxc2 followed by Qxd1) 24.Bd3 R4c5 25.Qd7 [D] (Probing for weakness and grabbing another pawn) 25...Rb8 (Loses a tempo after Qxd6) 26.Qxd6 Rbc8 27.Qg3 [D] 27... Qxg3 (The queen cannot escape; black's threats diminish without the queen) (i.e. if 28. Qh5, then ...Be2! -- Olin) 28.hxg3 a5 29.Rc2 Rxc2 30.Bxc2 Kf8 31.Rd7 Rc6 32.Bb3 Rf6 [D] (See diagrams on page 6)

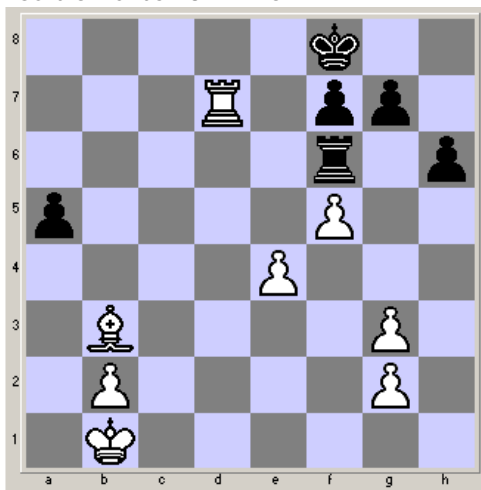
Position after 25.Qd7



Position after 27.Qg3



Position after 32...Rf6

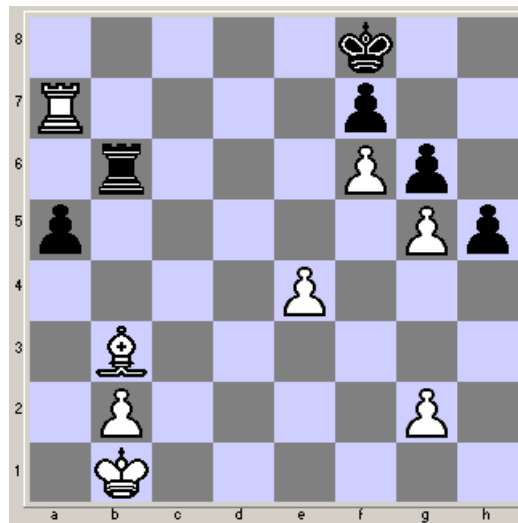


**33.Ra7** (33. Rxf7+ Rxf7 34. Bxf7 Kxf7 is also very good) **33...g6** **34. g4 h5 35.g5 Rb6 36.f6!** [D]

**36...Resigns** (The threats of Ra8 mate and Bxf7 cannot both be stopped) 1-0

*(I would say a masterfully executed game by Doug! - Olin)*

Position after 36.f6!



**More Winter Robin games in next issue.**

### Tournament Schedule

DATE	RD.	EVENT	COMMENTS
3/9/12	1 of 4 *	March Swiss	Phone Tournament Director prior to taking a bye. No call means you will be paired; no show means you will be dropped from the tournament.
3/16/12	2 of 4 *	(4 rounds)	
3/23/12	3 of 4 *	40/80; SD30	
3/30/12	4 of 4 *	EF:\$12/\$18	
4/6/12	.	CLOSED	Closed for Good Friday.
4/13/12	1 of 3 *	April Quads (3 rd's. in 4-man sections) 40/90;SD/30 EF:\$10/\$15	<u>Must</u> play all three rounds.
4/20/12	2 of 3 *		
4/27/12	3 of 3 *		

**More to be printed. Keep checking in. Thanks.**  
You may also check the website:

[www.northpennchessclub.org](http://www.northpennchessclub.org)

\* **NOTE:** All rd's. begin at 8 PM. Arrive 7:45 1<sup>st</sup> round!



**Round 2 - Doug vs. Bob** (George in back checking results!)

## 2012 WINTER ROBIN CROSS TABLE

### Section I.

<u>MEM ID</u>	<u>Name</u>	<u>RTG</u>	<u>PLR</u>	<u>1</u>	<u>2</u>	<u>3</u>	<u>4</u>	<u>5</u>	<u>6</u>	<u>7</u>	<u>8</u>	<u>Total</u>
11438202	Funk, Eric A.	2028	<u>1</u>	■	1	1	1	½	1	1	½	6
10166187	Kampia, Robert	1794	<u>2</u>	0	■	1	1	½	½	1	1	5
12470652	Frisk, John Goodsell	1778	<u>3</u>	0	0	■	0	1F	1	0	½	2 ½
12619638	Kern, Douglas J.	1636	<u>4</u>	0	0	1	■	1	1	1	1	5
12448332	Messinger, Allan H.	1632	<u>5</u>	½	½	OF	0	■	0	0	0	1
12639787	Moyer, Willard G.	1631	<u>6</u>	0	½	0	0	1	■	0	½	2
12475788	Kennedy, Joseph J.	1603	<u>7</u>	0	0	1	0	1	1	■	1	4
10165784	Funk, Donald L.	1600	<u>8</u>	½	0	½	0	1	½	0	■	2 ½

### Section II.

<u>MEM ID</u>	<u>Name</u>	<u>RTG</u>	<u>PLR</u>	<u>1</u>	<u>2</u>	<u>3</u>	<u>4</u>	<u>5</u>	<u>6</u>	<u>7</u>	<u>8</u>	<u>Total</u>
12544289	Murphy, George T.	1595	<u>1</u>	■	1	0	½	½	0	1	1	4
10153379	Mastin Jr., E. Olin	1566	<u>2</u>	0	■	1	1	1	1	1	1	6
10156599	Campion, William J.	1558	<u>3</u>	1	0	■	0	1	1	1	1	5
12421950	DiMarco, Thomas	1416	<u>4</u>	½	0	1	■	1	1	1	1	5 ½
10156041	Stevens, Gary K.	1354	<u>5</u>	½	0	0	0	■	0	1	1	2 ½
14303364	Sulat, Gregory	1111	<u>6</u>	1	0	0	0	1	■	1	1	4
12398374	Hartman, Harry	904	<u>7</u>	0	0	0	0	0	0	■	1	1
12071690	Rumpf, Jonathan A.	441	<u>8</u>	0	0	0	0	0	0	0	■	0