

# ~ En Passant ~

*Newsletter of the North Penn Chess Club of Lansdale, PA - Fall 2013, Part 3A*  
 Olin Mastin, Editor

North Penn Chess Club  
 500 West Main Street  
 Lansdale, PA 19446  
[www.northpennchessclub.org](http://www.northpennchessclub.org)

(215) 699-8418 [donfunk@msn.com](mailto:donfunk@msn.com)

This issue will be devoted to more games played in the NPCC 2013 Membership Drive Tournament. Thanks to all for submitting games!

## Round: 4

Submitted by Olin with my comments and selected Fritz comments *[shown thusly]*.

White: George Murphy (1472)

Black: Olin Mastin (1512)

Date: 9/27/2013

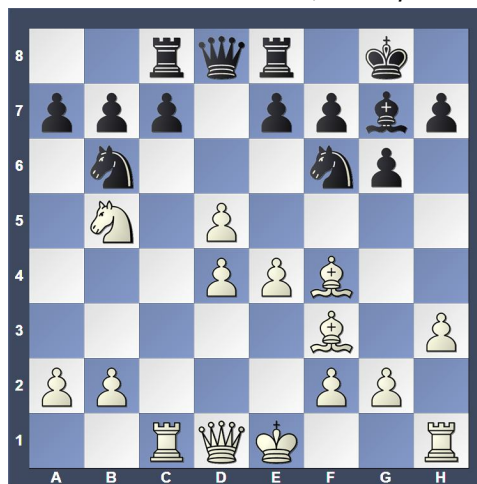
[D92: Grünfeld: 4 Nf3 Bg7 5 Bf4] 1.d4 d5 2.Nf3 Nf6 3.c4 g6 4.Nc3 Bg7 5.Bf4 0-0 6.Rc1 [D]



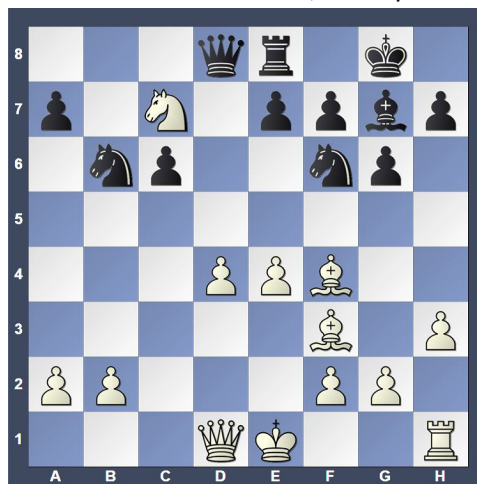
6...Nbd7?

[6...Nh5 and Black can hope to survive 7.Be5 dxc4] 7.cxd5 [Weaker is 7.Nxd5 Nxd5 8.cxd5 Nf6 9.Bxc7 Qxd5 (9...Nxd5?? 10.Bxd8 Rxd8 11.Qb3)] 7...Nb6 8.e4 Re8 [8...Nh5 9.Be3] 9.Be2 Nh5 10.Be3 Bg4 [10...e6 11.dxe6 Bxe6] 11.h3 Bxf3 12.Bxf3 [12.gxf3?! e5 13.dxe6 Rxe6] 12...Nf6 13.Bf4 [13.Nb5!? seems even better, 13...Nxe4 14.Bxe4 e5 15.dxe5 Rxe5] 13...Rc8 14.Nb5 [D] (Next col.) (Olin -- White has a very good position. I thought I was totally lost here.) [14.Qb3 c6 15.dxc6 bxc6] 14...c6 15.dxc6 [15.Nxa7?! Nbx5 16.exd5 Qa5+ 17.b4 Qxa7 18.dxc6 bxc6 19.Bxc6 Rxc6 20.Rxc6 Qb7] 15...Rxc6 16.Rxc6 [16.0-0 Rxc1 17.Bxc1 a6] 16...bxc6 17.Nc7 [D] (Next col.) (Text cont. next col.)

Position after 14.Nb5 (From prev. col.)



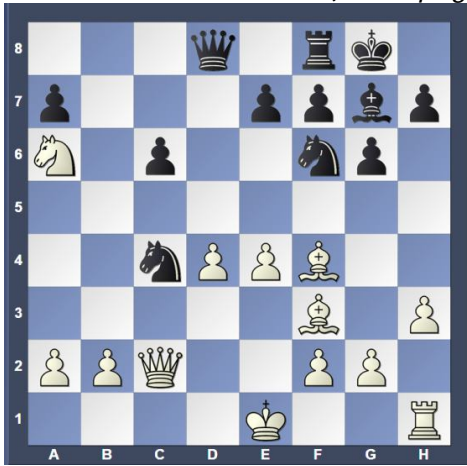
Position after 17.Nc7 (From prev. col.)



(Cont.

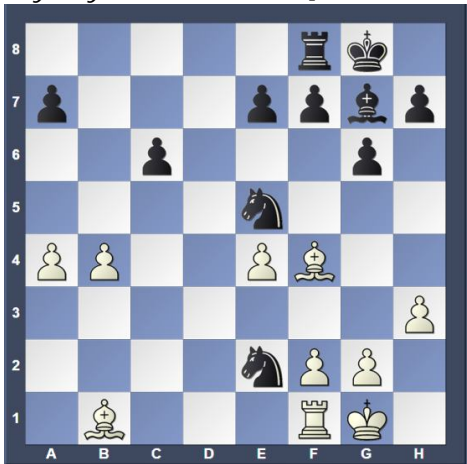
from prev. column) [17.Nxa7?! Qa8 18.Nxc6 Qxc6] 17...Rf8 18.Na6 (Olin -- I do not understand why my opponent thought he had to move his knight here. Perhaps he wanted c7 square to be available for his dark squared bishop to attack my queen?) 18...Nc4 [18...Nh5 19.Bxh5 gxh5] 19.Qc2?? [D] (p.2) (Olin -- Now I have good chances!) [Gives the opponent new chances. 19.0-0 and the scales tip in favor of White 19...Qb6 20.Nc5 Qxb2 21.Qa4] 19...Qa5+ 20.b4 [20.Kf1!? Qxa6 21.Be2 Qxa2 22.Bxc4 Qa1+ 23.Bc1 Nxe4 24.g4] 20...Qxa6 21.Be2 [21.0-0 Nh5 22.Bg5] 21...Na3 22.Qb3 [22.Bxa6??, a fat bite, but... 22...Nxc2+ 23.Kd2 Nxb4] 22...Nb5 23.a4 [23.Be3 Qb7 24.a4] 23...Nxd4 24.Bxa6 Nxb3 25.Bc4 Nd4 26.Bd3 Nd7 27.0-0 [27.Bg5 is not the saving move 27...Re8] 27...Ne5 (Text cont. p.2)

Position after 19.Qc2?? (From page1)



(Cont. from

page 1) 28.Bb1 [28.Bxe5, there is nothing else anyway 28...Bxe5 29.f4] 28...Ne2+ [D]



(Olin -- After

a bad opening, thinking that I was going to be totally lost, I never thought things would turn in my favor, thanks to my opponent's 19th move!) (White resigns) [29.Kh1 Nxf4] 0-1

**Round: 5**

Submitted by Bob with selected Fritz comments [shown thusly].

**White: Bob Kampia (1787)**

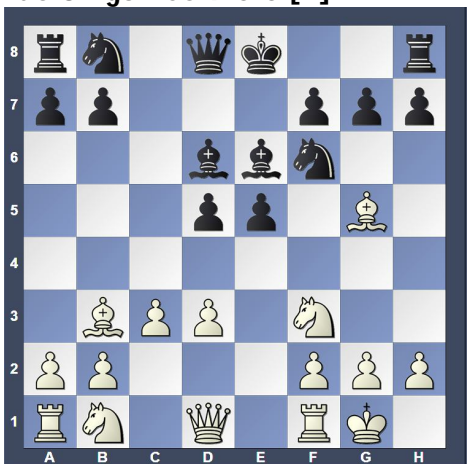
**Black: Eric Funk (2075)**

**Date: 10/11/2013**

[C24: Bishop's Opening: 2...Nf6] 1.e4 e5 2.Bc4 Nf6

3.d3 c6 4.Nf3 d5 5.exd5 cxd5 6.Bb3 Bb4+ 7.c3

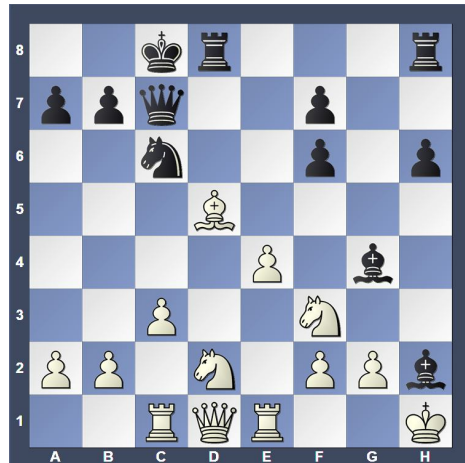
Bd6 8.Bg5 Be6 9.0-0 [D]



(Text cont. on

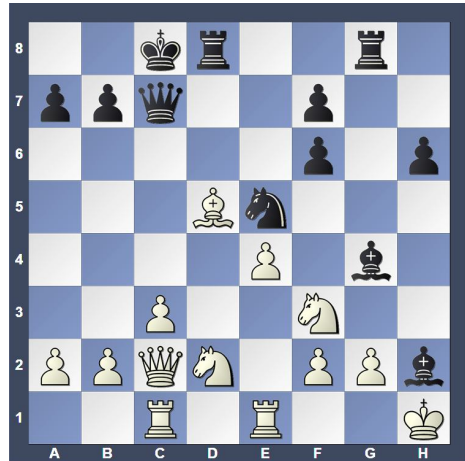
next col.)

(Cont. from prev. col.) 9...h6 10.Bh4 Qc7 [10...Nc6 11.Re1] 11.Bxf6 gxf6 12.Re1 Nc6 13.Nbd2 0-0-0 14.Rc1 e4 [14...Rhg8!? and Black is still in the game] 15.dxe4 Bg4 16.Bxd5 [16.exd5!? Bxh2+ 17.Kh1] 16...Bxh2+ 17.Kh1 [D]



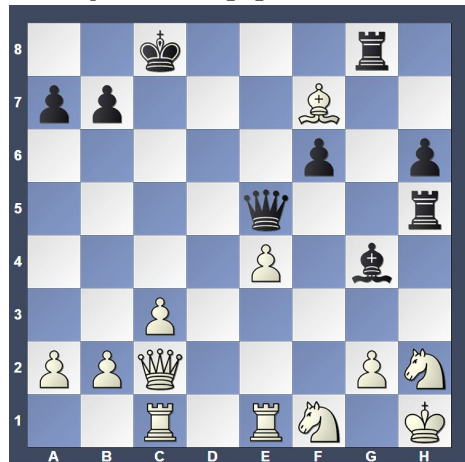
17...Ne5

[17...Bf4 18.Qb3 h5] 18.Qc2 [18.Qb3 Bxf3 19.Nxf3 (19.gxf3? Bf4 20.Rcd1 Bxd2 21.Rxd2 Nxf3 22.Qxb7+ Qxb7 23.Bxb7+ Kxb7 24.Rxd8 Rxd8-+; 19.Kxh2?? is refuted by the following mate in 3 19...Ng4+ 20.Kg1 Qh2+ 21.Kf1 Qxg2#) 19...Nxf3 20.gxf3] 18...Rhg8?? [D]



[Lets it slip

away: 18...Bxf3 19.Nxf3 Nxf3 20.gxf3 Qf4] 19.Nxh2 Rg5 20.f4 Rh5 21.fxe5 Qxe5 22.Ndf1 Rg8 [22...Qc7 doesn't get the cat off the tree 23.Kg1 Be6 24.Qe2] 23.Bxf7 [D]



Black

resigns. [23.Bxf7 Rgg5 24.Bxh5 Rxh5 25.Kg1] 1-0

**Round: 5**

Submitted by Joe with selected Fritz comments  
[shown thusly].

**White: Doug Kern (1919)**

**Black: Joe Mucerino (2095)**

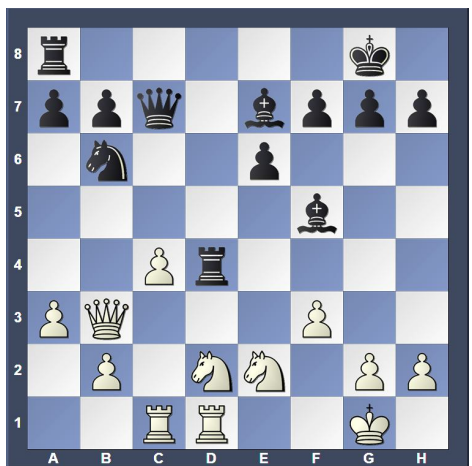
**Date: 10/11/2013**

[B01: Scandinavian Defense] 1.e4 d5 2.exd5 Nf6  
3.d4 Bg4 4.f3 Bf5 5.Bb5+ Nbd7 6.Ne2 Nxd5 [D]



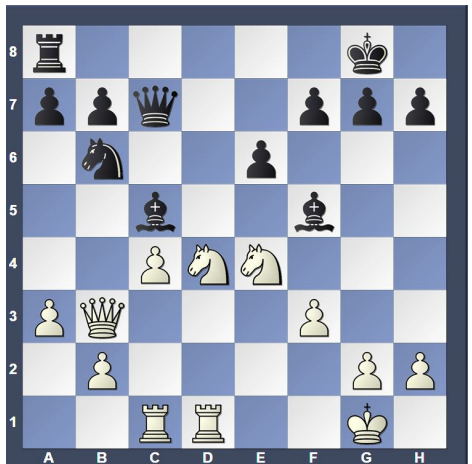
**7.Bxd7+**

[7.0-0!? would keep White alive] 7...Qxd7 8.0-0 e6  
9.a3 [9.Nbc3 0-0-0] 9...Be7 [9...0-0-0 10.Ng3]  
10.c4 Nb6 11.Qb3 c5 12.Be3 cxd4 [12...Bf6  
13.dxc5 Qa4 14.Qb5+ Qxb5 15.cxb5] 13.Bxd4  
[13.Nxd4!? and White is still in the game 13...Qa4  
14.Qc3] 13...0-0 14.Rd1 Qc7 15.Nd2 Rfd8  
16.Rac1 Rxd4! [D]



[Black is still

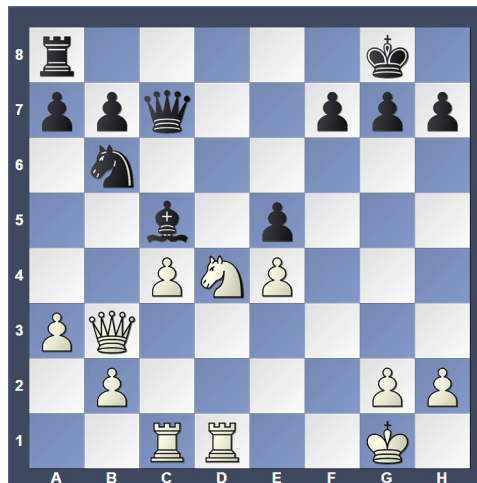
in the lead] 17.Nxd4 Bc5 18.Ne4? [D]



(Text cont.

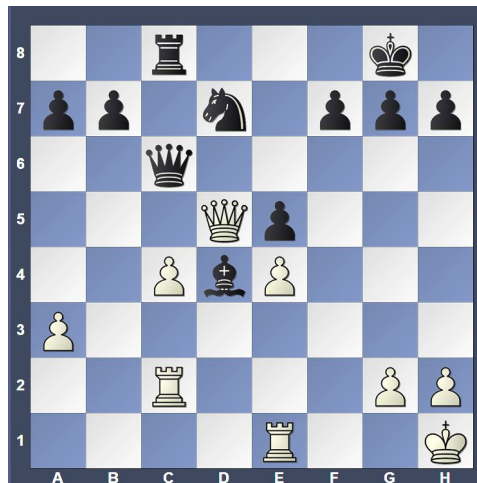
next col.)

(Cont. from prev. col.) [18.Qe3 e5 19.N2b3 exd4  
20.Qg5] 18...Bxe4 19.fxe4 e5 [D]



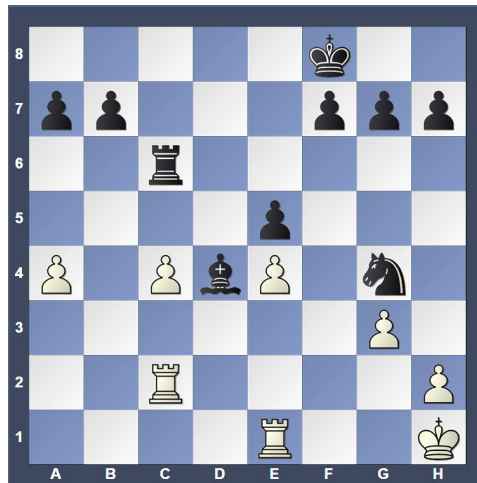
**20.Qg3**

[20.Kh1 is no salvation 20...Bxd4 21.Rc2 Nd7]  
20...Bxd4+ 21.Kh1 Qc6 [21...Bxb2 keeps an even  
firmer grip 22.Rb1 Nxc4 23.a4] 22.Re1 [22.b3  
does not help much 22...Qxe4 23.Qf3 Qc6]  
22...Bxb2 23.Rc2 Bd4 24.Qb3 Nd7 25.Qb5  
Rc8 26.Qd5 [D]



[26.Qxc6

a fruitless try to alter the course of the game  
26...Rxc6 27.g3 Ra6] 26...Nf6 27.Qxc6 Rxc6  
28.a4 Kf8 29.g3 Ng4 [D]



**0-1**



**Round: 5**

Submitted by Olin with my comments and selected Fritz comments [shown thusly].

**White: Olin Mastin (1512)**

**Black: Bill Campion (1497)**

**Date: 10/11/2013**

[B23: Closed Sicilian: Lines without g3] **1.e4 c5 2.Nc3 d6 3.f4 e6 4.Nf3 Nd7 5.Bb5 a6 6.Bxd7+ [D]**



(Capture of

the knight, I believe, is forced, else the bishop can be trapped by the pawns) **6...Bxd7 7.O-O Nf6N 8.d3 Be7 9.Qe1 Qc7 10.Kh1 [D]**



(I thought

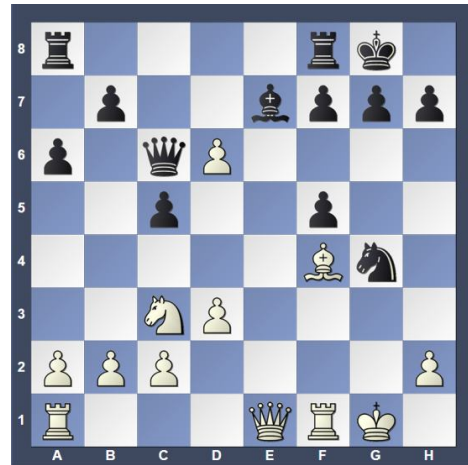
this king move was prudent to get it off g1-a7 diagonal) [10.e5 Nd5] **10...Bc6 11.f5 exf5 12.e5!? [12.exf5 Qd7] 12...Ng4 13.Bf4 Bxf3?? [D]**



(Text cont. next column)

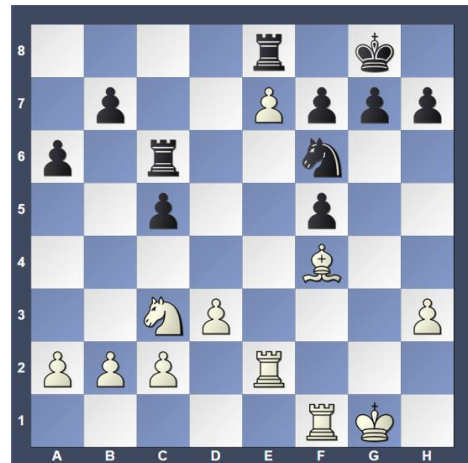
(Cont. from prev. col.) [Lets it slip away] (Black's dark squared bishop will be lost. He needed to relieve the ensuing pin.) [13...0-0-0 14.h3 h5] **14.exd6!**

**Bxg2+ 15.Kxg2 Qc6+ 16.Kg1 0-0 [D]**



(Too late. the

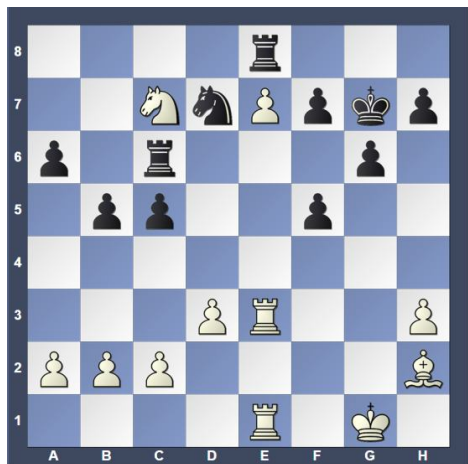
bishop is gone) **17.dxe7 Rfe8 18.h3 Nf6 19.Qe5 Qd7 [19...Qe6 does not solve anything 20.Qxc5 Rac8 21.Qb4 Qxe7 22.Qxe7 Rxe7 23.Bg5+-] 20.Rae1 Rac8 21.Qd6 [21.Bg5!? makes it even easier for White, (I disagree here with Fritz) 21...Rc6 22.Qxf5 Qxf5 23.Rxf5 Re6 (I do not understand why Fritz says this line is desirable for White. All it does is assure that White's powerful pawn will be lost!) 24.Rxe6 (What else?) (I inserted the moves from here as a follow-up of Fritz's line.) 24...fxe6 25.Rxc5 Kf7 26.Rc7 Rxe7] 21...Qc6 22.Qxc6 Rxc6 [22...bxc6?? 23.Bd6 g6 24.b3] 23.Re2 [D]**



[23.Bg5 and

White can already relax 23...g6] **23...b5 24.Rfe1 [24.Bg5 seems even better (Why would Fritz say this is better? I do not get it.) 24...Nh5 25.Kh2 f6] 24...Nh5?** (This seems to be a useless attack to White's bishop) [24...b4 25.Nd1] **25.Bh2** (Simple enough) **25...Nf6** (Leaving Black's knight on h4 served no useful purpose) **26.Re5 g6 27.Nd5 Nd7 [27...Nxd5 does not help much 28.Rxd5 Re6 29.Rxe6 fxe6 30.Rd7 Kf7 (I inserted the king move here. Once again White will lose the powerful pawn, but remain a piece up.)] 28.R5e3 [28.R5e2!? keeps an even firmer grip 28...c4] 28...Kg7? [28...Nf6 doesn't change anything anymore 29.Nc7 Rxc7 30.Bxc7] 29.Nc7!! [D]** (p.5) (Text cont. on p. 5)

Position after 29.Nc7!! (From p.4)



(Cont. from

p.4) (Black resigns) [29.Nc7 Rxc7 30.Bxc7] 1-0

**Round: 5**

Submitted by Matt with selected Fritz comments [shown thusly].

**White: Janos Fucsko (1751)**

**Black: Matt Martello (1775)**

**Date: 10/11/2013**

[A28: English Opening: Four Knights Variation] 1.Nf3 Nc6 2.c4 e5 3.Nc3 Nf6 4.d3 h6 5.e4 Bc5 6.Be3 N Qe7 7.Be2 0-0 8.0-0 Bxe3 9.fxe3 [D]



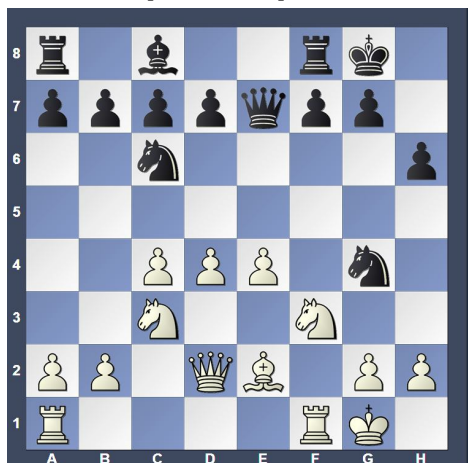
9...Qc5

[9...d6 10.Qd2] 10.Qd2 [10.d4 Qe7 11.Nd5]

10...Ng4? [10...d6 11.Nd5 Nxd5 12.exd5] 11.d4

[11.Nd5 might be the shorter path 11...a6 12.Nh4 d6]

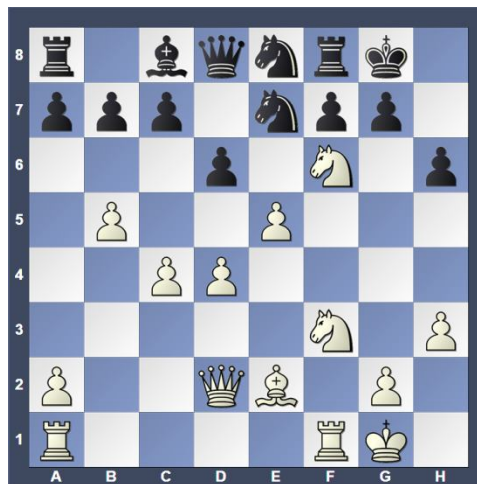
11...exd4 [11...Qe7!?] 12.exd4 Qe7 [D]



(Text cont.

next col.)

(Cont. from prev. col.) 13.h3 [13.Nd5 Qd8 (13...Qxe4?? the pawn is safe and cannot be captured without dire consequences 14.Bd3 Qe6 15.Nxc7) 14.Ne1 h5] 13...Nf6 14.e5 Ne8 15.Nd5 Qd8 16.b4 [16.Bd3!? d6] 16...d6 17.b5 Ne7 18.Nf6+?? [D]



[Weakening

the position, 18.Bd3] 18...gxf6 19.Qxh6 [19.exf6!? Nxf6 20.Qxh6] 19...Nf5 20.Qf4 fxe5 21.dxe5 dxe5 22.Qxe5 Qd6 23.Qc3 [23.c5 Qxe5 24.Nxe5 Be6] 23...Ng3 24.Rfe1 Nxe2+ [D]

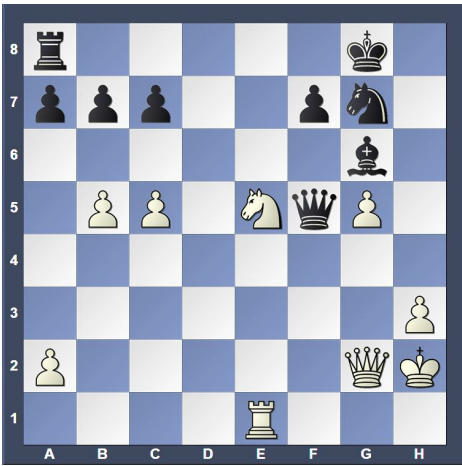


[24...Bf5!?

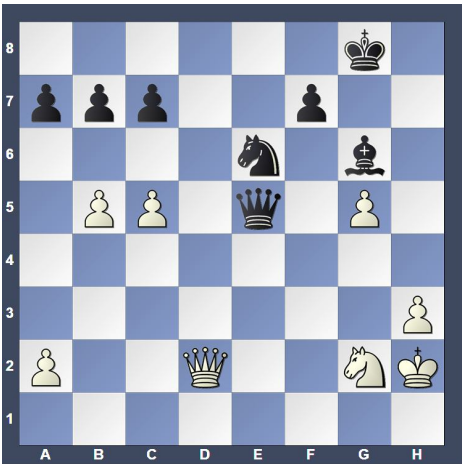
25.Nd4 Rd8 26.Rad1 Nxe2+ 27.Rxe2] 25.Rxe2 Qc5+ 26.Kh2 Ng7 27.Re5 Qd6 28.c5 Qf6 29.Rae1 Bf5 30.g4 [30.Qb4!? Ne6 31.R5e3] 30...Bg6 31.Qe3 [White plans g5] 31...Rfe8 32.g5 [32.Kg3 Re6 33.Qd4 Rxe5 34.Qxe5 Qxe5+ 35.Nxe5 Re8] 32...Rxe5 33.Nxe5 [33.gxf6 Rxe3 34.Rxe3 Nf5 35.Rd3] 33...Qe6 34.Qf2 Qf5 35.Qg2?? [D] (p.6) [35.Qxf5 Nxf5 36.Rd1] 35...Re8 36.Nf3 Rxe1 37.Nxe1 Qe4 [37...Qxc5 keeps an even firmer grip 38.Qd2] 38.Qd2 [38.Qxe4 a last effort to resist the inevitable 38...Bxe4 39.Kg3] 38...Ne6 39.Ng2 [39.b6 cannot undo what has already been done 39...Qe5+ 40.Kg2 Be4+ 41.Kf1 Qf5+ 42.Ke2 axb6 43.cxb6 cxb6] 39...Qe5+ [D] (p.6) [39...Qe5+ 40.Kg1 Qxc5+ 41.Qe3 Qxb5 42.Qxa7 Nxc5] White resigns.



Position after 35.Qg2?? (From p.5)



Position after 39...Qe5+ (From p.5)



0-1

**Round: 5**

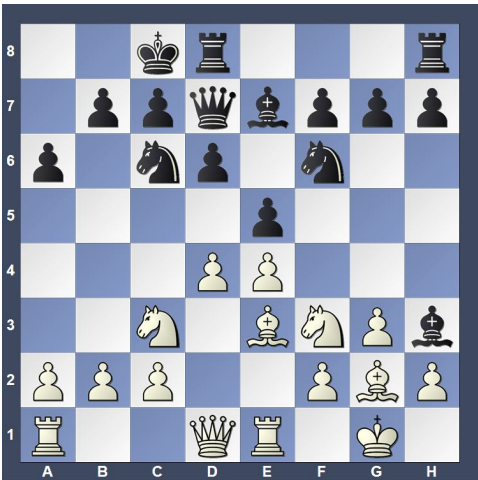
Submitted by Harry with selected Fritz comments [shown thusly].

**White: Jonathan Rumpf(400)**

**Black: Harry Hartman (878)**

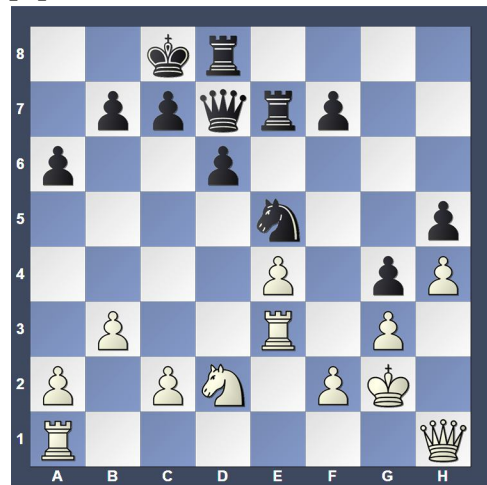
**Date: 10/11/2013**

[C44: Ponziani Opening and Scotch Gambit] 1.e4 e5  
 2.Nf3 d6 3.d3 Nc6 4.g3 Nf6 5.Bg2 Bg4 6.Nc3  
 Be7 7.0-0 Qd7 8.Re1 0-0-0 9.Be3 a6 10.d4  
 Bh3?? [D]



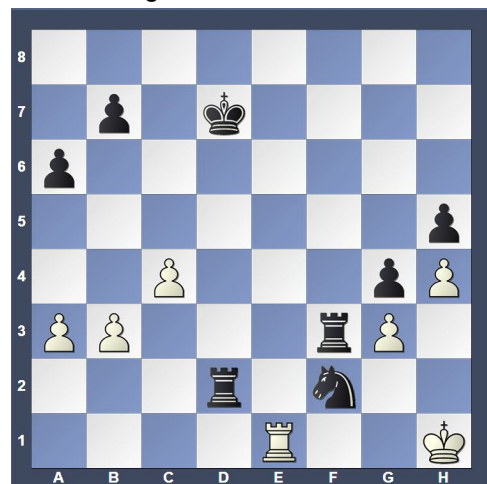
(Text cont. next col.)

[10...exd4 11.Bxd4 h5 12.h4] 11.dxe5?? [Weakening the position. 11.d5 and the scales tip in favor of White 11...Nd4 12.Bxd4 exd4 13.Qxd4 Bxg2 14.Kxg2] 11...Bxg2 12.Kxg2 Ng4? [12...dxe5 13.Qe2] 13.Nd5 Nxe3+ 14.Rxe3 Rhe8 15.h4 h6 16.Rc3 g5?? 17.Qh1?? [17.Nd4!? dxe5 18.Nxc6 bxc6] 17...g4? 18.Nd2 h5 19.Nxe7+ Rxe7 20.Re3? Nxe5 21.b3? [D]



[21.c4 f5

22.exf5 Rf8] 21...f5 22.c4 c5 23.a3? fxe4 24.Rxe4 Qf5?? [24...d5 25.Re3] 25.Rf1? d5 26.Rf4?? Qc2 27.Rd1 Nd3 28.Rf5 Nb2 29.Rxd5 Nxd1 30.Rxc5+ Rc7 [30...Kb8 31.Rg5 Rxd2 32.Rg8+ Kc7 33.Qg1 Rxf2+ 34.Qxf2 Qxf2+ 35.Kh1 Re1#] 31.Re5 Qxd2 32.Qf1 Qc3 [32...Rf7 33.Re2 Qc3 34.Kh2 Rd2 35.Re8+ Kd7 36.Re3 Rdx2+ 37.Qxf2 Rxf2+ 38.Kg1 Qxe3 39.Kh1 Qe1#] 33.Qe2 Qf3+! 34.Kg1 Qxf2+! 35.Kh1 Qf3+ 36.Kg1 Qf2+ 37.Kh1 Qxe2 38.Rxe2 Rf7 39.Kg1 Nc3 40.Re3 Rd1+ 41.Kg2 Rd2+ 42.Kg1 Nd1 43.Re8+ Kd7 44.Re1 Rf3 45.Kh1 Nf2+ 46.Kg1 Nh3+ 47.Kh1 Nf2+ [D]



(Text cont.

in Part 3B)

See Part 3B for continuation of Membership Drive games.

[www.northpennchessclub.org](http://www.northpennchessclub.org)