

~ En Passant ~

Newsletter of the North Penn Chess Club of Lansdale, Fall 2011

North Penn Chess Club
500 West Main Street
Lansdale, PA 19446
www.northpennchessclub.org
(215) 699-8418
donfunk@msn.com

Olin Mastin, Editor

Olin is Back (Remember that guy?)

After a nearly ten year hiatus, I reappeared on the NPCC scene. Living now in Telford, I am only eight miles from the club instead of twenty-five. I know most of you remember me as a TD, treasurer, and keeping the coffee hot water on tap.

Your current TD and treasurer, Eric Funk, asked me to be the newsletter writer. I used to help with the newsletter years ago with John Blumberg and Don Funk. Later the task was handled by Neil Brenner and then by Eric.

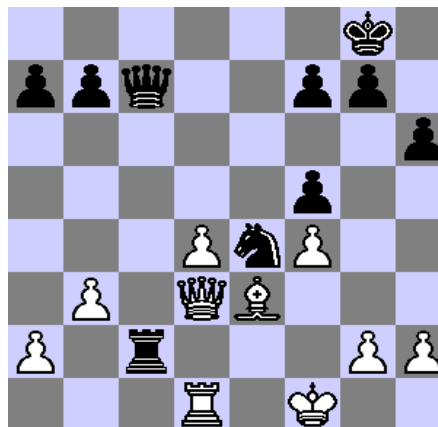
I don't plan anything elaborate, mainly just keeping everyone up to date on club activities, some games played by members and the tournament schedule.

This now brings me to the topic of games. Please, anyone who feels they have a game worthy of sharing, with or without comments or diagrams. I can insert diagrams of what you consider a critical position. Just let me know at what move number to insert it. You can give a copy of your score sheet to me, email a scanned copy or the moves as created by a program to eomastin2@verizon.net.

Next tournament will be the November Octagonal commencing Nov. 4th.

White: Don Funk 1643
Black: Olin Mastin 1573
Event: NPCC Summer Swiss 2011
Rd. 2
Date: August 5, 2011

1.d4 d5 2.e3 Bf5 3.Bd3 e6 4.Nf3 Nf6
5.Ne5 Nbd7 6.O-O Be7 7.f4 O-O 8.Nc3
c5 9.b3 Rc8 10.Bxf5 Bxf5 11.Qf3 Ne4
12.Nxd5 cxd4 13.Nxd7 Qxd7 14.Nxe7+
Qxe7 15.exd4 Rxc2 16.Qd1 Rfc8 17.Be3
Qh4 18.Rc1 Rxc1 19.Bxc1 h6 20.Be3
Rc3 21.Qe2 Qe7 22.Rd1 Qc7 23.Kf1 Rc2
24.Qd3

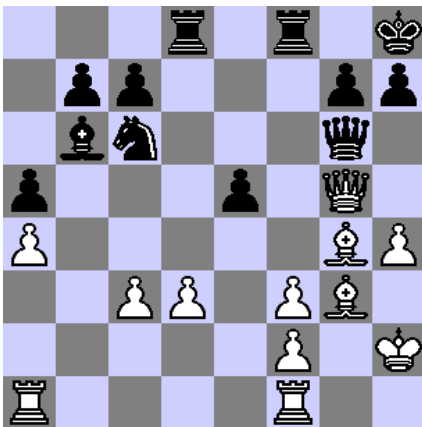


At this point the computer suggests 24... Rxa2, which should offer winning chances for black. Even though I briefly considered this move during the game, I went the side of caution going for the threefold repetition to secure the draw.

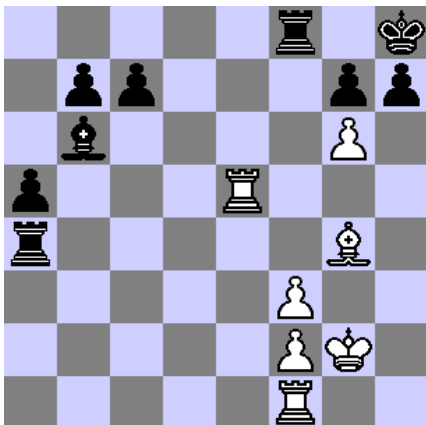
The game may have continued something like 25.Qc4 Qxc4+ 26.bxc4 Rc2 27.d5 etc... (Or possibly 25.Rc1 Qb6 26.d5 Qf6 with the threat of 27...Qb2 for which white has to defend, etc...) The game continued:
24...Rc3 25.Qe2 Rc2 26.Qd3 Rc3 27.Qe2 Rc2 28.Qd3 Rc3 29.Qd2 Rc2 1/2-1/2

White: Joe Kennedy 1600
 Black: Eric Funk 2013
 Event: NPCC Fall Membership Drive 2011,
 Rd. 4
 Date: Sept. 30, 2011
 Notes by Eric Funk [**except by Olin*]

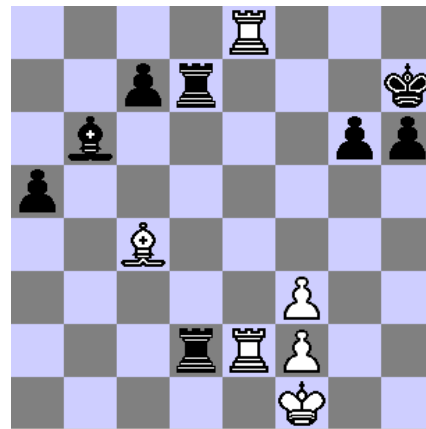
1. d4 d5 2. Nf3 Nc6 3. Bf4 Bg4 I don't mind playing off-beat / theoretically substandard openings, even against higher rated opponents. It keeps things interesting. 4. c3 f6 5. Nbd2 Bxf3 6. gxf3 e5 7. dxe5 fxe5 8. Bg3 Nf6 9. Bh3 Bc5 10. Nb3 Bb6 11. a4 a5 12. Nc1 0-0 13. Be6+ Kh8 14. h4 Qd6 15. Bh3 Rad8 16. 0-0 Nh5 17. Kh2 Qf6 18. Bg4 Nf4 19. Qd2 d4 20. Nd3 dxc3 21. bxc3 Nxd3 22. exd3 Qg6 23. Qg5



There was no way to save the d-pawn. For example, 23. Rad1 h5 24. Bh3 Rxf3 was even worse for white. 23. ... Qxg5 24. hxg5 Rxd3 25. Rae1 What's this?! He's making no effort to hold the c-pawn?! I started to relax at this point, thinking that the win would be fairly easy. To his credit Joe was able to put up a good fight. 25. ... Rxc3 26. Bxe5 Rc4 27. Kg2 Nxe5 28. Rxe5 Rxa4 29. g6

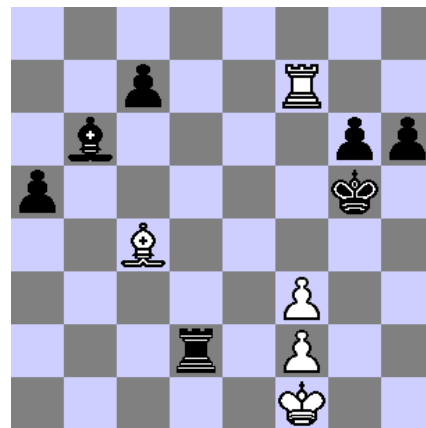


(Obviously not 29. ... hxg6?? 30. Rh1+ Kg8 31. Be6+ Rf7 32. Bb3 when white forces mate) ... **h6 30. Rfe1 Rd4** (30. ... Raf4 was more accurate) **31. Bc8** [** 31...Rxc8?? Re8+ 32. Rxe8 Rxe8 #!*] ... **Rd6 32. Re8** (32. Be6 was more stubborn) **32. ... Rxc6+ 33. Kf1 Rf6 34. Bxb7 Kh7 35. Be4+ g6 36. Re7+ R8f7 37. Bd5 Rg7 38. Re8 Rd6 39. Bc4 Rd2 40. R1e2 Rgd7**



Time control.

Black's plan is simple: trade off all of the rooks. White can't hold the bishop-of-opposite-colors endgame because black has too many passed pawns on both sides of the board. **41. Rxd2 Rxd2 42. Re7+ Kh8 43. Re8+ Kg7 44. Re7+ Kf6 45. Rf7+ Kg5**

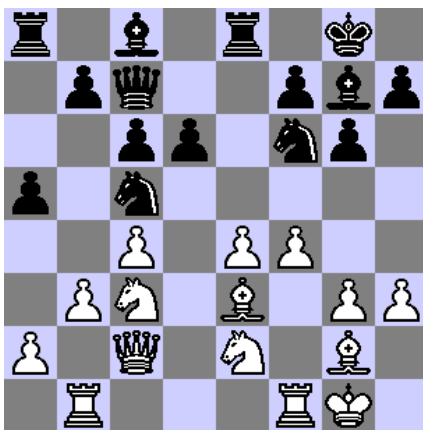


45. ... Ke5

was more accurate. There's no need for the king to keep close to the g- and h-pawns. The text move only helps white set up annoying potential mating threats. **46. f4+ Kg4 47. Be2+ Kh4 48. Rf6 Rd6 49. Rf7 a4 50. f5 g5** [**hxf5?? 51. Rxf5 Sets up another mate threat*] **51. Re7 a3 52. Kg2 g4 53. Re4 Rd4 54. Re6 a2 55. Rxh6+ Kg5 56. Rh1 Ra4 57. Ra1 Bd4!** White resigns. [**What an exciting end game by Eric!*] **0 - 1**

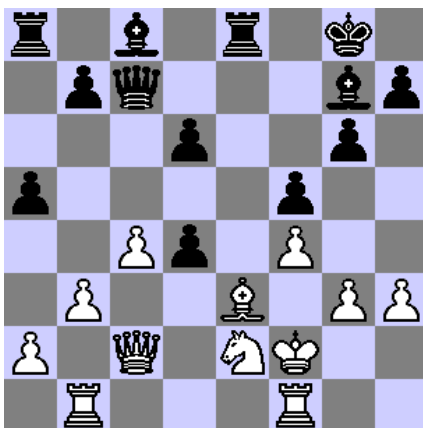
White: Don Funk 1652
 Black: Eric Funk 2015
 Event: NPCC October Quads 2011
 Date: October 21, 2011
 Notes by Eric Funk

1. d4 Nf6 2. Nf3 g6 3. g3 Bg7 4. Bg2 d6
 5. 0-0 0-0 6. c4 Nbd7 7. Nc3 e5 8. e4
 exd4 There are objectively better options,
 but I don't mind going "out of book" to mix
 things up a little. Against another
 opponent I might (or might not) play
 things differently. 9. Nxd4 Ne5 10. b3 c6
 11. Nde2 Re8 12. h3 Qc7 13. f4 Ned7 14.
 Qc2 Nc5 15. Rb1 a5 16. Be3



Losing! This

is the one square to which the bishop
 cannot go! 16. ... Nfxe4 17. Nxe4 Nxe4
 18. Bxe4 f5 Because of the misplaced
 bishop on e3, black regains his piece and
 winds up a pawn ahead. 19. Bd5+ cxd5
 20. Kf2 d4 Very strong. The pawn cannot
 be captured nor can it be ignored.



21. Nxd4

Rxe3 22. Kxe3 Qe7+ The point. The
 knight cannot be held (23. Kd3 Qe4+ 24.
 Kc3?? Qxd4#) and black will have two
 bishops for a rook. Deferring the d-pawn's
 capture also would have failed. For
 example, 21. Bc1 Qc5 22. Qd3 Bd7 23. Bb2

Bc6 24. Bxd4 Bxd4+ 25. Qxd4 Rxe2+ (or 25.
 Nxd4 Be4) wins. 23. Kd2 Bxd4 24. Rbe1
 Qf7 25. Qd3 Bc5 26. Re2 Bd7 27. Qd5
 Blundering away more material, but it's all
 over anyway. The bishop pair is too strong.
 27. ... Qxd5+ 28. cxd5 Bb5+ White
 resigned in a few moves. 0 - 1

Tournament Schedule

DATE	RD.	EVENT	COMMENTS
11/4/11	1 of 3 *	November Octagonal (3 round Swiss, 8- man sections) 40/80; SD30 EF:\$10/\$15	Phone Tournament Director prior to taking a bye. No call means you will be paired; no show means you will be dropped from the tournament.
11/11/11	2 of 3 *		
11/18/11	3 of 3 *		
11/25/11	.	CLOSED	Closed for Thanksgiving Weekend.
12/2/11	1 & 2 of 4 *	December G45 Swiss/ Quad (4 rd's. in 4- man sections) EF:\$10/\$15	Must play two games each Friday night. One as white, one as black (no "byes") Both games are G/45.
12/9/11	3 & 4 of 4 *		
12/16/11	4 or 5 *	Endgame Tournament (4 or 5 rd's. Swiss) G/10 EF: \$2/\$7	Instructional. Not USCF-rated. Starting positions are from actual GM endgames. Will analyze all positions in post mortem.
12/23/11	.	CLOSED	Closed for Christmas Weekend.
12/30/11	.	CLOSED	Closed for New Year's Weekend.
1/6/12	1 of 7 *	33rd Annual Winter Robin (8-man sections) 40/100; SD45 EF: \$25 / \$35	Considered by many NPCC members to be the <u>best</u> tournament of the year! ^ (2/24 & 3/2 are open nights for make-up games)
1/13/12	2 of 7 *		
1/20/12	3 of 7 *		
1/27/12	4 of 7 *		
2/3/12	5 of 7 *		
2/10/12	6 of 7 *		
2/17/12	7 of 7 *		
2/24/12	Open ^		
3/2/12	Open ^		
3/9/12	TBD		

More to be printed. Keep checking in. Thanks.

* **NOTE:** All rd's. begin at 8 PM. Arrive 7:45 1st round!