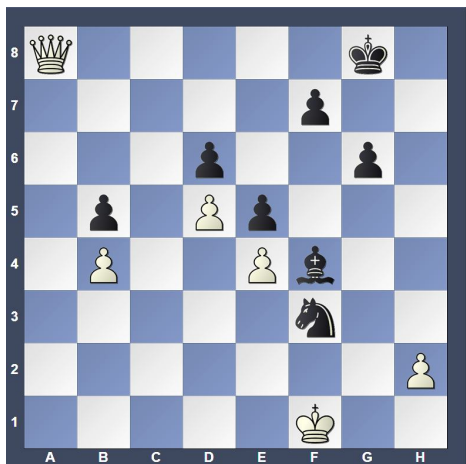


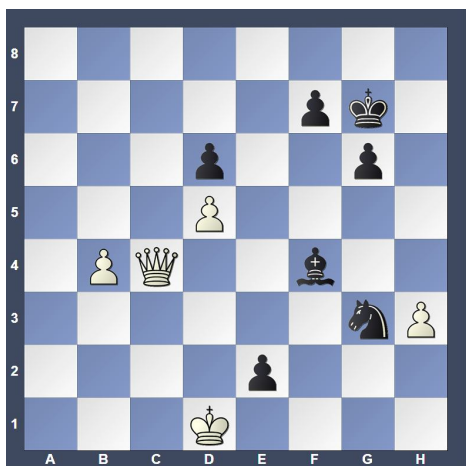
Pages 1 to 5 in "Summer Part 3A" and pages 6 to 8 in "Summer Part 3B"

(Cont. from p.5) 40.a6 Nd3+ 41.Kg3 Bh6 42.a7 Bf4+ 43.Kg2 Ne1+ 44.Kf1 Nxf3 45.a8=Q+ [D]



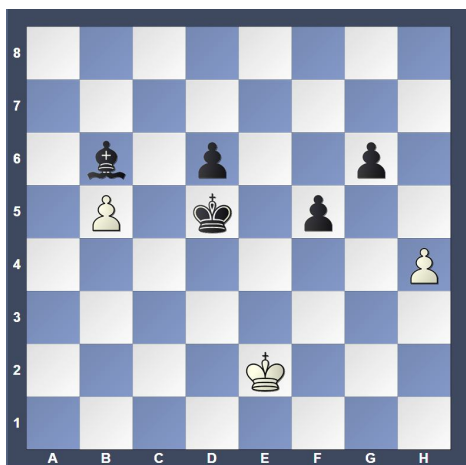
45...Kg7

46.h3 Nd2+ 47.Ke2 Nxe4 48.Qc6 Ng3+ 49.Kd1 e4 50.Qxb5 e3 [50...Nf5 there is nothing better in the position 51.Qa5 Ne3+ 52.Ke2 Nf5] 51.Qc4 e2+ [D]



52.Qxe2??

(Olin -- White erroneously thought she had to capture the pawn on e2. She had a won game in hand.) [52.Ke1 secures victory 52...Be5 53.b5] 52...Nxe2 53.Kxe2 Bc1 [53...Bg5 it becomes clear that Black will call all the shots 54.Kd3] 54.b5 Ba3 55.Kd3 [55.b6 is one last hope 55...Bc5 56.b7 Ba7 57.Kf3] 55...Bc5 56.Ke4 f5+ 57.Kf4 Kf6 58.h4 Bb6 59.Kf3 Ke5 60.Ke2 Kxd5 [D]



(Extremely unfortunate for Jackie that she missed the chance to score an upset victory -- Olin) 0-1

Round: 2 Submitted by Olin with selected Fritz comments [shown thusly].

White: John Russo (1384)

Black: Jackie Brown (906)

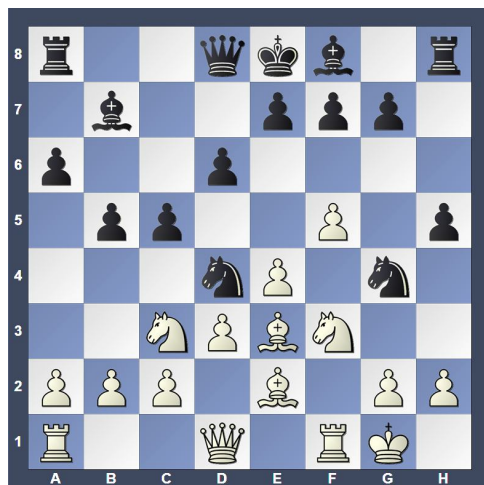
Date: 5/24/2013

[B23: Closed Sicilian: Lines without g3] 1.e4 c5 2.f4 d6 3.Nf3 Nf6 4.Nc3 a6 5.Bc4 b5 [D]



6.Be2 Bb7

7.d3 Nc6 8.0-0 h5 9.f5 Nd4 10.Be3 Ng4 [D]



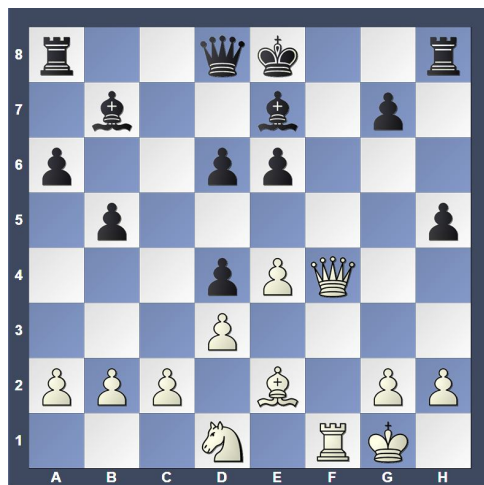
11.Qd2??

[11.Bd2 was necessary] 11...Nxe3 12.Nxd4??

[Simply worsens the situation. 12.Qxe3 Nxc2 13.Qd2

Nxa1 14.Rxa1] 12...Nxf1 13.Rxf1 cxd4 14.Nd1 e6

15.fxe6 fxe6 16.Qf4 Be7 [D]

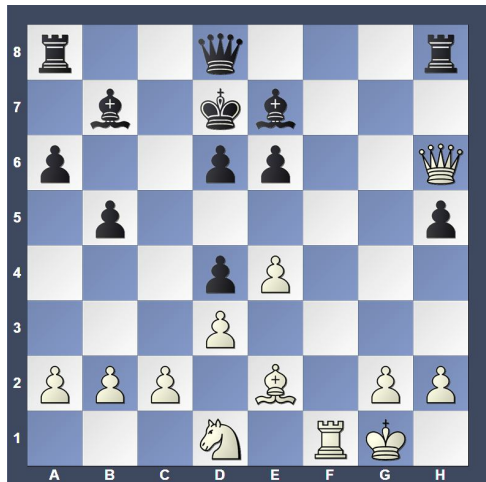


(Cont. p.7)

17.Qf7+ Kd7 18.Qxg7 Rg8 [18...Rc8 keeps an even firmer grip. 19.Qxd4 Rxc2 20.Bf3] 19.Qh6 Rh8 [D]

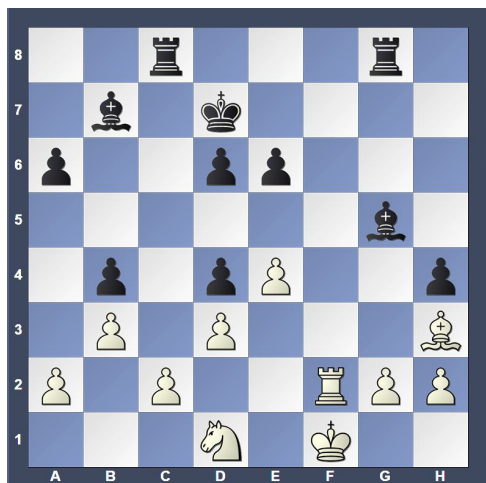
1 page

(Cont. from prev.col.) 38.Kd2 Rf1 39.Bg4 Ra1 40.Bf3 Rxa2 41.Kc1 Ra1+ 42.Kb2 Rf1 43.Bg4 Be1 44.Bc8 Bc3+ 45.Ka2 Ra1# [D]



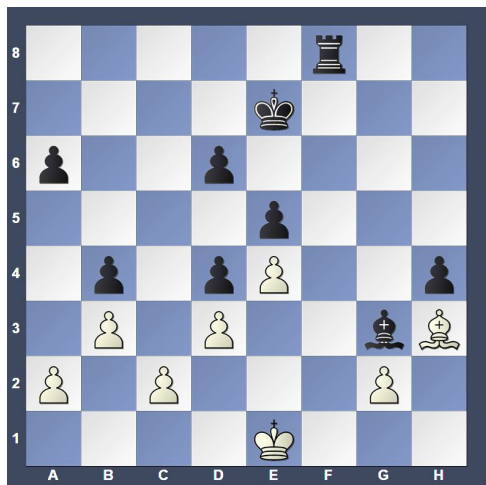
20.Qg6?? [A

weak move, ruining a winning position. 20.Qg7 Rc8 21.Qxd4 Rxc2 22.Bf3] 20...h4 [20...Qc7 and Black can already relax 21.Rf7 Raf8 22.Rxe7+ Kxe7 23.Qg7+ Kd8 24.Qxd4] 21.Bg4 Qg8 22.Qxg8 Rhxg8 23.Bh3 b4 24.b3 Rac8 25.Rf2 Bg5 26.Kf1 [D]

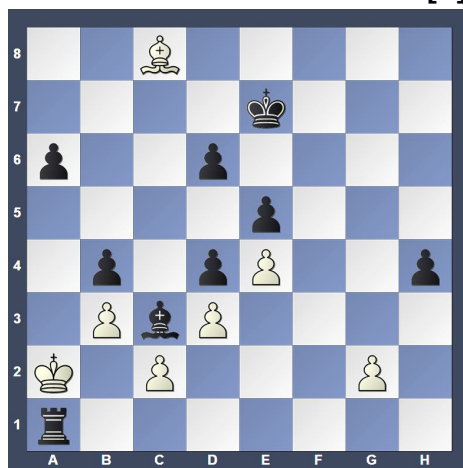


[26.Rf7+ the

only chance to get some counterplay 26...Ke8 27.Rxb7 Rxc2 28.Rb8+ Bd8 29.Kf1 Rf8+ 30.Ke1] 26...Rgf8 27.Rxf8 Rxf8+ 28.Ke2 Bc1 29.Nf2 Rc8 30.Kd1 Bf4 31.Ng4 Rf8 32.Ke2 Ke7 33.Kd1 e5 34.Ke2 Bc8 35.Ke1 Bxg4 36.Bxg4 Bxh2 37.Bh3 Bg3+ [D]



(Continued next col.)



0-1

Round: 4

Submitted by Olin with my comments and selected Fritz comments [shown thusly].

White: Olin Mastin (1549)

Black: Burhan Kayali (1699)

Date: 6/7/2013

[A07: Réti Opening: New York and Capablanca Systems]

1.Nf3 g6 2.g3 Bg7 3.Bg2 Nf6 4.d3 c6 5.0-0 0-0

6.Nbd2 d5 7.Re1Nbd7 8.e4 e6 9.e5 [D]



9...Ng4

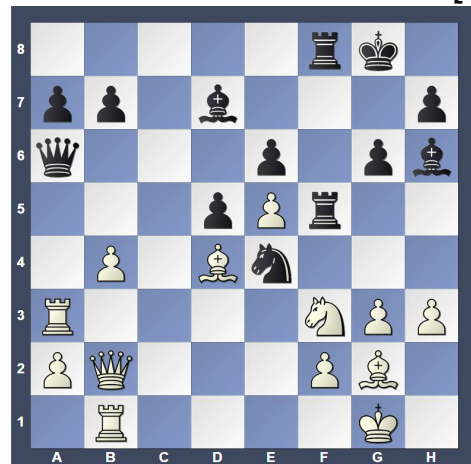
10.d4 Qb6 11.c3 c5 12.h3 Nh6 13.Nf1 [13.g4

Re8] 13...Nf5 14.Rb1 cxd4 15.cxd4 f6 16.b3

fxe5 17.dxe5 Nc5 18.Ne3 Ne4 19.Qc2 Bd7

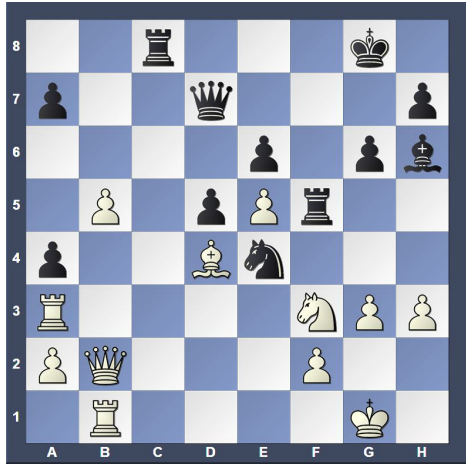
20.Nxf5 Rxf5 21.Be3 Qa5 22.Bd4 Rc8 23.Qb2

Rcf8 24.b4 Qa6 25.Re3 Bh6 26.Ra3 [D]



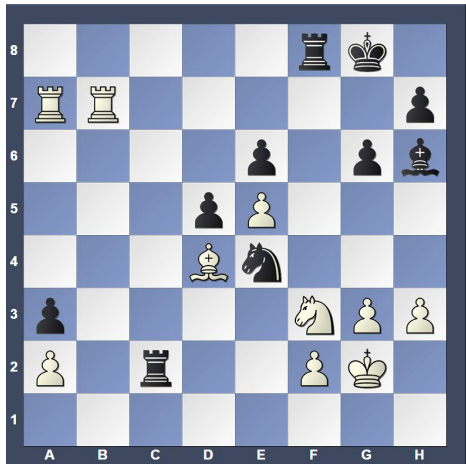
(Cont. p.8)

(Cont. from p.7) 26...Ba4 27.Bf1 b5 28.Be2 Rc8 29.Bd1 [29.Nh2!? is interesting 29...Bg7 30.Bd3] (Olin: Indeed!) 29...Qc6 30.Bxa4 bxa4 31.b5 Qd7 [D]



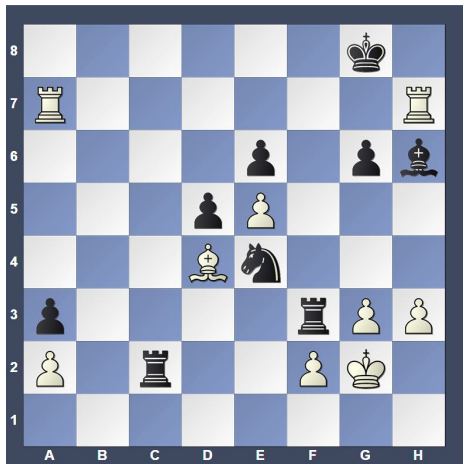
32.b6?

[32.Nh4!? is the best option White has 32...Rf7 33.Rxa4] (Olin: Indeed!) 32...axb6 33.Qxb6 Rff8 34.Kg2 Rc4 35.Qb7 Qxb7 36.Rxb7 Bc1 37.Rd3 Rc6 38.Ra7 a3 39.Rb3 Rc2?? [39...Rf7 40.Rb8+ Kg7] 40.Rbb7 Bh6 [D]



[40...Rxa2??

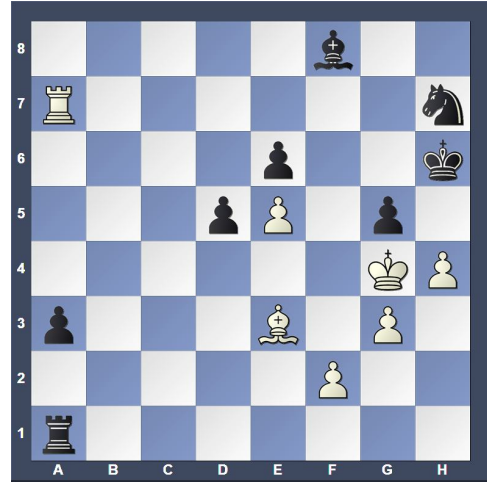
fails to mate in 3 41.Rg7+ Kh8 42.Rxh7+ Kg8 43.Rag7#] 41.Rxh7 (Olin: I considered Be3, but good thing I did not play it!) [41.Be3 Rf7 42.Rxf7 Bxe3 43.Rg7+ Kf8 44.Raf7+ (44.Rgf7+ Ke8 45.Rfe7+ Kd8 46.Rxh7 Rxf2+ 47.Kh1 Nxg3+ 48.Kg1 Rxa2#) 44...Ke8 45.Re7+ Kd8 46.Rd7+ Kc8] 41...Rxf3 [D]



(Cont. next

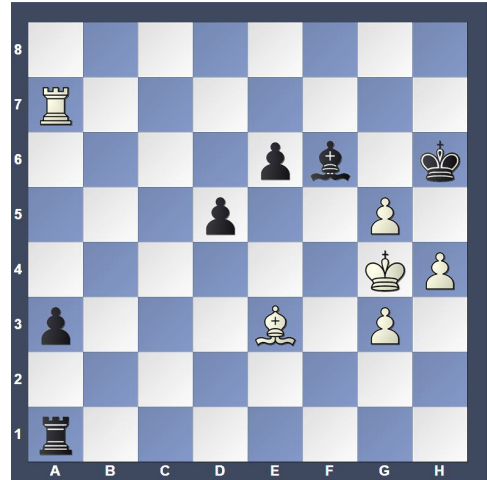
col.)

(From prev. col.) 42.Kxf3?? [42.Rxh6 Rxg3+ 43.Kh2+- Rxf2+ 44.Bxf2] 42...Ng5+ 43.Kg2 Nxh7 44.Ra8+?? [44.Rxa3 Rc4 45.Ra8+ Nf8 46.Bb6] 44...Bf8-+ 45.h4 Rxa2 46.Bc5 Ra1 47.Kf3 Kg7 48.Ra7+ Kh6 49.Be3+ g5 50.Kg4 [D]



50...Bg7

[50...Re1 and Black wins 51.hxg5+ Kg6] 51.f4 Nf6+?? [51...Nf8 this is the best bet to save the position 52.h5 Re1 53.fxg5+ Kh7] 52.exf6 Bxf6 [52...gxf4 is no salvation 53.Bxf4+ Kg6 54.Be5 Rf1 55.fxg7 Kh7 56.Ra8 Rf6 57.g8Q+ Kh6 58.h5 a2 59.Qh8#] 53.fxg5+ [D]



Black

resigned. [53.fxg5+ Bxg5 54.Bxg5+ Kg6 55.h5#] 1-0

Allentown Center City Chess Club Offer

(from Eric C. Johnson): "For any of our events -- if three or more Lansdale players carpool together -- the driver plays for free!"

Other places to play chess: The below are for friendly off hand non-rated games (clocks optional). Bring chess set.

Tuesday mornings 9:30 AM to Noon at the Pennridge Community Senior Center in Silverdale. Located on route 113 near route 152.

Wednesday evenings 7:30 to 10:00 PM, "Christ Reformed Church at Indian Creek" located at 171 Church Road (intersection with Cowpath Road), Telford, PA.

www.northpennchessclub.org